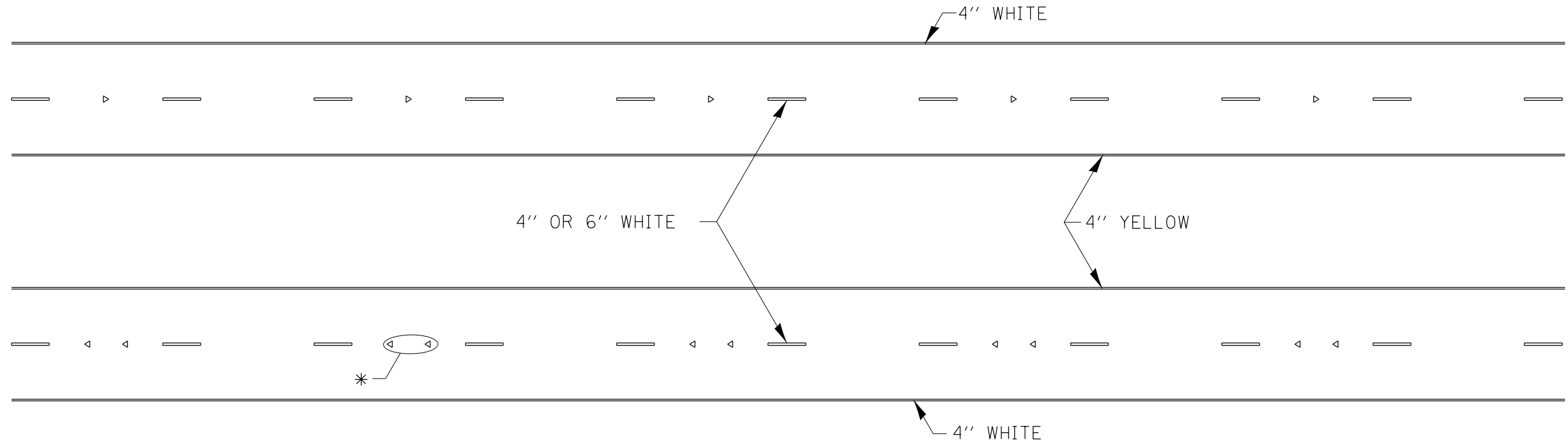
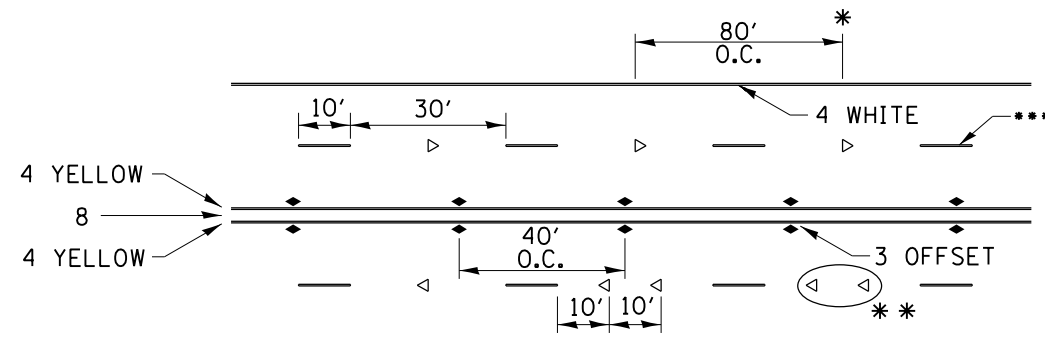


# TYPICAL PAVEMENT MARKINGS



\* SEE HIGHWAY STANDARD 781001 FOR SPACING DETAILS.  
USE DOUBLE MARKERS WHEN ADT  $\geq$  20,000.

## MULTI-LANE / DIVIDED



SYMBOLS

\* REDUCE TO 40' O.C. ON CURVES WHERE ADVISORY SPEEDS ARE 10 MPH LOWER THAN POSTED SPEEDS.

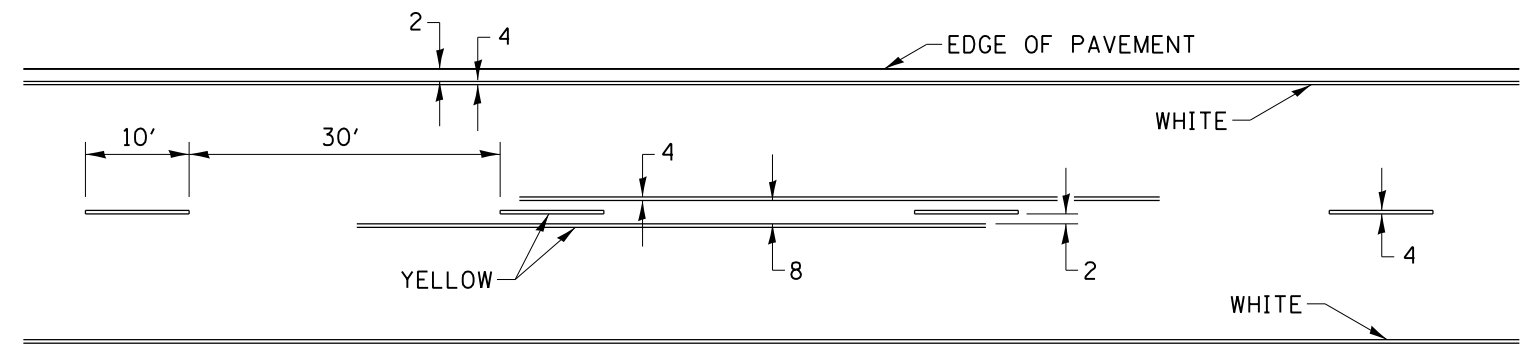
\*\* USE DOUBLE MARKERS WHEN ADT  $\geq$  20,000

\*\*\* CENTERLINE SKIP DASH PAVEMENT MARKING SPEED LIMIT LESS THAN 40 MPH USE 4" LINE. SPEED LIMIT 40 MPH AND OVER USE 6" LINE.

## MULTI-LANE / UNDIVIDED & ONE WAY

(FOR MULTI-LANE UNDIVIDED HIGHWAYS USE THIS  
DETAIL NOT HIGHWAY STANDARD 781001)

## TYPICAL PAVEMENT MARKING FOR TWO LANE SECTION – NO PASSING ZONES



FILE NAME =	USER NAME = Fasslermj	DESIGNED -	REVISED - 8-27-13
ca:\pw_work\p\dot\fasslermj\d0149594\0208209-shit-details.dgn		DRAWN -	REVISED - 11-28-12
		CHECKED -	REVISED -
		DATE -	REVISED -

STATE OF ILLINOIS  
DEPARTMENT OF TRANSPORTATION

REGION 2 / DISTRICT 2 STANDARD

SCALE: \_\_\_\_\_ SHEET NO. \_\_\_ OF \_\_\_ SHEETS STA. \_\_\_\_\_ TO STA. \_\_\_\_\_

• IL 78		TOTAL SHEETS	SHEET NO.
F.A.P. RTE.	SECTION	COUNTY	
*22	15BR-1	WHITESIDE	146 117
FED. ROAD DIST. NO. -		ILLINOIS FED. AID PROJECT	CONTRACT NO. 64E19