

STA 228+00.00

MATCH LINE STA 234+00.00

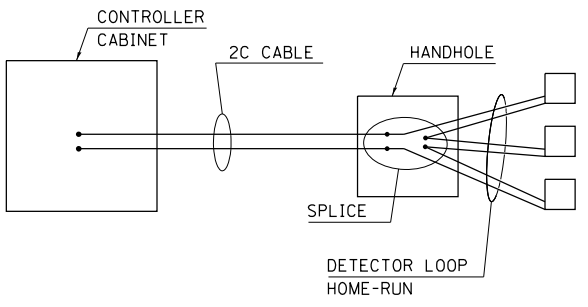
LOOP DATA IL 9 & CARNAHAN DR.				
Loop	Length	Width	Number of Turns	Delay (sec.)
B1-3	15'	6'	3	
B4	6'	6'	3	
B5	6'	17'/11"	3	10
B6	6'	12'/7"	3	10
C1	6'	6'	4	
D1	20'	6'	3	
D2-3	20'	6'	3	
D4-5	6'	6'	3	
D6-7	6'	6'	3	

THE FOLLOWING LOOPS SHALL BE WIRED TO COMMON SINGLE PAIR LEAD-IN CABLE: (B1, B2, B3), (B4), (B5), (B6), (C1), (D1), (D2, D3), (D4), (D5), (D6, D7)

INTERSECTION QUANTITY
DETECTOR LOOP, TYPE 1= 859 FT

DETAIL OF DETECTOR LOOP WIRING

WIRED IN SERIES WITH SINGLE PAIR CABLE

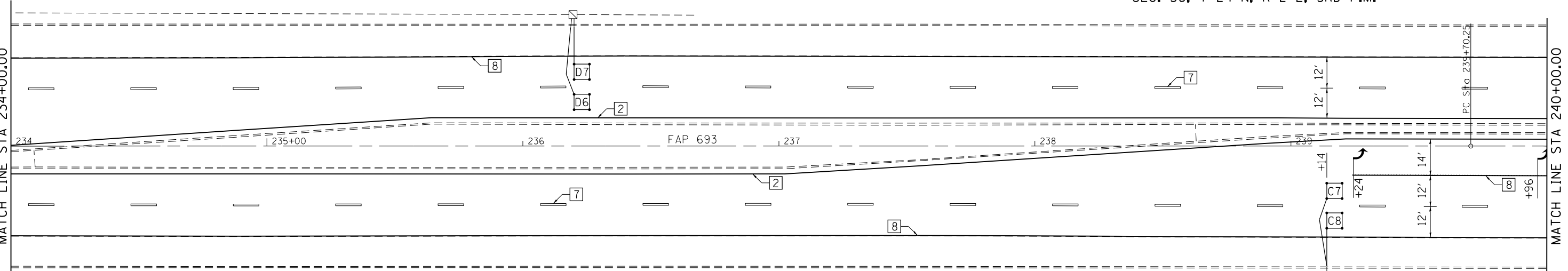


STA. 230+89.91 (FAP 693) =
STA. 100+00.00 (CARNAHAN DR.)

SEC. 1, T 23 N, R 2 E, 3RD P.M.

MATCH LINE STA 234+00.00

MATCH LINE STA 240+00.00



TYPICAL PAVEMENT MARKING LEGEND

- | | | |
|-----------------------------------|------------------------------|--|
| 1 4" (100) SKIP-DASH (YELLOW) | 6 RESERVED | 11 24" (600) STOP BAR (WHITE) |
| 2 4" (100) SOLID (YELLOW) | 7 4" (100) SKIP-DASH (WHITE) | 12 8" (200) SOLID (WHITE) |
| 3 12" (300) DIAGONAL (YELLOW) | 8 4" (100) SOLID (WHITE) | 13 4" (100) LANE LINE EXTENSIONS (WHITE) |
| 4 4" (100) DOUBLE YELLOW (NARROW) | 9 12" (300) DIAGONAL (WHITE) | 14 4" (100) PARKING WHITE |
| 5 RESERVED | 10 6" (150) SOLID (WHITE) | |

SEC. 1, T 23 N, R 2 E, 3RD P.M.

