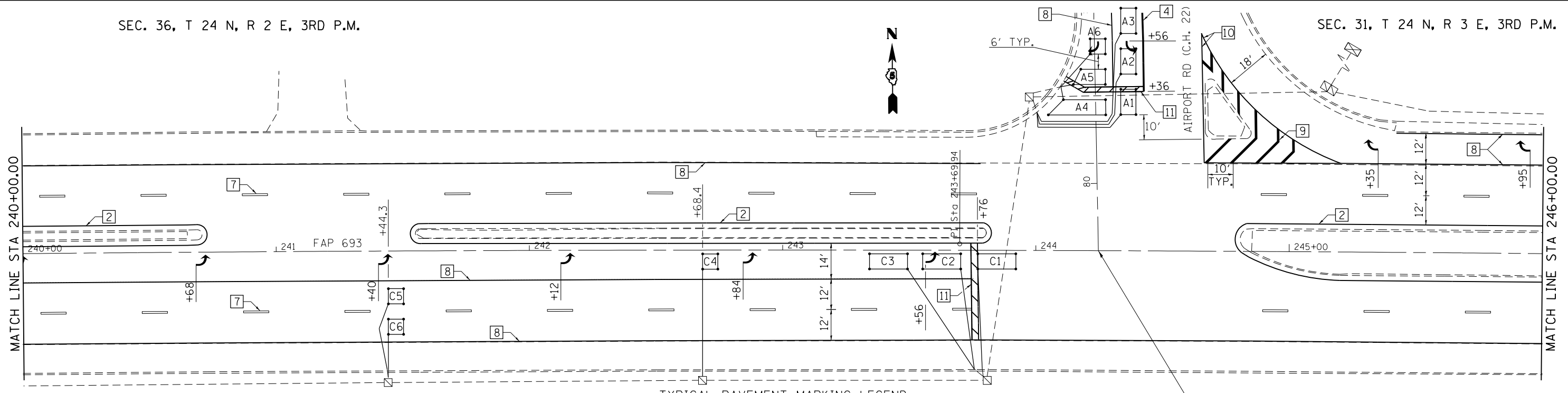


SEC. 36, T 24 N, R 2 E, 3RD P.M.

SEC. 31, T 24 N, R 3 E, 3RD P.M.



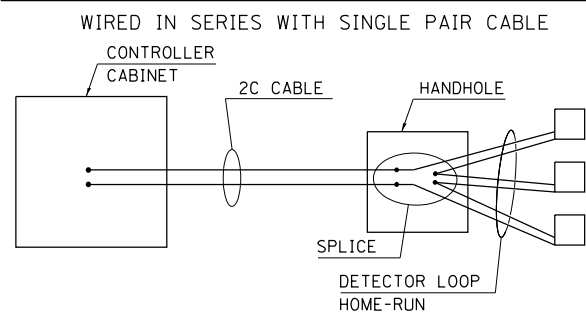
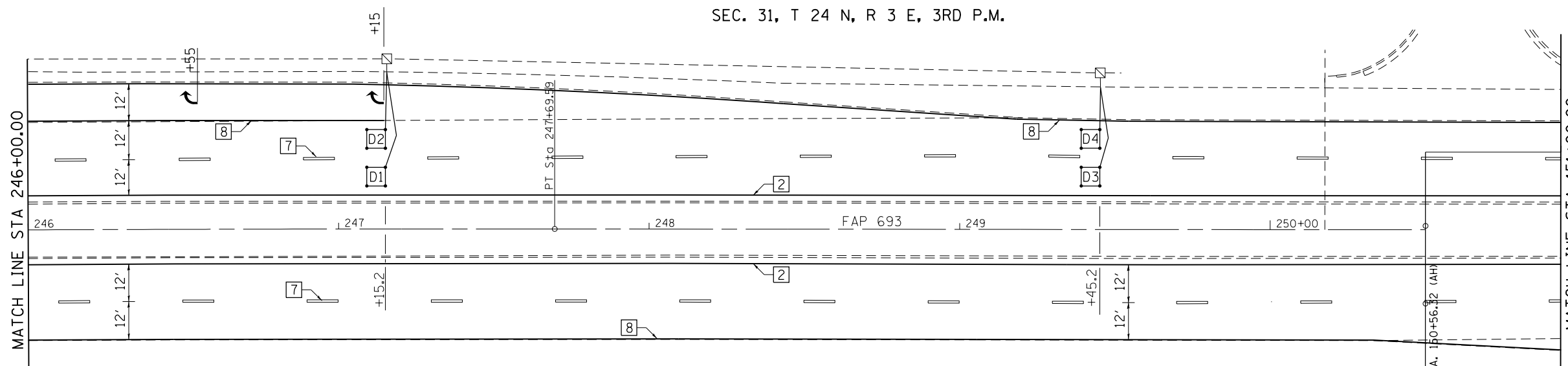
SEC. 1, T 23 N, R 2 E, 3RD P.M.

- |                                   |                              |  |
|-----------------------------------|------------------------------|--|
| 1 4" (100) SKIP-DASH (YELLOW)     | 6 RESERVED                   | 11 24" (600) STOP BAR (WHITE)            |
| 2 4" (100) SOLID (YELLOW)         | 7 4" (100) SKIP-DASH (WHITE) | 12 8" (200) SOLID (WHITE)                |
| 3 12" (300) DIAGONAL (YELLOW)     | 8 4" (100) SOLID (WHITE)     | 13 4" (100) LANE LINE EXTENSIONS (WHITE) |
| 4 4" (100) DOUBLE YELLOW (NARROW) | 9 12" (300) DIAGONAL (WHITE) | 14 4" (100) PARKING WHITE                |
| 5 RESERVED                        | 10 6" (150) SOLID (WHITE)    |  |

STA. 244+24.68 (FAP 693) =  
STA. 79+79.44 (AIRPORT RD.)

SEC. 6, T 23 N, R 3 E, 3RD P.M.

SEC. 31, T 24 N, R 3 E, 3RD P.M.



LOOP DATA				
IL 9 & AIRPORT RD				
Loop	Length	Width	Number of Turns	Delay (sec.)
A1-2	10'	6'	3	
A3	10'	6'	3	
A4	6'	22'16"	3	10
A5	6'	12'9"	3	10
A6	6'	6'	3	10
C1	15'	6'	3	
C2-3	15'	6'	3	
C4	6'	6'	4	
C5	6'	6'	5	
C6	6'	6'	5	
C7-8	6'	6'	5	
D1	6'	6'	3	
D2	6'	6'	3	
D3-4	6'	6'	3	

THE FOLLOWING LOOPS SHALL BE WIRED TO COMMON SINGLE PAIR LEAD-IN CABLE: (A1, A2), (A3), (A4), (A5), (A6) (C1), (C2, C3), (C4), (C5), (C6), (C7, C8), (D1), (D2), (D3, D4)

INTERSECTION QUANTITY  
DETECTOR LOOP, TYPE 1= 963 FT.

FILE NAME =	USER NAME = ppersonbr	DESIGNED -	REVISED -
ca:\pwwork\pwwork\personbr\d0181149\0578787-Sht-pmk9.dgn		DRAWN -	REVISED -
		CHECKED -	REVISED -
		DATE -	REVISED -

STATE OF ILLINOIS  
DEPARTMENT OF TRANSPORTATION

PAVEMENT MARKING PLAN

SCALE: SHEET 2 OF 8 SHEETS STA. 240+00 TO STA. 151+00

F.A.P. RTE.	SECTION	COUNTY	TOTAL SHEETS	SHEET NO.
693	(FR)RS-1	MCLEAN	48	32
CONTRACT NO. 70787			ILLINOIS FED. AID PROJECT	