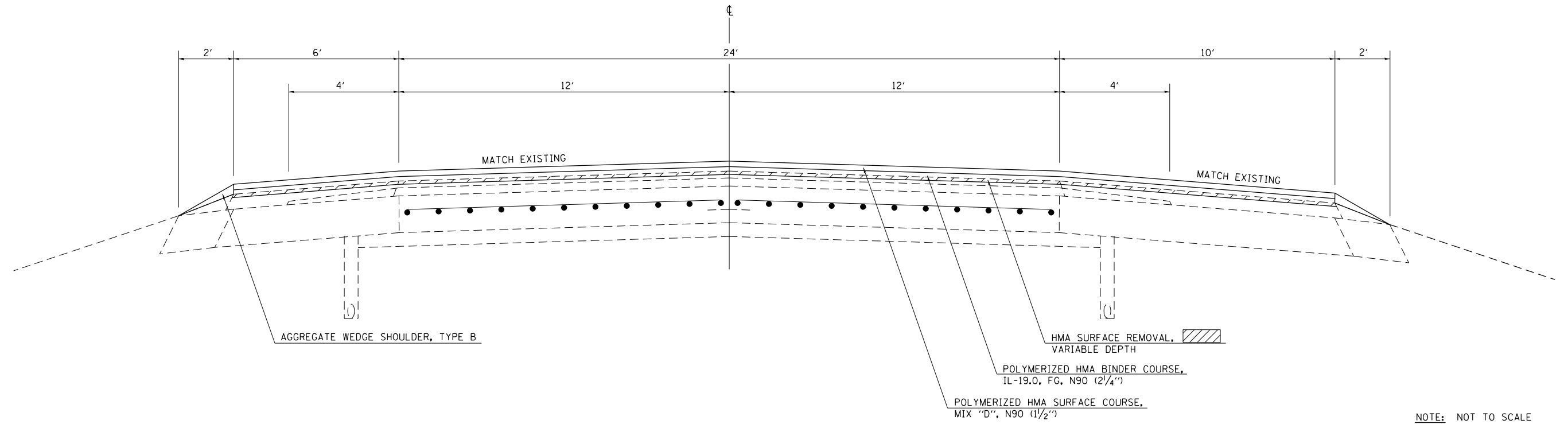


PROPOSED TYPICAL CROSS SECTION

STA. 126+68.00 TO STA. 701+00.00



FILE NAME =	USER NAME = steffenmk	DESIGNED -	REVISED -
c:\pw\work\p\dot\stef\mk\d0186637\074470-sh-typicals.dgn		DRAWN -	REVISED -
Default	PLOT SCALE = 100.0000' / 1in.	CHECKED -	REVISED -
	PLOT DATE = 6/13/2014	DATE -	REVISED -

**STATE OF ILLINOIS
DEPARTMENT OF TRANSPORTATION**

PROPOSED TYPICAL CROSS SECTIONS

SCALE: N/A SHEET 3 OF 4 SHEETS STA. TO STA.

F.A.I. RTE.	SECTION	COUNTY	TOTAL SHEETS	SHEET NO.
72	(58-64, 65)RS-1	Macon	47	9
ILLINOIS FED. AID PROJECT			CONTRACT NO. 74470	