

| F.A.I. RTE. | SECTION | COUNTY | TOTAL SHEETS | SHEET NO. |
|-------------|--------------|------------|--------------------|-----------|
| 64 | 95-(1,2)RS-1 | WASHINGTON | 126 | 1 |
| | | ILLINOIS | CONTRACT NO. 76D20 | |

STATE OF ILLINOIS
DEPARTMENT OF TRANSPORTATION
DIVISION OF HIGHWAYS

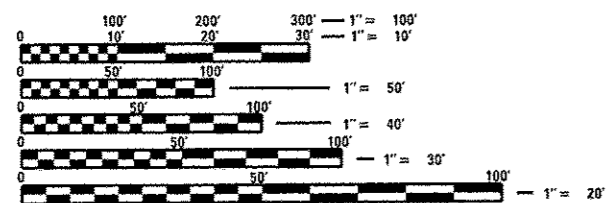
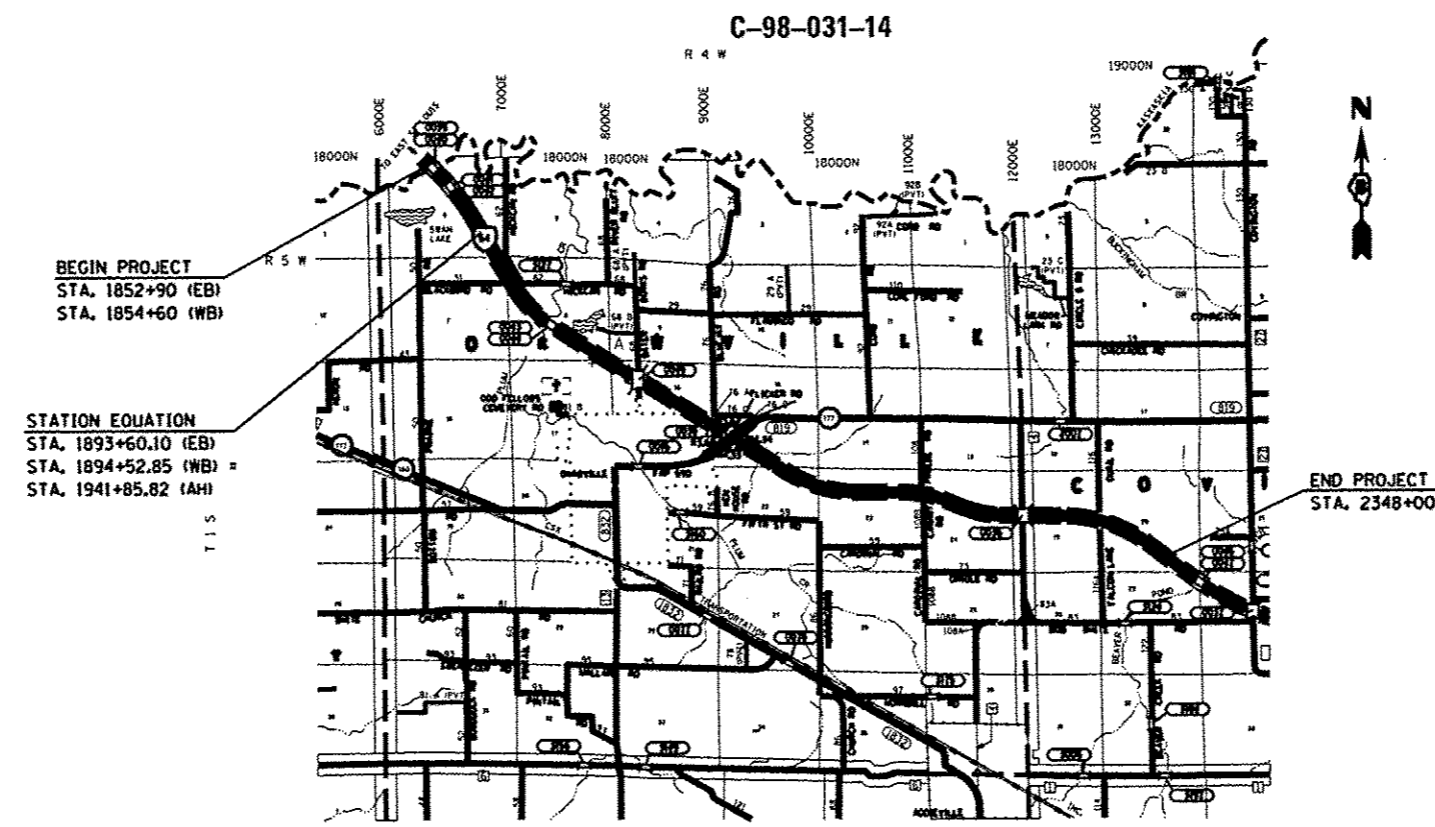
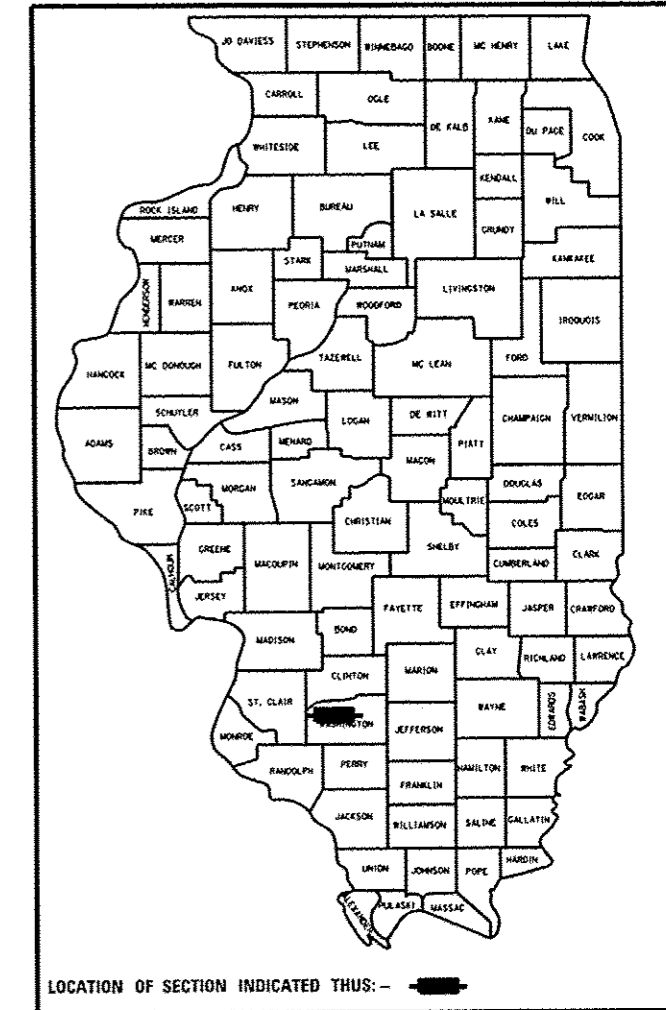
PROPOSED HIGHWAY PLANS

FAI ROUTE 64 (I-64)
SECTION 95-(1,2)RS-1

I-64 FROM CLINTON COUNTY LINE TO
BEAVER POND CREEK
INTERSTATE RESURFACING & BRIDGE REPAIRS
WASHINGTON COUNTY

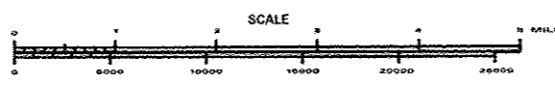
FOR INDEX OF SHEETS, SEE SHEET NO. 2

D-98-071-09



FULL SIZE PLANS HAVE BEEN PREPARED USING STANDARD ENGINEERING SCALES. REDUCED SIZED PLANS WILL NOT CONFORM TO STANDARD SCALES. IN MAKING MEASUREMENTS ON REDUCED PLANS, THE ABOVE SCALES MAY BE USED.

J.U.L.I.E.
JOINT UTILITY LOCATION INFORMATION FOR EXCAVATION
1-800-892-0123
OR 811



SCALE
GROSS LENGTH = 44684.28 FT. = 8.463 MILES
NET LENGTH = 44684.28 FT. = 8.463 MILES

PROJECT ENGINEER: PHILIP COPPERNOLL 618-346-3480
PROJECT MANAGER: TIM PADGETT 618-346-3325

CONTRACT NO. 76D20

STATE OF ILLINOIS
DEPARTMENT OF TRANSPORTATION
DIVISION OF HIGHWAYS

SUBMITTED *June 13, 2014*
Jefferson Z. Keenan
DEPUTY DIRECTOR OF HIGHWAYS, REGION 5 ENGINEER

July 18, 2014
John D. Baranzelli, P.E.
acting ENGINEER OF DESIGN AND ENVIRONMENT

July 18, 2014
Omer Osman, P.E.
DIRECTOR OF HIGHWAYS, CHIEF ENGINEER

PRINTED BY THE AUTHORITY
OF THE STATE OF ILLINOIS