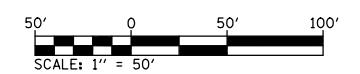
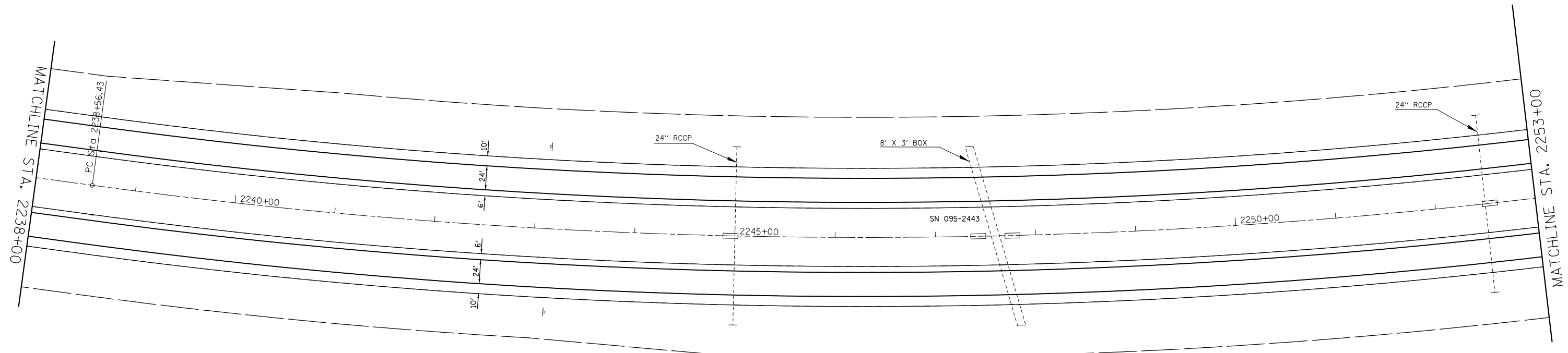




EXIST. CURVE I64-4  
 PI STA. = 2249+68.95  
 $\Delta$  = 21° 58' 37" (LT)  
 D = 1° 00' 00"  
 R = 5,729.57'  
 T = 1,112.52'  
 L = 2,197.69'  
 E = 107.01'  
 e = -----  
 T.R. = -----  
 S.E. RUN = -----  
 P.C. STA. = 2238+56.43  
 P.T. STA. = 2260+54.12



FILE NAME =	USER NAME = conoverpj	DESIGNED -	REVISED -
et:\pw\work\p\dot\conoverpj\d0145718\d876d20-shit-plan.dgn		DRAWN -	REVISED -
	PLOT SCALE = 100.0000' / in.	CHECKED -	REVISED -
	PLOT DATE = 6/13/2014	DATE -	REVISED -

**STATE OF ILLINOIS  
 DEPARTMENT OF TRANSPORTATION**

**PLAN SHEETS**

SCALE: 1" = 50'    SHEET NO. 24 OF 33 SHEETS    STA. 2238+00 TO STA. 2253+00

F.A.I. RTE.	SECTION	COUNTY	TOTAL SHEETS	SHEET NO.
64	95-(1,2)RS-1	WASHINGTON	126	49
CONTRACT NO. 76D20				
FED. ROAD DIST. NO.    ILLINOIS FED. AID PROJECT				