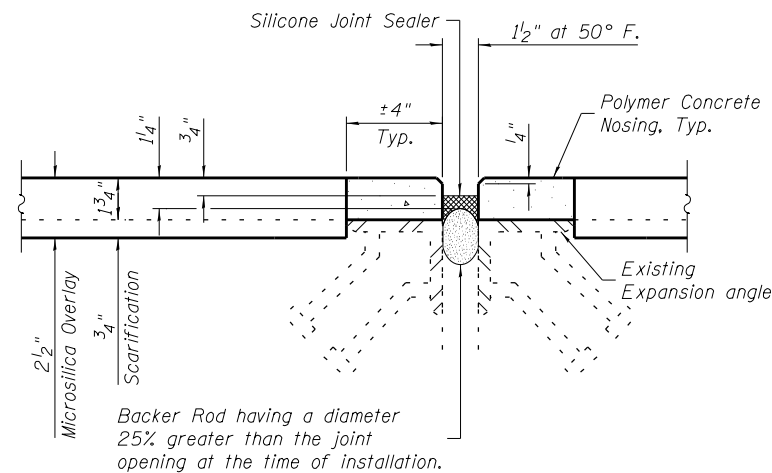
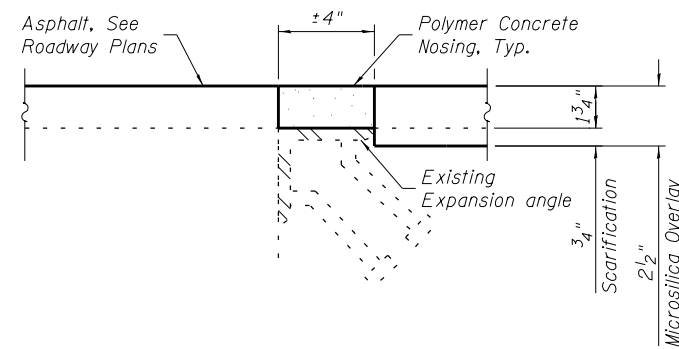


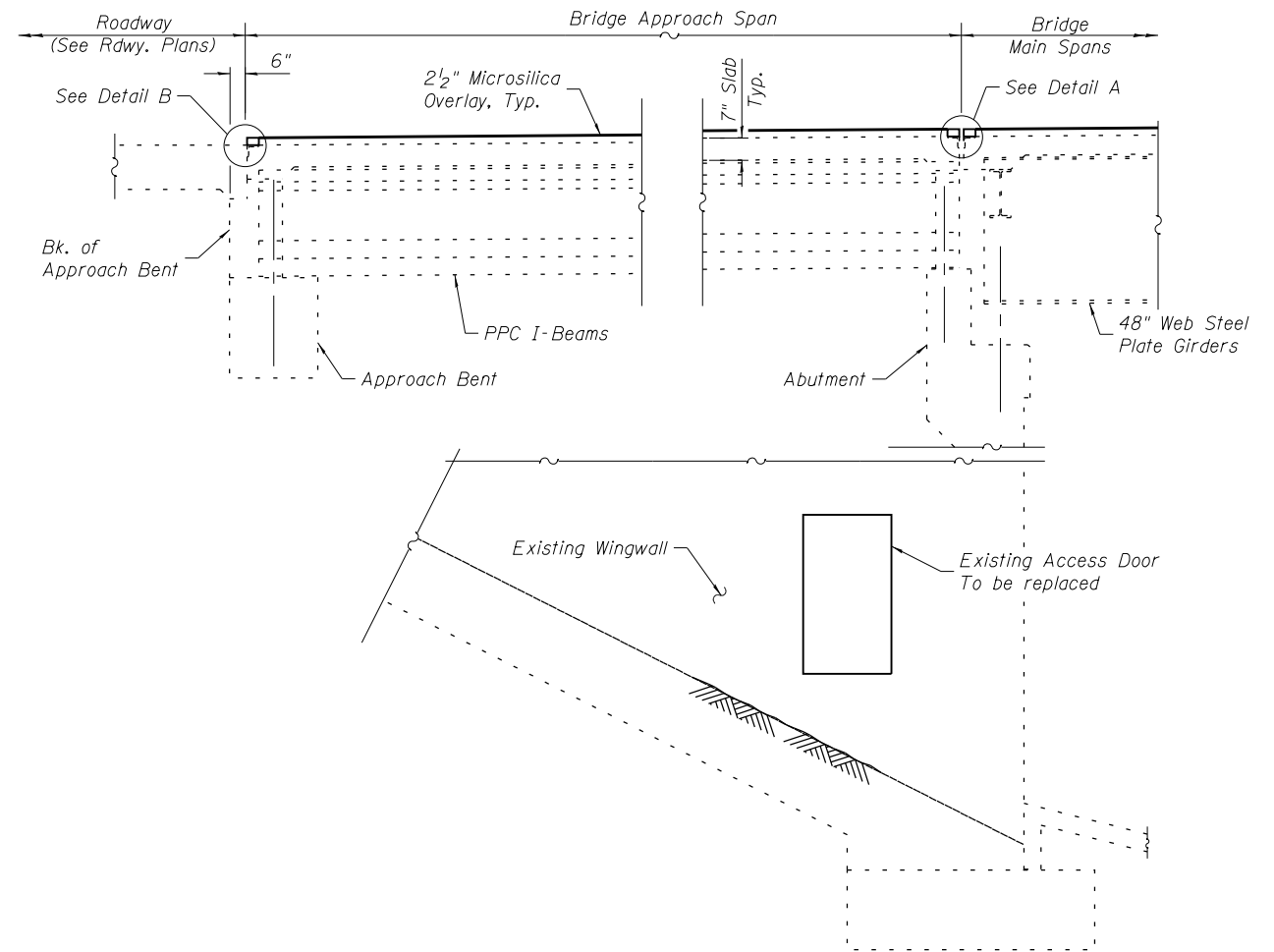
PRINT DATE: 6/11/2014 2:29:39 PM Y:\2014\I-64 Bridge Repair\DCN\Bridge\Final\Plotsheets\095-0036\0950036-00000-003-Details.dgn



**DETAIL A**

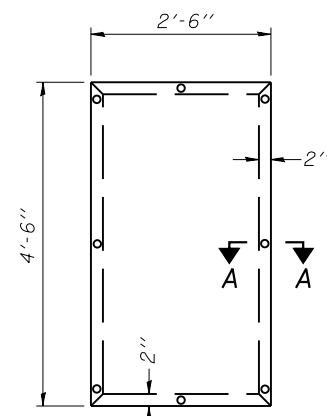


**DETAIL B**

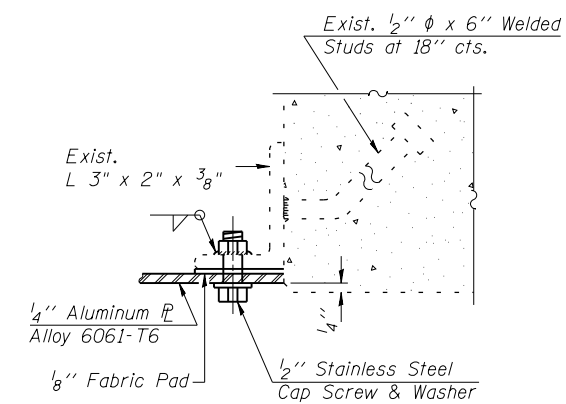


**PART SECTION AND END VIEW OF ABUTMENTS**

Note:  
Bridge Deck Scarification 3/4" is not shown.



**DOOR ELEVATION**



**SECTION A-A**

Note:  
Aluminum plate, fabric pads, cap screws, nuts and washers included in the cost for Access Doors.

**BILL OF MATERIAL**

Item	Unit	Total
Access Door	Each	2
Silicone Joint Sealer, 1.5"	Foot	60
Polymer Concrete	Cu. Ft.	8

**EFK Moen, LLC**  
Civil Engineering Design  
303 Fountains Parkway, Suite 240  
Fairview Heights, IL 62208  
Phone 618-206-4250

USER NAME = cdl	DESIGNED - CDL	REVISED -
PLOT SCALE = 0.2" = 1' / in.	CHECKED - CTW	REVISED -
PLOT DATE = 6/11/2014	DRAWN - JA	REVISED -
	DATE - 6/11/2014	REVISED -

**STATE OF ILLINOIS**  
**DEPARTMENT OF TRANSPORTATION**

**DETAILS**  
**STRUCTURE NO. 095-0036**

SHEET NO. 3 OF 5 SHEETS

F.A.I. RTE.	SECTION	COUNTY	TOTAL SHEETS	SHEET NO.
64	95-1,21RS-1	WASHINGTON	126	94
CONTRACT NO. 76D20				
ILLINOIS FED. AID PROJECT				