

Existing Structure: S.N. 095-0039(E.B.) and 095-0040(W.B.) built in 1971 as F.A.I. Route 64 over the main channel of the Kaskaskia River, Sec. 14, 95-1B-3 at Sta. 1854+35.02 (095-0039) and Sta. 1856+05.00 (095-0040). Existing structures consist of three span 48" web, continuous steel plate girder bridges, (87'-111'-87'). The back to back of abutments measure 289'-0" and the out to out bridge widths are 42'-6" with a 23° 44' skew. Stub abutments bear on concrete piles and solid wall piers bear on creosoted piles.

Structure Improvements include deck patching, sealing deck and parapets, modifying fixed bearings and placing polymer concrete and silicone joint seals at the expansion joints.

One lane of traffic in each direction is to be maintained during construction using stage construction.

No salvage.

### TOTAL BILL OF MATERIAL

ITEM	UNIT	TOTAL
Anchor Bolts, 1"	Each	48
Bridge Deck Concrete Sealer	Sq. Ft.	26980
Deck Slab Repair (Partial)	Sq. Yd.	220
Silicone Joint Sealer, 1.5"	Foot	177
Polymer Concrete	Cu. Ft.	6

### INDEX OF SHEETS

1. General Plan & Elevation
2. Staging Plan
3. Deck Patching Survey (Sheet 1 of 2)
4. Deck Patching Survey (Sheet 2 of 2)
5. Details
6. Temporary Concrete Barrier for Stage Construction

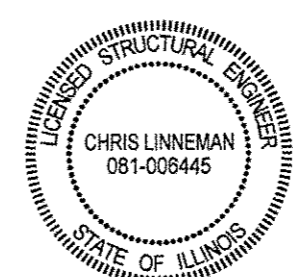
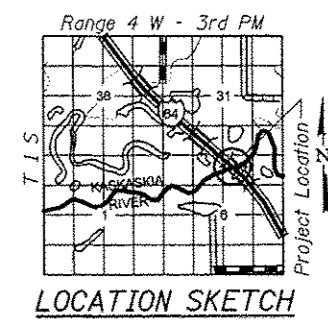
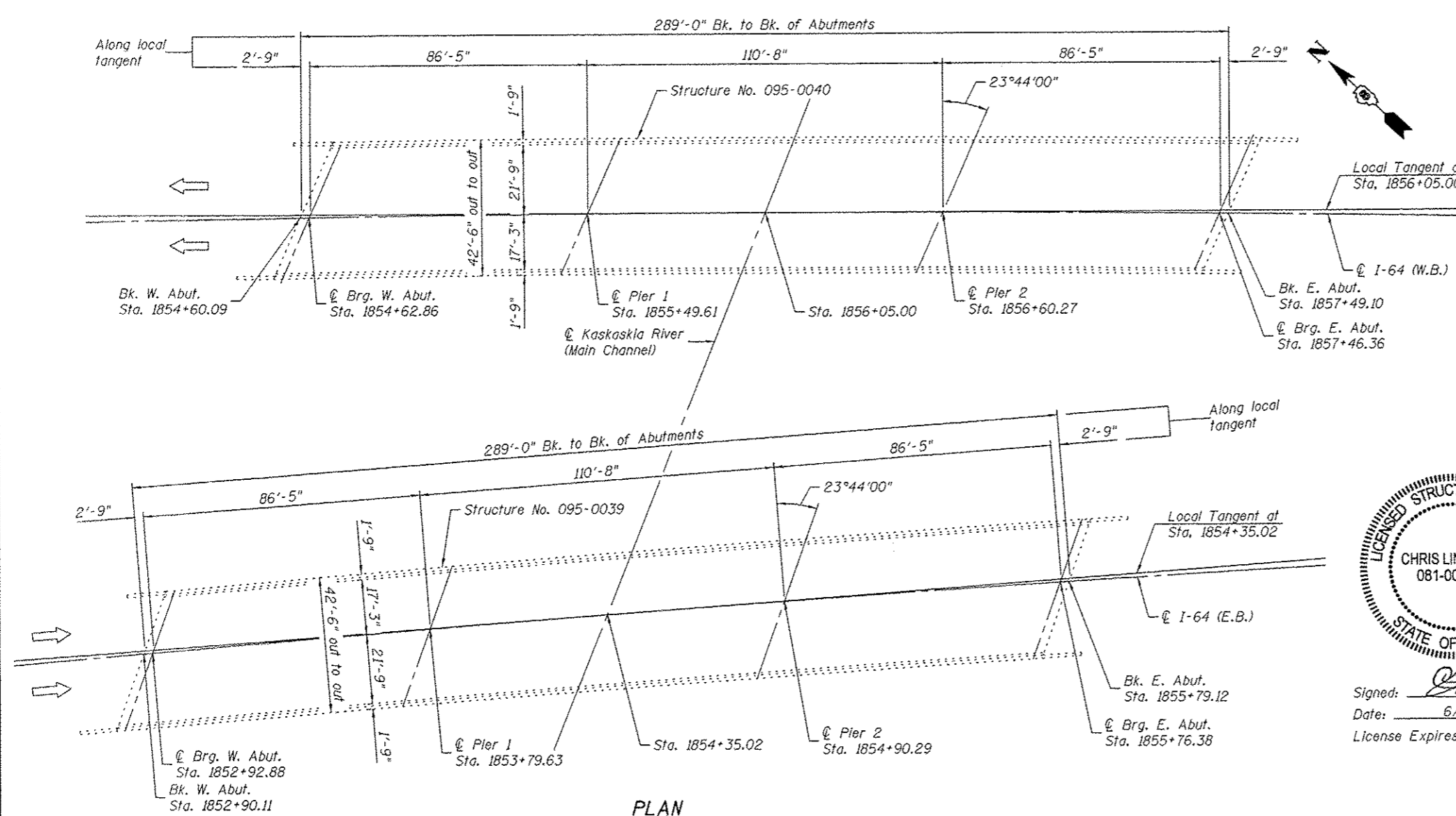
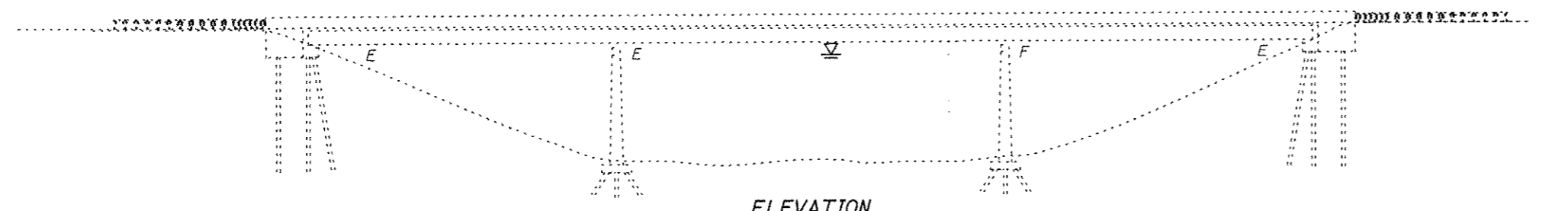
### SCOPE OF WORK

Seal deck and parapets, replace silicone joint sealer (full width), replace polymer concrete nosing (as directed), partial depth deck slab & existing 2<sup>3</sup>/<sub>8</sub>" microsilica overlay patching and installing anchor bolts at the fixed pier bearings.

### GENERAL NOTES:

Plan dimensions and details relative to existing plans are subject to nominal construction variations. The Contractor shall field verify existing dimensions and details affecting new construction and make necessary approved adjustments prior to construction or ordering of materials. Such variations shall not be cause for additional compensation for a change in scope of the work, however, the Contractor will be paid for the quantity actually furnished at the unit price bid for the work.

The existing structural steel coating contains lead. The Contractor shall take appropriate precautions to deal with the presence of lead on this project.



Signed: *[Signature]*  
 Date: 6/11/2014  
 License Expires: 11/30/2014

**GENERAL PLAN & ELEVATION**  
**F.A.I. 64 OVER KASKASKIA RIVER (MAIN CHANNEL)**  
**F.A.I. 64 - SECTION 95-(1,2)RS-1**  
**WASHINGTON COUNTY**  
**STA. 1856+05.00 (095-0040)**  
**STA. 1854+35.02 (095-0039)**  
**STRUCTURE NO. 095-0039 & 095-0040**

PRINT DATE: 6/11/2014 2:04:43 PM Y:\V2042 I-64 Bridge Repairs\DCN\Bridg\Final\Plot\095-0039-0040\0950039-0040-001-0PE.dgn

**EFK Moen, LLC**  
 Civil Engineering Design  
 303 Fountain Parkway, Suite 240  
 Fairview Heights, IL 62208  
 Phone 618-266-4250

USER NAME	DESIGNED	CHECKED	DRAWN	DATE
cdl	CDL	CTW	JA	6/11/2014

**STATE OF ILLINOIS**  
**DEPARTMENT OF TRANSPORTATION**

**GENERAL PLAN & ELEVATION**  
**STRUCTURE NO. 095-0039 & 095-0040**  
 SHEET NO. 1 OF 6 SHEETS

F.A.I. RTE.	SECTION	COUNTY	TOTAL SHEETS	SHEET NO.
64	95-(1,2)RS-1	WASHINGTON	126	97

CONTRACT NO. 76D20  
 ILLINOIS FED. AID PROJECT