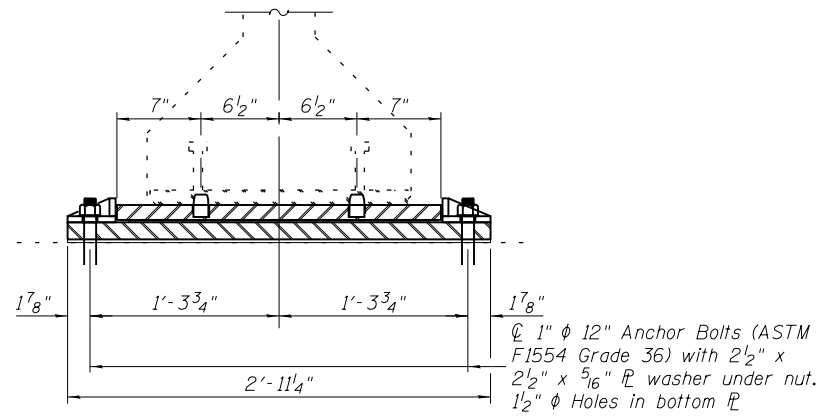
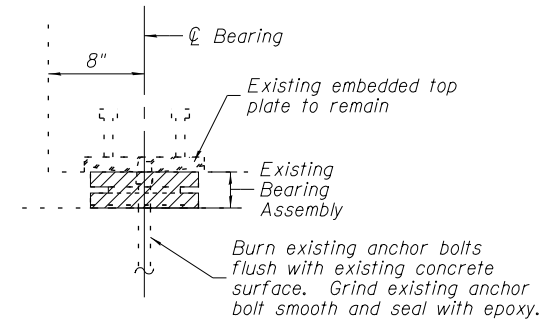


SECTION AT ABUT.



SECTION A-A

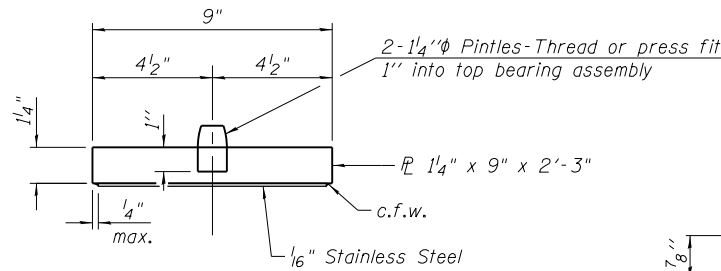


EXISTING BEARING REMOVAL DETAIL

Cost included with Jack and Remove Existing Bearings.

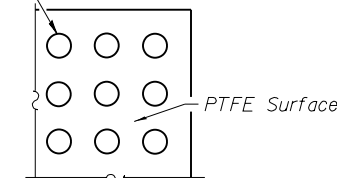
BEAM REACTIONS		
Q	(k)	30.9
L	(k)	41.7
Imp.	(k)	11.9
Total	(k)	84.5

TYPE II ELASTOMERIC EXP. BRG.

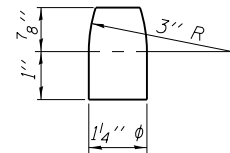


TOP BEARING ASSEMBLY

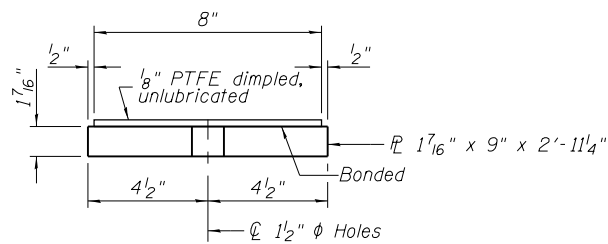
1/4" ϕ Dimples on 1/2" centers
1/16" deep, or equivalent.



PLAN-PTFE SURFACE

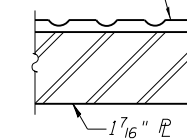


PINTLE



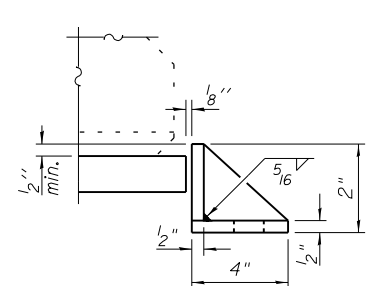
BOTTOM BEARING ASSEMBLY

1/8" PTFE with dimpled,
unlubricated surface



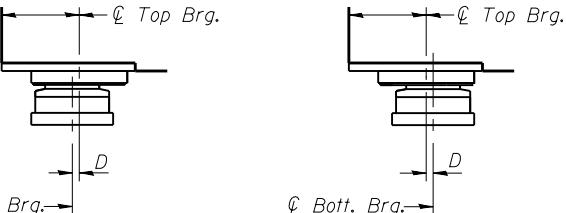
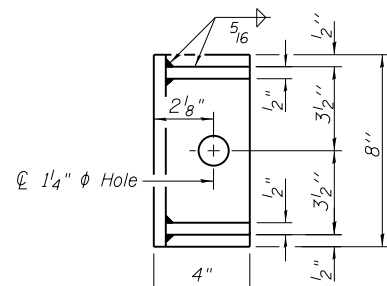
SECTION THRU PTFE

Notes:
Anchor bolts shall be ASTM F1554 all-thread (or an Engineer-approved alternate material) of the grade(s) and diameter(s) specified. The corresponding specified grade of AASHTO M314 anchor bolts may be used in lieu of ASTM F1554.
Anchor bolts for Type II bearings shall be placed in holes in the concrete drilled through holes in the bottom bearing plate after members are in place. Side retainers shall be placed after bolts are installed.
Drilled and set anchor bolts shall be installed according to Article 521.06 of the Standard Specifications.
Side retainers and other steel members required for the bearing assembly shall be included in the cost of Elastomeric Bearing Assembly, Type II (Special).
The 1/8" PTFE sheet shall be bonded directly to the top steel plate with a two-component, medium viscosity epoxy resin, conforming to the requirements of the Federal Specification MMM-A-134, Type I. The bond agent shall be applied on the full area of the contact surfaces.
Bonding of 1/8" PTFE sheet during vulcanizing process will be permitted provided the process and method of adjusting assembly height is approved by the Engineer.
All (embedded and separate) bearing plates, side retainers, anchor bolts, nuts, washers and pintles shall be galvanized according to AASHTO M111 or M232 as applicable.
Minimum jack size = 45 tons.



SIDE RETAINER

Equivalent rolled angle with stiffeners will be allowed in lieu of welded plates.



BELOW 50°F.

(Move bott. brg. away from fixed brg.)

ABOVE 50°F.

(Move bott. brg. toward fixed brg.)

SETTING ANCHOR BOLTS AT EXP. BRG.

D=1/8" per each 100' of expansion for every 15° temp. change from the normal temp. of 50°F.

BILL OF MATERIAL

Item	Unit	Total
Elastomeric Bearing Assembly, Type II (Special)	Each	28
Anchor Bolts, 1"	Each	56
Jack and Remove Existing Bearings	Each	28

PRINT DATE: 6/11/2014 2:30:26 PM Y:\2014\1-64 Bridge Repair\DCN\Brdge\Final\Plotsheets\095-0043_0044\0950043-00000-006-Brg_Details.dgn

EFK•Moen, LLC
Civil Engineering Design
303 Fountains Parkway, Suite 240
Fairview Heights, IL 62208
Phone 618-206-4250

USER NAME = cdl	DESIGNED - CDL	REVISED -
PLOT SCALE = 0.2" = 1' - 0"	CHECKED - CTW	REVISED -
PLOT DATE = 6/11/2014	DRAWN - JA	REVISED -
	DATE - 6/11/2014	REVISED -

STATE OF ILLINOIS
DEPARTMENT OF TRANSPORTATION

BEARING DETAILS
STRUCTURE NO. 095-0043 & 095-0044

SHEET NO. 6 OF 7 SHEETS

F.A.I. RTE.	SECTION	COUNTY	TOTAL SHEETS	SHEET NO.
64	95-1,21RS-1	WASHINGTON	126	114
CONTRACT NO. 76D20				
ILLINOIS FED. AID PROJECT				