

STATE OF ILLINOIS
DEPARTMENT OF TRANSPORTATION

F.A.I. RTE	SECTION	COUNTY	TOTAL SHEETS	SHEET NO
90	2020-203-BR	COOK	11	1
		ILLINOIS	CONTRACT NO. 62M76	

FOR INDEX OF SHEETS, SEE SHEET NO. 2

PROPOSED HIGHWAY PLANS

F.A.I. ROUTE 90: I-90 (KENNEDY EXPY)
OVER CTA & JEFFERSON PARK
SECTION: 2020-203-BR
BRIDGE REPAIR
COOK COUNTY

C-91-406-20

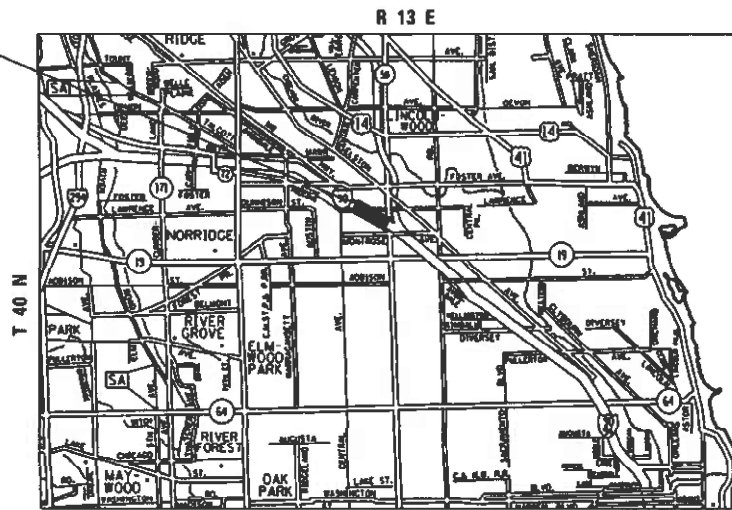
THIS PROJECT IS LOCATED
IN THE CITY OF CHICAGO

TRAFFIC DATA

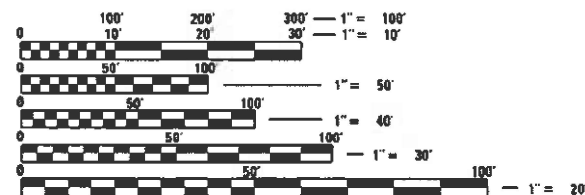
I-90

ADT 2019 = 157200
SPEED LIMIT = 55 MPH

PROJECT LOCATION
I-90 OVER CTA & JEFFERSON PARK
STRUCTURE NO.: 016-0 1



CHICAGO CITY TOWNSHIP



FULL SIZE PLANS HAVE BEEN PREPARED USING STANDARD
ENGINEERING SCALES. REDUCED SIZED PLANS WILL NOT
CONFORM TO STANDARD SCALES. IN MAKING MEASUREMENTS
ON REDUCED PLANS, THE ABOVE SCALES MAY BE USED.

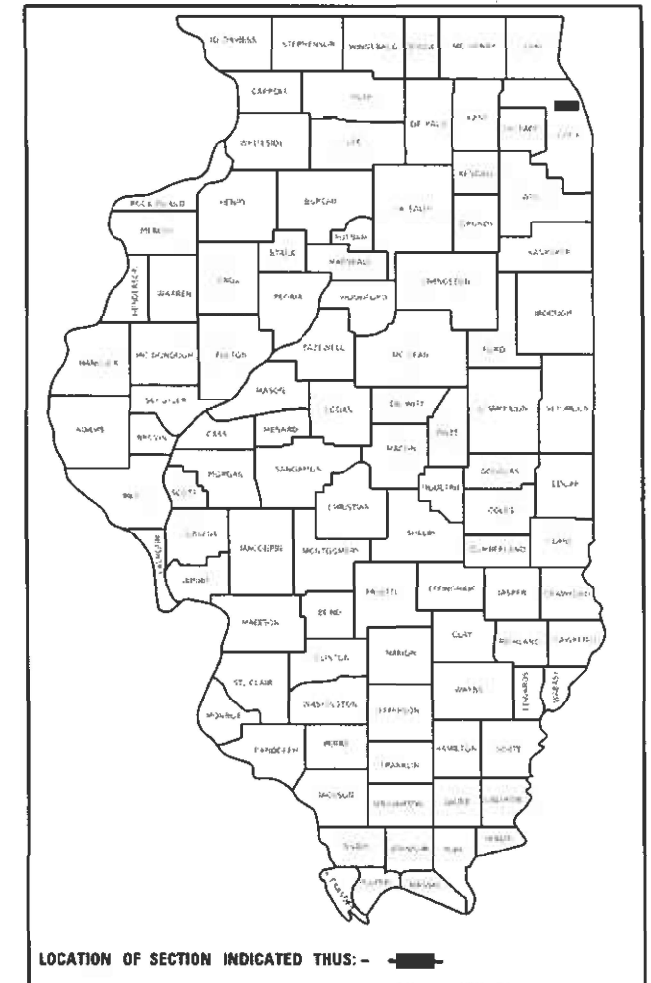
"C.U.A.N."
(CHICAGO UTILITY ALERT NETWORK) AT
(312)744-7000

PROJECT MANAGER: JEAN ALAIN MIDY (847)221-3056

GROSS & NET LENGTH = 600.0 FT. = 0.114 MILE

CONTRACT NO. 62M76

D-91-603-20



STATE OF ILLINOIS
DEPARTMENT OF TRANSPORTATION

SUBMITTED May 9 2021
Jose Elias REGIONAL ENGINEER
August 13, 2021
Scott A. Elk
ENGINEER OF DESIGN AND ENVIRONMENT
August 13, 2021
James J. Gu
DIRECTOR OF HIGHWAYS PROJECT IMPLEMENTATION

PRINTED BY THE AUTHORITY
OF THE STATE OF ILLINOIS

INDEX OF SHEETS

- 1 TITLE SHEET
- 2 INDEX OF SHEETS, STATE STANDARDS AND GENERAL NOTES
- 3 SUMMARY OF QUANTITIES
- 4-8 BRIDGE REPAIR PLAN
- 9 ENTRANCE AND EXIT RAMP CLOSURE DETAILS (TC-08)
- 10 TRAFFIC CONTROL DETAILS FOR FREEWAY SINGLE & MULTI-LANE WEAVE (TC-09)
- 11 TRAFFIC CONTROL DETAILS FOR FREEWAY SHOULDER CLOSURES AND PARTIAL RAMP CLOSURES (TC-17)

STATE STANDARDS

STANDARD NO.	DESCRIPTION
000001-08	STANDARD SYMBOLS, ABBREVIATIONS AND PATTERNS
701101-05	OFF-ROAD OPERATIONS, MULTILANE, 15' TO 24" FROM PAVEMENT EDGE
701400-10	APPROACH TO LANE CLOSURE, FREEWAY/EXPRESSWAY
701401-12	LANE CLOSURE, FREEWAY/EXPRESSWAY
701411-09	LANE CLOSURE, MULTILANE, AT ENTRANCE OR EXIT RAMP FOR SPEEDS > 45MPH
701428-01	TRAFFIC CONTROL SETUP AND REMOVAL FREEWAY/EXPRESSWAY
701446-11	TWO LANE CLOSURE, FREEWAY/EXPRESSWAY
701801-06	SIDEWALK, CORNER OR CROSSWALK CLOSURE
701901-08	TRAFFIC CONTROL DEVICES

GENERAL NOTES

1. THE CONTRACTOR SHALL COORDINATE CONSTRUCTION ACTIVITIES WITH UTILITY COMPANIES AND CITY OF CHICAGO.
2. BEFORE STARTING ANY EXCAVATION, THE CONTRACTOR SHALL CALL "C.U.A.N." (CHICAGO UTILITY ALERT NETWORK) AT (312)744-7000 FOR FIELD LOCATIONS OF BURIED ELECTRIC, TELEPHONE AND GAS UTILITIES. (48 HOUR NOTIFICATION IS REQUIRED).
3. PLAN DIMENSIONS AND DETAILS RELATIVE TO EXISTING PLANS ARE SUBJECT TO NOMINAL CONSTRUCTION VARIATIONS. THE CONTRACTOR SHALL FIELD VERIFY EXISTING DIMENSIONS AND DETAILS AFFECTING NEW CONSTRUCTION AND MAKE NECESSARY APPROVED ADJUSTMENTS PRIOR TO CONSTRUCTION OR ORDERING OF MATERIALS. SUCH VARIATIONS SHALL NOT BE CAUSE FOR ADDITIONAL COMPENSATION FOR A CHANGE IN SCOPE OF THE WORK, HOWEVER, THE CONTRACTOR WILL BE PAID FOR THE QUANTITY ACTUALLY FURNISHED BASED AT THE UNIT PRICE BID FOR THE WORK.
4. THE CONTRACTOR WILL NOT BE ALLOWED TO SET UP A YARD OR FIELD OFFICE ON STATE PROPERTY WITHOUT WRITTEN PERMISSION FROM THE DEPARTMENT.
5. THE CONTRACTOR SHALL USE FOLDER NUMBER (3285-04) WHEN COMMUNICATING WITH UPRR.
6. THE CONTRACTOR SHALL CONTACT THE DISTRICT ONE TRAFFIC CONTROL SUPERVISOR AT (847)705-4151 FOR EXPRESSWAYS A MINIMUM OF 72 HOURS IN ADVANCE OF BEGINNING WORK.
7. THESE PLANS HAVE BEEN PREPARED FROM NOTES RECEIVED FROM THE BUREAU OF MAINTENANCE BRIDGE INSPECTORS.
8. IT SHALL BE THE CONTRACTOR'S RESPONSIBILITY TO PROTECT AND MAINTAIN THE EXISTING BRIDGE LIGHTING AT ANY LOCATIONS THAT LIGHTING IS ENCOUNTERED ADJACENT TO AN AREA TO BE CLEANED AND PAINTED.
9. THE CONTRACTOR SHALL BE REQUIRED TO PROVIDE ACCESS TO ABUTTING PROPERTY AT ALL TIMES DURING THE CONSTRUCTION OF THIS PROJECT.
10. WHEN ARTIFICIAL LIGHTING IS UTILIZED IN NIGHTTIME OPERATIONS, THE CONTRACTOR SHALL EXERCISE THE OUTMOST PRECAUTIONS PREVENTING ADVERSE VISIBILITY TO THE MOTORING PUBLIC AND ADJACENT RESIDENTIAL AREAS.
11. THE CONTRACTOR SHALL REQUEST AND GAIN THE APPROVAL FROM THE ILLINOIS DEPARTMENT OF TRANSPORTATION'S EXPRESSWAY TRAFFIC OPERATIONS ENGINEER AT WWW.IDOTLCS.COM TWENTY FOUR (24) HOURS IN ADVANCE OF ALL DAILY LANE, RAMP AND SHOULDER CLOSURES. THIS ADVANCE NOTIFICATION IS CALCULATED BASED ON WORKWEEK OF MONDAY THROUGH FRIDAY AND SHALL NOT INCLUDE WEEKENDS OR HOLIDAYS.
12. THE CONTRACTOR SHALL TAKE NECESSARY PRECAUTIONS WHEN WORKING NEAR THE ABUTMENTS DUE TO ELECTRICAL JUNCTIONS BOXES AND ATTACHED CONDUITS.
13. THE CONTRACTOR SHALL TAKE NECESSARY PRECAUTIONS TO ENSURE THAT NO DEBRIS WILL ENDANGER OR INTERFERE WITH TRAFFIC ON THE ROADWAY OR THE RAILROAD BENEATH THE BRIDGE ACCORDING TO ARTICLE 107.09 OR 107.12 OF THE STANDARD SPECIFICATIONS. THIS WORK WILL NOT BE PAID FOR SEPARATELY BUT SHALL BE INCLUDED IN THE CONTRACT UNIT PRICE FOR THE APPROPRIATE PAY ITEM INVOLVED AND NO ADDITIONAL COMPENSATION WILL BE ALLOWED.
14. THE CONTRACTOR AT NO POINT DURING CONSTRUCTION ACTIVITIES SHALL BE ALLOWED TO CROSS ANY OF THE RAILROAD TRACKS AND UTILIZE THE EXISTING RAILROAD PLATFORM FOR ANY OPERATION.
15. DO NOT SCALE PLANS FOR CONSTRUCTION DIMENSIONS.

**STATE OF ILLINOIS
DEPARTMENT OF TRANSPORTATION**

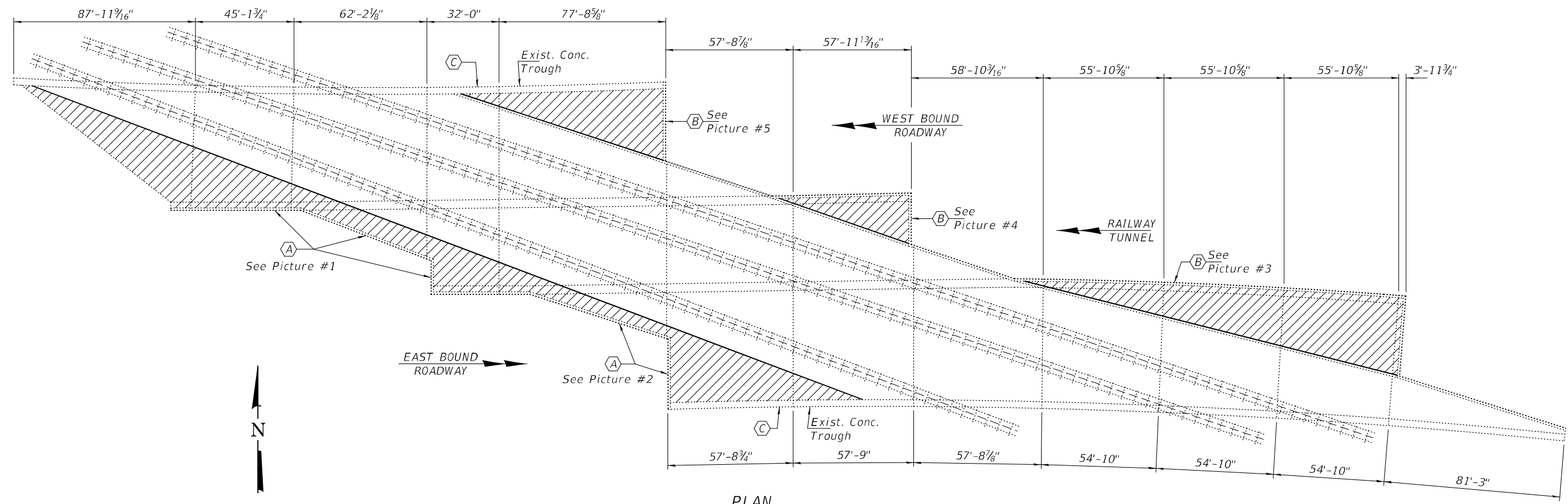
**INDEX OF SHEETS, STATE STANDARDS & GENERAL NOTES
I-90 (KENNEDY EXPWY.) OVER CTA & JEFFERSON PARK**

SCALE: SHEET OF SHEETS STA. TO STA.

F.A.I. RTE.	SECTION	COUNTY	TOTAL SHEETS	SHEET NO.
90	2020-203-BR	COOK	11	2
			CONTRACT NO. 62M76	
ILLINOIS FED. AID PROJECT				

SUMMARY OF QUANTITIES			URBAN TOTAL QUANTITIES	CONSTRUCTION TYPE CODE					
CODE NO	ITEM	UNIT		100% STATE 0013					
* 66900200	NON-SPECIAL WASTE DISPOSAL	CU YD	190	190					
* 66900530	SOIL DISPOSAL ANALYSIS	EACH	2	2					
* 66901001	REGULATED SUBSTANCES PRE-CONSTRUCTION PLAN	LSUM	1	1					
* 66901003	REGULATED SUBSTANCES FINAL CONSTRUCTION REPORT	LSUM	1	1					
* 66901006	REGULATED SUBSTANCES MONITORING	CAL DA	5	5					
67000400	ENGINEER'S FIELD OFFICE, TYPE A	CAL MO	12	12					
67100100	MOBILIZATION	L SUM	1	1					
70200100	NIGHTTIME WORK ZONE LIGHTING	L SUM	1	1					
X0322121	SHEET WATERPROOFING MEMBRANE SYSTEM	SO YD	1220	1220					
X7011015	TRAFFIC CONTROL AND PROTECTION (EXPRESSWAYS)	L SUM	1	1					
Z0048665	RAILROAD PROTECTIVE LIABILITY INSURANCE	L SUM	1	1					
* SPECIALTY ITEM									

SUMMARY OF QUANTITIES				CONSTRUCTION TYPE CODE					
CODE NO	ITEM	UNIT	TOTAL QUANTITIES						



PLAN

- (A) - Sheet Waterproofing Membrane System
(See Pictures on sheet 2 of 5.)
(See Details on sheet 3 of 5.)
- (B) - Sheet Waterproofing Membrane System
(See Pictures on sheet 2 of 5.)
(See Details on sheet 4 of 5.)
- (C) - Clean out existing Concrete Trough
and the existing Drain Pipes.

GENERAL NOTES

Plan dimensions and details relative to existing plans are subject to nominal construction variations. The Contractor shall field verify existing dimensions and details affecting new construction and make necessary approved adjustments prior to construction or ordering of materials. Such variations shall not be cause for additional compensation for a change in scope of the work, however, the Contractor will be paid for the quantity actually furnished at the unit price bid for the work.

TOTAL BILL OF MATERIAL

ITEM	UNIT	QUANTITY
Sheet Waterproofing Membrane System	Sq. Yd.	1220



Expires: November 30, 2022

DESIGNED - Victor H. Veliz	EXAMINED - <i>Timothy A. Decker</i> ENGINEER OF STRUCTURAL SERVICES	DATE - AUGUST 11, 2021	STATE OF ILLINOIS DEPARTMENT OF TRANSPORTATION	GENERAL PLAN SN 016-0515	F.A.I. RTE. 90	SECTION 2020-203-BR	COUNTY COOK	TOTAL SHEETS 11	SHEET NO. 4
CHECKED - Adrian T. Halloway	PASSED - <i>David Carl Puzey</i> ENGINEER OF BRIDGES AND STRUCTURES	REVISED -			CONTRACT NO. 62M76				
DRAWN - STEFFEN		REVISED -			ILLINOIS FED. AID PROJECT				
CHECKED - VHV ATH					SHEET NO. 1 OF 5 SHEETS				



PICTURE #1



PICTURE #2



PICTURE #3





PICTURE #4



PICTURE #5

DESIGNED - VHV
 CHECKED - ATH
 DRAWN - STEFFEN
 CHECKED - VHV ATH

EXAMINED
 PASSED

 ENGINEER OF STRUCTURAL SERVICES

 ENGINEER OF BRIDGES AND STRUCTURES

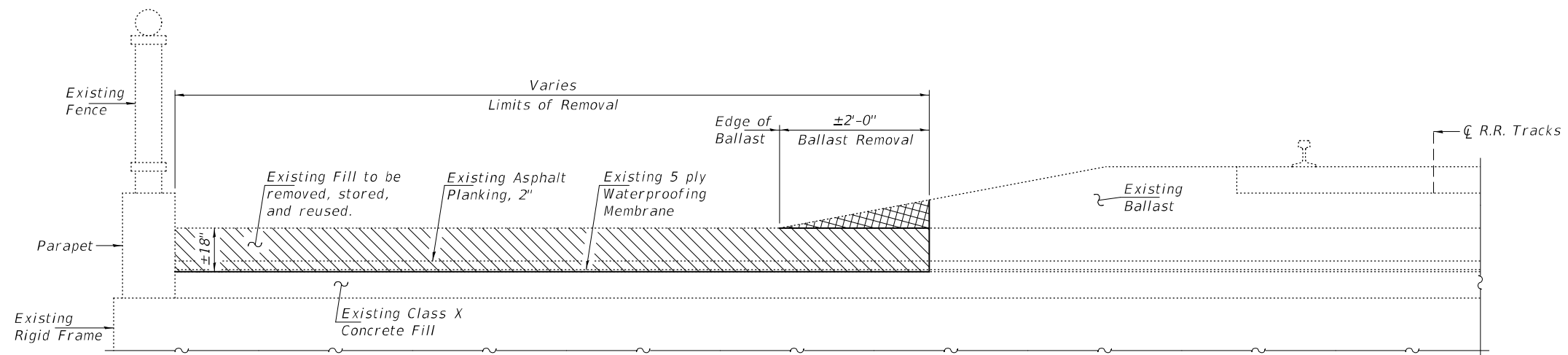
DATE - AUGUST 11, 2021
 REVISED -
 REVISED -

STATE OF ILLINOIS
 DEPARTMENT OF TRANSPORTATION

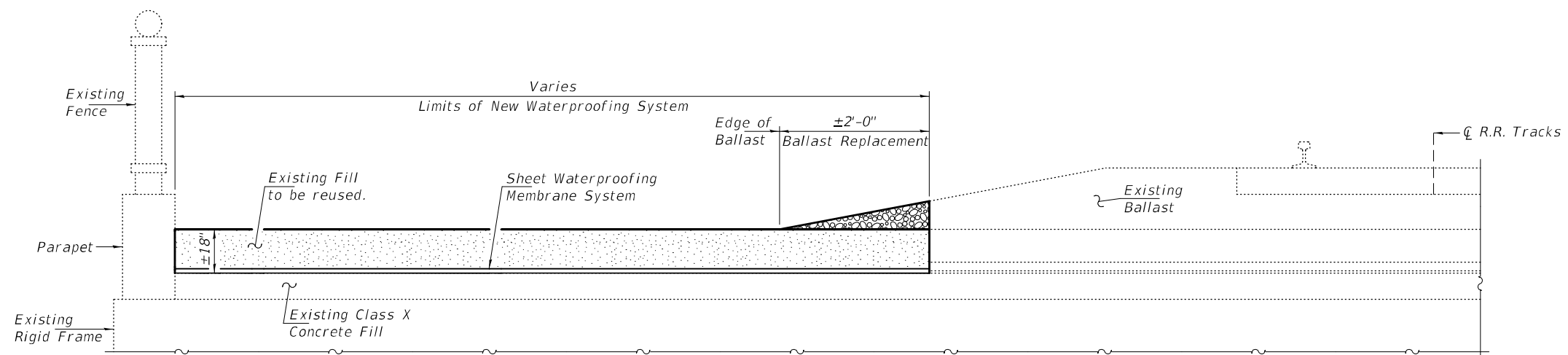
REPAIR LOCATION PICTURES
 SN 016-0515

SHEET NO. 2 OF 5 SHEETS

F.A.I. RTE.	SECTION	COUNTY	TOTAL SHEETS	SHEET NO.
90	2020-203-BR	COOK	11	5
ILLINOIS FED. AID PROJECT			CONTRACT NO. 62M76	



REPAIR "A" - REMOVAL DETAILS



REPAIR "A" - REPLACEMENT DETAILS

DESIGNED - VHV
 CHECKED - ATH
 DRAWN - STEFFEN
 CHECKED - VHV ATH

EXAMINED
 PASSED
Timothy A. Doolittle
 ENGINEER OF STRUCTURAL SERVICES
Carl Rieger
 ENGINEER OF BRIDGES AND STRUCTURES

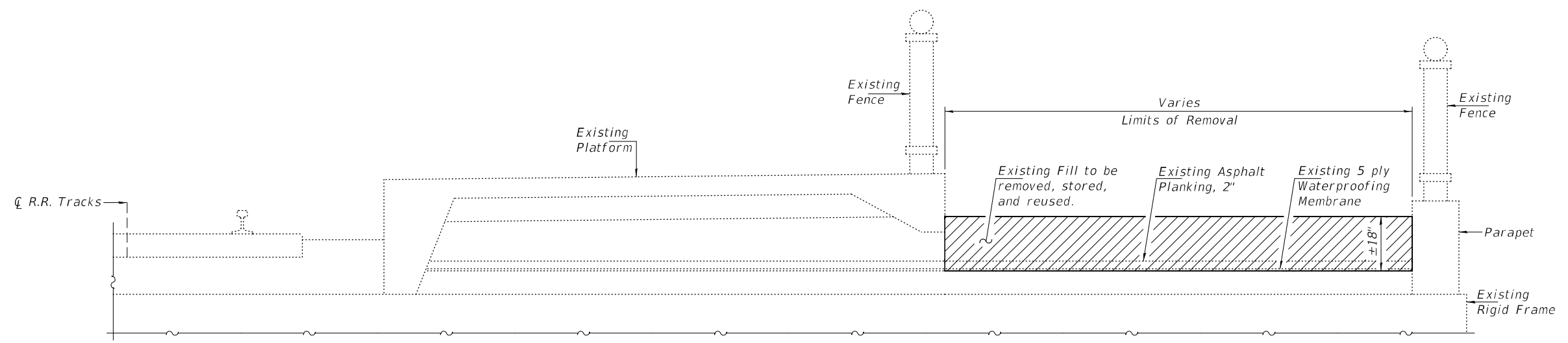
DATE - AUGUST 11, 2021
 REVISED -
 REVISED -

STATE OF ILLINOIS
 DEPARTMENT OF TRANSPORTATION

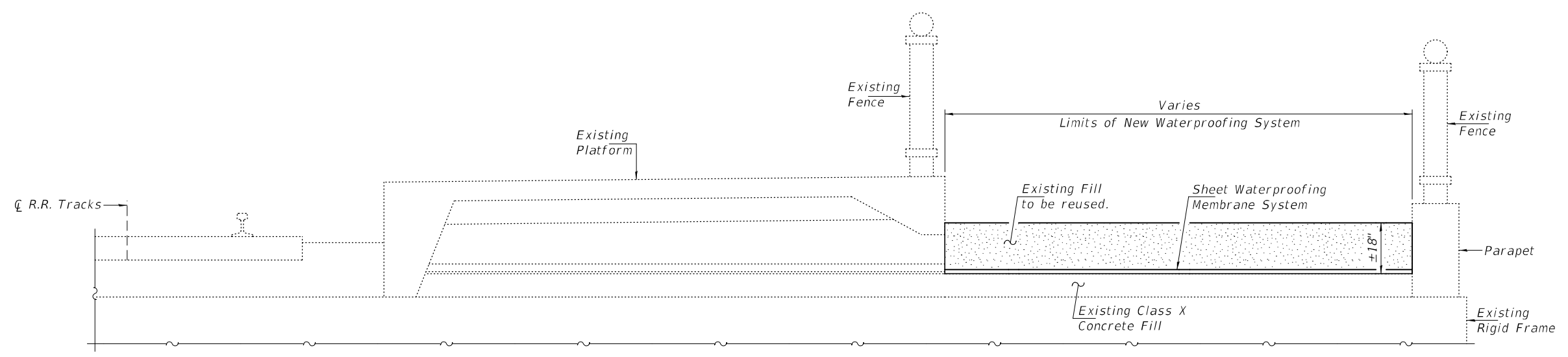
REPAIR "A" DETAILS
 SN 016-0515

SHEET NO. 3 OF 5 SHEETS

F.A.I. RTE.	SECTION	COUNTY	TOTAL SHEETS	SHEET NO.
90	2020-203-BR	COOK	11	6
ILLINOIS FED. AID PROJECT			CONTRACT NO. 62M76	



REPAIR "B" - REMOVAL



REPAIR "B" - REPLACEMENT

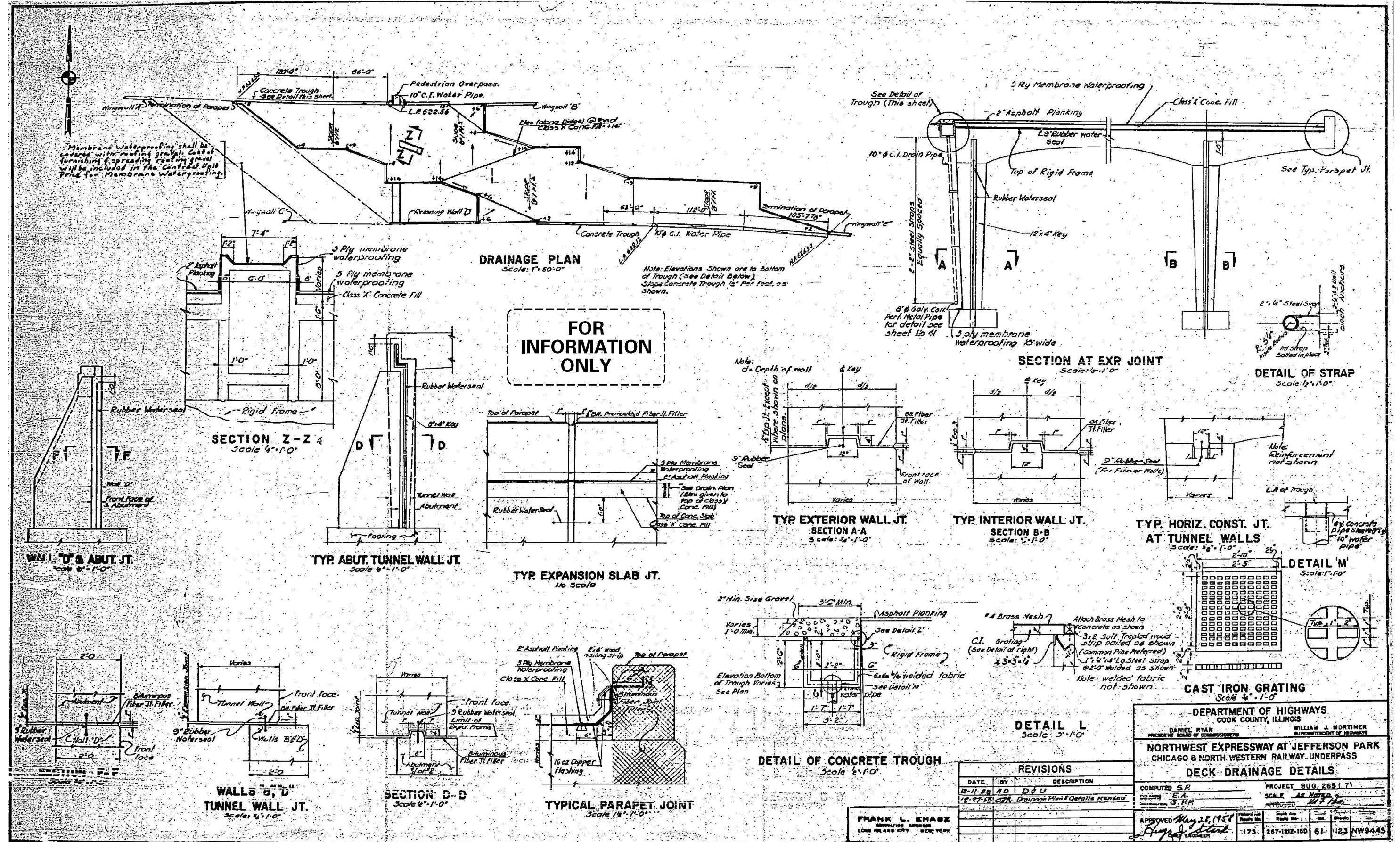
DESIGNED - VHV	EXAMINED	DATE - AUGUST 11, 2021
CHECKED - ATH	<i>Timothy A. Doolittle</i> ENGINEER OF STRUCTURAL SERVICES	REVISED -
DRAWN - STEFFEN	PASSED	REVISED -
CHECKED - VHV ATH	<i>Carl Rieger</i> ENGINEER OF BRIDGES AND STRUCTURES	

STATE OF ILLINOIS
DEPARTMENT OF TRANSPORTATION

REPAIR "B" DETAILS
SN 016-0515

SHEET NO. 4 OF 5 SHEETS

F.A.I. RTE.	SECTION	COUNTY	TOTAL SHEETS	SHEET NO.
90	2020-203-BR	COOK	11	7
ILLINOIS FED. AID PROJECT			CONTRACT NO. 62M76	



FOR
INFORMATION
ONLY

REVISIONS		
DATE	BY	DESCRIPTION
12-11-58	AD	D & U
1-2-59	AD	Drainage Plan & Details Revised

DEPARTMENT OF HIGHWAYS
COOK COUNTY, ILLINOIS

DANIEL RYAN
PRESIDENT BOARD OF COMMISSIONERS

WILLIAM J. MORTIMER
SUPERINTENDENT OF HIGHWAYS

NORTHWEST EXPRESSWAY AT JEFFERSON PARK
CHICAGO & NORTH WESTERN RAILWAY UNDERPASS

DECK DRAINAGE DETAILS

COMPUTED BY S.P.	PROJECT BUG 265 (17)
SCALE AS NOTED	APPROVED MAY 28, 1958
APPROVED FRANK L. SHAGZ	APPROVED [Signature]
DATE MAY 28, 1958	SCALE AS NOTED
NO. SHEETS 173	NO. SHEETS 61
NO. SHEETS 267-1212-150	NO. SHEETS 123 NW9445

DESIGNED - VHV
CHECKED - ATH
DRAWN - STEFFEN
CHECKED - VHV ATH

EXAMINED
PASSED

Timothy A. Daulton
ENGINEER OF STRUCTURAL SERVICES

Carl R. [Signature]
ENGINEER OF BRIDGES AND STRUCTURES

DATE - AUGUST 11, 2021
REVISED -
REVISED -

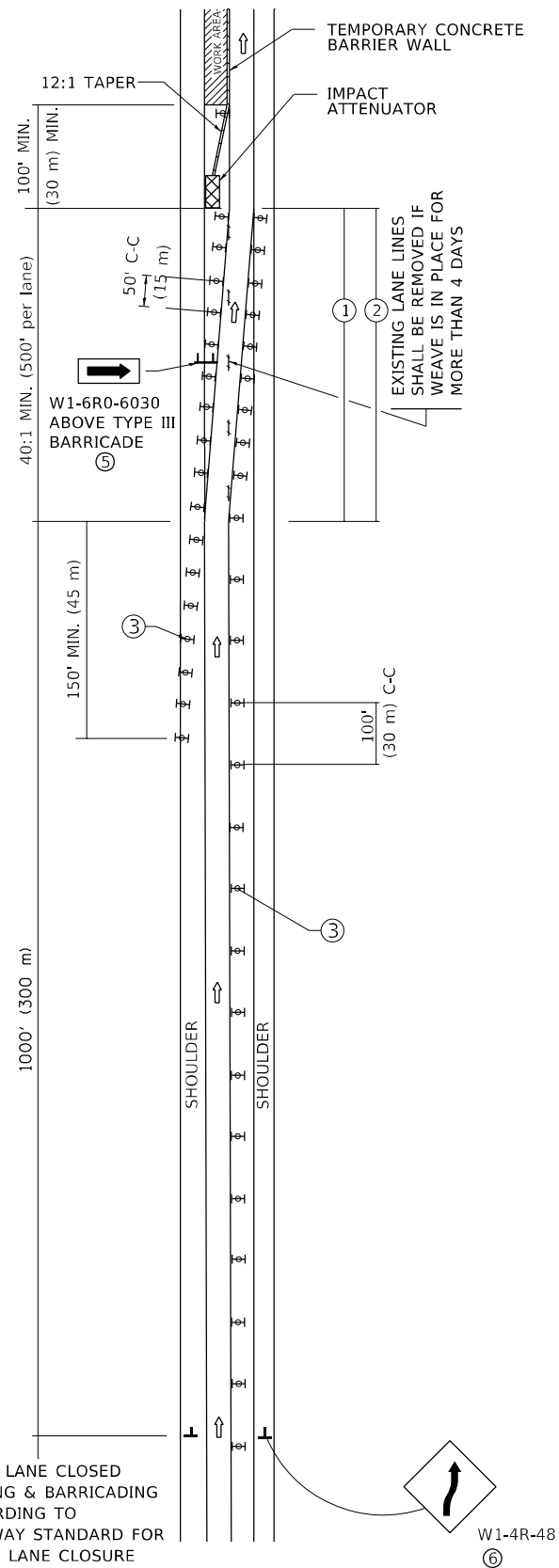
STATE OF ILLINOIS
DEPARTMENT OF TRANSPORTATION

EXISTING DRAINAGE DETAILS - FOR INFORMATION ONLY
SN 016-0515

SHEET NO. 5 OF 5 SHEETS

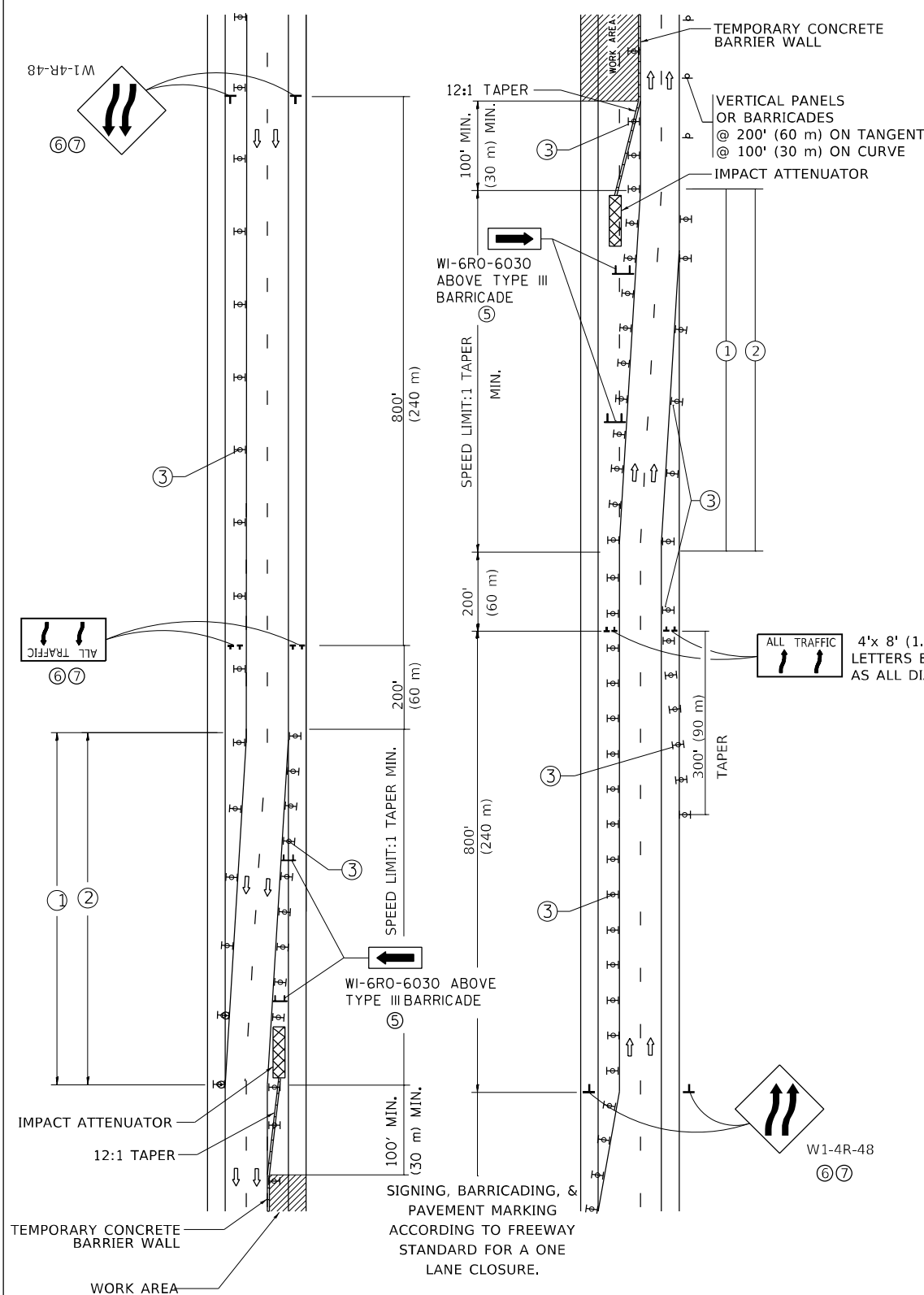
F.A.I. RTE.	SECTION	COUNTY	TOTAL SHEETS	SHEET NO.
90	2020-203-BR	COOK	11	8
CONTRACT NO. 62M76				
ILLINOIS		FED. AID PROJECT		

SINGLE LANE WEAVE



RIGHT LANE CLOSED SIGNING & BARRICADING ACCORDING TO FREEWAY STANDARD FOR A ONE LANE CLOSURE

MULTI-LANE WEAVE



GENERAL NOTES:

- ① EXISTING CONFLICTING PAVEMENT MARKING LINES SHALL BE REMOVED. PAVEMENT MARKING REMOVAL SHALL NOT BE REQUIRED FOR SINGLE LANE WEAVES UNDER 4 DAYS IN DURATION.
- ② CONTINUOUS REFLECTIVE TEMPORARY PAVEMENT MARKING TAPE SHALL BE PLACED THROUGHOUT THE TAPER AND FOR 300' (90 m) ALONG SIDE THE WORK AREA WHERE THE CLOSURE TIME IS GREATER THAN FOURTEEN DAYS. THE LEFT EDGE LINE SHALL BE YELLOW AND THE RIGHT EDGE LINE SHALL BE WHITE. FOR MULTI-LANE WEAVES LANE LINES SHALL BE 5 INCH, 10'-30' (3 m-9 m) SKIP DASH, WHITE.
- ③ PLASTIC DRUMS WITH STEADY BURN LIGHTS AT 50' (15 m) C-C SPACING IN TAPERS AND 100' (30 m) C-C SPACING IN TANGENTS.
- ④ ALL SIGNS SHALL BE POST MOUNTED IF THE CLOSURE TIME EXCEEDS FOUR DAYS.
- ⑤ TYPE III BARRICADES MAY BE OMITTED FOR SINGLE-LANE WEAVES UNDER 24-HOURS IN DURATION. W1-6 SIGNS WILL STILL BE REQUIRED. IF THE WIDTH OF OFFSET IS LESS THAN 6' THEN THE TYPE III BARRICADE WITH ATTACHED ARROW SIGN PANEL CAN BE ELIMINATED IN THE TAPER AREAS.
- ⑥ WHEN THE LENGTH OF THE SHIFTED SEGMENT (DISTANCE BETWEEN WEAVE POINTS) IS LESS THAN 1500', DOUBLE REVERSE CURVE SIGNS (W24-1) SHOULD BE USED INSTEAD OF THE REVERSE CURVE (W1-4) SIGNS. ARROWS ON THE 4'X8' "ALL TRAFFIC" SIGNS SHALL BE THE SAME SHAPE.
- ⑦ THE NUMBER OF ARROWS ON THESE SIGNS SHALL MATCH THE NUMBER OF LANES OPEN TO TRAFFIC.

SYMBOLS

- DIRECTION OF TRAFFIC
- WORK AREA
- SIGN ON PORTABLE OR PERMANENT SUPPORT
- TYPE II BARRICADE OR DRUM WITH MONO-DIRECTIONAL STEADY BURNING LIGHT
- TEMPORARY CONCRETE BARRIER WALL
- IMPACT ATTENUATOR
- W1-4R-48
- W24-1-48

ALL DIMENSIONS ARE IN INCHES (MILLIMETERS) UNLESS OTHERWISE SHOWN

MODEL: Default
FILE NAME: p:\pub\hassan\dot\Documents\DOT_Offices\Distric: 1\Project\160320\CaddData\Design\Dist54.dgn

USER NAME = hassan	DESIGNED - D.W.S.	REVISED - J.A.F. 02-06
	DRAWN -	REVISED - S.P.B. 01-07
PLOT SCALE = 100,0000' / in.	CHECKED -	REVISED - S.P.B. 12-09
PLOT DATE = 7/16/2021	DATE - 02-87	REVISED - M.D. 06-13

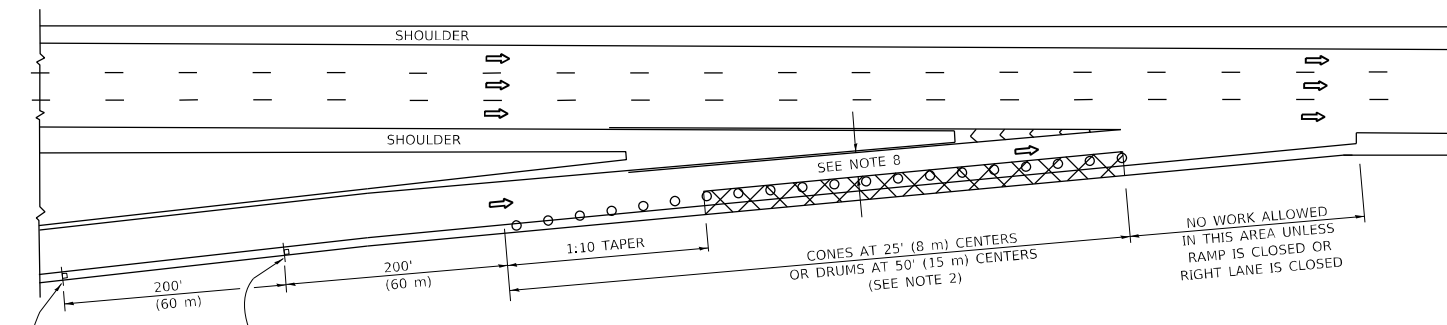
**STATE OF ILLINOIS
DEPARTMENT OF TRANSPORTATION**

**TRAFFIC CONTROL DETAILS FOR
FREEWAY SINGLE & MULTI-LANE WEAVE**

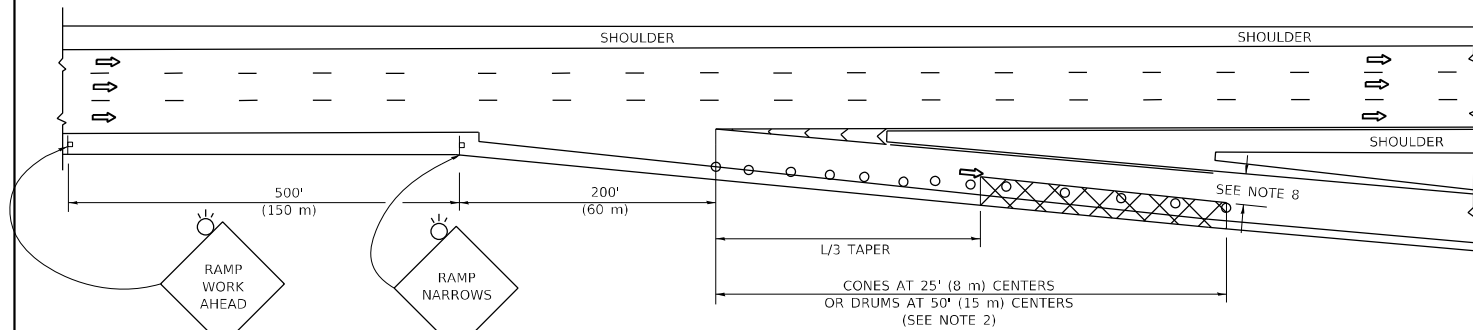
SCALE: NONE SHEET 1 OF 1 SHEETS STA. TO STA.

F.A.I. RTE.	SECTION	COUNTY	TOTAL SHEETS	SHEET NO.
90	2020-203-BR	COOK	11	10
TC-09		CONTRACT NO. 62M76		
ILLINOIS FED. AID PROJECT				

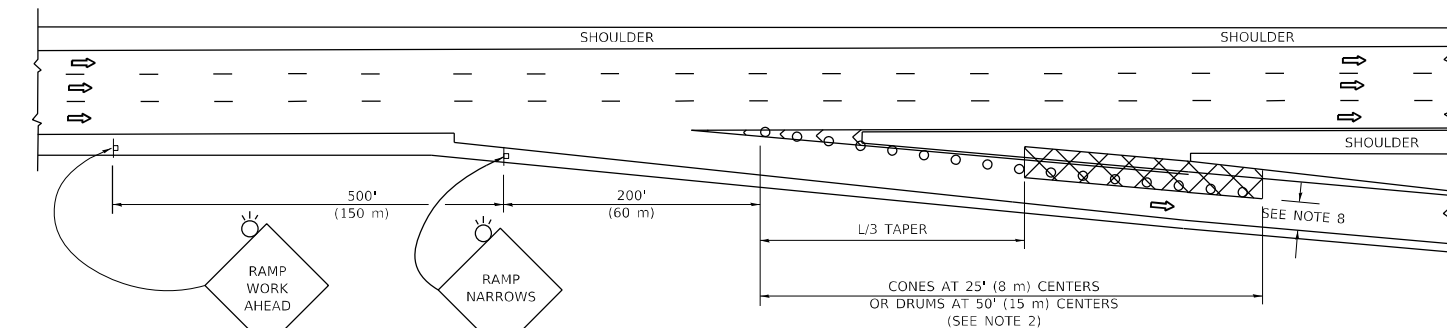
PARTIAL RAMP CLOSURE DETAILS



TYPICAL ENTRANCE RAMP



TYPICAL EXIT RAMP



TYPICAL EXIT RAMP

SYMBOLS

- ACTIVE WORK AREA
- SIGN ON PORTABLE OR PERMANENT SUPPORT
- FLAGGER WITH CONTROL SIGN
- TYPE II BARRICADE OR DRUM
- CONE, DRUM OR BARRICADE
- IMPACT ATTENUATOR OF TYPE AND TEST LEVEL SPECIFIED

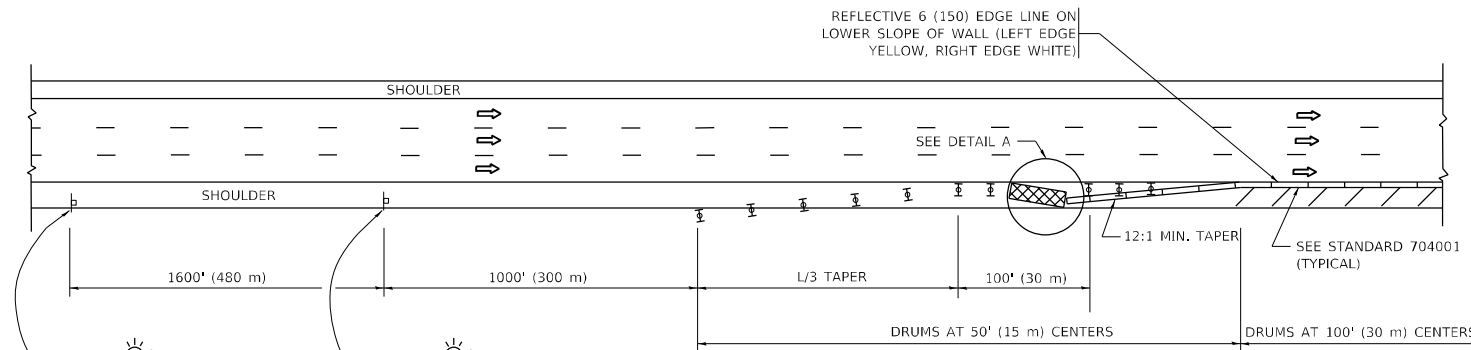
GENERAL NOTES:

- THE "L" DISTANCE EQUALS:

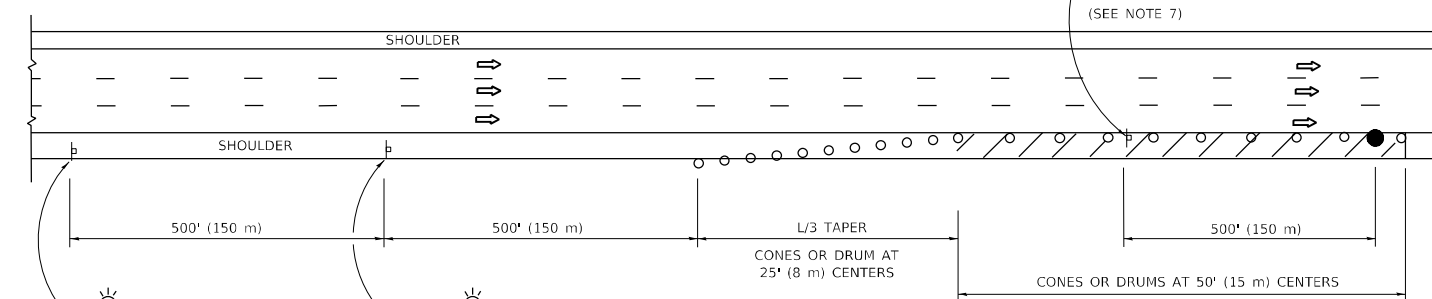
$L = \frac{W \cdot S}{S - V}$	$L = \frac{W \cdot S}{S - V}$
45 mph (80 km/h) OR GREATER:	METRIC ENGLISH
$L = 0.65(W/S)$	$L = (W/S)$

W = WIDTH OF OFFSET IN FEET (METERS)
 S = NORMAL POSTED SPEED MPH (KM/H)
- TYPE II BARRICADES OR DRUMS ARE REQUIRED FOR ALL NIGHTTIME CLOSURES. TYPE II BARRICADES OR DRUMS WITH MONODIRECTIONAL STEADY BURN LIGHTS ARE REQUIRED FOR DELINEATING OBSTACLES, EXCAVATIONS, OR HAZARDS EXCEEDING 100 FT (30m) IN LENGTH AT NIGHT.
- ALL SIGNS SHALL BE POST MOUNTED IF THE CLOSURE TIME EXCEEDS FOUR DAYS.
- FLASHING LIGHTS SHALL BE USED DURING THE HOURS OF DARKNESS AND SHALL BE INSTALLED ABOVE THE FIRST TWO SETS OF SIGNS.

SHOULDER CLOSURE DETAILS



PERMANENT SHOULDER CLOSURE



TEMPORARY SHOULDER CLOSURE

THIS DETAIL IS USED WHERE:
 1. VEHICLES, EQUIPMENT, WORKERS OR THEIR ACTIVITIES ENCR OACH IN AN AREA CLOSER THAN 15' (4.5 m) TO THE EDGE OF PAVEMENT FOR A PERIOD IN EXCESS OF 15 MINUTES.



**DETAIL "A"
 IMPACT ATTENUATOR, TEMPORARY
 (SEE NOTE 5)**

- THE IMPACT ATTENUATOR, TEMPORARY IS NOT REQUIRED WHEN THE TEMPORARY CONCRETE BARRIER WALL IS PROTECTED BY OR IS TIED INTO THE EXISTING GUARDRAIL. IF OFFSET IS LESS THAN 5 FEET USE NARROW USE TYPE DEVICE TO MEET NCHRP350/MASH.
- AUTHORIZATION FROM THE DISTRICT'S BUREAU OF TRAFFIC IS REQUIRED FOR ALL FREEWAY CLOSURES.
- THE FLAGGER AND FLAGGER SIGN ARE REQUIRED AT THE ABOVE WORK SITES WHEN:
 - FOUR OR MORE WORK VEHICLES ENTER THE TRAFFIC LANES IN A ONE HOUR PERIOD.
 - THE WORK AVTIVITY REQUIRES FREQUENT ENCR OACHMENT INTO THE LANE OPEN TO TRAFFIC.
 THE FLAGGER SHALL BE STATIONED APPROXIMATELY 100' (30 m) TO 200' (60 m) IN ADVANCE OF THE WORKERS.
- 12' MIN. WIDTH TANGENT SECTION
 16' MIN. WIDTH CURVE SECTION.
- TEMPORARY SHOULDER AND NON-SYSTEM INTERCHANGE PARTIAL RAMP CLOSURES ARE ALLOWED WEEKDAYS BETWEEN 9:00 A.M. AND 3:00 P.M. AND BETWEEN 7:00 P.M. AND 5:00 A.M. OR AS APPROVED BY THE EXPRESSWAY TRAFFIC OPERATIONS ENGINEER. PERMANENT SHOULDER AND PARTIAL RAMP CLOSURES WILL ONLY BE PERMITTED IF CALLED FOR IN THE PLANS OR AS APPROVED BY THE EXPRESSWAY OPERATIONS ENGINEER.

ALL DIMENSIONS ARE IN INCHES (MILLIMETERS) UNLESS OTHERWISE SHOWN.

MODEL: Default
 FILE NAME: p:\mhammond.dwt\illinois\dot\Documents\DOT Office\Drawings\1\Projects\ID160320\CADDData\Design\DCS54.dgn

USER NAME = hassan	DESIGNED -	REVISED - S.P.B. 12-09
	DRAWN - D.W.S.	REVISED - M.D. 06-13
PLOT SCALE = 100,0000' / in.	CHECKED -	REVISED - M.D. 01-18
PLOT DATE = 7/16/2021	DATE - 11-96	REVISED - M.D. 10-20

**STATE OF ILLINOIS
 DEPARTMENT OF TRANSPORTATION**

**TRAFFIC CONTROL DETAILS FOR FREEWAY
 SHOULDER CLOSURES AND PARTIAL RAMP CLOSURES**

SCALE: NONE SHEET 1 OF 1 SHEETS STA. TO STA.

F.A.I. RTE.	SECTION	COUNTY	TOTAL SHEETS	SHEET NO.
90	2020-203-BR	COOK	11	11
TC-17			CONTRACT NO. 62M76	
ILLINOIS FED. AID PROJECT				