

F.A.U. RTE.	SECTION	COUNTY	TOTAL SHEETS	SHEET NO.
*	**	KANKAKEE	109	1

• FAU ROUTE 6176 (ARMOUR ROAD)  
 •• SECTION (79)W&RS & 140RS  
**D-93-062-02**  
**D-93-043-05**

*AS-BUILT*

INDEX OF SHEETS

1. COVER SHEET
2. GENERAL NOTES
- 3 - 7. SUMMARY OF QUANTITIES
- 8 - 11. TYPICAL SECTIONS
- 12 - 16. SCHEDULE OF QUANTITIES
- 17 - 25. PLAN AND PROFILE-ARMOUR ROAD
- 26 - 28. PLAN AND PROFILE-SIDE STREETS
- 29 - 33. RIGHT OF WAY PLANS
- 34 - 46. TRAFFIC SIGNAL PLANS
- 47 - 54. PAVEMENT MARKING PLANS
- 55 - 58. EROSION CONTROL PLANS
59. CULVERT EXTENSION DETAILS
60. INTERSECTION DETAILS-EDGEMERE DRIVE & STADIUM DRIVE
61. INTERSECTION DETAILS-EDWIN STREET & WASHINGTON STREET
62. KROGER ENTRANCE DETAILS
- 63 - 65. DETAILS
- 66 - 67. BRIDGE RAIL DETAILS
- 68 - 69. EXISTING BRIDGE PLANS (FOR INFORMATION ONLY)
- 70 - 105. CROSS SECTIONS (ARMOUR ROAD)
106. CROSS SECTIONS (EDGEMERE DRIVE)
107. CROSS SECTIONS (STADIUM DRIVE)
108. CROSS SECTIONS (EDWIN STREET)
109. CROSS SECTIONS (WASHINGTON AVENUE)

STANDARDS

- 000001-05 STANDARD SYMBOLS, ABBREVIATIONS, AND PATTERNS
- 001001-02 AREAS OF REINFORCEMENT BARS
- 280001-04 TEMPORARY EROSION CONTROL SYSTEMS
- 420001-07 PAVEMENT JOINTS
- 424001-05 CURB RAMPS FOR SIDEWALKS
- 442101-07 CLASS B PATCHES
- 442201-03 CLASS C AND D PATCHES
- 542301-02 PRECAST REINFORCED CONCRETE FLARED END SECTION
- 602011-01 CATCH BASIN, TYPE C
- 602401-02 MANHOLE, TYPE A
- 602406-03 MANHOLE, TYPE A, 1.8 m (6') DIAMETER
- 602416-01 MANHOLE, TYPE A, 2.4 m (8') DIAMETER
- 602601-02 PRECAST REINFORCED CONCRETE FLAT SLAB TOP
- 602701-02 MANHOLE STEPS
- 604001-03 FRAME AND LIDS, TYPE 1
- 604006-04 FRAME AND GRATE, TYPE 3
- 604016-02 FRAME AND GRATE, TYPE 4
- 604036-02 GRATE, TYPE 8
- 606001-04 CONCRETE CURB TYPE B AND COMBINATION CONCRETE CURB AND GUTTER
- 606301-04 PC CONCRETE ISLAND AND MEDIANS
- 630001-08 STEEL PLATE BEAM GUARDRAIL
- 631011-05 TRAFFIC BARRIER TERMINAL, TYPE 2
- 631032-04 TRAFFIC BARRIER TERMINAL, TYPE 6A
- 635006-03 REFLECTOR AND TERMINAL MARKER PLACEMENT
- 635011-02 REFLECTOR MARKER AND MOUNTING DETAILS
- 701606-06 URBAN LANE CLOSURE, MULTILANE, 2W WITH MOUNTABLE MEDIAN
- 701701-06 URBAN LANE CLOSURE, MULTILANE INTERSECTION
- 701801-04 LANE CLOSURE MULTILANE 1W OR 2W CROSSWALK OR SIDEWALK CLOSURE
- 701901-01 TRAFFIC CONTROL DEVICES
- 720001-01 SIGN PANEL MOUNTING DETAILS
- 720016-02 MAST ARM MOUNTED STREET NAME SIGNS
- 780001-02 TYPICAL PAVEMENT MARKINGS
- 781001-03 TYPICAL APPLICATIONS RAISED REFLECTIVE PAVEMENT MARKERS
- 805001-01 ELECTRIC SERVICE INSTALLATION DETAILS
- 814001-02 HANDHOLES
- 814006-02 DOUBLE HANDHOLES
- 857001-01 STANDARD PHASE DESIGNATION DIAGRAMS AND PHASE SEQUENCES
- 862001-01 UNINTERRUPTIBLE POWER SUPPLY (UPS)
- 873001-02 TRAFFIC SIGNAL GROUNDING AND BONDING
- 877001-04 STEEL MAST ARM ASSEMBLY AND POLE 16" THROUGH 55'
- 877006-03 STEEL MAST ARM ASSEMBLY AND POLE WITH DUAL MAST ARMS
- 878001-07 CONCRETE FOUNDATION DETAILS
- 880006-01 TRAFFIC SIGNAL MOUNTING DETAILS
- 886001-01 DETECTOR LOOP INSTALLATIONS
- 886006-01 TYPICAL LAYOUT FOR DETECTION LOOPS

# STATE OF ILLINOIS

## DEPARTMENT OF TRANSPORTATION

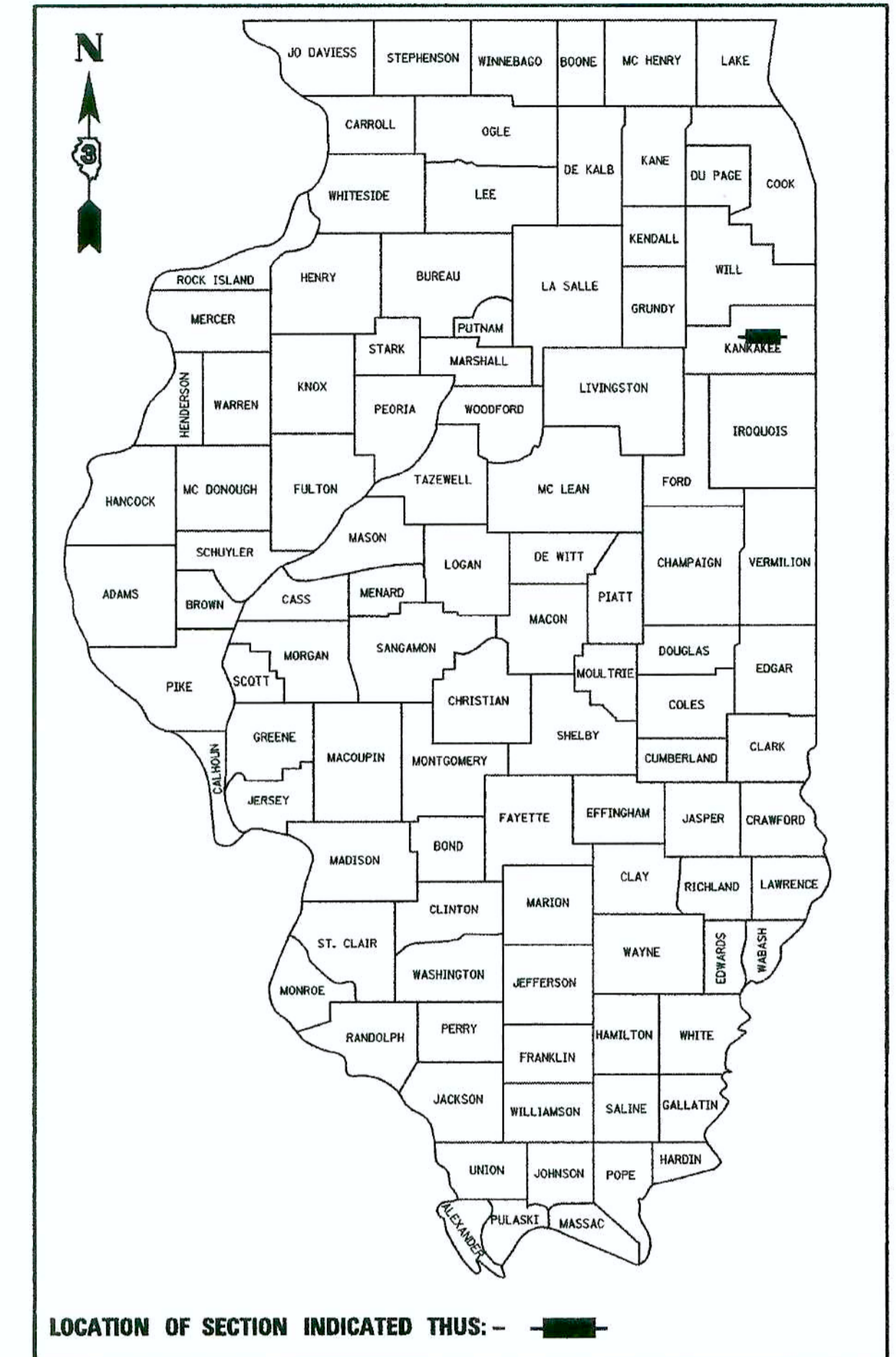
### DIVISION OF HIGHWAYS

# PLANS FOR PROPOSED FEDERAL AID HIGHWAY

## FAU ROUTE 6176 (ARMOUR ROAD) SECTION (79)W&RS & 140RS PROJECT E SP-6176(002) KANKAKEE COUNTY

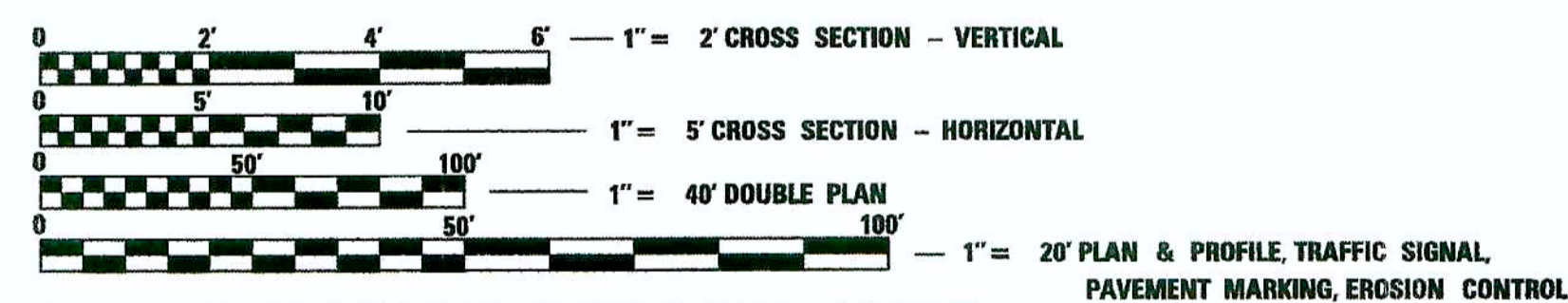
**C - 93 - 066 - 05**

THE PROJECT CONSISTS OF WIDENING AND RESURFACING FAU 6176 (ARMOUR ROAD) FROM US 45/52 TO EAST OF MOONEY DRIVE AND RESURFACING ONLY FROM EAST OF MOONEY DRIVE TO ILL. RTE. 50 EXCEPT ACROSS SN 046-0063. THROUGHOUT THE LENGTH TO BE WIDENED, NEW STORM SEWER WILL BE CONSTRUCTED TO SUPPLEMENT THE EXISTING. GUARD RAIL WILL BE REMOVED AND REPLACED AT THE APPROACHES TO SN 046-0063 TO CONFORM TO DEPARTMENT POLICY. WORK WILL ALSO INCLUDE EXTENSION OF THE 8' X 5' BOX CULVERT UNDER ARMOUR ROAD NEAR COUNTRY COURT, AND TRAFFIC SIGNAL REPLACEMENT AND MODIFICATION.



FAU ROUTE 6176 (ARMOUR ROAD)  
 FUNCTIONAL CLASSIFICATION: URBAN MINOR ARTERIAL

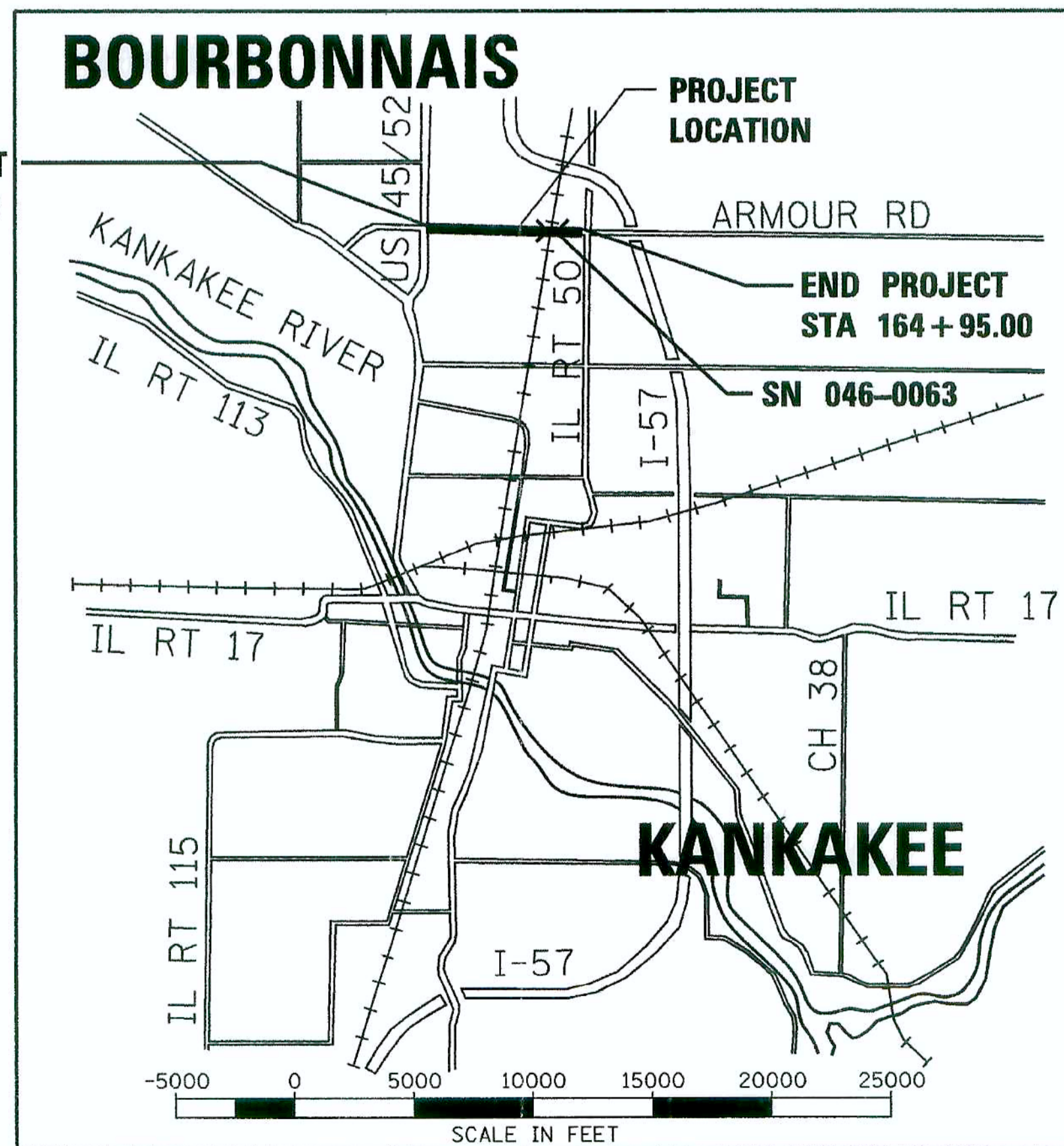
ADT = 22400 (2005)  
 PV = 95.1%  
 MV = 1.4%  
 SV = 3.5%



FULL SIZE PLANS HAVE BEEN PREPARED USING STANDARD ENGINEERING SCALES. REDUCED SIZED PLANS WILL NOT CONFORM TO STANDARD SCALES. IN MAKING MEASUREMENTS ON REDUCED PLANS, THE ABOVE SCALES MAY BE USED.

J.U.L.I.E.  
 JOINT UTILITY LOCATION INFORMATION FOR EXCAVATION  
 1-800-892-0123

**BEGIN PROJECT  
 STA 100 + 31.08**



**GROSS LENGTH = 6463.92 FT. = 1.224 MI.  
 NET LENGTH = 6463.92 FT. = 1.224 MI.**

2/9/09 date  
 JAMES K. CLINARD  
 LICENSED PROFESSIONAL ENGINEER  
 NO. 062-041793  
 STATE OF ILLINOIS  
 expires 11-30-2009  
 signature  
 PROFESSIONAL DESIGN FIRM  
 LICENSE NO. 184-001717  
 CHAMLIN & ASSOCIATES

STATE OF ILLINOIS  
 DEPARTMENT OF TRANSPORTATION  
 DIVISION OF HIGHWAYS

SUBMITTED 02-13 20 09  
George F. Ryan DEPUTY DIRECTOR OF HIGHWAYS, REGION ENGINEER  
March 27, 20 09  
Charles J. Ingersoll ENGINEER OF DESIGN AND ENVIRONMENT  
March 27, 20 09  
Christine M. Reed DIRECTOR OF HIGHWAYS, CHIEF ENGINEER

**PRINTED BY THE AUTHORITY  
 OF THE STATE OF ILLINOIS**

DISTRICT 3 NO. (815) 434-6131

PROJECT ENGINEER: JOE KANNEL  
 UNIT CHIEF: MICHELE LINDEMANN  
 TOWNSHIP: BOURBONNAIS

CONTRACT NO. 66560

MICROFILMED \_\_\_\_\_  
 REEL NUMBER \_\_\_\_\_  
 AWARDED \_\_\_\_\_  
 RESIDENT ENGINEER \_\_\_\_\_  
 AS BUILT CHANGES WERE MADE  
 ON THE FOLLOWING SHEETS \_\_\_\_\_

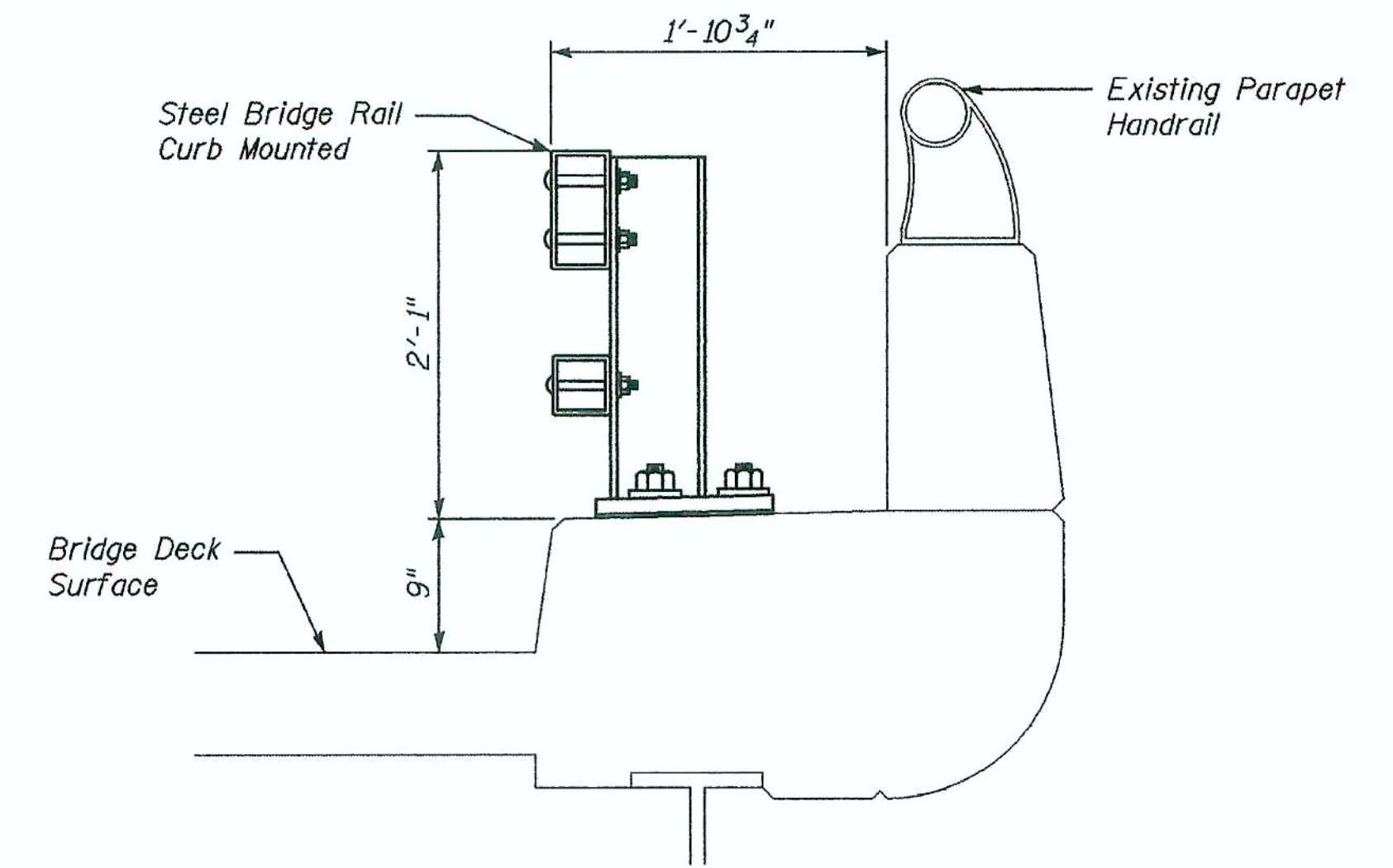
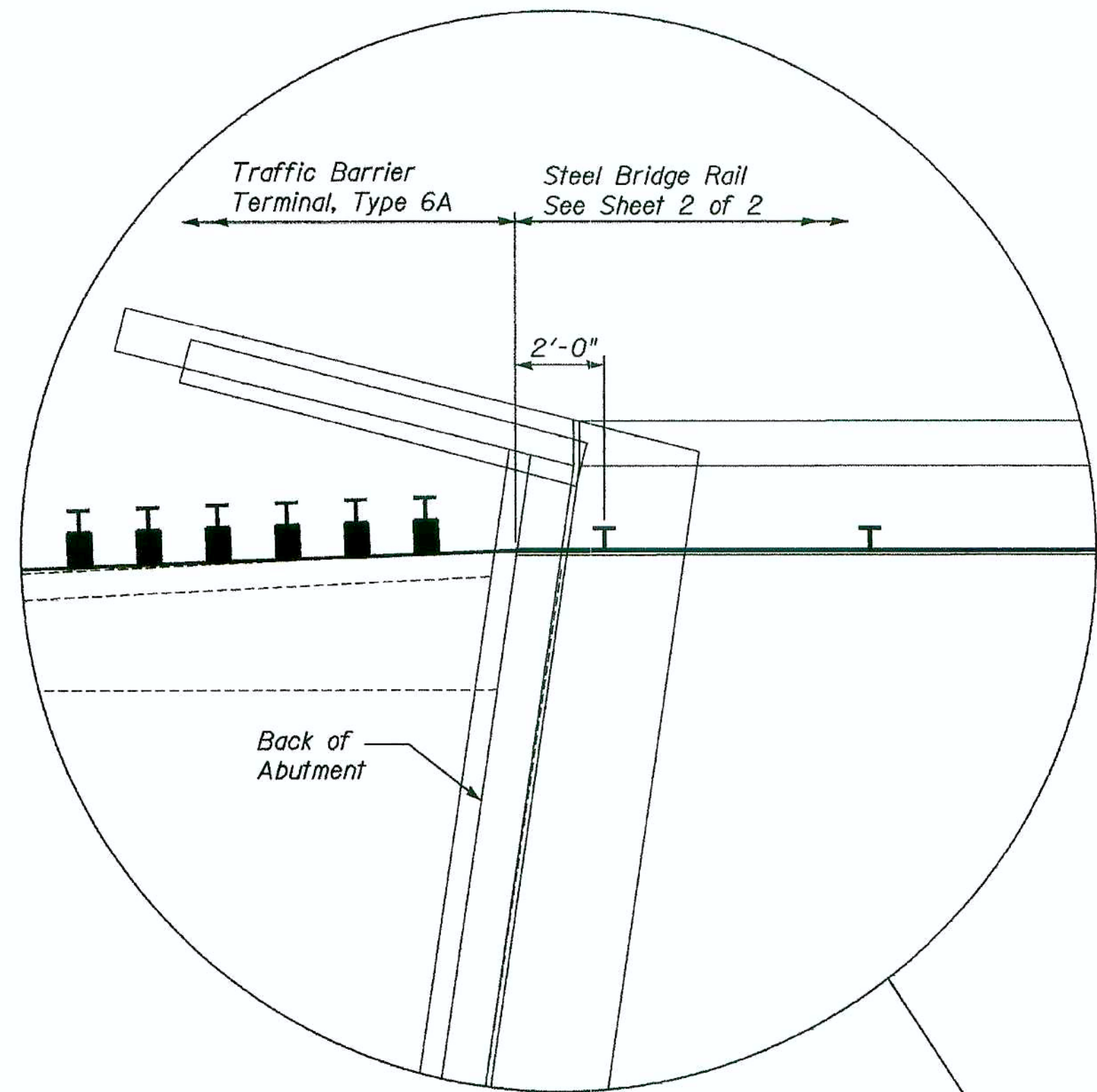
DATE - 12/06  
 Z04305CVR.DGN



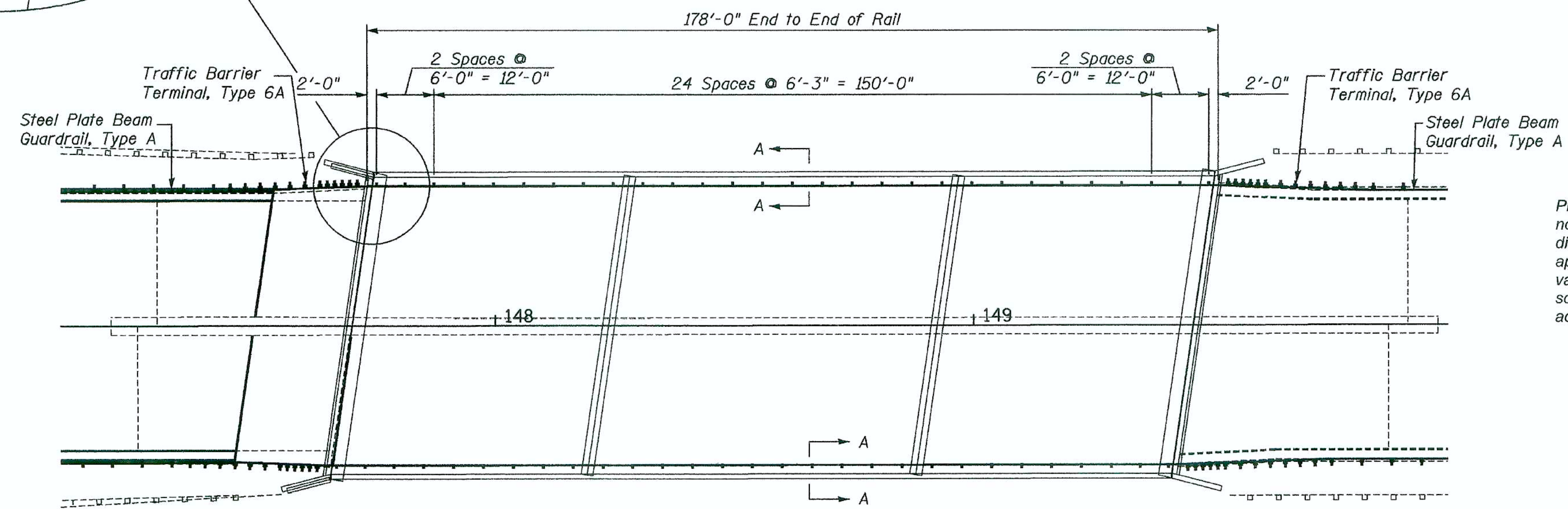
STATE OF ILLINOIS  
DEPARTMENT OF TRANSPORTATION

ROUTE NO.	SECTION	COUNTY	TOTAL SHEETS	SHEET NO.	SHEET NO. 1 2 SHEETS
F.A.U. 6176	(79) W&RS & 14ORS	KANKAKEE	109	66	
FED. ROAD DIST. NO. 7	ILLINOIS	FED. AID PROJECT-			

Contract # 66560



SECTION A-A



Plan dimensions and details relative to existing plans are subject to nominal construction variations. The Contractor shall field verify existing dimensions and details affecting new construction and make necessary approved adjustments prior to construction or ordering of materials. Such variations shall not be cause for additional compensation for a change in scope of the work, however, the Contractor will be paid for the quantity actually furnished based at the unit price bid for the work.

PLAN

Note: Rail post spacing for south curb similar



DESIGNED	JKC
CHECKED	JDA
DRAWN	ARR
CHECKED	JKC

3/10/07  
date

JAMES K. CLINARD  
LICENSED STRUCTURAL ENGINEER  
NO. 081-004655  
STATE OF ILLINOIS  
expires 11-30-2010

*[Signature]*  
signature

PROFESSIONAL DESIGN FIRM  
LICENSE NO. 184-001717

BRIDGE RAIL DETAILS  
SN 046-0063  
SECTION (79)W&RS & 14ORS  
KANKAKEE COUNTY

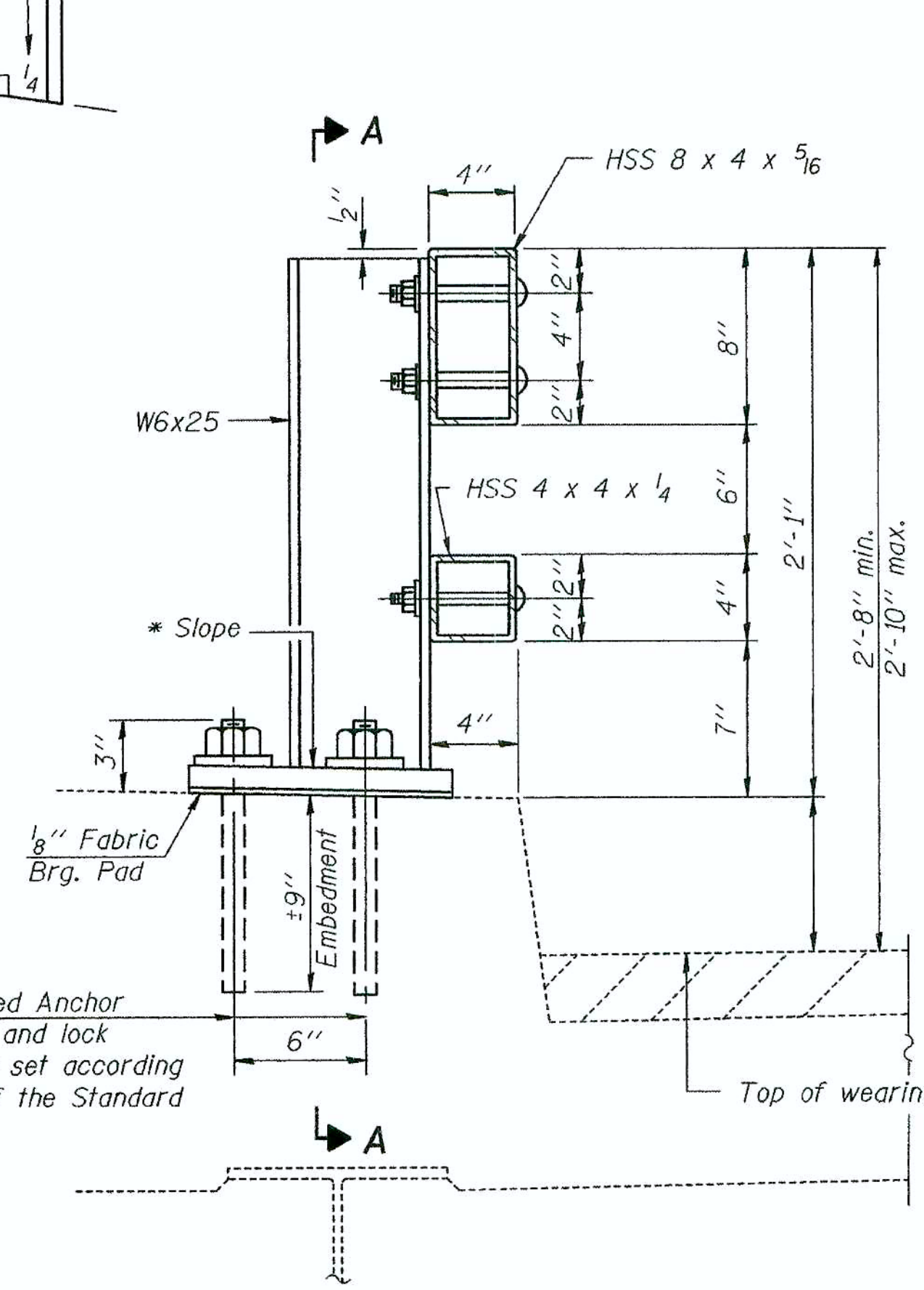


STATE OF ILLINOIS  
DEPARTMENT OF TRANSPORTATION

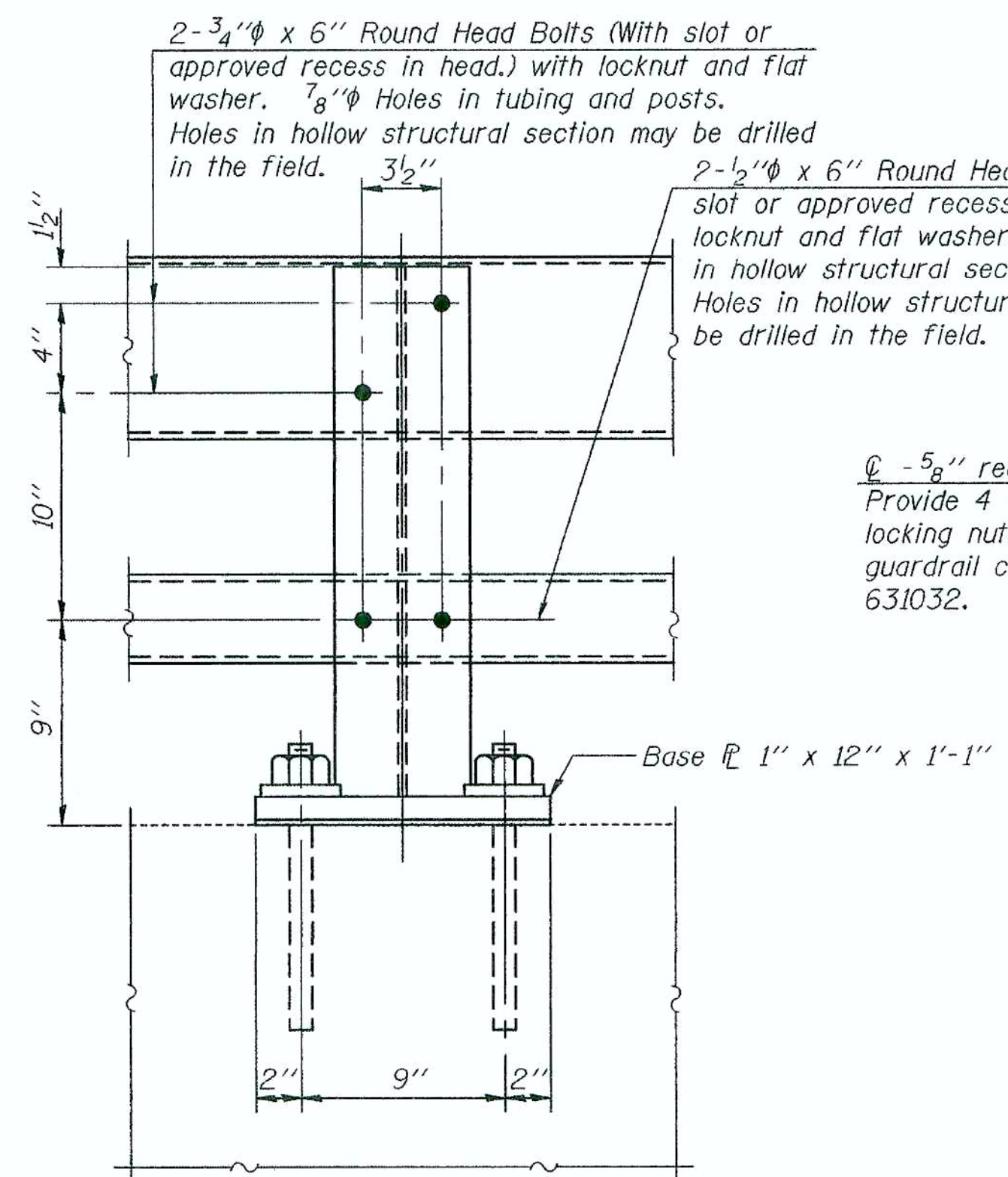
ROUTE NO.	SECTION	COUNTY	SUBS	SHEET	SHEET NO. 2 2 SHEETS
FAU 6176	(79) W&RS & 140RS	KANKAKEE	109	67	
FED. ROAD DIST. NO. 7		ILLINOIS	FED. AID PROJECT-		

Contract # 66560

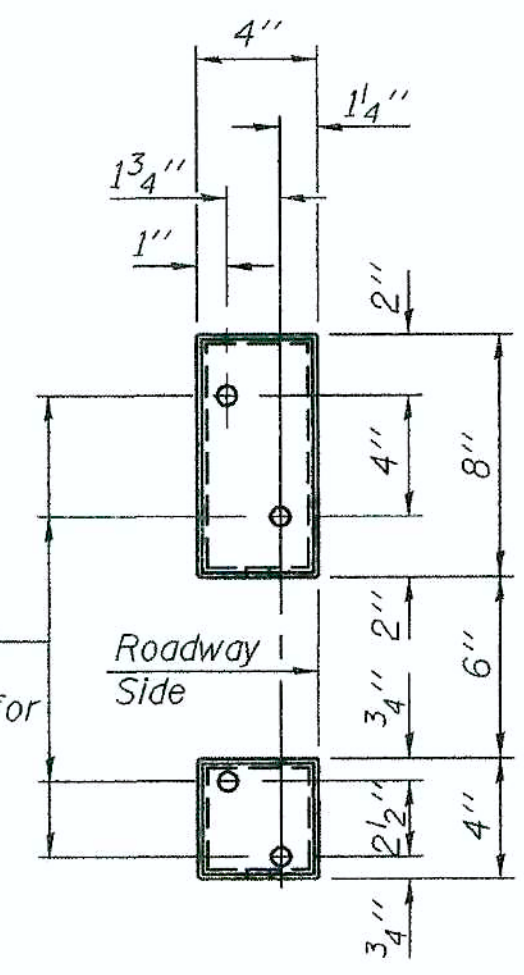
\* Cut bottom end of post to curb slope.



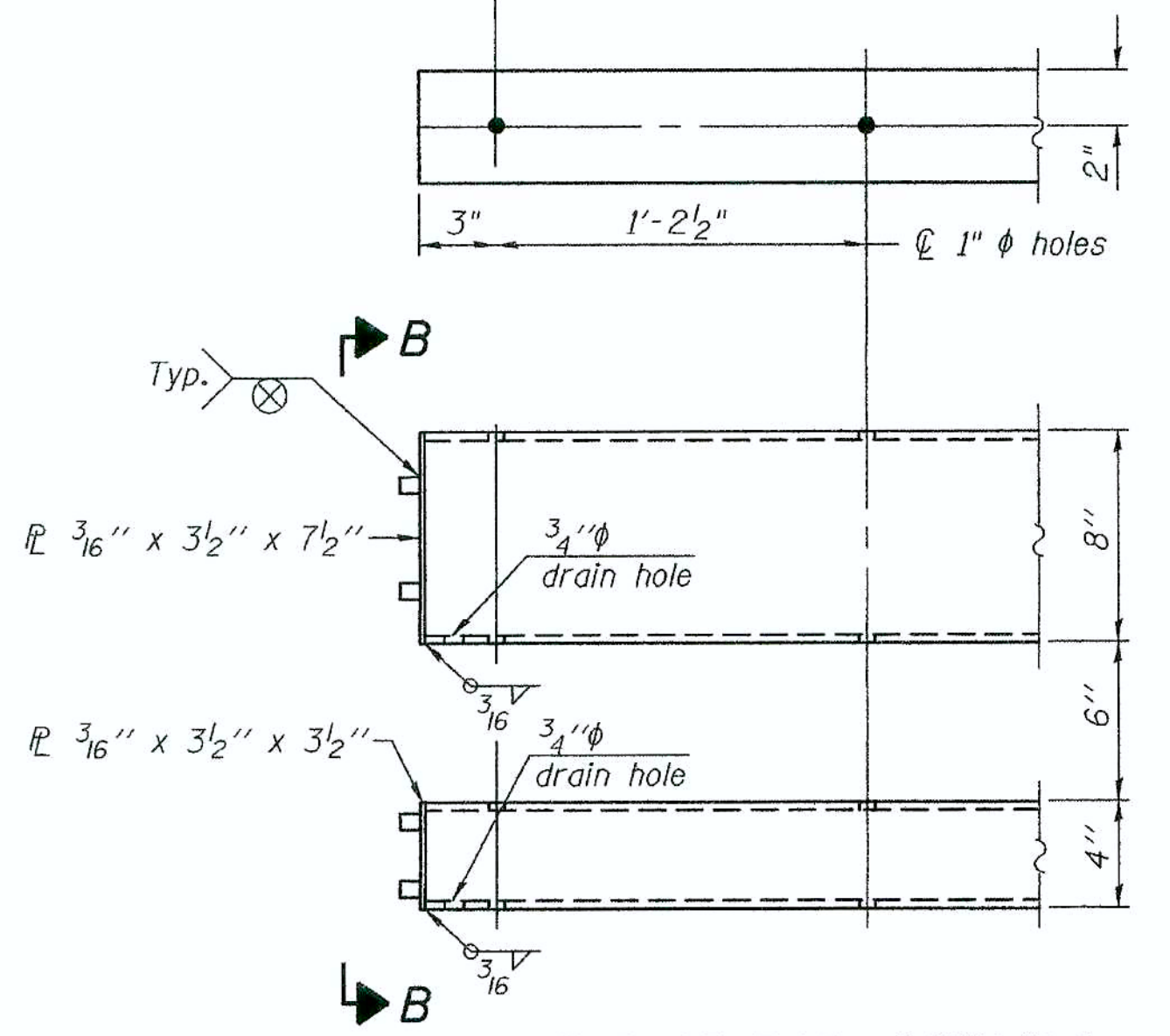
SECTION AT RAIL POST



SECTION A-A



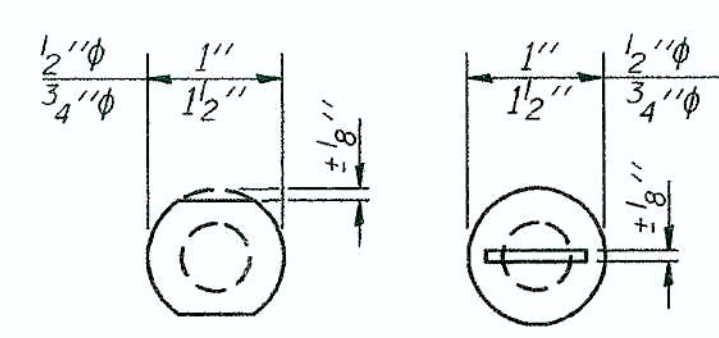
VIEW B-B



END OF RAIL DETAILS

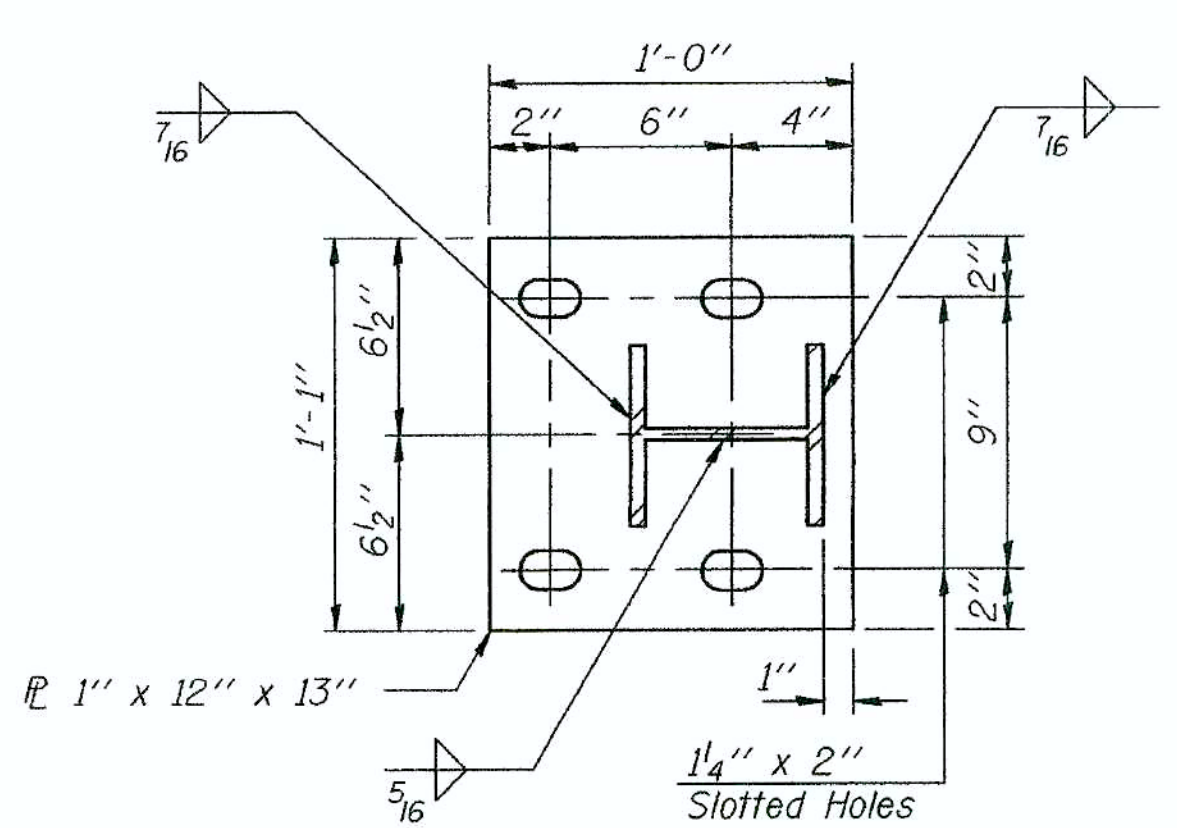
4- 1"  $\phi$  H.S. Threaded Anchor Rods with hex nuts and lock washers, drilled and set according to Article 509.06 of the Standard Specifications.

$\phi$  - 5/8" reduced base welded studs. Provide 4 - 5/8" washers and self-locking nuts or nuts and jam nuts for guardrail connection shown on Std. 631032.

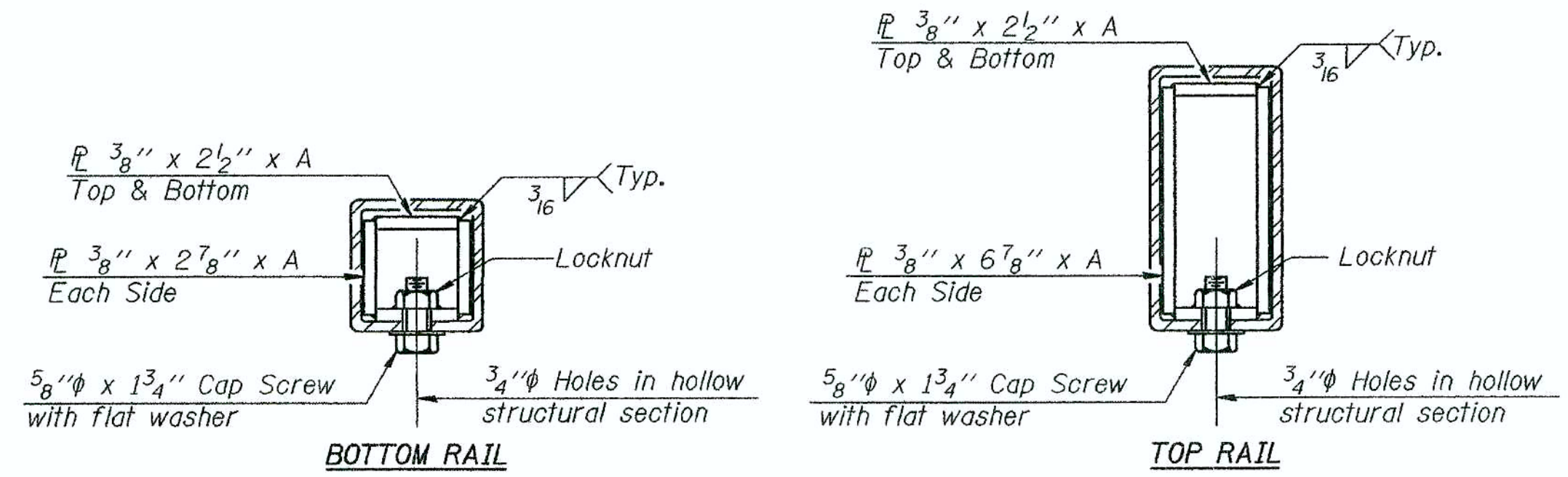


VIEW C-C

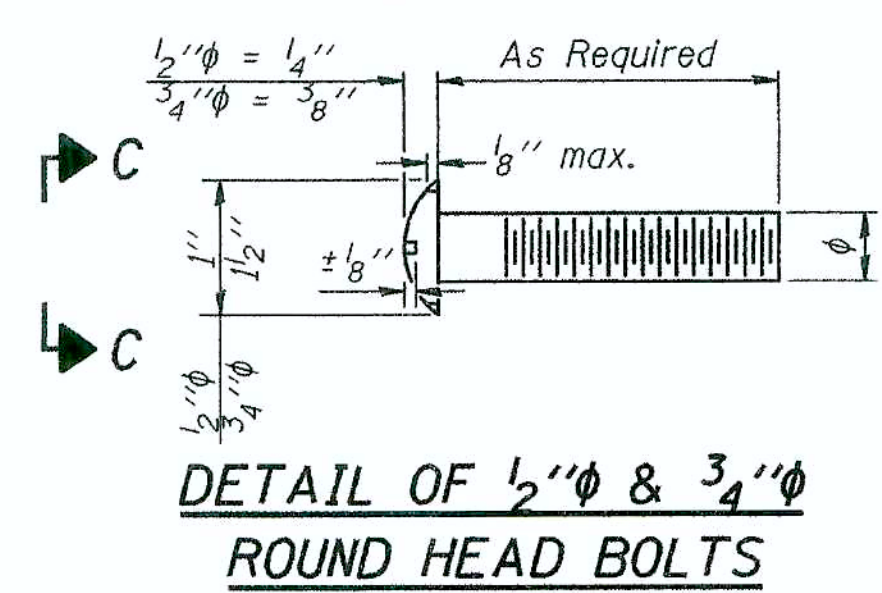
Notes:  
All field drilled holes shall be coated with an approved zinc rich paint before erection.  
Posts shall not be located closer than 1'-3" to an existing bridge expansion joint or end of bridge.  
Steel Bridge Rail expansion joint shall be provided between any two (2) posts which span a bridge expansion joint. Bolts located at expansion joint shall be provided with locknuts and shall be tightened only to a point that will allow railing movement.  
Provide one 1/8" and two 1/16" steel shims for 25% of the posts. Shims shall be similar to base plates in size and holes.  
All steel rail elements shall be galvanized according to Article 509.05 of the Standard Specifications.



BASE PLATE DETAIL



SECTIONS AT RAIL SPLICE



DETAIL OF 1/2"  $\phi$  & 3/4"  $\phi$  ROUND HEAD BOLTS

**SPLICE DIMENSIONS**

T	D	A	B	C	E
$\leq 4"$	2 1/2"	1'-8"	2"	4"	2 1/2"
$> 4" \leq 6 1/2"$	3 3/4"	2'-0"	2 1/2"	5 1/2"	3 1/2"
$> 6 1/2" \leq 9"$	5"	2'-4"	3 1/2"	6 1/2"	9"
$> 9" \leq 13"$	7"	2'-10"	4 1/2"	8 1/2"	11"
Rail Splice	1/4"	1'-8"	2"	4"	—

T = Total movement at expansion joint as shown on the design plans.

**BILL OF MATERIAL**

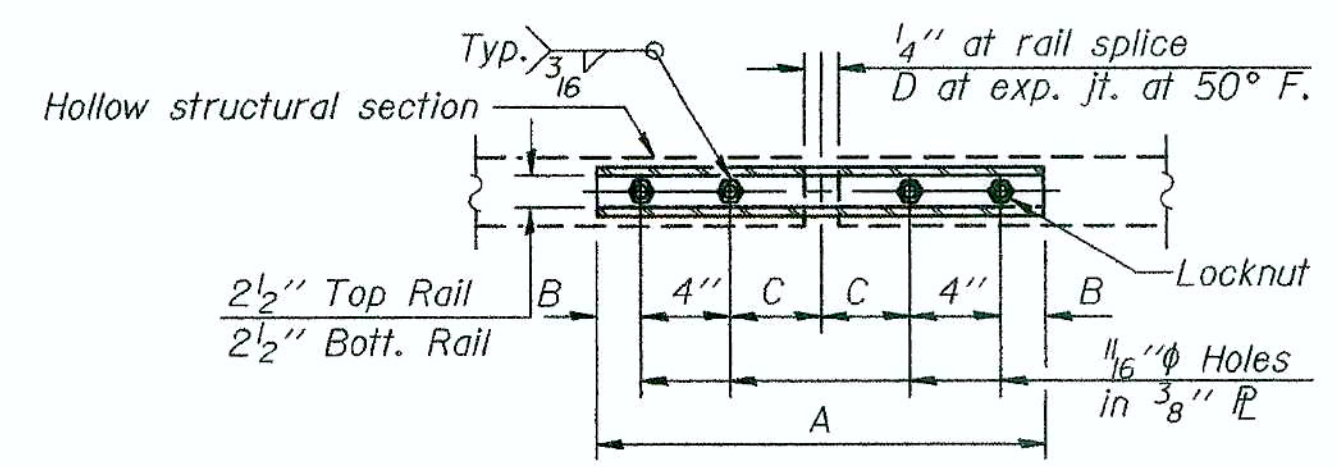
Item	Unit	Quantity
Steel Railing, Type 2399	Foot	356

**STEEL RAILING, TYPE 2399  
STRUCTURE NO. 046-0063**

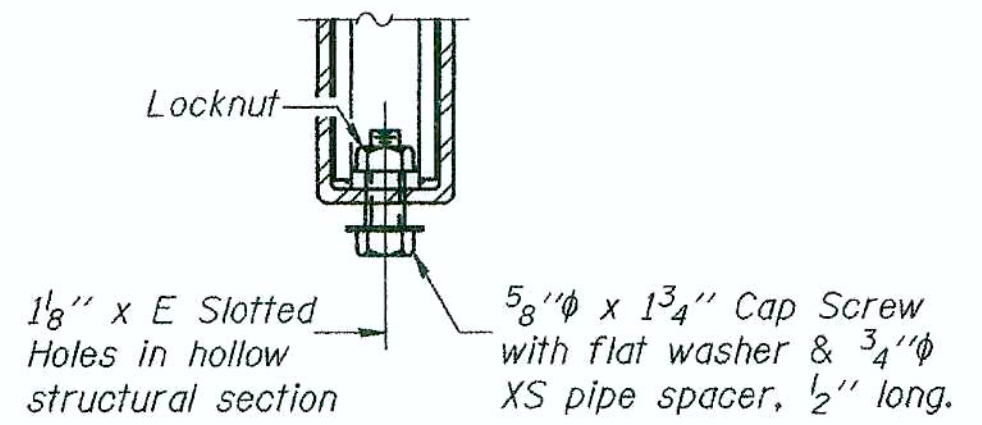
DESIGNED
CHECKED
DRAWN
CHECKED

R-31 10-1-08

(6'-3" Maximum Post Spacing)



PLAN-BOTT. SPLICE TYPICAL



RAIL SPLICE CONNECTION AT EXPANSION JT.