

**GENERAL NOTES:**

PLAN DIMENSIONS AND DETAILS RELATIVE TO EXISTING PLANS ARE SUBJECT TO NOMINAL CONSTRUCTION VARIATIONS. THE CONTRACTOR SHALL FIELD VERIFY EXISTING DIMENSIONS AND DETAILS AFFECTING NEW CONSTRUCTION AND MAKE NECESSARY APPROVED ADJUSTMENTS PRIOR TO CONSTRUCTION OR ORDERING OF MATERIALS. SUCH VARIATIONS SHALL NOT BE CAUSE FOR ADDITIONAL COMPENSATION FOR A CHANGE IN SCOPE OF THE WORK, HOWEVER, THE CONTRACTOR WILL BE PAID FOR THE QUANTITY ACTUALLY FURNISHED BASED AT THE UNIT PRICE BID FOR THE WORK.

REINFORCEMENT BARS DESIGNATED (E) SHALL BE EPDXY COATED.

IF THE ANALYSIS SUBMITTED TO THE CONTRACTOR FOR THE JACKING/TEMPORARY SUPPORT SYSTEM TO BE USED SHOWS TEMPORARY STIFFENERS ARE REQUIRED TO PREVENT WEB CRIPPLING OR BUCKING, THE STIFFENERS SHALL BE STEEL AND BOLTED TO THE WEB, IF STIFFENERS ARE NOT REQUIRED, HARDWOOD TIMBERS SHALL BE INSTALLED TIGHTLY BETWEEN THE TOP AND BOTTOM FLANGE TO PREVENT FLANGE ROTATION.

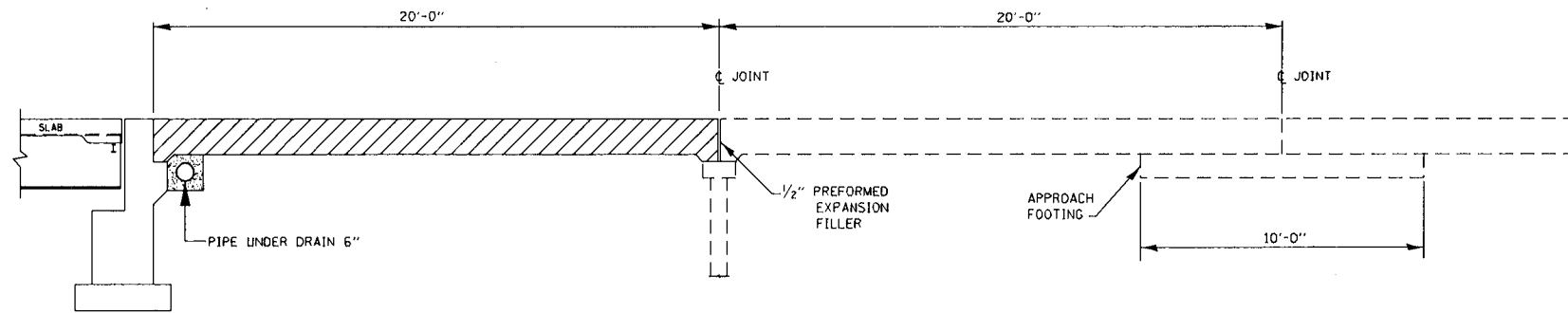
THE EXISTING STRUCTURAL STEEL COATING CONTAINS LEAD. THE CONTRACTOR SHALL TAKE APPROPRIATE PRECAUTIONS TO DEAL WITH THE PRESENCE OF LEAD ON THIS PROJECT.

\*PIPE UNDER DRAIN TO DRAIN AT A 5% SLOPE.

THE EXISTING STRUCTURAL STEEL COATING CONTAINS LEAD. THE CONTRACTOR SHALL TAKE APPROPRIATE PRECAUTIONS TO DEAL WITH THE PRESENCE OF LEAD ON THIS PROJECT.

EXISTING STRUCTURAL STEEL THAT WILL BE IN CONTACT WITH NEW STRUCTURAL STEEL SHALL BE CLEANED AND PAINTED PRIOR TO ERECTION AS REQUIRED BY THE SPECIAL PROVISION "CLEANING AND PAINTING CONTRACT SURFACE AREAS OF EXISTING STEEL STRUCTURES".

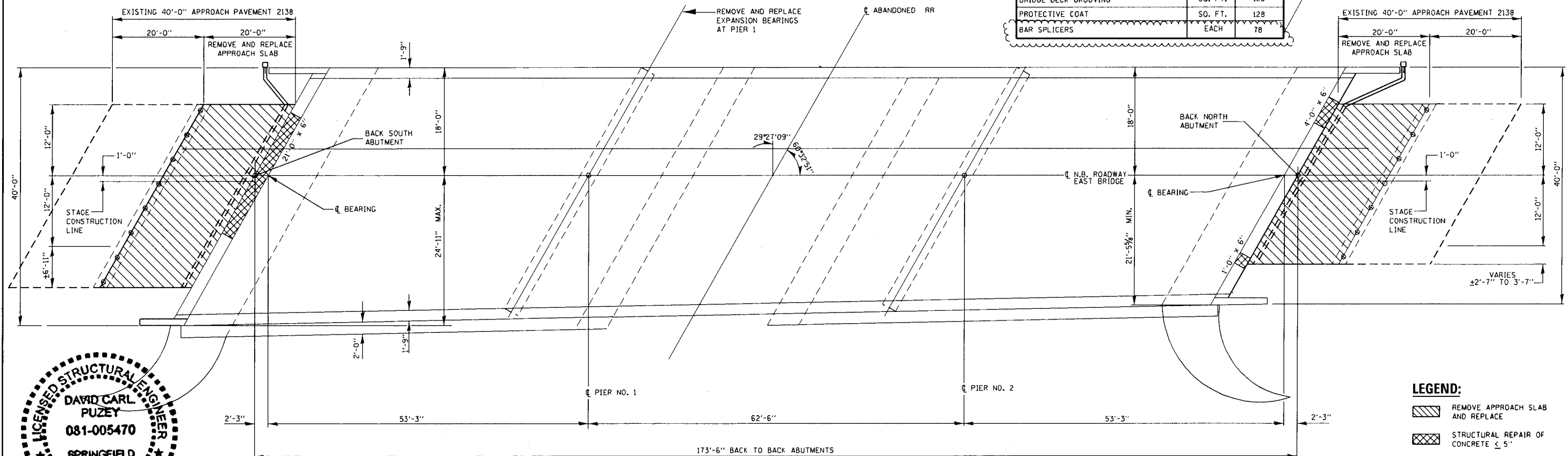
ALL STRUCTURAL STEEL SHALL BE SHOP PAINTED WITH THE INORGANIC ZINC RICH PRIMER PER AASHTO, TYPE 1. COST INCLUDED WITH FURNISHING AND ERECTING STRUCTURAL STEEL.



**TYPICAL APPROACH SLAB DETAIL**

**TOTAL BILL OF MATERIALS**

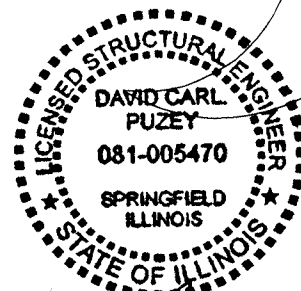
ITEM	UNIT	TOTAL
STRUCTURAL REPAIR OF CONCRETE $\leq$ 5"	SO. FT.	13
ELASTOMERIC BEARING ASSEMBLY, TYPE 1	EACH	7
FURNISHING AND ERECTING STRUCTURAL STEEL	POUND	1335
JACK AND REMOVE BEARING	EACH	7
ANCHOR BOLT, 1" $\phi$	EACH	14
APPROACH SLAB REMOVAL AND REPLACEMENT	SO.YD.	125
*PIPE UNDERDRAIN 6"	FOOT	88
CONCRETE HEADWALL FOR PIPE DRAIN	EACH	2
BRIDGE DECK GROOVING	SO. FT.	128
PROTECTIVE COAT	SO. FT.	128
BAR SPLICERS	EACH	78



**PLAN  
S.N. 099-0038**

**FOR EXISTING APPROACH STANDARD  
2138 SEE SHEETS 7 OF 7**

REVISOR  $\Delta$  8/31/15



*David Carl Puze* 9/2/15  
Expires 11/30/16

**LEGEND:**

- REMOVE APPROACH SLAB AND REPLACE
- STRUCTURAL REPAIR OF CONCRETE  $\leq$  5"

FILE NAME =	USER NAME = midje	DESIGNED - MVT	REVISED -	<p align="center"><b>STATE OF ILLINOIS DEPARTMENT OF TRANSPORTATION</b></p>	<p align="center"><b>I-57 OVER ABANDONED RAILROAD CROSS SECTION, PLAN AND APPROACH SLABS SN. 099-0038 (NB)</b></p>	F.A.I. RTE.	SECTION	COUNTY	TOTAL SHEETS	SHEET NO.	
Default	PLOT SCALE = 1/80,000	CHECKED - RTB	REVISED -			57	99-2VB-1-2	WILL	21	5	
	PLOT DATE = 9/1/2015	DATE -	REVISED -			CONTRACT NO. 62A45					
						ILLINOIS FED. AID PROJECT					