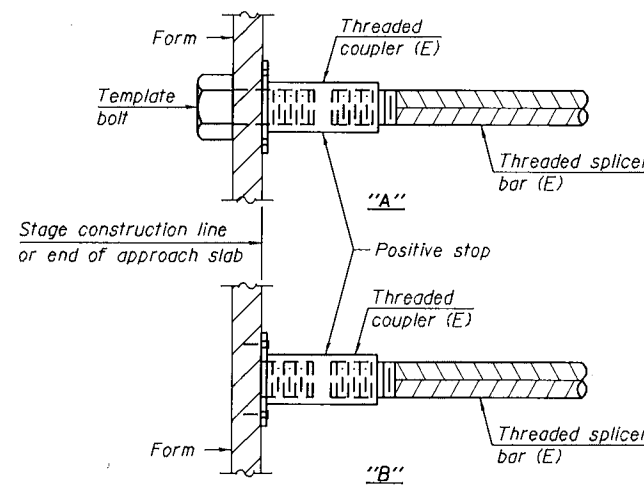


**STANDARD BAR SPLICER ASSEMBLY**

Threaded splicer bar length = min. lap length + 1/2" + thread length

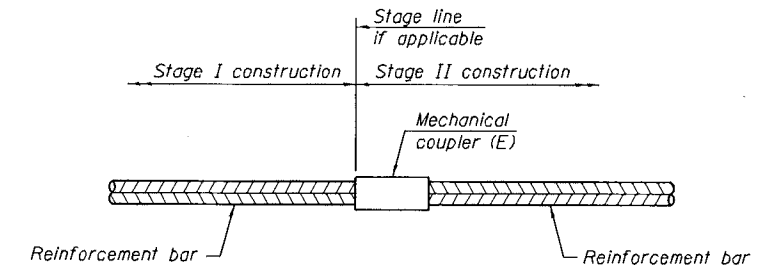
\* Epoxy not required on Bar Splicer Assembly components used in conjunction with black bars.

Location	Bar size	No. assemblies required	Minimum lap length
Approach Slab	#5	66	3'-0"
Approach Slab	#4	12	2'-5"



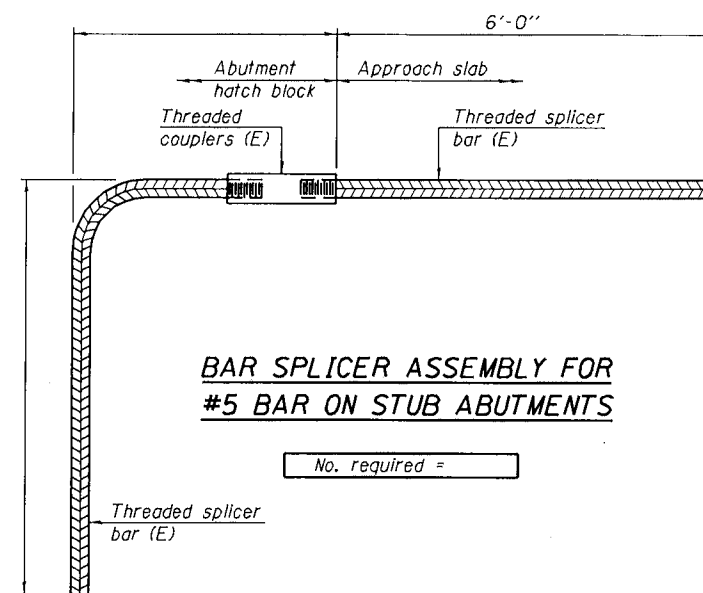
**INSTALLATION AND SETTING METHODS**

"A" : Set bar splicer assembly by means of a template bolt.  
 "B" : Set bar splicer assembly by nailing to wood forms or cementing to steel forms.  
 (E) : Indicates epoxy coating.



**STANDARD MECHANICAL SPLICER**

Location	Bar size	No. assemblies required



**BAR SPLICER ASSEMBLY FOR #5 BAR ON STUB ABUTMENTS**

No. required =

**NOTES**

Splicer bars shall be deformed with threaded ends and have a minimum 60 ksi yield strength.  
 All reinforcement shall be lapped and tied to the splicer bars.  
 Bar splicer assemblies shall be epoxy coated according to the requirements for reinforcement bars. See Section 508 of the Standard Specifications.  
 See approved list of bar splicer assemblies and mechanical splicers for alternatives.

1 REVISED 8/31/15 AM

BSD-1

6-8-15

FILE NAME =	USER NAME = mdyja	DESIGNED - MVT	REVISED -
p:\11\084EB(DINTEG)\Illinois.gov\FWIDOT\Documents\DOT Offices\District 1\Projects\Struc\OR\090\090\Design\0909-0038.dgn		CHECKED - RTB	REVISED -
		DATE	REVISED -

STATE OF ILLINOIS  
 DEPARTMENT OF TRANSPORTATION

I-57 OVER ABANDONED RAILROAD  
 NORTH AND SOUTH APPROACH SLAB  
 SN. 099-0038 (NB)

SCALE:	SHEET NO. 6 OF 7 SHEETS	STA.	TO STA.	F.A.I. RTE. 57	SECTION 99-2VB-1-2	COUNTY WILL	TOTAL SHEETS 21	SHEET NO. 9
								CONTRACT NO. 62A45
ILLINOIS FED. AID PROJECT								