

SUMMARY OF QUANTITIES			CONSTRUCTION TYPE CODE 0014					
CODE NO	ITEM	UNIT	TOTAL QUANTITIES	0014				
40603340	HOT-MIX ASPHALT SURFACE COURSE, MIX "D", N70	TON	13	13				
44000157	HOT-MIX ASPHALT SURFACE REMOVAL, 2"	SQ YD	112	112				
50300260	BRIDGE DECK GROOVING	SQ YD	128	128				
50500405	FURNISHING AND ERECTING STRUCTURAL STEEL	POUND	1335	1335				
50300300	PROTECTIVE COAT	SQ YD	128	128				
52100010	ELASTOMERIC BEARING ASSEMBLY, TYPE I	EACH	7	7				
52100520	ANCHOR BOLTS, 1"	EACH	14	14				
50800515	BAR SPLICERS	EACH	78	78				
60100060	CONCRETE HEADWALLS FOR PIPE DRAINS	EACH	2	2				
60107700	PIPE UNDERDRAINS 6"	FOOT	88	88				
64200116	SHOULDER RUMBLE STRIPS, 16 INCH	FOOT	500	500				
67000400	ENGINEER'S FIELD OFFICE, TYPE A	CAL MO	3	3				
70106800	CHANGEABLE MESSAGE SIGN	CAL MO	0.5	0.5				
67100100	MOBILIZATION	LSUM	1	1				
70301000	WORK ZONE PAVEMENT MARKING REMOVAL	SQ FT	1746	1746				
70400100	TEMPORARY CONCRETE BARRIER	FOOT	462.5	462.5				
70400200	RELOCATE TEMPORARY CONCRETE BARRIER	FOOT	387.5	387.5				
70600250	IMPACT ATTENUATORS, TEMPORARY (NON-REDIRECTIVE), TEST LEVEL 3	EACH	1	1				
70600350	IMPACT ATTENUATORS, RELOCATE (NON-REDIRECTIVE), TEST LEVEL 3	EACH	1	1				

SUMMARY OF QUANTITIES			CONSTRUCTION TYPE CODE					
CODE NO	ITEM	UNIT	TOTAL QUANTITIES					
* 78000200	THERMOPLASTIC PAVEMENT MARKING - LINE 4"	FOOT	910	910				
* 78004220	PREFORMED PLASTIC PAVEMENT MARKING, TYPE B - INLAID - LINE 5"	FOOT	620	620				
* 78003120	PREFORMED PLASTIC PAVEMENT MARKING, TYPE B - LINE 5"	FOOT	620	620				
* 78008210	POLYUREA PAVEMENT MARKING TYPE I - LINE 4"	FOOT	510	510				
78100300	REPLACEMENT REFLECTOR	EACH	110	110				
* 78008220	POLYUREA PAVEMENT MARKING TYPE I - LINE 5"	FOOT	90	90				
78200530	BARRIER WALL MARKERS, TYPE C	EACH	152	152				
78300100	PAVEMENT MARKING REMOVAL	SO FT	880	880				
X7010237	CHANGEABLE MESSAGE SIGN, SPECIAL	CAL DA	50	50				
X7011015	TRAFFIC CONTROL AND PROTECTION (EXPRESSWAYS)	LSUM	1	1				
X7030030	WET REFLECTIVE TEMPORARY TAPE TYPE III, 4 INCH	FOOT	5237	5237				
X8570000	SMART TRAFFIC MONITORING SYSTEM	LSUM	1	1				
X8570001	SMART TRAFFIC MONITORING SYSTEM	CAL DA	50	50				
Z0001500	APPROACH SLAB REMOVAL & REPLACEMENT	SO YD	125	125				
Z0001899	JACK AND REMOVE EXISTING BEARINGS	EACH	7	7				
Z0012754	STRUCTURAL REPAIR OF CONCRETE (DEPTH EQUAL TO OR LESS THAN 5 (INCHES))	SO FT	13	13				
	* SPECIALTY ITEMS							

FILE NAME =	USER NAME = mdyjo	DESIGNED -	REVISED -
OFFICE = District 1 Projects	PROJECTS = D19515	CADWORK = Design	D19515
PLOT SCALE = 1/8" = 1'	CHECKED -	REVISED -	REVISED -
PLOT DATE = 7/20/2015	DATE -	REVISED -	REVISED -

**STATE OF ILLINOIS
DEPARTMENT OF TRANSPORTATION**

SUMMARY OF QUANTITIES			
SCALE:	SHEET NO. OF SHEETS	STA. TO STA.	

F.A. RTE. 57	SECTION 99-2VB-1-2	COUNTY WILL	TOTAL SHEETS 21	SHEET NO. 3
FED. ROAD DIST. NO. 1 ILLINOIS FED. AID PROJECT				

REVISD 9-2-15

GENERAL NOTES:

PLAN DIMENSIONS AND DETAILS RELATIVE TO EXISTING PLANS ARE SUBJECT TO NOMINAL CONSTRUCTION VARIATIONS. THE CONTRACTOR SHALL FIELD VERIFY EXISTING DIMENSIONS AND DETAILS AFFECTING NEW CONSTRUCTION AND MAKE NECESSARY APPROVED ADJUSTMENTS PRIOR TO CONSTRUCTION OR ORDERING OF MATERIALS. SUCH VARIATIONS SHALL NOT BE CAUSE FOR ADDITIONAL COMPENSATION FOR A CHANGE IN SCOPE OF THE WORK, HOWEVER, THE CONTRACTOR WILL BE PAID FOR THE QUANTITY ACTUALLY FURNISHED BASED AT THE UNIT PRICE BID FOR THE WORK.

REINFORCEMENT BARS DESIGNATED (E) SHALL BE EPDXY COATED.

IF THE ANALYSIS SUBMITTED TO THE CONTRACTOR FOR THE JACKING/TEMPORARY SUPPORT SYSTEM TO BE USED SHOWS TEMPORARY STIFFENERS ARE REQUIRED TO PREVENT WEB CRIPPLING OR BUCKING, THE STIFFENERS SHALL BE STEEL AND BOLTED TO THE WEB, IF STIFFENERS ARE NOT REQUIRED, HARDWOOD TIMBERS SHALL BE INSTALLED TIGHTLY BETWEEN THE TOP AND BOTTOM FLANGE TO PREVENT FLANGE ROTATION.

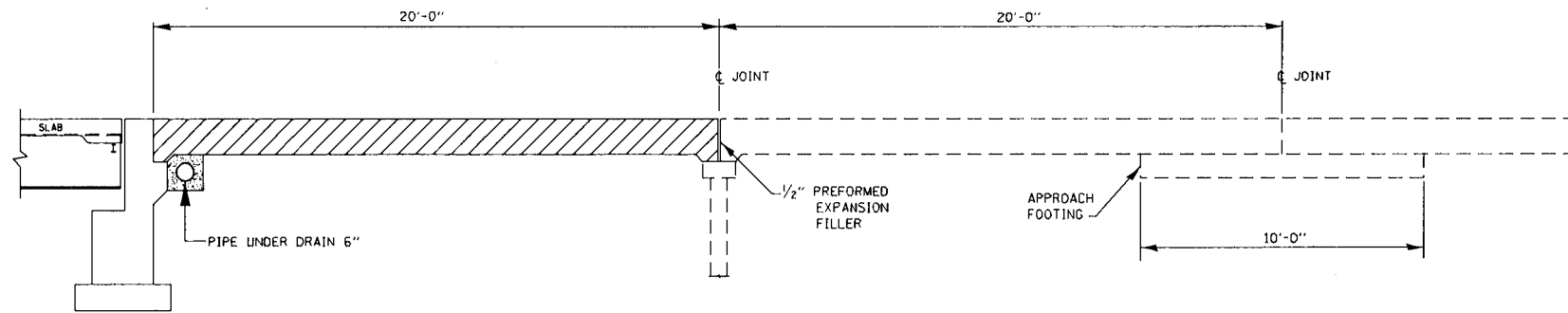
THE EXISTING STRUCTURAL STEEL COATING CONTAINS LEAD. THE CONTRACTOR SHALL TAKE APPROPRIATE PRECAUTIONS TO DEAL WITH THE PRESENCE OF LEAD ON THIS PROJECT.

*PIPE UNDER DRAIN TO DRAIN AT A 5% SLOPE.

THE EXISTING STRUCTURAL STEEL COATING CONTAINS LEAD. THE CONTRACTOR SHALL TAKE APPROPRIATE PRECAUTIONS TO DEAL WITH THE PRESENCE OF LEAD ON THIS PROJECT.

EXISTING STRUCTURAL STEEL THAT WILL BE IN CONTACT WITH NEW STRUCTURAL STEEL SHALL BE CLEANED AND PAINTED PRIOR TO ERECTION AS REQUIRED BY THE SPECIAL PROVISION "CLEANING AND PAINTING CONTRACT SURFACE AREAS OF EXISTING STEEL STRUCTURES".

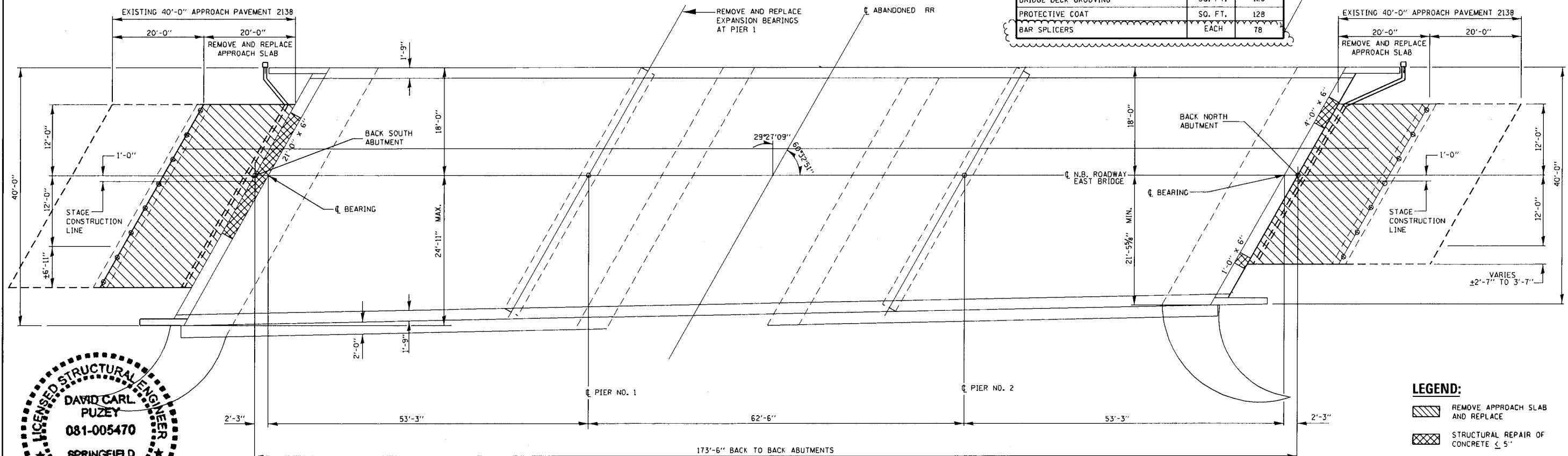
ALL STRUCTURAL STEEL SHALL BE SHOP PAINTED WITH THE INORGANIC ZINC RICH PRIMER PER AASHTO, TYPE 1. COST INCLUDED WITH FURNISHING AND ERECTING STRUCTURAL STEEL.



TYPICAL APPROACH SLAB DETAIL

TOTAL BILL OF MATERIALS

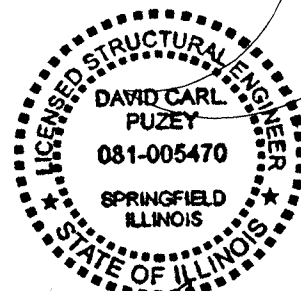
ITEM	UNIT	TOTAL
STRUCTURAL REPAIR OF CONCRETE \leq 5"	SO. FT.	13
ELASTOMERIC BEARING ASSEMBLY, TYPE 1	EACH	7
FURNISHING AND ERECTING STRUCTURAL STEEL	POUND	1335
JACK AND REMOVE BEARING	EACH	7
ANCHOR BOLT, 1" ϕ	EACH	14
APPROACH SLAB REMOVAL AND REPLACEMENT	SO.YD.	125
*PIPE UNDERDRAIN 6"	FOOT	88
CONCRETE HEADWALL FOR PIPE DRAIN	EACH	2
BRIDGE DECK GROOVING	SO. FT.	128
PROTECTIVE COAT	SO. FT.	128
BAR SPLICERS	EACH	78



PLAN
S.N. 099-0038

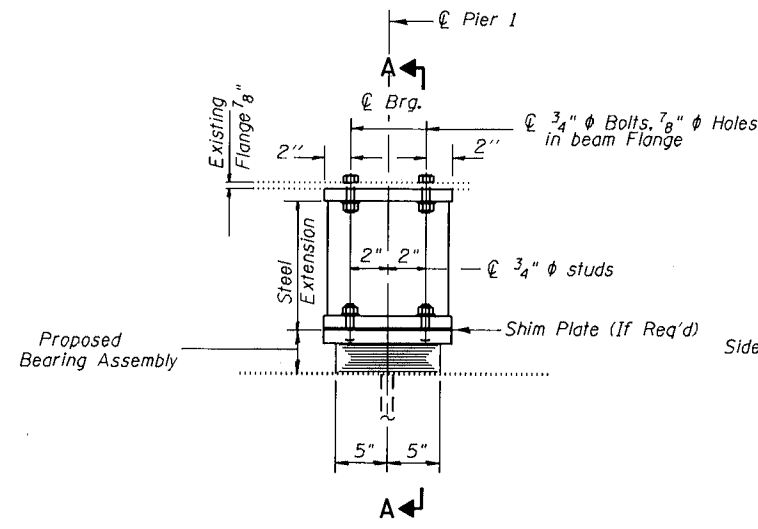
FOR EXISTING APPROACH STANDARD
2138 SEE SHEETS 7 OF 7

REVIS 8/31/15

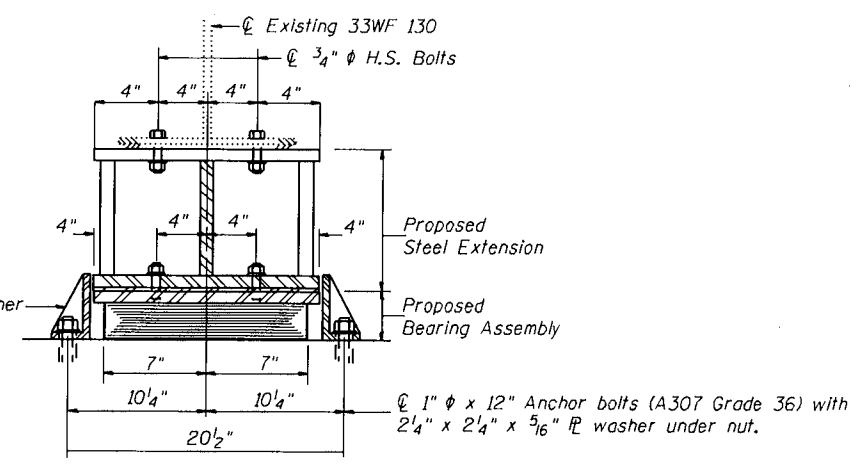


David Carl Puze 9/2/15
Expires 11/30/16

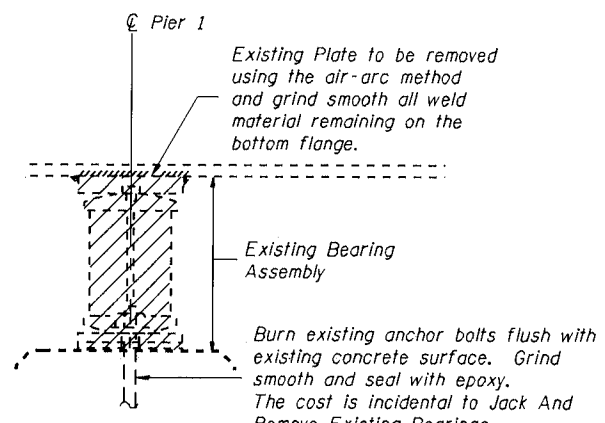
FILE NAME =	USER NAME = midje	DESIGNED - MVT	REVISED -	STATE OF ILLINOIS DEPARTMENT OF TRANSPORTATION	I-57 OVER ABANDONED RAILROAD CROSS SECTION, PLAN AND APPROACH SLABS SN. 099-0038 (NB)	F.A.I. RTE.	SECTION	COUNTY	TOTAL SHEETS	SHEET NO.	
Default	PLOT SCALE = 100.0000 / in.	CHECKED - RTB	REVISED -			57	99-2VB-1-2	WILL	21	5	
	PLOT DATE = 9/1/2015	DATE -	REVISED -			CONTRACT NO. 62A45					
						ILLINOIS FED. AID PROJECT					



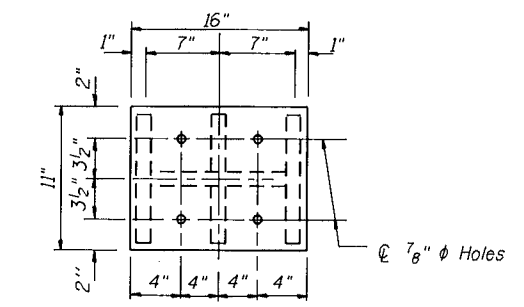
ELEVATION AT SOUTH PIER 1



SECTION A-A



EXISTING BEARING REMOVAL

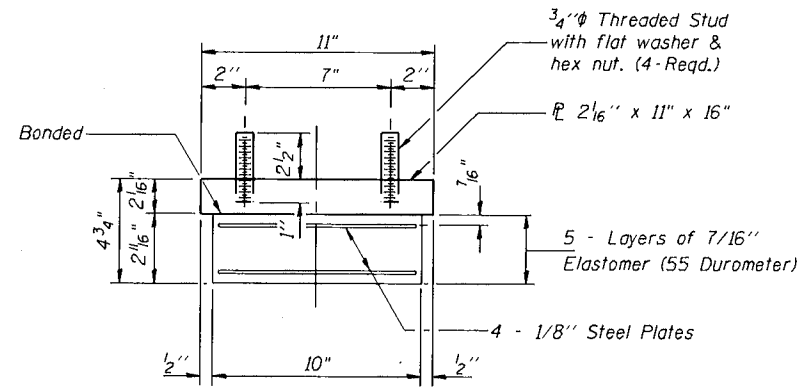


PLAN TOP AND BOTTOM PLATE

TYPE I ELASTOMERIC EXP. BRG.

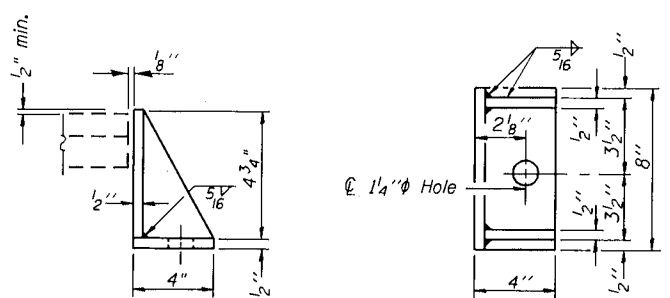
NOTES:

Side retainers, and other steel members required for the bearing assembly other than the steel extensions and Anchor Bolts shall be included in the cost of Elastomeric Bearing Assembly, Type I
 $\frac{7}{8}$ " diameter holes are to be drilled in the field to the bottom of existing beams. Cost included with Furnishing and Erecting Structural Steel.
 Prior to ordering any material, the contractor shall verify in the field all bearing heights and shim plate thickness dimensions.
 Diaphragm removal and Reinstallation may be required to facilitate drilling holes. Cost included with Furnishing and Erecting Structural Steel.
 Anchor bolts shall be ASTM F1554 all tread (or an Engineer - approved alternate material) of the grade(s) and diameter(s) specified. The corresponding specified grade of AASHTO M314 anchor bolts may be used in lieu of ASTM F1554.
 Drilled and set anchor bolts shall be installed according to Article 521.06 of the Standard Specifications.



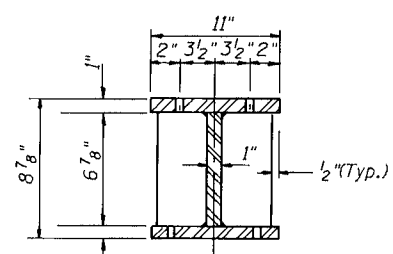
BEARING ASSEMBLY

Note: Shim plates shall not be placed under Bearing Assembly.

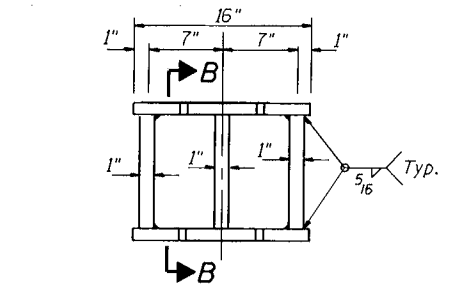


SIDE RETAINER

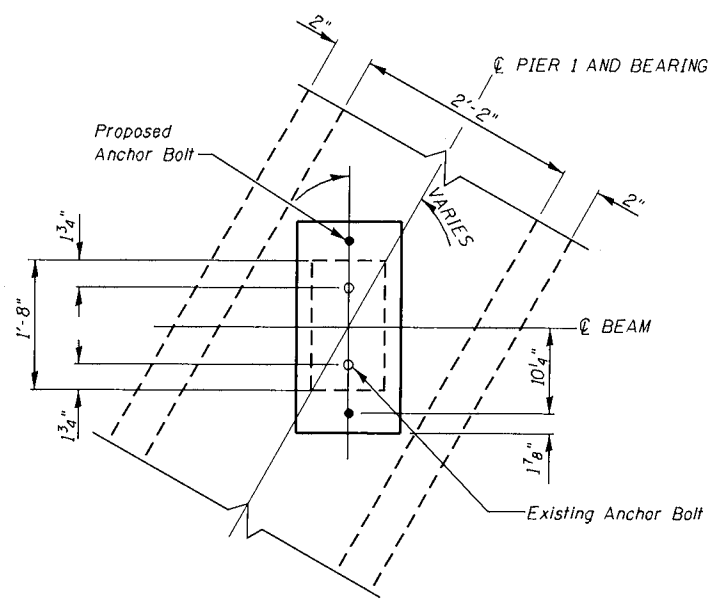
Equivalent rolled angle with stiffeners will be allowed in lieu of welded plates.



SECTION B-B



STEEL EXTENSION DETAIL



PARTIAL PLAN ANCHOR BOLT LOCATION

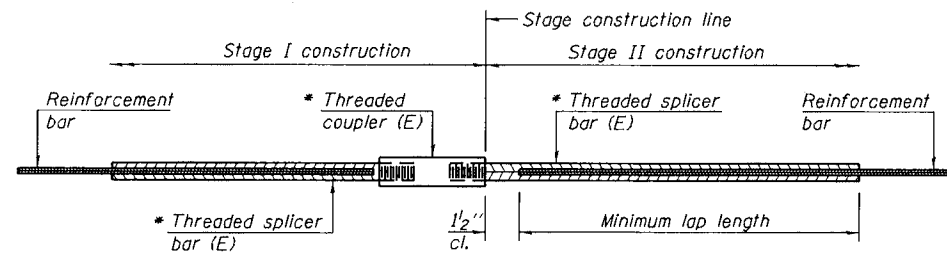
GIRDER REACTION TABLE

R/DL	(K)	62.5
R/LL	(K)	38.8
Imp.	(K)	10.4
R (Total)	(K)	111.7
Minimum Jack Capacity (Tons)		65

BILL OF MATERIAL

Item	Unit	Total
Elastomeric Bearing Assembly Type I	Each	7
Furnishing And Erecting Structural Steel	Pound	1335
Jack And Remove Existing Bearings	Each	7
Anchor Bolts, 1"	Each	14

REVISD 8/31/15

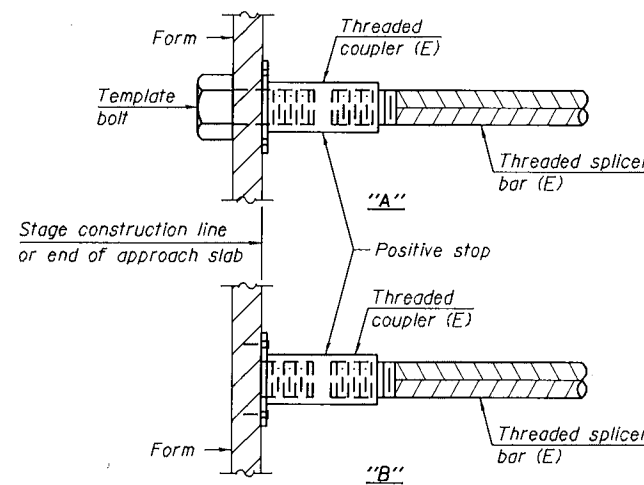


STANDARD BAR SPLICER ASSEMBLY

Threaded splicer bar length = min. lap length + 1/2" + thread length

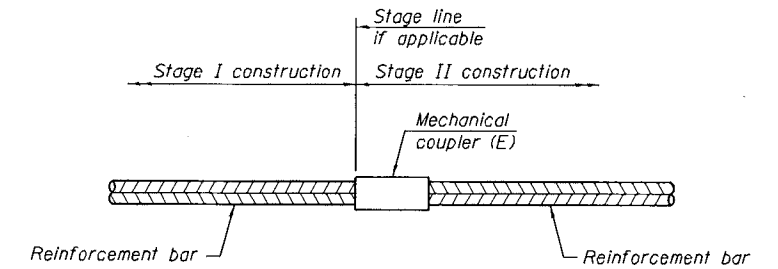
* Epoxy not required on Bar Splicer Assembly components used in conjunction with black bars.

Location	Bar size	No. assemblies required	Minimum lap length
Approach Slab	#5	66	3'-0"
Approach Slab	#4	12	2'-5"



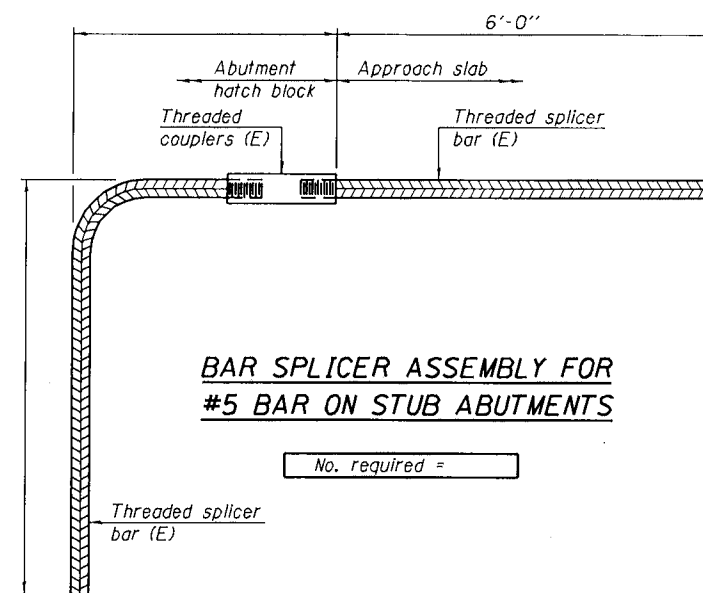
INSTALLATION AND SETTING METHODS

"A" : Set bar splicer assembly by means of a template bolt.
 "B" : Set bar splicer assembly by nailing to wood forms or cementing to steel forms.
 (E) : Indicates epoxy coating.



STANDARD MECHANICAL SPLICER

Location	Bar size	No. assemblies required



BAR SPLICER ASSEMBLY FOR #5 BAR ON STUB ABUTMENTS

No. required =

NOTES

Splicer bars shall be deformed with threaded ends and have a minimum 60 ksi yield strength.
 All reinforcement shall be lapped and tied to the splicer bars.
 Bar splicer assemblies shall be epoxy coated according to the requirements for reinforcement bars. See Section 508 of the Standard Specifications.
 See approved list of bar splicer assemblies and mechanical splicers for alternatives.

1 REVISED 8/31/15 AM

BSD-1

6-8-15

FILE NAME =	USER NAME = mdyja	DESIGNED - MVT	REVISED -
p:\11\084EB(DINTEG)\Illinois.gov\FWIDOT\Documents\DOT Offices\District 1\Projects\Struc\OR\099-0038.dgn		CHECKED - RTB	REVISED -
		DATE	REVISED -

STATE OF ILLINOIS
 DEPARTMENT OF TRANSPORTATION

I-57 OVER ABANDONED RAILROAD
 NORTH AND SOUTH APPROACH SLAB
 SN. 099-0038 (NB)

SCALE:	SHEET NO. 6 OF 7 SHEETS	STA.	TO STA.	F.A.I. RTE. 57	SECTION 99-2VB-1-2	COUNTY WILL	TOTAL SHEETS 21	SHEET NO. 9
								CONTRACT NO. 62A45
ILLINOIS FED. AID PROJECT								