

TREE REMOVAL, ACRES				
LOCATION	VERTEX ID	STATION	OFFSET	AREA ACRES
PR US 52/IL 64	D1	1584+63	120 RT	
	D2	1585+93	118 RT	
	D3	1585+90	106 RT	
	D4	1585+38	71 RT	
	D5	1585+30	50 RT	
	D6	1585+52	24 RT	
	D7	1585+34	57 RT	
	D8	1585+14	81 RT	
	D9	1584+87	61 RT	
	D10	1584+56	64 RT	
	D11	1584+64	30 RT	0.37

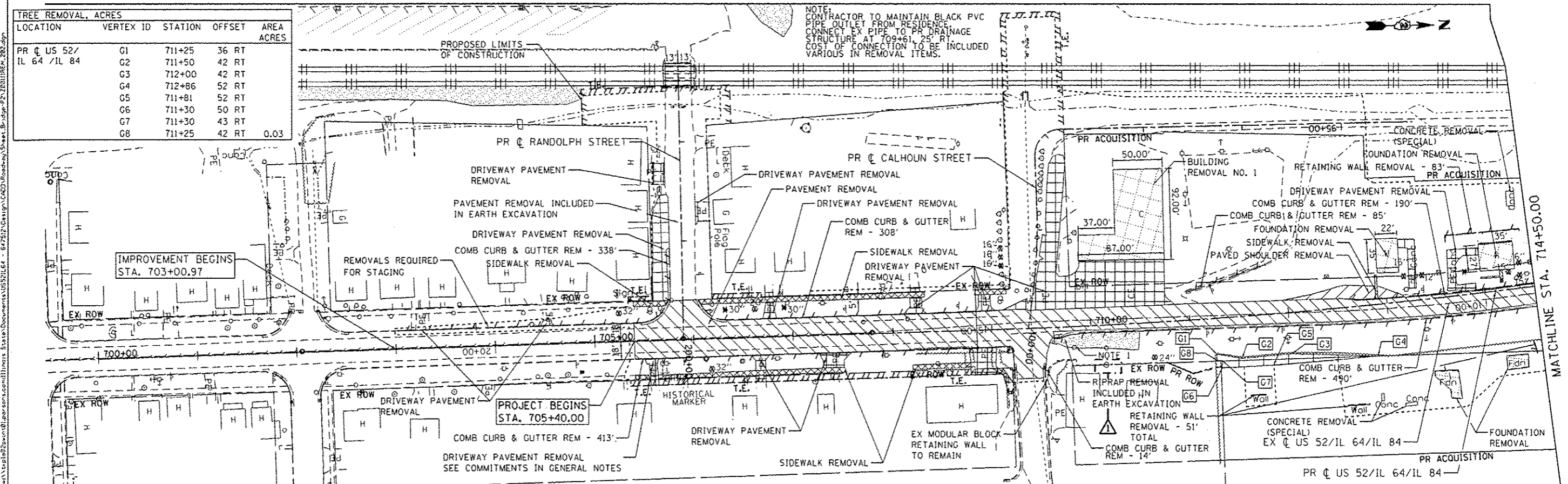
TREE REMOVAL, ACRES				
LOCATION	VERTEX ID	STATION	OFFSET	AREA ACRES
PR US 52/IL 64	E1	1584+81	133 LT	
	E2	1585+18	123 LT	
	E3	1585+22	185 LT	
	E4	1585+12	233 LT	
	E5	1584+72	226 LT	
	E6	1584+80	173 LT	
	E7	1584+60	172 LT	
	E8	1584+60	163 LT	0.11

TREE REMOVAL, ACRES				
LOCATION	VERTEX ID	STATION	OFFSET	AREA ACRES
PR US 52/IL 64/IL 84	F1	716+00	50 RT	
	F2	716+53	46 RT	
	F3	717+50	44 RT	
	F4	718+50	36 RT	
	F5	718+50	52 RT	
	F6	716+00	53 RT	0.06

LEGEND

- PAVEMENT REMOVAL
- PAVED SHOULDER REMOVAL
- TREE REMOVAL, ACRES
- BUILDING REMOVAL / FOUNDATION REMOVAL
- SIDEWALK REMOVAL
- DRIVEWAY PAVEMENT REMOVAL
- LINEAR REMOVALS
- TREE REMOVAL (SIZE")
- TREE REMOVAL, ACRES DELINEATION POINTS

TREE REMOVAL, ACRES				
LOCATION	VERTEX ID	STATION	OFFSET	AREA ACRES
PR US 52/IL 64 /IL 84	G1	711+25	36 RT	
	G2	711+50	42 RT	
	G3	712+00	42 RT	
	G4	712+86	52 RT	
	G5	711+81	52 RT	
	G6	711+30	50 RT	
	G7	711+30	43 RT	
	G8	711+25	42 RT	0.03



NOTE: CONTRACTOR TO MAINTAIN BLACK PVC PIPE OUTLET FROM RESIDENCE. CONNECT EX PIPE TO PR DRAINAGE STRUCTURE AT 709+61.25' RT. COST OF CONNECTION TO BE INCLUDED VARIOUS IN REMOVAL ITEMS.

NOTE 1: EX ROW PR ROW RIPRAP REMOVAL INCLUDED IN EARTH EXCAVATION. RETAINING WALL REMOVAL - 51' TOTAL COMB CURB & GUTTER REM - 14'

USER NAME # PRC07288	DESIGNED - JB	REVISED 1 JB 8/25/15
DRAWN - JB	CHECKED - FZ	DATE - 03-12-2015
PLLOT SCALE = 1/8" = 50'		
PLLOT DATE = 8/25/2015		

**STATE OF ILLINOIS
DEPARTMENT OF TRANSPORTATION**

**EXISTING PLAN AND REMOVALS
US 52/IL 64 AND IL 84**

SCALE: 1" = 50'	SHEET 2 OF 3 SHEETS	STA. 705+00 TO STA. 718+50	F.A.P. RTE. 17	SECTION 104B-2	COUNTY CARROLL/JACKSON	TOTAL SHEETS 528	SHEET NO. 63
						CONTRACT NO. 64G59	
FED. ROAD DIST. NO. ILLINOIS FED. AID PROJECT							