

CODE NO.	ITEM	UNIT	TOTAL QUANTITY	RURAL - CONSTRUCTION CODE - NHPP FUNDS										
				0720 IOWA 100% STATE			ILLINOIS MOIE							0770 CITY OF SAVANNA 100%
				ROADWAY 0004	BRIDGE 0011	BRIDGE LIGHTING 0021	1 80% FED / 20% STATE		2			UTILITIES 0043		
			ROADWAY 0004	BRIDGE 0011	BRIDGE LIGHTING 0021	RETAINING WALL 0040	ROADWAY LIGHTING 0021							
20100110	TREE REMOVAL (6 TO 15 UNITS DIAMETER)	UNIT	474	310				164						
20100210	TREE REMOVAL (OVER 15 UNITS DIAMETER)	UNIT	248 Δ					240 Δ						
20100500	TREE REMOVAL, ACRES	ACRE	3.25	2.50			0.75							
20101100	TREE TRUNK PROTECTION	EACH	10				10							
20101350	TREE PRUNING (OVER 10 INCH DIAMETER)	EACH	10				10							
20200100	EARTH EXCAVATION	CU YD	33,040	7,623			25,417							
* 20200200	ROCK EXCAVATION	CU YD	541				541							
20201200	REMOVAL AND DISPOSAL OF UNSUITABLE MATERIAL	CU YD	12,980	12,980										
20400800	FURNISHED EXCAVATION	CU YD	6,372	5,374			998							
20600110	GRANULAR EMBANKMENT, SPECIAL	TON	1,806	1,516			290							
20800150	TRENCH BACKFILL	CU YD	1,365				1,365							
21101615	TOPSOIL FURNISH AND PLACE, 4"	SQ YD	23,025				23,025							
21301052	EXPLORATION TRENCH 52" DEPTH	FOOT	500				500							
21400100	GRADING AND SHAPING DITCHES	FOOT	95				95							

* = SPECIALTY ITEMS + = NON PARTICIPATING ITEMS

Δ Rev. 9-3-15

FILE NAME: c:\pwworking\Illinois\35361\dms84\05-20011500-201.dgn

USER NAME : 35361	DESIGNED - JB	REVISED -
DRAWN - SQ	CHECKED - JC	REVISED -
DATE - 03-12-2015		

STATE OF ILLINOIS
DEPARTMENT OF TRANSPORTATION

SUMMARY OF QUANTITIES 1

SCALE: N/A SHEET 1 OF 24 SHEETS STA. TO STA.

F.A.P. RTE. 17	SECTION 1048-2	COUNTY CARROLL/JACKSON	TOTAL SHEETS 528	SHEET NO. 7
CONTRACT NO. 64059			ILLINOIS FED. AID PROJECT	

RURAL - CONSTRUCTION CODE - NHPP FUNDS

CODE NO.	ITEM	UNIT	TOTAL QUANTITY	RURAL - CONSTRUCTION CODE - NHPP FUNDS									
				IOWA 100% STATE			ILLINOIS 80% FED / 20% STATE						CITY OF SAVANNA 100%
				ROADWAY 0004	BRIDGE 0011	BRIDGE LIGHTING 0021	ROADWAY 0004	BRIDGE 0011	BRIDGE LIGHTING 0021	RETAINING WALL 0040	ROADWAY LIGHTING 0021	UTILITIES 0043	
• C2C01120	SHRUB, CEPHALANTHUS OCCIDENTALIS (BUTTON BUSH), 2' HEIGHT, CONTAINER	EACH	166	166									
• C2C09624	SHRUB, SAMBUCUS CANADENSIS (AMERICAN ELDER), 2' HEIGHT, CONTAINER	EACH	166	166									
X0300864	MAINTENANCE OF NAVIGATION	L SUM	1		0.5			0.5					
X0301847	WATER TRANSPORTATION FOR ENGINEER	CAL MO	30				30						
X0321809	PERMANENT GROUND ANCHOR	EACH	268							268			
X0322024	TRENCH DRAIN	EACH	1				1						
• X0322227	CLOSED CIRCUIT TELEVISION CAMERA SYSTEM	EACH	2				2						
* X0323387	TIRTL TRAFFIC DATA COLLECTION SYSTEM	EACH	1				1						
• X0324455	DRILLING AND SETTING SOLDIER PILES (IN SOIL)	CU FT	34,256							34,256			
• X0324456	DRILLING AND SETTING SOLDIER PILES (IN ROCK)	CU FT	24,003							24,003			
X0325366	STORM SEWER REPAIR	FOOT	3				3						
• X0326498	GFCI 20 AMP DUPLEX RECEPTACLE	EACH	26			13				13			
* X0326805	FOUNDATION REMOVAL	SQ FT	4,644				4,644						
• X0326935	CROSSHOLE SONIC LOGGING	EACH	32		16			16					
• X0327357	CONSTRUCTION VIBRATION MONITORING	L SUM	1				1						

* = SPECIALTY ITEMS + = NON PARTICIPATING ITEMS

USER NAME * 35361	DESIGNED - JB	REVISED -
PLOT SCALE * 2.0000 / 1" = 10'	DRAWN - SD	REVISED -
PLOT DATE * 3/20/2015	CHECKED - JC	REVISED -
	DATE - 03-12-2015	REVISED -

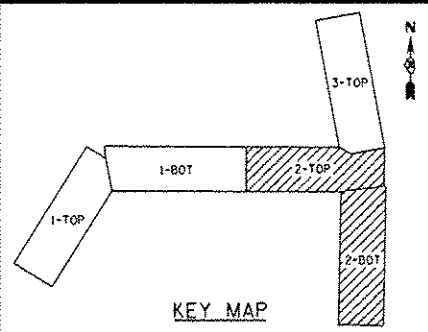
STATE OF ILLINOIS
DEPARTMENT OF TRANSPORTATION

SUMMARY OF QUANTITIES 18

SCALE: N/A SHEET 18 OF 24 SHEETS STA. TO STA.

F.A.P. RTE. 17	SECTION 104B-2	COUNTY CARROLL/JACKSON	TOTAL SHEETS 529	SHEET NO. 24
FED. ROAD DIST. NO.		ILLINOIS FED. AID PROJECT CONTRACT NO. 64059		

FILE NAME: c:\pwworking\illinois\35361\enr\81465\2011\1500_218.dgn



TREE REMOVAL, ACRES				
LOCATION	VERTEX ID	STATION	OFFSET	AREA ACRES
PR US 52/IL 64	D1	1584+63	120 RT	
	D2	1585+93	118 RT	
	D3	1585+90	106 RT	
	D4	1585+38	71 RT	
	D5	1585+30	50 RT	
	D6	1585+52	24 RT	
	D7	1585+34	57 RT	
	D8	1585+14	81 RT	
	D9	1584+87	61 RT	
	D10	1584+56	64 RT	
	D11	1584+64	30 RT	0.37

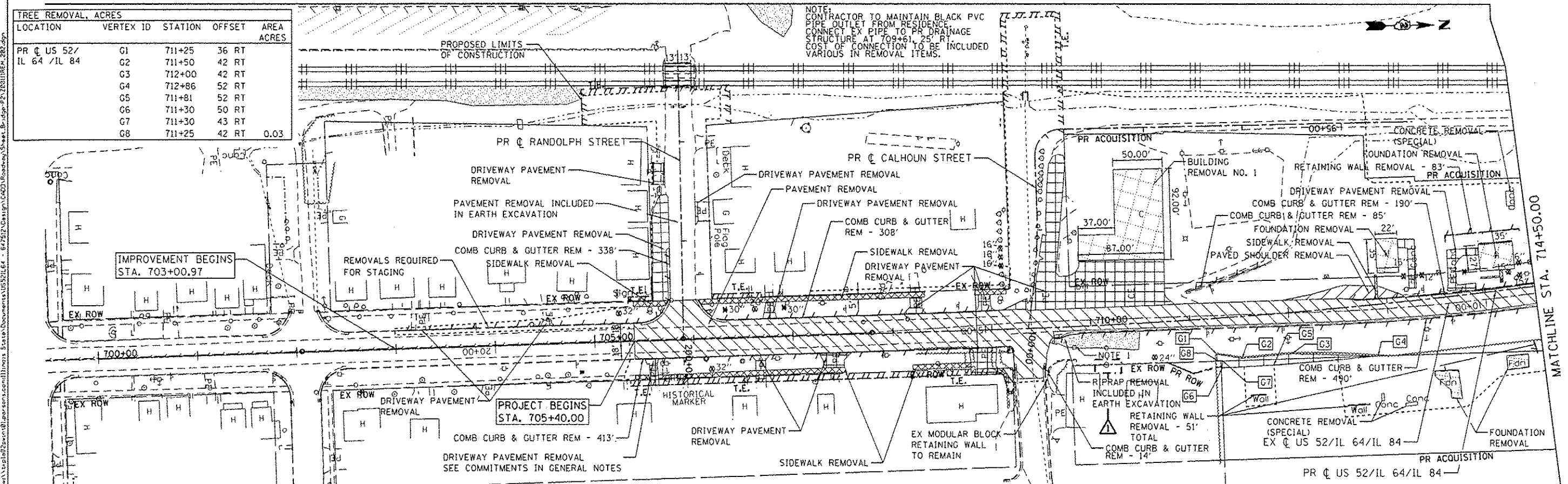
TREE REMOVAL, ACRES				
LOCATION	VERTEX ID	STATION	OFFSET	AREA ACRES
PR US 52/IL 64	E1	1584+81	133 LT	
	E2	1585+18	123 LT	
	E3	1585+22	185 LT	
	E4	1585+12	233 LT	
	E5	1584+72	226 LT	
	E6	1584+80	173 LT	
	E7	1584+60	172 LT	
	E8	1584+60	163 LT	0.11

TREE REMOVAL, ACRES				
LOCATION	VERTEX ID	STATION	OFFSET	AREA ACRES
PR US 52/IL 64/IL 84	F1	716+00	50 RT	
	F2	716+53	46 RT	
	F3	717+50	44 RT	
	F4	718+50	36 RT	
	F5	718+50	52 RT	
	F6	716+00	53 RT	0.06

LEGEND

- PAVEMENT REMOVAL
- PAVED SHOULDER REMOVAL
- TREE REMOVAL, ACRES
- BUILDING REMOVAL / FOUNDATION REMOVAL
- SIDEWALK REMOVAL
- DRIVEWAY PAVEMENT REMOVAL
- LINEAR REMOVALS
- TREE REMOVAL (SIZE")
- TREE REMOVAL, ACRES DELINEATION POINTS

TREE REMOVAL, ACRES				
LOCATION	VERTEX ID	STATION	OFFSET	AREA ACRES
PR US 52/IL 64 /IL 84	G1	711+25	36 RT	
	G2	711+50	42 RT	
	G3	712+00	42 RT	
	G4	712+86	52 RT	
	G5	711+81	52 RT	
	G6	711+30	50 RT	
	G7	711+30	43 RT	
	G8	711+25	42 RT	0.03



NOTE: CONTRACTOR TO MAINTAIN BLACK PVC PIPE OUTLET FROM RESIDENCE. CONNECT EX PIPE TO PR DRAINAGE STRUCTURE AT 709+61.25' RT. COST OF CONNECTION TO BE INCLUDED VARIOUS IN REMOVAL ITEMS.

IMPROVEMENT BEGINS STA. 703+00.97

PROJECT BEGINS STA. 705+40.00

NOTE 1: EX ROW PR ROW RIPPAP REMOVAL INCLUDED IN EARTH EXCAVATION

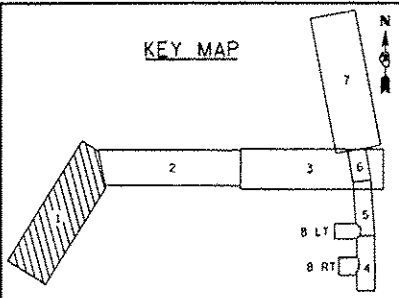
USER NAME # P0057288	DESIGNED - JB	REVISED 1 JB 8/25/15
	DRAWN - JB	REVISED -
PLOT SCALE = 1/8" = 50'	CHECKED - FZ	REVISED -
PLOT DATE = 8/25/2015	DATE - 03-12-2015	REVISED -

**STATE OF ILLINOIS
DEPARTMENT OF TRANSPORTATION**

**EXISTING PLAN AND REMOVALS
US 52/IL 64 AND IL 84**
SCALE: 1" = 50' SHEET 2 OF 3 SHEETS STA. 705+00 TO STA. 718+50

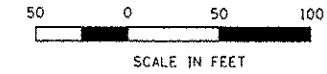
F.A.P. RTE. 17	SECTION 104B-2	COUNTY CARROLL/JACKSON	TOTAL SHEETS 528	SHEET NO. 63
FED. ROAD DIST. NO. ILLINOIS FED. AID PROJECT			CONTRACT NO. 64G59	

KEY MAP

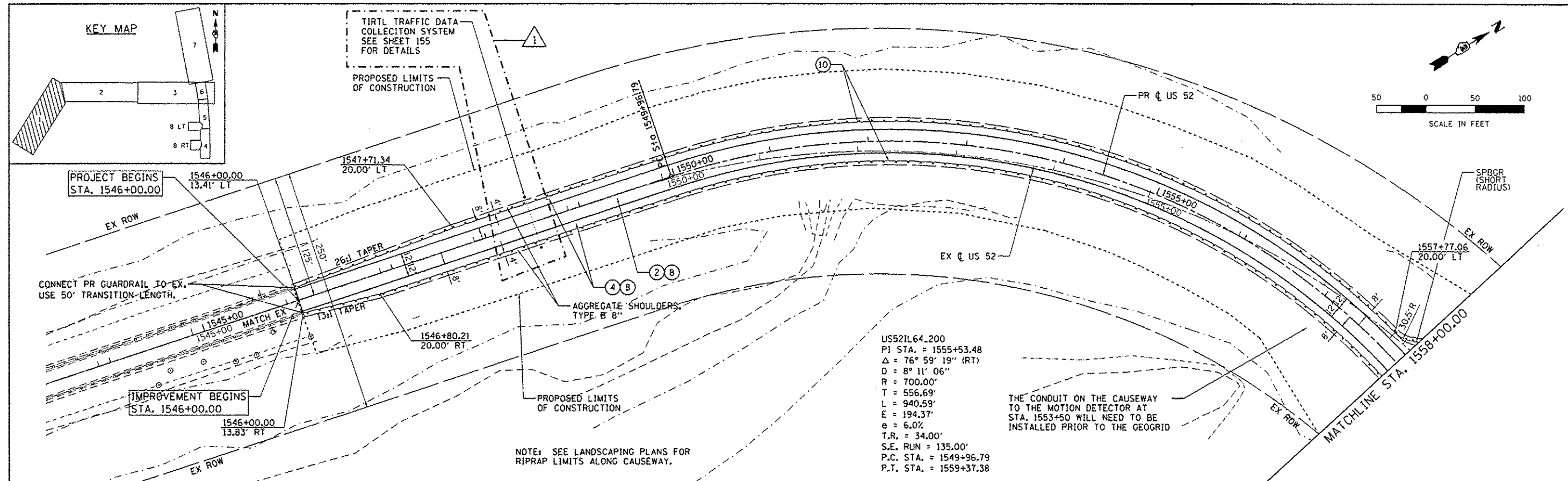


TIRTL TRAFFIC DATA COLLECTION SYSTEM SEE SHEET 155 FOR DETAILS

PROPOSED LIMITS OF CONSTRUCTION



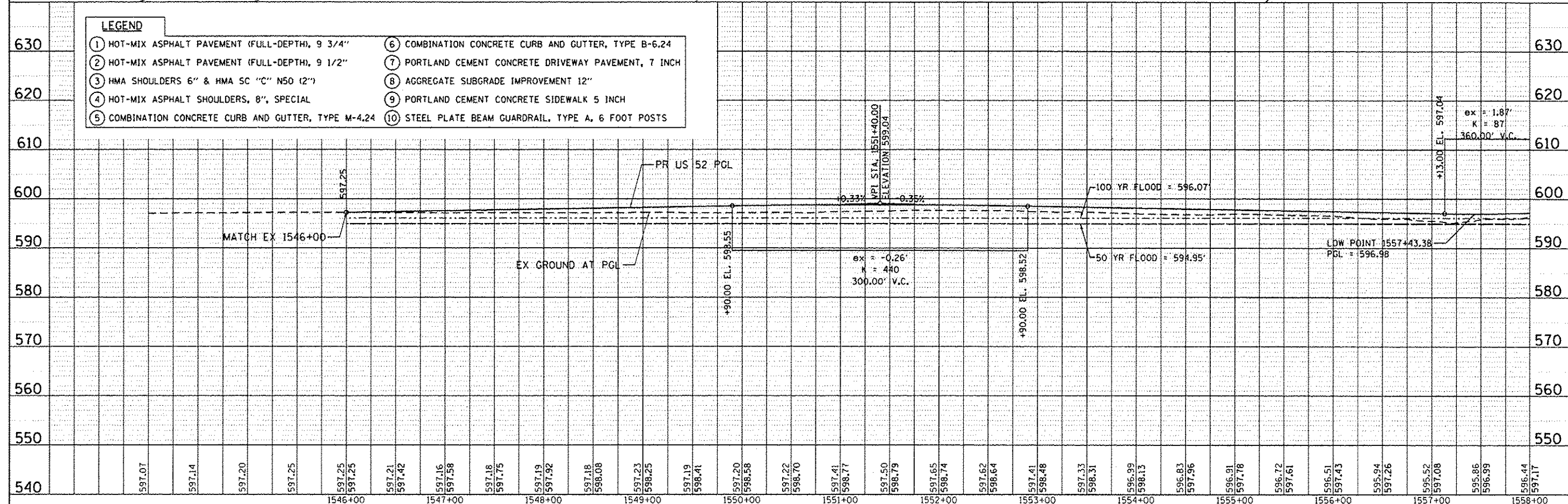
PLAN	DATE
BY	
REVISIONS	
NO.	
DATE	
BY	
DESCRIPTION	
NO.	
DATE	



LEGEND

- | | |
|---|--|
| ① HOT-MIX ASPHALT PAVEMENT (FULL-DEPTH), 9 3/4" | ⑥ COMBINATION CONCRETE CURB AND GUTTER, TYPE B-6.24 |
| ② HOT-MIX ASPHALT PAVEMENT (FULL-DEPTH), 9 1/2" | ⑦ PORTLAND CEMENT CONCRETE DRIVEWAY PAVEMENT, 7 INCH |
| ③ HMA SHOULDERS 6" & HMA SC "C" N50 (2") | ⑧ AGGREGATE SUBGRADE IMPROVEMENT 12" |
| ④ HOT-MIX ASPHALT SHOULDERS, 8", SPECIAL | ⑨ PORTLAND CEMENT CONCRETE SIDEWALK 5 INCH |
| ⑤ COMBINATION CONCRETE CURB AND GUTTER, TYPE M-4.24 | ⑩ STEEL PLATE BEAM GUARDRAIL, TYPE A, 6 FOOT POSTS |

PROFILE	DATE
BY	
REVISIONS	
NO.	
DATE	
BY	
DESCRIPTION	
NO.	
DATE	



FILE NAME : 200111PLN.201.dgn	USER NAME : P0057208	DESIGNED - JB	REVISED - JB 8/25/15	STATE OF ILLINOIS DEPARTMENT OF TRANSPORTATION	PROPOSED ROADWAY PLAN AND PROFILE US 52	F.A.P. RTE. 17	SECTION 1048-2	COUNTY CARROLL/JACKSON	TOTAL SHEETS 528	SHEET NO. 65	
Default	PLOT SCALE = 1/8" = 1' / 1/4"	CHECKED - JC	REVISED -			SCALE: 1" = 50'	SHEET 1 OF 8 SHEETS	STA. 1544+00	TO STA. 1558+00	FED. ROAD DIST. NO. ILLINOIS	FED. AID PROJECT
	PLOT DATE = 9/1/2015	DATE - 03-12-2015	REVISED -			CONTRACT NO. 64059					

