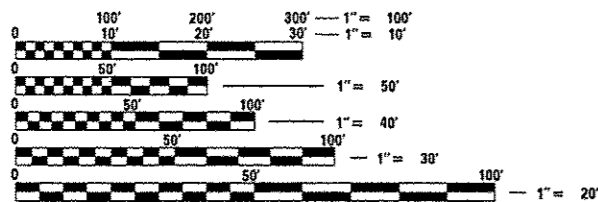


- 1 - COVER
- 2 - GENERAL NOTES AND COMMITMENTS
- 3-5 - SUMMARY OF QUANTITIES
- 6 - TYPICAL SECTIONS
- 7-8 - SCHEDULE OF QUANTITIES
- 9 - LOCATION PLAN
- 10 - PAVEMENT MARKING DETAILS AT IL 143

LIST OF STANDARDS

000001-06	STANDARD SYMBOLS, ABBREVIATIONS AND PATTERNS
001006	DECIMAL OF AN INCH AND OF A FOOT
406201-01	MAILBOX TURNOUT
420701-02	PAVEMENT FABRIC
442101-07	CLASS B PATCHES
442201-03	CLASS C AND D PATCHES
630001-10	STEEL PLATE BEAM GUARDRAIL
635006-03	REFLECTOR AND TERMINAL MARKER PLACEMENT
635011-02	REFLECTOR MARKER AND MOUNTING DETAILS
701006-05	OFF-RD OPERATIONS, 2L, 2W, 15' TO 24' FROM PAVEMENT EDGE
701011-04	OFF-RD MOVING OPERATIONS, 2L, 2W, DAY ONLY
701201-04	LANE CLOSURE, 2L, 2W, DAY ONLY, FOR SPEEDS > 45 MPH
701301-04	LANE CLOSURE, 2L, 2W, SHORT TIME OPERATIONS
701306-03	LANE CLOSURE, 2L, 2W, SLOW MOVING OPERATIONS DAY ONLY, FOR SPEEDS > 45 MPH
701311-03	LANE CLOSURE, 2L, 2W, SLOW MOVING OPERATIONS DAY ONLY
701336-06	LANE CLOSURE, 2L, 2W, WORK IN SERIES, FOR SPEEDS > 45 MPH
701901-04	TRAFFIC CONTROL DEVICES
780001-05	TYPICAL PAVEMENT MARKINGS
781001-03	TYPICAL APPLICATIONS RAISED REFLECTIVE PAVEMENT MARKERS

SEE SHEET 9 OF 10 FOR ADT INFORMATION

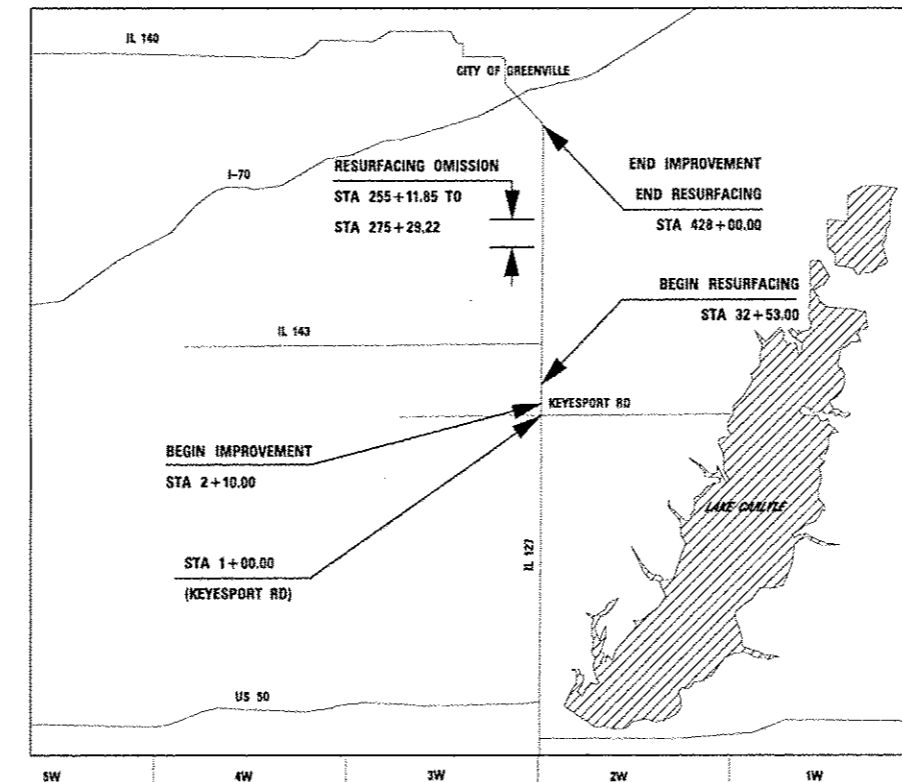


FULL SIZE PLANS HAVE BEEN PREPARED USING STANDARD ENGINEERING SCALES. REDUCED SIZED PLANS WILL NOT CONFORM TO STANDARD SCALES. IN MAKING MEASUREMENTS ON REDUCED PLANS, THE ABOVE SCALES MAY BE USED.

J.U.L.I.E.
JOINT UTILITY LOCATION INFORMATION FOR EXCAVATION
1-800-892-0123
OR 811

PROJECT ENGINEER: FRANK OPFER (618) 346-3175
PROJECT MANAGER: BILLIE OWEN (618) 346-3209

CONTRACT NO. 76H09



BEGIN LOCATION MAP NOT TO SCALE

LAT 38.74149
LONG -89.37207

END
LAT 38.85819
LONG -89.37143

STATE OF ILLINOIS
DEPARTMENT OF TRANSPORTATION
DIVISION OF HIGHWAYS
PROPOSED
HIGHWAY PLANS

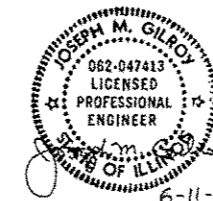
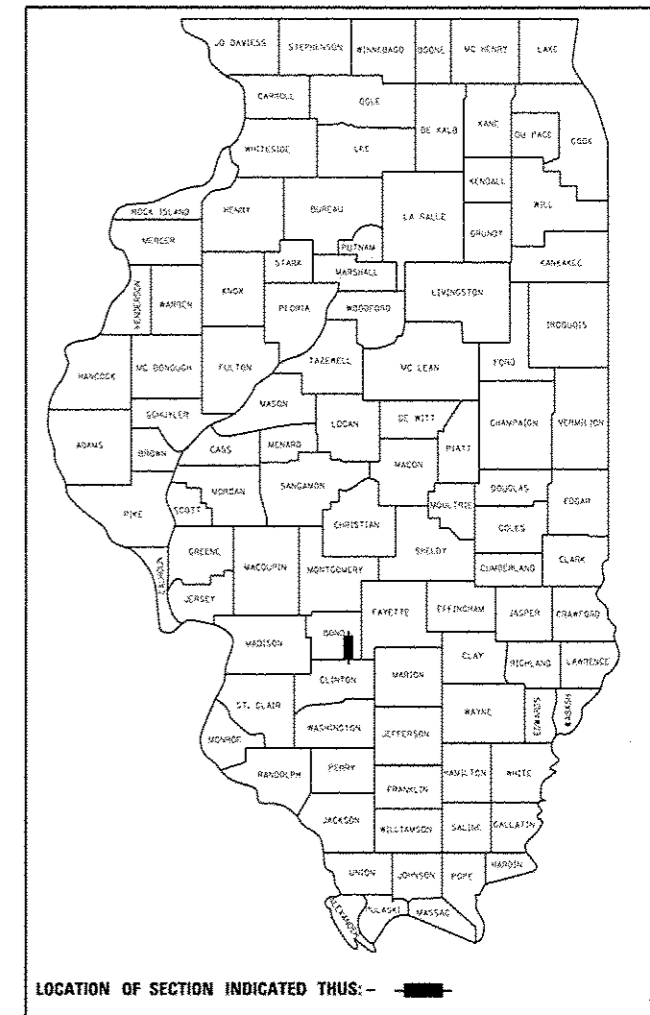
FAP ROUTE 42 (IL 127)
SECTION (110,111)RS-5
PROPOSED RESURFACING
BOND COUNTY
PROJECT : ACF-0042 (109)

C-98-034-14

GROSS LENGTH = 39550 FT. = 7.490 MILE
NET LENGTH = 37530 FT. = 7.108 MILE

F.A.P. RTE.	SECTION	COUNTY	TOTAL SHEETS	SHEET NO.
42	(110,111)RS-5	BOND	10	1
ILLINOIS			CONTRACT NO. 76H09	

D-98-033-14



JOSEPH M. GILROY
LIC. NO. 062.047413
EXP. 11/30/2015



STATE OF ILLINOIS
DEPARTMENT OF TRANSPORTATION
DIVISION OF HIGHWAYS

SUBMITTED June 22 20 15

Joseph M. Gilroy
DEPUTY DIRECTOR OF HIGHWAYS, REGION 5 ENGINEER

Aug 14 20 15
John D. Baranzelli, P.E.
ENGINEER OF DESIGN AND ENVIRONMENT

Aug 14 20 15
Orser Osman, P.E.
DIRECTOR OF HIGHWAYS, CHIEF ENGINEER

PRINTED BY THE AUTHORITY OF THE STATE OF ILLINOIS

GENERAL NOTES

1. BASE LINE AND STATIONING.
 - a. THIS PROJECT USES ARBITRARY STATIONING. THE PURPOSE OF THE BASE LINE AND STATIONING IN THESE PLANS ARE TO QUANTIFY DISTANCES AND IDENTIFY LOCATIONS ALONG THE LENGTH OF THE PROJECT. THE BASE LINE SHOWN IS NOT INTENDED TO BE A BASIS FOR DETERMINING ROADWAY ALIGNMENT OR FOR PRECISE LAYOUT OF CONSTRUCTION.
 - b. THE BASE LINE AND STATIONING WERE ESTABLISHED BY A LIMITED FIELD SURVEY, GENERALLY ALONG THE EXISTING CENTER STRIPE OF IL 127. NOTE THAT THE EXISTING CENTER STRIPE IS NOT ALWAYS CENTERED ON THE PAVEMENT. IN THE VICINITY OF IL 143, THE BASE LINE IS AN ESTIMATION IN THE FIELD OF THE THEORETICAL CONTINUATION OF THE CENTER STRIPE THROUGH THE INTERSECTION AREA.
 - c. FIELD SURVEY WAS BY GPS INSTRUMENT, SET TO USGS - ILLINOIS STATE PLANE WEST.
2. STAGING OF CONSTRUCTION. CONTRACTOR SHALL MAINTAIN TRAFFIC FLOW IN TWO DIRECTIONS ON IL 127 AND ON INTERSECTING ROADS AT ALL TIMES. STAGE THE WORK SO AS TO MINIMIZE DISRUPTIONS IN ACCESS TO ADJOINING PROPERTIES.
3. IN LOCATIONS WHERE THE HEIGHT OF THE GUARDRAIL ABOVE GRADE EXCEEDS 31-7/8" AS SHOWN IN STANDARD 630001, DUE TO APPARENT GROUND EROSION, PLACE ADDITIONAL AGGREGATE SHOULDER MATERIAL UP TO THE BASE OF THE GUARDRAIL TO ACHIEVE THE PROPER HEIGHT. WHERE THE HEIGHT OF THE GUARDRAIL ABOVE GRADE IS LESS THAN 27", REMOVE ACCUMULATED SEDIMENT AT THE FACE OF GUARDRAIL TO 27" BELOW TOP OF GUARDRAIL. THIS WORK IS INCLUDED IN THE FOLLOWING PAY ITEMS: AGGREGATE BASE REPAIR AND PREPARATION OF BASE.
4. THE FOLLOWING PARAMETERS WERE USED FOR ESTIMATING QUANTITIES.
 - AGGREGATE MATERIALS = 2.05 TONS/CU YD
 - HOT-MIX ASPHALT = 112 LBS/SO YD/INCH = 2.016 TONS/CU YD
5. CONTRACTOR SHALL VERIFY ALL DIMENSIONS AND CONDITIONS IN THE FIELD PRIOR TO CONSTRUCTION AND ORDERING OF MATERIALS
6. ACCESS SHALL BE MAINTAINED TO ALL PROPERTIES UNLESS OTHERWISE NOTED IN THE PLANS.
7. THE CONTRACTOR SHALL EXERCISE CARE IN PERFORMING REMOVALS SO AS NOT TO DISRUPT ADJOINING FEATURES THAT ARE TO REMAIN IN PLACE. ANY DAMAGE CAUSED TO ADJOINING FEATURES AS A RESULT OF THE CONTRACTOR'S NEGLIGENCE SHALL BE REPAIRED AT THE CONTRACTOR'S EXPENSE TO THE SATISFACTION OF THE OWNER.
8. THE THICKNESS OF THE BITUMINOUS MIXTURE SHOWN ON THE PLANS IS THE NOMINAL THICKNESS. DEVIATIONS FROM THE NOMINAL THICKNESS WILL BE PERMITTED WHEN SUCH DEVIATIONS OCCUR DUE TO IRREGULARITIES IN THE EXISTING SURFACE OR BASE ON WHICH THE BITUMINOUS MIXTURE IS PLACED.
9. NO OVERNIGHT LANE CLOSURES SHALL BE ALLOWED ON THE PROJECT.
10. 'ROAD CONSTRUCTION AHEAD' SIGNS SHALL BE PLACED AT EACH END OF THE PROJECT PLUS THE INTERSECTING SIDEROADS, AND WILL BE CONSIDERED INCLUDED IN THE TRAFFIC CONTROL PAY ITEMS. ALL CONSTRUCTION SIGNS SHALL BE 48" X 48" FLUORESCENT ORANGE.

11. THE CONTRACTOR SHALL MAINTAIN POSITIVE AND ADEQUATE DRAINAGE AT ALL TIMES.
12. A NOTCHED WEDGE LONGITUDINAL JOINT SHALL BE USED BETWEEN SUCESSIVE PASSES OF HMA SURFACE COURSE THAT HAS A DIFFERENCE IN ELEVATION OF GREATER THAN 2 INCHES BETWEEN LANES ON PAVEMENT THAT IS OPEN TO TRAFFIC. THE LONGITUDINAL JOINT SHALL BE CONSTRUCTED ACCORDING TO ARTICLE 406.06 OF THE STANDARD SPECIFICATIONS FOR ROAD AND BRIDGE CONSTRUCTION.
13. THE LOCATIONS OF THE REPAIR AREAS AS SHOWN IN THE PLANS ARE APPROXIMATE. THE EXACT LOCATIONS SHALL BE DETERMINED BY THE ENGINEER.
14. ALL DISTURBED ROADSIDE AREAS SHALL BE SEEDED WITH CLASS 2A SEED, FERTILIZER AND MULCH ACCORDING TO SECTION 250.04 OF THE STANDARD SPECIFICATIONS AND AS DIRECTED BY THE ENGINEER. THE COST FOR PERFORMING THIS WORK SHALL BE CONSIDERED TO BE INCLUDED IN THE UNIT PRICE BID FOR THE ITEM OF WORK INITIATING THE DISTURBANCE.
15. APPLICATION RATES FOR BITUMINOUS SURFACE TREATMENT, CLASS A-1 SHALL BE AS FOLLOWS. APPLICATION RATE MAY BE VARIED AT THE DIRECTION OF THE ENGINEER.
 - BITUMINOUS MATERIAL (SEAL COAT) - 0.40 GAL/SY
 - SEAL COAT AGGREGATE - 26 LB/SY
16. SEAL COAT AGGREGATE SHALL BE ACCORDING TO ARTICLE 1004.03 OF THE STANDARD SPECIFICATIONS, AND SHALL BE COARSE AGGREGATE CONSISTING OF CRUSHED GRAVEL, CRUSHED STONE, WET BOTTOM BOILER SLAG, CRUSHED SLAG, CRUSHED SANDSTONE, OR CRUSHED STEEL SLAG. THE AGGREGATE QUALITY SHALL BE CLASS C AND THE DELETERIOUS CHERT COUNT SHALL BE NO MORE THAN 25.0 PERCENT BY WEIGHT (MASS) AS DETERMINED BY THE ITP 203. THE AGGREGATE GRADATION SHALL BE CA 16.
17. BITUMINOUS MATERIAL USED FOR BITUMINOUS SURFACE TREATMENT SHALL BE EITHER A CRSP OR AN HFP POLYMER MODIFIED EMULSIFIED ASPHALT MEETING THE REQUIREMENTS OF ARTICLE 1032.06(f)(2) OF THE STANDARD SPECIFICATIONS.

COMMITMENTS

NONE

MIXTURE REQUIREMENTS

MIXTURE USE	SURFACE	PATCHING
AC/PS	PG 64-22	PG 64-22
DESIGN AIR VOIDS	4.0% @ Ndos=70	4.0% @ Ndos=70
MIX COMPOSITION (GRADATION MIXTURE)	IL 9.5	IL 19.0
FRICTION AGG	MIXTURE "C"	MIXTURE "B"
QUALITY MGMT PROGRAM	QCP	QCCA

UTILITIES

ILLINOIS STATE LAW REQUIRES A 48-HOUR NOTICE BE GIVEN TO ALL UTILITIES WITHIN THE PROJECT AREA BEFORE DIGGING. FIELD MARKING OF FACILITIES MAY BE OBTAINED BY CONTACTING J.U.L.I.E. OR FOR NON-MEMBERS, THE UTILITY COMPANY DIRECTLY. AGENCIES KNOWN TO HAVE FACILITIES WITHIN THE PROJECT AREA ARE AS FOLLOWS:

UTILITY	ABOVE GROUND	BELOW GROUND
• AMEREN ILLINOIS	X	X
• AT&T ILLINOIS	X	X
• BOND MADISON WATER COMPANY		X
• ENABLE - MISSISSIPPI R. TRANSMISSION		X
• FRONTIER NORTH, INC.	X	X
• CITY OF GREENVILLE		X
• MARATHON PIPELINE, LLC		X
• PLAINS PIPELINE, L.P.		X
• SOUTHWESTERN ELECTRIC COOPERATIVE	X	X

MEMBERS OF J.U.L.I.E. CALL TOLL FREE (800) 892-0123 OR 811 AND ARE INDICATED BY • NON-J.U.L.I.E. MEMBERS MUST BE NOTIFIED INDIVIDUALLY.

CONZALEZ COMPANIES, LLC 618-222-2221 WWW.CONZALEZCOS.COM

FILE NAME = #FILES1	USER NAME = #USER#	DESIGNED - JG	REVISED -
		DRAWN - NC	REVISED -
		CHECKED - CH	REVISED -
		DATE - 08/11/2015	REVISED -

STATE OF ILLINOIS
DEPARTMENT OF TRANSPORTATION

GENERAL NOTES AND COMMITMENTS

F.A.P. RTE.	SECTION	COUNTY	TOTAL SHEETS	SHEET NO.
42	ILLINOIS-5	BOND	10	2
			CONTRACT NO. 76H09	
ILLINOIS PEG. AID PROJECT				

PLOT DRIVER = #PLOTDR#
PER NAME = #PERNAME#

SCALE: SHEET NO. 1 OF 1 SHEETS STA. BEGIN TO STA. END

CODE NO.	ITEM	UNIT	TOTAL QUANTITY	CONSTR. CODE	
				80% FED	20% STATE
				ROADWAY	
				0005	
				RURAL	
35800100	PREPARATION OF BASE	SQ YD	30683	30683	
35800200	AGGREGATE BASE REPAIR	TON	99	99	
40300400	BITUMINOUS MATERIALS (COVER AND SEAL COATS)	TON	53	53	
40300600	SEAL COAT AGGREGATE	TON	399	399	
40600275	BITUMINOUS MATERIALS (PRIME COAT)	POUND	70440	70440	
40600990	TEMPORARY RAMP	SQ YD	311	311	
40603315	HOT-MIX ASPHALT SURFACE COURSE, MIX "C", N70	TON	14068	14068	
44000158	HOT-MIX ASPHALT SURFACE REMOVAL, 2 1/4"	SQ YD	110329	110329	
44200120	PAVEMENT PATCHING, TYPE II, 10 INCH	SQ YD	78	78	
44200124	PAVEMENT PATCHING, TYPE III, 10 INCH	SQ YD	55	55	
44200126	PAVEMENT PATCHING, TYPE IV, 10 INCH	SQ YD	107	107	
44200970	CLASS B PATCHES, TYPE II, 10 INCH	SQ YD	2505	2505	
44200974	CLASS B PATCHES, TYPE III, 10 INCH	SQ YD	83	83	
44200976	CLASS B PATCHES, TYPE IV, 10 INCH	SQ YD	383	383	

14

FILE NAME =	USER NAME = #USER#	DESIGNED -	REVISED -	STATE OF ILLINOIS DEPARTMENT OF TRANSPORTATION	SUMMARY OF QUANTITIES				F.A.P. RTE.	SECTION	COUNTY	TOTAL SHEETS	SHEET NO.
#FILE#		DRAWN -	REVISED -		42	(110.11)RS-5	BOND	10	3				
#MODELNAME#	PLOT SCALE = #SCALE#	CHECKED -	REVISED -		SCALE: SHEET 1 OF 3 SHEETS STA. TO STA.				CONTRACT NO. 76H09				
	PLOT DATE = #DATE#	DATE -	REVISED -		ILLINOIS FED. AID PROJECT								

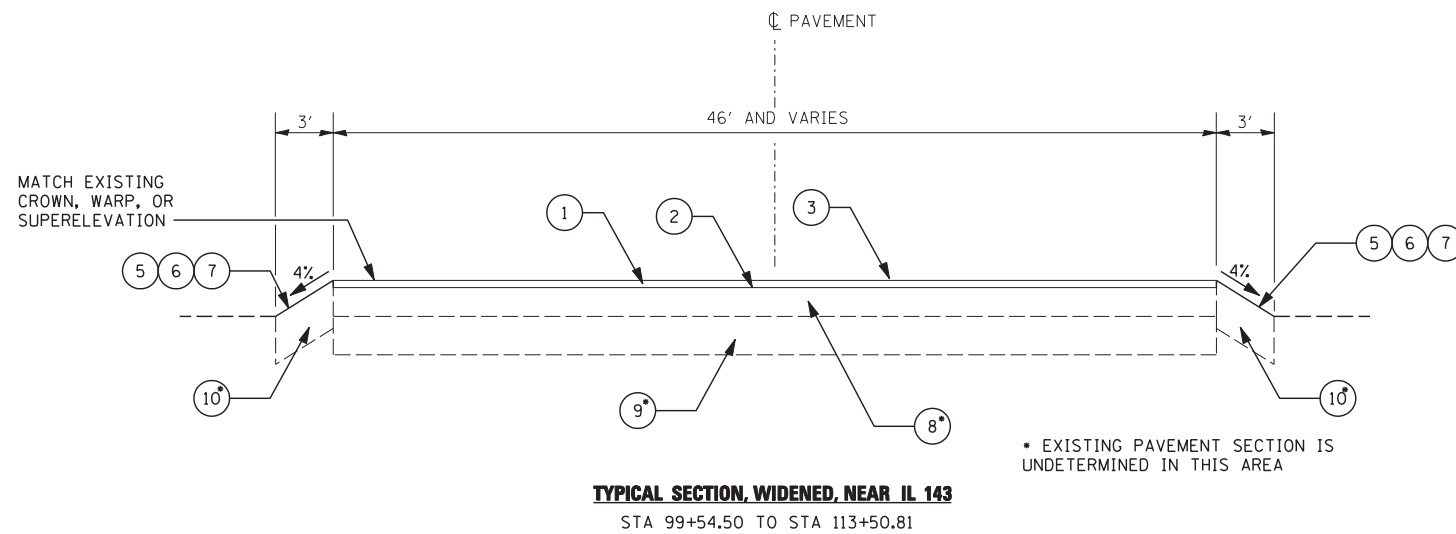
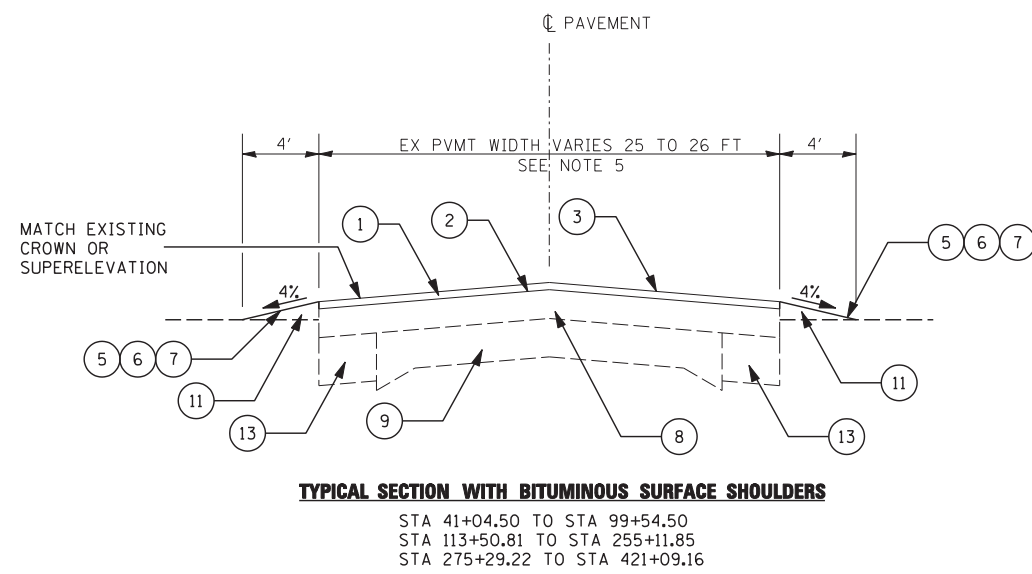
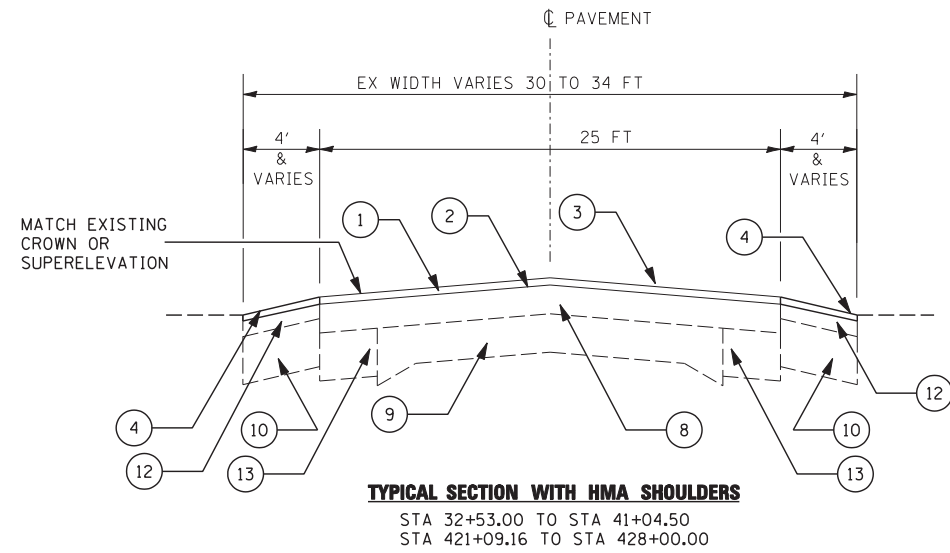
CODE NO.	ITEM	UNIT	TOTAL QUANTITY	CONSTR. CODE	
				80% FED 20% STATE	ROADWAY 0005 RURAL
44201299	DOWEL BARS 1 1/2"	EACH	4738	4738	
44213100	PAVEMENT FABRIC	SQ YD	466	466	
44213200	SAW CUTS	FOOT	15951	15951	
44213204	TIE BARS 3/4"	EACH	133	133	
48203100	HOT-MIX ASPHALT SHOULDERS	TON	129	129	
67000400	ENGINEER'S FIELD OFFICE, TYPE A	CAL MO	12	12	
67100100	MOBILIZATION	LSUM	1	1	
70100450	TRAFFIC CONTROL AND PROTECTION, STANDARD 701201	LSUM	1	1	
70100460	TRAFFIC CONTROL AND PROTECTION, STANDARD 701306	LSUM	1	1	
70100600	TRAFFIC CONTROL AND PROTECTION, STANDARD 701336	LSUM	1	1	
70300100	SHORT TERM PAVEMENT MARKING	FOOT	3753	3753	
70300210	TEMPORARY PAVEMENT MARKING LETTERS AND SYMBOLS	SO FT	31	31	
70300220	TEMPORARY PAVEMENT MARKING - LINE 4"	FOOT	96799	96799	
70301000	WORK ZONE PAVEMENT MARKING REMOVAL	SO FT	32265	32265	

FILE NAME #	USER NAME # *USER#	DESIGNED -	REVISED -	STATE OF ILLINOIS DEPARTMENT OF TRANSPORTATION	SUMMARY OF QUANTITIES				F.A.P. RTE.	SECTION	COUNTY	TOTAL SHEETS	SHEET NO.
#FILE#		DRAWN -	REVISED -		SCALE:	SHEET 2 OF 3 SHEETS	STA.	TO STA.	42	(110,111)RS-5	BOND	10	4
#MODELNAME#		CHECKED -	REVISED -						CONTRACT NO. 76H09				
		DATE -	REVISED -						ILLINOIS FED. AID PROJECT				

CODE NO.	ITEM	UNIT	TOTAL QUANTITY	CONSTR. CODE	
				ROADWAY	RURAL
* 78000100	THERMOPLASTIC PAVEMENT MARKING - LETTERS AND SYMBOLS	SQ FT	31	31	
* 78000200	THERMOPLASTIC PAVEMENT MARKING - LINE 4"	FOOT	96549	96549	
* 78000600	THERMOPLASTIC PAVEMENT MARKING - LINE 12"	FOOT	250	250	
* 78000650	THERMOPLASTIC PAVEMENT MARKING - LINE 24"	FOOT	29	29	
* 78008210	POLYUREA PAVEMENT MARKING TYPE I - LINE 4"	FOOT	4623	4623	
* 78100100	RAISED REFLECTIVE PAVEMENT MARKER	EACH	533	533	
* 78200410	GUARDRAIL MARKERS, TYPE A	EACH	8	8	
* 78201000	TERMINAL MARKER - DIRECT APPLIED	EACH	14	14	
78300100	PAVEMENT MARKING REMOVAL	SQ FT	1540	1540	
78300200	RAISED REFLECTIVE PAVEMENT MARKER REMOVAL	EACH	533	533	
Z0036200	PAINT CURB	FOOT	57	57	

* SPECIALTY ITEM

FILE NAME :	USER NAME : *USER*	DESIGNED -	REVISED -	STATE OF ILLINOIS DEPARTMENT OF TRANSPORTATION	SUMMARY OF QUANTITIES				F.A.P. RTE.	SECTION	COUNTY	TOTAL SHEETS	SHEET NO.
#FILE#		DRAWN -	REVISED -		42	(110.11)RS-5	BOND	10	5				
#MODELNAME#	PLOT SCALE * SCALE*	CHECKED -	REVISED -		SCALE: SHEET 3 OF 3 SHEETS STA. TO STA.				CONTRACT NO. 76H09				
	PLOT DATE * DATE*	DATE -	REVISED -		ILLINOIS FED. AID PROJECT								



- ① PROPOSED HOT-MIX ASPHALT SURFACE REMOVAL, 2 1/4"
- ② PROPOSED BITUMINOUS MATERIALS (PRIME COAT)
- ③ PROPOSED 2 1/4" HOT-MIX ASPHALT SURFACE COURSE, MIX "C", N70
- ④ PROPOSED HMA SHOULDER - 2 1/4" THICKNESS
- ⑤ AGGREGATE BASE REPAIR
- ⑥ PREPARATION OF BASE
- ⑦ BITUMINOUS SURFACE TREATMENT, CLASS A-1
- ⑧ EXISTING BITUMINOUS PAVEMENT
- ⑨ EXISTING PCC PAVEMENT (NOTE 2)
- ⑩ EXISTING AGGREGATE BASE
- ⑪ EXISTING AGGREGATE SHOULDER
- ⑫ EXISTING BITUMINOUS SHOULDER
- ⑬ EXISTING WIDENING

NOTE:

1. THICKNESS OF EXISTING BITUMINOUS OVERLAYS IS ESTIMATED TO BE 5-5/8" BASED ON 1973 PLANS FOR IDOT CONTRACT C-98-068-73, WHICH PROPOSED A 1-3/8" BINDER COURSE AND A 1-1/4" SURFACE COURSE OVER AND ALREADY EXISTING 2" I-11 ASPHALT OVERLAY, AND ON MARCH 2014 FIELD OBSERVATION OF A 1" BITUMINOUS OVERLAY THAT APPEARS MORE RECENT THAN 1973.
2. TYPICAL SECTION OF EXISTING PCC PAVEMENT IS BASED ON THE 1973 PLANS REFERENCED ABOVE, WHICH SHOW 6" PCC PAVEMENT WITH 9" THICKENED EDGES.
3. THICKNESS OF EXISTING BITUMINOUS SHOULDERS AND UNDERLYING AGGREGATE BASE COURSE ARE UNDETERMINED.
4. INCREASE THE WIDTH OF AGGREGATE BASE REPAIR, PREPARATION OF BASE, AS NECESSARY TO INCLUDE EXISTING MAILBOX TURNOUTS.
5. REMOVE HMA SURFACE FOR FULL WIDTH OF EXISTING PAVEMENT. NEW HMA SURFACE SHALL TYPICALLY BE 25 FEET WIDE, EXCEPT AS INDICATED ON THE WIDENED SECTION NEAR IL-143.
6. WHERE THERE ARE EXISTING HMA SHOULDERS, REMOVE HMA SURFACE FOR FULL WIDTH OF PAVEMENT AND SHOULDERS. NEW HMA SURFACE SHALL BE 4 FEET WIDE.
7. EXISTING PAVEMENT HAS PCC SURFACE FROM STA 1+00 TO STA 32+53.00 AND FROM STA 255+11.85 TO STA 275+29.22. QUANTITIES FOR CLASS B PATCHING IN THESE AREAS ARE BASED ON ESTIMATED 10" THICKNESS.
8. PREPARATION OF BASE WILL INCLUDE TRIMMING AND SHAPING OF EXISTING AGGREGATE SHOULDERS TO PROPER ELEVATION SUCH THAT THE FINAL AGGREGATE SURFACE COURSE WILL BE FLUSH WITH THE EDGE OF PAVEMENT. CROSS SLOPE ON AGGREGATE SHOULDERS SHALL BE 1/2 INCH PER FT (4%) UNLESS OTHERWISE DIRECTED.

PLOT DRIVER = \$PLTDVLS\$
PEN TABLE = \$PENTBL\$

GONZALEZ COMPANIES, LLC 618-222-2221 WWW.GONZALEZCOS.COM

FILE NAME = \$FILES\$	USER NAME = \$USERS\$	DESIGNED - JG	REVISED - -
		DRAWN - NC	REVISED - -
PLOT SCALE = \$SCALE\$		CHECKED - CH	REVISED - -
PLOT DATE = \$DATE\$		DATE - 06/11/2015	REVISED - -

**STATE OF ILLINOIS
DEPARTMENT OF TRANSPORTATION**

TYPICAL SECTIONS

SCALE: SHEET NO. 1 OF 1 SHEETS STA.BEGIN TO STA.END

F.A.P. RTE.	SECTION	COUNTY	TOTAL SHEETS	SHEET NO.
42	(110,111)RS-5	BOND	10	6
CONTRACT NO. 76H09				
ILLINOIS FED. AID PROJECT				

PAVING SCHEDULE								
STA	TO	STA	DISTANCE	HOT-MIX ASPHALT SURFACE COURSE, MIX "C", N70	HOT-MIX ASPHALT SURFACE REMOVAL, 2 1/4"	BITUMINOUS MATERIALS (PRIME COAT)	AGGREGATE (PRIME COAT)	HOT-MIX ASPHALT SHOULDERS
				TON	SQ YD	POUND	TON	TON
32+53.00		41+04.50	851.5	304	2,986	2,080	4	77
41+04.50		99+54.50	5,850.0	2,147	16,700	11,060	26	
99+54.50		113+50.81	1,396.3	832	6,469	4,340	10	
113+50.81		255+11.85	14,161.1	5,214	40,497	25,360	61	
275+29.22		421+09.16	14,579.9	5,319	41,297	26,060	62	
421+09.16		428+00.00	690.8	252	2,379	1,540	4	52
TOTALS				14,068	110,329	70,440	167	129

AGGREGATE (PREIME COAT) IS SHOWN FOR INFORMATIONAL PURPOSES ONLY AND IS NOT A SEPARATE PAY ITEM.

BITUMINOUS SURFACE TREATMENT CLASS A-1 SCHEDULE							
STA	TO	STA	DISTANCE	BITUMINOUS MATERIALS (COVER AND SEAL COATS)	SEAL COAT AGGREGATE	PREPARATION OF BASE	AGGREGATE BASE REPAIR
				TON	TON	SQ YD	TON
32+53.00		41+04.50	851.5	0.0	0.0	0	0.0
41+04.50		66+68.62	2,564.1	3.9	29.7	2,280	7.3
66+68.62		66+92.56	23.9	0.1	0.2	11	0.1
66+92.56		93+40.83	2,648.3	4.0	30.7	2,355	7.5
93+40.83		93+85.90	45.1	0.1	0.3	21	0.1
93+85.90		99+54.50	568.6	0.7	5.0	380	1.2
99+54.50		103+83.62	429.1	0.3	1.9	144	0.5
103+83.62		113+50.80	967.2	0.0	0.0	0	0.0
113+50.80		160+09.58	4,658.8	7.0	53.9	4,197	13.3
160+09.58		160+56.58	47.0	0.1	0.3	21	0.1
160+56.58		200+31.21	3,974.6	6.0	46.0	3,570	11.3
200+31.21		200+60.12	28.9	0.1	0.2	13	0.1
200+60.12		226+69.35	2,609.2	3.9	30.2	2,320	7.4
226+69.35		227+11.88	42.5	0.1	0.3	19	0.1
227+11.88		255+11.85	2,800.0	4.2	32.4	2,489	7.9
275+29.22		293+50.18	1,821.0	2.8	21.1	1,619	5.2
293+50.18		293+86.12	35.9	0.1	0.3	16	0.1
293+86.12		333+22.97	3,936.9	5.9	45.5	3,500	11.1
333+22.97		333+77.52	54.5	0.1	0.4	25	0.1
333+77.52		343+18.73	941.2	1.4	10.9	837	2.7
343+18.73		343+40.86	22.1	0.1	0.2	10	0.1
343+40.86		369+15.06	2,574.2	3.9	29.8	2,289	7.3
369+15.06		369+47.06	32.0	0.1	0.2	15	0.1
369+47.06		373+10.46	363.4	0.6	4.2	324	1.1
373+10.46		373+53.26	42.8	0.0	0.0	0	0.0
373+53.26		421+09.16	4,755.9	7.1	55.0	4,228	13.4
421+09.16		428+00.00	690.8	0.0	0.0	0	0.0
TOTALS				52.6	398.7	30,683	98.1
ROUNDED TOTALS				53	399	30,683	99

PAVEMENT PATCHING SCHEDULE							
LANE	STATION	LENGTH	WIDTH	AREA	PAVEMENT PATCHING, TYPE II, 10 INCH	PAVEMENT PATCHING, TYPE III, 10 INCH	PAVEMENT PATCHING, TYPE IV, 10 INCH
					SQ YD	SQ YD	FOOT
NB	32+83	4.00	12.00	5.33	5.33		
SB	32+83	4.00	12.00	5.33	5.33		
NB	62+19	6.00	12.00	8.00	8.00		
NB	91+86	10.00	12.00	13.33	13.33		
NB	129+40	20.00	12.00	26.67			26.67
NB	160+55	20.00	4.00	8.89	8.89		
NB	242+39	4.00	12.00	5.33	5.33		
SB	246+93	12.00	12.00	16.00		16.00	
NB	255+07	4.00	12.00	5.33	5.33		
SB	255+07	12.00	12.00	16.00		16.00	
NB	310+45	6.00	12.00	8.00	8.00		
NB	346+83	6.00	12.00	8.00	8.00		
SB	355+81	30.00	12.00	40.00			40.00
SB	374+82	20.00	12.00	26.67			26.67
SB	411+09	12.00	12.00	16.00		16.00	
SUBTOTAL					68	48	93
ALLOWANCE FOR ANTICIPATED FAILURES					10	7	14
TOTAL					78	55	107

GUARDRAIL RELATED ITEMS SCHEDULE					
GUARDRAIL LOCATION				GUARDRAIL MARKERS, TYPE A	TERMINAL MARKER - DIRECT APPLIED
STA	TO	STA	DISTANCE	EACH	EACH
				STA 304+42.00	TO
STA 303+36.00	TO	STA 305+29.50	RT	2	1
STA 267+57.50	TO	STA 269+72.00	LT	-	1
STA 267+80.50	TO	STA 269+45.00	RT	-	1
STA 264+51.00	TO	STA 266+28.00	LT	-	1
STA 264+36.00	TO	STA 266+51.00	RT	-	1
STA 238+38.50	TO	STA 239+63.50	LT	-	1
STA 236+47.00	TO	STA 239+97.50	RT	-	2
STA 45+42.00	TO	STA 48+33.50	LT	-	2
STA 44+01.50	TO	STA 47+18.00	RT	1	2
ALLOWANCE FOR ADDITIONAL *				5	-
TOTAL				8	14

* LOCATE AS DIRECTED.

TEMPORARY RAMP SCHEDULE			
STA	SIDE	DESCRIPTION	TEMPORARY RAMP
			SQ YD
32+53.0	N/A	BEGIN RESURFACING	26
66+78.5	LT	TAMALCO RD	8
93+71.4	RT	WISETOWN RD	13
107+12.5	LT	IL 143	22
160+35.6	RT	THIRD AVE	14
200+44.8	LT	GINGKO RD	11
226+89.9	RT	HUNTER SCHOOL RD	14
226+89.9	LT	HUNTER SCHOOL RD	14
254+96.9	N/A	END RESURFACING	21
275+29.2	N/A	BEGIN RESURFACING	21
293+67.0	RT	HOOKDALE RD	14
293+67.0	LT	HOOKDALE RD	14
333+50.0	RT	CONCRETE ENTRANCE	17
343+30.5	LT	CHUCK BUNTING RD	14
362+47.2	RT	RICHVIEW LN	14
369+31.4	RT	CRICKET LN	14
373+26.4	RT	AIRPORT AVE	14
373+26.4	LT	AIRPORT AVE	14
424+88.5	LT	OLD HWY 127	14
426+61.4	RT	SALE BARN RD	14
428+00.0	N/A	END RESURFACING	4
TOTALS			311

PAVEMENT MARKING SCHEDULE																			
STA	TO	STA	DISTANCE	THERMOPLASTIC PAVEMENT MARKING - LINE 4"			THERMOPLASTIC PAVEMENT MARKING - LINE 12"	THERMOPLASTIC PAVEMENT MARKING - LINE 24"	THERMOPLASTIC PAVEMENT MARKING - LETTERS AND SYMBOLS	POLYUREA PAVEMENT MARKING TYPE I - LINE 4"			RAISED REFLECTIVE PAVEMENT MARKER	PAVEMENT MARKING REMOVAL	RAISED RELECTIVE PAVEMENT MARKER REMOVAL	PAINT CURB			
				SOLID WHITE	SOLID YELLOW	SKIP DASH YELLOW	SOLID YELLOW	FOOT	FOOT	FOOT	FOOT	FOOT	FOOT	FOOT	FOOT	EACH	SQUARE FOOT	EACH	FOOT
32+53.00		99+79.68	6726.7	13,380		1,685							83		83				
32+53.00		39+02.33	649.3		650														
95+79.68		99+79.68	400.0		400														
99+79.68		100+42.38	62.7	306	306								6		6				
100+42.38		105+67.68	525.3	1,051	1,055		132						28		28				
105+67.68		107+10.68	143.0	425	410			29		31			13		13	57			
107+10.68		111+73.68	463.0	975	927		118						28		28				
111+73.68		112+03.68	30.0	60	60								6		6				
112+03.68		255+11.85	14308.2	28,470		3,580							178		178				
112+03.68		116+03.68	400.0		400														
237+41.95		245+48.31	806.4		806														
247+89.61		255+11.85	722.2		722														
255+11.85		275+29.22	2017.4						4,035	83	505		1,540						
275+29.22		428+00.00	15270.8	30,185		3,820							191		191				
289+42.64		297+42.96	800.3		800														
300+78.60		308+99.21	820.6		821														
302+47.73		311+50.60	902.9		903														
314+37.74		321+39.37	701.6		702														
321+39.37		329+64.20	824.8		825														
333+60.21		341+02.77	742.6		743														
356+23.38		364+19.04	795.7		796														
368+76.62		372+94.11	417.5		417														
373+68.56		374+60.59	92.0		92														
419+11.06		426+89.06	778.0		778														
TOTAL				74,852	12,612	9,085	250	29	31	4,035	83	505	533	1,540	533	57			

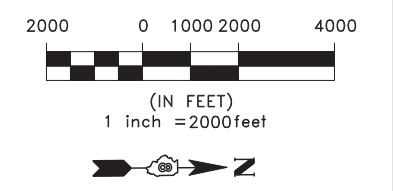
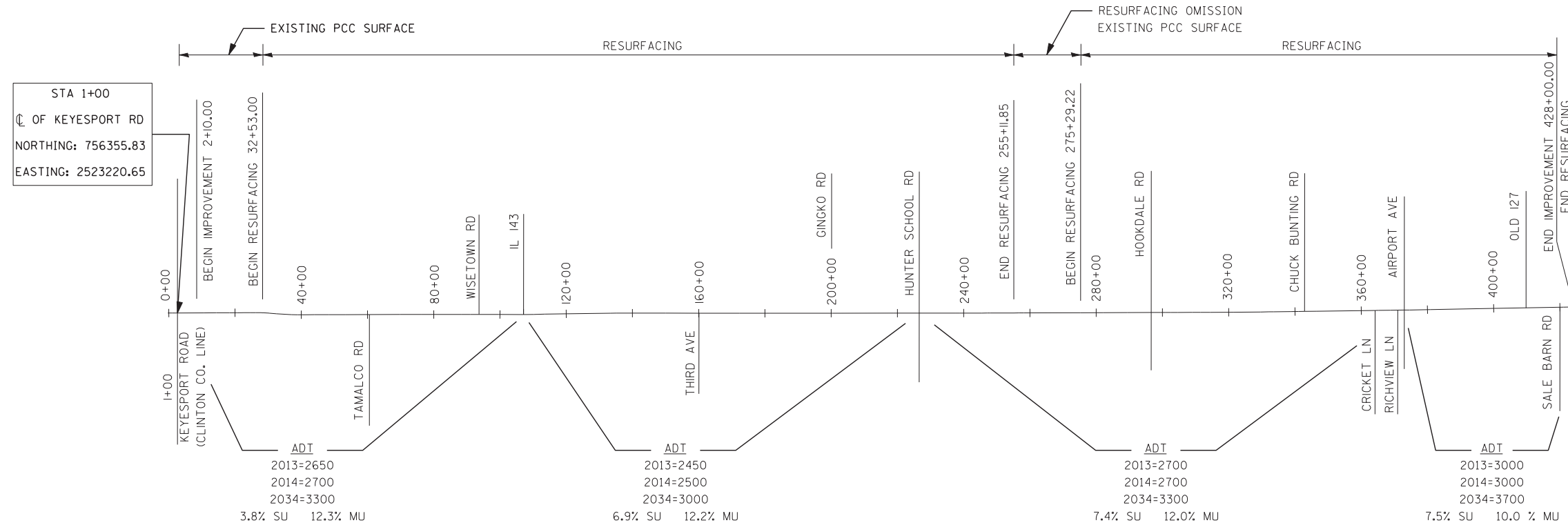
SHORT TERM PAVEMENT MARKING				
STA	TO	STA	DISTANCE	SKIP DASH YELLOW
32+53.00		255+11.85	22,258.9	2,226
275+29.22		428+00.00	15,270.8	1,527
TOTAL				3,753

TEMPORARY PAVEMENT MARKING SCHEDULE									
STA	TO	STA	DISTANCE	TEMPORARY PAVEMENT MARKING - LINE 4"			TEMPORARY PAVEMENT MARKING - LETTERS AND SYMBOLS	WORK ZONE PAVEMENT MARKING REMOVAL	
				SOLID WHITE	SOLID YELLOW	SKIP DASH YELLOW			
				FOOT	FOOT	FOOT	SQUARE FOOT	SQUARE FOOT	
32+53.00		99+79.68	6,726.7	13,380		1,685		5,017	
32+53.00		39+02.33	649.3		650			216	
95+79.68		99+79.68	400.0		400			133	
99+79.68		100+42.38	62.7	306	306			204	
100+42.38		105+67.68	525.3	1,051	1,187		31	776	
10									

CLASS B PATCHING SCHEDULE										
LANE	STATION	LENGTH	WIDTH	TYPE II	TYPE III	TYPE IV	SAW CUT	DOWEL BARS	TIE BARS	PAVEMENT
		FOOT	FOOT	10 INCH	10 INCH	10 INCH	(HMA SHLDR)	1 1/2"	3/4"	FABRIC
		SQ YD	SQ YD	SQ YD	SQ YD	SQ YD	FOOT	BARS	BARS	SQ YDS
NB	2+10	100	12			133	249	20	50	133
SB	2+10	100	12			133	249	20	50	133
SB	3+37	8	12	11			65	20		
SB	4+32	8	12	11			65	20		
SB	5+80	8	12	11			65	20		
NB	6+80	8	12	11			65	20		
NB	7+06	8	12	11			65	20		
NB	8+12	8	12	11			65	20		
NB	8+38	8	12	11			65	20		
SB	8+38	8	12	11			65	20		
NB	8+70	8	12	11			65	20		
SB	8+70	8	12	11			65	20		
NB	8+91	8	12	11			65	20		
SB	9+18	8	12	11			65	20		
NB	9+39	8	12	11			65	20		
NB	9+86	8	12	11			65	20		
NB	10+39	8	12	11			65	20		
NB	10+65	8	12	11			65	20		
SB	10+65	8	12	11			65	20		
NB	10+92	8	12	11			65	20		
NB	11+08	8	12	11			65	20		
NB	11+29	8	12	11			65	20		
SB	11+29	8	12	11			65	20		
NB	11+82	8	12	11			65	20		
SB	11+82	8	12	11			65	20		
NB	11+92	8	12	11			65	20		
SB	11+92	8	12	11			65	20		
NB	12+08	8	12	11			65	20		
SB	12+08	8	12	11			65	20		
NB	12+08	8	12	11			65	20		
NB	12+24	8	12	11			65	20		
NB	12+45	8	12	11			65	20		
SB	12+45	8	12	11			65	20		
NB	12+61	8	12	11			65	20		
NB	12+92	8	12	11			65	20		
NB	13+14	8	12	11			65	20		
SB	13+35	8	12	11			65	20		
NB	13+66	8	12	11			65	20		
SB	13+66	8	12	11			65	20		
SB	13+87	8	12	11			65	20		
NB	14+14	8	12	11			65	20		
SB	14+14	15	12		20		79	20		20
SB	14+46	8	12	11			65	20		
NB	14+93	30	12			40	109	20	15	40
NB	15+09	20	12			27	89	20		27
SB	15+46	12	12		16		73	20		16
NB	16+41	8	12	11			65	20		
NB	16+94	8	12	11			65	20		
SB	16+94	8	12	11			65	20		
SB	17+15	8	12	11			65	20		
NB	17+73	8	12	11			65	20		
SB	17+73	8	12	11			65	20		
NB	18+20	8	12	11			65	20		
NB	18+73	8	12	11			65	20		
SB	18+73	8	12	11			65	20		
NB	19+47	8	12	11			65	20		
NB	20+42	8	12	11			65	20		
NB	20+74	8	12	11			65	20		
SB	20+74	8	12	11			65	20		
NB	21+21	8	12	11			65	20		
SB	21+21	8	12	11			65	20		
NB	21+69	8	12	11			65	20		
SB	21+69	8	12	11			65	20		
NB	22+32	15	12		20		79	20		20
NB	22+48	8	12	11			65	20		
SB	22+48	8	12	11			65	20		
NB	22+80	12	12		16		73	20		16
NB	23+22	8	12	11			65	20		
SB	23+96	8	12	11			65	20		
NB	24+28	8	12	11			65	20		

CLASS B PATCHING SCHEDULE										
LANE	STATION	LENGTH	WIDTH	TYPE II	TYPE III	TYPE IV	SAW CUT	DOWEL BARS	TIE BARS	PAVEMENT
		FOOT	FOOT	10 INCH	10 INCH	10 INCH	(HMA SHLDR)	1 1/2"	3/4"	FABRIC
		SQ YD	SQ YD	SQ YD	SQ YD	SQ YD	FOOT	BARS	BARS	SQ YDS
NB	24+70	8	12	11			65	20		
NB	24+80	8	12	11			65	20		
SB	24+80	8	12	11			65	20		
NB	24+91	8	12	11			65	20		
SB	24+91	8	12	11			65	20		
NB	25+28	8	12	11			65	20		
NB	25+81	8	12	11			65	20		
NB	25+97	8	12	11			65	20		
SB	25+97	8	12	11			65	20		
NB	26+34	8	12	11			65	20		
NB	26+44	8	12	11			65	20		
SB	26+81	8	12	11			65	20		
NB	26+97	8	12	11			65	20		
SB	27+13	8	12	11			65	20		
NB	27+44	8	12	11			65	20		
NB	28+03	8	12	11			65	20		
SB	28+03	8	12	11			65	20		
NB	28+18	8	12	11			65	20		
NB	28+50	8	12	11			65	20		
NB	28+82	8	12	11			65	20		
SB	28+82	8	12	11			65	20		
SB	29+19	8	12	11			65	20		
NB	29+29	8	12	11			65	20		
SB	29+50	8	12	11			65	20		
NB	29+77	8	12	11			65	20		
SB	29+77	8	12	11			65	20		
NB	30+30	8	12	11			65	20		
SB	30+30	8	12	11			65	20		
NB	31+25	8	12	11			65	20		
SB	31+25	8	12	11			65	20		
NB	31+67	8	12	11			65	20		
SB	31+67	8	12	11			65	20		
NB	31+77	8	12	11			65	20		
SB	31+77	8	12	11			65	20		
SB	32+14	8	12	11			65	20		
NB	32+20	8	12	11			65	20		
NB	32+25	8	12	11			65	20		
SB	32+25	8	12	11			65	20		
NB	32+35	8	12	11			65	20		
SB	32+35	8	12	11			65	20		
NB	32+62	8	12	11			65	20		
SB	32+62	8	12	11			65	20		
NB	255+23	8	12	11			65	20		
SB	255+23	8	12	11			65	20		
NB	255+39	8	12	11			65	20		
SB	255+39	8	12	11			65	20		
NB	255+86	8	12	11			65	20		
SB	255+86	8	12	11			65	20		
NB	256+18	8	12	11			65	20		
NB	256+28	8	12	11			65	20		
SB	256+28	8	12	11			65	20		
SB	256+76	8	12	11			65	20		
NB	256+87	8	12	11			65	20		
SB	256+87	8	12	11			65	20		
NB	257+34	8	12	11			65	20		
SB	257+34	8	12	11			65	20		
NB	257+66	8	12	11			65	20		
SB	257+66	8	12	11			65	20		
NB	257+87	8	12	11			65	20		
SB	257+87	8	12	11			65	20		
NB	258+24	8	12	11			65	20		
SB	258+24	8	12	11			65	20		
NB	258+40	8	12	11			65	20		
SB	258+40	8	12	11			65	20		
NB	258+77	8	12	11			65	20		
SB	258+77	8	12	11			65	20		
NB	259+40	8	12	11			65	20		
SB	259+40	8	12	11			65	20		
NB	259+82	8	12	11			65	20		
SB	259+82	8	12	11			65	20		

CLASS B PATCHING SCHEDULE										
LANE	STATION	LENGTH	WIDTH	TYPE II	TYPE III	TYPE IV	SAW CUT	DOWEL BARS	TIE BARS	PAVEMENT
		FOOT	FOOT	10 INCH	10 INCH	10 INCH	(HMA SHLDR)	1 1/2"	3/4"	FABRIC
		SQ YD	SQ YD	SQ YD	SQ YD	SQ YD	FOOT	BARS	BARS	SQ YDS
SB	259+93	8	12	11			65	20		
NB	260+30	8	12	11			65	20		
SB	260+30	8	12	11			65	20		
NB	260+35	8	12	11			65	20		
SB	260+35	8	12	11			65	20		
NB	260+77	8	12	11			65	20		
NB	260+77	8	12	11			65	20		
SB	260+77	8	12	11			65	20		
NB	261+46	8	12	11			65	20		
SB	261+46	8	12	11			65	20		
NB	261+93	8	12	11			65	20		
SB	261+93	8	12	11			65	20		
NB	262+41	8	12	11			65	20		
SB	262+41	8	12	11			65	20		
NB	262+94	8	12	11			65	20		
SB	262+94	8	12	11			65	20		
NB	263+31	8	12	11			65	20		
SB	263+31	8	12	11			65	20		



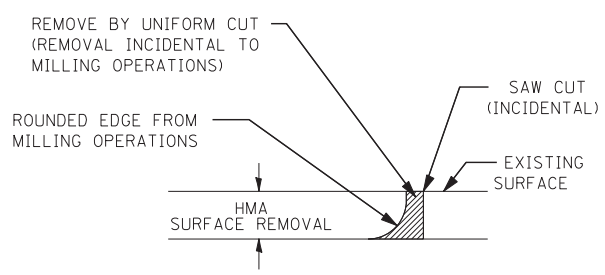
STA 1+00
 CL OF KEYESPORT RD
 NORTHING: 756355.83
 EASTING: 2523220.65

STA 428+00
 NORTHING: 799051.94
 EASTING: 2523029.17

LOCATION PLAN

NOTE: STATIONING IS ARBITRARY. STATIONING ESTABLISHED FOR TRACKING QUANTITIES ON THIS PROJECT.

- STA 66+78.54 - TAMALCO RD
- STA 93+71.36 - WISETOWN RD
- STA 107+10.68 - IL 143
- STA 160+35.63 - THIRD AVE
- STA 200+44.81 - GINGKO RD
- STA 226+89.87 - HUNTER SCHOOL RD
- STA 293+67.03 - HOOKDALE RD
- STA 343+30.54 - CHUCK BUNTING RD
- STA 362+47.24 - CRICKET LN
- STA 369+31.40 - RICHVIEW LN
- STA 373+26.41 - AIRPORT AVE
- STA 424+88.50 - OLD 127
- STA 426+61.38 - SALE BARN AVE



NOTES:

1. WHEN MILLING OPERATIONS PRODUCE A ROUNDED EDGE, THEN A SAW CUT SHALL BE USED TO MANUFACTURE A PERPENDICULAR EDGE AS SHOWN IN THE DETAIL. THE ENGINEER SHALL BE THE SOLE JUDGE CONCERNING THE USE OF THIS DETAIL.
2. APPLY PRIME COAT MATERIAL TO VERTICAL FACE OF EXISTING PAVEMENT AT SAWCUT LINE.
3. COST OF SAWCUT TO BE INCLUDED IN HOT-MIX ASPHALT SURFACE REMOVAL, 2 1/4".

TYPICAL BUTT JOINT DETAIL

PLOT DRIVER = \$PLTDVLS\$
PEN TABLE = \$PENTBL\$

GONZALEZ COMPANIES, LLC 618-222-2221 WWW.GONZALEZCOS.COM

FILE NAME = \$FILES\$	USER NAME = \$USERS\$	DESIGNED - JG	REVISED - -
		DRAWN - NC	REVISED - -
	PLOT SCALE = \$SCALE\$	CHECKED - CH	REVISED - -
	PLOT DATE = \$DATE\$	DATE - 06/11/2015	REVISED - -

**STATE OF ILLINOIS
 DEPARTMENT OF TRANSPORTATION**

LOCATION PLAN

SCALE: SHEET NO. 1 OF 1 SHEETS STA.BEGIN TO STA.END

F.A.P. RTE.	SECTION	COUNTY	TOTAL SHEETS	SHEET NO.
42	(110,111)RS-5	BOND	10	9
CONTRACT NO. 76H09				
ILLINOIS FED. AID PROJECT				

