

09-18-2015 LETTING ITEM 042

STATE OF ILLINOIS
DEPARTMENT OF TRANSPORTATION
DIVISION OF HIGHWAYS
PROPOSED
HIGHWAY PLANS

F.A.I. RTE.	SECTION	COUNTY	TOTAL SHEETS	SHEET NO.
I-57	(41-4,41-4-1)RS-2	JEFFERSON	26	1
		ILLINOIS	CONTRACT NO. 78437	

FOR INDEX OF SHEETS, SEE SHEET NO. 3

TRAFFIC DATA

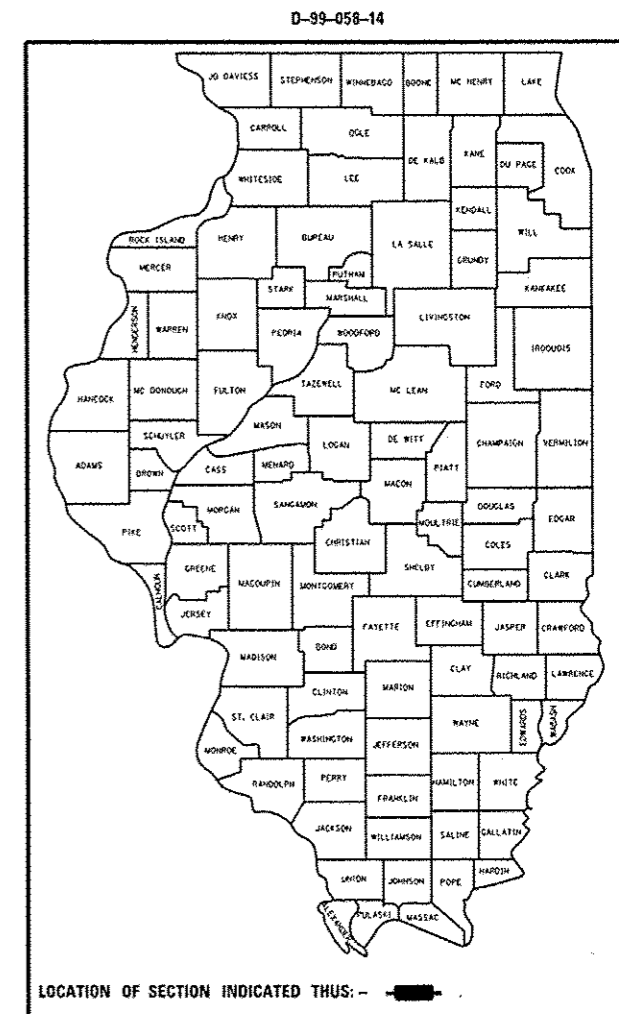
	2014	2034
PV	10705	14420
SU	850	1160
MU	6700	9160
ADT	18100	24740

42% TRUCKS

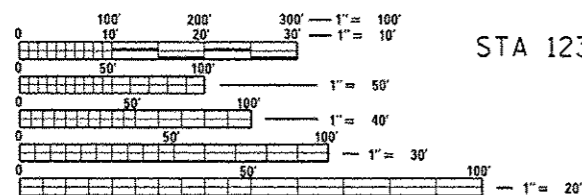
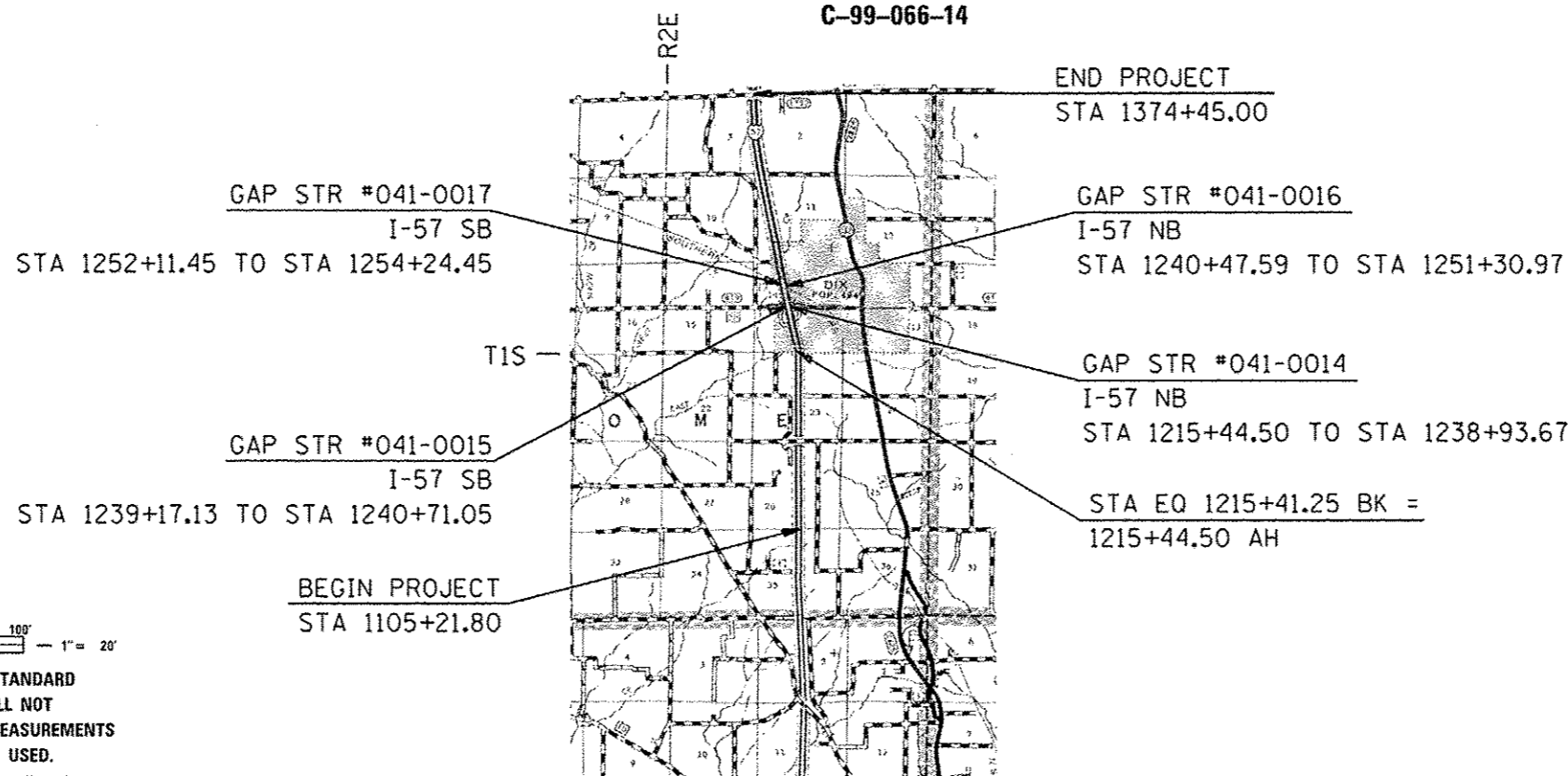
TOWNSHIPS

ROME

FAI ROUTE 57 (I-57)
SECTION (41-4,41-4-1)RS-2
PROJECT ACNHPP-0057 (311)
INTERSTATE RESURFACING
JEFFERSON COUNTY



C-99-066-14



FULL SIZE PLANS HAVE BEEN PREPARED USING STANDARD ENGINEERING SCALES. REDUCED SIZED PLANS WILL NOT CONFORM TO STANDARD SCALES. IN MAKING MEASUREMENTS ON REDUCED PLANS, THE ABOVE SCALES MAY BE USED.

J.U.L.I.E.
 JOINT UTILITY LOCATION INFORMATION FOR EXCAVATION
 1-800-892-0123
 OR 811

DESIGNER: VALERIE ROLLA
 PROJECT MANAGER: CHARLES STEIN

GROSS LENGTH = 26919.95 FT. = 5.1 MILE
 NET LENGTH = 26553.95 FT. = 5.03 MILE

CONTRACT NO. 78437

STATE OF ILLINOIS
 DEPARTMENT OF TRANSPORTATION
 DIVISION OF HIGHWAYS

SUBMITTED August 22, 2014
Gregory L. Keim
 DEPUTY DIRECTOR OF HIGHWAYS, REGION ENGINEER

Oct 17, 2014
John D. Baranelli, P.E.
 ENGINEER OF DESIGN AND ENVIRONMENT

Oct 17, 2014
Omer Osman, P.E.
 DIRECTOR OF HIGHWAYS, CHIEF ENGINEER

PRINTED BY THE AUTHORITY
OF THE STATE OF ILLINOIS

Prepared By: *Joe Zdaniewicz*
DISTRICT STUDIES & PLANS ENGINEER

Examined By: *J. L. E.*
DISTRICT LAND ACQUISITION ENGINEER

Examined By: *Carrie Nelson*
DISTRICT PROGRAM DEVELOPMENT ENGINEER

Examined By: *Kevin Kelly*
DISTRICT OPERATIONS ENGINEER

Examined By: *K. L.*
DISTRICT PROJECT IMPLEMENTATION ENGINEER

Examined By: *D. J. T. M.*
DISTRICT CONSTRUCTION ENGINEER

Examined By: *Chris...*
DISTRICT MATERIALS ENGINEER

FILE NAME *	USER NAME *	DESIGNED -	REVISED -
c:\pwwork\pwwork\pwwork\p0401961179437	shite-cvr-seg-ande\udgn	DRAWN -	REVISED -
#MODELNAME*	PLOT SCALE = 100:0000 1" = 10'	CHECKED -	REVISED -
	PLOT DATE = 8/21/2014	DATE -	REVISED -

**STATE OF ILLINOIS
DEPARTMENT OF TRANSPORTATION**

SCALE:	SHEET	OF	SHEETS	STA.	TO STA.	F.A.I. RTE.	SECTION	COUNTY	TOTAL SHEETS	SHEET NO.
						1-57	(41-4,41-4-DRS-2	JEFFERSON	26	2
ILLINOIS FED. AID PROJECT										CONTRACT NO. 78437

INDEX OF SHEETS

SHEET NO.	DESCRIPTION
1	COVER SHEET
2	SIGNATURE SHEET
3	INDEX OF SHEETS, STANDARDS, & MIX DESIGN
4	GENERAL NOTES & MTD CROSSING RESTRICTIONS
5-9	SUMMARY OF QUANTITIES
10-12	TYPICAL SECTIONS
13-16	SCHEDULES
17-21	PLAN & PROFILE SHEETS
22	BUTT JOINT DETAILS
23	MEDIAN CROSSOVER DETAIL
24	RESURFACING TRANSITION DETAIL
25	PARAPET DETAIL
26	DISTRICT DETAILS

STANDARDS

000001-06	635011-02
001001-02	642001-02
442001-04	701101-04
442101-07	701106-02
606001-06	701400-08
630001-10	701401-09
630301-06	701406-09
631006-08	701411-09
631011-09	701426-07
631026-06	701456-03
631031-13	701901-04
631033-06	780001-05
635001-01	781001-03
635006-03	

MIX DESIGN

Locations	Hot-Mix Asphalt Surface Course
Mixture Use(s):	Polymerized Hot-Mix Asphalt Surface Course, Mix E, N90
AC/PG:	SBS PG76-22
ABR % (Max):	See Special Provision
Design Air Voids:	4.0 %, 90 Gyration Design
Mixture Composition: (Gradation Mixture)	IL-9.5 mm
Friction Aggregate:	E Surface
Quality Management Program:	PFP

Locations	Hot-Mix Asphalt Binder Course
Mixture Use(s):	Polymerized Hot-Mix Asphalt Binder, N90, IL-19.0mm Fine Grade
AC/PG:	SBS PG76-22
ABR % (Max):	See Special Provision
Design Air Voids:	4.0 %, 90 Gyration Design
Mixture Composition: (Gradation Mixture)	IL-19.0mm Fine Grade
Friction Aggregate:	None
Quality Management Program:	PFP

Locations	HMA Shoulders & Incidental HMA Surfacing
Mixture Use(s):	Hot-Mix Asphalt Surface Course, Mix C, N90
AC/PG:	PG64-22
ABR % (Max):	See Special Provisions
Design Air Voids:	4.0 %, 90 Gyration Design
Mixture Composition: (Gradation Mixture)	IL-9.5mm
Friction Aggregate:	C Surface
Quality Management Program:	OCP (HMA Shoulders)

GENERAL NOTES

THE THICKNESS OF THE HOT-MIX ASPHALT MIXTURE SHOWN ON THE PLANS IS THE NOMINAL THICKNESS. DEVIATIONS FROM THE NOMINAL THICKNESS WILL BE PERMITTED WHEN SUCH DEVIATIONS OCCUR DUE TO IRREGULARITIES IN THE EXISTING SURFACE OR BASE ON WHICH THE HOT-MIX ASPHALT MIXTURE IS PLACED.

UNLESS OTHERWISE DIRECTED BY THE ENGINEER, RESURFACING SHALL BE PLACED IN A SEQUENCE THAT WILL MINIMIZE THE TIME THE CENTERLINE EDGE IS EXPOSED TO TRAFFIC. WHEN AT THE END OF A DAY'S OPERATION THE EXPOSED CENTERLINE EDGE IS GREATER THAN 2,000 FT., THE CONTRACTOR SHALL BE REQUIRED TO PAVE IN THE ADJACENT LANE ON THE FOLLOWING WORK DAY. PRIOR TO WINTER SHUT DOWN, RESURFACING ON ADJACENT LANES IS TO BE BROUGHT UP TO THE SAME ELEVATION.

FACTORS USED FOR ESTIMATING PLAN QUANTITIES ARE AS FOLLOWS AND SHALL NOT BE USED FOR THE BASIS OF FINAL QUANTITIES:

ALL HOT-MIX ASPHALT	2.016 TONS/CU YD
ALL AGGREGATE	2.05 TONS/CU YD
RIP RAP	1.5 TONS/CU YD

THE QUANTITY OF SHORT TERM PAVEMENT MARKING SHOWN IN THE PLANS IS BASED ON ONE APPLICATION EACH FOR THE HMA SURFACE REMOVAL, SURFACE COURSE, AND BINDER COURSE.

QUANTITIES SHOWN IN THE PLANS FOR PATCHING ARE ESTIMATES. THE ACTUAL AMOUNT OF PATCHING REQUIRED SHALL BE DETERMINED BY THE ENGINEER.

THE CONTRACTOR SHALL STAMP STATIONING IN THE HOT-MIX ASPHALT SURFACE AT 300 FT. INTERVALS ON THE OUTSIDE EDGE OF PAVEMENT AND AS DIRECTED BY THE ENGINEER. THE STATION SYMBOL STAMPS USED SHALL BE FURNISHED BY THE CONTRACTOR. THEY SHALL BE 5 1/2 IN. TALL OF A DESIGN APPROVED BY THE ENGINEER, AND SHALL REMAIN THE PROPERTY OF THE CONTRACTOR.

ATTAINMENT OF PROPER CROWN OR SUPERELEVATION SHALL BE FULLY ACCOMPLISHED WITH THE HOT-MIX ASPHALT SURFACE REMOVAL OR HOT-MIX ASPHALT BINDER COURSE, WHEN SPECIFIED.

IN ADDITION TO THE REQUIREMENTS OF ARTICLE 107.16 THE CONTRACTOR SHALL PROTECT THE SURFACE OF ALL BRIDGE DECKS AND BRIDGE APPROACH PAVEMENTS IN A MANNER SATISFACTORY TO THE ENGINEER BEFORE ANY EQUIPMENT IS ALLOWED TO CROSS THE STRUCTURE. PROTECTION SHALL BE PROVIDED FOR ALL EQUIPMENT AS DEFINED IN ARTICLE 101.16 REGARDLESS IF TRACK MOUNTED OR WHEELED

EXISTING PIPE UNDERDRAIN OUTLETS IN THE FORESLOPES OR MEDIAN SLOPES SHALL BE PRESERVED AND PROTECTED DURING CONSTRUCTION. ANY DAMAGE TO AN UNDERDRAIN OUTLET RESULTING FROM THE CONSTRUCTION ACTIVITY SHALL BE REPAIRED AT THE CONTRACTOR'S EXPENSE.

PRIOR TO PLACEMENT OF THE FINAL PAVEMENT MARKINGS THE RESIDENT ENGINEER SHOULD CONTACT THE BUREAU OF OPERATIONS AND ARRANGE FOR INSPECTION AND APPROVAL OF THE PAVEMENT MARKING LAYOUT.

COMMITMENTS: NONE

MTD CROSSING RESTRICTIONS TABLE

SN & CENTERLINE STATION ROUTE (I-57)	EXISTING FILL HEIGHT OVER BOX CULVERT	THICKNESS OF EXISTING PAVEMENT OVER BOX CULVERT	MTD CROSSING RESTRICTIONS
	FOOT	FOOT	
SN 041-7047 (STA. 1139+00)	15.8	1' - 1"	PENDING
SN 041-7048 (STA. 1217+50)	4.2	1' - 1"	PENDING
SN 041-0014 (STA. 1239+78.86)	N/A	N/A	PENDING
SN 041-0015 (STA. 1239+78.86)	N/A	N/A	PENDING
SN 041-0016 (STA. 1252+77.71)	N/A	N/A	PENDING
SN 041-0017 (STA. 1252+77.71)	N/A	N/A	PENDING
SN 041-7096 (STA. 1268+20)	6	1' - 1"	PENDING

SUMMARY OF QUANTITIES

COUNTY:	COUNTY:	JEFFERSON
ROUTE:	ROUTE:	FAI 57 (I-57)
FUNDING:	FUNDING:	90% FED/ 10% STATE
LOCATION:	LOCATION:	RURAL
	TOTAL QUANTITY	ROADWAY
		0005

CODE NUMBER	ITEM DESCRIPTION	UNIT	TOTAL QUANTITY	ROADWAY
25000200	SEEDING, CLASS 2	ACRE	0.75	0.75
25000350	SEEDING, CLASS 7	ACRE	0.75	0.75
25000400	NITROGEN FERTILIZER NUTRIENT	POUND	134	134
25000500	PHOSPHORUS FERTILIZER NUTRIENT	POUND	67	67
25000600	POTASSIUM FERTILIZER NUTRIENT	POUND	67	67
25000700	AGRICULTURAL GROUND LIMESTONE	TON	1.5	1.5
25100115	MULCH, METHOD 2	ACRE	1.5	1.5
28000250	TEMPORARY EROSION CONTROL SEEDING	POUND	223	223
28100207	STONE RIPRAP, CLASS A4	TON	578	578
40600275	BITUMINOUS MATERIALS (PRIME COAT)	POUND	53,106	53,106
40600285	POLYMERIZED BITUMINOUS MATERIALS (PRIME COAT)	POUND	102,062	102,062
40600982	HOT-MIX ASPHALT SURFACE REMOVAL - BUTT JOINT	SQ YD	6,166	6,166
40600990	TEMPORARY RAMP	SQ YD	1,262	1,262
40603243	POLYMERIZED HOT-MIX ASPHALT BINDER COURSE, IL-19.0, FG, N90	TON	17,844	17,844

SUMMARY OF QUANTITIES - CONT

COUNTY:	COUNTY:	JEFFERSON
ROUTE:	ROUTE:	FAI 57 (I-57)
FUNDING:	FUNDING:	90% FED/ 10% STATE
LOCATION:	LOCATION:	RURAL

CODE NUMBER	ITEM DESCRIPTION	UNIT	TOTAL QUANTITY	ROADWAY 0005
40603570	POLYMERIZED HOT-MIX ASPHALT SURFACE COURSE, MIX "E", N90	TON	13,506	13,506
40800050	INCIDENTAL HOT-MIX ASPHALT SURFACING	TON	64	64
44000156	HOT-MIX ASPHALT SURFACE REMOVAL, 1 3/4"	SQ YD	138,611	138,611
44200610	CLASS A PATCHES, TYPE II, 13 INCH	SQ YD	250	250
44200612	CLASS A PATCHES, TYPE III, 13 INCH	SQ YD	120	120
44200614	CLASS A PATCHES, TYPE IV, 13 INCH	SQ YD	387	387
44200994	CLASS B PATCHES, TYPE II, 12 INCH	SQ YD	196	196
44200998	CLASS B PATCHES, TYPE III, 12 INCH	SQ YD	89	89
44201000	CLASS B PATCHES, TYPE IV, 12 INCH	SQ YD	178	178
44201299	DOWEL BARS 1 1/2"	EACH	812	812
44213000	PATCHING REINFORCEMENT	SQ YD	757	757
44213100	PAVEMENT FABRIC	SQ YD	267	267
44213200	SAW CUTS	FOOT	4,968	4,968
44213204	TIE BARS 3/4"	EACH	151	151

SUMMARY OF QUANTITIES - CONT

COUNTY:	COUNTY:	JEFFERSON
ROUTE:	ROUTE:	FAI 57 (I-57)
FUNDING:	FUNDING:	90% FED/ 10% STATE
LOCATION:	LOCATION:	RURAL
	TOTAL QUANTITY	ROADWAY
		0005

CODE NUMBER	ITEM DESCRIPTION	UNIT	TOTAL QUANTITY	ROADWAY
48102100	AGGREGATE WEDGE SHOULDER, TYPE B	TON	2,526	2,526
48203100	HOT-MIX ASPHALT SHOULDERS	TON	14,073	14,073
50300255	CONCRETE SUPERSTRUCTURE	CU YD	6	6
50800205	REINFORCEMENT BARS, EPOXY COATED	POUND	1,615	1,615
60600605	CONCRETE CURB, TYPE B	FOOT	90	90
* 63000001	STEEL PLATE BEAM GUARDRAIL, TYPE A, 6 FOOT POSTS	FOOT	5,561	5,561
* 63100045	TRAFFIC BARRIER TERMINAL, TYPE 2	EACH	4	4
* 63100085	TRAFFIC BARRIER TERMINAL, TYPE 6	EACH	6	6
* 63100089	TRAFFIC BARRIER TERMINAL, TYPE 6B	EACH	12	12
* 63100167	TRAFFIC BARRIER TERMINAL, TYPE 1 (SPECIAL) TANGENT	EACH	14	14
63200310	GUARDRAIL REMOVAL	FOOT	5,966	5,966
63500105	DELINEATORS	EACH	222	222
64200116	SHOULDER RUMBLE STRIPS, 16 INCH	FOOT	103,689	103,689
67000400	ENGINEER'S FIELD OFFICE, TYPE A	CAL MO	9	9

* SPECIALTY ITEM

SUMMARY OF QUANTITIES - CONT

COUNTY:	COUNTY:	JEFFERSON
ROUTE:	ROUTE:	FAI 57 (I-57)
FUNDING:	FUNDING:	90% FED/ 10% STATE
LOCATION:	LOCATION:	RURAL
	TOTAL QUANTITY	ROADWAY 0005

CODE NUMBER	ITEM DESCRIPTION	UNIT	TOTAL QUANTITY	ROADWAY 0005
67100100	MOBILIZATION	LSUM	1	1
70100420	TRAFFIC CONTROL AND PROTECTION, STANDARD 701411	EACH	4	4
70100700	TRAFFIC CONTROL AND PROTECTION, STANDARD 701406	LSUM	1	1
70100800	TRAFFIC CONTROL AND PROTECTION, STANDARD 701401	LSUM	1	1
70100820	TRAFFIC CONTROL AND PROTECTION, STANDARD 701451	LSUM	1	1
70100825	TRAFFIC CONTROL AND PROTECTION, STANDARD 701456	LSUM	1	1
70106800	CHANGEABLE MESSAGE SIGN	CAL MO	6	6
70300100	SHORT TERM PAVEMENT MARKING	FOOT	19,756	19,756
70300220	TEMPORARY PAVEMENT MARKING - LINE 4"	FOOT	118,558	118,558
70300250	TEMPORARY PAVEMENT MARKING - LINE 8"	FOOT	1,818	1,818
70300280	TEMPORARY PAVEMENT MARKING - LINE 24"	FOOT	36	36
70301000	WORK ZONE PAVEMENT MARKING REMOVAL	SO FT	47,396	47,396
* 78000200	THERMOPLASTIC PAVEMENT MARKING - LINE 4"	FOOT	118,558	118,558
* 78000500	THERMOPLASTIC PAVEMENT MARKING - LINE 8"	FOOT	1,818	1,818

* SPECIALTY ITEM

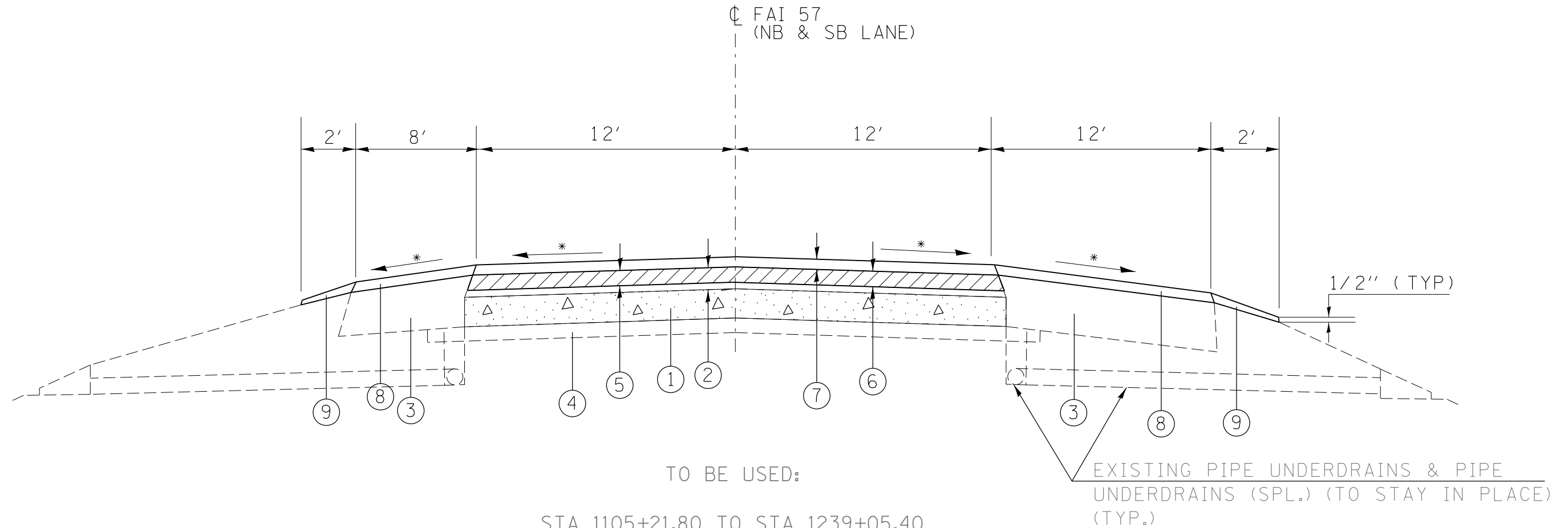
SUMMARY OF QUANTITIES - CONT

COUNTY:	COUNTY:	JEFFERSON
ROUTE:	ROUTE:	FAI 57 (I-57)
FUNDING:	FUNDING:	90% FED/ 10%STATE
LOCATION:	LOCATION:	RURAL
	TOTAL QUANTITY	ROADWAY
		0005

CODE NUMBER	ITEM DESCRIPTION	UNIT	TOTAL QUANTITY	ROADWAY
* 78000650	THERMOPLASTIC PAVEMENT MARKING - LINE 24"	FOOT	36	36
* 78004230	PREFORMED PLASTIC PAVEMENT MARKING, TYPE B - INLAID - LINE 6"	FOOT	13,386	13,386
* 78100100	RAISED REFLECTIVE PAVEMENT MARKER	EACH	794	794
* 78200410	GUARDRAIL MARKERS, TYPE A	EACH	98	98
* 78201000	TERMINAL MARKER - DIRECT APPLIED	EACH	14	14
78300200	RAISED REFLECTIVE PAVEMENT MARKER REMOVAL	EACH	794	794
X0322278	RODENT SHIELDS	EACH	132	132
X7010410	SPEED DISPLAY TRAILER	CAL MO	22	22
Z0005880	BRIDGE HANDRAIL REMOVAL	FOOT	192	192
Z0034105	MATERIAL TRANSFER DEVICE	TON	31,350	31,350
Ø Z0076600	TRAINEES	HOUR	500	500
Ø Z0076604	TRAINEES TRAINING PROGRAM GRADUATE	HOUR	500	500

* SPECIALTY ITEM Ø 0042

TYPICAL SECTION
 I-57 MAINLINE
 IN DIRECTION OF TRAFFIC
 (NOT TO SCALE)



TO BE USED:

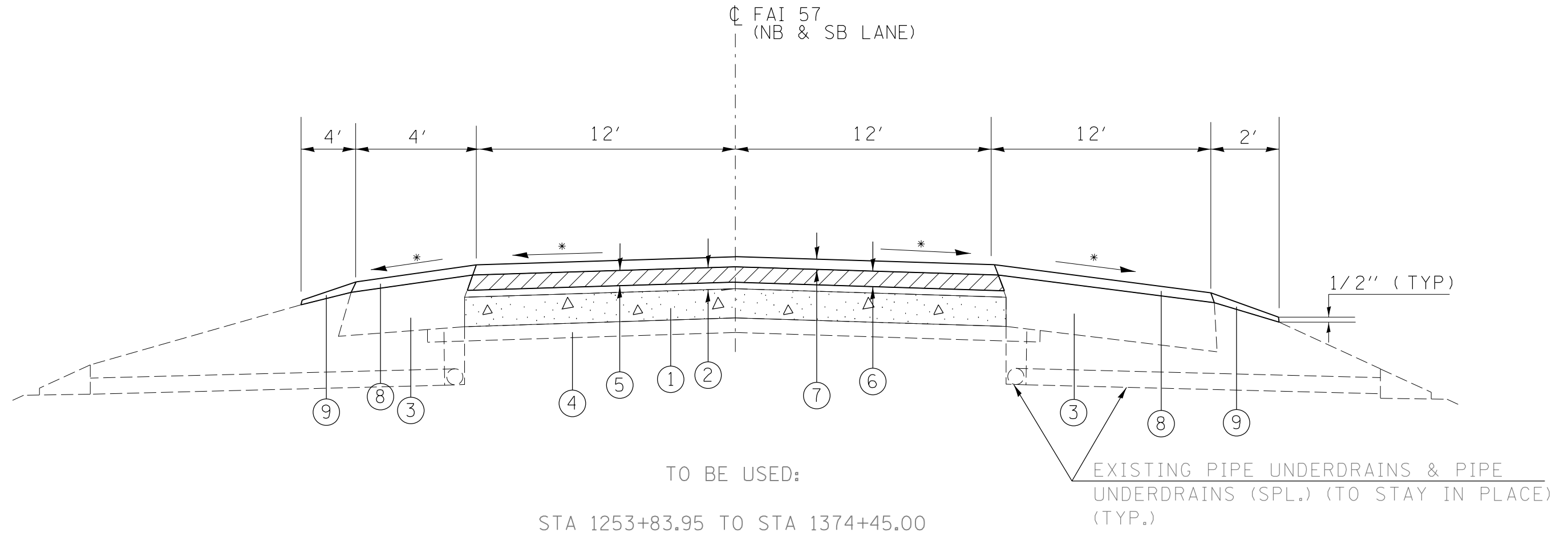
STA 1105+21.80 TO STA 1239+05.40
 STA 1240+59.32 TO STA 1251+71.87

* MATCH EXISTING SLOPE

- | | |
|--------------------------------------------|----------------------------------------------------|
| ① EXISTING CRC PAVEMENT 8" | ⑥ POLY. HMA BINDER COURSE, IL-19.0, N90, FG 2 1/4" |
| ② EXISTING BIT SURFACE AND BINDER (4 1/2") | ⑦ POLY. HMA SURFACE COURSE, MIX. E, N90, 1 1/2" |
| ③ EXISTING HMA OVERLAYED BAM SHOULDERS | ⑧ HMA SHOULDERS (2") |
| ④ EXISTING STABILIZED SUB-BASE (4") | ⑨ AGGREGATE WEDGE SHOULDERS, TY B |
| ⑤ HMA SURFACE REMOVAL, 1 3/4" | |

FILE NAME =	USER NAME = rolavr	DESIGNED -	REVISED -	STATE OF ILLINOIS DEPARTMENT OF TRANSPORTATION	TYPICAL SECTIONS				F.A.I. RTE.	SECTION	COUNTY	TOTAL SHEETS	SHEET NO.
pw:\IL\084EBIDINTEG.illinois.gov\PIDOT\Documents\IDOT Offices\District 9\Projects\78437\Drawings\CAD\Sheets\78437-shta-cvr-soq-15.dwg		DRAWN -	REVISED -		1-57	(41-4,41-4-1RS-2	JEFFERSON	26	10				
Default	PLOT SCALE = 100.0000' / in.	CHECKED -	REVISED -		CONTRACT NO. 78437								
	PLOT DATE = 7/9/2015	DATE -	REVISED -		ILLINOIS FED. AID PROJECT								

TYPICAL SECTION
 I-57 MAINLINE
 IN DIRECTION OF TRAFFIC
 (NOT TO SCALE)



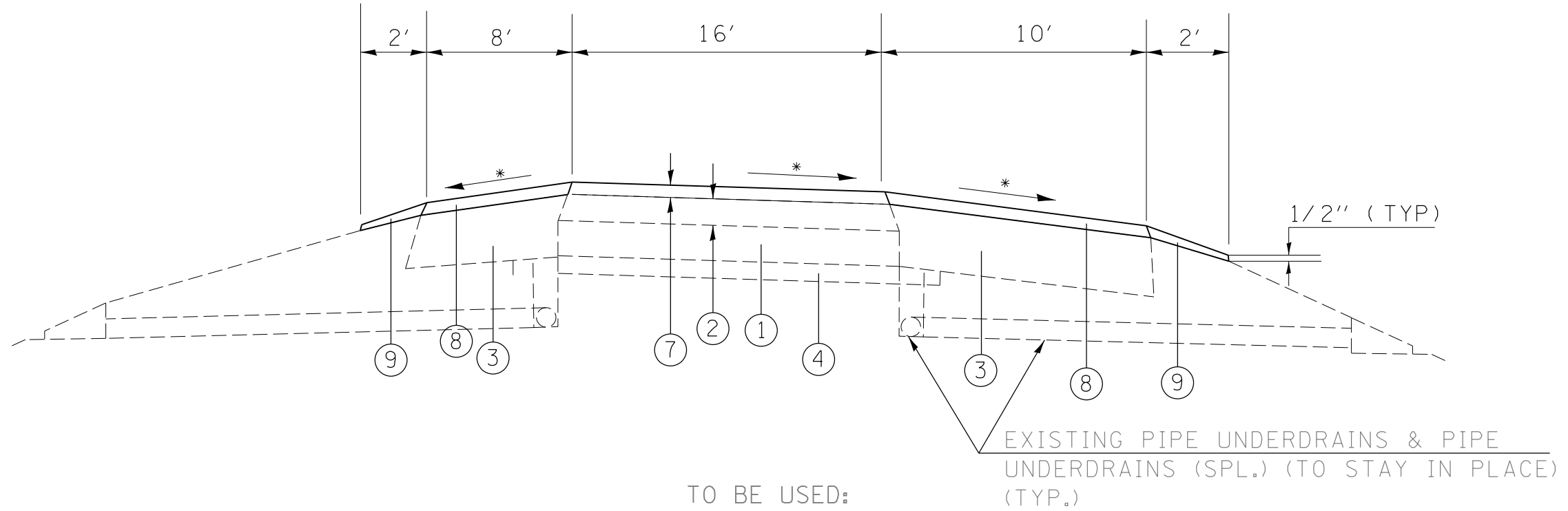
TO BE USED:
 STA 1253+83.95 TO STA 1374+45.00

* MATCH EXISTING SLOPE

- ① EXISTING CRC PAVEMENT 8"
- ② EXISTING BIT SURFACE AND BINDER (4 1/2")
- ③ EXISTING HMA OVERLAYED BAM SHOULDERS
- ④ EXISTING STABILIZED SUB-BASE (4")
- ⑤ HMA SURFACE REMOVAL, 1 3/4"
- ⑥ POLY. HMA BINDER COURSE, IL-19.0, N90, FG 2 1/4"
- ⑦ POLY. HMA SURFACE COURSE, MIX. E, N90, 1 1/2"
- ⑧ HMA SHOULDERS (2")
- ⑨ AGGREGATE WEDGE SHOULDERS, TY B

FILE NAME =	USER NAME = rolavr	DESIGNED -	REVISED -	STATE OF ILLINOIS DEPARTMENT OF TRANSPORTATION	TYPICAL SECTIONS			F.A.I. RTE.	SECTION	COUNTY	TOTAL SHEETS	SHEET NO.
pw:\IL\084EBIDINTEG.illinois.gov\PWIDOT\Documents\IDOT Offices\District 9\Projects\78437\Drawings\CAD\Drawings\78437-sha-cvr-soq.dwg		DRAWN -	REVISED -		1-57	(41-4,41-4-1RS-2	JEFFERSON	26	11			
Default	PLOT SCALE = 100.0000' / in.	CHECKED -	REVISED -		CONTRACT NO. 78437							
	PLOT DATE = 7/9/2015	DATE -	REVISED -		ILLINOIS FED. AID PROJECT							

TYPICAL SECTION
 I-57 ENTRANCE/EXIT RAMP AT DIX
 IN DIRECTION OF TRAFFIC
 (NOT TO SCALE)



TO BE USED:

- RAMP A STA 88+78.90 TO STA 117+69.93
- RAMP B STA 240+59.82 TO STA 263+84.70
- RAMP C STA 318+83.62 TO STA 338+78.30
- RAMP D STA 427+74.70 TO STA 447+41.44

* MATCH EXISTING SLOPE

- ① EXISTING PCC PAVEMENT 8"
- ② EXISTING HMA SURFACE
- ③ EXISTING STAB. SHOULDERS
- ④ EXISTING STABILIZED SUB-BASE 4"
- ⑤ EXISTING HMA SURFACE
- ⑥ POLY. HMA SURFACE COURSE, MIX. E, N90, 2"
- ⑦ POLY. HMA SURFACE COURSE, MIX. E, N90, 2"
- ⑧ HMA SHOULDERS (2")
- ⑨ AGGREGATE WEDGE SHOULDERS, TY B

FILE NAME =	USER NAME = rolavr	DESIGNED -	REVISED -	STATE OF ILLINOIS DEPARTMENT OF TRANSPORTATION	TYPICAL SECTIONS			F.A.I. RTE.	SECTION	COUNTY	TOTAL SHEETS	SHEET NO.	
pw:\IL\084EBIDINTEG.illinois.gov\PWIDOT\Documents\IDOT Offices\District 9\Projects\78437\Drawings\CADsheets\78437-shta-cvr-soq.dwg		DRAWN -	REVISED -		SCALE:	SHEET	OF	SHEETS	STA.	TO STA.	ILLINOIS FED. AID PROJECT		
Default		PLOT SCALE = 100.0000' / in.	CHECKED -		REVISED -								
		PLOT DATE = 7/9/2015	DATE -		REVISED -								

PAVEMENT RESURFACING SCHEDULE

			LENGTH (INFO ONLY)	POLY HMA BINDER COURSE	POLY HMA SURFACE COURSE	HMA SURF REM 1 3/4"	POLY BIT MATLS (PR COAT)	BIT MATLS (PRIME COAT)	TEMP RAMP	HMA SURF REM BUTT JT	HMA SHOULDERS	AGG WEDGE SHLDR, TY B	INCIDENTAL HMA SURFACING
STA	TO	STA	FEET	TON	TON	SQ YD	LB	LB	SY	SQ YD	TON	TON	TON
NB													
STA 1105+21.80	TO STA	1215+41.25	11019.5	3702.5	2468.4	29171.9	19835.0	11019.5	61.1	391.1	2742.6	348.6	40.8
EON STA 1215+41.25	BK = STA	1215+44.50											
STA 1215+44.50	TO STA	1238+93.67	2349.2	789.3	526.2	6041.9	4228.5	2349.2	140.5	569.3	584.7	74.3	
STA 1238+93.67	TO STA	1240+47.59											
STA 1240+47.59	TO STA	1251+30.97	1083.4	364.0	242.7	2503.3	1950.1	1083.4	237.9	876.3	269.6	34.3	
STA 1251+30.97	TO STA	1253+43.97											
STA 1253+43.97	TO STA	1374+45.00	12101.0	4065.9	2710.6	31558.3	21781.9	12101.0	157.3	711.1	2409.4	574.2	22.8
SB													
STA 1105+21.80	TO STA	1215+41.25	11019.5	3702.5	2468.4	29171.9	19835.0	11019.5	61.1	391.1	2742.6	348.6	
EON STA 1215+41.25	BK = STA	1215+44.50											
STA 1215+44.50	TO STA	1239+17.13	2372.6	797.2	531.5	6110.0	4270.7	2372.6	125.5	524.9	590.5	75.1	
STA 1239+17.13	TO STA	1240+71.05											
STA 1240+71.05	TO STA	1252+11.45	1140.4	383.2	255.4	2710.3	2052.7	1140.4	215.7	782.2	283.8	36.1	
STA 1252+11.45	TO STA	1254+24.45											
STA 1254+24.45	TO STA	1374+45.00	12020.6	4038.9	2692.6	31343.7	21637.0	12020.6	157.2	711.1	2393.4	570.4	
RAMPS													
A STA 88+78.90	TO STA	117+69.93	2891.0		510.9		2052.7		26.4	302.2	647.6	146.3	
B STA 240+59.82	TO STA	263+84.70	2324.9		427.3		1716.9		26.4	302.2	520.8	117.7	
C STA 318+83.62	TO STA	338+78.30	1994.7		364.6		1465.0		26.4	302.2	446.8	101.0	
D STA 427+74.70	TO STA	447+41.44	1966.7		307.8		1236.5		26.4	302.2	440.5	99.6	
TOTALS					17844	13506	138611	102062	1262	6166	14073	2526	64

*INCLUDES QUANTITIES OF HMA SURF REM 1 3/4", TEMP RAMP & HMA SURF REM BUTT JT FOR RAMP PAVEMENT AREA THAT CROSSES STR #041-0014 & 0015

GUARDRAIL SCHEDULE

LT OR RT*	LOCATION STATION TO STATION			GUARDRAIL REMOVAL	SPBGR TYPE A	TRAFFIC BARRIER TERMINAL				CONC CURB TY B 6"	BRIDGE HANDRAIL REMOVAL	CONC SUPER	REINF BARS EPOXY	GUARD-RAIL MRKR	TERM MRKR DIRECT APPLIED	COMMENTS
						TY 1, SPL (TAN)	TY 2	TY 6	TY 6B							
	FOOT	FOOT	EACH	EACH	EACH	EACH	FOOT	FOOT	CU YD	POUNDS	EACH	EACH				
	STA.	TO	STA.													
SOUTHBOUND I57 "A"																
RT	1157+97.50	TO	1160+33.77	120.5	137.5	1		1		15.0				4	1	APPROACH, PIER
RT	1238+45.63	TO	1239+24.57	78.3	50.0			1			16.0	0.49	134.6	4		STR #041-0015, SW CORNER, DEPARTURE
LT	1240+64.93	TO	1243+36.20	179.0	175.0	1					16.0	0.49	134.6	4	1	STR #041-0015, NE CORNER, APPROACH
RT	1240+74.57	TO	1247+20.84	646.3	600.0						16.0	0.49	134.6	8		STR #041-0015, NW CORNER, APPROACH, TIE INTO STR #041-0017
RT	1247+20.84	TO	1252+32.77	511.9	495.5						16.0	0.49	134.6	6		STR #041-0017, SW CORNER, DEPARTURE, TIE INTO STR #041-0015
LT	1254+06.54	TO	1257+27.81	224.5	225.0	1					16.0	0.49	134.6	4	1	STR #041-0017, NE CORNER, APPROACH
RT	1254+40.77	TO	1256+99.54	260.3	162.5	1					16.0	0.49	134.6	4	1	STR #041-0017, NW CORNER, APPROACH
RT	1268+07.50	TO	1270+68.77	144.0	162.5	1		1		15.0				4	1	APPROACH, PIER
RT	1318+07.73	TO	1324+12.63	603.1	537.5	1	1							8	1	CULVERT
RT	1373+12.50	TO	1376+98.77	374.4	287.5	1		1		15.0				5	1	APPROACH, PIER
TOTAL SB LANES				3142.3	2,833.0	7	2	3	6	45	96	2.94	808	51	7	
NORTHBOUND I57 "B"																
RT	1155+36.23	TO	1157+72.50	120.5	137.5	1		1		15				4	1	APPROACH, PIER
LT	1236+25.73	TO	1238+97.00	179.5	175.0	1					16	0.49	134.6	4	1	STR #041-0014, SW CORNER, APPROACH
RT	1236+34.23	TO	1238+93.00	84.2	162.5	1					16	0.49	134.6	4	1	STR #041-0014, SE CORNER, APPROACH
RT	1240+44.25	TO	1244+71.42	428.9	412.5						16	0.49	134.6	5		STR #041-0014, NE CORNER, DEPARTURE, TIE INTO STR #041-0016
RT	1244+71.42	TO	1251+21.00	649.6	603.3						16	0.49	134.6	8		STR #041-0016, SE CORNER, APPROACH, TIE INTO STR #041-0014
LT	1248+69.73	TO	1251+41.00	181.3	175.0	1					16	0.49	134.6	4	1	STR #041-0016, SW CORNER, APPROACH
RT	1253+29.00	TO	1257+07.94	372.5	350.0			1			16	0.49	134.6	5		STR #041-0016, NE CORNER, DEPARTURE
RT	1264+99.73	TO	1267+61.00	131.5	162.5	1		1		15				4	1	APPROACH, PIER
RT	1320+42.38	TO	1323+72.27	302.2	262.5	1	1							4	1	CULVERT
RT	1369+12.23	TO	1372+98.50	373.2	287.5	1		1		15				5	1	APPROACH, PIER
TOTAL NB LANES				2823.4	2728.3	7	2	3	6	45	96	3	808	47	7	
TOTAL =				5965.7	5561.3	14.0	4.0	6.0	12.0	90.0	192.0	5.9	1615.2	97.9	14.0	

*RIGHT OR LEFT IS BASED ON DIRECTION OF TRAVEL

PAVEMENT MARKING SCHEDULE

STA	TO	STA	THERMOPLASTIC				PREFORMED PLASTIC	SHORT TERM PVMT MARK	TEMP PVMT MARK 4"	TEMP PVMT MARK 8"	TEMP PVMT MARK 24"*	WORK ZONE PVT MK REM SQ FT	RAISED REFL PVT MARK EACH	RAISED REFL PVT MKR REM EACH	DELINEATORS EACH	SHLDR RUMBLE STRIPS 16" FT
			LINE - 4"		LINE - 8"	LINE-24"	LINE - 6"									
			WHITE SOLID FT	YELLOW SOLID FT	WHITE SOLID FT	WHITE SOLID* FT	WHITE SKIP FT									
NB																
STA 105+21.80	TO STA	1215+41.25	11020	11020		18	2755	3967	22040		18	8706	138	138	28	22039
EON STA 215+41.25	BK=STA	1215+44.50 AH														
STA 215+44.50	TO STA	1238+93.67	1381	2350	403		587	846	3731	403		1795	30	30	3	3731
STA 238+93.67	TO STA	1240+47.59 GAP														
STA 240+47.59	TO STA	1251+30.97	1084	1084			271	390	2168			853	14	14	3	2167
STA 251+30.97	TO STA	1253+43.97 GAP														
STA 253+43.97	TO STA	1374+45.00	12102	12102			3025	4356	24204			9521	152	152	30	24202
SB																
STA 105+21.80	TO STA	1215+41.25	11020	11020		18	2755	3967	22040		18	8706	138	138	28	22039
EON STA 215+41.25	BK=STA	1215+44.50 AH														
STA 215+44.50	TO STA	1239+17.13	816	2373	383		593	854	3189	383		1604	30	30	2	3189
STA 239+17.13	TO STA	1240+71.05 GAP														
STA 240+71.05	TO STA	1252+11.45	1141	1141			285	411	2282			898	15	15	3	2281
STA 252+11.45	TO STA	1254+24.45 GAP														
STA 254+24.45	TO STA	1374+45.00	12021	12021			3005	4327	24042			9457	151	151	30	24041
RAMPS																
STA 88+78.90	TO STA	117+69.93 A	2892	1784	145		70	215	4676	145		1727			28	
STA 240+59.82	TO STA	263+84.70 B	2325	1692	383			161	4017	383		1648	61	61	27	
STA 318+83.62	TO STA	338+78.30 C	1995	1303	404			132	3298	404		1413	65	65	20	
STA 427+74.70	TO STA	447+41.44 D	1967	904	100		39	130	2871	100		1068			21	
RURAL TOTALS			59764	58794	1818	36	13386	19756	118558	1818	36	47396	794	794	222	103689
			118558													

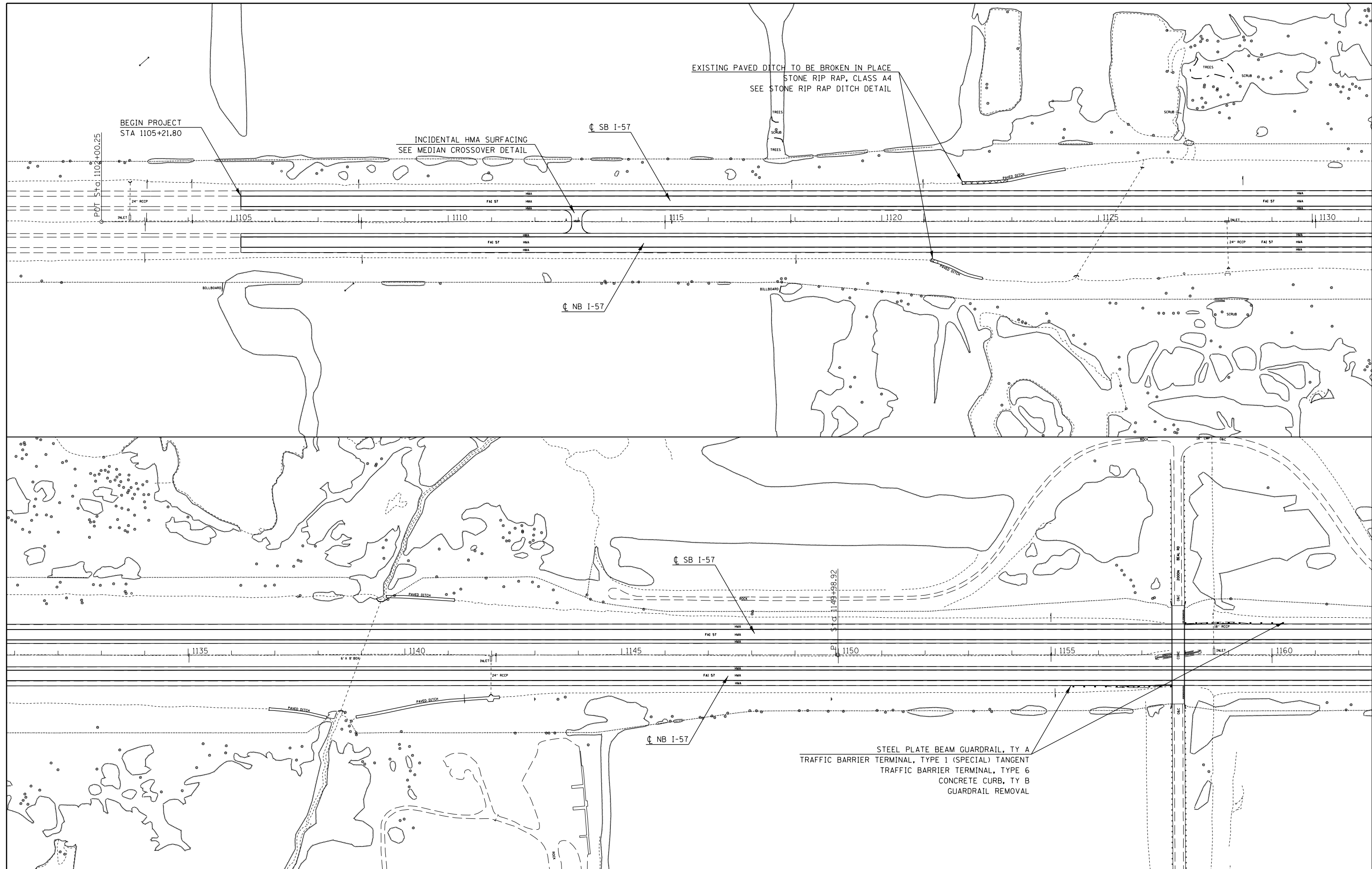
*STATE POLICE SPEED MEASUREMENTS MUST BE PLACED EXACT LOCATION OF THE EXISTING MARKINGS

PAVED DITCH REMOVAL SCHEDULE

LOCATION			ACTUAL LENGTH TO BE BROKEN IN PLACE	STONE RIPRAP, CLASS A4	SEEDING, CLASS 2	SEEDING, CLASS 7	NITROGEN	PHOSPHORUS	POTASSIUM	AG GROUND LIMESTONE	MULCH, METHOD 2	TEMP EROSION CONT SEED	
	LT/RT		FEET	TON	ACRE	ACRE	POUND	POUND	POUND	TON	ACRE	POUND	
1121+14	TO	1121+29	RT	15	8.3	0.02	0.02	3.60	1.80	1.80	0.04	0.04	6.00
1121+85	TO	1122+90	LT	105	58.3	0.07	0.07	13.02	6.51	6.51	0.14	0.14	21.69
1210+74	TO	1210+92	RT	19	10.6	0.02	0.02	3.60	1.80	1.80	0.04	0.04	6.00
1213+44	TO	1213+81	RT	38	21.1	0.03	0.03	4.71	2.36	2.36	0.05	0.05	7.85
1215+95	TO	1216+56	LT	63	35.0	0.04	0.04	7.81	3.90	3.90	0.09	0.09	13.02
1267+82	TO	1268+41	RT	62	34.4	0.04	0.04	7.69	3.84	3.84	0.09	0.09	12.81
1270+81	TO	1271+42	LT	61	33.9	0.04	0.04	7.56	3.78	3.78	0.08	0.08	12.60
1272+59	TO	1273+74	RT	117	65.0	0.08	0.08	14.50	7.25	7.25	0.16	0.16	24.17
1302+78	TO	1303+34	LT	57	31.7	0.04	0.04	7.07	3.53	3.53	0.08	0.08	11.78
1304+35	TO	1307+11	RT	276	153.3	0.20	0.20	36.00	18.00	18.00	0.40	0.40	60.00
1325+36	TO	1326+19	RT	82	45.6	0.06	0.06	10.17	5.08	5.08	0.11	0.11	16.94
1344+44	TO	1345+13	RT	69	38.3	0.05	0.05	8.55	4.28	4.28	0.10	0.10	14.26
		RAMP B	LT	76	42.2	0.05	0.05	9.42	4.71	4.71	0.10	0.10	15.70
PROJECT TOTALS				577.8	0.75	0.75	134.0	67.0	67.0	1.5	1.5	222.9	

RODENT SHEILD SCHEDULE

				RODENT SHEILDS	
STA TO STA			EACH		
			MEDIAN SHLDR	OUTSIDE SHLDR	
NB					
STA 1105+21.80	TO STA	1215+41.25	19	7	
EQN STA 1215+41.25	BK = STA	1215+44.50			
STA 1215+44.50	TO STA	1238+93.67	5	5	
STA 1238+93.67	TO STA	1240+47.59			
STA 1240+47.59	TO STA	1251+30.97	2	1	
STA 1251+30.97	TO STA	1253+43.97			
STA 1253+43.97	TO STA	1374+45.00	15	8	
SB					
STA 1105+21.80	TO STA	1215+41.25	14	7	
EQN STA 1215+41.25	BK = STA	1215+44.50			
STA 1215+44.50	TO STA	1239+17.13	5	2	
STA 1239+17.13	TO STA	1240+71.05			
STA 1240+71.05	TO STA	1252+11.45	1	1	
STA 1252+11.45	TO STA	1254+24.45			
STA 1254+24.45	TO STA	1374+45.00	19	12	
RAMPS					
A STA 88+78.90	TO STA	117+69.93	1	1	
B STA 240+59.82	TO STA	263+84.70	1		
C STA 318+83.62	TO STA	338+78.30		1	
D STA 427+74.70	TO STA	447+41.44	1	1	
TOTAL			129		



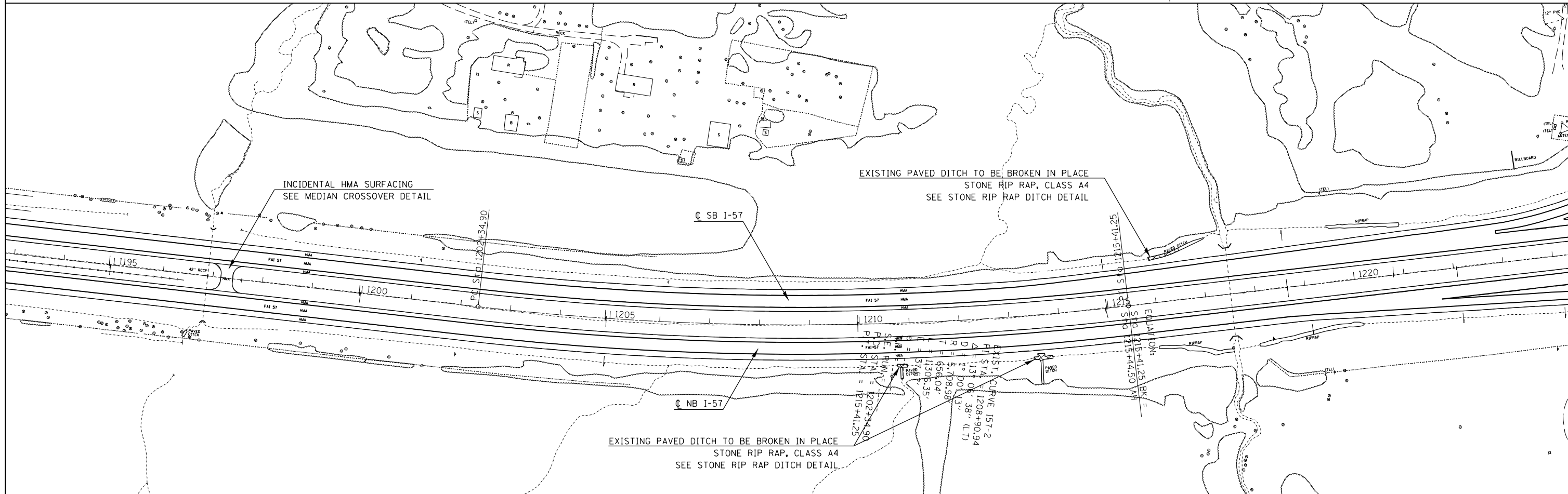
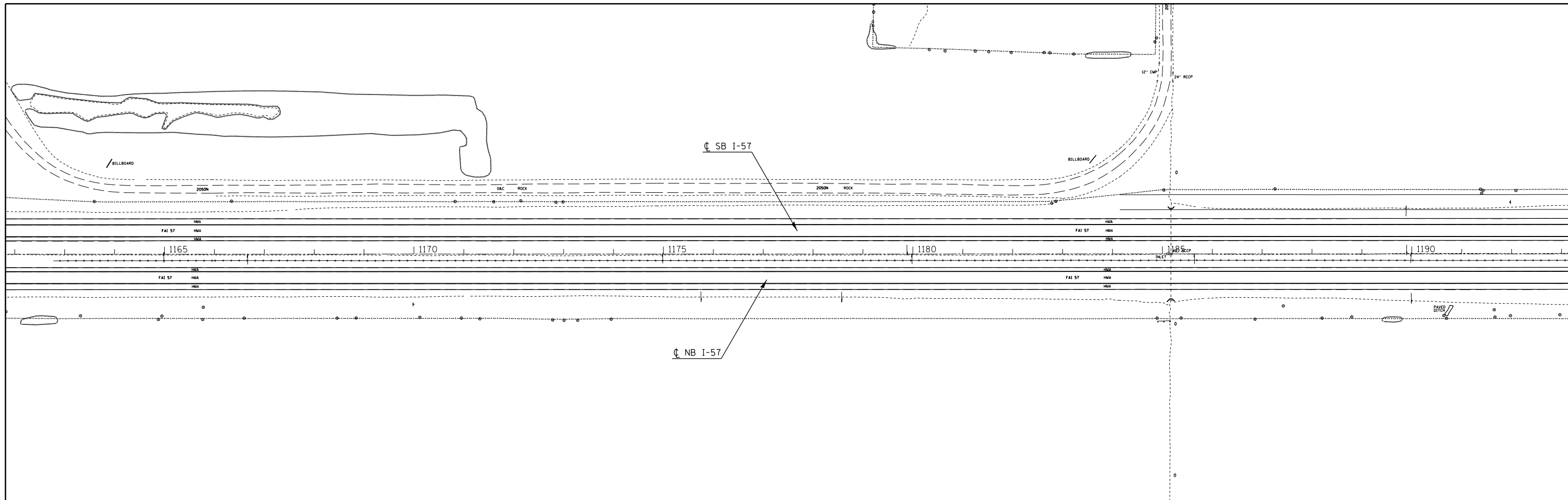
FILE NAME =	USER NAME = rollav	DESIGNED -	REVISED -
pw\1\084EBIDINTEG\illinois.gov\PI\DOT\Documents\IDOT Offices\District 9\Projects\78437\Drawings\CAD\Drawings\78437-sht-pln1.dgn		DRAWN -	REVISED -
Default	PLOT SCALE = 200.0000' / in.	CHECKED -	REVISED -
	PLOT DATE = 7/9/2015	DATE -	REVISED -

**STATE OF ILLINOIS
DEPARTMENT OF TRANSPORTATION**

PLAN I-57
STA 1105+21.80 TO STA 1162+00

SCALE: SHEET OF SHEETS STA. TO STA.

F.A.I. RTE.	SECTION	COUNTY	TOTAL SHEETS	SHEET NO.
I-57	(41-4,41-4-1)RS-2	JEFFERSON	26	17
CONTRACT NO. 78437				
ILLINOIS FED. AID PROJECT				



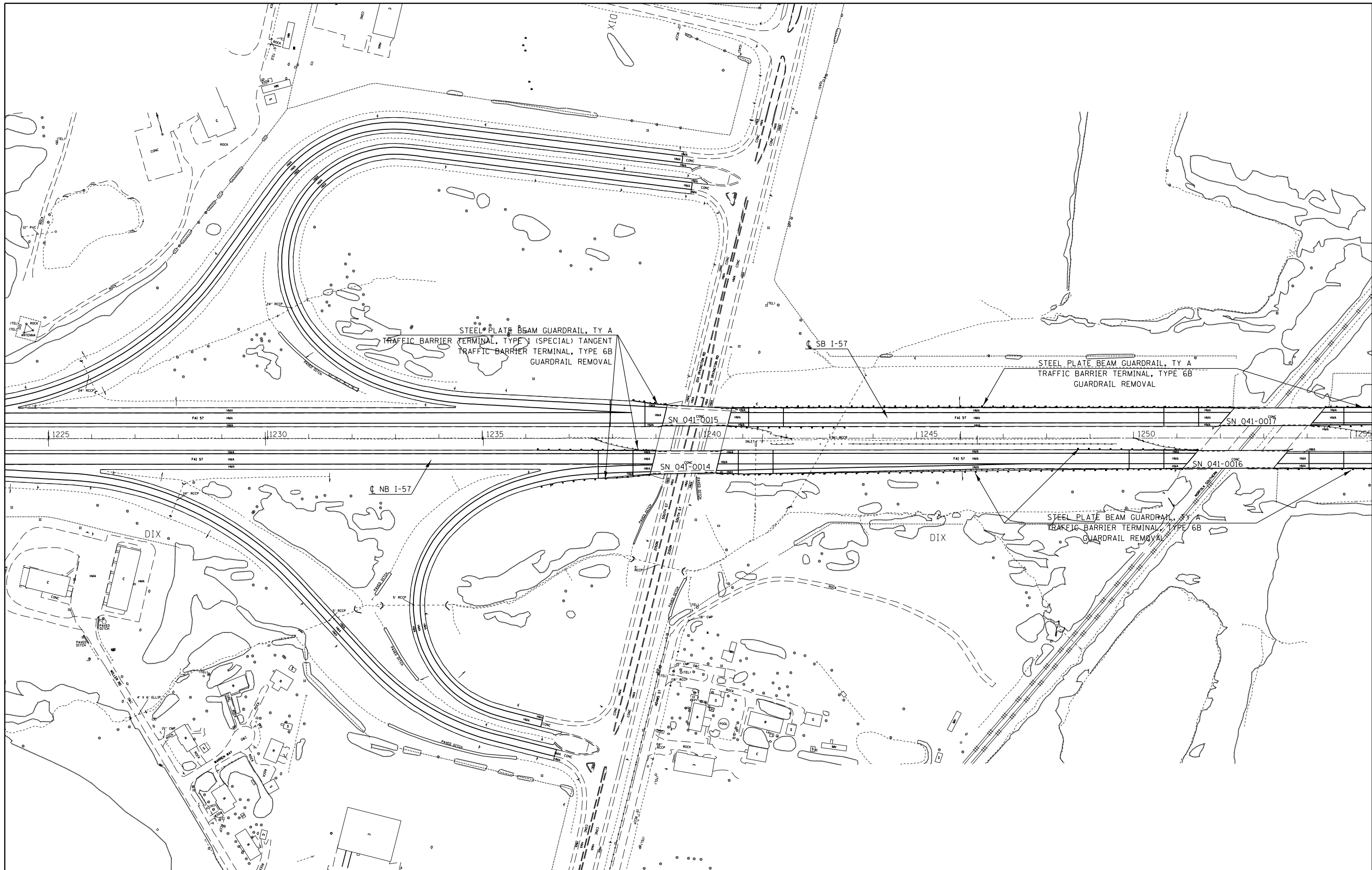
FILE NAME =	USER NAME = rollavr	DESIGNED -	REVISED -
p:\11084EBIDINTEG.illinois.gov\PI\DOT\Documents\IDOT Offices\District 9\Projects\78437\Drawings\CAD\Sheets\78437-shtc-pln1.dgn		DRAWN -	REVISED -
	PLOT SCALE = 200.0000' / in.	CHECKED -	REVISED -
Default	PLOT DATE = 7/9/2015	DATE -	REVISED -

**STATE OF ILLINOIS
DEPARTMENT OF TRANSPORTATION**

**PLAN I-57
STA 1162+00 TO STA 1224+00**

SCALE: SHEET OF SHEETS STA. TO STA.

F.A.I. RTE.	SECTION	COUNTY	TOTAL SHEETS	SHEET NO.
I-57	(41-4,41-4-1)RS-2	JEFFERSON	26	18
CONTRACT NO. 78437			ILLINOIS FED. AID PROJECT	



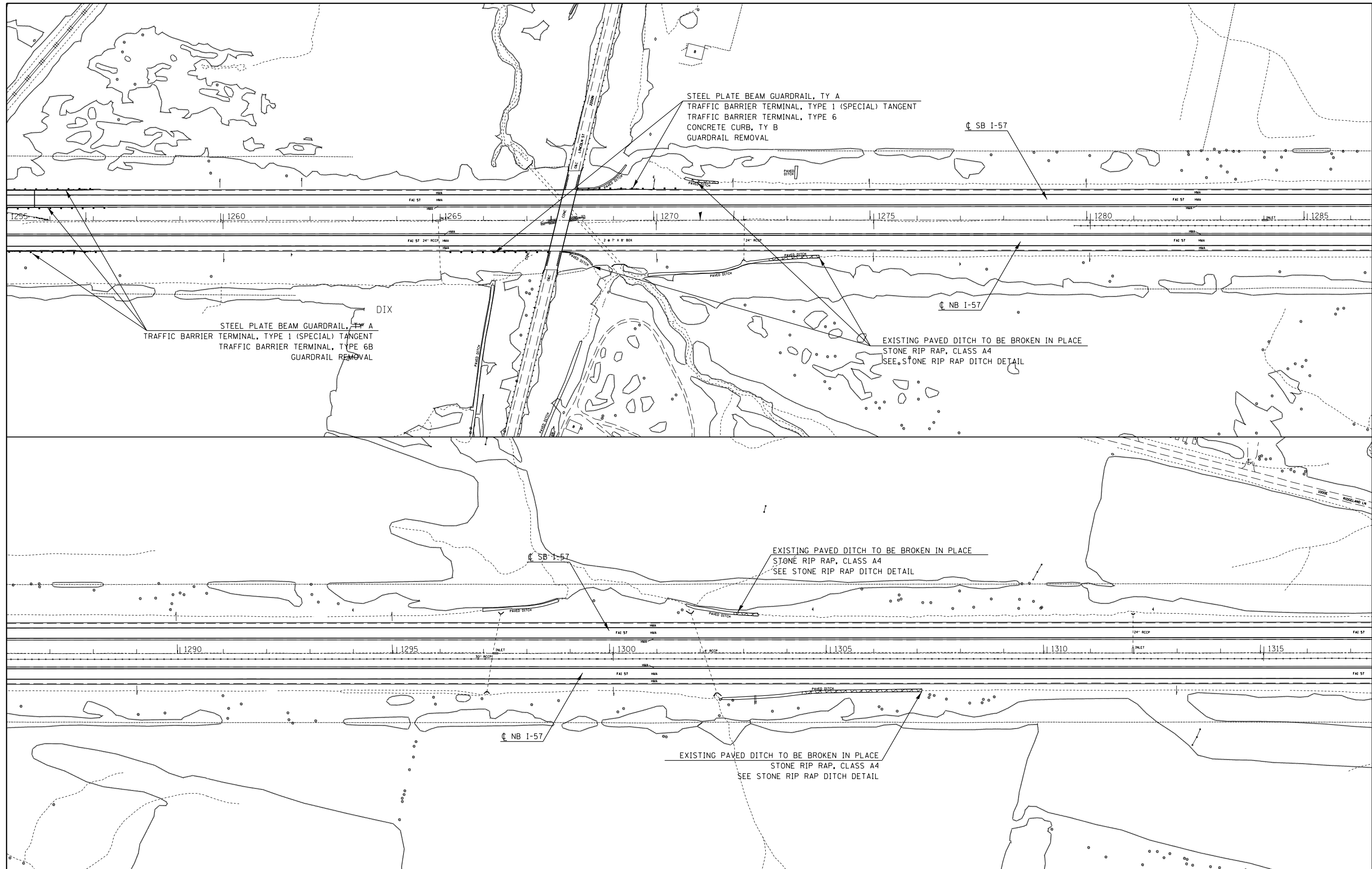
FILE NAME =	USER NAME = rollav	DESIGNED -	REVISED -
p:\1\084EBIDINTEG.illinois.gov\PIWIDOT\Documents\IDOT Offices\District 9\Projects\78437\Drawings\CAD\Drawings\78437-sht-pln1.dgn		DRWN -	REVISED -
Default	PLOT SCALE = 200.0000' / in.	CHECKED -	REVISED -
	PLOT DATE = 7/9/2015	DATE -	REVISED -

**STATE OF ILLINOIS
DEPARTMENT OF TRANSPORTATION**

**PLAN I-57
STA 1224+00 TO STA 1255+00**

SCALE: SHEET OF SHEETS STA. TO STA.

F.A.I. RTE.	SECTION	COUNTY	TOTAL SHEETS	SHEET NO.
I-57	(41-4,41-4-1)RS-2	JEFFERSON	26	19
			CONTRACT NO. 78437	
ILLINOIS FED. AID PROJECT				



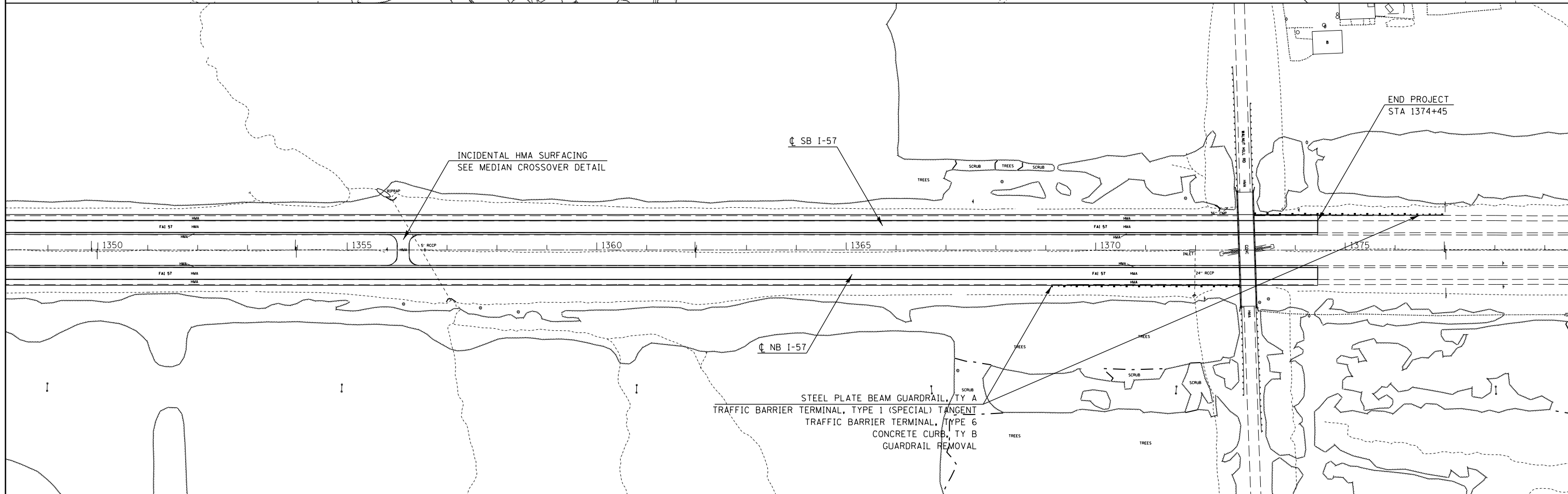
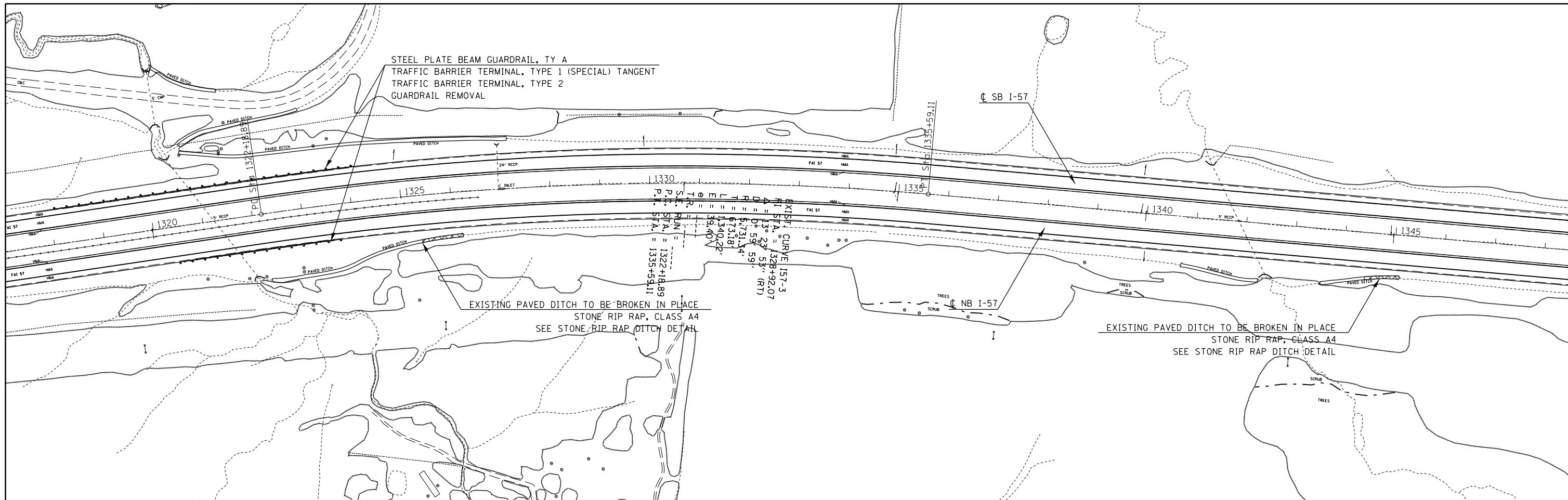
FILE NAME =	USER NAME = rollav	DESIGNED -	REVISED -
p:\11\084EBIDINTEG\Illinois.gov\PIWIDOT\Documents\IDOT Offices\District 9\Projects\78437\CAD\Drawings\78437-shc-pln.dgn		DRAWN -	REVISED -
Default	PLOT SCALE = 200.0000' / in.	CHECKED -	REVISED -
	PLOT DATE = 7/9/2015	DATE -	REVISED -

**STATE OF ILLINOIS
DEPARTMENT OF TRANSPORTATION**

**PLAN I-57
STA 1255+00 TO STA 1317+00**

SCALE: SHEET OF SHEETS STA. TO STA.

F.A.I. RTE.	SECTION	COUNTY	TOTAL SHEETS	SHEET NO.
I-57	(41-4,41-4-1)RS-2	JEFFERSON	26	20
ILLINOIS FED. AID PROJECT			CONTRACT NO. 78437	



FILE NAME =	USER NAME = rollav	DESIGNED -	REVISED -
pw\11084EBIDINTEG.illinois.gov\PWIDOT\Documents\IDOT Offices\District 9\Projects\78437\CAD\Drawings\78437-sht-pln1.dgn		REVISION	REVISED -
		CHECKED -	REVISED -
Default	PLOT DATE = 7/9/2015	DATE -	REVISED -

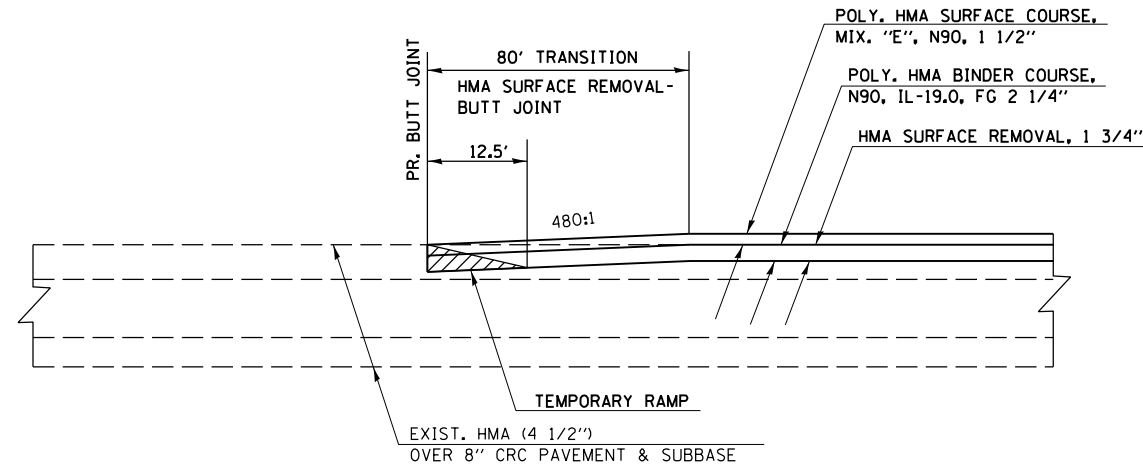
**STATE OF ILLINOIS
DEPARTMENT OF TRANSPORTATION**

**PLAN I-57
STA 1317+00 TO STA 1374+45**

SCALE: SHEET OF SHEETS STA. TO STA.

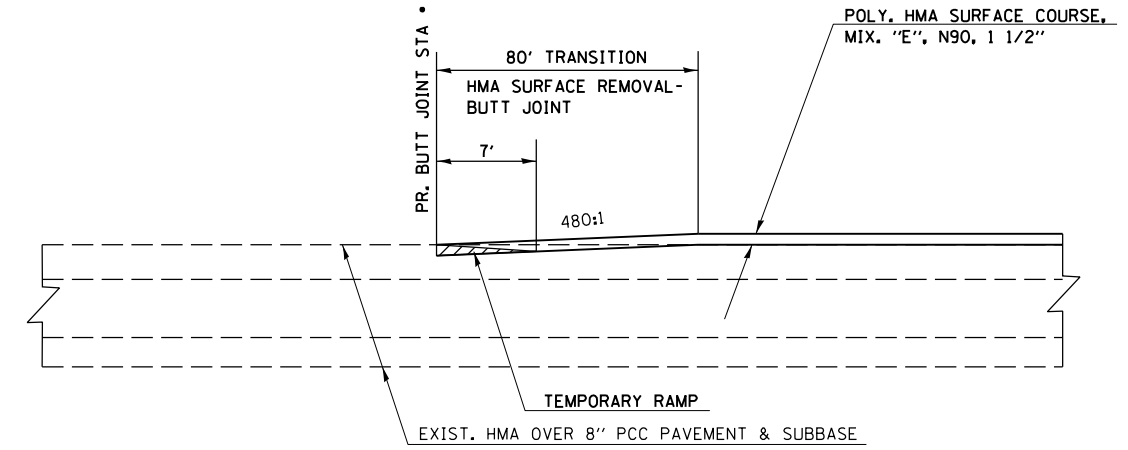
F.A.I. R.T.E.	SECTION	COUNTY	TOTAL SHEETS	SHEET NO.
I-57	(41-4,41-4-1)RS-2	JEFFERSON	26	21
CONTRACT NO. 78437				
ILLINOIS FED. AID PROJECT				

DETAIL FOR BUTT JOINTS AT
BEGINNING AND ENDING OF PROJECT



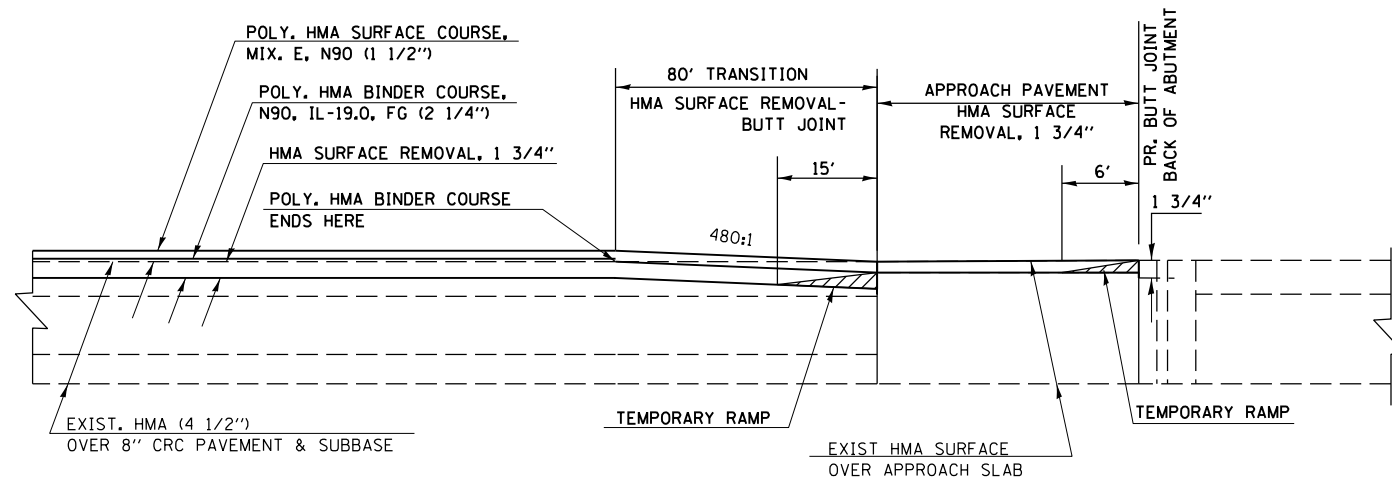
TO BE USED:
STA 1105+21.80 TO STA 1106+01.80 (BEGINNING OF JOB)
STA 1373+65.00 TO STA 1374+45.00 (END OF JOB)

DETAIL FOR BUTT JOINTS AT
END OF RAMPS A, B, C, D



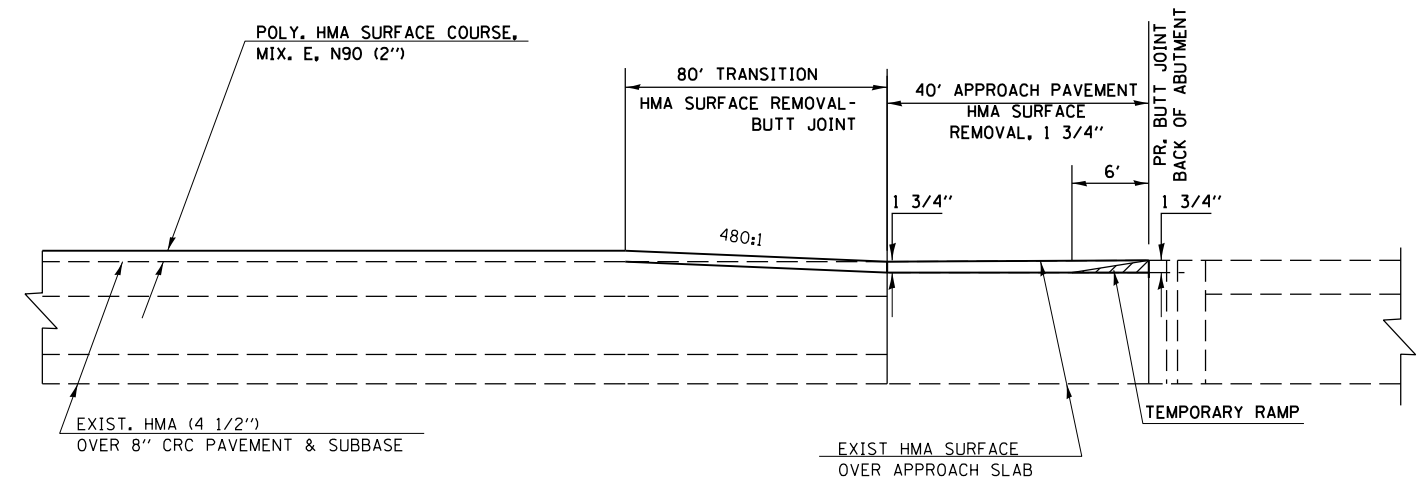
• TO BE USED:
RAMP A STA 88+78.90
RAMP B STA 263+84.70
RAMP C STA 338+78.30
RAMP D STA 427+74.70

DETAIL FOR BUTT JOINTS
AT STRUCTURES (MAINLINE)



TO BE USED AT
NORTHBOUND AND SOUTHBOUND APPROACHES:
SN 041-0014 & SN 041-0015
SN 041-0016 & SN 041-0017

DETAIL FOR BUTT JOINTS
AT STRUCTURES (RAMPS)



TO BE USED AT
NORTHBOUND AND SOUTHBOUND APPROACHES:
SN 041-0014 & SN 041-0015
SN 041-0016 & SN 041-0017

FILE NAME =	USER NAME = rollav	DESIGNED -	REVISED -
p:\IL\084EBID\INTEG\illinois.gov\PIWID\Documents\IDOT Offices\District 9\Projects\78437\CAD\Drawings\78437-sht-cvr-soq.dwg		DRAWN -	REVISED -
Default	PLOT SCALE = 200.0000' / in.	CHECKED -	REVISED -
	PLOT DATE = 7/9/2015	DATE -	REVISED -

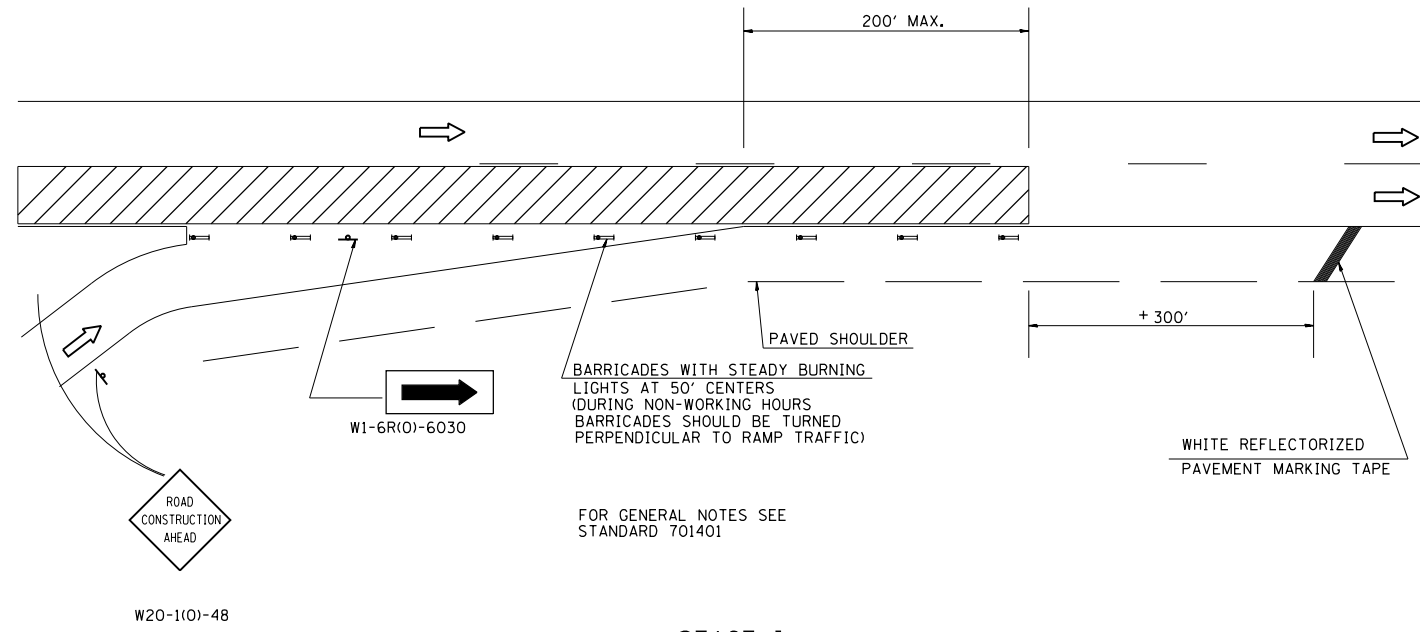
STATE OF ILLINOIS
DEPARTMENT OF TRANSPORTATION

MEDIAN CROSSOVER &
BUTT JOINT DETAILS

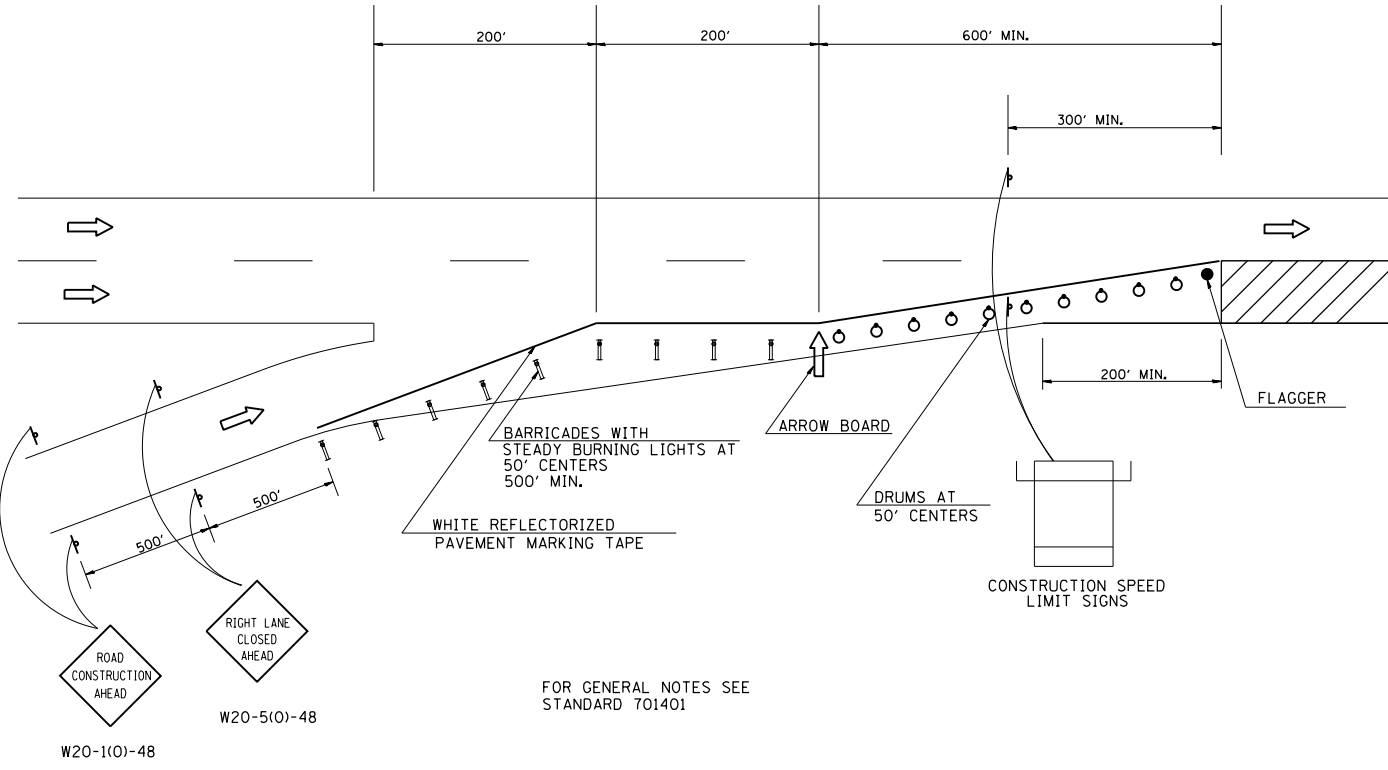
SCALE: SHEET OF SHEETS STA. TO STA.

F.A.I. RTE.	SECTION	COUNTY	TOTAL SHEETS	SHEET NO.
1-57	(41-4,41-4-1)RS-2	JEFFERSON	26	22
ILLINOIS FED. AID PROJECT			CONTRACT NO. 78437	

DETAIL OF TRAFFIC CONTROL AT ENTRANCE RAMP

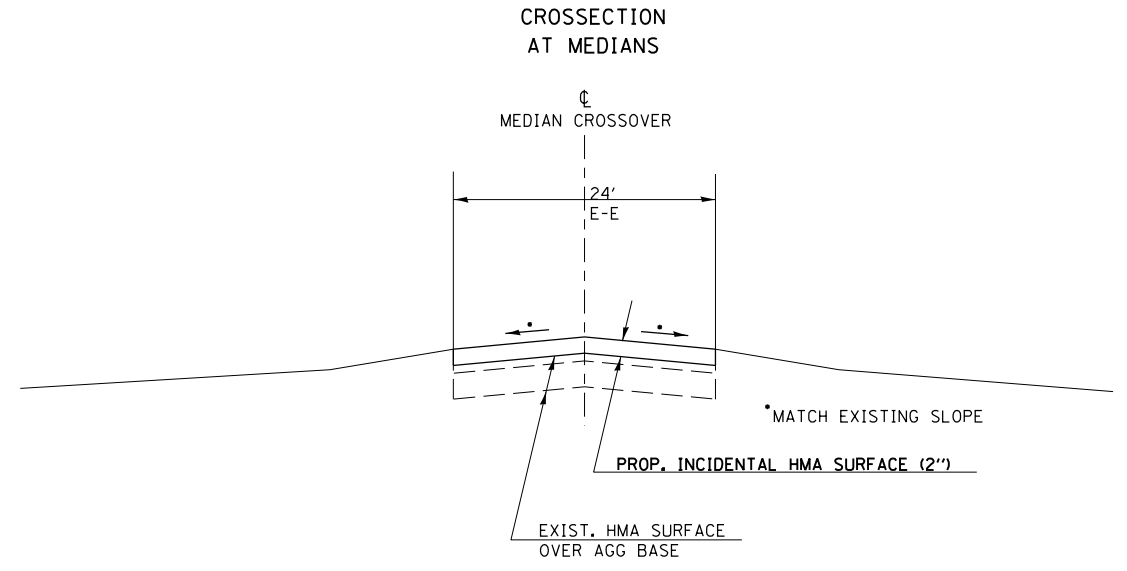


STAGE I
RIGHT LANE CLOSURE PERMITTED AT
ENTRANCE RAMP

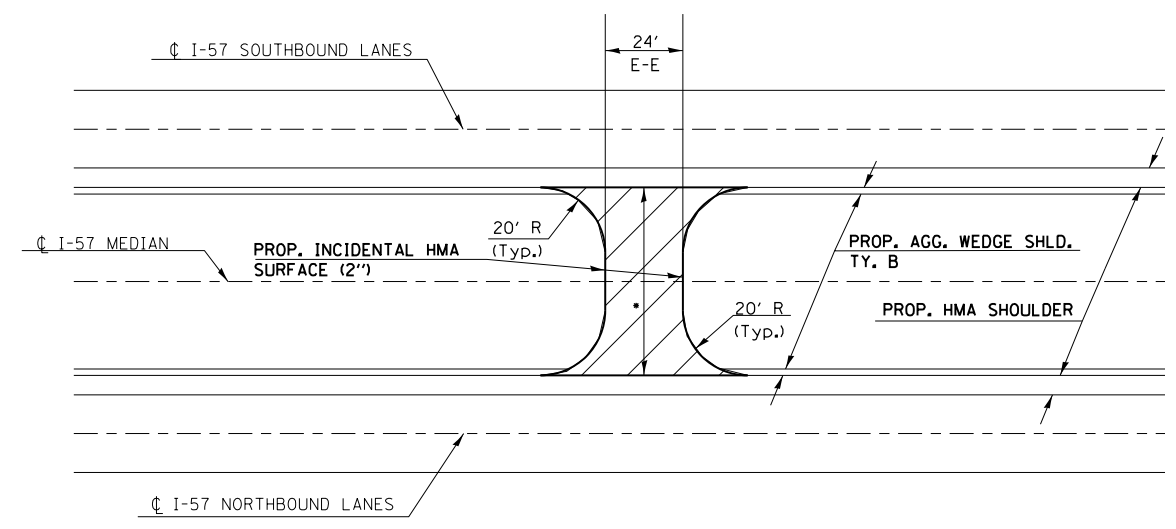


STAGE II
RIGHT LANE CLOSURE PERMITTED
200' BEYOND ENTRANCE RAMP

DETAILS FOR
MEDIAN CROSSOVERS



PLAN VIEW
AT MEDIANS



TO BE USED:
STA 1112+95 (•54')
STA 1197+25 (•54')
STA 1356+10 (•62')

FILE NAME =	USER NAME = rollav	DESIGNED -	REVISED -
pw:\IL\084EBIDINTEG.illinois.gov\PIDOT\Documents\IDOT Offices\District 9\Projects\78437\CAD\Drawings\78437-sha-cvr-soq.dwg		DRAWN -	REVISED -
Default	PLOT SCALE = 200.0000' / in.	CHECKED -	REVISED -
	PLOT DATE = 7/9/2015	DATE -	REVISED -

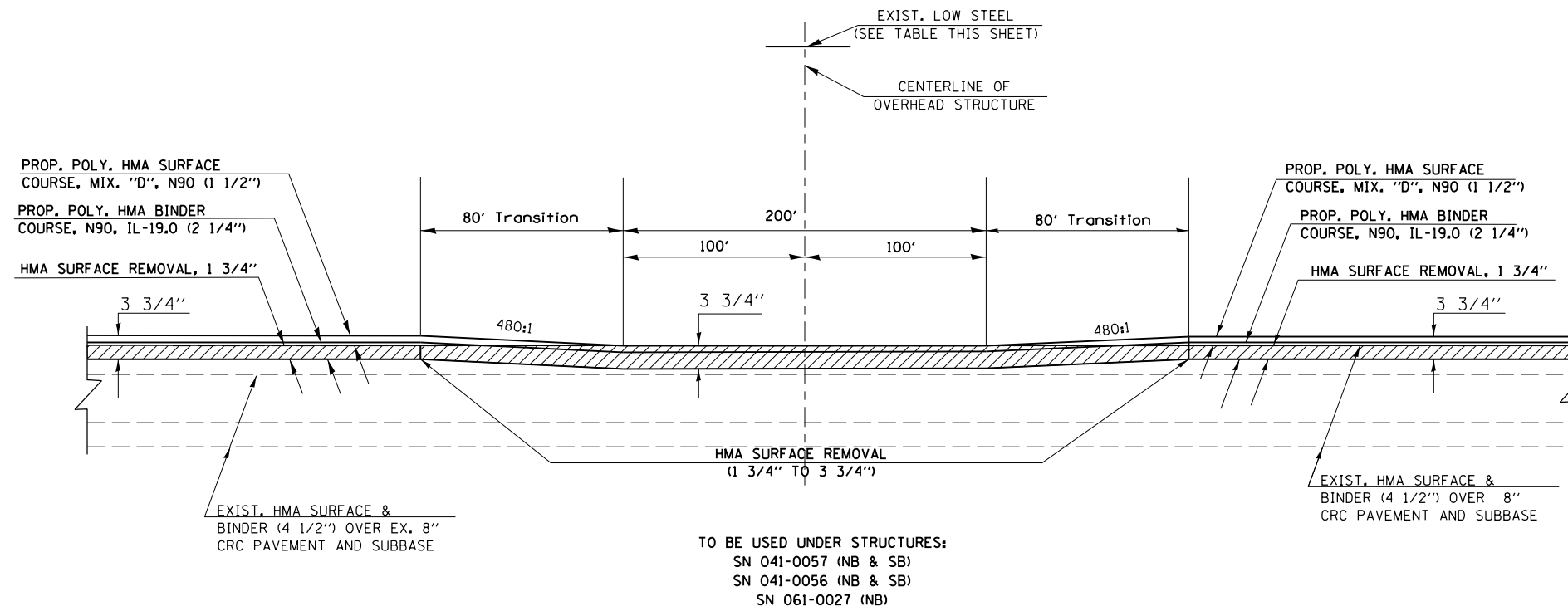
STATE OF ILLINOIS
DEPARTMENT OF TRANSPORTATION

MEDIAN CROSSOVER &
BUTT JOINT DETAILS

SCALE:	SHEET	OF	SHEETS	STA.	TO	STA.
--------	-------	----	--------	------	----	------

F.A.I. RTE.	SECTION	COUNTY	TOTAL SHEETS	SHEET NO.
I-57	(41-4,41-4-1)RS-2	JEFFERSON	26	23
ILLINOIS FED. AID PROJECT			CONTRACT NO. 78437	

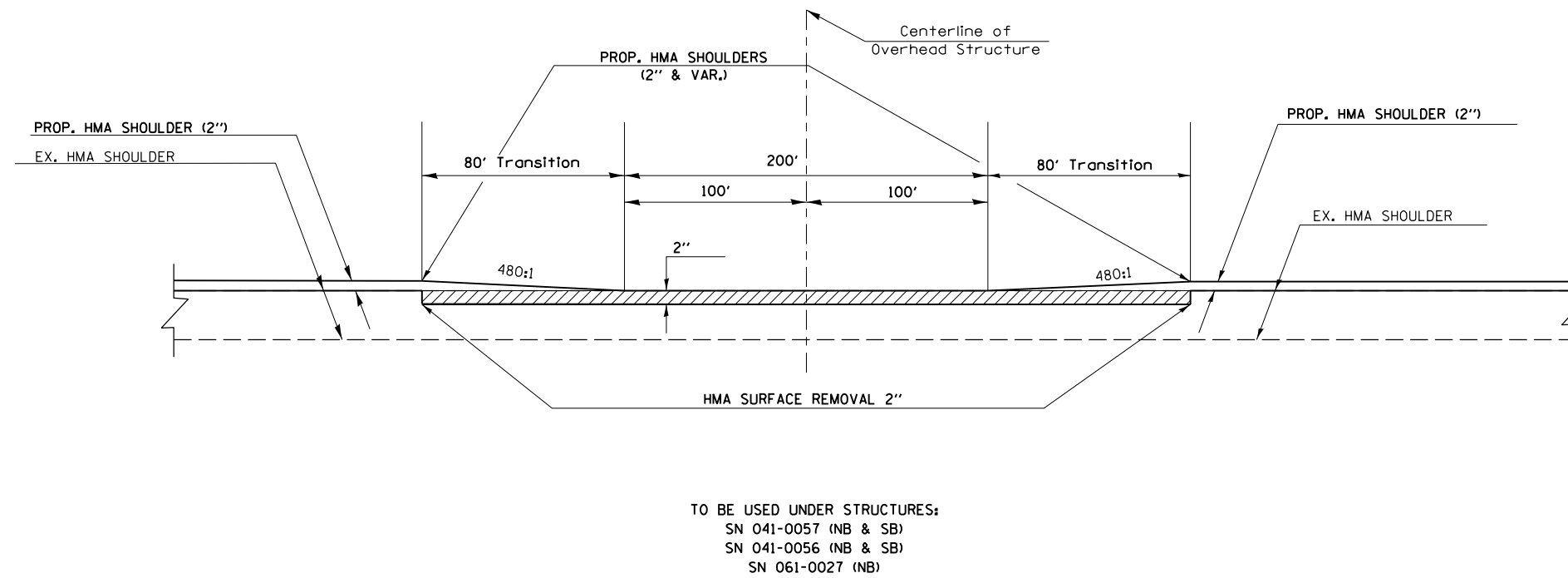
**DETAIL FOR HMA TRANSITION
UNDER OVERPASSES
(TO MAINTAIN VERTICAL CLEARANCE)**



**EXIST. OVERPASS STRUCTURE
CLEARANCE HEIGHTS**

STRUCTURE NO.	EX. CLEARANCE HEIGHT	
	NBL	SBL
041-0057	16.07'	16.03
041-0056	16.04'	16.25
061-0027	16.08'	16.65

**DETAIL OF PROPOSED SHOULDER
TREATMENT UNDER OVERPASSES**



FILE NAME =	USER NAME = rollav	DESIGNED -	REVISED -
p:\IL\084EBIDINTEG.illinois.gov\PIWIDOT\Documents\DOT Offices\District 9\Projects\78437\Drawings\CADsheets\78437-sha-cr-soq.dwg		DRAWN -	REVISED -
Default	PLOT SCALE = 200.0000' / in.	CHECKED -	REVISED -
	PLOT DATE = 7/9/2015	DATE -	REVISED -

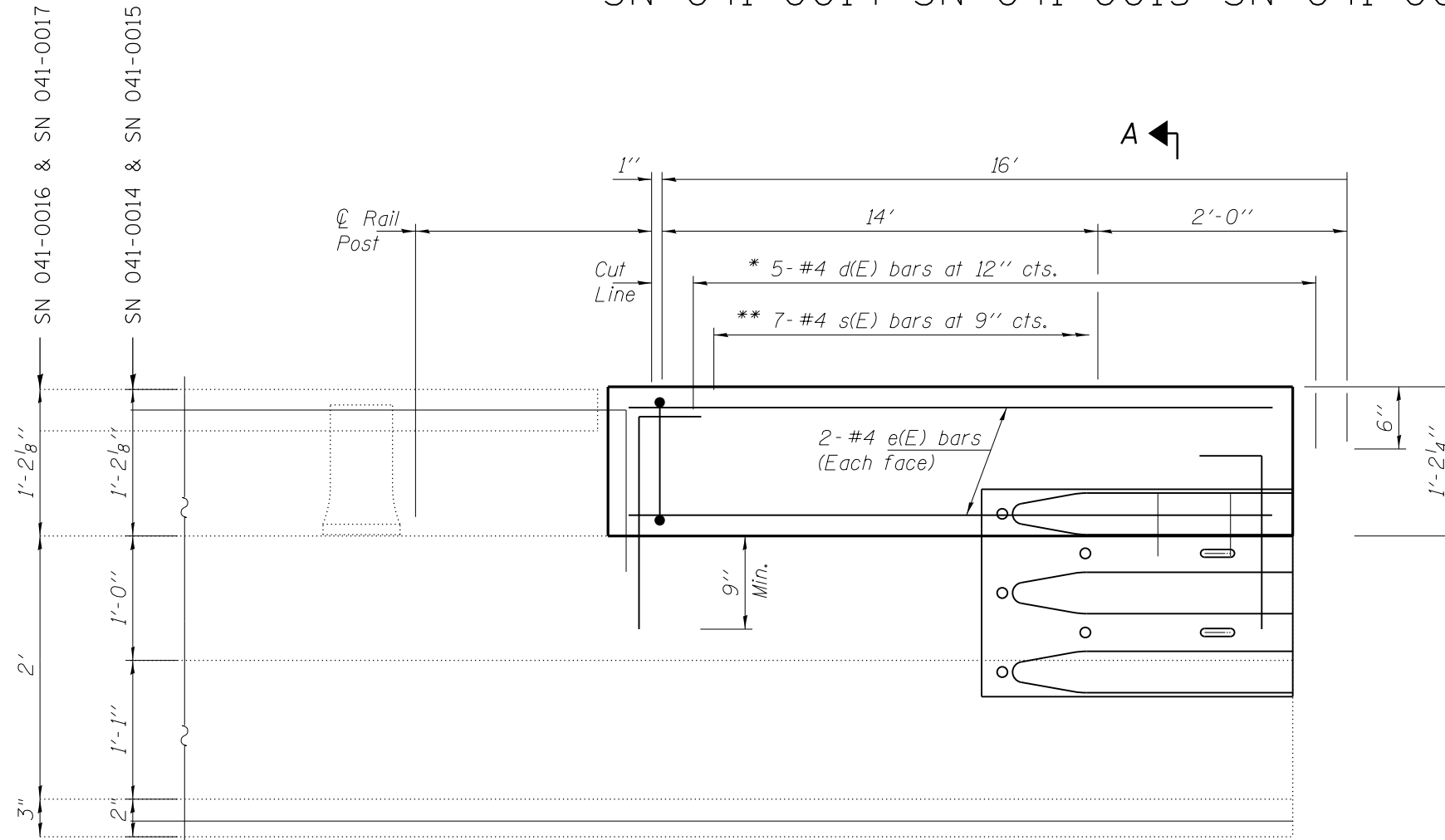
**STATE OF ILLINOIS
DEPARTMENT OF TRANSPORTATION**

HMA TRANSITION DETAILS UNDER STRUCTURES			
SCALE:	SHEET	OF SHEETS	STA. TO STA.

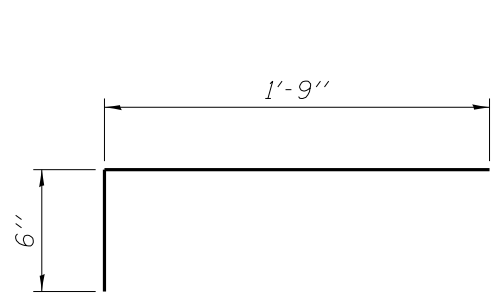
F.A.I. RTE.	SECTION	COUNTY	TOTAL SHEETS	SHEET NO.
1-57	(41-4,41-4-1)RS-2	JEFFERSON	26	24
			CONTRACT NO. 78437	
ILLINOIS FED. AID PROJECT				

PARAPET DETAILS

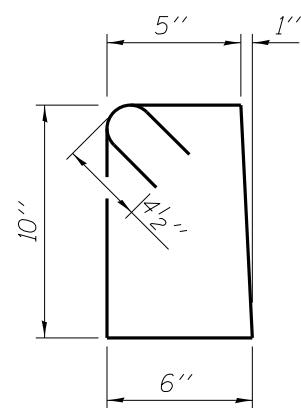
SN 041-0014 SN 041-0015 SN 041-0016 SN 041-0017



INSIDE ELEVATION OF PARAPET



BAR d(E)



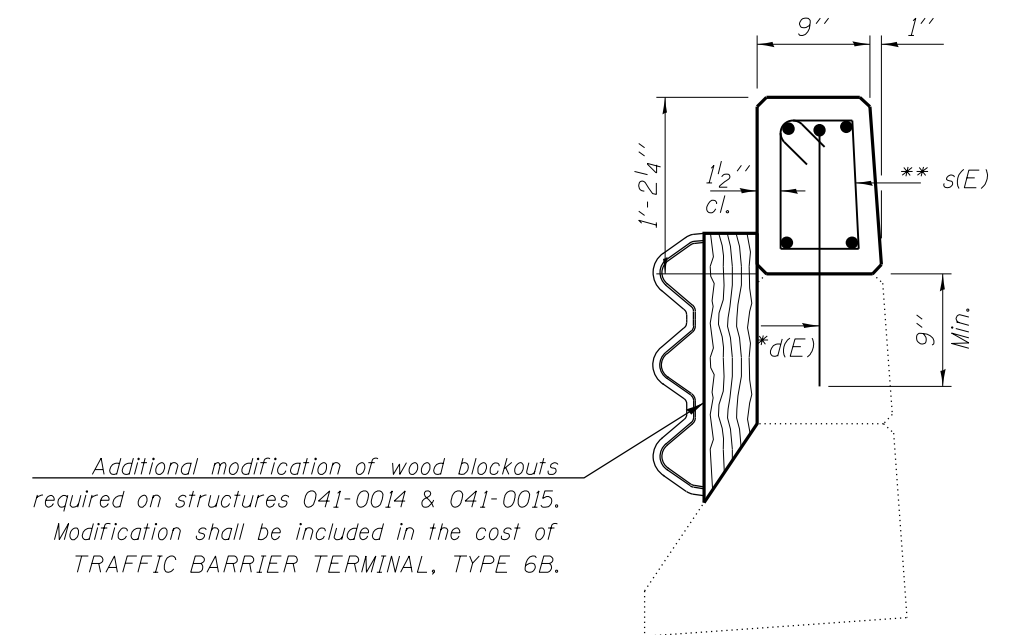
BAR s(E)

* d(E) bars to be epoxy grouted in 7/8"φ x 9" minimum holes. Cut in field as required.

** Tilt s(E) bars as needed to fit.

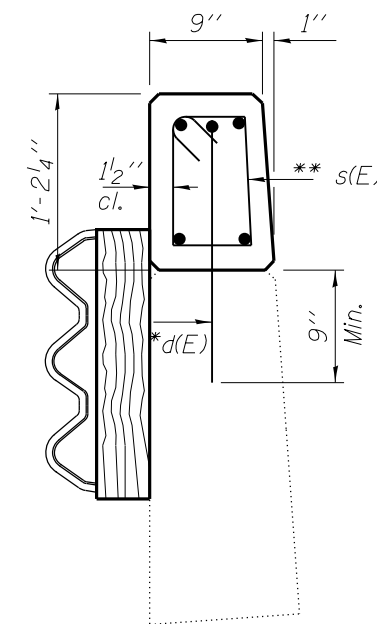
Note

To be used: All sections where proposed Traffic Barrier Terminal, Type 6B will tie into existing parapet wall (12 locations total). (See Highway Standard 631033-05)



Additional modification of wood blockouts required on structures 041-0014 & 041-0015. Modification shall be included in the cost of TRAFFIC BARRIER TERMINAL, TYPE 6B.

SECTION A-A
(STR #041-0014 & 041-0015)



SECTION A-A
(STR # 041-0016 & 041-0017)

BILL OF MATERIAL

Bar	No.	Size	Length	Shape
d	15	#5	2'-3"	┌
e	5	#4	15'-9"	—
s	21	#4	3'-4"	□
Concrete Parapet			Cu. Yd.	0.49
Reinforcement Bars			Pound	134.6

TOTAL BILL OF MATERIAL

Bar	No.	Size	Length	Shape
d	180	#5	2'-3"	┌
e	60	#4	15'-9"	—
s	252	#4	3'-4"	□
Concrete Parapet			Cu. Yd.	5.88
Reinforcement Bars			Pound	1615.2

FILE NAME =	USER NAME = rollavr	DESIGNED -	REVISED -
p:\1\084EBIDINTEG\illinois.gov\PIDOT\Documents\DOT Offices\District 9\Projects\78437\Drawings\CAD\Sheets\78437-sht-cvr-soq.dwg		DRAWN -	REVISED -
Default	PLOT SCALE = 100.0000' / in.	CHECKED -	REVISED -
	PLOT DATE = 7/9/2015	DATE -	REVISED -

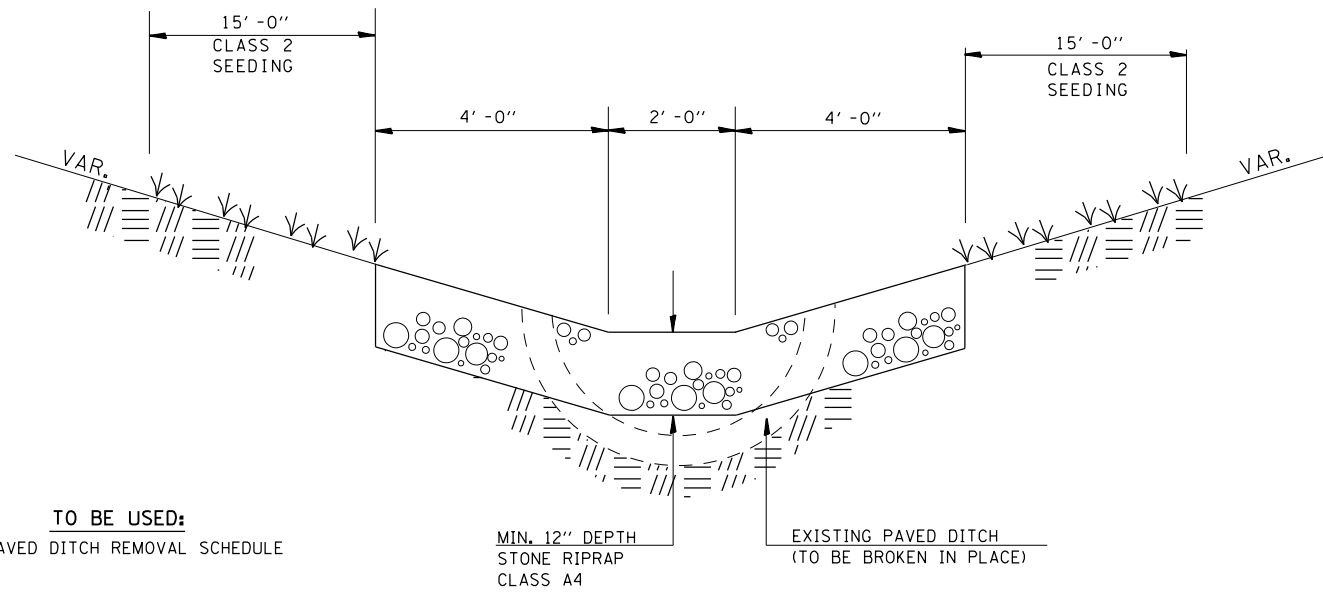
STATE OF ILLINOIS
DEPARTMENT OF TRANSPORTATION

SCALE: SHEET OF SHEETS STA. TO STA.

F.A.I. RTE.	SECTION	COUNTY	TOTAL SHEETS	SHEET NO.
I-57	(41-4,41-4-1)RS-2	JEFFERSON	26	25
CONTRACT NO. 78437			ILLINOIS FED. AID PROJECT	

STONE RIPRAP DITCH DETAIL

(ON EXISTING PAVED DITCH)

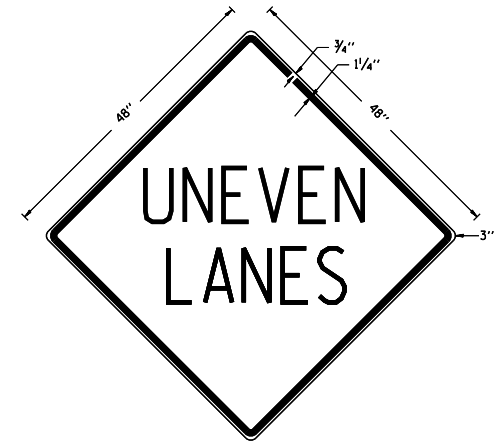


TO BE USED:
SEE PAVED DITCH REMOVAL SCHEDULE

NOTE: THIS WORK SHALL BE PAID FOR AT THE CONTRACT UNIT PRICE PER TON, FOR STONE RIPRAP, CLASS A4, WHICH PRICE SHALL INCLUDE ALL MATERIAL LABOR AND EQUIPMENT TO COMPLETE THE WORK IN PLACE AS SHOWN.
THE FINISHED SIDESLOPES OF THE STONE RIPRAP DITCH SHALL MATCH THE EXISTING GRADE.

UNEVEN LANES SIGN

W8-11 (48" x 48")



COLORS:
LEGEND AND BORDER - BLACK NON-REFLECTORIZED
BACKGROUND - ORANGE REFLECTORIZED

NOTE: PRIOR TO ALLOWING TRAFFIC ON ANY PORTION OF THE ROADWAY THAT HAS BEEN COLDMILLED OR BEFORE RESURFACING OPERATIONS BEGIN, THE CONTRACTOR SHALL HAVE ERECTED "UNEVEN PAVEMENT" SIGNS THAT CONFORM TO THE ABOVE DETAILS. A MINIMUM OF ONE SIGN AT EACH END OF THE IMPROVEMENT WILL BE REQUIRED. THE CONTRACTOR SHALL MAINTAIN THE "UNEVEN PAVEMENT" SIGNS UNTIL THE RESURFACING OPERATIONS ARE COMPLETED.

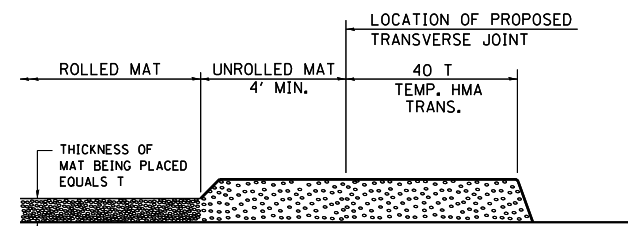
IF AT ANY TIME THE SIGNS ARE IN PLACE BUT NOT APPLICABLE, THEY SHALL BE TURNED FROM THE VIEW OF MOTORISTS OR COVERED AS DIRECTED BY THE ENGINEER.

THE COST OF FURNISHING, ERECTING, MAINTAINING, AND REMOVING THE REQUIRED SIGNS SHALL BE INCLUDED IN THE CONTRACT.

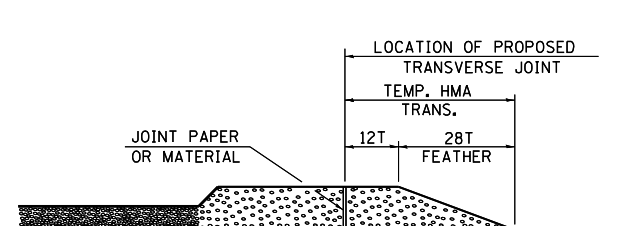
REVISIONS	
DRAWN	2-15-89
REVISED	4-06-93
REDESIGNED	7-23-04
RESIZED	5-08-08
REVIEWED	5-17-13

STD. 9-41

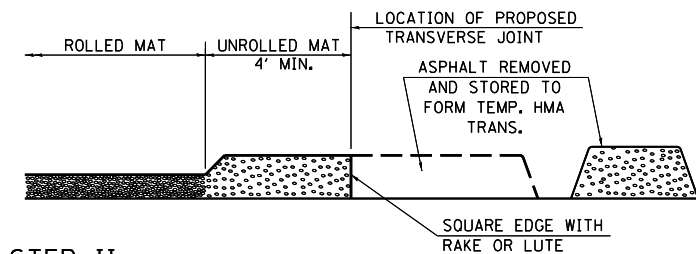
TEMPORARY HOT-MIX ASPHALT TRANSITIONS



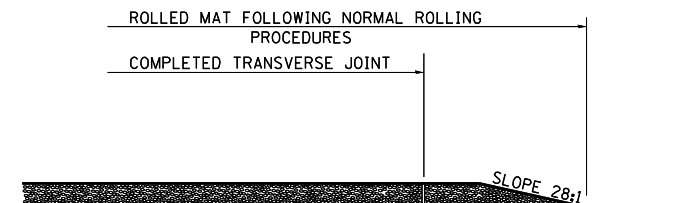
- STEP I**
1. PLACE HOT-MIX ASPHALT MAT, LENGTH 40 TIMES THE THICKNESS OF THE MAT BEING PLACED PAST THE PROPOSED TRANSVERSE JOINT LOCATION USING NORMAL OPERATING PROCEDURES.
 2. EXTREME CARE SHOULD BE TAKEN TO MAINTAIN ENOUGH MATERIAL IN FRONT OF THE SCREED TO MAINTAIN REQUIRED PAVING DEPTH.



- STEP III**
1. JOINT PAPER OR OTHER PRESELECTED JOINT MATERIAL IS THEN PLACED IN THE CLEARED AREA AND THE EXCESS ASPHALT USED TO HAND FORM A TRANSITION TO THE DIMENSIONS SHOWN ABOVE.
 2. NOTE THAT IN CONSTRUCTING THE TRANSITION, THE MAT DEPTH IS CONTINUED AS PART OF THE TRANSITION BEFORE FORMING THE FEATHER.



- STEP II**
1. MOVE THE PAVER OUT OF THE WAY AND REMOVE THE ASPHALT FROM THE AREA OF THE PROPOSED TEMPORARY HOT-MIX ASPHALT TRANSITION.
 2. SQUARE UP THE END OF THE MAT WITH A RAKE OR LUTE.
 3. NOTE THAT THE MAT WITHIN 4' OF THE END OF JOINT IS NOT TO BE ROLLED AT THIS TIME.

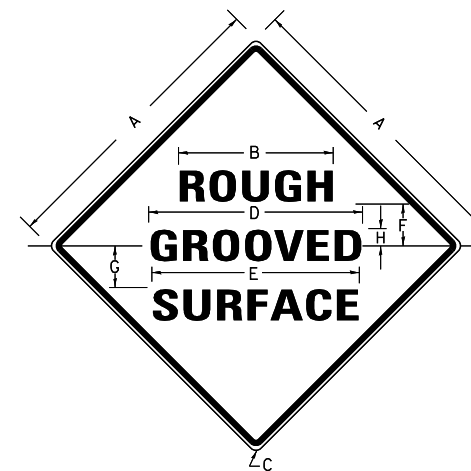


- STEP IV**
1. COMPLETE TEMPORARY TRANSITION BY ROLLING.
 2. TO RESUME PAVING, AT THE JOINT, REMOVE TEMPORARY TRANSITION AND DISPOSE OF THE MATERIAL ACCORDING TO ART. 202.03 OF THE STD. SPECS. (COST INCLUDED IN THE CONTRACT).
 3. CONSTRUCTING THE TEMPORARY TRANSITIONS WILL NOT BE PAID FOR SEPARATELY IN ACCORDANCE WITH ARTICLE 406.14 OF THE STANDARD SPECIFICATIONS.

STD. 9-26

REVISIONS	
REDRAWN	2-15-89
REVISED	8-16-94
REVISED	01-09-07
RESIZED	05-8-08
REVIEWED	05-16-13

ILLINOIS STANDARD



COLORS:
LEGEND AND BORDER- BLACK NON-REFLECTORIZED
BACKGROUND- ORANGE REFLECTORIZED

SIGN SIZE	DIMENSIONS							
	A	B	C	D	E	F	G	H
48x48	48.0	24.1	3.0	34.0	33.0	6.0	13.0	3.5

SIGN SIZE	SERIES LINES			MAR-GIN	BOR-DER	BLANK STD.
	1	2	3			
48x48	7C	7C	7C	0.8	1.2	B4-48D

ALL DIMENSIONS IN INCHES

NOTES:

PRIOR TO ALLOWING TRAFFIC ON ANY PORTION OF THE ROADWAY THAT HAS BEEN COLDMILLED, THE CONTRACTOR SHALL HAVE ERECTED "ROUGH GROOVED SURFACE" SIGNS THAT CONFORM TO THE ABOVE DETAILS. A MINIMUM OF ONE SIGN AT EACH END OF THE IMPROVEMENT WILL BE REQUIRED. THE CONTRACTOR SHALL MAINTAIN THE "ROUGH GROOVED SURFACE" SIGNS UNTIL THE COLDMILLED SURFACE IS COVERED WITH LEVELING BINDER OR SURFACE COURSE.

IF AT ANY TIME THE SIGNS ARE IN PLACE BUT NOT APPLICABLE, THEY SHALL BE TURNED FROM THE VIEW OF MOTORISTS OR COVERED AS DIRECTED BY THE ENGINEER.

THE COST OF FURNISHING, ERECTING, MAINTAINING, AND REMOVING THE REQUIRED SIGNS SHALL BE INCLUDED IN THE CONTRACT.

REVISIONS	
REDRAWN	2-15-89
REVISED	4-6-93
REVISED	3-27-08
REVIEWED	5-17-13

STD. 9-39

FILE NAME =	USER NAME = rollav	DESIGNED -	REVISED -
pw\11084EBIDINTEG.illinois.gov\PIDOT\Documents\DOT Offices\District 9\Projects\78437\CAD\Drawings\78437-sht-cvr-soq.dwg		CHECKED -	REVISED -
Default	PLOT DATE = 7/9/2015	DATE -	REVISED -

STATE OF ILLINOIS
DEPARTMENT OF TRANSPORTATION

SCALE: SHEET OF SHEETS STA. TO STA.

F.A.I. RTE.	SECTION	COUNTY	TOTAL SHEETS	SHEET NO.
1-57	(41-4,41-4-1)RS-2	JEFFERSON	26	26
CONTRACT NO. 78437			ILLINOIS FED. AID PROJECT	