

FOR INDEX OF SHEETS, SEE SHEET NO. 2

FOR INDEX OF HIGHWAY STANDARDS, SEE SHEET NO. 2

PROJECT LOCATED IN THE CITY OF MOMENCE

STATE OF ILLINOIS

DEPARTMENT OF TRANSPORTATION

DIVISION OF HIGHWAYS

PLANS FOR PROPOSED FEDERAL AID HIGHWAY

ILLINOIS TRANSPORTATION ENHANCEMENT PROGRAM
MUN 1630, WASHINGTON STREET

ILLINOIS ROUTE 1 /17 DIXIE HIGHWAY (RANGE STREET) TO LOCUST STREET
STREETSCAPE IMPROVEMENTS

SECTION: 10-00059-00-LT

PROJECT: TE-00D3(095)

CITY OF MOMENCE
KANKAKEE COUNTY

JOB NO: C-93-118-15

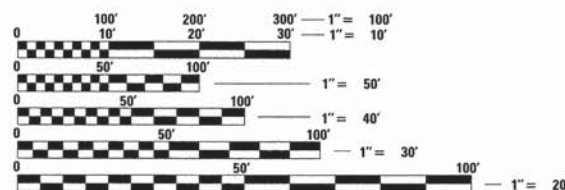
LOCATION MAP
NOT TO SCALE

MUN. RTE.	SECTION	COUNTY	TOTAL SHEETS	SHEET NO.
1630	10-00059-00-LT	KANKAKEE	20	1
TE-00D3(095)		ILLINOIS	CONTRACT NO. 87633	



FUNCTIONAL CLASSIFICATION

WASHINGTON STREET
URBAN LOCAL STREET
POSTED SPEED LIMIT = 25 MPH
2015 ADT = 2,614 VPD
PV = 70%, SV = 25%, MV = 5%



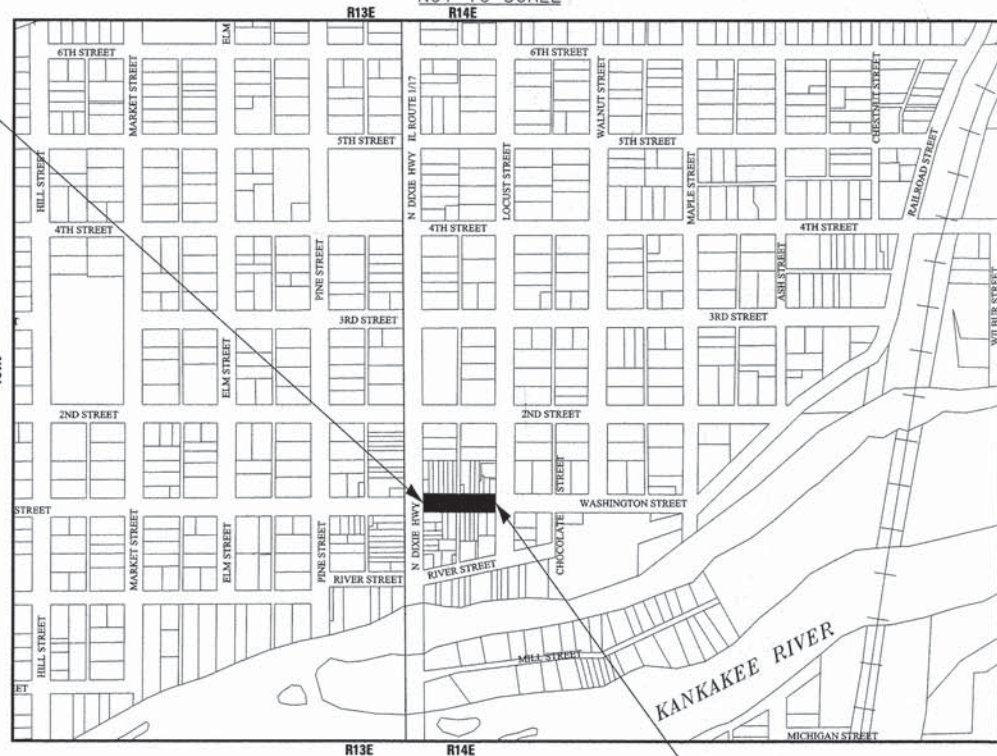
FULL SIZE PLANS HAVE BEEN PREPARED USING STANDARD ENGINEERING SCALES. REDUCED SIZED PLANS WILL NOT CONFORM TO STANDARD SCALES. IN MAKING MEASUREMENTS ON REDUCED PLANS, THE ABOVE SCALES MAY BE USED.

J.U.L.I.E. DESIGN STAGE REQUEST
DIG. No. X1241327



CONTACT JULIE AT 811 OR 800-892-0123 WITH THE FOLLOWING:
COUNTY = KANKAKEE
CITY-TWNSHP. = MOMENCE-MOMENCE
SEC. & 1/4 SEC. NO. = 19NW, T31N, R14E
48 HOURS (2 working days) BEFORE YOU DIG

MUN 1630, WASHINGTON STREET
BEGIN IMPROVEMENT
STA 15+36



GROSS LENGTH = 373 FT. = 0.071 MILE
NET LENGTH = 373 FT. = 0.071 MILE

MUN 1630, WASHINGTON STREET
END IMPROVEMENT
STA 19+09



PROJECT MANAGER
"LICENSE EXPIRES 11-30-2015"

STATE OF ILLINOIS DEPARTMENT OF TRANSPORTATION DIVISION OF HIGHWAYS	
APPROVED	July 8, 2015 <i>Walt Bate</i> CITY OF MOMENCE, MAYOR
PASSED	7/22/15 <i>Dave B...</i> DISTRICT 3 ENGINEER OF LOCAL ROADS AND STREETS
RELEASING FOR BID BASED ON LIMITED REVIEW	7/22/15 <i>Dave B...</i> DEPUTY DIRECTOR OF HIGHWAYS, REGION 2 ENGINEER

PRINTED BY THE AUTHORITY
OF THE STATE OF ILLINOIS



20150918 11:58:55 AM C:\Users\jblackley\AppData\Local\Temp\150743\150743_115855\150743_115855.dwg

GENERAL NOTES

1. ALL CONSTRUCTION SHALL BE DONE IN ACCORDANCE WITH THE DETAILS IN THE PLANS, THE SPECIAL PROVISIONS INCLUDED IN THE CONTRACT DOCUMENTS, AND THE LATEST EDITION OF THE FOLLOWING STATE OF ILLINOIS SPECIFICATIONS: "THE STANDARD SPECIFICATIONS FOR ROAD AND BRIDGE CONSTRUCTION" (REFERRED TO AS THE "STANDARD SPECIFICATIONS"), THE "SUPPLEMENTAL SPECIFICATIONS AND RECURRING SPECIAL PROVISIONS", THE "MANUAL ON UNIFORM TRAFFIC CONTROL DEVICES FOR STREETS AND HIGHWAYS", THE "MANUAL OF TEST PROCEDURES FOR MATERIALS" AND THE "STANDARD SPECIFICATIONS FOR WATER AND SEWER MAIN CONSTRUCTION IN ILLINOIS".
2. THE LOCATIONS OF PUBLIC OR PRIVATE UTILITIES SHOWN ON THE PLANS REPRESENTS ONLY THE OPINION OF THE CITY AND IS ONLY INCLUDED FOR THE CONVENIENCE OF THE BIDDER AND THE ACCURACY IS NOT GUARANTEED. THE CONTRACTOR SHALL BE RESPONSIBLE FOR THE PROTECTION OF ALL UNDERGROUND OR SURFACE UTILITIES, INCLUDING SPRINKLER SYSTEMS, EVEN THOUGH THEY MAY NOT BE SHOWN ON THE PLANS. THE CONTRACTOR SHALL ALSO VERIFY THE DEPTHS OF THE EXISTING UTILITIES IF NECESSARY TO VERIFY THAT GRADE CONFLICTS WILL NOT OCCUR WITH ANY PROPOSED UTILITIES PRIOR TO CONSTRUCTION AND ORDERING ANY MATERIALS. ANY RELOCATION OR LOWERING OF UTILITIES SHALL BE COORDINATED BY THE CONTRACTOR. THE COST OF THIS EXPLORATION SHALL BE INCLUDED IN THE COST OF THE PROPOSED UTILITY CONSTRUCTION.
3. THE CONTRACTOR SHALL NOTIFY THE CITY DIRECTOR OF PUBLIC WORKS AT LEAST 48 HOURS IN ADVANCE OF BEGINNING WORK TO OBTAIN CITY UTILITY LOCATIONS.
4. THE CONTRACTOR MAY OBTAIN MUNICIPAL WATER IN BULK, AT NO CHARGE, AS LONG AS THERE IS NOT A "WATERING BAN" IN EFFECT. THE INDISCRIMINATE USE OF FIRE HYDRANTS IS STRICTLY PROHIBITED. WATER FOR CONSTRUCTION SHALL BE METERED OR OTHERWISE ACCOUNTED FOR AND A DAILY LOG MAINTAINED. THE CONTRACTOR SHALL PROVIDE THE WATER TRUCK AND DRIVER REQUIRED TO OBTAIN AND TRANSPORT THIS WATER. THE CITY RESERVES THE RIGHT TO RESTRICT OR REFUSE THE USE OF CITY WATER IF DEEMED NECESSARY.
5. ACCESS TO PRIVATE DRIVEWAYS AND BUILDING ENTRANCES SHALL BE PROVIDED AT ALL TIMES EXCEPT DURING ACTUAL CONSTRUCTION ADJACENT THERE TO. TEMPORARY RAMPS SHALL BE CONSTRUCTED AS NEEDED TO PROVIDE SUCH ACCESS, UTILIZING CRUSHED STONE OR CRUSHED GRAVEL.
6. IT WILL BE THE CONTRACTOR'S RESPONSIBILITY TO NOTIFY THE ENGINEER, RESIDENTS AND THE CITY WHEN ACCESS TO DRIVEWAYS OR BUILDING ENTRANCES WILL BE TEMPORARILY CLOSED DUE TO CURB AND GUTTER AND/OR DRIVEWAY AND/OR SIDEWALK REPLACEMENT. THE CONTRACTOR SHALL DISTRIBUTE NOTICES PROVIDED BY THE CITY TO RESIDENTS AT LEAST 24 HOURS PRIOR TO PLANNED CLOSURE. EVERY EFFORT SHALL BE MADE TO ACCOMMODATE ACCESS TO THESE PROPERTIES INCLUDING KNOCKING ON DOORS WHEN DRIVEWAYS ARE ABOUT TO BE CLOSED.
7. THE CONTRACTOR SHALL PROVIDE AND INSTALL TWO (2) WEIGHTED SANDBAGS ON EACH TYPE I OR TYPE II BARRICADE USED. ONE (1) WEIGHTED SANDBAG SHALL BE PLACED ACROSS EACH BOTTOM RAIL.
8. PORTLAND CEMENT CONCRETE SIDEWALK SHALL BE THICKENED TO 8-INCHES AT LOCATIONS WHERE THE SIDEWALK CROSSES ALLEYS. TRANSVERSE EXPANSION JOINTS ½" SHALL BE PLACED EVERY 50 FEET OR AS DETERMINED BY THE ENGINEER. TRANSVERSE CONTRACTION JOINTS SHALL BE PLACED EVERY 5-FEET.
9. A ½-INCH THICK EXPANSION JOINT SHALL BE PROVIDED AT THE JUNCTION OF THE DRIVEWAY APRON AND CURB, AND AT THE JUNCTION OF THE DRIVEWAY APRON AND THE SIDEWALK. THIS WORK WILL BE INCLUDED IN THE COST OF PORTLAND CEMENT CONCRETE DRIVEWAY PAVEMENT.
10. THE CONTRACTOR SHALL CONTACT THE LOCAL AGENCY MATERIAL INSPECTOR AT LEAST 48 HOURS PRIOR TO ANY CONCRETE OR HOT-MIX ASPHALT MATERIAL DELIVERIES.
11. DETECTABLE WARNINGS SHALL BE CONSTRUCTED WITH THE INSTALLATION OF AN ADA-COMPLIANT CAST-IN-PLACE COMPOSITE 24"x48" MINIMUM NOMINAL SIZE PANEL USING EITHER ARMOR-TILE TACTILE WARNING SURFACE TILE SYSTEM AS MANUFACTURED BY ENGINEERING PLASTICS, INC., WILLIAMSVILLE NY; CAST-IN PLACE TACTILE WARNING SURFACE AS MANUFACTURED BY ADA SOLUTIONS, INC., NORTH BILLERICA, MA OR POLYMER TILE SYSTEM AS MANUFACTURED BY TUFTILE, LAKE ZURICH, IL. THE DOMES LOCATED ON THE PANEL SHALL PARALLEL THE PAVEMENT CROSS WALK WITH THE CLOSEST EDGE LOCATED AT THE BACK OF CURB. THE CONTRASTING PANEL COLOR SHALL BE SELECTED BY THE CITY. INSTALLATION SHALL OCCUR IN ACCORDANCE WITH THE MANUFACTURER'S RECOMMENDATIONS.
12. IN AREAS WHERE THE EXISTING PAVEMENT, DRIVEWAY, SIDEWALK, OR CURB AND GUTTER IS TO BE REMOVED AND REPLACED, THE REMOVAL AND DISPOSAL OF ANY ADDITIONAL MATERIAL REQUIRED TO ESTABLISH THE PROPOSED PAVEMENT, DRIVEWAY, SIDEWALK, OR CURB AND GUTTER SUBGRADE ELEVATION SHALL BE INCLUDED IN THE APPROPRIATE REMOVAL PAY ITEMS.
13. THE CONTRACTOR WILL BE REQUIRED TO USE A STEEL PLATE OR PLATES TO CLOSE ANY GAPS OCCURRING WHEN A FRAME IS OFFSET FROM THE STRUCTURE. THE STEEL PLATE SHALL BE ½-INCH THICK AND APPROXIMATELY 6-INCH WIDE BY 24-INCH LONG. SOME ADJUSTMENT IN SIZE MAY BE NECESSARY TO PREVENT THE STEEL PLATE FROM OVERHANGING THE OUTSIDE OF THE STRUCTURE WALL. THE STEEL PLATE SHALL BE BEDDED IN AND COVERED WITH MORTAR. THIS WORK SHALL BE INCLUDED IN THE COST OF STRUCTURE ADJUSTMENTS OR STRUCTURE RECONSTRUCTIONS.
14. THE CURB SHALL BE TAPERED TO THE GUTTER IN A FIVE (5) FOOT LENGTH WHEREVER THE CURB AND GUTTER TERMINATES, WITH AN EXPANSION JOINT PLACED AT THE START OF THE TAPER.
15. TRENCH BACKFILL FOR THIS PROJECT SHALL CONSIST OF CRUSHED CA-6 AND SHALL BE COMPACTED BY METHOD 1 ONLY.
16. ALL SIGNS, POSTS, PLANTER BOXES AND DECORATIVE ITEMS TO REMAIN WHICH ARE IN CONFLICT WITH THE PROPOSED IMPROVEMENTS SHALL BE TEMPORARILY REMOVED AND REPLACED OR RELOCATED AS DETERMINED BY THE ENGINEER AT THE TIME OF CONSTRUCTION AND SHALL BE INCLUDED IN THE COST OF EARTH EXCAVATION. EVERY EFFORT SHALL BE MADE BY THE CONTRACTOR WHEN REMOVING AND REPLACING OR RELOCATING THESE ITEMS TO PRESERVE THEM FROM HARM.
17. PRIOR TO CONSTRUCTION OF ANY PROPOSED UTILITIES, THE CONTRACTOR SHALL EXCAVATE AND LOCATE THE EXISTING UTILITIES TO VERIFY THEIR LOCATION, SIZE, AND DEPTH TO INSURE THAT GRADE CONFLICTS WILL NOT OCCUR. THE COST OF THIS EXPLORATION SHALL BE INCLUDED IN THE NEW STORM STRUCTURE PAY ITEM.
18. THE COST OF MAKING ANY SEWER CONNECTIONS TO EXISTING DRAINAGE STRUCTURES OR PIPE SHALL BE INCLUDED IN THE NEW STORM STRUCTURE PAY ITEM. ANY ADDITIONAL STORM SEWER PIPE REQUIRED TO MAKE THE CONNECTION SHALL BE OF THE SAME SIZE AND MATERIAL TYPE AS THE EXISTING STORM SEWER AND SHALL BE INCLUDED IN THE NEW STORM STRUCTURE PAY ITEM.
19. STORM STRUCTURE OFFSET LOCATIONS ARE TO THE EDGE OF PAVEMENT IF THE STRUCTURE IS IN THE CURB LINE OR TO THE CENTER OF STRUCTURE IF THE STRUCTURE IS NOT IN THE CURBLINE.
20. ALL TEMPORARY STORM SEWER PLUGS AND TEMPORARY STORM SEWER CONNECTIONS REQUIRED FOR CONSTRUCTION STAGING SHALL BE INCLUDED IN THE COST OF THE STORM SEWER CONSTRUCTION.
21. FRAME ELEVATIONS GIVEN ON THE PLANS ARE ONLY TO ASSIST THE CONTRACTOR IN DETERMINING THE APPROXIMATE OVERALL HEIGHT OF THE STRUCTURE. FRAMES ON ALL NEW STRUCTURES SHALL BE ADJUSTED TO THE FINAL ELEVATION OF THE AREA IN WHICH THEY ARE LOCATED AS PART OF COST OF THE STRUCTURE.
22. A PORTABLE BATHROOM SHALL BE PLACED ON THE JOB SITE AND RELOCATED WHEN NECESSARY SO IT IS ACCESSIBLE TO WORKERS. THIS SHALL BE INCLUDED IN THE PAY ITEM FOR MOBILIZATION.

23. DURING CONSTRUCTION, THE CONTRACTOR WILL BE PERMITTED TO LIMIT ON-STREET PARKING IN ORDER TO COMPLETE CONSTRUCTION OPERATIONS. THE CONTRACTOR WILL BE REQUIRED TO COORDINATE WITH THE MUNICIPALITY A MINIMUM OF 48 HOURS IN ADVANCE. IT WILL BE THE RESPONSIBILITY OF THE CONTRACTOR TO PLACE ADVANCE SIGNS TO ALERT RESIDENTS AND COMMUTERS OF THE CONSTRUCTION WORK. THE PLACEMENT OF THESE SIGNS SHALL TAKE PLACE 48 HOURS IN ADVANCE IN ORDER TO ALLOW SUFFICIENT TIME FOR RESIDENTS AND GENERAL PUBLIC TO REVISE THEIR PARKING PATTERNS.
24. WORK SHALL BE LIMITED TO ONE SIDE OF THE ROADWAY AT A TIME TO MINIMIZE CONGESTION WHERE PRACTICAL.
25. WORK AND MATERIALS REQUIRED TO INSTALL 1-INCH UNIT DUCT SHALL BE INCLUDED IN THE PAY ITEM DETECTOR LOOP, TYPE I.
26. IF MATERIAL IS TAKEN TO AN IEPA APPROVED FILL SITE, THE CONTRACTOR IS RESPONSIBLE FOR THE TESTING REQUIRED BY THE SITE WHICH INCLUDES: CERTIFYING SOILS ARE UNCONTAMINATED AND WITHIN PH OF 6.25 TO 9.0, COMPLETION OF IEPA FORM LPC-663 BY A LICENSED P.E., AND ADDITIONAL ANALYTICAL TESTING REQUIRED BY THE DISPOSAL SITE AND/OR ENGINEER. THE ENGINEER SHALL BE PROVIDED COPIES OF ALL TEST RESULTS AND CERTIFICATIONS (INCLUDING LPC-663), BASED ON PRELIMINARY SCREENING OF THE AREA IT HAS BEEN DETERMINED THAT THE PROJECT SITE HAS A LOW RISK FOR ENCOUNTERING CONTAMINATED SOILS OR SPECTAL WASTE SOILS. PID OR FID READINGS ARE NOT ACCEPTABLE RESULTS FOR CLASSIFYING THE MATERIAL. IF REJECTED, ANALYTICAL TESTING SHALL BE PERFORMED IN ACCORDANCE WITH ARTICLE 669.08. IF MATERIAL IS UNCONTAMINATED, IT SHALL BE REMOVED AND DISPOSED OF IN ACCORDANCE WITH THE APPROPRIATE PAY ITEM. IF THE MATERIAL IS CLASSIFIED AS NON-SPECIAL WASTE, THE CONTRACTOR SHALL REUSE THE MATERIAL ON SITE AT NO ADDITIONAL COST. IF ON-SITE USE IS NOT FEASIBLE, DISPOSAL SHALL BE PAID FOR ACCORDING TO ARTICLE 109.04. ALL ADDITIONAL CERTIFICATIONS AND ANALYSIS COMPLETED BY THE CONTRACTOR SHALL BE INCLUDED IN THE COST OF APPLICABLE EXCAVATION ITEMS.
27. THE THICKNESS OF HMA SHOWN ON THE PLANS IS THE NOMINAL THICKNESS. DEVIATIONS FROM THE NOMINAL THICKNESS WILL BE PERMITTED WHEN SUCH DEVIATIONS OCCUR DUE TO IRREGULARITIES IN THE EXISTING SURFACE OR BASE ON WHICH THE HMA IS PLACED.
28. THE HMA SURFACE OF ALL MAILBOX TURNOUTS, PRIVATE ENTRANCES, COMMERCIAL ENTRANCES, AND SIDE ROADS SHALL BE MADE NEATLY, IN A WORKMANLIKE MANNER, AND SHALL ACCURATELY CONFORM TO THE SHAPES AND DIMENSIONS SHOWN ON THE PLAN DETAILS. IF REQUIRED BY THE ENGINEER, THE CONTRACTOR SHALL BE REQUIRED TO SAW CUT THE HMA SURFACE TO CONFORM TO THE SHAPES AND DIMENSIONS SHOWN ON THE PLAN DETAILS. THIS WORK SHALL BE INCLUDED IN THE COST OF THE HMA SURFACE.
29. EXCEPT AS NOTED ON THE PLANS, PAVEMENT GRADES SHOWN ARE AT THE TOP OF THE CURB AND GUTTER RATHER THAN THE ASPHALT.
30. FOR STABILIZATION, ALL TYPE III BARRICADES SHALL REQUIRE A MINIMUM OF FOUR SAND BAGS PER BARRICADE.
31. SEEDING SHALL NOT BE PERMITTED AT ANY TIME WHEN THE GROUND IS FROZEN, WET, OR IN AN UNTILLABLE CONDITION. LOCATIONS TO BE SEEDED WILL BE DETERMINED BY THE ENGINEER.
32. ONLY THOSE TREES DESIGNATED BY THE ENGINEER SHALL BE REMOVED. THE CONTRACTOR SHALL PROTECT ALL REMAINING TREES FROM DAMAGE DUE TO HIS OPERATIONS.
33. FOR NEW CONSTRUCTION, PLACE CURB RAMPS FOR SIDEWALKS (STANDARD 424001) AT ALL LOCATIONS WHERE PROPOSED SIDEWALK ABUTS CURB AT STREET ENTRANCES.
34. ABANDONED UNDERGROUND UTILITIES THAT CONFLICT WITH CONSTRUCTION SHALL BE DISPOSED OF OUTSIDE THE LIMITS OF THE RIGHT OF WAY ACCORDING TO ARTICLE 202.03 OF THE STANDARD SPECIFICATIONS AND AS DETERMINED BY THE ENGINEER. THIS WORK WILL NOT BE PAID FOR SEPARATELY, BUT SHALL BE INCLUDED IN THE COST OF EARTH EXCAVATION.
35. ANY REFERENCE TO A STANDARD IN THESE PLANS SHALL BE INTERPRETED TO MEAN THE EDITION AS INDICATED BY THE SUBNUMBER SHOWN IN THE LIST OF STANDARDS OR THE COPY INCLUDED IN THESE PLANS.
36. THE FOLLOWING RATES OF APPLICATION HAVE BEEN USED IN CALCULATING PLAN QUANTITIES:
BITUMINOUS MATERIALS PRIME COAT 0.05 POUNDS / SQ FT
HMA RESURFACING 112 LBS / SQ YD / IN
37. MEMBERS OF JULIE KNOWN TO BE WITHIN THE LIMITS OF THE IMPROVEMENT ARE:
1. COMMONWEALTH EDISON COMPANY
2. AT&T DISTRIBUTION
3. NICOR GAS
4. MEDIACOM COMMUNICATIONS
5. CITY OF MOMENCE
THE CONTRACTOR SHALL CONTACT JULIE AT LEAST 48 HOURS PRIOR TO EXCAVATION TO DETERMINE WHICH UTILITIES ARE IN THE AREA.

HIGHWAY STANDARDS

000001-06	STANDARD SYMBOLS, ABBREVIATIONS AND PATTERNS
280001-07	TEMPORARY EROSION CONTROL SYSTEMS
424001-08	PERPENDICULAR CURB RAMPS FOR SIDEWALKS
602301-04	INLET - TYPE A
604051-04	FRAME AND GRATE TYPE 11
606001-06	CONCRETE CURB TYPE B AND COMBINATION CONCRETE CURB AND GUTTER
701001-02	OFF-RD OPERATIONS, 2L, 2W, MORE THAN 15' (4.5 m) AWAY
701006-05	OFF-RD OPERATIONS, 2L, 2W, 15' (4.5 m) TO 24" (600 mm) FROM PAVEMENT
701501-06	URBAN LANE CLOSURE, 2L, 2W, UNDIVIDED
701701-09	URBAN LANE CLOSURE, MULTILANE INTERSECTION
701801-05	SIDEWALK, CORNER OR CROSSWALK CLOSURE
701901-04	TRAFFIC CONTROL DEVICES
780001-05	TYPICAL PAVEMENT MARKINGS
886001-01	DETECTOR LOOP INSTALLATIONS
886006-01	TYPICAL LAYOUTS FOR DETECTION LOOPS

INDEX OF SHEETS

SHEET NO.	TITLE
1	COVER SHEET
2	INDEX OF SHEETS, HIGHWAY STANDARDS, GENERAL NOTES, BENCHMARKS, CONSTRUCTION SEQUENCE AND COMMITMENTS
3	4 SUMMARY OF QUANTITIES
5	6 TYPICAL SECTIONS AND HOT-MIX ASPHALT MIXTURE REQUIREMENTS
7	REMOVAL PLAN - WASHINGTON STREET
8	ROADWAY PLAN AND PROFILE - WASHINGTON STREET
9	ROADWAY PLAN AND PROFILE - WASHINGTON STREET
10	ROADWAY PLAN AND PROFILE - WASHINGTON STREET
11	ROADWAY PLAN AND PROFILE - WASHINGTON STREET
12	ROADWAY PLAN AND PROFILE - WASHINGTON STREET
13	ELECTRICAL PLAN - WASHINGTON STREET
14	MISCELLANEOUS DETAILS
15	16 IDOT DISTRICT 3 DETAILS
17	20 CROSS SECTIONS - WASHINGTON STREET

COMMITMENTS

THERE ARE NO COMMITMENTS

BENCHMARKS

BM 1	SET X ON NORTH NORTHEAST BOLT OF FIRE HYDRANT ON SOUTHWEST CORNER OF WASHINGTON STREET AND ILLINOIS ROUTE 1/17 DIXIE HIGHWAY (RANGE STREET) EL = 624.99
BM 2	SOUTH ARROW BOLT OF FIRE HYDRANT ON NORTHWEST CORNER OF WASHINGTON STREET AND LOCUST STREET EL = 625.59

CONSTRUCTION SEQUENCE

THE CITY OF MOMENCE REQUESTS THIS PROJECT BEGIN IN THE SPRING OF 2016 TO AVOID A WINTER SHUTDOWN / PROJECT SUSPENSION. THE CITY AND CONTRACTOR SHALL COORDINATE THE START DATE AFTER THE BID OPENING. REGARDLESS OF THE START DATE, WORKING DAYS SHALL BEGIN MAY 1, 2016.

ALL WORK SHALL BE SUBSTANTIALLY COMPLETED BY 25 WORKING DAYS, EXCLUDING PUNCH LIST ITEMS AND ALL WORK SHALL BE COMPLETED BY 30 WORKING DAYS UNLESS ADDITIONAL TIME IS GRANTED IN ACCORDANCE WITH SECTION 108.08 OF THE STANDARD SPECIFICATIONS, OR THE CONTRACTOR SHALL BE LIABLE FOR LIQUIDATED DAMAGES PER CALENDAR DAY IN ACCORDANCE WITH SECTION 108.09 OF THE STANDARD SPECIFICATIONS.

STATE OF ILLINOIS DEPARTMENT OF TRANSPORTATION

INDEX OF SHEETS, HIGHWAY STANDARDS, GENERAL NOTES, BENCHMARKS, CONSTRUCTION SEQUENCE AND COMMITMENTS

SCALE: NONE

STA. TO STA.

MUN. RTE.	SECTION	COUNTY	TOTAL SHEETS	SHEET NO.
1630	10-00059-00-LT	KANKAKEE	20	2
CONTRACT NO. 87633				

FED. ROAD DIST. NO. ILLINOIS FED. AID PROJECT TE-00031095

BAXTER & WOODMAN
Consulting Engineers

DESIGNED - MWP	REVISED - IDOT REVIEW 6-29-15
DRAWN - KAR	REVISED - CITY REVIEW 6-29-15
CHECKED - TMS	REVISED -
DATE - 6/2/15	FILE - 1007435HT-GenNotes.dgn

SUMMARY OF QUANTITIES

CODE NUMBER	PAY ITEM	UNIT	TOTAL QUANTITY	CONSTRUCTION TYPE CODE	
				ROADWAY	0031 ITEP
20200100	EARTH EXCAVATION	CU YD	172		172
20400800	FURNISHED EXCAVATION	CU YD	139		139
28000510	INLET FILTERS	EACH	4		4
35101600	AGGREGATE BASE COURSE, TYPE B 4"	SQ YD	1,307		1,307
35101800	AGGREGATE BASE COURSE, TYPE B 6"	SQ YD	50		50
35300105	PORTLAND CEMENT CONCRETE BASE COURSE 6 1/4"	SQ YD	94		94
40600275	BITUMINOUS MATERIALS (PRIME COAT)	POUND	43		43
40800050	INCIDENTAL HOT-MIX ASPHALT SURFACING	TON	17		17
42001300	PROTECTIVE COAT	SQ YD	1,147		1,147
42300400	PORTLAND CEMENT CONCRETE DRIVEWAY PAVEMENT, 8 INCH	SQ YD	30		30
42400200	PORTLAND CEMENT CONCRETE SIDEWALK 5 INCH	SQ FT	8,070		8,070
42400410	PORTLAND CEMENT CONCRETE SIDEWALK 8 INCH	SQ FT	180		180
42400800	DETECTABLE WARNINGS	SQ FT	76		76
44000100	PAVEMENT REMOVAL	SQ YD	196		196
44000200	DRIVEWAY PAVEMENT REMOVAL	SQ YD	32		32

* SPECIALTY ITEM
INDICATES SPECIAL PROVISION

CODE NUMBER	PAY ITEM	UNIT	TOTAL QUANTITY	CONSTRUCTION TYPE CODE	
				ROADWAY	0031 ITEP
44000500	COMBINATION CURB AND GUTTER REMOVAL	FOOT	804		804
55100300	STORM SEWER REMOVAL 8"	FOOT	8		8
# * 56500600	DOMESTIC WATER SERVICE BOXES TO BE ADJUSTED	EACH	20		20
60238800	INLETS, TYPE A	EACH	1		1
60250200	CATCH BASINS TO BE ADJUSTED	EACH	3		3
60260100	INLETS TO BE ADJUSTED	EACH	3		3
60266600	VALVE BOXES TO BE ADJUSTED	EACH	2		2
60404800	FRAMES AND GRATES, TYPE 11	EACH	1		1
60500060	REMOVING INLETS	EACH	1		1
60600605	CONCRETE CURB, TYPE B	FOOT	84		84
60603800	COMBINATION CONCRETE CURB AND GUTTER, TYPE B-6.12	FOOT	779		779
60605000	COMBINATION CONCRETE CURB AND GUTTER, TYPE B-6.24	FOOT	64		64
67100100	MOBILIZATION	L SUM	1		1
# 70102620	TRAFFIC CONTROL AND PROTECTION, STANDARD 701501	L SUM	1		1
# 70102640	TRAFFIC CONTROL AND PROTECTION, STANDARD 701801	L SUM	1		1

* SPECIALTY ITEM
INDICATES SPECIAL PROVISION

COPYRIGHT © 2015 BY BAXTER & WOODMAN, INC.
 ALL RIGHTS RESERVED.
 LICENSE NO. 001-001213-00000000-00000000-00000000-00000000
 4/10/2017 10:53:38 PM I:\WORK\MOVEMENT\1007433\LISTR\001scope\CADD-SURVEY\DRAWINGS\1007433-T-S00.dgn

BAXTER & WOODMAN Consulting Engineers	DESIGNED - MWP	REVISED - IDOT REVIEW 6-29-15
	DRAWN - KAR	REVISED - CITY REVIEW 6-29-15
	CHECKED - TMS	REVISED -
	DATE - 6/2/15	FILE - 1007433HT-S00.dgn

**STATE OF ILLINOIS
DEPARTMENT OF TRANSPORTATION**

SUMMARY OF QUANTITIES

SCALE: NONE STA. TO STA.

MUN. RTE.	SECTION	COUNTY	TOTAL SHEETS	SHEET NO.
1630	10-00059-00-LT	KANKAKEE	20	3
FED. ROAD DIST. NO.			ILLINOIS FED. AID PROJECT TE-0003095	
			CONTRACT NO. 87633	

SUMMARY OF QUANTITIES

CODE NUMBER	PAY ITEM	UNIT	TOTAL QUANTITY	CONSTRUCTION TYPE CODE	
				ROADWAY	ITEP
* 78000200	THERMOPLASTIC PAVEMENT MARKING - LINE 4"	FOOT	168		168
* 78000400	THERMOPLASTIC PAVEMENT MARKING - LINE 6"	FOOT	32		32
* A2006524	TREE, QUERCUS BICOLOR (SWAMP WHITE OAK), 3" CALIPER, BALLED AND BURLAPPED	EACH	4		4
* 81028220	UNDERGROUND CONDUIT, GALVANIZED STEEL, 3" DIA.	FOOT	60		60
* 81603065	UNIT DUCT, 600V, 2-1C NO.2, 1/C NO.2 GROUND, (XLP-TYPE USE), 1 1/4" DIA. POLYETHYLENE	FOOT	770		770
* 88600100	DETECTOR LOOP, TYPE I	FOOT	70		70
# * 89502380	REMOVE EXISTING HANDHOLE	EACH	4		4
# Z0030850	TEMPORARY INFORMATION SIGNING	SQ FT	52		52
# * X0323927	MAINTENANCE OF LIGHTING SYSTEM	EACH	1		1
# X4021000	TEMPORARY ACCESS (PRIVATE ENTRANCE)	EACH	38		38
# X4022000	TEMPORARY ACCESS (COMMERCIAL ENTRANCE)	EACH	2		2
# X4404700	SIDEWALK REMOVAL (SPECIAL)	SQ FT	10,380		10,380
# * X8140115	HANDHOLE TO BE ADJUSTED	EACH	4		4
# * X8860100	LOOP DETECTOR TESTING	EACH	1		1
# * X8950130	MODIFY EXISTING LIGHTING CONTROLLER	EACH	1		1

* SPECIALTY ITEM
INDICATES SPECIAL PROVISION

CODE NUMBER	PAY ITEM	UNIT	TOTAL QUANTITY	CONSTRUCTION TYPE CODE	
				ROADWAY	ITEP
# * X8951011	REMOVE AERIAL CABLE	FOOT	100		100
# XX004467	BRICK PAVER SIDEWALK ON RIGID BASE	SQ FT	1,884		1,884
# XX005878	CAST IRON TREE GRATES	EACH	4		4
# Xx009047	FILLING EXISTING VAULT	CU YD	250		250

* SPECIALTY ITEM
INDICATES SPECIAL PROVISION

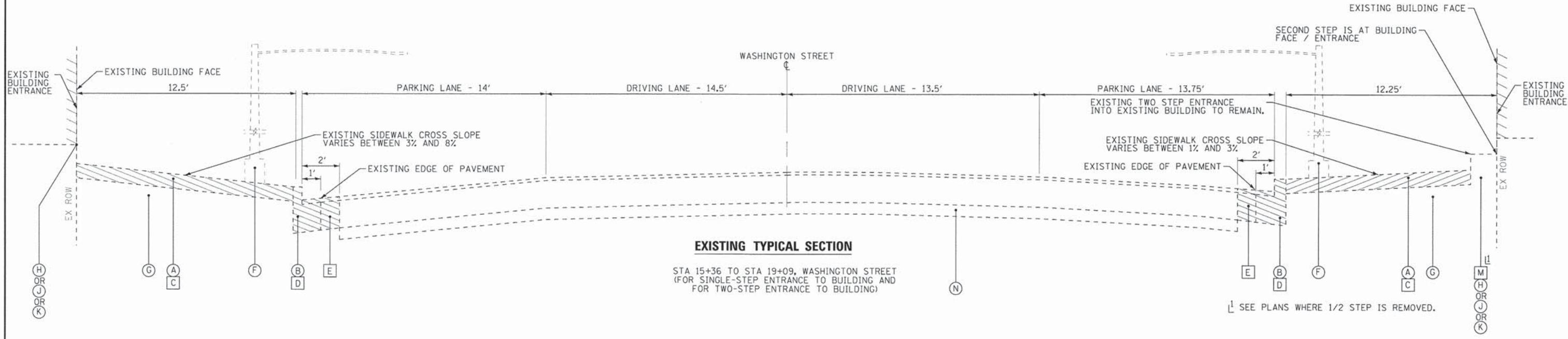
C:\PROJECTS\2015\BAXTER & WOODMAN, INC.\...
 ...\\P:\DTS\100743_P\8662_P\...
 ...\\M:\C\AMOVEN\100743\181r\...
 7/6/2015 3:05:46 PM 100743SHT-S00.dgn

BAXTER & WOODMAN Consulting Engineers	DESIGNED - MWP	REVISED - IDOT REVIEW 6-29-15
	DRAWN - KAR	REVISED - CITY REVIEW 6-29-15
	CHECKED - TMS	REVISED
	DATE - 6/2/15	FILE - 100743SHT-S00.dgn

**STATE OF ILLINOIS
DEPARTMENT OF TRANSPORTATION**

SUMMARY OF QUANTITIES	
SCALE: NONE	STA. TO STA.

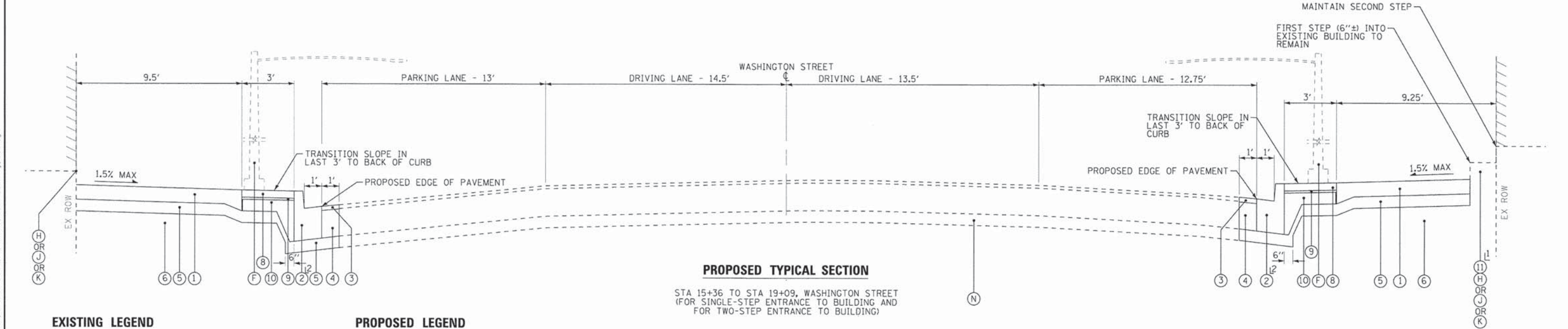
MUN. RTE.	SECTION	COUNTY	TOTAL SHEETS	SHEET NO.
1630	10-00059-00-LT	KANKAKEE	20	4
FED. ROAD DIST. NO. (ILLINOIS) FED. AID PROJECT TE-00031095			CONTRACT NO. 87633	



EXISTING TYPICAL SECTION

STA 15+36 TO STA 19+09, WASHINGTON STREET
(FOR SINGLE-STEP ENTRANCE TO BUILDING AND FOR TWO-STEP ENTRANCE TO BUILDING)

SEE PLANS WHERE 1/2 STEP IS REMOVED.



PROPOSED TYPICAL SECTION

STA 15+36 TO STA 19+09, WASHINGTON STREET
(FOR SINGLE-STEP ENTRANCE TO BUILDING AND FOR TWO-STEP ENTRANCE TO BUILDING)

SEE PLANS WHERE 1/2 STEP IS REPLACED
B-6.24 IN IL 1/17 RETURNS

EXISTING LEGEND

- (A) EXISTING SIDEWALK (THICKNESS VARIES, 8"±)
- (B) EXISTING COMBINATION CURB AND GUTTER (WASHINGTON STREET APPEARS TO BE OVERLAID B-6.12) (IL 1/17 APPEARS TO BE B-6.24)
- (C) SIDEWALK REMOVAL (SPECIAL)
- (D) COMBINATION CURB AND GUTTER REMOVAL
- (E) PAVEMENT REMOVAL
- (F) EXISTING STREET LIGHT TO REMAIN
- (G) EXISTING VAULTED SIDEWALK OR SUB-GRADE
- (H) EXISTING HISTORIC STONE STEP TO REMAIN
- (J) EXISTING CAST IRON SILL TO REMAIN
- (K) EXISTING STEP TO REMAIN
- (L) EXISTING FLUSH ENTRANCE
- (M) EXISTING HALF STEP IS REMOVED (PAID FOR AS (C))
- (N) EXISTING PAVEMENT TO REMAIN
- ITEM TO BE REMOVED

PROPOSED LEGEND

- (1) PORTLAND CEMENT CONCRETE SIDEWALK 5 INCH
- (2) COMBINATION CONCRETE CURB AND GUTTER, TYPE B-6.12 (GUTTER FLAG SHALL MATCH EXISTING WITH 9" MIN.)
- (3) INCIDENTAL HOT-MIX ASPHALT SURFACING (3" MIN.)
- (4) PORTLAND CEMENT CONCRETE BASE COURSE 6 1/4" (THICKNESS TO BE ADJUSTED BASED ON EXISTING PAVEMENT THICKNESS)
- (5) AGGREGATE BASE COURSE, TYPE B 4"
- (6) FILLING EXISTING VAULT (INCLUDES EXPANDED POLYSTYRENE FILL) (AS DETERMINED BY THE ENGINEER)
- (7) TREE WITH TREE GRATE
- (8) BRICK PAVER SIDEWALK ON RIGID BASE
- (9) HOT-MIX ASPHALT SETTING BED AND NOEPRENE ASPHALT ADHESIVE (INCLUDED IN (8))
- (10) RIGID BASE - PORTLAND CEMENT CONCRETE BASE 4 INCH (THICKENED EDGE) (INCLUDED IN (8))
- (11) HALF STEP IS REPLACED (PAID FOR AS (1))

HOT-MIX ASPHALT MIXTURE REQUIREMENTS	
MIXTURE TYPE	AIR VOIDS @ Ndes
PATCHING	
INCIDENTAL HMA SURFACING (HMA SURFACE, MIX "C", N50) - 3"	4% @ 50 Gyr.

COPYRIGHT © 2015, BY BAXTER & WOODMAN, INC.
 STATE OF ILLINOIS PROFESSIONAL DESIGN FIRM
 LICENSE NO. - 88-001232-EXP-RES 74740-PAV
 7/22/2015
 \\workera\workera\00743\117\res\scopel\CADD\SURVEY\DRAWINGS\100743SHT-TypSec.dgn

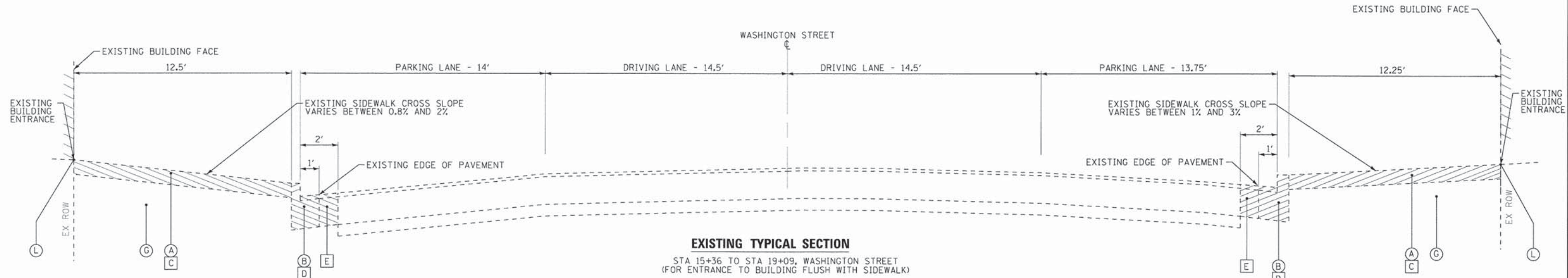


DESIGNED - MWP	REVISED - IDOT REVIEW 6-29-15
DRAWN - KAR	REVISED - CITY REVIEW 6-29-15
CHECKED - TMS	REVISED -
DATE - 6/2/15	FILE - 100743SHT-TypSec.dgn

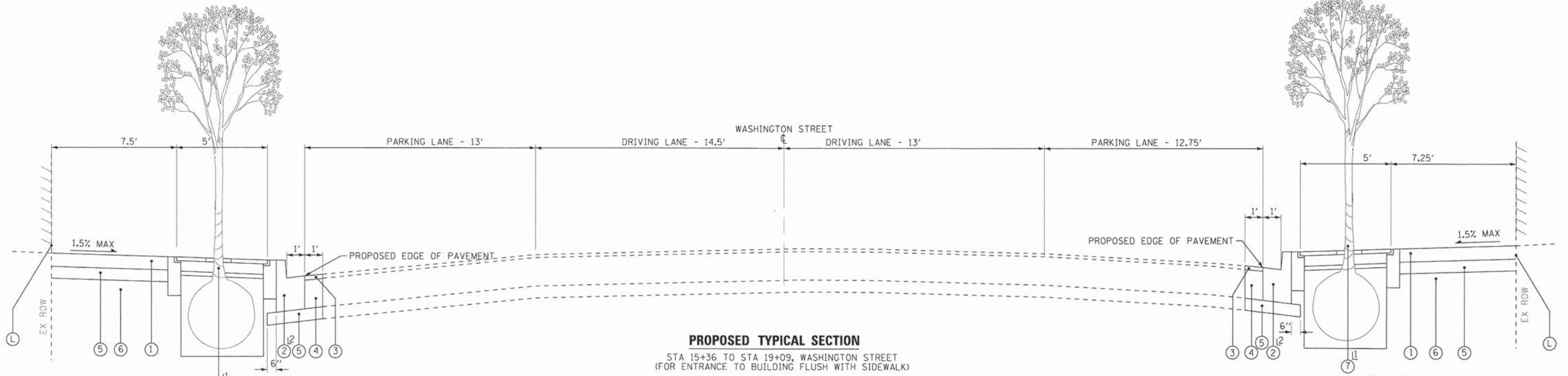
STATE OF ILLINOIS
DEPARTMENT OF TRANSPORTATION

TYPICAL SECTIONS AND HOT - MIX ASPHALT MIXTURE REQUIREMENTS
SCALE: NONE STA. TO STA.

MUN. RTE.	SECTION	COUNTY	TOTAL SHEETS	SHEET NO.
1630	10-00059-00-LT	KANKAKEE	20	5
FED. ROAD DIST. NO. [ILLINOIS] FED. AID PROJECT TE-0003(095)			CONTRACT NO. 87633	



EXISTING TYPICAL SECTION
 STA 15+36 TO STA 19+09, WASHINGTON STREET
 (FOR ENTRANCE TO BUILDING FLUSH WITH SIDEWALK)



PROPOSED TYPICAL SECTION
 STA 15+36 TO STA 19+09, WASHINGTON STREET
 (FOR ENTRANCE TO BUILDING FLUSH WITH SIDEWALK)

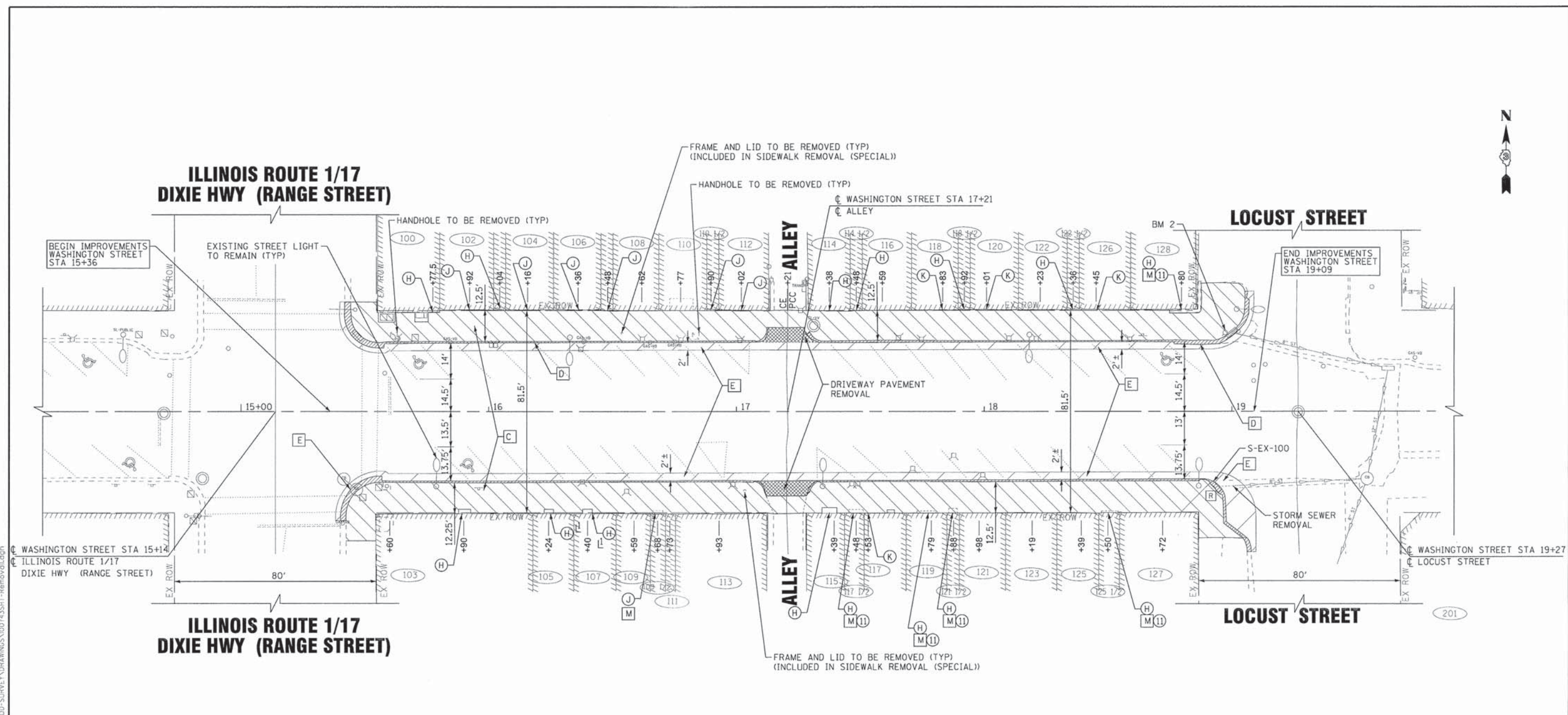
- EXISTING LEGEND**
- (A) EXISTING SIDEWALK (THICKNESS VARIES, 8"±)
 - (B) EXISTING COMBINATION CURB AND GUTTER (WASHINGTON STREET APPEARS TO BE OVERLAID B-6.12) (IL 1/17 APPEARS TO BE B-6.24)
 - (C) SIDEWALK REMOVAL (SPECIAL)
 - (D) COMBINATION CURB AND GUTTER REMOVAL
 - (E) PAVEMENT REMOVAL
 - (F) EXISTING STREET LIGHT TO REMAIN
 - (G) EXISTING VAULTED SIDEWALK OR SUB-GRADE
 - (H) EXISTING HISTORIC STONE STEP TO REMAIN
 - (J) EXISTING CAST IRON SILL TO REMAIN
 - (K) EXISTING STEP TO REMAIN
 - (L) EXISTING FLUSH ENTRANCE
 - (M) EXISTING HALF STEP IS REMOVED (PAID FOR AS (C))
 - (N) EXISTING PAVEMENT TO REMAIN
 - (/) ITEM TO BE REMOVED

- PROPOSED LEGEND**
- (1) PORTLAND CEMENT CONCRETE SIDEWALK 5 INCH
 - (2) COMBINATION CONCRETE CURB AND GUTTER, TYPE B-6.12 (GUTTER FLAG SHALL MATCH EXISTING WITH 9" MIN.)
 - (3) INCIDENTAL HOT-MIX ASPHALT SURFACING (3" MIN.)
 - (4) PORTLAND CEMENT CONCRETE BASE COURSE 6 1/4" (THICKNESS TO BE ADJUSTED BASED ON EXISTING PAVEMENT THICKNESS)
 - (5) AGGREGATE BASE COURSE, TYPE B 4"
 - (6) FILLING EXISTING VAULT (INCLUDES EXPANDED POLYSTYRENE FILL) (AS DETERMINED BY THE ENGINEER)
 - (7) TREE WITH TREE GRATE
 - (8) BRICK PAVER SIDEWALK ON RIGID BASE
 - (9) HOT-MIX ASPHALT SETTING BED AND NOEPRENE ASPHALT ADHESIVE (INCLUDED IN (8))
 - (10) RIGID BASE - PORTLAND CEMENT CONCRETE BASE 4 INCH (THICKENED EDGE) (INCLUDED IN (8))
 - (11) HALF STEP IS REPLACED (PAID FOR AS (1))

11 (F) AND (B) NOT SHOWN
 12 B-6.24 IN IL 1/17 RETURNS

COPYRIGHT © 2015 BY BAXTER & WOODMAN, INC.
 STATE OF ILLINOIS - PROFESSIONAL DESIGN FIRM
 LICENSE NO. - 184-00121 - EXPIRES 4/30/2017
 7/22/2015 1:47:37 AM
 ...xpia-dr-v\pof-bw\Default.plt
 ...N\LOT5\00743_Pnc982_Pen.tbl
 H:\Mokenc\WORK\100743\11str\eat\scope\CA00-SURVEY\DRAWINGS\100743SHT-TypSec.dgn

BAXTER & WOODMAN Consulting Engineers	DESIGNED - MWP	REVISED - IDOT REVIEW 6-29-15	STATE OF ILLINOIS DEPARTMENT OF TRANSPORTATION		TYPICAL SECTIONS		MUN. RTE.	SECTION	COUNTY	TOTAL SHEETS	SHEET NO.
	DRAWN - KAR	REVISED - CITY REVIEW 6-29-15					1630	10-00059-00-LT	KANKAKEE	20	6
	CHECKED - TMS	REVISED -					CONTRACT NO. 87633				
	DATE - 6/2/15	FILE - 100743SHT-TypSec.dgn			SCALE: NONE	STA. TO STA.	FED. ROAD DIST. NO. ILLINOIS FED. AID PROJECT TE-00031095				



COPYRIGHT © 2015 BY BAXTER & WOODMAN, INC.
 STATE OF ILLINOIS - PROFESSIONAL DESIGN FIRM
 LICENSE NO. 384-00121 - EXPIRES 4/30/2017
 48616 7/8/2015 3:05:59 PM
 ...:\plott\p\def-BW Default.dwg
 ...:\PL015\100743_Phase2_Plan.dwg
 ...:\Mokeno\MOEMEN\100743\11\str\ee\scope\SCADD\SURVEY\DRAWINGS\100743SHT-Removal.dgn

- EXISTING LEGEND**
- (A) EXISTING SIDEWALK (THICKNESS VARIES, 8"±)
 - (B) EXISTING COMBINATION CURB AND GUTTER (WASHINGTON STREET APPEARS TO BE OVERLAID B-6.12) (IL 1/17 APPEARS TO BE B-6.24)
 - (C) SIDEWALK REMOVAL (SPECIAL)
 - (D) COMBINATION CURB AND GUTTER REMOVAL
 - (E) PAVEMENT REMOVAL
 - (F) EXISTING STREET LIGHT TO REMAIN
 - (G) EXISTING VAULTED SIDEWALK OR SUB-GRADE
 - (H) EXISTING HISTORIC STONE STEP TO REMAIN
 - (J) EXISTING CAST IRON SILL TO REMAIN
 - (K) EXISTING STEP TO REMAIN
 - (L) EXISTING FLUSH ENTRANCE
 - (M) EXISTING HALF STEP IS REMOVED (PAID FOR AS (C))
 - (N) EXISTING PAVEMENT TO REMAIN
 - (P) EXISTING FRAME TO REMAIN
 - ▭ ITEM TO BE REMOVED

- PROPOSED LEGEND**
- ① PORTLAND CEMENT CONCRETE SIDEWALK 5 INCH
 - ② COMBINATION CONCRETE CURB AND GUTTER, TYPE B-6.12 (GUTTER FLAG SHALL MATCH EXISTING WITH 9" MIN.)
 - ③ INCIDENTAL HOT-MIX ASPHALT SURFACING (3" MIN.)
 - ④ PORTLAND CEMENT CONCRETE BASE COURSE 6 1/4" (THICKNESS TO BE ADJUSTED BASED ON EXISTING PAVEMENT THICKNESS)
 - ⑤ AGGREGATE BASE COURSE, TYPE B 4"
 - ⑥ FILLING EXISTING VAULT (INCLUDES EXPANDED POLYSTYRENE FILL) (AS DETERMINED BY THE ENGINEER)
 - ⑦ TREE WITH TREE GRATE
 - ⑧ BRICK PAVER SIDEWALK ON RIGID BASE
 - ⑨ HOT-MIX ASPHALT SETTING BED AND NOEPRENE ASPHALT ADHESIVE (INCLUDED IN (B))
 - ⑩ RIGID BASE - PORTLAND CEMENT CONCRETE BASE 4 INCH (THICKENED EDGE) (INCLUDED IN (B))
 - ⑪ HALF STEP IS REPLACED (PAID FOR AS (L))
 - ⑫ THERMOPLASTIC PAVEMENT MARKING - LINE 4" WHITE
 - ⑬ THERMOPLASTIC PAVEMENT MARKING - LINE 6" WHITE



DESIGNED - MWP	REVISED - IDOT REVIEW 6-29-15
DRAWN - KAR	REVISED - CITY REVIEW 6-29-15
CHECKED - TMS	REVISED -
DATE - 6/2/15	FILE - 100743SHT-Removal.dgn

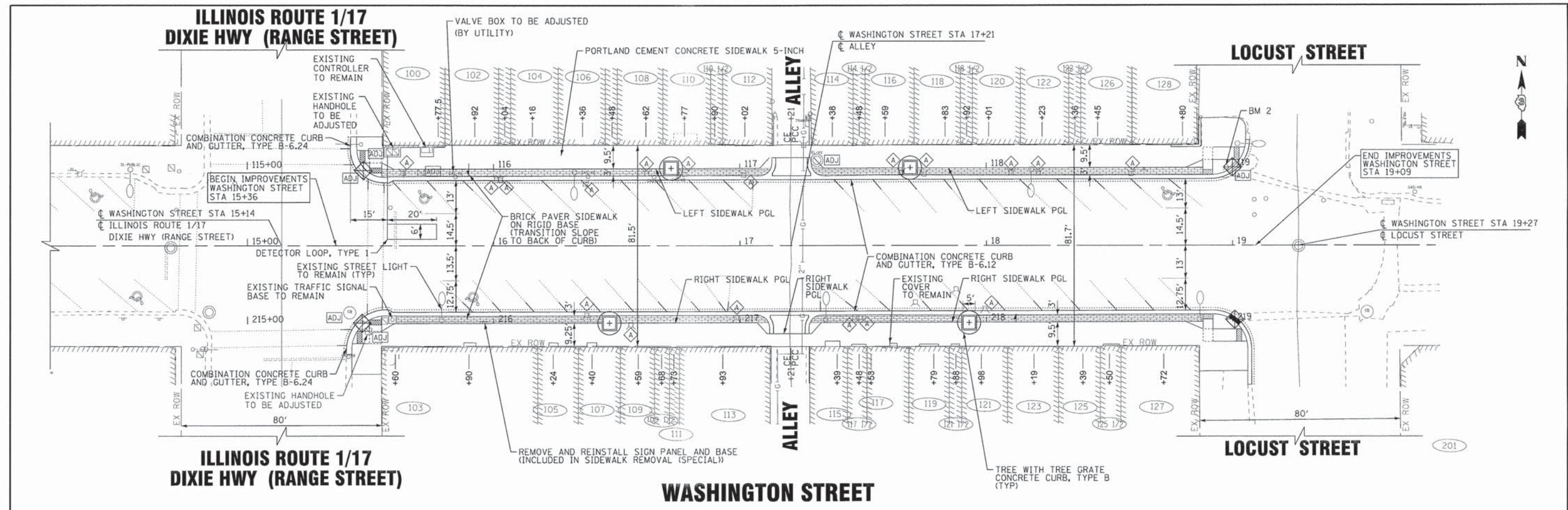
STATE OF ILLINOIS
DEPARTMENT OF TRANSPORTATION

REMOVAL PLAN - WASHINGTON STREET

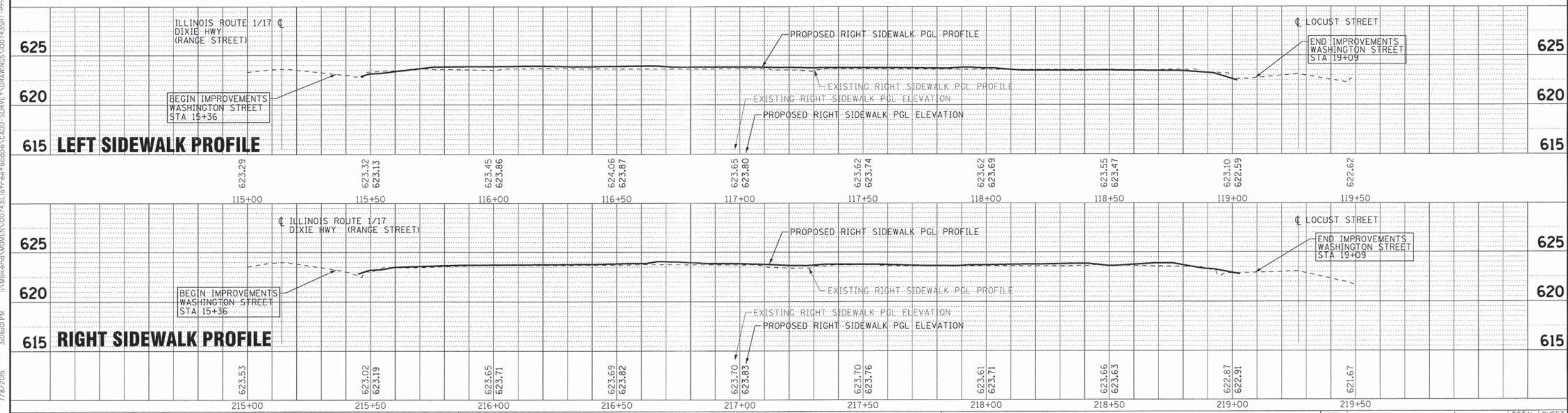
SCALE: 1" = 20'

STA. 15+00 TO STA. 19+50

MUN. RTE.	SECTION	COUNTY	TOTAL SHEETS	SHEET NO.
1630	10-00059-00-LT	KANKAKEE	20	7
FED. ROAD DIST. NO. ILLINOIS FED. AID PROJECT TE-00031095			CONTRACT NO. 87633	



NOTE:
SEE PLAN SHEETS 9 - 12
FOR UNDER SIDEWALK VAULT CONDITIONS
AND PROFILE DETAILS



COPYRIGHT © 2015 BY BAXTER & WOODMAN, INC.
 STATE OF ILLINOIS - PROFESSIONAL DESIGN FIRM
 LICENSE NO. 184-00121 - EXPIRES 6/30/2017
 4/8/15 3:06:00 PM 7/8/2015

BAXTER & WOODMAN Consulting Engineers	DESIGNED - MWP	REVISED - IDOT REVIEW 6-29-15	STATE OF ILLINOIS DEPARTMENT OF TRANSPORTATION	ROADWAY PLAN AND PROFILE - WASHINGTON STREET		MUN. RTE. 1630	SECTION 10-00059-00-LT	COUNTY KANKAKEE	TOTAL SHEETS 20	SHEET NO. 8
	DRAWN - KAR	REVISED - CITY REVIEW 6-29-15		SCALE: H: 1"=20' V: 1"=5' STA. 15+36 TO STA. 19+09		FED. ROAD DIST. NO.	ILLINOIS FED. AID PROJECT TE-00031095F	CONTRACT NO. 87633		
CHECKED - TMS DATE - 6/2/15	FILE - 100743SHT-PP1_20SCALE.dgn									

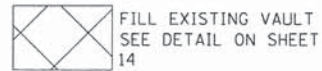
LEGEND

PGL PROFILE GRADE LINE
 TS TOP OF STEP/SILL
 FL FLOW LINE
 EOP EDGE OF PAVEMENT
 BC BACK OF CURB
 FW FACE OF WALK
 BW BACK OF WALK
 PR PROPOSED
 EX EXISTING

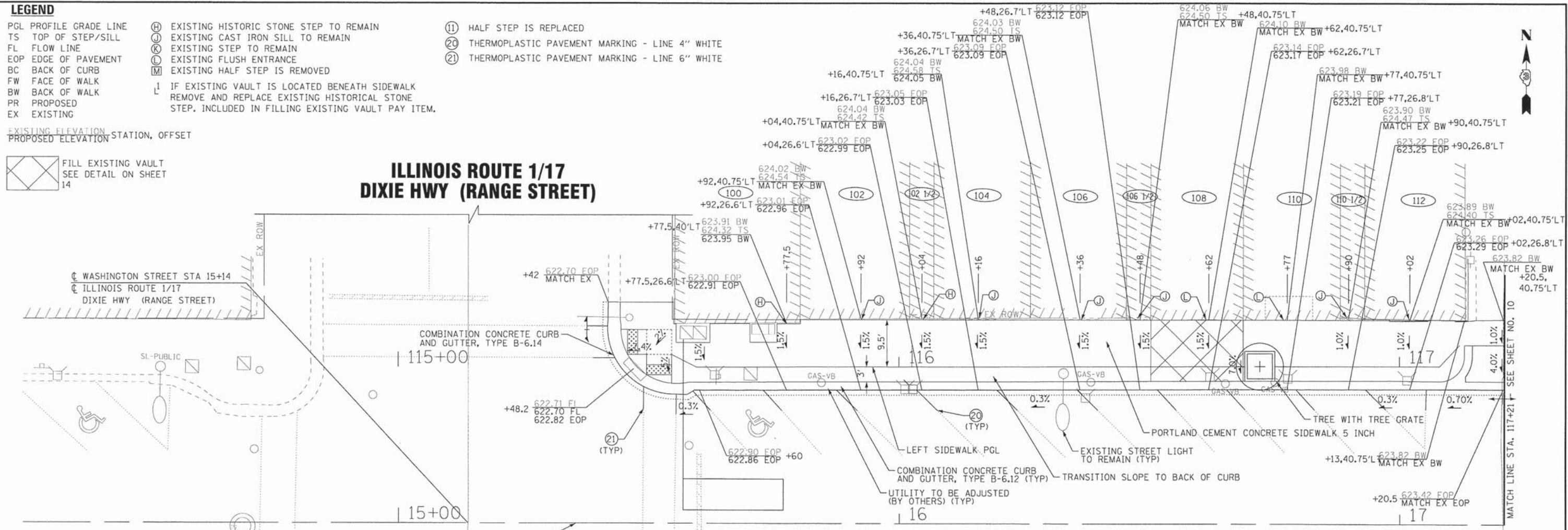
(H) EXISTING HISTORIC STONE STEP TO REMAIN
 (J) EXISTING CAST IRON SILL TO REMAIN
 (K) EXISTING STEP TO REMAIN
 (L) EXISTING FLUSH ENTRANCE
 (M) EXISTING HALF STEP IS REMOVED
 L IF EXISTING VAULT IS LOCATED BENEATH SIDEWALK REMOVE AND REPLACE EXISTING HISTORICAL STONE STEP. INCLUDED IN FILLING EXISTING VAULT PAY ITEM.

(11) HALF STEP IS REPLACED
 (20) THERMOPLASTIC PAVEMENT MARKING - LINE 4" WHITE
 (21) THERMOPLASTIC PAVEMENT MARKING - LINE 6" WHITE

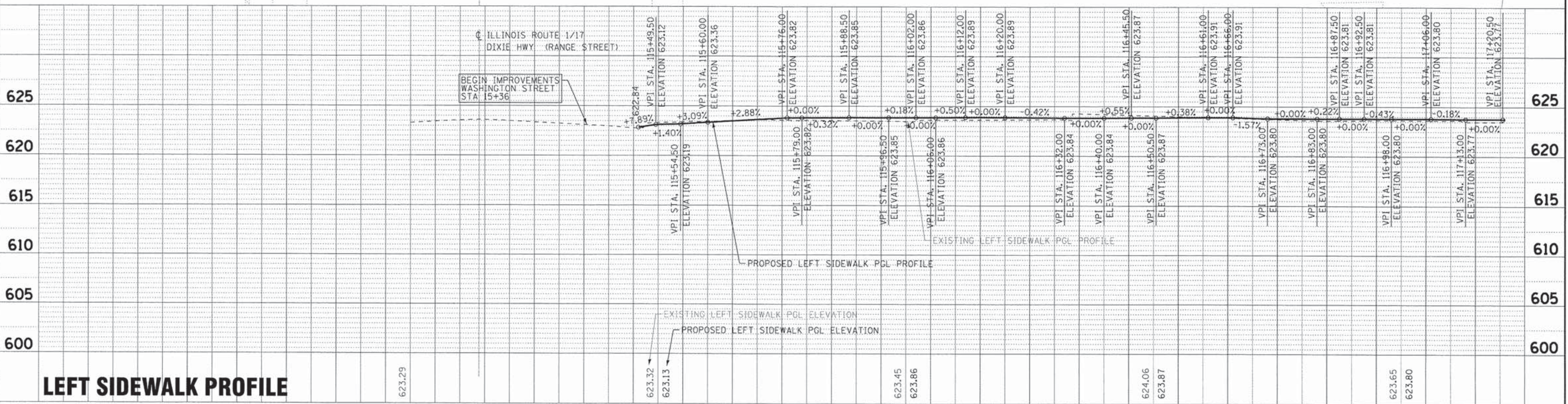
EXISTING ELEVATION
 PROPOSED ELEVATION STATION, OFFSET



**ILLINOIS ROUTE 1/17
 DIXIE HWY (RANGE STREET)**



WASHINGTON STREET



LEFT SIDEWALK PROFILE

COPYRIGHT © 2015 BY BAXTER & WOODMAN, INC.
 STATE OF ILLINOIS - PROFESSIONAL DESIGN FIRM
 LICENSE NO. 184-00121 - EXPIRES 4/30/2017
 7/7/2015 3:40:31 PM
 ...\\pio-triv-v\pof-bw\del\aut\p1.dgn
 ...\\pio-triv-v\pof-bw\del\aut\p1.dgn
 ...\\pio-triv-v\pof-bw\del\aut\p1.dgn
 ...\\pio-triv-v\pof-bw\del\aut\p1.dgn

BAXTER & WOODMAN Consulting Engineers	DESIGNED - MWP	REVISED - IDOT REVIEW 6-29-15
	DRAWN - KAR	REVISED - CITY REVIEW 6-29-15
	CHECKED - TMS	REVISED -
	DATE - 6/2/15	FILE - 100743SHT-PP1.dgn

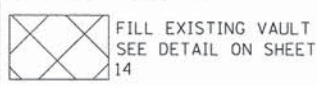
115+00	115+50	116+00	116+50	117+00
STATE OF ILLINOIS DEPARTMENT OF TRANSPORTATION				

ROADWAY PLAN AND PROFILE - WASHINGTON STREET	
SCALE: H: 1"=10' V: 1"=5'	STA. 115+00 TO STA. 117+21

MUN. RTE. 1630	SECTION 10-00059-00-LT	COUNTY KANKAKEE	TOTAL SHEETS 20	SHEET NO. 9
FED. ROAD DIST. NO. ILLINOIS FED. AID PROJECT TE-00031095		CONTRACT NO. 87633		

- LEGEND**
- PGL PROFILE GRADE LINE
 - TS TOP OF STEP/SILL
 - FL FLOW LINE
 - EOP EDGE OF PAVEMENT
 - BC BACK OF CURB
 - FW FACE OF WALK
 - BW BACK OF WALK
 - PR PROPOSED
 - EX EXISTING

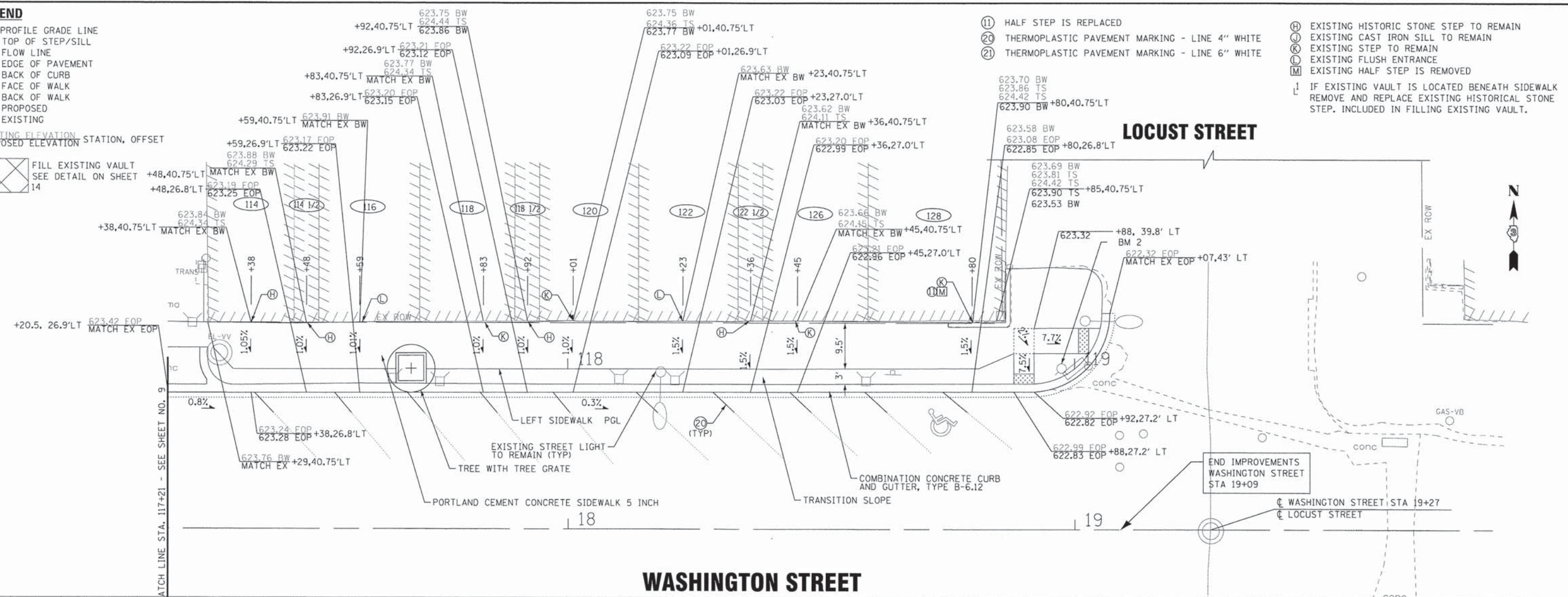
EXISTING ELEVATION STATION, OFFSET
PROPOSED ELEVATION



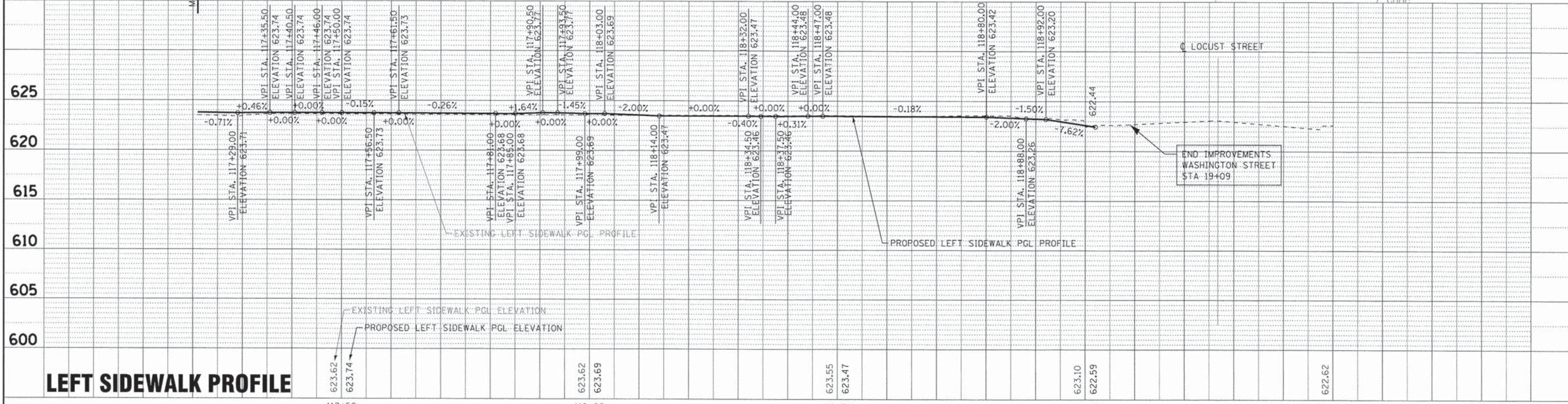
- ⑪ HALF STEP IS REPLACED
- ⑫ THERMOPLASTIC PAVEMENT MARKING - LINE 4" WHITE
- ⑬ THERMOPLASTIC PAVEMENT MARKING - LINE 6" WHITE

- Ⓜ EXISTING HISTORIC STONE STEP TO REMAIN
- Ⓝ EXISTING CAST IRON SILL TO REMAIN
- Ⓚ EXISTING STEP TO REMAIN
- Ⓛ EXISTING FLUSH ENTRANCE
- Ⓜ EXISTING HALF STEP IS REMOVED
- Ⓛ IF EXISTING VAULT IS LOCATED BENEATH SIDEWALK REMOVE AND REPLACE EXISTING HISTORICAL STONE STEP. INCLUDED IN FILLING EXISTING VAULT.

LOCUST STREET



WASHINGTON STREET



LEFT SIDEWALK PROFILE

BAXTER & WOODMAN
Consulting Engineers

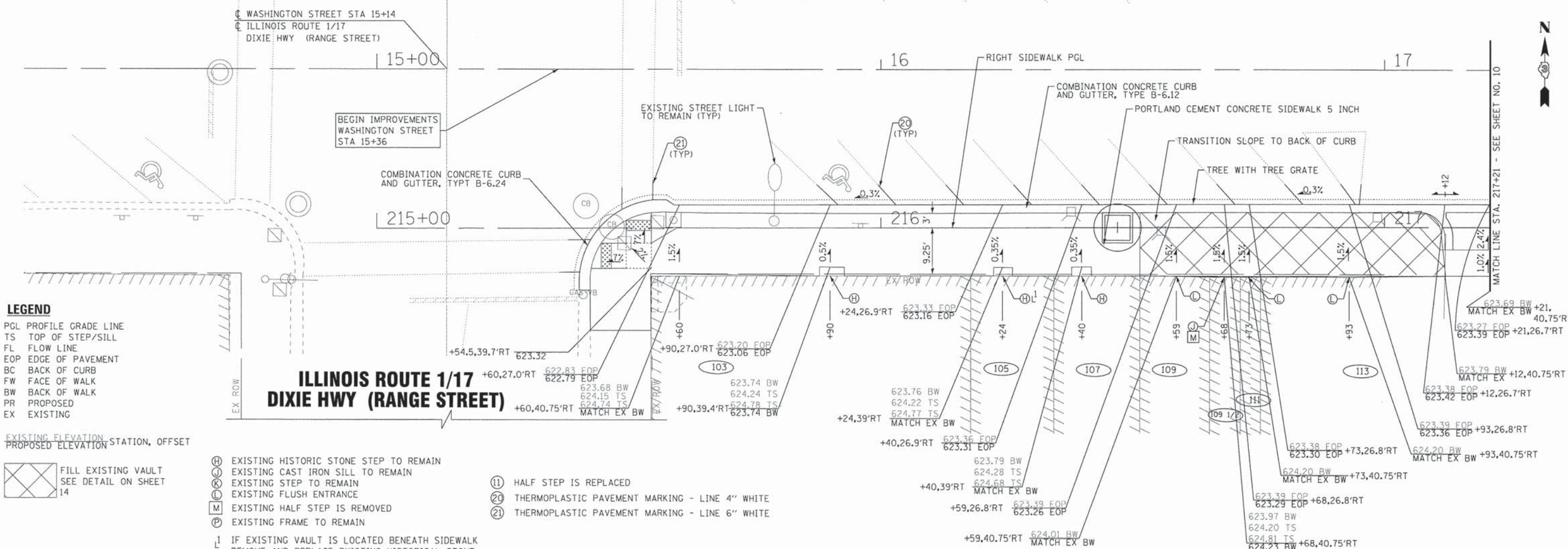
DESIGNED - MWP	REVISED - IDOT REVIEW 6-29-15
DRAWN - KAR	REVISED - CITY REVIEW 6-29-15
CHECKED - TMS	REVISED -
DATE - 6/2/15	FILE - 100743SHT-PP2.dgn

STATE OF ILLINOIS
DEPARTMENT OF TRANSPORTATION

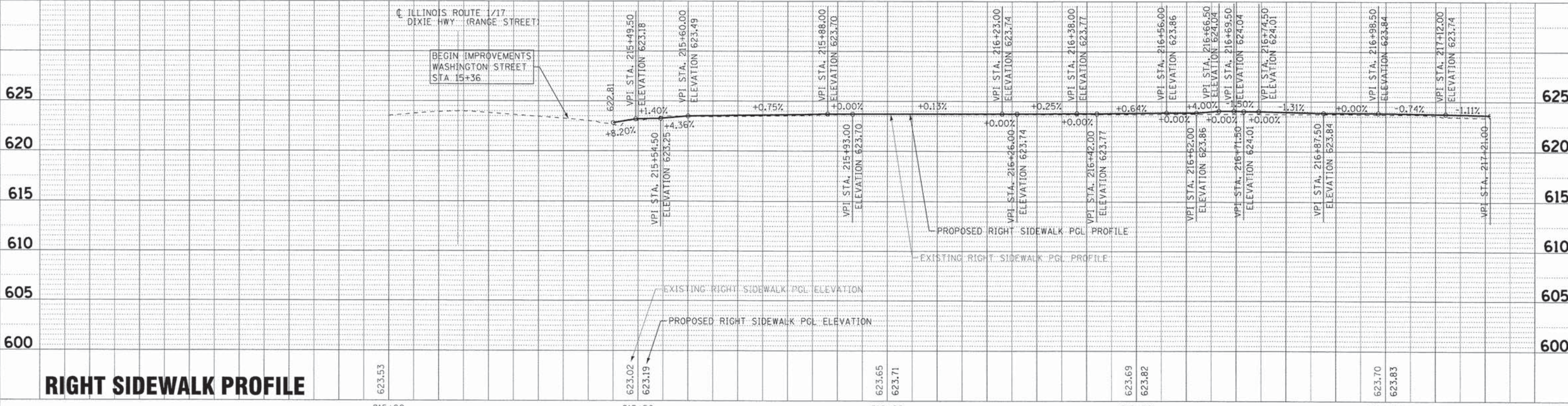
ROADWAY PLAN AND PROFILE
- WASHINGTON STREET

SCALE: H: 1"=10' V: 1"=5'	STA. 117+21 TO STA. 119+82	FED. ROAD DIST. NO. [ILLINOIS] FED. AID PROJECT TE-0003095)
---------------------------	----------------------------	---

COPYRIGHT © 2015, BY BAXTER & WOODMAN, INC.
 STATE OF ILLINOIS - PROFESSIONAL DESIGN FIRM
 LICENSE NO. - 184-00121 - EXPIRES 4/30/2017
 17/2/2015 3:06:32 PM
 ...\\p10-drv-v\pdrf-bw_De_faulf.p1
 ...\\p10-drv-v\00743\Proc962_7.en.tb
 In:Work\p10-drv-v\100743\118\118.dgn SURVEY DRAWINGS\00743SHT-PP2.dgn



WASHINGTON STREET



RIGHT SIDEWALK PROFILE

COPYRIGHT © 2015 BY BAXTER & WOODMAN, INC.
 STATE OF ILLINOIS - PROFESSIONAL DESIGN FIRM
 LICENSE NO. 184-00121 - EXPIRES 4/30/2017
 7/21/2015 3:40:33 PM 560x9"



DESIGNED - MWP	REVISED - IDOT REVIEW 6-29-15
DRAWN - KAR	REVISED - CITY REVIEW 6-29-15
CHECKED - TMS	REVISED -
DATE - 6/2/15	FILE - 100743SHT-PP3.dgn

STATE OF ILLINOIS
DEPARTMENT OF TRANSPORTATION

ROADWAY PLAN AND PROFILE - WASHINGTON STREET

SCALE: H: 1"=10' V: 1"=5' STA. 215+00 TO STA. 217+21

MUN. RTE.	SECTION	COUNTY	TOTAL SHEETS	SHEET NO.
1630	10-00059-00-LT	KANKAKEE	20	11
FED. ROAD DIST. NO.		ILLINOIS FED. AID PROJECT TE-0003(X)951		
		CONTRACT NO. 87633		

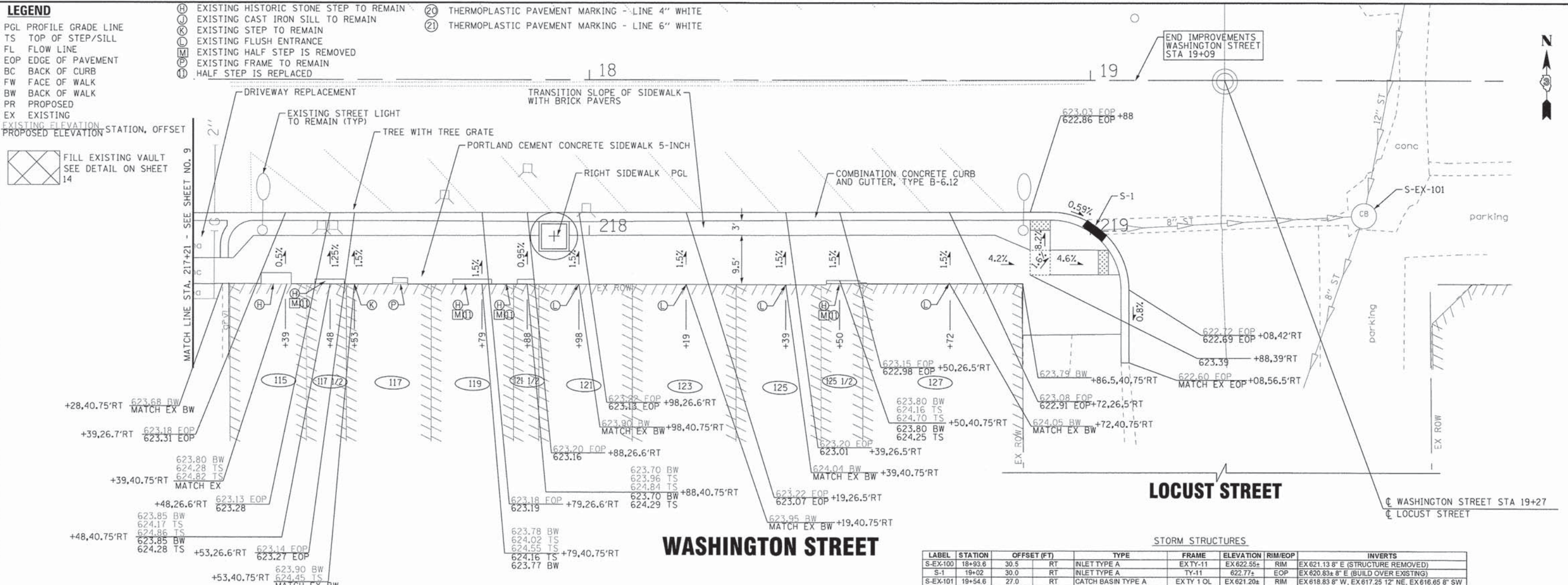
LEGEND

- PGL PROFILE GRADE LINE
- TS TOP OF STEP/SILL
- FL FLOW LINE
- EOP EDGE OF PAVEMENT
- BC BACK OF CURB
- FW FACE OF WALK
- BW BACK OF WALK
- PR PROPOSED
- EX EXISTING

- (H) EXISTING HISTORIC STONE STEP TO REMAIN
- (C) EXISTING CAST IRON SILL TO REMAIN
- (E) EXISTING STEP TO REMAIN
- (F) EXISTING FLUSH ENTRANCE
- (G) EXISTING HALF STEP IS REMOVED
- (I) EXISTING FRAME TO REMAIN
- (J) HALF STEP IS REPLACED
- (20) THERMOPLASTIC PAVEMENT MARKING - LINE 4" WHITE
- (21) THERMOPLASTIC PAVEMENT MARKING - LINE 6" WHITE

EXISTING ELEVATION
PROPOSED ELEVATION
STATION, OFFSET

FILL EXISTING VAULT
SEE DETAIL ON SHEET 14

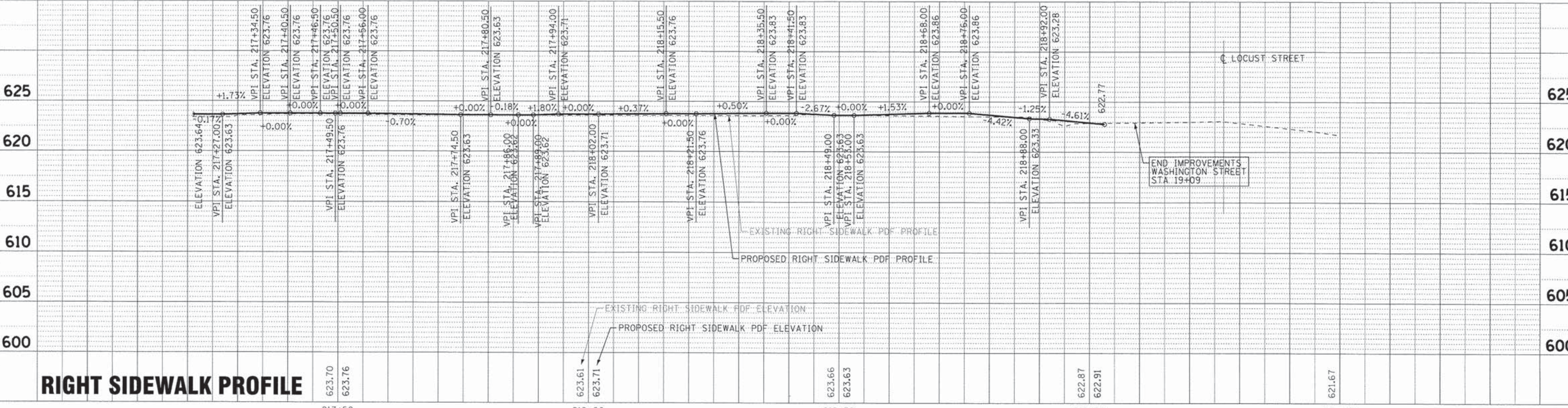


LOCUST STREET

WASHINGTON STREET

STORM STRUCTURES

LABEL	STATION	OFFSET (FT)	TYPE	FRAME	ELEVATION	RIM/EOP	INVERTS
S-EX-100	18+93.6	30.5	RT	INLET TYPE A	EX TY-11	EX 622.55+	RIM EX 621.13 8" E (STRUCTURE REMOVED)
S-1	19+02	30.0	RT	INLET TYPE A	TY-11	622.77+	EOP EX 620.83+ 8" E (BUILD OVER EXSTNG)
S-EX-101	19+54.6	27.0	RT	CATCH BASIN TYPE A	EX TY 1 0L	EX 621.20+	RIM EX 618.83 8" W, EX 617.25 12" NE, EX 616.65 8" SW

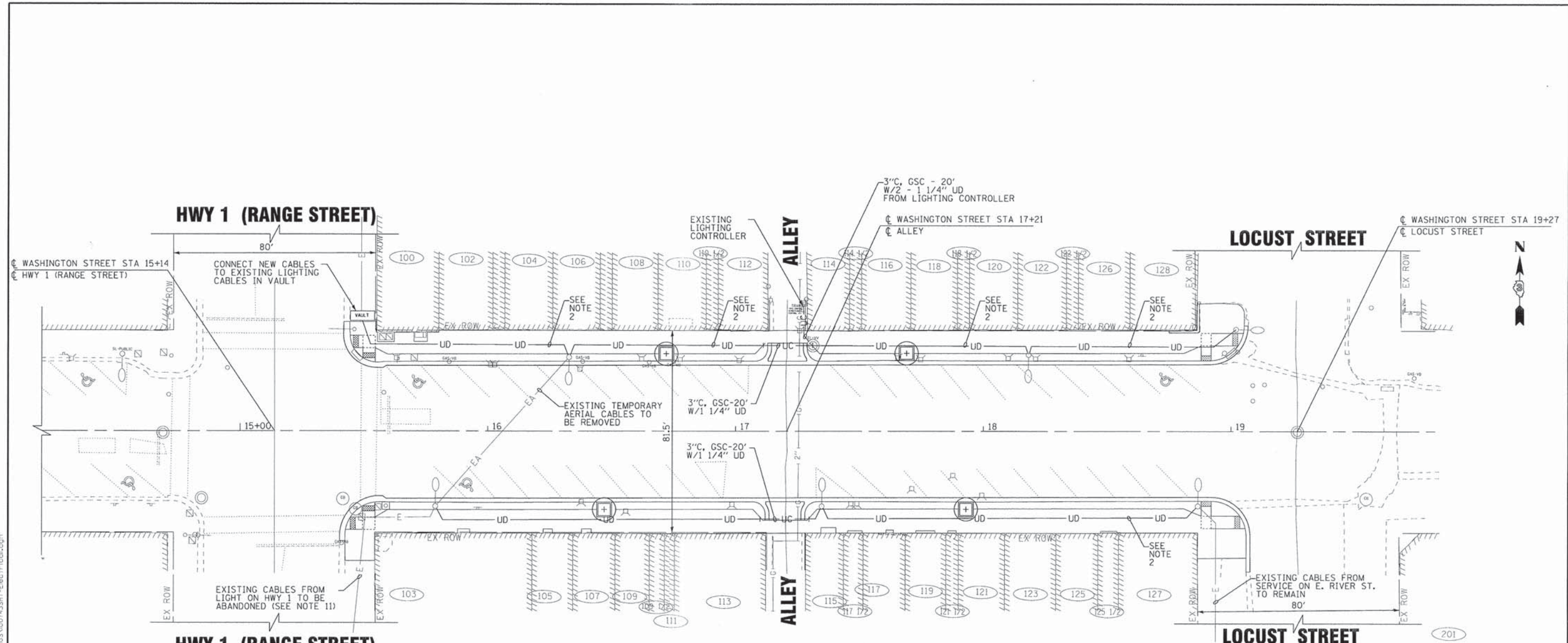


RIGHT SIDEWALK PROFILE

<p>BAXTER & WOODMAN Consulting Engineers</p>	DESIGNED - MWP	REVISED - IDOT REVIEW 6-29-15	<p>STATE OF ILLINOIS DEPARTMENT OF TRANSPORTATION</p>	<p>ROADWAY PLAN AND PROFILE - WASHINGTON STREET</p>		MUN. RTE.	SECTION	COUNTY	TOTAL SHEETS	SHEET NO.
	DRAWN - KAR	REVISED - CITY REVIEW 6-29-15				1630	10-00059-00-LT	KANKAKEE	20	12
	CHECKED - TMS	REVISED -				CONTRACT NO. 87633				
	DATE - 6/2/15	FILE - 100743SHT-PP4.dgn				FED. ROAD DIST. NO.	ILLINOIS FED. AID PROJECT TE-00031095			

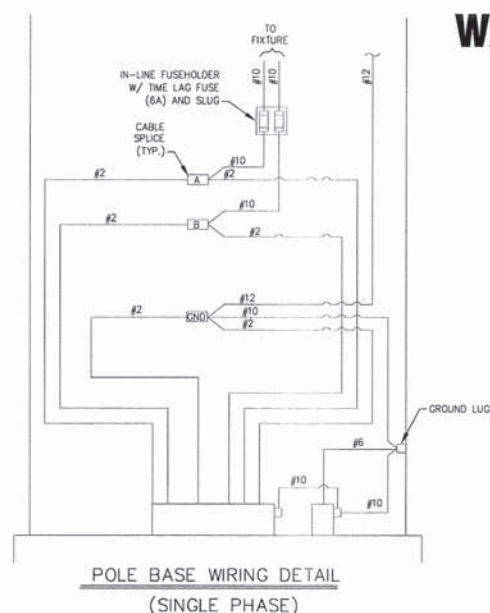
SCALE: H: 1"=10' V: 1"=5' STA. 217+21 TO STA. 219+82

COPYRIGHT © 2015 BY BAXTER & WOODMAN, INC.
 STATE OF ILLINOIS - PROFESSIONAL DESIGN FIRM
 LICENSE NO. - BK-00121 - EXPIRES 4/30/2017
 7/2/2015 3:06:36 PM



NOTES

- 1) N/A
- 2) REMOVE EXISTING DIRECT BURIED LIGHTING CABLES AND REPLACE WITH PROPOSED UNIT DUCT.
- 3) COORDINATE WORK TO ENSURE LIGHTING SYSTEM REMAINS OPERATIONAL.
- 4) CARE IS TO BE TAKEN AS NOT TO DAMAGE ANY OF THE EXISTING CONDUITS, DETECTORS AND EQUIPMENT. IF ANY OF THE CONDUIT AND/OR EQUIPMENT IS DAMAGED THE CONTRACTOR SHALL REPAIR AND/OR REPLACE THE CONDUIT AND/OR EQUIPMENT AT NO COST TO THE VILLAGE.
- 5) THE CONTRACTOR SHALL MAKE SPECIAL NOTE OF THE REQUIREMENTS FOR WIRE MARKERS AND SHALL TAG ALL WIRE ACCORDINGLY.
- 6) EQUIPMENT GROUND CONDUCTORS SHALL BE SPLICED AND/OR BONDED AT EACH LIGHT POLE OR OTHER PIECE OF EQUIPMENT.
- 7) CONDUIT AND UNIT DUCT MUST BE POSITIONED IN THE FIELD TO AVOID CONFLICT WITH TREES, BUSHES, DRAINS AND OTHER UTILITIES AND LANDSCAPING.
- 8) THE CONTRACTOR SHALL MAKE SPECIAL NOTE OF THE REQUIREMENTS FOR BURIED WARNING TAPE, SPECIFIED AS PART OF "UNDERGROUND RACEWAYS". THE INSTALLATION OF THE TAPE SHALL BE INSPECTED AND APPROVED BY THE ENGINEER PRIOR TO BACKFILLING.
- 9) ALL CONDUITS UNDER ROADWAYS AND DRIVEWAYS IN TRENCHES SHALL BE INSTALLED BEFORE PAVEMENT IS PLACED. CONDUIT LENGTHS ARE APPROXIMATE. THE CONTRACTOR SHALL VERIFY THE ACTUAL LENGTH REQUIREMENTS IN THE FIELD.
- 10) ALL ELECTRICAL DEVICES AND MATERIALS SHALL BE U/L LISTED WHERE APPLICABLE.
- 11) ABANDON EXISTING DIRECT BURIED LIGHTING CABLES FROM LIGHTING UNIT ON HWY 1 (RANGE STREET).
- 12) INSTALL PROPOSED CONDUIT / UNIT DUCT AS CLOSE TO BACK OF CURB AS PRACTICABLE.



LEGEND

	EXISTING COM ED POWER POLE
	SERVICE PESTAL
-UD-	1 1/4" UNIT DUCT 2*2 & #2 GROUND OR AS INDICATED
-UC-	3" CONDUIT, GALVANIZED STEEL, 20' LONG WITH 1 1/4" UNIT DUCT OR AS INDICATED
-EA-	EXISTING AERIAL CABLES, LIGHTING
-E-	EXISTING CABLES, LIGHTING
	EXISTING LIGHTING UNIT

COPYRIGHT © 2015 BY BAXTER & WOODMAN, INC.
 STATE OF ILLINOIS - PROFESSIONAL DESIGN FIRM
 LICENSE NO. - JBA-00121 - EXPIRES 4/30/2017
 7/8/2015 3:06:07 PM 306607 PM
 I:\Mokero\WOMEN\100743\11tr\Bee\scope\ACADD-SURVEY\DRAWINGS\100743SHT-Electrical.dgn

BAXTER & WOODMAN Consulting Engineers	DESIGNED - MWP	REVISED - IDOT REVIEW 6-29-15
	DRAWN - KAR	REVISED - CITY REVIEW 6-29-15
	CHECKED - TMS	REVISED -
	DATE - 6/2/15	FILE - 100743SHT-Electrical.dgn

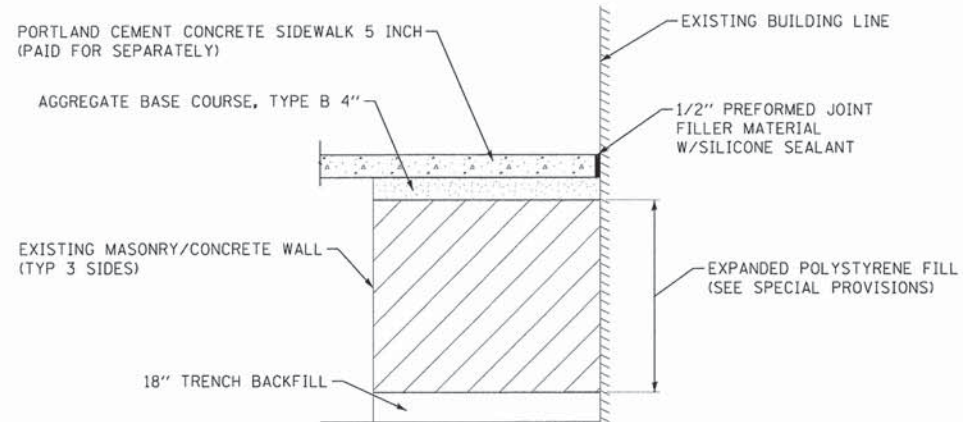
**STATE OF ILLINOIS
DEPARTMENT OF TRANSPORTATION**

ELECTRICAL PLAN - WASHINGTON STREET

SCALE: 1" = 20'

STA. 15+00 TO STA. 19+50

MUN. RTE. 1630	SECTION 10-00059-00-LT	COUNTY KANKAKEE	TOTAL SHEETS 20	SHEET NO. 13
FED. ROAD DIST. NO.		ILLINOIS FED. AID PROJECT TE-000310951		
CONTRACT NO. 87633				



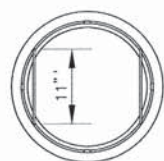
FILLING EXISTING VAULT

NO SCALE

NOTES:

1. SEE PLAN SHEETS 9 -12 FOR PLAN DIMENSIONS.
2. TYPICAL FOR 2 LOCATIONS

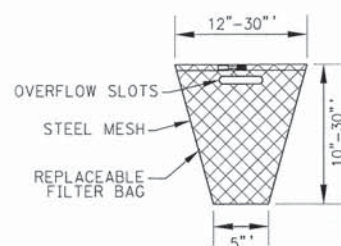
108 WASHINGTON STREET
109, 109 1/2, 111 AND 113 WASHINGTON STREET



PLAN



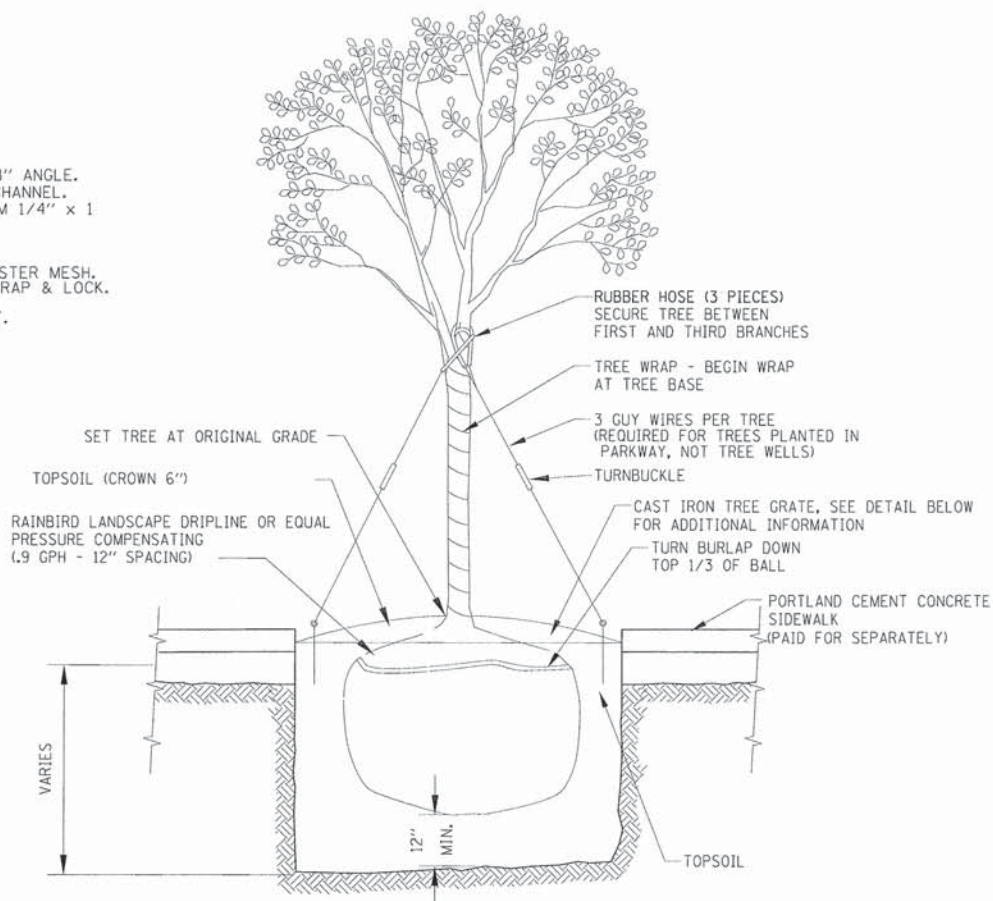
SECTION



- GENERAL NOTES:**
- FRAME:** TOP RING CONSTRUCTED FROM 1 1/4" x 1 1/4" x 1/8" ANGLE. BASE RING CONSTRUCTED OF 1 1/2" x 1/2" x 1/8" CHANNEL. HANDLES & SUSPENSION BRACKETS CONSTRUCTED FROM 1/4" x 1 1/4" FLAT. ALL STEEL CONFORMING TO ASTM-A36.
- REPLACEABLE BAG:** CONSTRUCTED FROM 4 OZ./SQ. YD. NON-WOVEN POLYPROPYLENE GEOTEXTILE REINFORCED WITH POLYESTER MESH. CONNECTED TO BASE RING WITH STAINLESS STEEL STRAP & LOCK.
- STEEL MESH:** REMOVABLE STAINLESS STEEL MESH STRAINER BASKET. 1/4" DIA. HOLE SIZE, 58% OPEN AREA.

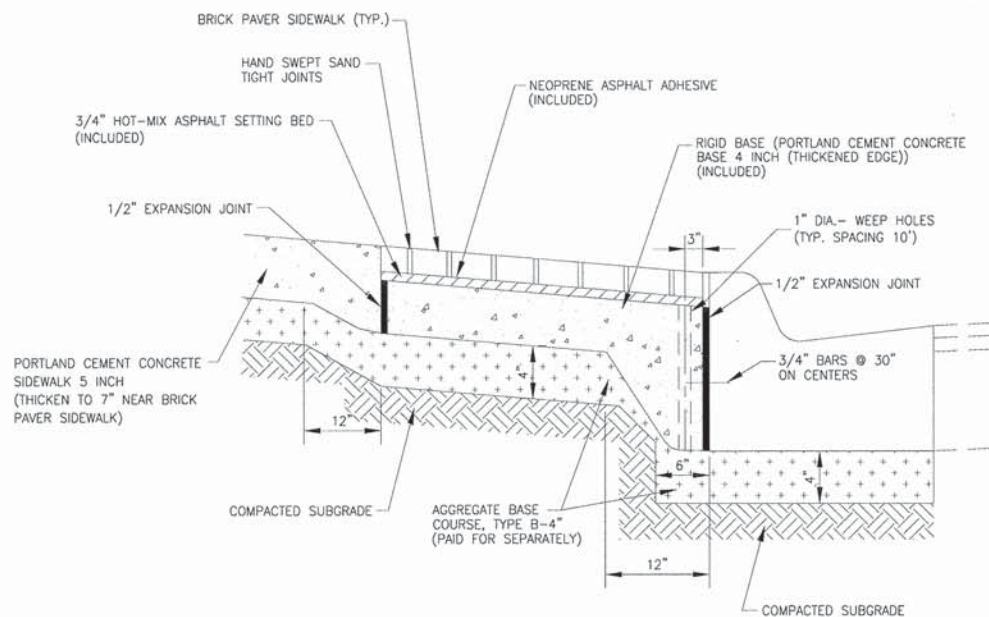
INLET PROTECTION FILTER

NO SCALE



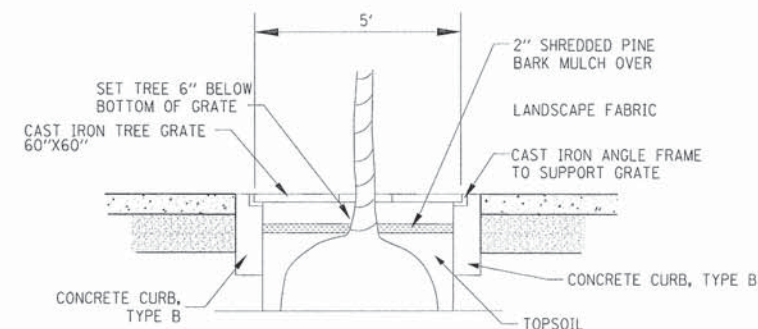
TREE WELL PLANTING /TREE DRIPLINE

NO SCALE



BRICK PAVER SIDEWALK ON RIGID BASE DETAIL

NO SCALE



CAST IRON TREE GRATE AND PLANTING DETAIL

COPYRIGHT © 2015 BY BAXTER & WOODMAN, INC.
 STATE OF ILLINOIS - PROFESSIONAL DESIGN FIRM
 LICENSE NO. - 384-00121 - EXPIRES 4/30/2017
 1/28/2015 3:06:05 PM
 ...\\plots\1007435HT-Details.dgn
 ...\\plots\1007435HT-Details.dgn
 ...\\plots\1007435HT-Details.dgn
 ...\\plots\1007435HT-Details.dgn

BAXTER & WOODMAN
Consulting Engineers

DESIGNED - MWP	REVISED - IDOT REVIEW 6-29-15
DRAWN - KAR	REVISED - CITY REVIEW 6-29-15
CHECKED - TMS	REVISED -
DATE - 6/2/15	FILE - 1007435HT-Details.dgn

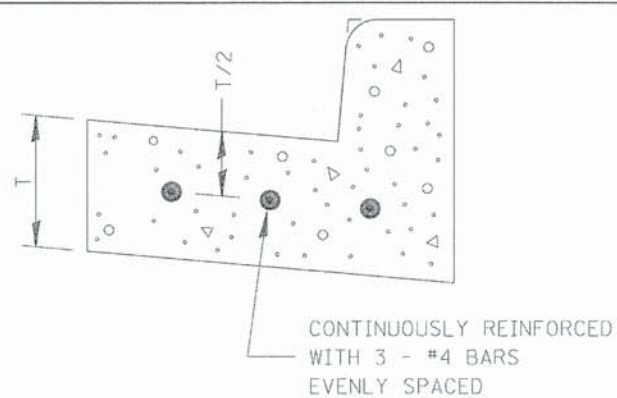
STATE OF ILLINOIS
DEPARTMENT OF TRANSPORTATION

MISCELLANEOUS DETAILS

SCALE: NONE

STA. TO STA.

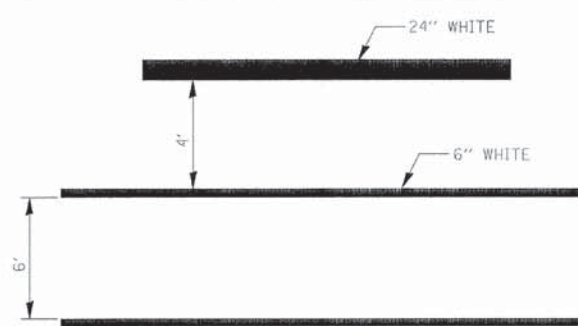
MUN. RITE.	SECTION	COUNTY	TOTAL SHEETS	SHEET NO.
1630	10-00059-00-LT	KANKAKEE	20	14
FED. ROAD DIST. NO. ILLINOIS FED. AID PROJECT TE-000310951			CONTRACT NO. 87633	



REINFORCEMENT SHALL NOT BE PAID FOR SEPARATELY BUT WILL BE INCLUDED IN THE CONTRACT UNIT PRICE FOR CC&G.

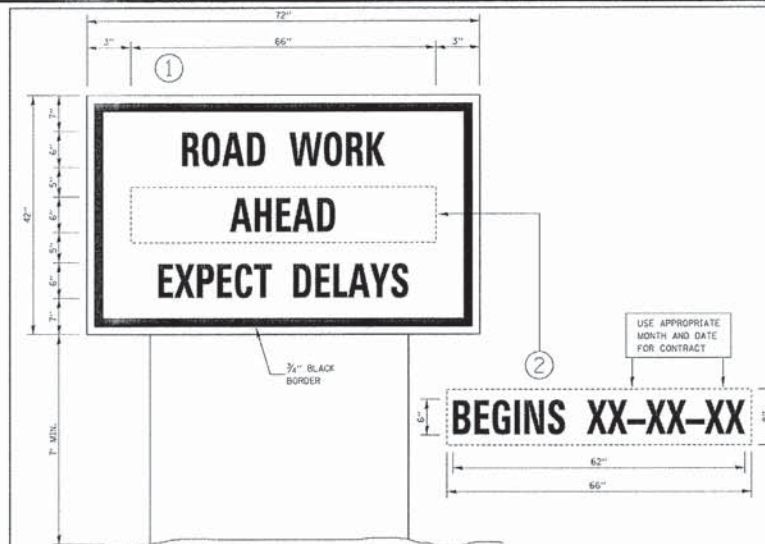
**REINFORCEMENT DETAIL
FOR
COMBINATION CONCRETE
CURB AND GUTTER
TYPE B-6.24**

606-7



**TYPICAL SPACING DETAIL FOR
CROSSWALKS AND STOP BARS**

**780-3
OPTION 1**



TEMPORARY INFORMATION SIGNING

NOTES:

1. USE 6" D BLACK LETTERING ON FLOURESENT ORANGE BACKGROUND.
2. ERECT SIGNS AT LOCATIONS IN ADVANCE OF THE "ROAD CONSTRUCTION AHEAD" SIGNS AS DIRECTED BY THE ENGINEER.
3. ERECT SIGN ① WITH INSTALLED PANEL ② A MINIMUM OF ONE WEEK PRIOR TO THE START OF THE LANE CLOSURE.
4. REMOVE PANEL ② ON THAT DATE.
5. SEE SPECIAL PROVISION "TEMPORARY INFORMATION SIGNING" FOR ADDITIONAL INFORMATION.
6. WILL BE PAID FOR PER SQ FT AS "TEMPORARY INFORMATION SIGNING". EACH SIGN = 21 SQ FT AND THE DATE PANEL ② WILL NOT BE MEASURED SEPARATELY FOR PAYMENT.

720-8

CONCRETE CURB AND GUTTER SHALL BE CONSTRUCTED IN ACCORDANCE WITH SECTION 606 OF THE STANDARD SPECIFICATIONS, SUPPLEMENTAL SPECIFICATIONS, STANDARD 606001 AND THIS DRAWING.

CLASS SI CONCRETE SHALL BE USED THROUGHOUT. A HOLE 1 1/2" IN DIA. AND 9" DEEP SHALL BE DRILLED IN THE EXISTING CONCRETE CURB AS SHOWN. A 1 1/4"x18" SMOOTH DOWEL BAR SHALL BE GROUTED IN THE HOLE LONGITUDINALLY.

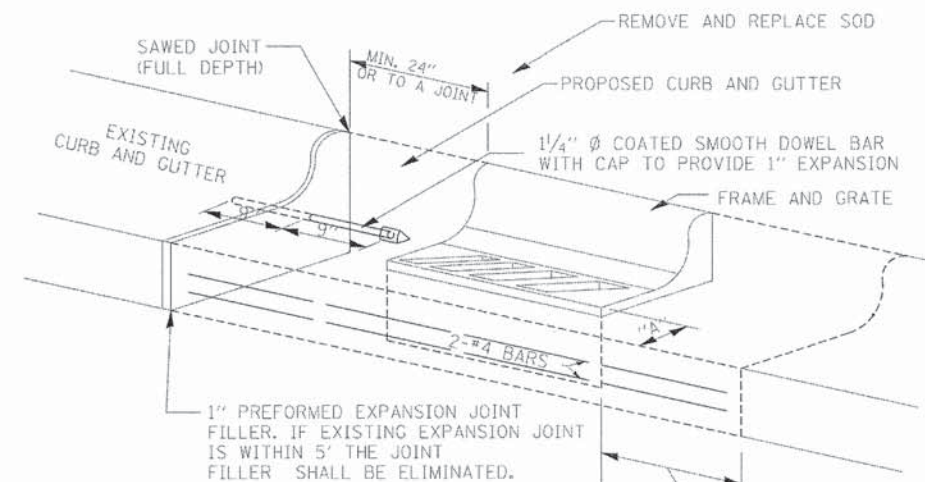
JOINTS OF A TYPE SIMILAR TO THAT IN THE UNDERLYING PAVEMENT (EXPANSION OR CONTRACTION) SHALL BE INSTALLED IN THE CONCRETE CURB IN ALIGNMENT WITH THE JOINTS IN THE PAVEMENT.

THE PROPOSED CONFIGURATION OF THE CURB AND GUTTER SHALL MATCH THE REMOVED.

THE LOCATION OF THE DOWEL BAR SHALL BE DETERMINED BY THE ENGINEER.

ALL EXISTING TIE BARS IN EDGE OF PAVEMENT SLAB THRU REPLACEMENT AREA SHALL BE CUT OFF.

THE WORK SHALL BE DONE IN ACCORDANCE WITH SECTION 602 OF THE STANDARD SPECIFICATIONS AND INCLUDES THE REMOVAL AND REPLACEMENT OF SOD, CONCRETE PAVEMENT AND/OR CURB AND GUTTER ADJACENT TO CATCH BASINS OR INLETS TO BE ADJUSTED OR RECONSTRUCTED AND SHALL BE INCLUDED IN THE PAY ITEM OF CATCH BASINS OR INLETS TO BE ADJUSTED OR RECONSTRUCTED AS SPECIFIED.



WHEN "A" IS GREATER THAN 2", 2-#4 BARS SHALL BE PLACED AS SHOWN.

SAME REPAIR AS INDICATED ON OTHER SIDE OF FRAME AND GRATE.

**DETAILS FOR CURB & GUTTER REPLACEMENT
CATCH BASIN OR INLETS TO BE
ADJUSTED OR RECONSTRUCTED**

606-10

COPYRIGHT © 2015 BY BAXTER & WOODMAN, INC.
 STATE OF ILLINOIS - PROFESSIONAL DESIGN FIRM
 LICENSE NO. 184-00121 - EXPIRES 4/30/2017
 486/cjc 7/8/2015 3:06:09 PM
 ...:\pilot\100743_Details.dgn
 ...:\pilot\100743_Phase2_Plan.tbl
 ...:\Mokena\MOMEN\100743\1\street\scope\CADD-SURVEY\DRAWINGS\100743SHT-Details.dgn

BAXTER & WOODMAN
Consulting Engineers

DESIGNED - MWP	REVISED - IDOT REVIEW 6-29-15
DRAWN - KAR	REVISED - CITY REVIEW 6-29-15
CHECKED - TMS	REVISED -
DATE - 6/2/15	FILE - 100743SHT-Details.dgn

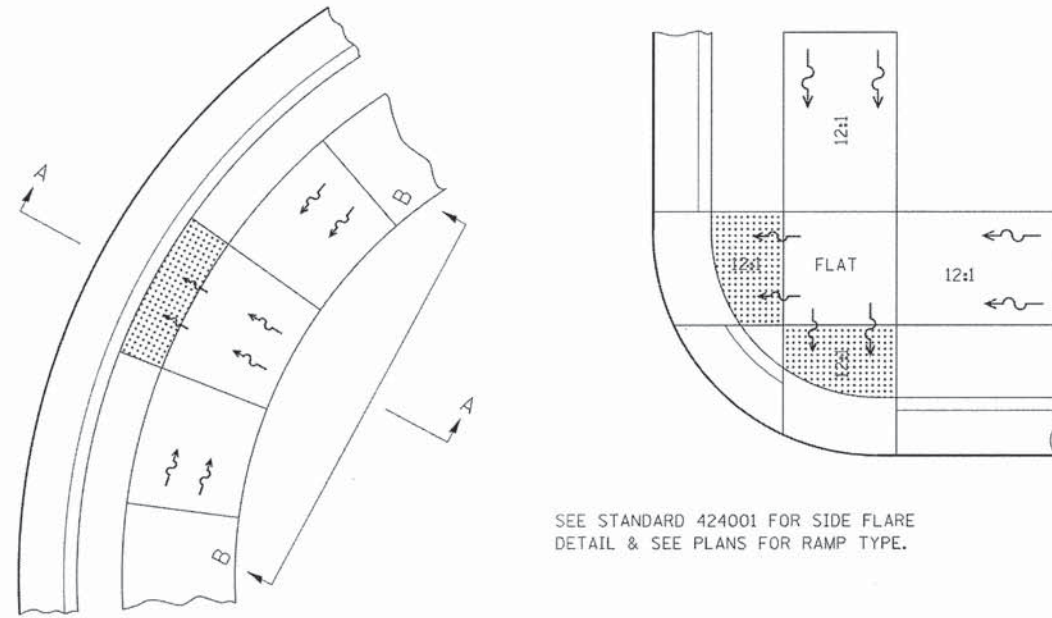
**STATE OF ILLINOIS
DEPARTMENT OF TRANSPORTATION**

IDOT DISTRICT 3 DETAILS

SCALE: NONE

STA. TO STA.

MUN. RTE.	SECTION	COUNTY	TOTAL SHEETS	SHEET NO.
1630	10-00059-00-LT	KANKAKEE	20	15
FED. ROAD DIST. NO. ILLINOIS FED. AID PROJECT TE-00031095			CONTRACT NO. 87633	



SEE STANDARD 424001 FOR SIDE FLARE
DETAIL & SEE PLANS FOR RAMP TYPE.

NOTES:

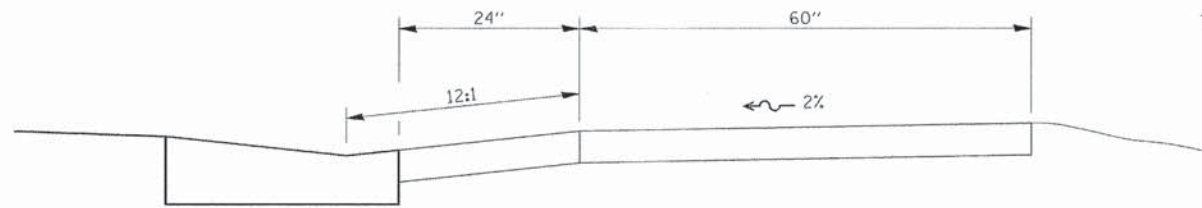
THIS DETAIL TO BE USED IN CONJUNCTION WITH STATE STANDARD 424001.

THE MAXIMUM ALLOWABLE CROSS SLOPE FOR SIDEWALK IS 2%.

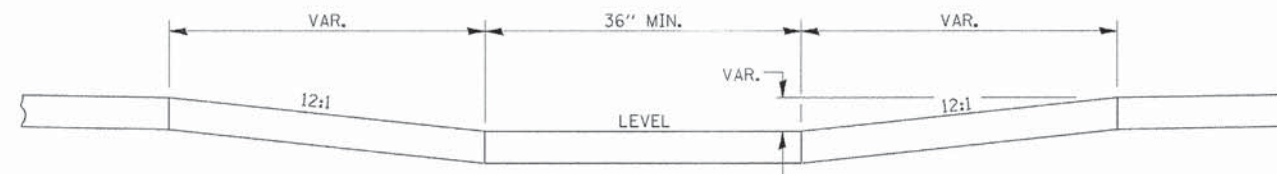
THE MAXIMUM ALLOWABLE SIDEWALK GRADE IS 8%.

IF SPACE LIMITATIONS PROHIBIT THE USE OF THE 12:1 SLOPE, THEN SLOPES BETWEEN 10:1 AND 12:1 ARE PERMITTED FOR A MAXIMUM RISE OF 6". SLOPES 8:1 AND 10:1 ARE ALLOWED FOR A MAXIMUM RISE OF 3". SLOPES STEEPER THAN 8:1 ARE NOT PERMITTED.

THE DEPRESSED CURB IS NOT STANDARD. THE RISE IS 1/2" INSTEAD OF 1 1/2".



SECTION A-A



SECTION B-B

ADA SIDEWALK ACCESSIBILITY RAMP DETAIL

424-29

COPYRIGHT © 2015 BY BAXTER & WOODMAN, INC.
 STATE OF ILLINOIS - PROFESSIONAL DESIGN FIRM
 LICENSE NO. - JBA-00121 - EXPIRES 4/30/2017
 7/8/2015 3:06:17 PM
 I:\Mokken\WOODMAN\00743SHT-Details.dgn

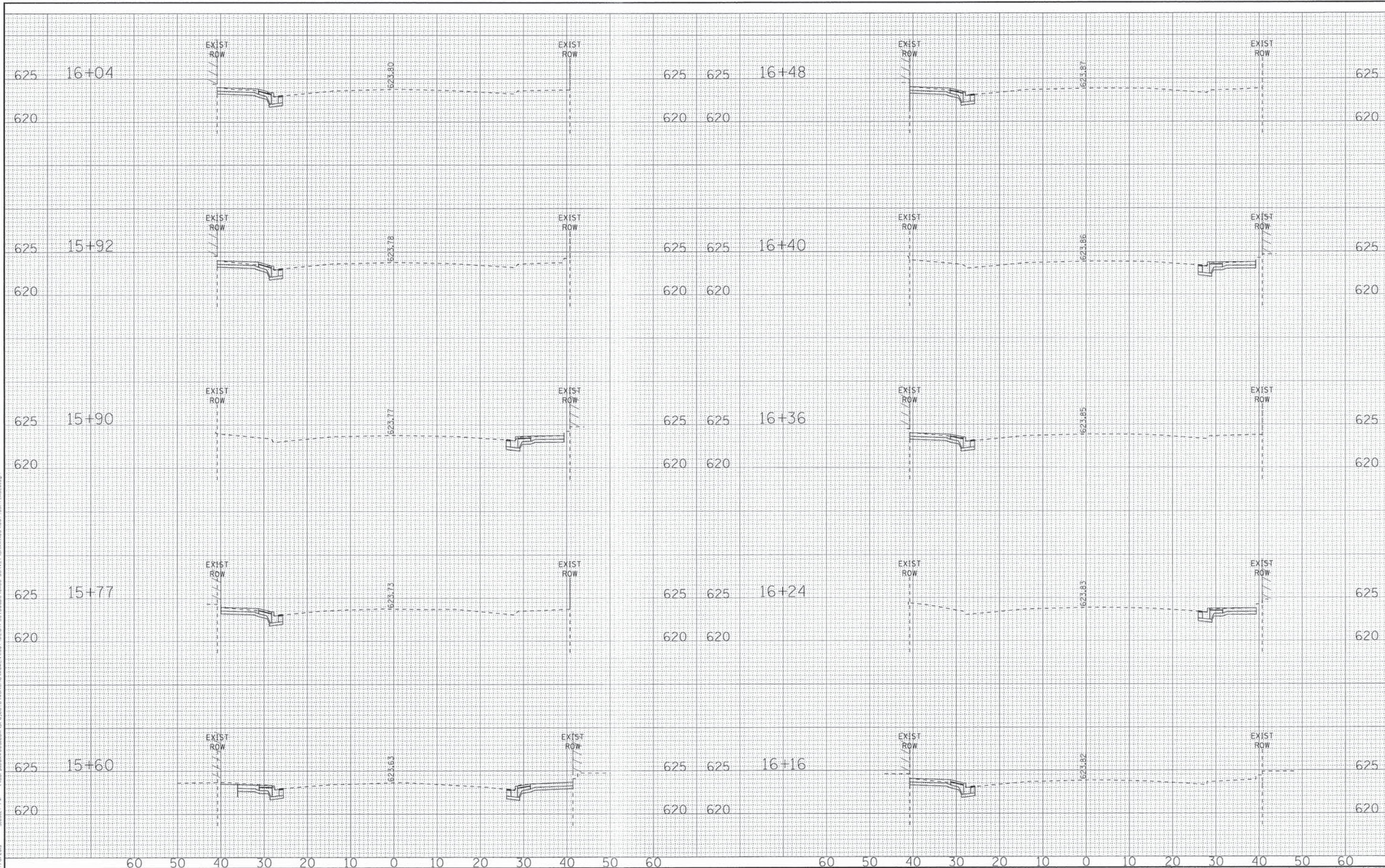
BAXTER & WOODMAN Consulting Engineers	DESIGNED - MWP	REVISED - IDOT REVIEW 6-29-15
	DRAWN - KAR	REVISED - CITY REVIEW 6-29-15
	CHECKED - TMS	REVISED -
	DATE - 6/2/15	FILE - 100743SHT-De+alls.dgn

STATE OF ILLINOIS
DEPARTMENT OF TRANSPORTATION

IDOT DISTRICT 3 DETAILS	
SCALE: NONE	STA. TO STA.

MUN. RTE.	SECTION	COUNTY	TOTAL SHEETS	SHEET NO.
1630	10-00059-00-LT	KANKAKEE	20	16
FED. ROAD DIST. NO. ILLINOIS FED. AID PROJECT TE-000310951			CONTRACT NO. 87633	

DESIGNED BY: BAXTER & WOODMAN, INC.
 DRAWN BY: MAC
 CHECKED BY: TMS
 DATE: 6/2/15
 PROJECT: 10-00059-00-LT
 COUNTY: KANKAKEE
 SHEET NO.: 20 OF 17
 CONTRACT NO.: 87633



DESIGNED - MWP	REVISED -
DRAWN - MAC	REVISED -
CHECKED - TMS	REVISED -
DATE - 6/2/15	REVISED -

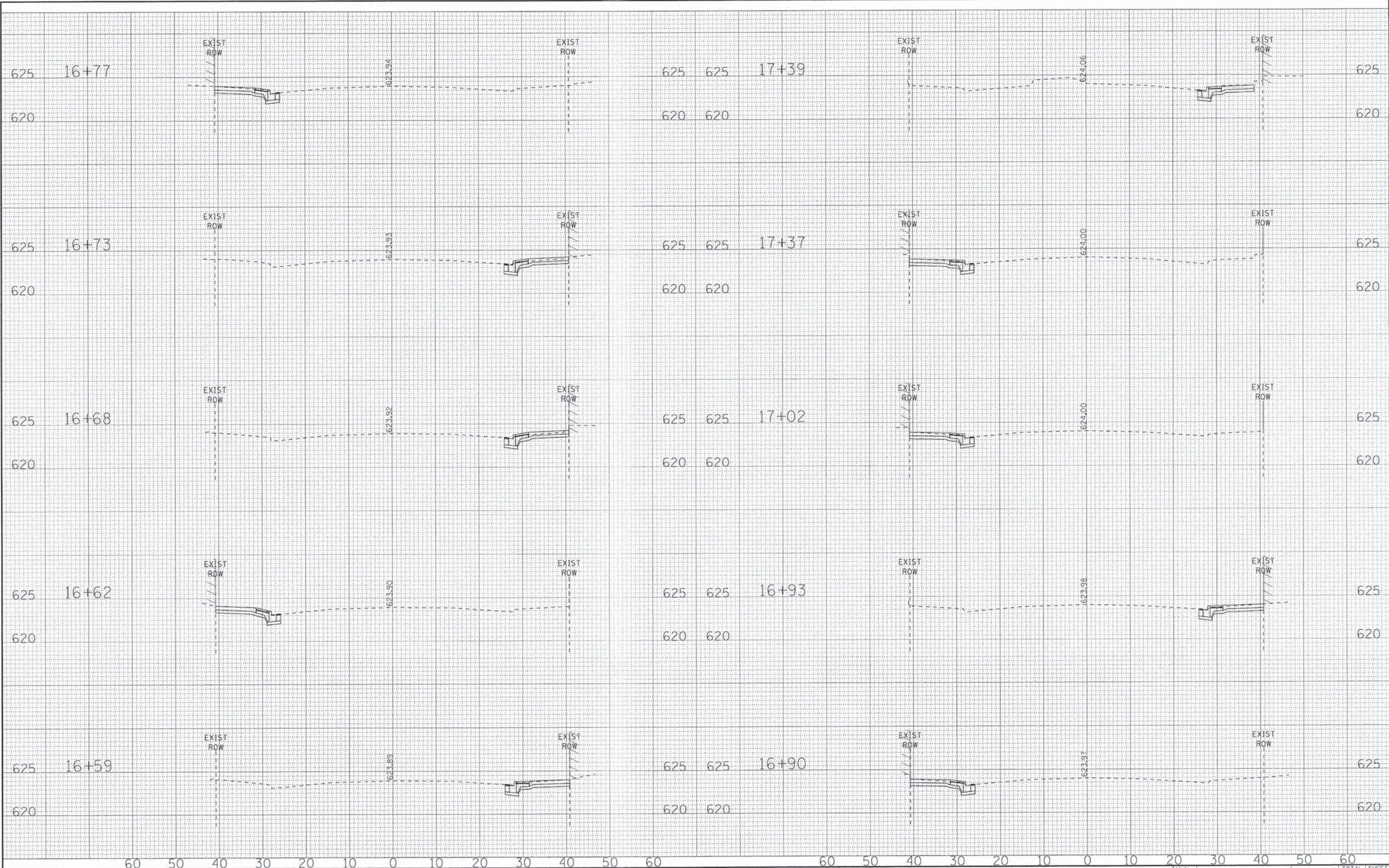
STATE OF ILLINOIS
DEPARTMENT OF TRANSPORTATION

CROSS SECTIONS - WASHINGTON STREET

MUN. RTE.	SECTION	COUNTY	TOTAL SHEETS	SHEET NO.
1630	10-00059-00-LT	KANKAKEE	20	17
FED. ROAD DIST. NO.			ILLINOIS FED. AID PROJECT TE-00030951	

SCALE: H: 1"=10' V: 1"=5' STA. 15+60 TO STA. 16+48

COPYRIGHT © 2016 BY BAXTER & WOODMAN, INC.
 STATE OF ILLINOIS - PROFESSIONAL DESIGN FIRM
 LICENSE NO. 18-00021 - EXPIRES 12/31/2017
 1876/2016



DESIGNED - MWP	REVISED -
DRAWN - MAC	REVISED -
CHECKED - TMS	REVISED -
DATE - 6/2/15	REVISED -

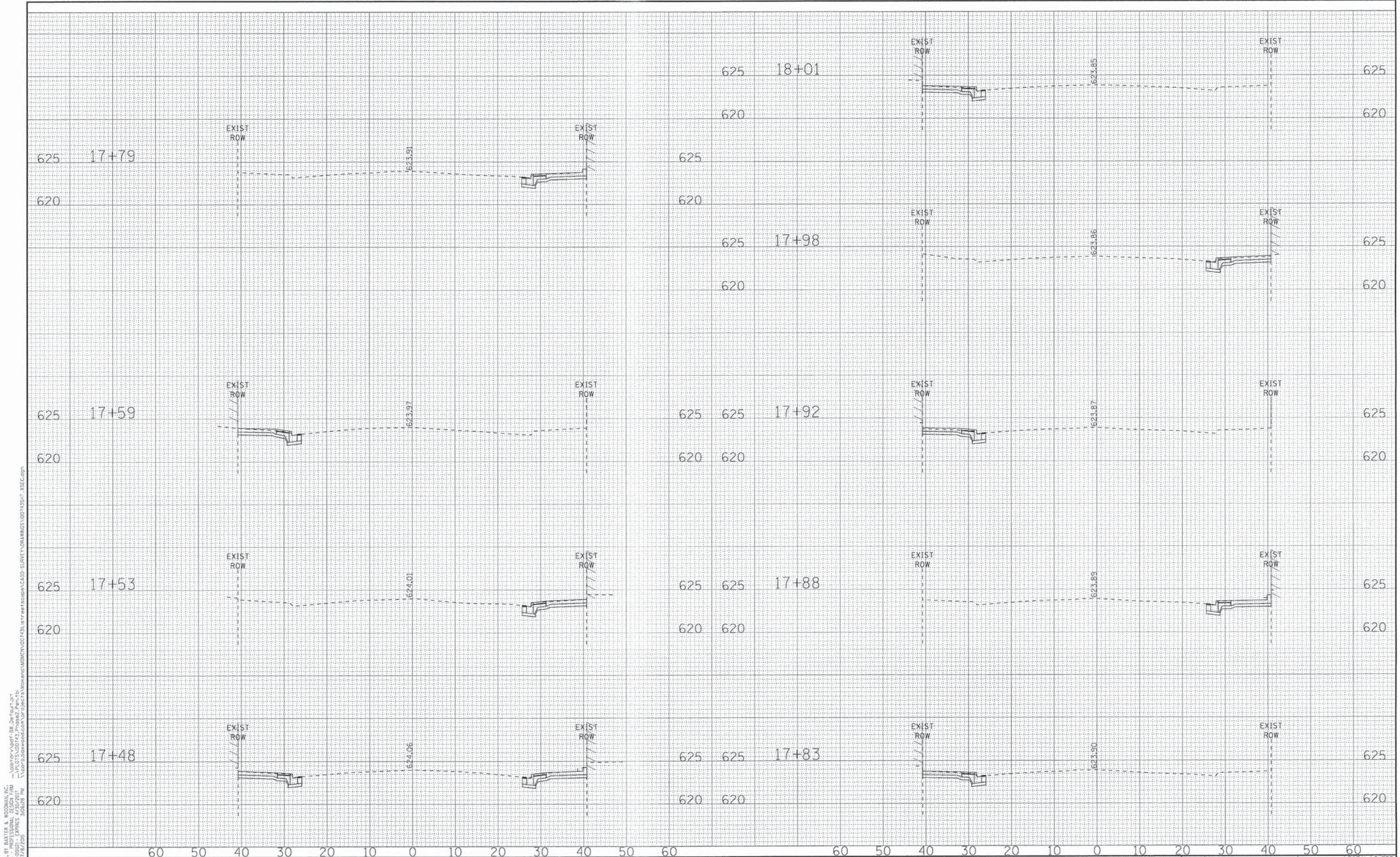
STATE OF ILLINOIS
DEPARTMENT OF TRANSPORTATION

CROSS SECTIONS - WASHINGTON STREET

SCALE: H: 1"=10' V: 1"=5'

STA. 16+59 TO STA. 17+39

MUN. RTE.	SECTION	COUNTY	TOTAL SHEETS	SHEET NO.
1630	10-00059-00-LT	KANKAKEE	20	18
CONTRACT NO. 87633			FED. ROAD DIST. NO. [ILLINOIS] FED. AID PROJECT TE-000310951	



6/22/15 11:58 AM \\p01015\000\13\Projects\Workshop\1630\17+48\17+48.dwg
 7/8/2015 5:05:28 PM \\p01015\000\13\Projects\Workshop\1630\17+48\17+48.dwg
 6/22/15 11:58 AM \\p01015\000\13\Projects\Workshop\1630\17+48\17+48.dwg
 6/22/15 11:58 AM \\p01015\000\13\Projects\Workshop\1630\17+48\17+48.dwg
 6/22/15 11:58 AM \\p01015\000\13\Projects\Workshop\1630\17+48\17+48.dwg
 6/22/15 11:58 AM \\p01015\000\13\Projects\Workshop\1630\17+48\17+48.dwg
 6/22/15 11:58 AM \\p01015\000\13\Projects\Workshop\1630\17+48\17+48.dwg
 6/22/15 11:58 AM \\p01015\000\13\Projects\Workshop\1630\17+48\17+48.dwg
 6/22/15 11:58 AM \\p01015\000\13\Projects\Workshop\1630\17+48\17+48.dwg
 6/22/15 11:58 AM \\p01015\000\13\Projects\Workshop\1630\17+48\17+48.dwg

BAXTER & WOODMAN Consulting Engineers	DESIGNED - MWP	REVISED -
	DRAWN - MAC	REVISED -
	CHECKED - TMS	REVISED -
	DATE - 6/2/15	REVISED -

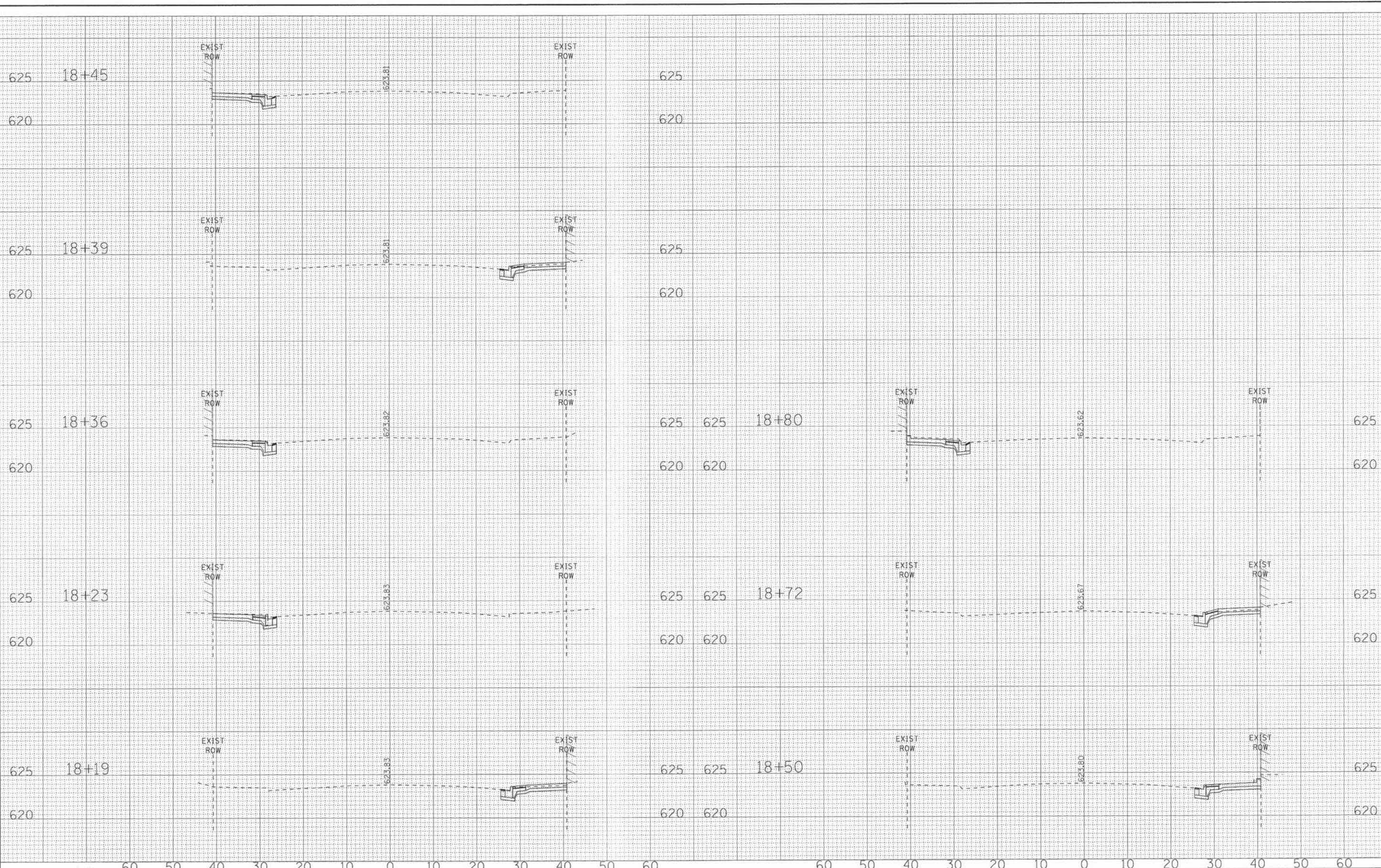
STATE OF ILLINOIS
DEPARTMENT OF TRANSPORTATION

CROSS SECTIONS - WASHINGTON STREET

SCALE: H: 1"=10' V: 1"=5'
 STA. 17+48 TO STA. 18+01

MUN. RTE.	SECTION	COUNTY	TOTAL SHEETS	SHEET NO.
1630	10-00059-00-LT	KANKAKEE	20	19
FED. ROAD DIST. NO. [ILLINOIS] FED. AID PROJECT TE-00030951			CONTRACT NO. 87633	

COPYRIGHT © 2015 BY BAXTER & WOODMAN, INC.
 STATE OF ILLINOIS PROFESSIONAL ENGINEERING
 LICENSE NO. 187 7/8/2015
 PROJECT NO. 10-00059-00-LT
 DRAWING NO. 10-00059-00-LT-AS-SEC-C



DESIGNED - MWP	REVISED -
DRAWN - MAC	REVISED -
CHECKED - TMS	REVISED -
DATE - 6/2/15	REVISED -

STATE OF ILLINOIS
DEPARTMENT OF TRANSPORTATION

CROSS SECTIONS - WASHINGTON STREET

SCALE: H: 1"=10' V: 1"=5'

STA. 18+19 TO STA. 18+80

MUN. RTE.	SECTION	COUNTY	TOTAL SHEETS	SHEET NO.
1630	10-00059-00-LT	KANKAKEE	20	20
FED. ROAD DIST. NO.			ILLINOIS FED. AID PROJECT TE-00030953	