

STATE OF ILLINOIS  
DEPARTMENT OF TRANSPORTATION

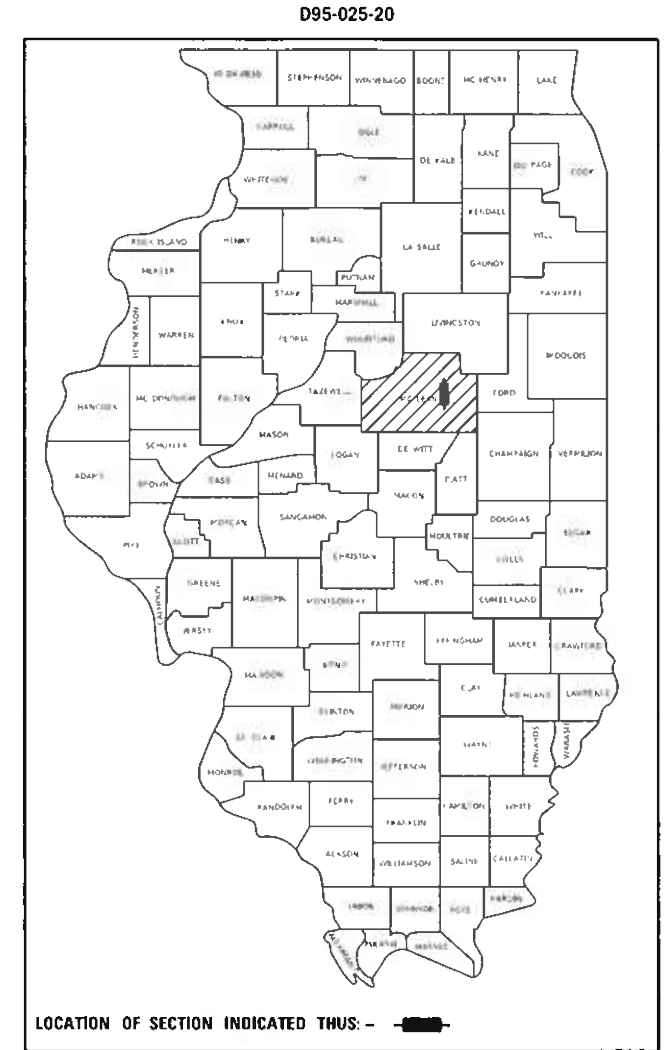
F.A.I. RTE	SECTION	COUNTY	TOTAL SHEETS	SHEET NO.
55	MBPM 2021-1	MCLEAN	17	1
		ILLINOIS	CONTRACT NO. 70E94	

FOR INDEX OF SHEETS, SEE SHEET NO. 2  
FOR HIGHWAY STANDARDS LIST, SEE SHEET NO. 2  
FOR SUMMARY OF QUANTITIES, SEE SHEET NO. 3-4

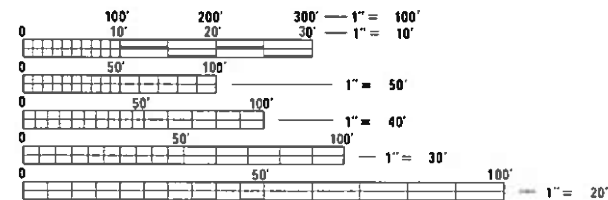
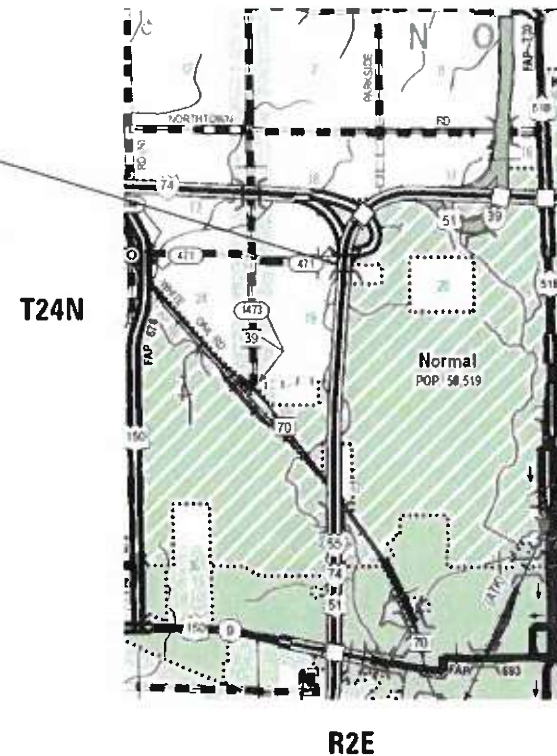
# PROPOSED HIGHWAY PLANS

F.A.I. ROUTE 55  
SECTION MBPM 2021-1  
PROJECT NHPP-KQW2(159)  
BRIDGE JOINT REPLACE/REPAIR  
MCLEAN COUNTY

C-95-087-20



S.N. 057-0223  
STA. 303 + 56.75 (FAI-55)  
STA. 100 + 00.00 (FAS 471)  
BRIDGE JOINT REPLACE/REPAIR



FULL SIZE PLANS HAVE BEEN PREPARED USING STANDARD ENGINEERING SCALES. REDUCED SIZED PLANS WILL NOT CONFORM TO STANDARD SCALES. IN MAKING MEASUREMENTS ON REDUCED PLANS, THE ABOVE SCALES MAY BE USED.

J.U.L.I.E.  
JOINT UTILITY LOCATION INFORMATION FOR EXCAVATORS  
1-800-892-0123  
OR 811

PROJECT ENGINEER: TIM BRANDENBURG  
PROJECT MANAGER: JEFF M. SHERER

CONTRACT NO. 70E94

GROSS LENGTH = 317.38 FT. = 0.060 MILE  
NET LENGTH = 317.38 FT. = 0.060 MILE

STATE OF ILLINOIS  
DEPARTMENT OF TRANSPORTATION

SUBMITTED June 24 2020  
Barbara A. James  
REGIONAL ENGINEER

August 14, 2020  
Scott A. Elk  
ENGINEER OF DESIGN AND ENVIRONMENT

August 14, 2020  
Garrett J. ...  
DIRECTOR OF HIGHWAYS PROJECT IMPLEMENTATION 13

PRINTED BY THE AUTHORITY  
OF THE STATE OF ILLINOIS

# INDEX OF SHEETS

SHEET NO.	ITEM
1	COVER SHEET
2	INDEX OF SHEETS/ HIGHWAY STANDARDS/ GENERAL NOTES
3-4	SUMMARY OF QUANTITIES
5	EXISTING TYPICAL CROSS-SECTION
6	STAGED CONSTRUCTION DETAIL
7-8	TEMPORARY CONCRETE BARRIER LAYOUT
9	GENERAL PLAN/ ELEVATION SHEET
10	WEST ABUTMENT JOINT REPLACEMENT DETAIL
11	EAST ABUTMENT JOINT REPLACEMENT DETAILS
12	DETAIL OF STRIP SEAL JOINT
13	BAR SPLICER ASSEMBLY AND MECHANICAL SPLICER DETAILS
14	TEMPORARY CONCRETE BARRIER FOR STAGE CONSTRUCTION
15	DETAIL OF STRUCTURAL REPAIR OF CONCRETE <=5"
16-17	DETAIL OF WIDTH RESTRICTION SIGNING

# LIST OF STANDARDS

STANDARD NO.	DESCRIPTION
000001-07	STANDARD SYMBOLS, ABBREVIATIONS AND PATTERNS
001001-02	AREAS OF REINFORCEMENT BARS
001006	DECIMAL OF AN INCH AND OF A FOOT
701006-05	OFF RD OPERATIONS, 2L,2W, 15' TO 24" FROM EOP
701011-04	OFF RD MOVING OPERATIONS, 2L, 2W, DAY ONLY
701201-05	LANE CLOSURE, 2L 2W, DAY ONLY SPEEDS > 45 MPH
701301-04	LANE CLOSURE, 2L, 2W, SHORT TIME OPERATIONS
701321-18	LANE CLOSURE, 2L 2W, BRIDGE REPAIR WITH BARRIER
701901-08	TRAFFIC CONTROL DEVICES
704001-08	TEMPORARY CONCRETE BARRIER

# GENERAL NOTES

G.N.-100A

ELECTRONIC FILES AND/OR ELECTRONIC SURVEY INFORMATION INCLUDING CADD FILES WILL NOT BE AVAILABLE TO THE CONTRACTOR.

G.N.-105.09A

ALL ELEVATIONS SHOWN IN THE PLANS ARE BASED ON NORTH AMERICAN VERTICAL DATUM OF 1988. (NAVD 88)

G.N. 406H Mixture Requirements

Location	Shoulder	Shoulder
Mixture Use	Top 1 1/2" Surface	Bottom 6 1/2" Binder
AC/PG	PG 64-22	PG 64-22
Design Air Voids	4.0% @ Ndes=30	4.0% @ Ndes=50
Mix Comp(Gradation)	IL 9.5L	IL 19.0
Friction Aggregate	Mix C	N.A.
Mixture Weight	112	112
Quality Management Program	QC/QA	QC/QA
Sublot Size	N.A.	N.A.

G.N.-1004.01

COARSE AGGREGATE GRADATION CA-10 MAY BE USED WHENEVER COARSE AGGREGATE CA-6 IS SPECIFIED IN THE STANDARD SPECIFICATIONS.

THERE ARE NO COMMITMENTS ASSOCIATED WITH THIS PROJECT

**STATE OF ILLINOIS  
DEPARTMENT OF TRANSPORTATION**

**INDEX OF SHEETS  
GENERAL NOTES**

USER NAME = shererjm	DESIGNED - JMS	REVISED - _____
	DRAWN - JMS	REVISED - _____
PLOT SCALE = 40.0000 ' / in.	CHECKED - _____	REVISED - _____
PLOT DATE = 6/18/2020	DATE - 061520	REVISED - _____

SCALE: NONE SHEET 1 OF 1 SHEETS STA. \_\_\_\_\_ TO STA. \_\_\_\_\_

F.A.I. RTE.	SECTION	COUNTY	TOTAL SHEETS	SHEET NO.
55	MBPM 2021-1	MCLEAN	17	2
CONTRACT NO. 70E94				
ILLINOIS FED. AID PROJECT				

**MCLEAN COUNTY**  
**FAI-55**  
**INTERSTATE**  
**BRIDGE JOINT REPAIR**  
**S.N. 057-0223**  
**URBAN**  
**90% FED, 10% STATE**

CODE NO.	ITEM	UNIT	TOTAL QUANTITY	0047
20200100	EARTH EXCAVATION	CU YD	69.0	69.0
48203029	HOT-MIX ASPHALT SHOULDERS, 8"	SQ YD	311.0	311.0
50102400	CONCRETE REMOVAL	CU YD	9.4	9.4
50300255	CONCRETE SUPERSTRUCTURE	CU YD	9.4	9.4
50300300	PROTECTIVE COAT	SQ YD	30.0	30.0
50800205	REINFORCEMENT BARS, EPOXY COATED	POUND	1,112.0	1,112.0
50800515	BAR SPLICERS	EACH	20.0	20.0
52000110	PREFORMED JOINT STRIP SEAL	FOOT	84.0	84.0
67100100	MOBILIZATION	L SUM	1.0	1.0
70100405	TRAFFIC CONTROL AND PROTECTION, STANDARD 701321	EACH	1.0	1.0
70100450	TRAFFIC CONTROL AND PROTECTION, STANDARD 701201	L SUM	1.0	1.0
70106500	TEMPORARY BRIDGE TRAFFIC SIGNALS	EACH	1.0	1.0
70106700	TEMPORARY RUMBLE STRIPS	EACH	6.0	6.0
70107025	CHANGEABLE MESSAGE SIGN	CAL DA	28.0	28.0
70400100	TEMPORARY CONCRETE BARRIER	FOOT	720.0	720.0

MODEL: 4400.DWG  
 FILE NAME: p:\up\mcom.dat  
 ILLINOIS.gov\PIWDOT\Documents\DOT Offices\District 5\Projects\DS70E94\CADD\Drawings\70E94-SH-S00.dgn

USER NAME = shererjm	DESIGNED -	REVISED -
PLOT SCALE = 40.0000' / in.	DRAWN -	REVISED -
PLOT DATE = 6/17/2020	CHECKED -	REVISED -
	DATE -	REVISED -

**STATE OF ILLINOIS**  
**DEPARTMENT OF TRANSPORTATION**

**SUMMARY OF QUANTITIES**

SCALE: NONE    SHEET 1 OF 1 SHEETS    STA.    TO STA.

F.A.I. RTE.	SECTION	COUNTY	TOTAL SHEETS	SHEET NO.
55	MBPM 2021-1	MCLEAN	17	3
CONTRACT NO. 70E94				
ILLINOIS FED. AID PROJECT				

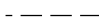




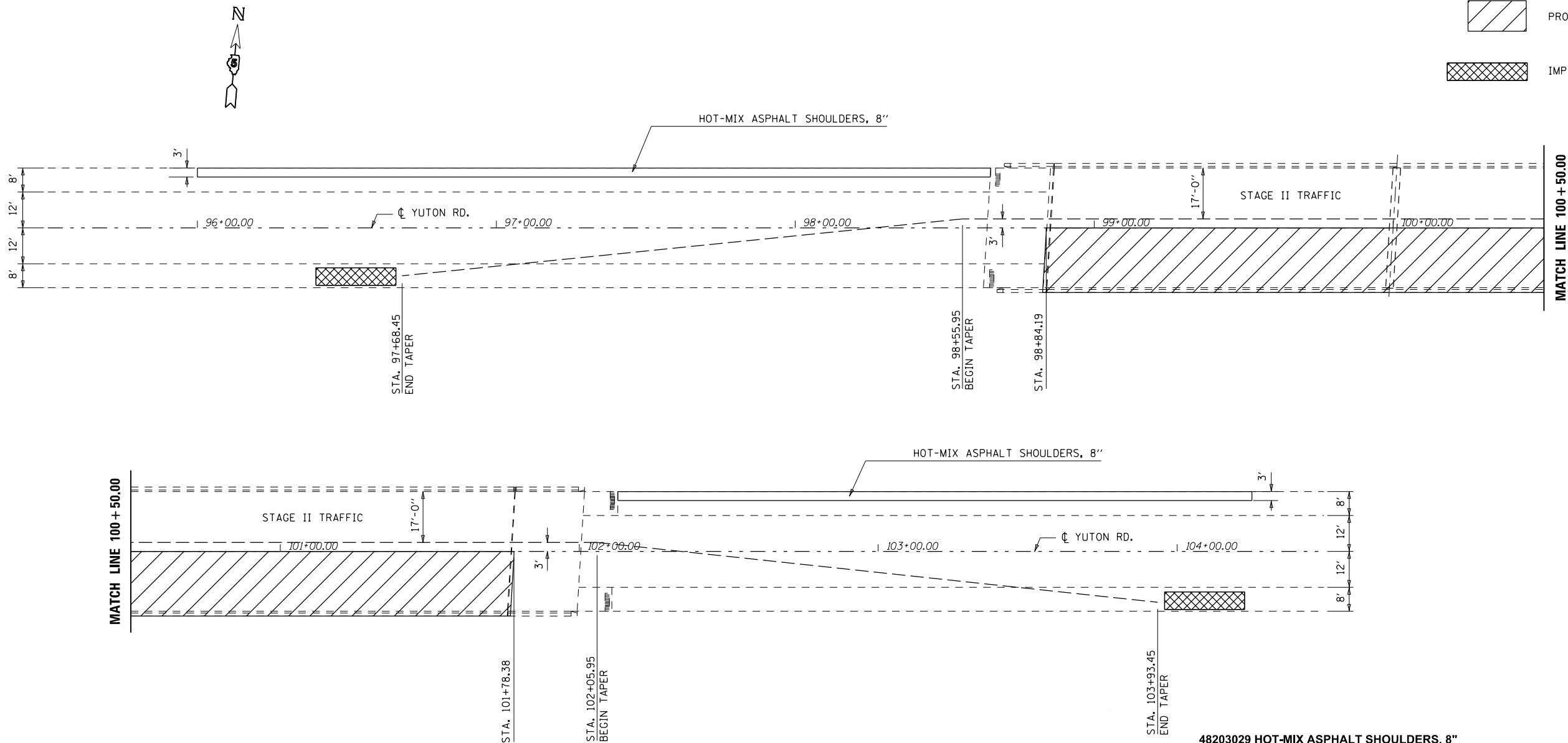






# STAGE II TEMPORARY CONCRETE BARRIER LAYOUT

-  TEMPORARY CONCRETE BARRIER
-  PROPOSED WORK AREA
-  IMPACT ATTENUATOR



48203029 HOT-MIX ASPHALT SHOULDERS, 8"

	STATION	TO	STATION	SQ YD	EARTH EXCAVATION
LT	96+00.00		LT 98+65.24	88.4	19.5
LT	102+12.89		LT 104+25.00	70.7	15.6
<b>SUB-TOTAL =</b>				<b>159.1</b>	<b>35.0</b>
<b>USE =</b>				<b>160.0</b>	<b>35.0</b>

### 70400200 RELOCATE TEMPORARY CONCRETE BARRIER

	STATION	TO	STATION	LENGTH
TAPER RT	97+68.45		RT 98+55.95	187.5
TAPER RT	98+84.19		RT 120+05.95	345.0
TAPER RT	102+05.95		RT 103+93.45	187.5
<b>SUB-TOTAL =</b>				<b>720.0</b>

### BILL OF MATERIALS

ITEM	UNIT	TOTAL
EARTH EXCAVATION	CU YD	35.0
HOT-MIX ASPHALT SHOULDERS, 8"	SQ YD	160.0
REL TEMPORARY CONCRETE BARRIER	FOOT	720.0
IMPACT ATTENUATOR RELOCATE (NON-REDIRECTIVE) TEST LEVEL 3	EACH	2.0

#### PLAN NOTES:

ALL STAGING DETAILS SHALL BE IN ACCORDANCE WITH TRAFFIC CONTROL AND PROTECTION STANDARD 701321 AND PAID FOR AT THE CONTRACT UNIT PRICE PER EACH LOCATION.

ALL WORK WITHOUT TEMPORARY CONCRETE BARRIER IN PLACE SHALL BE IN ACCORDANCE WITH TRAFFIC CONTROL AND PROTECTION STANDARDS 701201, 701301 AND 701311.

FOR ADDITIONAL DETAILS ASSOCIATED WITH TEMPORARY CONCRETE BARRIER, SEE HIGHWAY STANDARD 704001.

EXISTING OR TEMPORARY PAVEMENT MARKINGS SHALL BE ON BOTH SIDES OF THE OPEN LANE FROM STOP BAR TO STOP BAR. PAVEMENT MARKINGS THAT CONFLICT WITH STAGED TRAFFIC MARKINGS SHALL BE REMOVED. THIS WORK SHALL BE INCLUDED IN THE COST FOR TRAFFIC CONTROL AND PROTECTION STANDARD 701321.

REFLECTORS SHALL BE ATTACHED TO GUARDRAIL AND BARRIER WALL AT 25 FOOT CENTERS. COST INCLUDED WITH TRAFFIC CONTROL AND PROTECTION STANDARD 701321.

MODEL: \\MODELS\MAMES FILE: MAMES\_Plan\Highway\dot\Illinois\p\70400200\Documents\DOT\_Offices\Drawings\Projects\05702E94\CADD\Drawings\70E94-SN-StructurePlan.dgn

USER NAME = shererjm	DESIGNED - JMS	REVISED -
	DRAWN - JMS	REVISED -
PLOT SCALE = 40.0000' / in.	CHECKED -	REVISED -
PLOT DATE = 6/17/2020	DATE - 030320	REVISED -

**STATE OF ILLINOIS  
DEPARTMENT OF TRANSPORTATION**

**TEMPORARY CONCRETE BARRIER LAYOUT  
S.N. 057-0223**

SCALE: 1" = 20' SHEET 3 OF 3 SHEETS STA. TO STA.

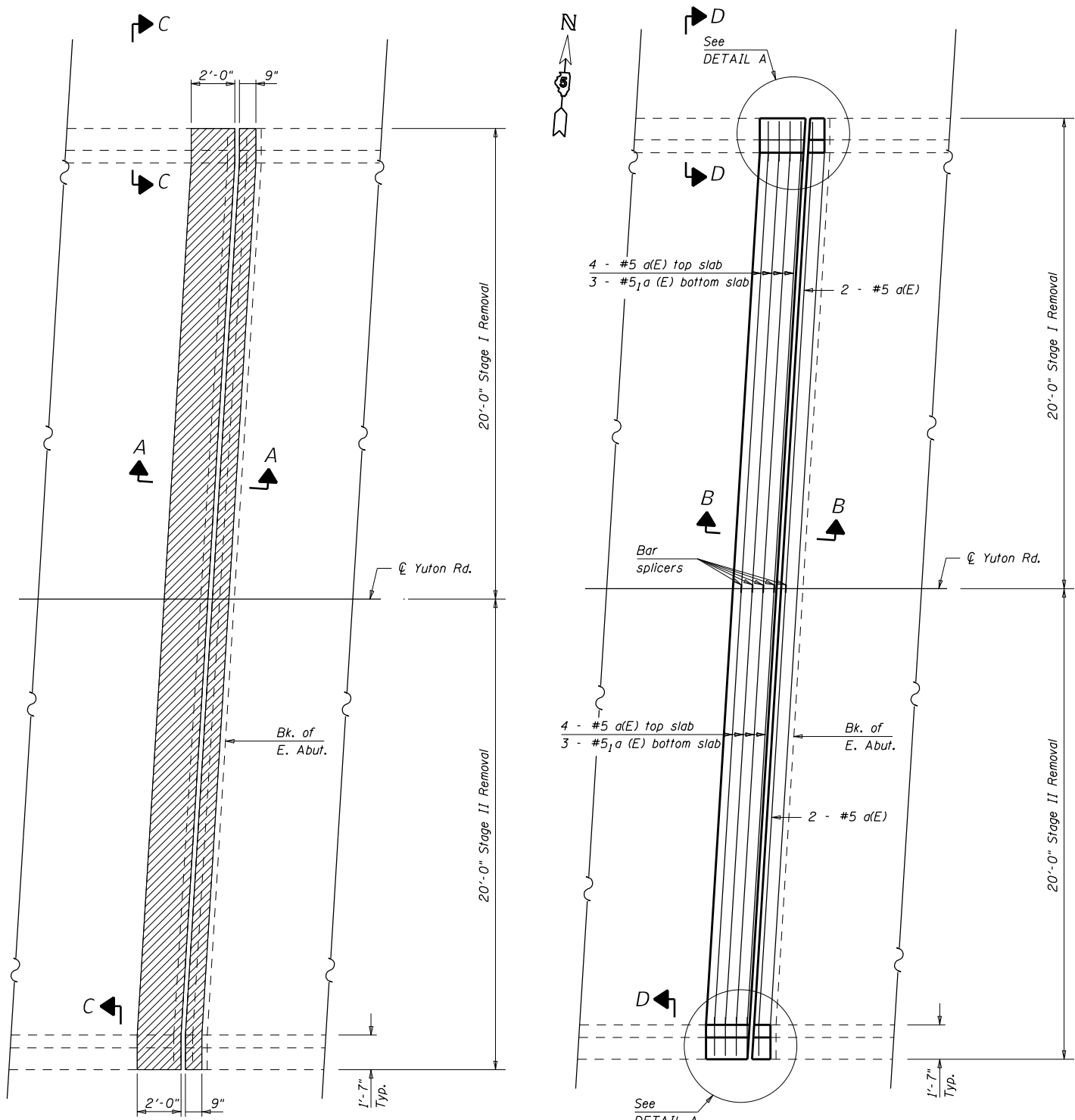
F.A.I. RTE.	SECTION	COUNTY	TOTAL SHEETS	SHEET NO.
55	MBPM 2021-1	MCLEAN	17	8
			CONTRACT NO. 70E94	
ILLINOIS FED. AID PROJECT				





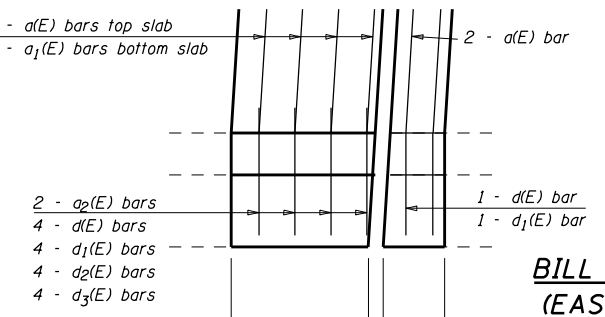
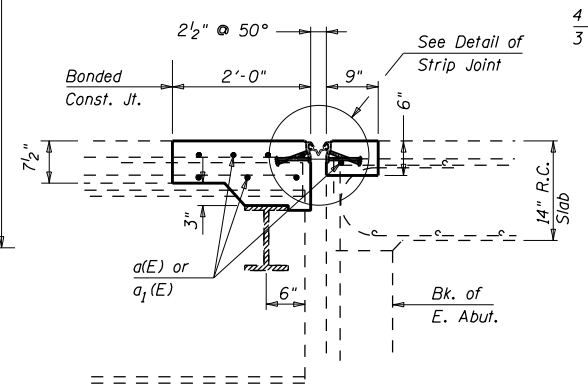
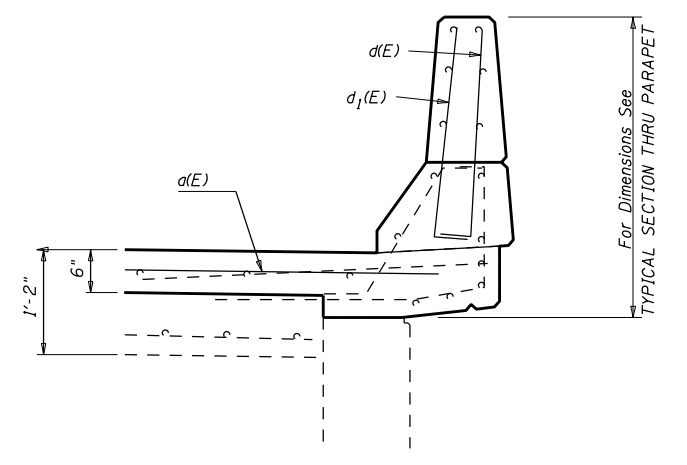
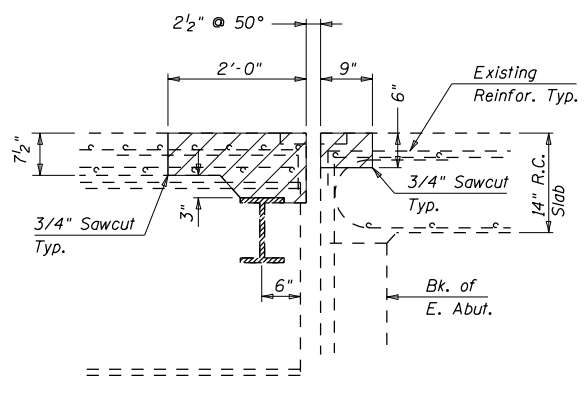
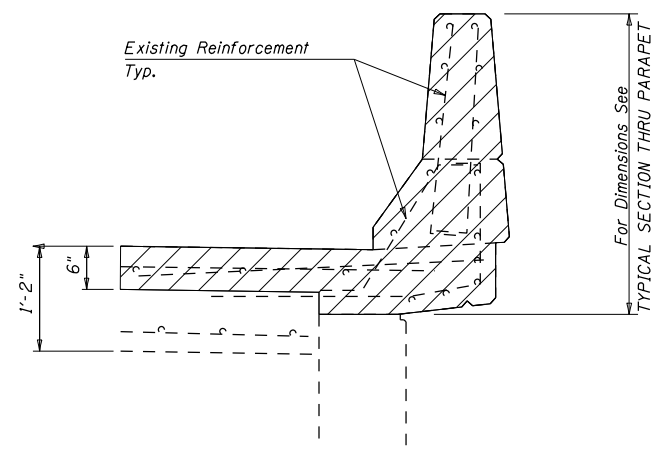
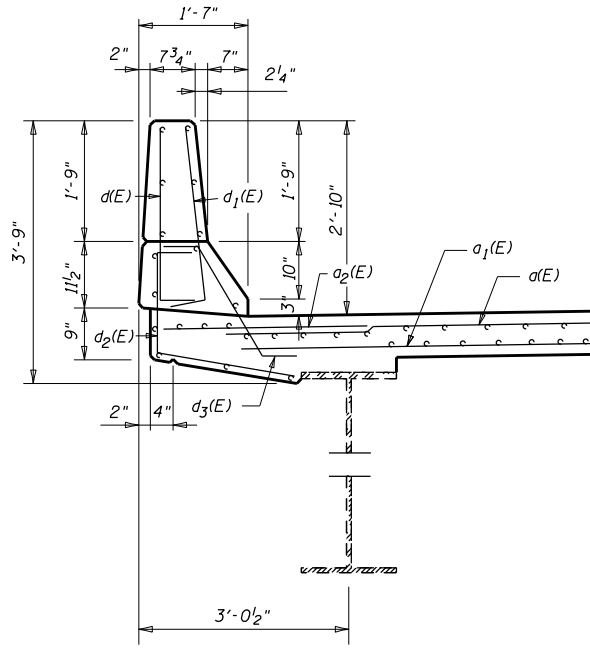
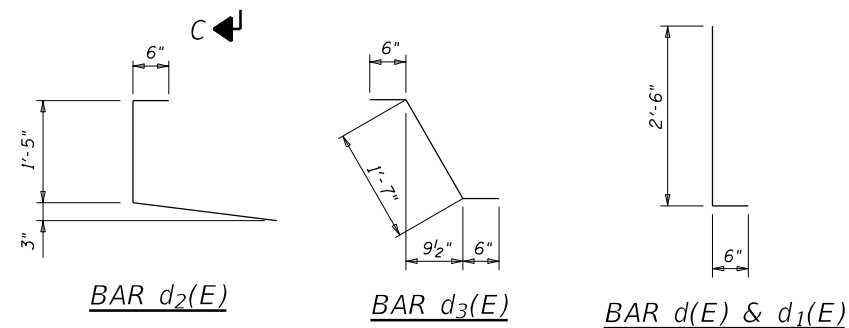


MODEL: \\MODELM\MAHFS  
 FILE: \\MODELM\proj\illinois\pwr\DOT\Documents\DOT\_Offices\Detailt\_5\Projects\0570224\CAD\Detail\Design\70E94\_Sht\_StructurePlans.dgn



4 - #5 a(E) top slab  
 3 - #5<sub>1a</sub>(E) bottom slab  
 2 - #5 a(E)

4 - #5 a(E) top slab  
 3 - #5<sub>1a</sub>(E) bottom slab  
 2 - #5 a(E)



**BILL OF MATERIAL (EAST ABUTMENT)**

Bar	No.	Size	Length	Shape	
a(E)	12	#5	20'-8"	—	
a <sub>1</sub> (E)	6	#5	20'-5"	—	
a <sub>2</sub> (E)	4	#6	4'-0"	—	
d(E)	8	#4	3'-0"	L	
d <sub>1</sub> (E)	8	#5	3'-0"	L	
d <sub>2</sub> (E)	8	#4	3'-11"	L	
d <sub>3</sub> (E)	8	#5	2'-7"	∩	
Concrete Removal				Cu Yd	3.4
Protective Coat				Sq Yd	14.0
Reinforcement Bars, Epoxy Coated				Pound	504.0
Bar Splicers				Each	9.0
Concrete Superstructures				Cu Yd	3.4

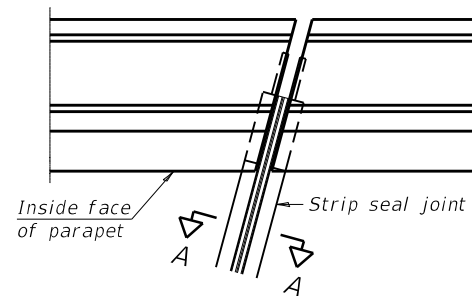
USER NAME = shererJM	DESIGNED - JMS	REVISED -
DRAWN - JMS	REVISED -	
PLOT SCALE = 40.0000' / in.	CHECKED -	REVISED -
PLOT DATE = 8/17/2020	DATE - 030320	REVISED -

**STATE OF ILLINOIS**  
**DEPARTMENT OF TRANSPORTATION**

**EAST ABUTMENT JOINT REPLACEMENT DETAILS**  
**S.N. 057-0223**

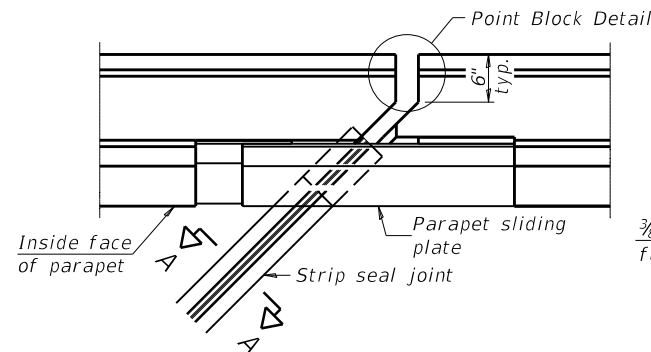
SCALE: NONE SHEET 3 OF 7 SHEETS STA. TO STA.

F.A.I. RTE.	SECTION	COUNTY	TOTAL SHEETS	SHEET NO.
55	MBPM 2021-1	MCLEAN	17	11
CONTRACT NO. 70E94				
ILLINOIS FED. AID PROJECT				

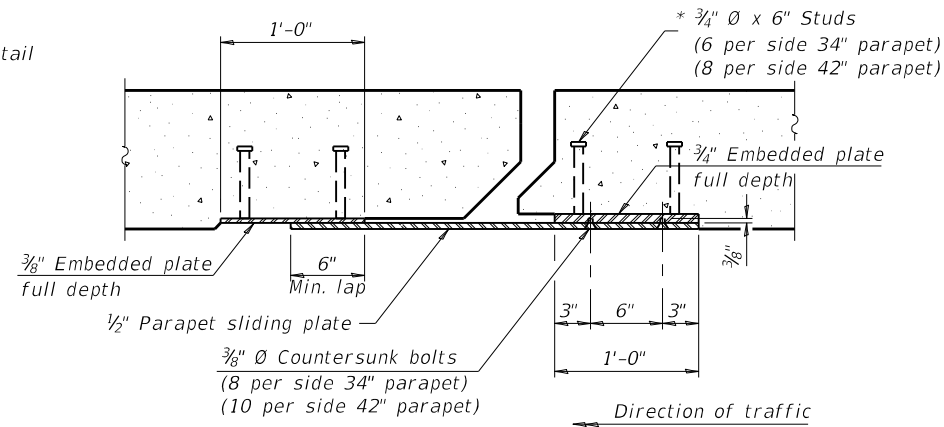


FOR SKEWS  $\leq 30^\circ$

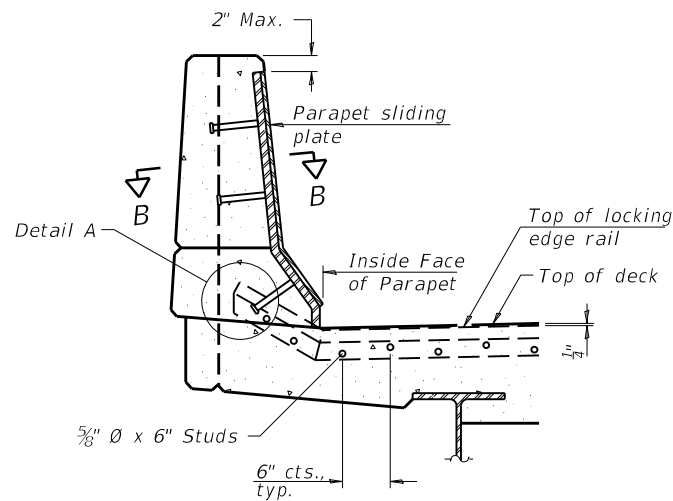
PLAN AT PARAPET



FOR SKEWS  $> 30^\circ$

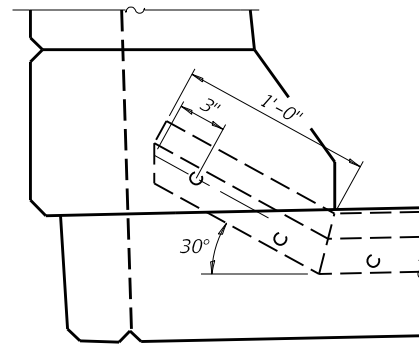


SECTION B-B

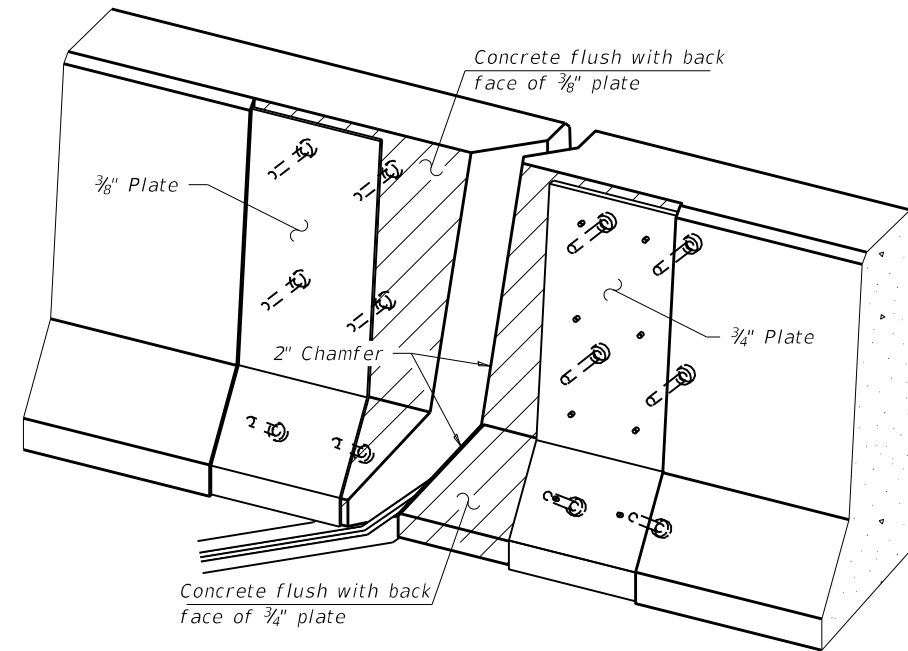


ELEVATION AT PARAPET

(Skews  $> 30^\circ$  shown. Skews  $\leq 30^\circ$  similar except as shown in plan view.)



DETAIL A



TRIMETRIC VIEW  
(Showing embedded plates only)

Notes:

The strip seal shall be made continuous and shall have a minimum thickness of  $1/4$ ". The configuration of the strip seal shall match the configuration of the locking edge rails. Open or "webbed" strip seal gland configurations are not permitted. The gland shall be sized for a maximum rated movement of 4 inches.

The locking edge rails depicted are configured for typical applications and are conceptual only. The actual configuration of the locking edge rails and matching strip seal may vary from manufacturer to manufacturer provided they fit the application and meet the minimum anchorage shown. Flanged edge rails, however, will not be allowed. Locking edge rails may exceed the  $4 1/2$ " maximum depth provided the anchorage system is revised according to the manufacturer's recommendation.

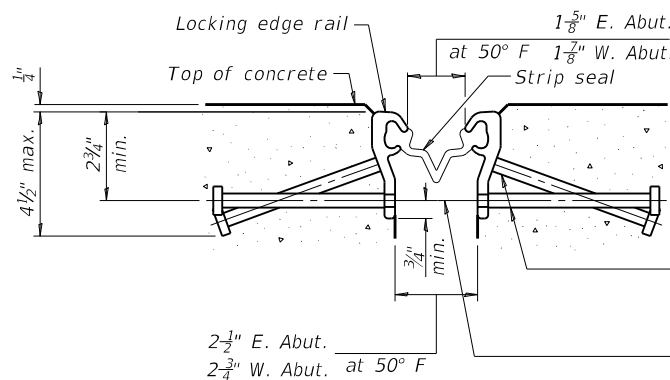
The manufacturer's recommended installation methods shall be followed.

All steel components shall be galvanized after fabrication according to Article 520.03 of the Standard Specifications.

The Maximum space between locking edge rail segments shall be  $3/16$ " and sealed with a suitable sealant; however, any rail joint within 10' measured perpendicular to the face of the curb or parapet shall be welded as shown in the locking edge rail splice detail.

Cost of parapet sliding plates, embedded plates, and anchorage studs included with Preformed Joint Strip Seal. 34" F-shape barrier shown, 42" F-shape similar as noted.

The concrete opening below the strip seal will vary based on the locking edge rail chosen by the Contractor. Deck and parapet lengths shown elsewhere in the plans are dimensioned to the concrete opening, not the joint opening, and are based on the rolled locking edge rail. If the Contractor elects to use a different locking edge rail, dimensional adjustments may be required. One exception to this would be the strip seal joint at the end of the precast bridge approach slab. For these cases the pavement connector length shall be adjusted, not the length of the bridge approach slab.



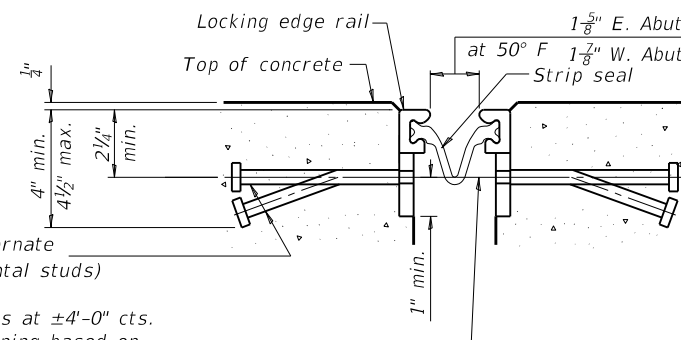
SHOWING ROLLED RAIL JOINT

\*  $5/8$ "  $\phi$  x 6" studs @ 6" cts. (alternate angled/bent studs with horizontal studs)

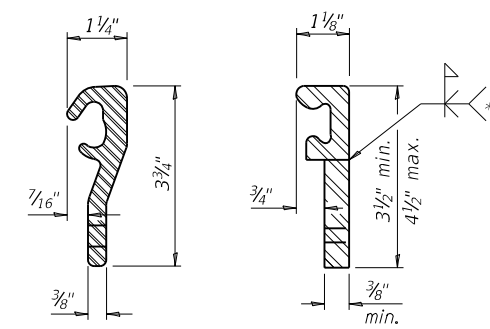
$3/8$ "  $\phi$  threaded rods in  $7/16$ "  $\phi$  holes at  $\pm 4$ "-0" cts. for holding the proper joint opening based on the temperature during the deck pour. Place to miss studs. All rods shall be burned, or sawed off flush with the plates after concrete is set.

SECTION A-A

\* Granular or solid flux filled headed studs conforming to Article 1006.32 of the Std. Specs., automatically end welded.



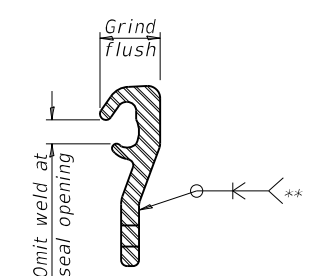
SHOWING WELDED RAIL JOINT



ROLLED (EXTRUDED) RAIL WELDED RAIL

LOCKING EDGE RAILS

\*\* Back gouge not required if complete joint penetration is verified by mock-up.



LOCKING EDGE RAIL SPLICE

The inside of the locking edge rail groove shall be free of weld residue. Rolled rail shown, welded rail similar.

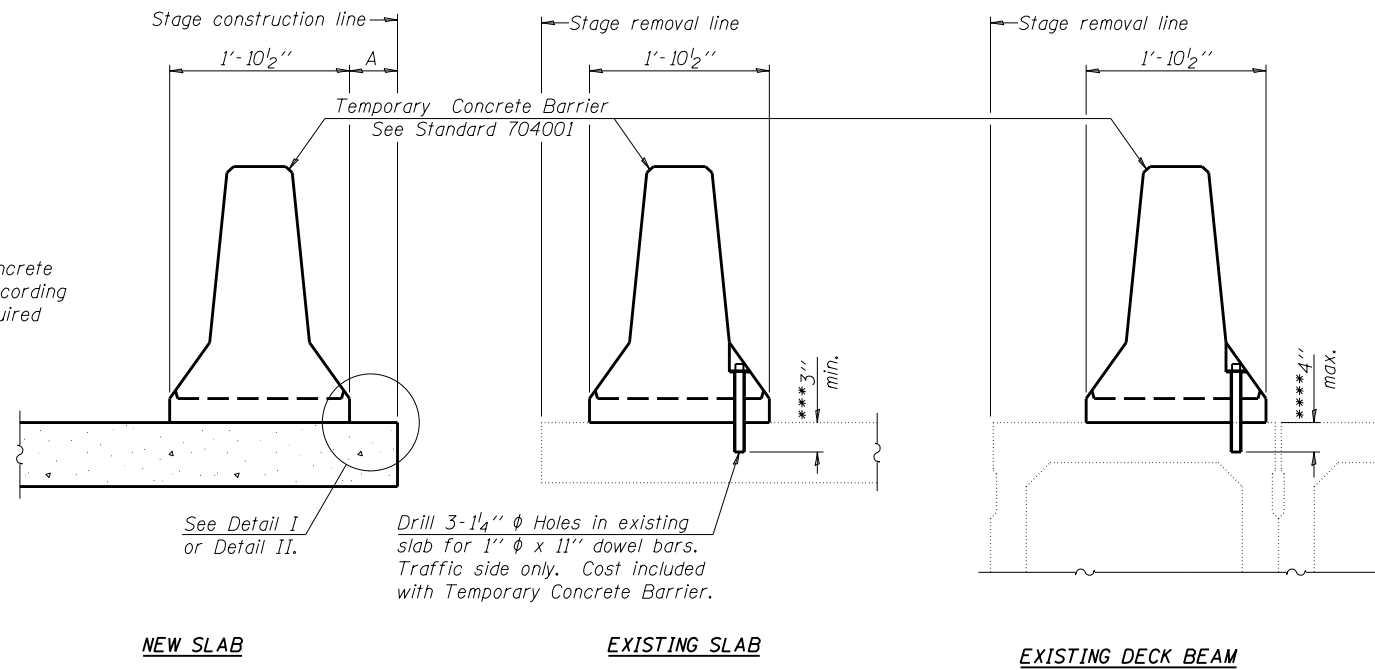
BILL OF MATERIAL

Item	Unit	Total
Preformed Joint Strip Seal	Foot	84.0

EJ-SS 8-11-17



When "A" is 3'-6" or less, the temporary concrete barrier shall be anchored to the new slab according to Detail I or Detail II. No anchorage is required when "A" is greater than 3'-6".



**SECTIONS THRU SLAB OR DECK BEAM**

**NOTES**

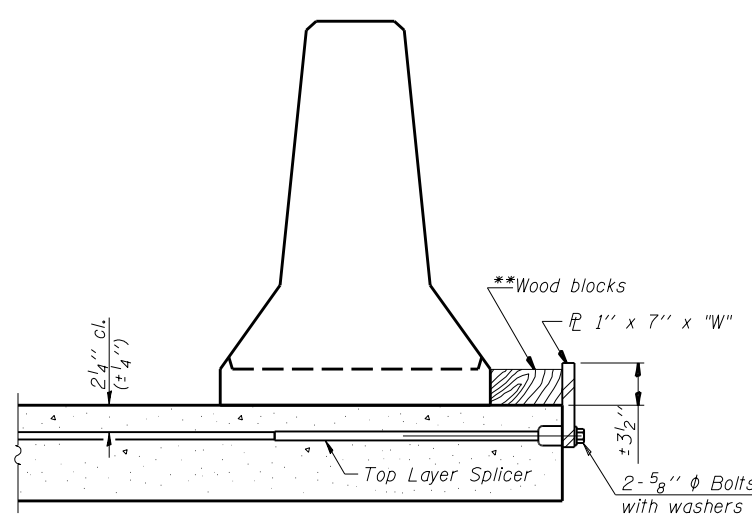
Detail I - With Bar Splicer or Couplers:  
Connect one (1) 1" x 7" x "W" steel PL to the top layer of couplers with 2-5/8" φ bolts screwed to coupler at approximate C of each barrier panel.

Detail II - With Extended Reinforcement Bars:  
Connect one (1) 1" x 7" x "W" steel PL to the concrete slab or concrete wearing surface with 2-5/8" φ Expansion Anchors or cast in place inserts spaced between the top layer of reinforcement at approximate C of each barrier panel.

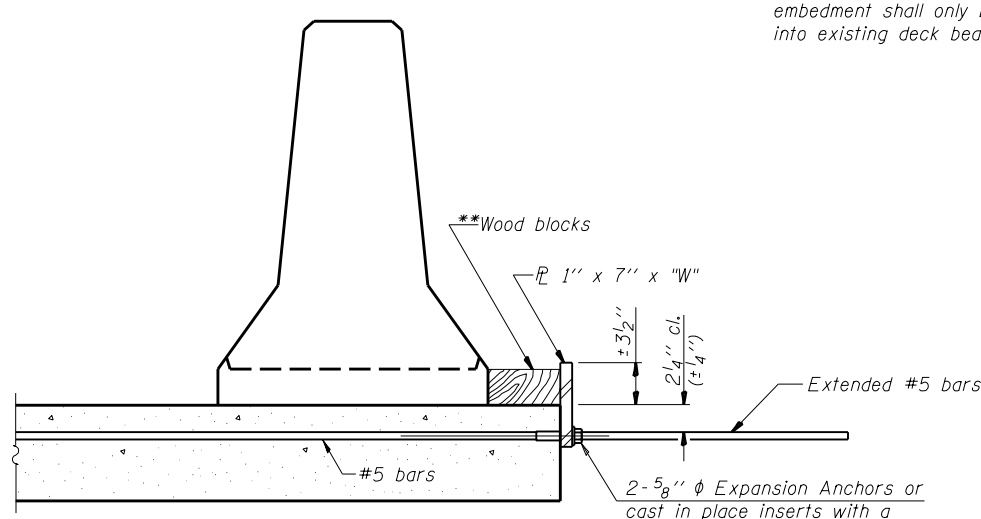
Cost of anchorage is included with Temporary Concrete Barrier. The 1" x 7" x "W" plate shall not be removed until stage II construction forms and all reinforcement bars are in place and the concrete is ready to be placed.

\*\*\* Dimension shown is minimum required embedment into concrete. If hot-mix asphalt wearing surface is present, minimum embedment shall be in addition to wearing surface depth.

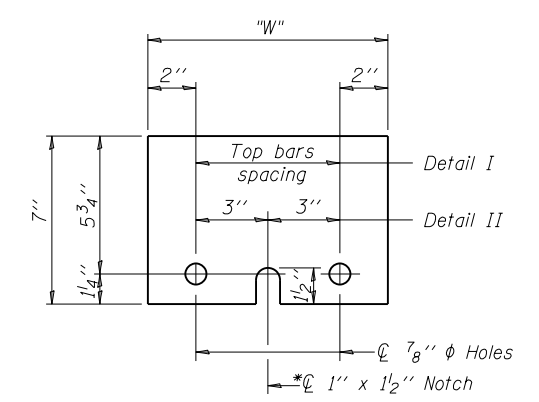
\*\*\*\* If existing deck beam is to remain in place after stage construction, embedment shall only be into wearing surface and not into existing deck beam concrete.



**DETAIL I**



**DETAIL II**



**STEEL RETAINER PL 1" x 7" x "W"**

\* Required only with Detail II

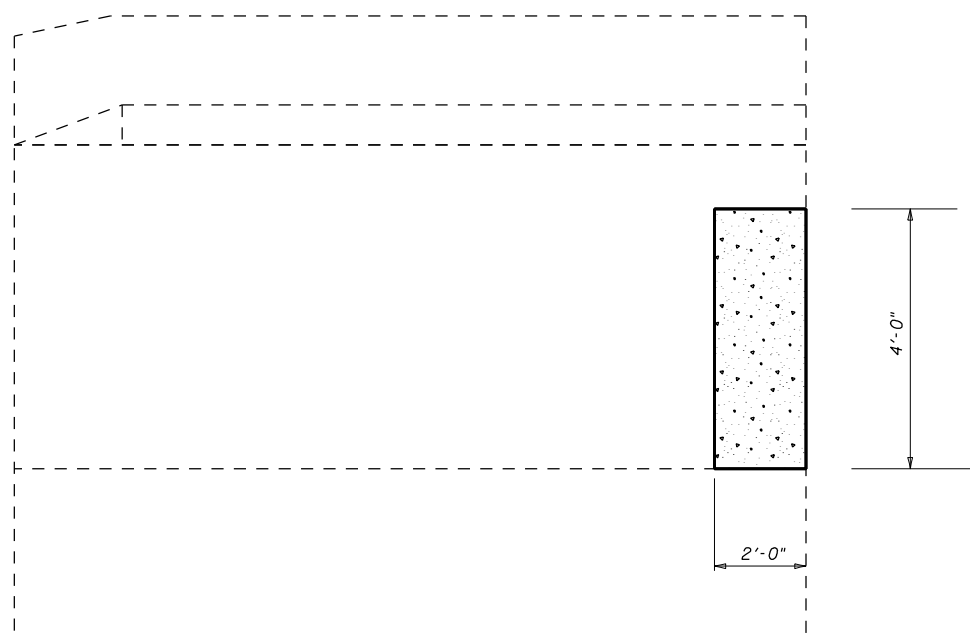
\*\* Wood blocks may be omitted when required to provide minimum stage traffic lane width. When the wood blocks are omitted, the concrete barrier shall be in direct contact with the steel retainer plate.

"W" = Top bars spacing + 4"

R-27

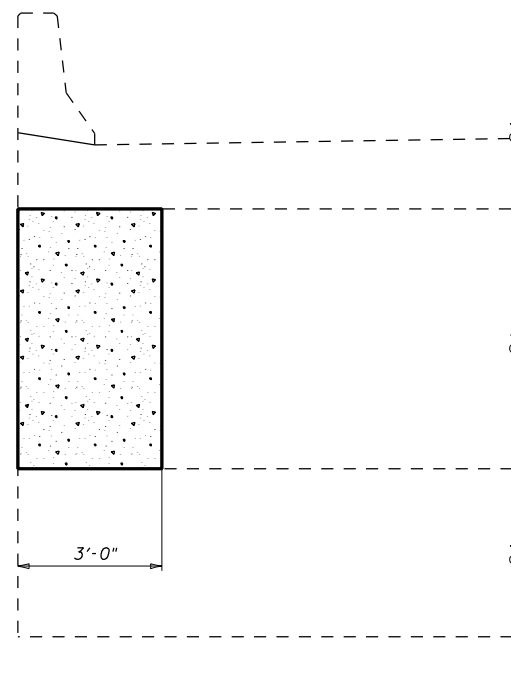
7-1-10

FILE NAME =	USER NAME = shererjm	DESIGNED -	REVISED -	<b>STATE OF ILLINOIS DEPARTMENT OF TRANSPORTATION</b>	<b>TEMPORARY CONCRETE BARRIER FOR STAGE CONSTRUCTION S.N. 057-0223</b>			F.A.I. R.T.E. =	SECTION	COUNTY	TOTAL SHEETS	SHEET NO.
px:\planroom.dot.illinois.gov\PWIDOT\Documents\IDOT Offices\District 5\Projects\0570223\Drawings\Design\70E94-Sht-StructurePlans\REVISED -	DRAWN to Design\70E94-Sht-StructurePlans\REVISED -	CHECKED -	REVISED -					55	MBPM 2021-1	MCLEAN	15	15
PLOT SCALE = 40.0000' / in.	CHECKED -	REVISED -	REVISED -					CONTRACT NO. 70E94				
PLOT DATE = 6/17/2020	DATE -	REVISED -	REVISED -					ILLINOIS FED. AID PROJECT				
					SCALE: None	SHEET 6	OF 7 SHEETS	STA.	TO STA.			



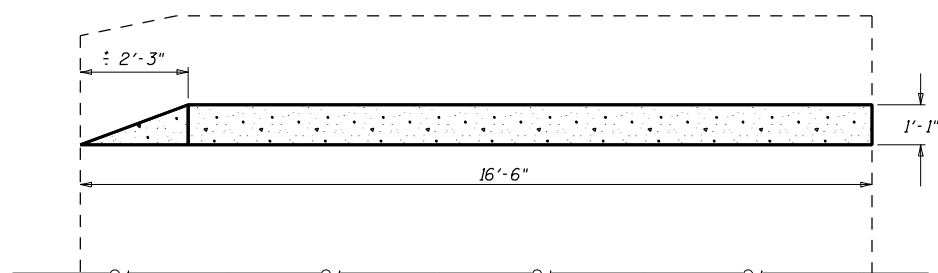
WINGWALL ELEVATION

\*(West Abutment)



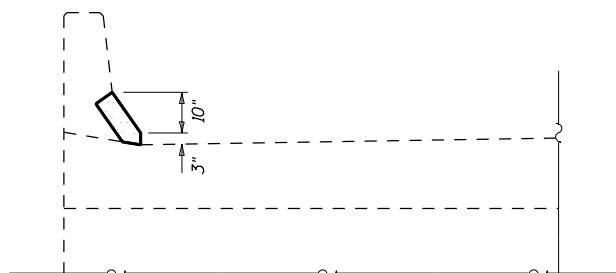
ABUTMENT ELEVATION

\*(West Abutment)



WINGWALL ELEVATION

\*\**(East Abutment)*



ABUTMENT ELEVATION

\*\**(East Abutment)*

\*North Corner West Abutment Shown,  
South Corner Similar.

\*\*South Corner East Abutment Shown,  
North Corner Similar.

**BILL OF MATERIAL**  
**(EAST & WEST ABUTMENT)**

Item	Unit	Total
Structural Repair of Concrete (Depth) <=5"	Sq Ft	74.0

FILE NAME =	USER NAME = shererjm	DESIGNED - JMS	REVISED -
p:\planroom.dot.illinois.gov\PIDOT\Documents\IDOT Offices\District 5\Projects\0570E	PROJECT = 0570E	DRAWN TO DESIGN = JMS	REVISED -
	PLOT SCALE = 40.0000' / in.	CHECKED -	REVISED -
	PLOT DATE = 6/17/2020	DATE - 030518	REVISED -

**STATE OF ILLINOIS**  
**DEPARTMENT OF TRANSPORTATION**

**DETAIL OF STRUCTURAL REPAIR**  
**OF CONCRETE <= 5" S.N. 057-0223**

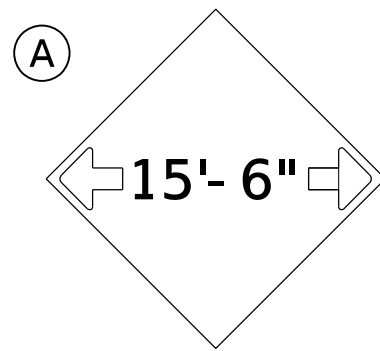
SCALE: NONE    SHEET NO. 7 OF 7 SHEETS    STA.    TO STA.

F.A.I. RTE.	SECTION	COUNTY	TOTAL SHEETS	SHEET NO.
55	MBPM 2021-1	MCLEAN	17	15
CONTRACT NO. 70E94				
ILLINOIS FED. AID PROJECT				

DESIGNER NOTE: PROVIDE MAP WITH SIGN LOCATIONS (A, B, ETC.) AND COORDINATE WITH TRAFFIC OPERATIONS ENGINEER.

INCLUDE DISTRICT SPECIAL PROVISION - "WIDTH RESTRICTION SIGNING"

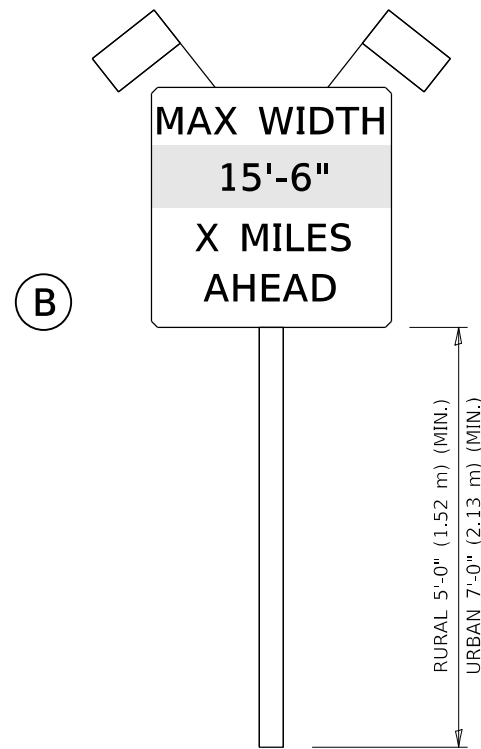
MODEL: \\MODELS\MHMF5  
FILE: \\models\p10\ghm\com.dal\illinois\p10\ghm\DOT\Documents\DOT\_Offices\District\_5\Projects\0520E94\CAD\Data\Design\70E94-01-DesignDetails.dwg



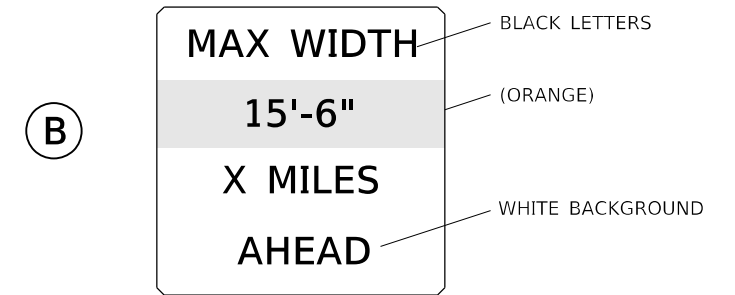
**W12-2(O)-48"x48"(1200x1200)**

SIGN (A) 2 SIGNS - W12-2(O)-48"x48"(1200x1200) ARE TO BE PLACED AS SHOWN IN THE PLANS OR AS DIRECTED BY THE ENGINEER.

SIGN (B) 2 SIGNS - (SIGN PANEL, TYPE II) AS SHOWN ARE TO BE PLACED AS SHOWN IN THE PLANS OR AS DIRECTED BY THE ENGINEER.



**SIGN PANEL, TYPE II**



**W12-I103(O)-48"x48"(1200x1200)  
"D" LETTERS/NUMBERS**

### GENERAL NOTES

1. ALL TRAFFIC CONTROL DEVICES SHALL BE FURNISHED, ERECTED AND MAINTAINED BY THE CONTRACTOR.
2. ALL (B) SIGNS SHALL HAVE FLAGS INSTALLED UNLESS OTHERWISE DIRECTED.
3. LOCATIONS OF TRAFFIC CONTROL DEVICES MAY BE ADJUSTED BY THE ENGINEER.
4. ALL TRAFFIC CONTROL SHOWN ON THIS SHEET SHALL BE PAID FOR AT THE CONTRACT LUMP SUM PRICE FOR WIDTH RESTRICTION SIGNING.
5. ALL SIGNS SHALL BE POST MOUNTED UNLESS OTHERWISE DIRECTED.
6. ALL SIGNS SHOWN ORANGE (O) SHALL BE FLUORESCENT ORANGE.
7. ALL SIGNS SHOWN SHALL CONSIST OF THE CURRENT RETROREFLECTIVE SHEETING REQUIREMENTS AS OUTLINED IN SECTION 1106.01 OF THE STANDARD SPECIFICATIONS BOOK.

Note: All dimensions are in INCHES (millimeters) unless otherwise shown.

**DISTRICT 5 DETAIL NO. X7200201**

USER NAME = shererjm	DESIGNED -	REVISED - 05/08
	DRAWN -	REVISED - 10/08 KJT
PLOT SCALE = 40.0000 ' / in.	CHECKED -	REVISED - 07/09 KJT
PLOT DATE = 6/17/2020	DATE -	REVISED - 03/11 KJT

**STATE OF ILLINOIS  
DEPARTMENT OF TRANSPORTATION**

**WIDTH RESTRICTION SIGNING**

SCALE: NONE SHEET 1 OF 1 SHEETS STA. TO STA.

F.A.I. RTE.	SECTION	COUNTY	TOTAL SHEETS	SHEET NO.
55	MBPM 2021-1	MCLEAN	17	16
				CONTRACT NO. 70E94
		ILLINOIS	FED. AID PROJECT	



