

STATE OF ILLINOIS  
DEPARTMENT OF TRANSPORTATION

F.A.S. RTE.	SECTION	COUNTY	TOTAL SHEETS	SHEET NO.
338	(34)RS-6,SW & (35)RS-4,SW	IROQUOIS	20	1
		ILLINOIS	CONTRACT NO. 66K51	

**INDEX**

- 1 COVER SHEET
- 2 GENERAL NOTES
- 3-7 SUMMARY OF QUANTITIES
- 8 TYPICAL SECTIONS
- 9-11 SCHEDULES
- 12 PROJECT LAYOUT
- 13 CULVERT REPLACEMENT DETAIL
- 14 CULVERT LINER INSERTION DETAIL
- 15-17 ADA RAMPS
- 18-20 DETAILS

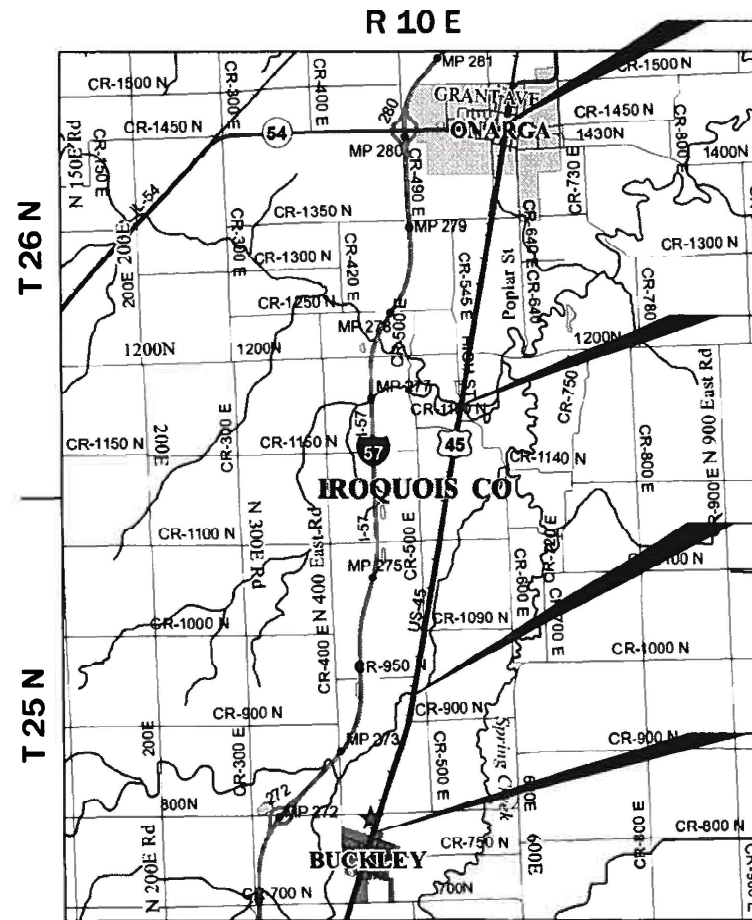
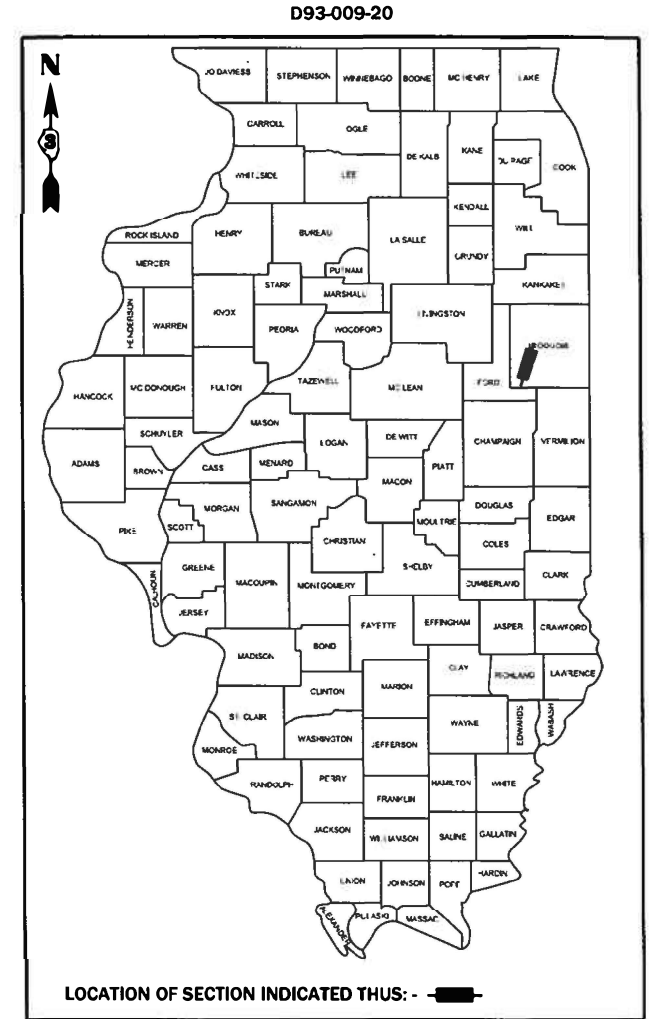
**LIST OF ILLINOIS DOT HIGHWAY STANDARDS**

- 000001-07 STANDARD SYMBOLS, ABBREVIATIONS AND PATTERNS
- 001006 DECIMAL OF AN INCH AND OF A FOOT
- 202001-01 EARTH MEDIAN DITCH CHECK
- 406201-01 MAILBOX TURNOUT
- 424001-11 PERPENDICULAR CURB RAMPS FOR SIDEWALKS
- 424006-04 DIAGONAL CURB RAMPS FOR SIDEWALKS
- 424011-04 CORNER PARALLEL CURB RAMPS FOR SIDEWALKS
- 424016-05 MID-BLOCK CURB RAMPS FOR SIDEWALKS
- 424021-05 DEPRESSED CORNER FOR SIDEWALKS
- 424026-03 ENTRANCE / ALLEY PEDESTRIAN CROSSINGS
- 424031-02 MEDIAN PEDESTRIAN CROSSINGS
- 630001-12 STEEL PLATE BEAM GUARDRAIL
- 630106-02 LONG-SPAN GUARDRAIL OVER CULVERT
- 630201-07 PCC/HMA STABILIZATION AT STEEL PLATE BEAM GUARDRAIL
- 630301-09 SHOULDER WIDENING FOR TYPE 1 (SPECIAL) GUARDRAIL TERMINALS
- 631031-16 TRAFFIC BARRIER TERMINAL, TYPE 6
- 667101-02 PERMANENT SURVEY MARKERS
- 668001-01 U.S. GEOLOGICAL SURVEY AND NATIONAL GEODETIC SURVEY BENCHMARKS
- 701006-05 OFF-ROAD OPERATIONS 2L, 2W, 15' (4.5 m) TO 24" (600 mm) FROM PAVEMENT EDGE
- 701011-04 OFF-ROAD MOVING OPERATIONS 2L, 2W, DAY ONLY
- 701301-04 LANE CLOSURE, 2L, 2V, SHORT TIME OPERATIONS
- 701306-04 LANE CLOSURE, 2L, 2V, SLOW MOVING OPERATIONS DAY ONLY, FOR SPEEDS ≥ 45 MPH
- 701311-03 LANE CLOSURE, 2L, 2V, MOVING OPERATIONS - DAY ONLY
- 701501-06 URBAN LANE CLOSURE, 2L, 2W, UNDIVIDED
- 701801-06 SIDEWALK, CORNER OR CROSSWALK CLOSURE
- 701901-08 TRAFFIC CONTROL DEVICES
- 780001-05 TYPICAL PAVEMENT MARKINGS
- 781001-04 TYPICAL APPLICATIONS RAISED REFLECTIVE PAVEMENT MARKERS

# PROPOSED HIGHWAY PLANS

FAS ROUTE 338 (US 45)  
SECTION (34)RS-6,SW & (35)RS-4,SW  
PROJECT STP-Q0QL(089)  
3P MILL & RESURF, ADA IMPROVEMENT  
IROQUOIS COUNTY

C-93-026-20



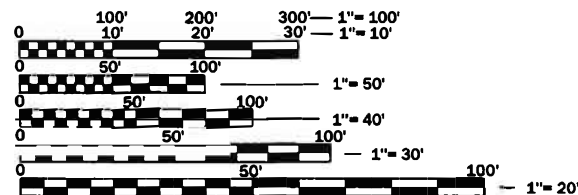
**PROJECT BEGINS**  
STA. 1529+71.5  
100' NORTH OF IL 54

**OMISSION STR. NO. 038-0210**  
STA. 1724+70 TO 1726+30

**OMISSION STR. NO. 038-0212**  
STA. 1897+29 TO 1898+91

**PROJECT ENDS**  
STA. 2012+16  
30' NORTH OF NORTH ST.

GROSS LENGTH = 42,451.2 FT. = 8.04 MILES  
NET LENGTH = 42,129.2 FT. = 7.98 MILES



FULL SIZE PLANS HAVE BEEN PREPARED USING STANDARD ENGINEERING SCALES. REDUCED SIZED PLANS WILL NOT CONFORM TO STANDARD SCALES. IN MAKING MEASUREMENTS ON REDUCED PLANS, THE ABOVE SCALES MAY BE USED.

J.U.L.I.E.  
JOINT UTILITY LOCATION INFORMATION FOR EXCAVATION  
1-800-892-0123  
OR 811

**PROJECT ENGINEER: BRAD DUNCAN, P.E.**  
**UNIT CHIEF: DARCY CARPENTER**  
DISTRICT 3 NO. (815) 434-6131  
CONTRACT NO. 66K51

FUNCTION CLASSIFICATION  
RURAL MAJOR COLLECTOR  
2019 ADT = 1000  
P.V. = 89.0% S.U. = 5.0% M.U. = 6.0%

STATE OF ILLINOIS  
DEPARTMENT OF TRANSPORTATION

SUBMITTED May 07, 2020  
*[Signature]* REGIONAL ENGINEER

June 26, 2020  
*[Signature]* ENGINEER OF DESIGN AND ENVIRONMENT

June 26, 2020  
*[Signature]* DIRECTOR OF HIGHWAYS PROJECT IMPLEMENTATION

**PRINTED BY THE AUTHORITY OF THE STATE OF ILLINOIS**

**GENERAL NOTES**

THE THICKNESS OF HMA SHOWN ON THE PLANS IS THE NOMINAL THICKNESS. DEVIATIONS FROM THE NOMINAL THICKNESS WILL BE PERMITTED WHEN SUCH DEVIATIONS OCCUR DUE TO IRREGULARITIES IN THE EXISTING SURFACE OR BASE ON WHICH THE HMA IS PLACED.

THE HMA SURFACE OF ALL MAILBOX TURNOUTS, PRIVATE ENTRANCES, COMMERCIAL ENTRANCES, AND SIDE ROADS SHALL BE MADE NEATLY, IN A WORKMANLIKE MANNER, AND SHALL ACCURATELY CONFORM TO THE SHAPES AND DIMENSIONS SHOWN ON THE PLAN DETAILS. IF REQUIRED BY THE ENGINEER, THE CONTRACTOR SHALL SAW CUT THE HMA SURFACE TO CONFORM TO THE SHAPES AND DIMENSIONS SHOWN ON THE PLAN DETAILS. THIS WORK WILL BE INCLUDED IN THE COST OF THE HMA SURFACE.

EXCEPT AS NOTED ON THE PLANS, PAVEMENT GRADES SHOWN ARE AT THE TOP OF PAVEMENT SURFACES.

THE ENGINEER WILL BE THE SOLE JUDGE CONCERNING CURING TIME FOR THE VARIOUS HMA LIFTS.

FOR STABILIZATION, ALL TYPE III BARRICADES WILL REQUIRE A MINIMUM OF FOUR SAND BAGS PER BARRICADE.

DETECTABLE WARNING SURFACES SHALL EXTEND 2.0 FT MINIMUM IN THE DIRECTION OF PEDESTRIAN TRAVEL. AT CURB RAMPS AND BLENDED TRANSITIONS, DETECTABLE WARNING SURFACES SHALL EXTEND THE FULL WIDTH OF THE RAMP RUN (EXCLUDING ANY FLARES) OR BLENDED TRANSITIONS. SOME DETECTABLE WARNING PRODUCTS REQUIRE A CONCRETE BORDER FOR PROPER INSTALLATION. THE CONCRETE BORDER SHALL NOT EXCEED 2 INCHES.

ON EXISTING PAVEMENT WHICH MAY BE SUPERELEVATED, THE NEW HMA PAVEMENT SHALL BE BUILT WITH THE SAME SUPERELEVATION UNLESS NEW SUPERELEVATION RATES ARE GIVEN ON THE PLANS.

ALL ELEVATIONS REFERRING TO U.S.G.S. MEAN SEA LEVEL DATUM.

ANY REFERENCE TO A STANDARD IN THESE PLANS SHALL BE INTERPRETED TO MEAN THE EDITION AS INDICATED BY THE SUBNUMBER SHOWN IN THE LIST OF STANDARDS OR THE COPY INCLUDED IN THESE PLANS.

THE FOLLOWING RATES OF APPLICATION HAVE BEEN USED IN CALCULATING PLAN QUANTITIES:

GRANULAR MATERIALS	2.05	TONS / CU YD
HMA RESURFACING	112	LBS / SQ YD / IN
SHORT TERM PAVEMENT MARKING	10	FT /100 FT OF APPLICATION
MIX FOR CRACKS, JTS & FLGWYS	0.0003	TONS / SQ YD
LEVEL BINDER (HAND METHOD)	0.0005	TONS / SQ YD
CALCIUM CHLORIDE	2	LB / SQ YD / APPLICATION

MEMBERS OF JULIE KNOWN TO BE WITHIN THE LIMITS OF THE IMPROVEMENT ARE: FRONTIER COMMUNICATIONS, AMEREN IP, MEDIACOM, AND VILLAGE OF ONARGA.

THE CONTRACTOR SHALL CONTACT JULIE AT LEAST 48 HOURS PRIOR TO EXCAVATION TO DETERMINE WHICH UTILITIES ARE IN THE AREA.

STATE OF ILLINOIS  
DEPARTMENT OF TRANSPORTATION  
DISTRICT THREE  
AS BUILT INFORMATION

STATE OF ILLINOIS  
DEPARTMENT OF TRANSPORTATION  
DISTRICT THREE

\_\_\_\_\_  
SUPERVISING CONSTRUCTION FIELD ENGINEER

PREPARED BY: \_\_\_\_\_  
DISTRICT STUDIES & PLANS ENGINEER

\_\_\_\_\_  
RESIDENT ENGINEER / TECHNICIAN

DATE: \_\_\_\_\_

START & END DATES  
OF CONSTRUCTION:

\_\_\_\_\_

INSPECTORS:

\_\_\_\_\_

\_\_\_\_\_

EXAMINED BY: \_\_\_\_\_  
DISTRICT CONSTRUCTION ENGINEER

\_\_\_\_\_  
DISTRICT MATERIALS ENGINEER

\_\_\_\_\_  
DISTRICT OPERATIONS ENGINEER

STATE OF ILLINOIS  
DEPARTMENT OF TRANSPORTATION

GENERAL NOTES

SCALE: \_\_\_\_\_ SHEET \_\_\_\_ OF \_\_\_\_ SHEETS STA. \_\_\_\_\_ TO STA. \_\_\_\_\_

F.A.S. RTE.	SECTION	COUNTY	TOTAL SHEETS	SHEET NO.
338	(34)RS-6,SW & (35)RS-4,SW	IROQUOIS	20	2
CONTRACT NO. 66K51				
ILLINOIS FED. AID PROJECT				

MODEL: Default  
FILE: h:\m\c\p\pub\h\m\com\data\illinois\poc\PIWDOT\Documents\IBDOT\Office\Dist\ctc\_3\Project\0366K51\CADD\0366K51-1-ctc-cover.dgn

MODEL: Default  
 FILE NAME: p:\highway\com.dat\illinois.gov\PIWDOT\Documents\DOT\_Offices\District\_3\Projects\0366K51\CADD\0366K51-1st-cover.dgn

CODE NO.	ITEM	UNIT	TOTAL QUANTITY	CONSTR. CODE	
				FED 80%	STATE 20%
				ROADWAY	
				0005	RURAL
20200100	EARTH EXCAVATION	CU YD	149	149	
20800150	TRENCH BACKFILL	CU YD	20	20	
21400100	GRADING AND SHAPING DITCHES	FOOT	1000	1000	
25000210	SEEDING, CLASS 2A	ACRE	0.14	0.14	
25000400	NITROGEN FERTILIZER NUTRIENT	POUND	12	12	
25000500	PHOSPHORUS FERTILIZER NUTRIENT	POUND	12	12	
25000600	POTASSIUM FERTILIZER NUTRIENT	POUND	12	12	
25100630	EROSION CONTROL BLANKET	SQ YD	667	667	
28100107	STONE RIPRAP, CLASS A4	SQ YD	4	4	
28200200	FILTER FABRIC	SQ YD	4	4	
40200800	AGGREGATE SURFACE COURSE, TYPE B	TON	6	6	
40600290	BITUMINOUS MATERIALS (TACK COAT)	POUND	86,027	86,027	
40600400	MIXTURE FOR CRACKS, JOINTS, AND FLANGWAYS	TON	38	38	
40600990	TEMPORARY RAMP	SQ YD	570	570	

USER NAME = pletschtr	DESIGNED - _____	REVISED - _____
	DRAWN - _____	REVISED - _____
PLOT SCALE = 100.0000' / in.	CHECKED - _____	REVISED - _____
PLOT DATE = 5/6/2020	DATE - _____	REVISED - _____

**STATE OF ILLINOIS  
 DEPARTMENT OF TRANSPORTATION**

SUMMARY OF QUANTITIES			
SCALE: _____	SHEET _____	OF _____ SHEETS	STA. _____ TO STA. _____

F.A.S. RTE.	SECTION	COUNTY	TOTAL SHEETS	SHEET NO.
338	(34)RS-6,5W & (35)RS-4,5W	IROQUOIS	20	3
				CONTRACT NO. 66K51
ILLINOIS FED. AID PROJECT				

MODEL: Default  
 FILE: Model: P:\pub\lansom.dwg  
 PROJECT: I:\projects\66K51\CAD\Drawings\DOT\Office\Drawings\3\Project\66K51\CONTRACT\66K51-CH-COVER.dwg

CODE NO.	ITEM	UNIT	TOTAL QUANTITY	CONSTR. CODE	
				FED 80%	STATE 20%
				ROADWAY	
				0005	RURAL
40602978	HOT-MIX ASPHALT BINDER COURSE, 1L- 9.5, N50	TON	14177	14177	
40604050	HOT-MIX ASPHALT SURFACE COURSE, 1L-9.5, MIX "C", N50	TON	12389	12389	
40800050	INCIDENTAL HOT-MIX ASPHALT SURFACING	TON	182	182	
42400100	PORTLAND CEMENT CONCRETE SIDEWALK 4 INCH	SQ FT	182	182	
* 42400800	DETECTABLE WARNINGS	SQ FT	16	16	
44000100	PAVEMENT REMOVAL	SQ YD	30	30	
44000164	HOT-MIX ASPHALT SURFACE REMOVAL, 3 3/4"	SQ YD	126582	126582	
44000500	COMBINATION CURB AND GUTTER REMOVAL	FOOT	110	110	
44000600	SIDEWALK REMOVAL	SQ FT	231	231	
44201794	CLASS D PATCHES, TYPE III, 12 INCH	SQ YD	30	30	
48101200	AGGREGATE SHOULDERS, TYPE B	TON	2670	2670	
542A5485	PIPE CULVERTS, CLASS A, TYPE 1 EQUIVALENT ROUND-SIZE 30"	FOOT	40	40	
54213675	PRECAST REINFORCED CONCRETE FLARED END SECTIONS 30"	EACH	2	2	
54390180	INSERTION CULVERT LINER 24"	FOOT	40	40	

\* = SPECIALTY ITEM

USER NAME = pletschtr DESIGNED - _____ DRAWN - _____ PLOT SCALE = 100.0000' / in. CHECKED - _____ PLOT DATE = 5/6/2020 DATE - _____	REVISED - _____ REVISED - _____ REVISED - _____ REVISED - _____	<b>STATE OF ILLINOIS</b> <b>DEPARTMENT OF TRANSPORTATION</b>	<b>SUMMARY OF QUANTITIES</b> SCALE: _____ SHEET ____ OF ____ SHEETS STA. _____ TO STA. _____	<table border="1"> <tr> <th>F.A.S. RTE.</th> <th>SECTION</th> <th>COUNTY</th> <th>TOTAL SHEETS</th> <th>SHEET NO.</th> </tr> <tr> <td>338</td> <td>(34)RS-6,SW &amp; (35)RS-4,SW</td> <td>IROQUOIS</td> <td>20</td> <td>4</td> </tr> </table>	F.A.S. RTE.	SECTION	COUNTY	TOTAL SHEETS	SHEET NO.	338	(34)RS-6,SW & (35)RS-4,SW	IROQUOIS	20	4
F.A.S. RTE.	SECTION	COUNTY	TOTAL SHEETS	SHEET NO.										
338	(34)RS-6,SW & (35)RS-4,SW	IROQUOIS	20	4										
			ILLINOIS FED. AID PROJECT CONTRACT NO. 66K51											

MODEL: Default  
 FILE: Model - 30x40planroom.dwg  
 PROJECT: R:\Projects\DOT\Documents\DOT - Offices\Dir\trct\_3\project\0366K51\CAD\0366K51-1-1-1-1-cover.dwg

CODE NO.	ITEM	UNIT	TOTAL QUANTITY	CONSTR. CODE	
				FED 80%	STATE 20%
				ROADWAY	
				0005	RURAL
56109210	WATER VALVES TO BE ADJUSTED	EACH	1	1	
60300305	FRAMES AND LIDS TO BE ADJUSTED	EACH	2	2	
60603800	COMBINATION CONCRETE CURB AND GUTTER, TYPE B-6.12	FOOT	110	110	
* 63000001	STEEL PLATE BEAM GUARDRAIL, TYPE A, 6 FOOT POSTS	FOOT	2037.5	2037.5	
* 63100085	TRAFFIC BARRIER TERMINAL, TYPE 6	EACH	8	8	
* 63100167	TRAFFIC BARRIER TERMINAL, TYPE 1 (SPECIAL) TANGENT	EACH	12	12	
63200310	GUARDRAIL REMOVAL	FOOT	2637.5	2637.5	
66900105	UNDERGROUND STORAGE TANK REMOVAL	EACH	1	1	
* 66900200	NON-SPECIAL WASTE DISPOSAL	CU YD	165	165	
* 66900530	SOIL DISPOSAL ANALYSIS	EACH	8	8	
* 66901001	REGULATED SUBSTANCES PRE-CONSTRUCTION PLAN	LSUM	1	1	
* 66901003	REGULATED SUBSTANCES FINAL CONSTRUCTION REPORT	LSUM	1	1	
* 66901006	REGULATED SUBSTANCES MONITORING	CAL DA	6	6	
67100100	MOBILIZATION	L SUM	1	1	

\*= SPECIALTY ITEM

USER NAME = pletschtr	DESIGNED - _____	REVISED - _____
PLOT SCALE = 100,0000 ' / in.	DRAWN - _____	REVISED - _____
PLOT DATE = 5/6/2020	CHECKED - _____	REVISED - _____
	DATE - _____	REVISED - _____

**STATE OF ILLINOIS  
 DEPARTMENT OF TRANSPORTATION**

SUMMARY OF QUANTITIES			
SCALE: _____	SHEET _____ OF _____ SHEETS	STA. _____	TO STA. _____

F.A.S. RTE.	SECTION	COUNTY	TOTAL SHEETS	SHEET NO.
338	(34)RS-6,5W & (35)RS-4,5W	IROQUOIS	20	5
				CONTRACT NO. 66K51
			ILLINOIS FED. AID PROJECT	

MODEL: Default  
FILE: \\nas01c.rockwell.com\data\illinois\pwr\DOT\Documents\DOT\_Offices\Distct\_3\projects\0366K51\CAD\Drawn\0366K51-ctr-cover.dgn

CODE NO.	ITEM	UNIT	TOTAL QUANTITY	CONSTR. CODE	
				FED 80% STATE 20%	ROADWAY 0005 RURAL
70100460	TRAFFIC CONTROL AND PROTECTION, STANDARD 701306	L SUM	1		1
70102640	TRAFFIC CONTROL AND PROTECTION, STANDARD 701801	L SUM	1		1
70300100	SHORT TERM PAVEMENT MARKING	FOOT	6377		6377
70300150	SHORT TERM PAVEMENT MARKING REMOVAL	SQ FT	702		702
* 72501000	TERMINAL MARKER - DIRECT APPLIED	EACH	12		12
* 78001110	PAINT PAVEMENT MARKING - LINE 4"	FOOT	170064		170064
* 78001130	PAINT PAVEMENT MARKING - LINE 6"	FOOT	21258		21258
* 78100100	RAISED REFLECTIVE PAVEMENT MARKER	EACH	531		531
* 78200005	GUARDRAIL REFLECTORS, TYPE A	EACH	58		58
78300200	RAISED REFLECTIVE PAVEMENT MARKER REMOVAL	EACH	531		531
X0326341	REATTACH END SECTION	EACH	1		1
X0327809	LINEAR DELINEATOR PANELS, 4 INCH	EACH	56		56
X1200050	BOX CULVERT REMOVAL	FOOT	38		38
X2700015	PREFORMED PLASTIC PAVEMENT MARKING, TYPE D - LINE 24"	FOOT	68		68

\*= SPECIALTY ITEM

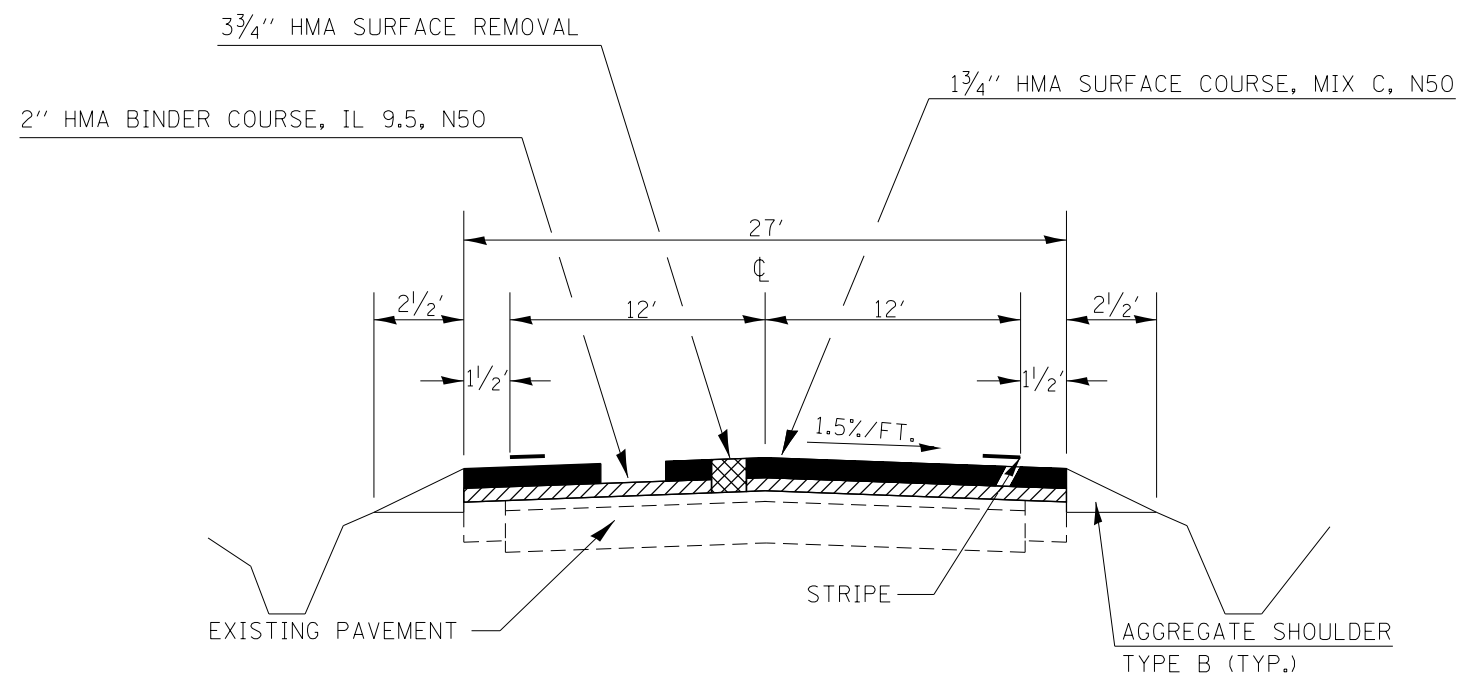
USER NAME = pletschr DESIGNED - _____ DRAWN - _____ PLOT SCALE = 100.0000' / in. CHECKED - _____ PLOT DATE = 5/6/2020 DATE - _____	REVISED - _____ REVISED - _____ REVISED - _____ REVISED - _____	<b>STATE OF ILLINOIS</b> <b>DEPARTMENT OF TRANSPORTATION</b>	<b>SUMMARY OF QUANTITIES</b>	F.A.S. RTE. 338 SECTION (34)RS-6,5W & (35)RS-4,5W COUNTY IROQUOIS TOTAL SHEETS 20 SHEET NO. 6 CONTRACT NO. 66K51 ILLINOIS FED. AID PROJECT
SCALE: _____ SHEET ____ OF ____ SHEETS STA. _____ TO STA. _____				

CODE NO.	ITEM	UNIT	TOTAL QUANTITY	CONSTR. CODE	
				FED 80%	STATE 20%
				ROADWAY	
				0005	RURAL
X4401198	HOT-MIX ASPHALT SURFACE REMOVAL, VARIABLE DEPTH	SQ YD	1297	1297	
X4810200	AGGREGATE SHOULDER REMOVAL	CU YD	29	29	
* X7830090	GROOVING FOR RECESSED PAVEMENT MARKING 25"	FOOT	68	68	
Z0005216	HOT-MIX ASPHALT STABILIZATION 6" AT STEEL PLATE BEAM GUARD RAIL	SQ YD	780	780	
Z0005305	BOX CULVERTS TO BE CLEANED	FOOT	60	60	
Z0030850	TEMPORARY INFORMATION SIGNING	SQ FT	42	42	
Z0033700	LONGITUDINAL JOINT SEALANT	FOOT	42194	42194	
Z0034105	MATERIAL TRANSFER DEVICE	TON	26,566	26,566	
Z0048665	RAILROAD PROTECTIVE LIABILITY INSURANCE	L SUM	1	1	

\*= SPECIALTY ITEM

MODEL: Default  
FILE: \\nrcs-pub\pub\rooms\dat\illinois.gov\PI\DOT\Documents\DOT\_Offices\Director\_3\Projects\0366K51\CAD\Drawn\0366K51-ctr-cover.dgn

USER NAME = pletschtr	DESIGNED - _____	REVISED - _____	<b>STATE OF ILLINOIS DEPARTMENT OF TRANSPORTATION</b>	<b>SUMMARY OF QUANTITIES</b>			F.A.S. RTE.	SECTION	COUNTY	TOTAL SHEETS	SHEET NO.
PLOT SCALE = 100.0000' / in.	DRAWN - _____	REVISED - _____					338	(34)RS-6,5W & (35)RS-4,5W	IROQUOIS	20	7
PLOT DATE = 5/6/2020	CHECKED - _____	REVISED - _____		SCALE: _____ SHEET ____ OF ____ SHEETS STA. _____ TO STA. _____			CONTRACT NO. 66K51				
	DATE - _____	REVISED - _____		ILLINOIS FED. AID PROJECT							



## TYPICAL SECTION

STA. 1529+71 TO STA. 2012+16

HMA MIXTURE REQUIREMENT TABLE

LOCATIONS:	ENTIRE PROJECT	ENTIRE PROJECT	ENTIRE PROJECT
MIXTURE USE(S):	HMA BINDER	HMA SURFACE	HMA INCIDENTAL
BINDER GRADE (PG):	PG 64-22	PG 64-22	PG 64-22
DESIGN AIR VOIDS:	4.0% @ N50	4.0% @ N50	4.0% @ N50
MIXTURE COMPOSITION: (MIXTURE GRADATION)	IL 9.5	IL 9.5	IL 9.5
FRICTION AGGREGATE:		MIXTURE C	
MIXTURE WEIGHT:	112.0 LB/SY/IN	112.0 LB/SY/IN	112.0 LB/SY/IN
QUALITY MANAGEMENT PROGRAM:	QCP	QCP	QCQA
SUBLOT SIZE:	1000 TONS	1000 TONS	N/A
DENSITY TEST METHOD:	CORES	CORES	SATISFACTION OF ENGINEER

FILE NAME =	USER NAME = pletschr	DESIGNED - _____	REVISED - _____
pw:\planroom\dot\illinois.gov\PWDOT\Documents\DOT	Office\District 3\Projects\D366K51\CADData\D366K51-shhdetail	DRAWN - _____	REVISED - _____
Default	PLOT SCALE = 100,0000' / in.	CHECKED - _____	REVISED - _____
	PLOT DATE = 5/6/2020	DATE - _____	REVISED - _____

STATE OF ILLINOIS  
DEPARTMENT OF TRANSPORTATION

TYPICAL SECTION

SCALE: \_\_\_\_\_ SHEET \_ OF \_ SHEETS STA. \_\_\_\_\_ TO STA. \_\_\_\_\_

F.A.P. RTE.	SECTION	COUNTY	TOTAL SHEETS	SHEET NO.
338	(34)RS-6,SW & (35)RS-4,SW	IROQUOIS	20	8
			CONTRACT NO. 66K51	
		ILLINOIS	FED. AID PROJECT	



MAINLINE SCHEDULE											
STA. TO STA.	LENGTH	WIDTH	HMA SURF CSE MIX "C" N50 (1 3/4")	BINDER COURSE IL 9.5 N50 (2")	HMA SURF REM 3 3/4"	MIX FOR JTS, CRACKS & FLGWYS	LONG JOINT SEALANT	BIT. MAT'L (TACK COAT)	AGG SHLD TY B	TEMP RAMP	
	FT	FT	TONS	TONS	SQ YD	TONS	FOOT	POUND	TONS	SQ YD	
US 45											
1529+71.5	1647+36.5	11765	27	3458.9	3953	35295	10.6	11765	23824	744.4	37.5
STA EQ 1647+36.5BK = 1676+29AH											
1676+29	1693+22.4	1693	27	497.9	569	5080	1.5	1693	3429	107.1	37.5
STA EQ 1693+22.4BK = 1695+95.3AH											
1695+95.3	1724+70	2875	27	845.2	966	8624	2.6	2875	5821	181.9	37.5
OMISSION SN 038-0210											
1726+30	1897+29	17099	27	5027.1	5745	51297	15.4	17099	34625	1081.9	37.5
OMISSION SN 038-0212											
1898+91	1971+57.4	7266	27	2136.3	2442	21799	6.5	7266	14714	459.8	37.5
STA EQ 1971+57.4BK = 1997+20.5AH											
1997+20.5	2012+16	1496	27	423.4	502	4487	1.3	1496	3028	94.6	37.5
TOTALS											
	42194			12389	14177	126582	38	42194	85443	2670	225

GUARDRAIL SCHEDULE										
LOCATION	LENGTH OF NEED	GUARD-RAIL REM	TBT TY 1 SPECIAL TANGENT	TBT TYPE 6	SPBGR TY A 6 FT POSTS	AGGREGATE SHOULDER REMOVAL*	HMA STAB 6" AT SPBGR (IL 19.0, N50)	LINEAR DELINEATOR PANELS 4"	GUARD-RAIL REFL TY A	TERMINAL MARKER DIRECT APPLIED
	FOOT	FOOT	EACH	EACH	FOOT	CU YD	SQYD	EACH	EACH	EACH
SB APPROACH (038-0210)	562.5	562.5	1	1	487.5	7.0	188	7	7	1
SB DEPARTURE (038-0210)	362.5	362.5	1	1	287.5	4.5	121	5	5	1
NB APPROACH (038-0210)	362.5	362.5	1	1	287.5	4.5	121	5	5	1
NB DEPARTURE (038-0210)	600	600	1	1	525	7.4	200	8	8	1
SB APPROACH (CULV 400)			1					1	1	1
SB DEPARTURE (CULV 400)			1					1	1	1
NB APPROACH (CULV 400)			1					20	20	1
NB DEPARTURE (CULV 400)			1					1	1	1
SB APPROACH (038-0212)	250	250	1	1	175	2.1	58	3	3	1
SB DEPARTURE (038-0212)	125	125	1	1	50	0.6	17	2	2	1
NB APPROACH (038-0212)	250	250	1	1	175	2.1	58	3	3	1
NB DEPARTURE (038-0212)	125	125	1	1	50	0.6	17	2	2	1
TOTAL		2637.5	12	8	2037.5	29	780	56	58	12

\*AGGREGATE SHOULDER REMOVAL TO BE USED WHERE HMA STABILIZATION AT GUARDRAIL IS REQUIRED. THIS MATERIAL IS ALLOWED TO BE USED AT SIDEROAD RADII.

SIDEROADS & ENTRANCES								
NAME	STATION	RT/LT	AREA	VARIABLE	INCIDENTAL	BIT	AGG	TEMP
				DEPTH	HMA SURF	MATL	SURF	
				SURF	MIX "C"	(TACK	CSE	RAMP
				REM	N50	COAT)	TY B	SQ YD
				SQ YD	TON	POUND	TON	
IL 54	1530+71.5	LT/RT	180	180.0	25.2	81.0		60.0
WILSON AVE	1535+99	LT	45	45.0	6.3	20.3		15.0
ROOSEVELT AVE	1540+22	LT/RT	90	90.0	12.6	40.5		30.0
N BEND DR	1550+78	LT	122	122.0	17.1	54.9		
1350 N	1584+04	LT	45	45.0	6.3	20.3		15.0
1200 N	1695+95	LT	45	45.0	6.3	20.3		15.0
1190 N	1712+30	RT	45	45.0	6.3	20.3		15.0
1160 N	1735+53	LT/RT	90	90.0	12.6	40.5		30.0
1100 N	1806+81	LT/RT	90	90.0	12.6	40.5		30.0
1000 N	1860+67	LT/RT	90	90.0	12.6	40.5		30.0
950 N	1888+12	RT	45	45.0	6.3	20.3		15.0
900 N	1915+00	LT	45	45.0	6.3	20.3		15.0
800 N	1971+49	LT/RT	180	180.0	25.2	81.0		60.0
ENTRANCES								
PE	1702+82	LT (10X18)	20	20.0	2.8	9.0	1.5	
PE	1707+04	LT (10X18)	20	20.0	2.8	9.0	1.5	
PE	1708+10	LT (10X18)	20	20.0	2.8	9.0	1.5	
PE	1713+38	LT (10X18)	20	20.0	2.8	9.0	1.5	
PE	1860+69	LT (10X18)	20	20.0	2.8	9.0		
PE	1940+42	LT (10X18)	20	20.0	2.8	9.0		
CE	2010+93	LT (10X18)	20	20.0	2.8	9.0		
TOTALS				1297	182	584	6	345

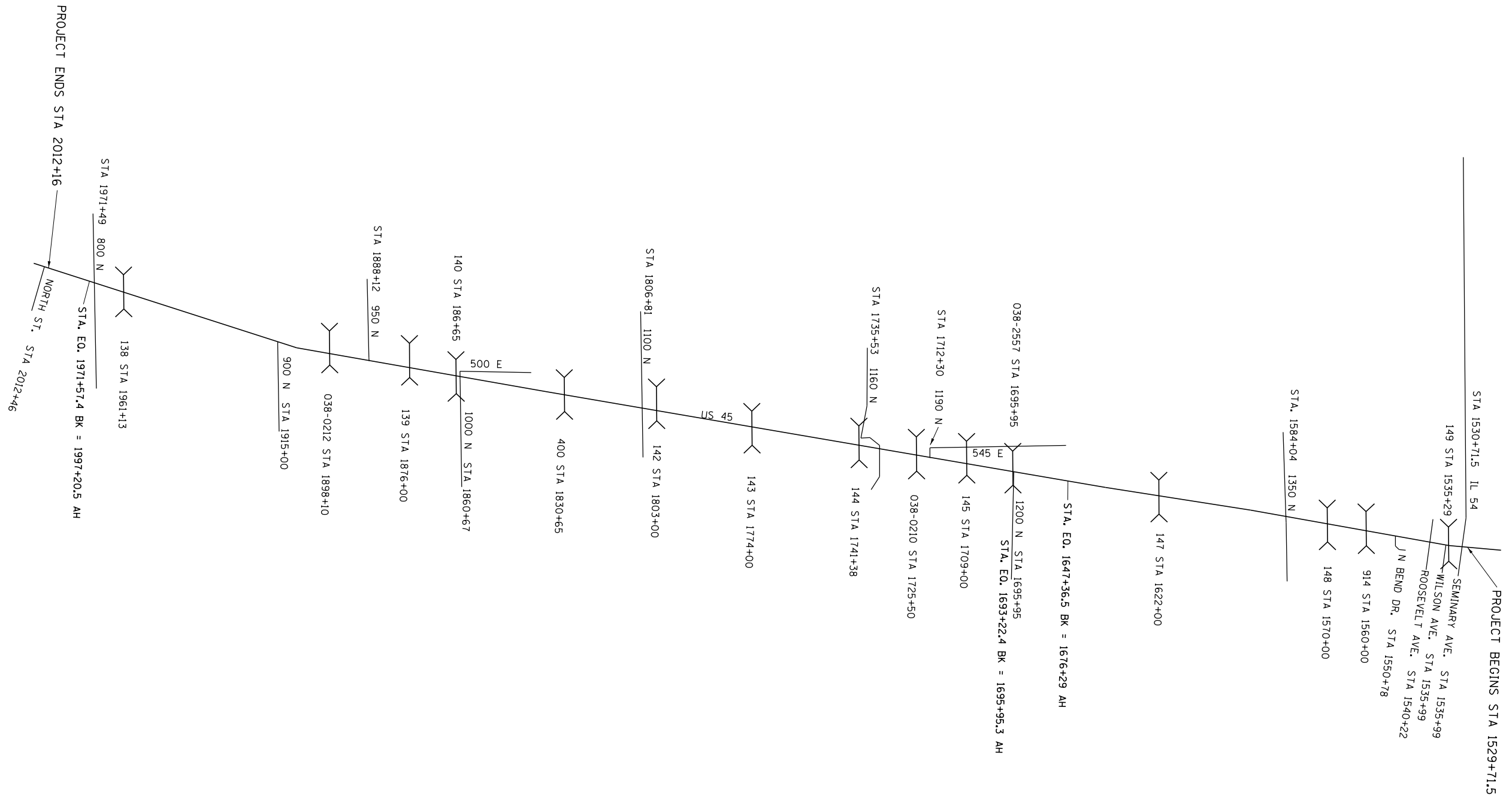
PAVEMENT MARKING SCHEDULE										
LOCATION	STA	FOOT	PAINT		PREFORMED PLASTIC TYPE D, 24" WHITE	GROOVING FOR REC PAVT MRK - 25"	SHORT- TERM MARK	SHORT-TERM PAVT MARK REM	RAISED REFLECTIVE PVMT MKR REM	RAISED REFLECTIVE PVMT MARKERS
			4" WHITE	6" YELLOW						
			FOOT	FOOT	FOOT	FOOT	FOOT	SQ FT	EACH	EACH
	1529+71.5	1647+36.5	11765	23530	2941	68	68	1765	194	147
STA EQ 1647+36.5BK = 1676+29AH										
	1676+29	1693+22.4	1693.40	3386.8	423		254	28	21	21
STA EQ 1693+22.4BK = 1695+95.3AH										
	1695+95.3	1971+57.4	27562.10	55124.2	6891		4134	455	345	345
STA EQ 1971+57.4BK = 1997+20.5AH										
	1997+20.5	2012+16	1495.50	2991	374		224	25	19	19
SUB TOTAL			42516	85032	10629	68	6377	702	531	531
SECOND APPLICATION OF PAINT			42516	85032	10629					
GRAND TOTAL			85032	170064	21258	68	6377	702	531	531

DRAINAGE SCHEDULE																	
LOCATION	SIDE	LENGTH	WIDTH	DEPTH	GRADING AND SHAPING DITCHES	EARTH EX	FILTER FABRIC	STONE RIPRAP, CL A4	BOX CULVERTS TO BE CLEANED	INSERTION CULVERT LINER 24"	REATTACH END SECTION	SEEDING CL 2A	NITRO FERT NUT	PHOSP FERT NUT	POT FERT NUT	EROSION CONTROL BLANKET	
STA. TO STA.	LT/RT	FOOT	FOOT	FOOT	FOOT	CU YD	SQ YD	SQ YD	FOOT	FOOT	EACH	ACRE	LB	LB	LB	SQ YD	
RURAL QUANTITIES																	
1556+00.00	1559+50.00	RT	350.0	6	0.67	350.0	52.1					0.048	4.339	4.339	4.339	233.33	
1586+50.00	1589+00.00	RT	250.0	6	0.67	250.0	37.2					0.034	3.099	3.099	3.099	166.67	
1697+00.00	1698+00.00	RT	100.0	6	0.67	100.0	14.9					0.014	1.240	1.240	1.240	66.67	
1807+50.00	1809+50.00	RT	200.0	6	0.67	200.0	29.8					0.028	2.479	2.479	2.479	133.33	
1970+00.00	1971+00.00	RT	100.0	6	0.67	100.0	14.9					0.014	1.240	1.240	1.240	66.67	
1695+95		LT						4.0	4.0								
1697+00		RT/LT							60.0								
1830+65		RT									1.0						
1961+13		RT/LT								40.0							
					<b>TOTALS</b>	<b>1000</b>	<b>149</b>	<b>4</b>	<b>4</b>	<b>60</b>	<b>40</b>	<b>1</b>	<b>0.14</b>	<b>12</b>	<b>12</b>	<b>12</b>	<b>667</b>

U.S. RTE. 45		LOCATION: IL 54 IN ONARGA TO NORTH ST IN BUCKLEY (NCL)				IROQUOIS COUNTY	
MONUMENT NUMBER	DESCRIPTION	EXISTING MONUMENT TYPE	PROPOSED MONUMENT TYPE	MONUMENT RECORD TO BE RECORDED	RESPONSIBILITY		
N/A	NO PERMANENT SURVEY MARKERS OR SECTION CORNER MARKERS TO BE SET ON THIS JOB	N/A	N/A	N/A	N/A		
<p>NO KNOWN SURVEY OR CENTERLINE CONTROL MONUMENTS ARE ON THE ROAD SURFACE THAT WILL BE DISTURBED BY THE RESURFACING. UNKNOWN MONUMENTS MAY EXIST. THE R.E. MUST TIE AND REQUEST PLATS AND PLANS TO GPS ANY UNKNOWN MONUMENT FOUND WHICH IS SUBJECT TO DESTRUCTION BY THE RESURFACING WORK, AND INFORM THEM TO RESET THE MONUMENT UPON JOB COMPLETION. NO MONUMENT RECORDS ARE REQUIRED FOR THIS JOB.</p>							

SIDEWALK SCHEDULE FOR NEW RAMP INSTALLATION						
LOCATION SIDE STREET	QUAD	SIDEWALK REMOVAL	PCC SIDEWALK 4"	CC&G REMOVAL	CC&G B-6.12	DETECTABLE WARNINGS
		SQ FT	SQ FT	FOOT	FOOT	SQ FT
SEMINARY ST	NW	56.3	56.3	30.4	30.4	8
	NE	125.8	125.8	80	80	8
	SW					
	SE	48.6				
<b>TOTAL</b>		<b>231</b>	<b>182</b>	<b>110</b>	<b>110</b>	<b>16</b>

EXCESS EARTHEN MATERIAL FROM THIS WORK CAN BE PLACED AROUND SIDEROAD RADII.



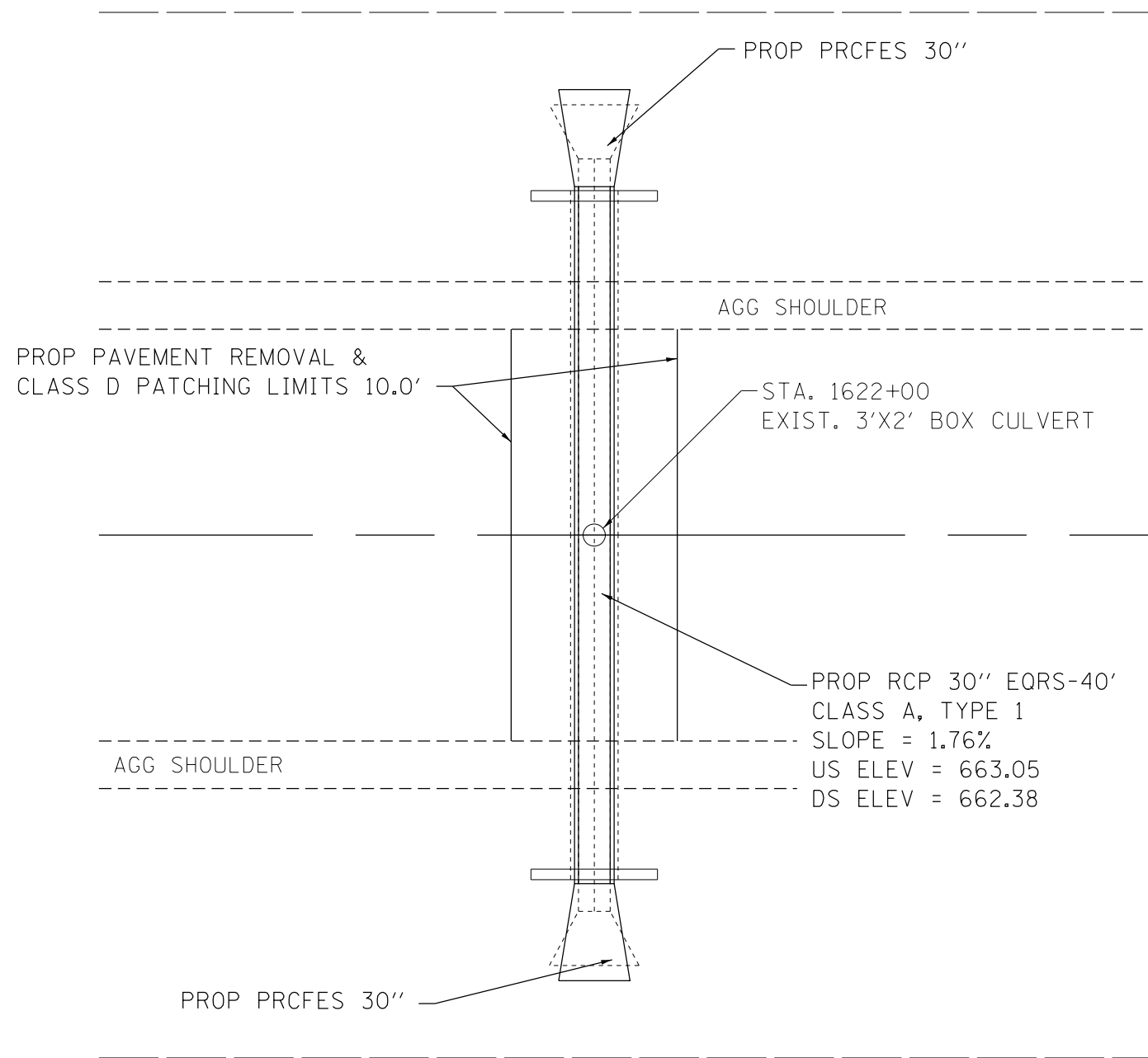
FILE NAME =	USER NAME = pletschr	DESIGNED - _____	REVISED - _____
pw:\planroom\dot\illinois.gov\PWIDOT\Documents\IDOT	Illinois\District 3\Projects\D366K51\CADD\Drawings\1-shd\detail	DRAWN - _____	REVISED - _____
Default	PLOT SCALE = 100,0000' / in.	CHECKED - _____	REVISED - _____
	PLOT DATE = 5/6/2020	DATE - _____	REVISED - _____

**STATE OF ILLINOIS  
DEPARTMENT OF TRANSPORTATION**

**PROJECT LAYOUT**

SCALE: \_\_\_\_\_ SHEET \_\_\_\_\_ OF \_\_\_\_\_ SHEETS STA. \_\_\_\_\_ TO STA. \_\_\_\_\_

F.A.P. RTE.	SECTION	COUNTY	TOTAL SHEETS	SHEET NO.
338	(34)RS-6,SW & (35)RS-4,SW	IROQUOIS	20	12
CONTRACT NO. 66K51				
ILLINOIS FED. AID PROJECT				



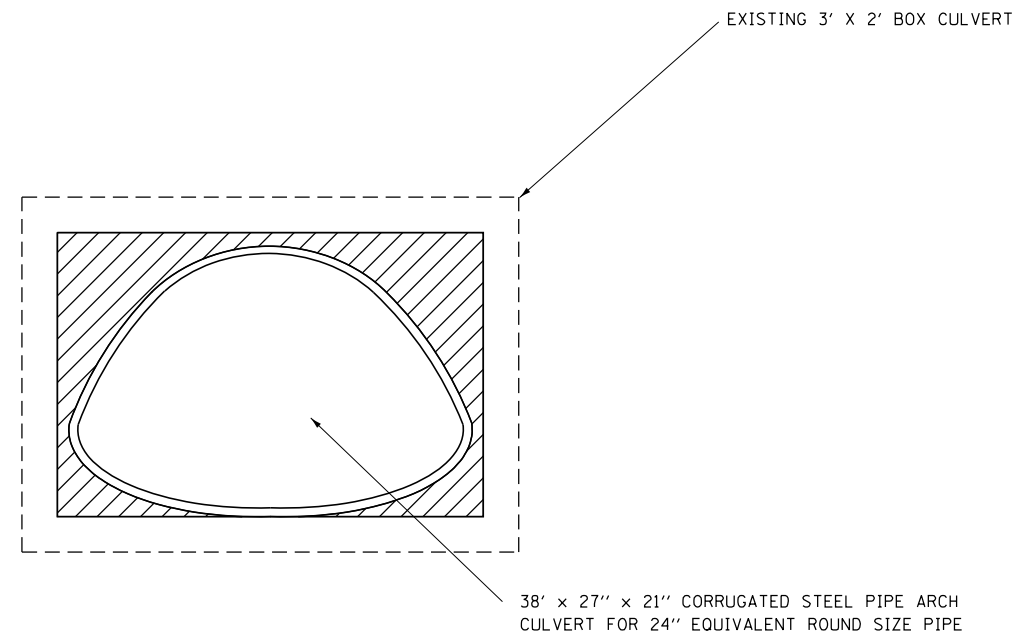
**TOTAL BILL OF MATERIAL**

ITEM	UNIT	TOTAL
Box Culvert Removal	Foot	38
Precast Reinforced Concrete Flared End Sections 30"	Each	2
Pipe Culverts, Class A, Type 1 EQRS 30"	Foot	40
Pavement Removal	Sq Yd	30
*Class D Patches, Type III, 12 inch	Sq Yd	30
Trench Backfill	Cu Yd	20

\*Assumed 2 Patches

**NOTES:**

1. REMOVAL OF EXISTING HEADWALLS & PCC END SECTIONS INCLUDED IN THE COST FOR BOX CULVERT REMOVAL
2. REGRADE DITCHES AS NECESSARY TO ACCOMODATE NEW INVERTS
3. SEE SPECIAL PROVISION RESTORATION OF WORK AREA FOR RESTORING AREA DISTURB BY THIS WORK.



**CULVERT #138**

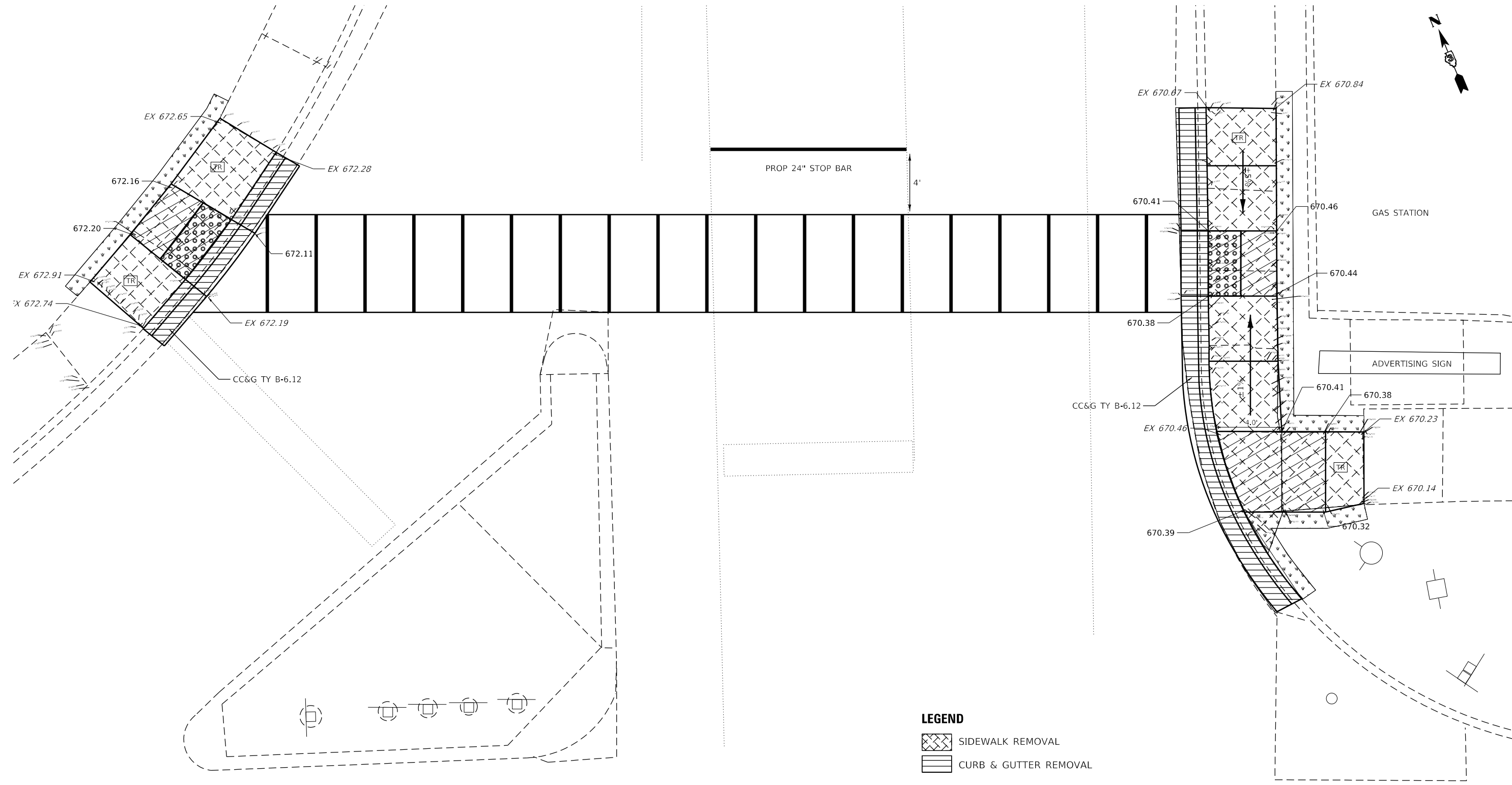
**NOTES:**

1. EXISTING BOX CULVERT SHALL BE DEWATERED AND CLEANED OF ALL FOREIGN MATERIALS.
2. PIPE CULVERTS SHALL BE INSERTED INTO EXISTING BOX CULVERT AS SHOWN ON PLAN DETAIL.
3. HATCHED AREA REPRESENTS APPROVED GROUT MIXTURE.
4. THIS WORK WILL BE PAID FOR AT THE CONTRACT UNIT PRICE PER FOOT FOR INSERTION CULVERT LINER.

FILE NAME =	USER NAME = pletschr	DESIGNED - _____	REVISED - _____	<b>STATE OF ILLINOIS DEPARTMENT OF TRANSPORTATION</b>	<b>CULVERT INSERTION LINER DETAIL</b>			F.A.P. RTE.	SECTION	COUNTY	TOTAL SHEETS	SHEET NO.
pw:\planroom\dot\illinois.gov\PWIDOT\Documents\IDOT	Files\District 3\Projects\D366K51\CADData\ID366K51-shhdetail	DRAWN - _____	REVISED - _____					338	(34)RS-6,SW & (35)RS-4,SW	IROQUOIS	20	14
Default	PLOT SCALE = 100,0000' / in.	CHECKED - _____	REVISED - _____		CONTRACT NO. 66K51							
	PLOT DATE = 5/6/2020	DATE - _____	REVISED - _____		SCALE: _____	SHEET _ OF _ SHEETS	STA. _____ TO STA. _____	ILLINOIS FED. AID PROJECT				

**EXISTING CONDITIONS  
NW QUADRANT**

**EXISTING CONDITIONS  
NE QUADRANT**



**LEGEND**

- SIDEWALK REMOVAL
- CURB & GUTTER REMOVAL



**SCALE IN FEET**

MODEL: Default  
 FILE: Model - 30x30planroom.dwg  
 PROJECT: RWIDOT\Documents\DOT - Office\Drawings\3\Projects\0366K51\CADD\0366K51-1-10-ADA.dwg

USER NAME = pletschr	DESIGNED - _____	REVISED - _____
	DRAWN - _____	REVISED - _____
PLOT SCALE = 6.0000' / in.	CHECKED - _____	REVISED - _____
PLOT DATE = 5/6/2020	DATE - _____	REVISED - _____

**STATE OF ILLINOIS  
DEPARTMENT OF TRANSPORTATION**

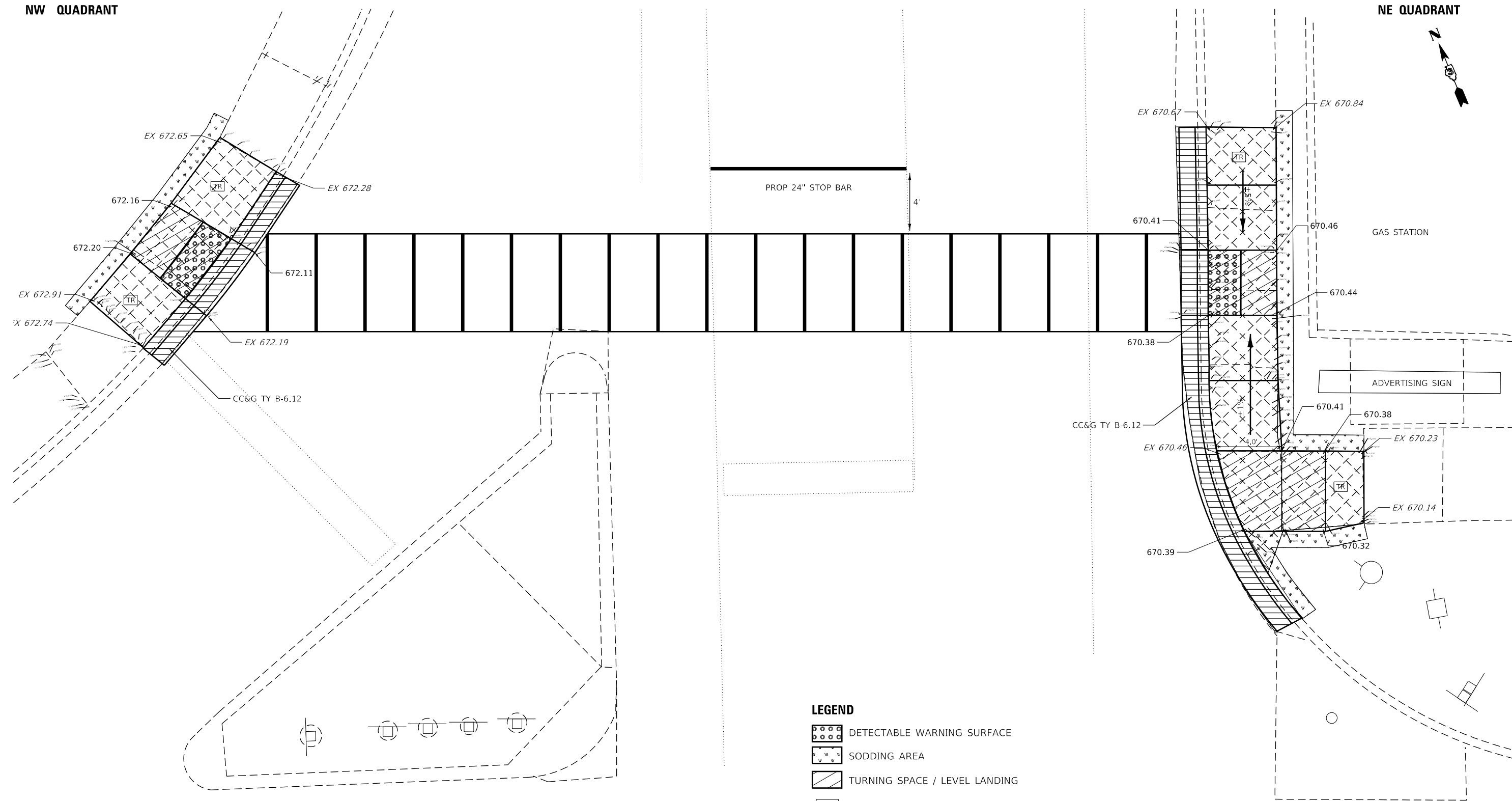
**IL 54 (SEMINARY AVE) & US 45  
ADA DETAILS**





SCALE: \_\_\_\_\_ SHEET \_\_\_\_ OF \_\_\_\_ SHEETS STA. \_\_\_\_\_ TO STA. \_\_\_\_\_

F.A.S. RTE.	SECTION	COUNTY	TOTAL SHEETS	SHEET NO.
338	(34)RS-6,SW & (35)RS-4,SW	IROQUOIS	20	15
CONTRACT NO. 66K51				
ILLINOIS FED. AID PROJECT				

**PROPOSED  
NW QUADRANT**

**PROPOSED  
NE QUADRANT**



- LEGEND**
-  DETECTABLE WARNING SURFACE
  -  SODDING AREA
  -  TURNING SPACE / LEVEL LANDING
  -  TRANSITION ZONE / PANEL



**SCALE IN FEET**

- NOTES:**
- 1) ALL CROSS-SLOPES IN THE DIRECTION OF SIDEWALK SHALL NOT EXCEED 1.5% (PREFERRED) OR 2.00% (ABSOLUTE MAX)
  - 2) LANDING & TURNING AREAS SHALL NOT EXCEED 1.5% (PREF) OR 2.00% (ABSOLUTE MAX) IN ANY DIRECTION

USER NAME = pletschr	DESIGNED - _____	REVISED - _____
	DRAWN - _____	REVISED - _____
PLOT SCALE = 6,0000' / in.	CHECKED - _____	REVISED - _____
PLOT DATE = 5/6/2020	DATE - _____	REVISED - _____

**STATE OF ILLINOIS  
DEPARTMENT OF TRANSPORTATION**

**IL 54 (SEMINARY AVE) & US 45  
ADA DETAILS**

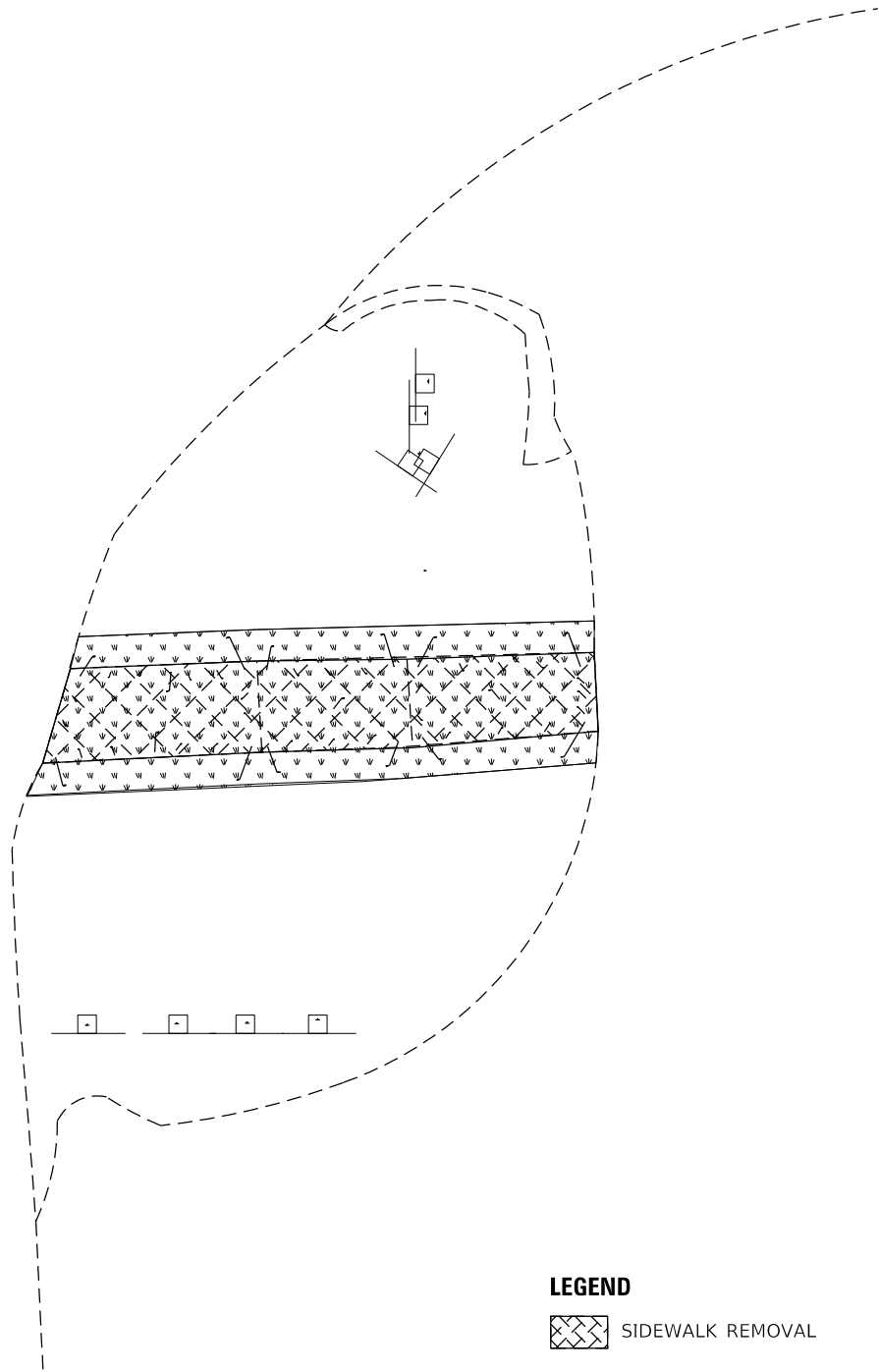
SCALE: \_\_\_\_\_ SHEET \_\_\_\_\_ OF \_\_\_\_\_ SHEETS STA. \_\_\_\_\_ TO STA. \_\_\_\_\_

F.A.S. RTE.	SECTION	COUNTY	TOTAL SHEETS	SHEET NO.
338	(34)RS-6,5W & (35)RS-4,5W	IROQUOIS	20	16
CONTRACT NO. 66K51				
ILLINOIS FED. AID PROJECT				

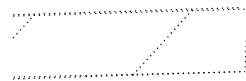
MODEL: Default  
 FILE: \\nas0101.pwd.state.il.us\pub\baronm\ada\illinois\pwr\DOT\Documents\DOT\_Offices\Illin\ct 3\Projects\0366K51\CADD\0366K51-ctr-ada.dgn



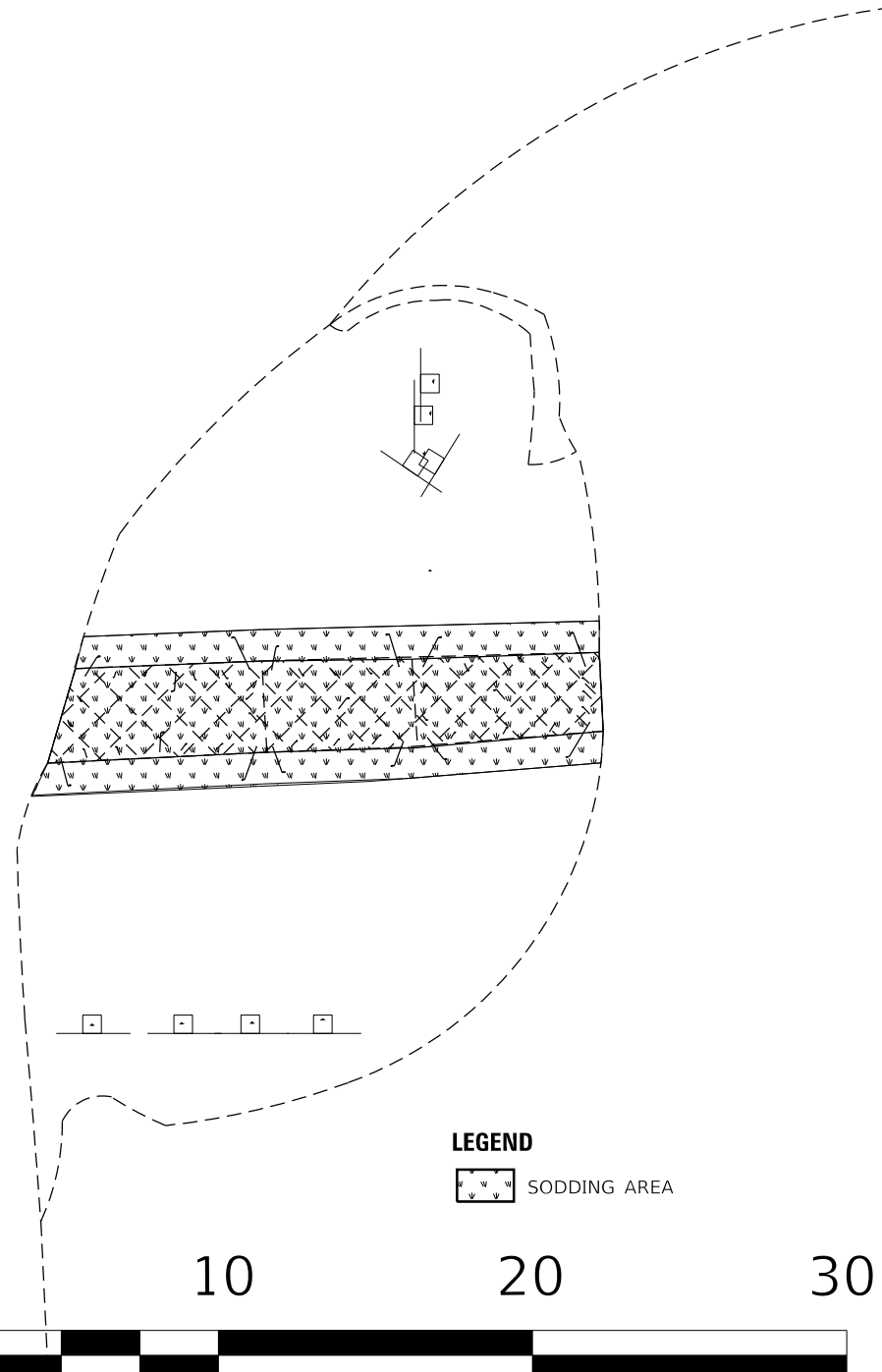
**EXISTING CONDITIONS  
SE QUADRANT**



**LEGEND**  
 SIDEWALK REMOVAL



**PROPOSED  
SE QUADRANT**



**LEGEND**  
 SODDING AREA

0 10 20 30



**SCALE IN FEET**

MODEL: Default  
 FILE: \\nrcs-pub\pub\rooms\dat\illinois\pwr\DOT\Documents\DOT\_Offices\Dir\trct\_3\Project\0366K51\CADD\0366K51-1-17-20\4.dgn

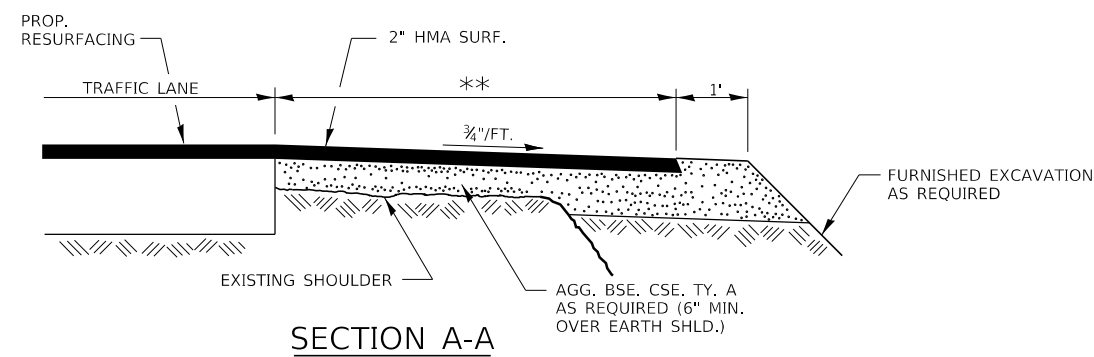
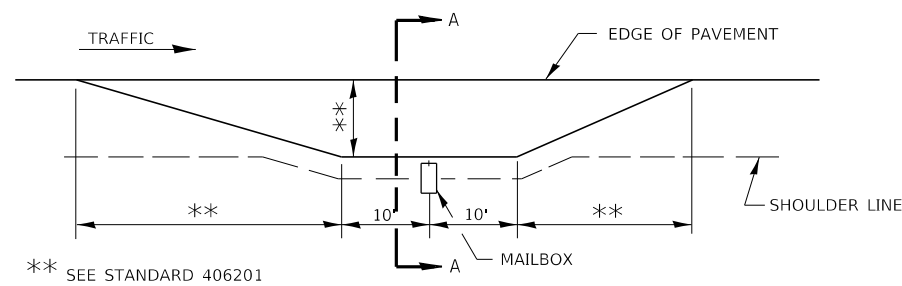
USER NAME = pletschr	DESIGNED - _____	REVISED - _____
	DRAWN - _____	REVISED - _____
PLOT SCALE = 6,0000' / in.	CHECKED - _____	REVISED - _____
PLOT DATE = 5/6/2020	DATE - _____	REVISED - _____

**STATE OF ILLINOIS  
DEPARTMENT OF TRANSPORTATION**

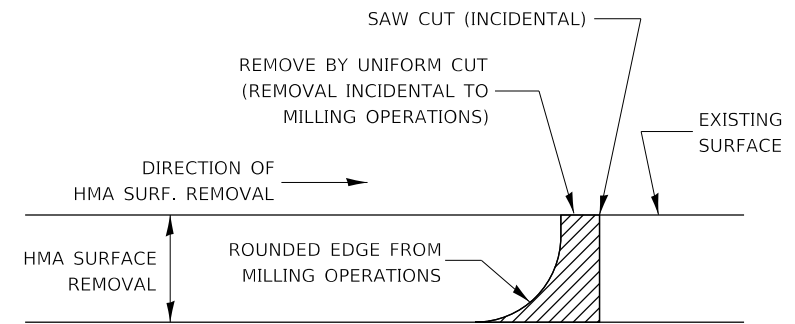
**IL 54 (SEMINARY AVE) & US 45  
ADA DETAILS**

SCALE: \_\_\_\_\_ SHEET \_\_\_\_ OF \_\_\_\_ SHEETS STA. \_\_\_\_\_ TO STA. \_\_\_\_\_

F.A.S. RTE.	SECTION	COUNTY	TOTAL SHEETS	SHEET NO.
338	(34)RS-6,5W & (35)RS-4,5W	IROQUOIS	20	17
			CONTRACT NO. 66K51	
ILLINOIS FED. AID PROJECT				



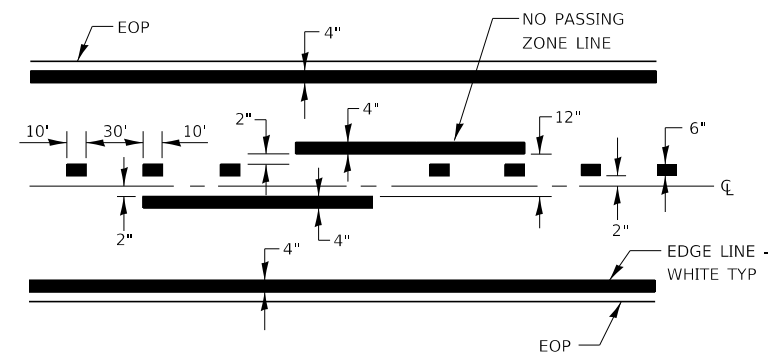
SECTION A-A



NOTE:

WHEN MILLING OPERATIONS PRODUCE A ROUNDED EDGE, THEN A SAW CUT SHALL BE USED TO MANUFACTURE A PERPENDICULAR EDGE AS SHOWN IN THE DETAIL. THE ENGINEER SHALL BE THE SOLE JUDGE CONCERNING THE USE OF THIS DETAIL.

**HMA DETAIL AT BUTT JOINTS**



CENTERLINE & NO PASSING ZONE LINES - YELLOW

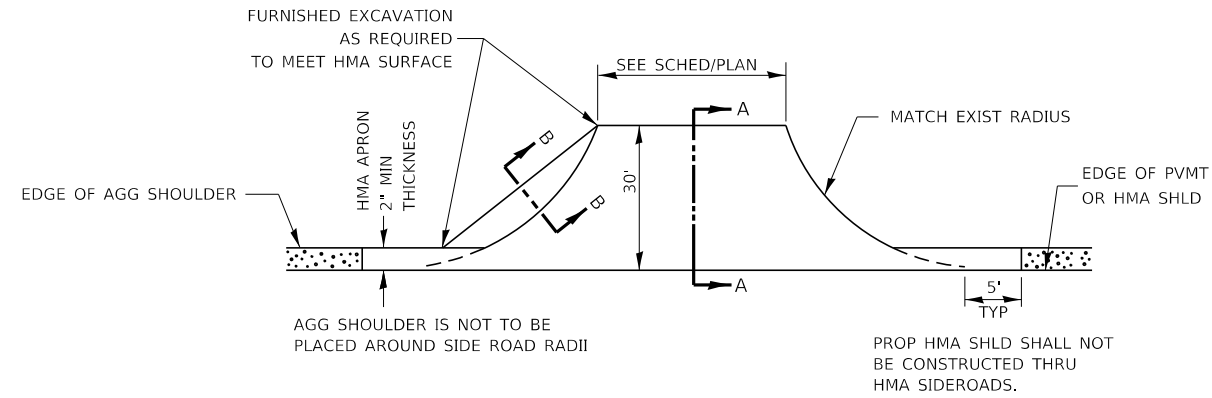
**PAVEMENT MARKING**

FILE NAME =	USER NAME = pletschr	DESIGNED - _____	REVISED - _____
pw:\planroom\dot\illinois.gov\PWIDOT\Documents\IDOT	offices\District 3\Projects\D366K51\CADData\D366K51-shldetail	DRAWN - _____	REVISED - _____
Default	PLOT SCALE = 100,0000' / in.	CHECKED - _____	REVISED - _____
	PLOT DATE = 5/6/2020	DATE - _____	REVISED - _____

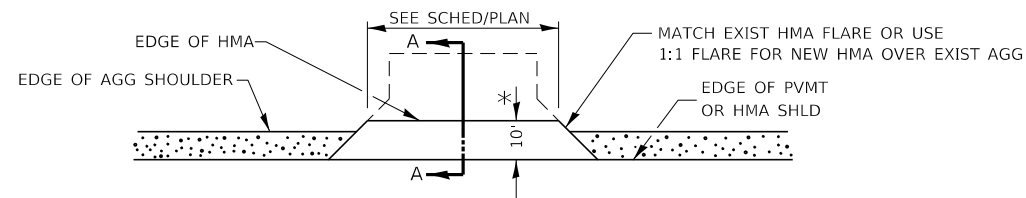
STATE OF ILLINOIS  
DEPARTMENT OF TRANSPORTATION

SCALE: _____		SHEET _____ OF _____ SHEETS		STA. _____ TO STA. _____	
--------------	--	-----------------------------	--	--------------------------	--

F.A.P. RTE.	SECTION	COUNTY	TOTAL SHEETS	SHEET NO.
338	(34)RS-6,SW & (35)RS-4,SW	IROQUOIS	20	18
CONTRACT NO. 66K51				
ILLINOIS			FED. AID PROJECT	



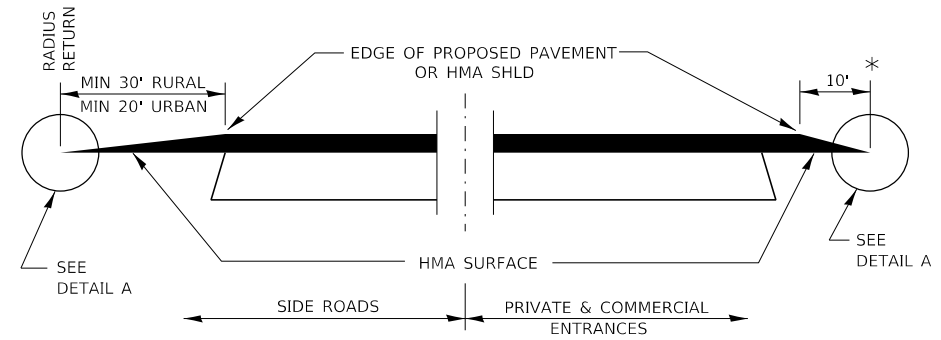
**PLAN AT SIDE ROADS**



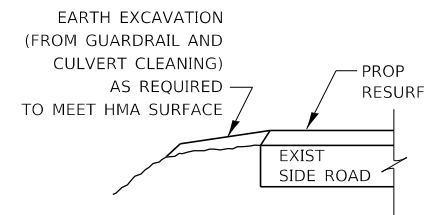
**PLAN AT PRIVATE & COMMERCIAL ENTRANCES**

(DO NOT RESURFACE FIELD ENTRANCES)

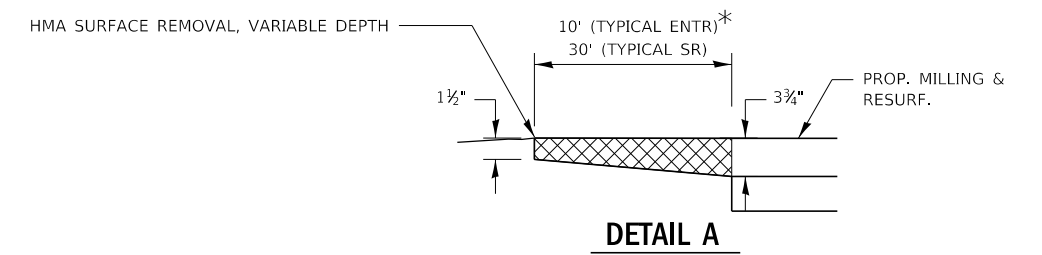
\* PROPOSED HMA RESURFACING AT PUBLIC EDUCATIONAL FACILITY ENTRANCES SHALL BE EXTENDED TO THE RIGHT-OF-WAY LIMITS.



**SECTION A-A  
DETAILS AT ENTRANCES & SIDE ROADS**



**SECTION B-B**



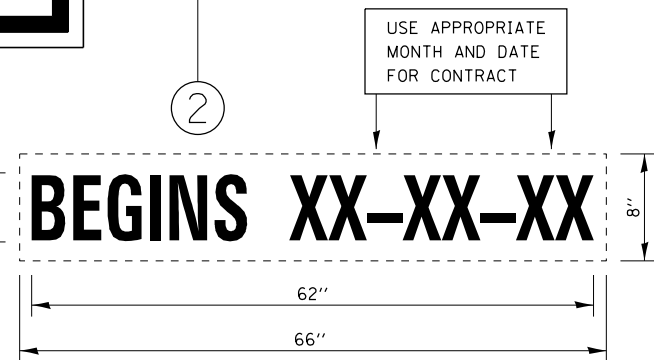
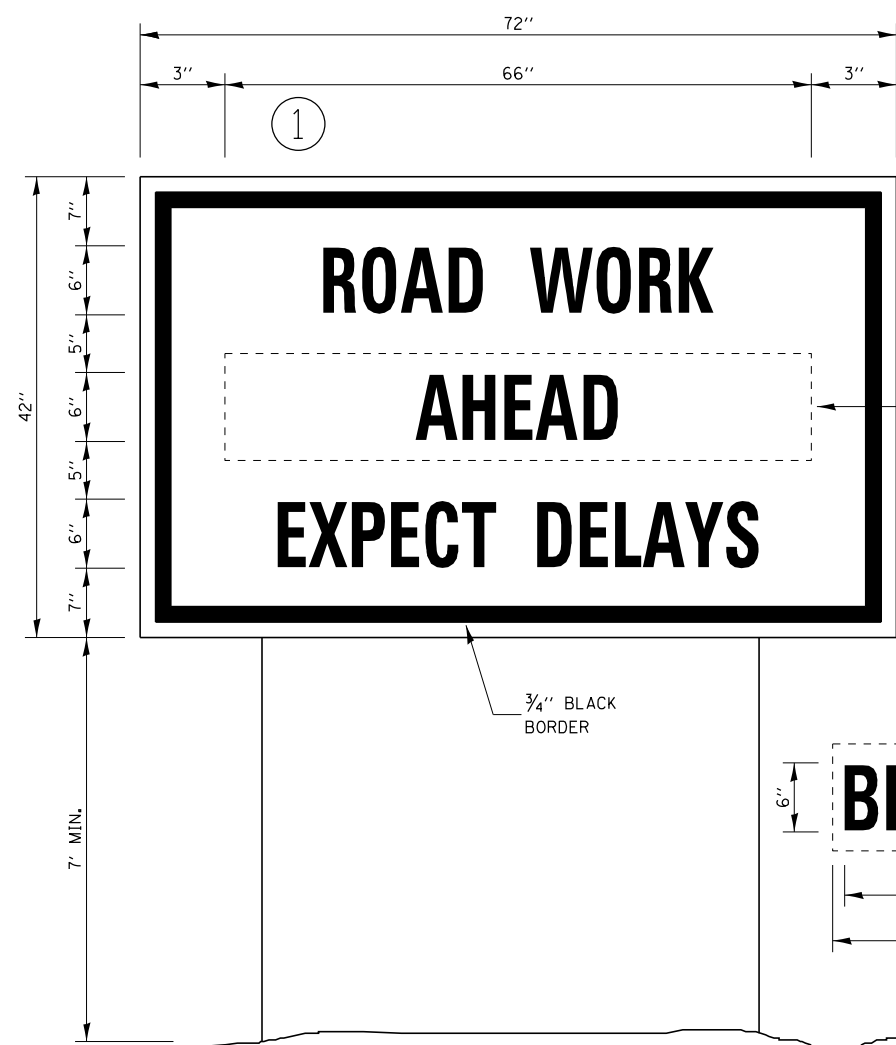
**DETAIL A**

FILE NAME =	USER NAME = pletschr	DESIGNED - _____	REVISED - _____
pw:\planroom\dot\illinois.gov\PWIDOT\Documents\IDOT	Office\District 3\Projects\D366K51\CADD\Detail\D366K51-shld\detail	DRAWN - _____	REVISED - _____
Default	PLOT SCALE = 100,0000' / in.	CHECKED - _____	REVISED - _____
	PLOT DATE = 5/6/2020	DATE - _____	REVISED - _____

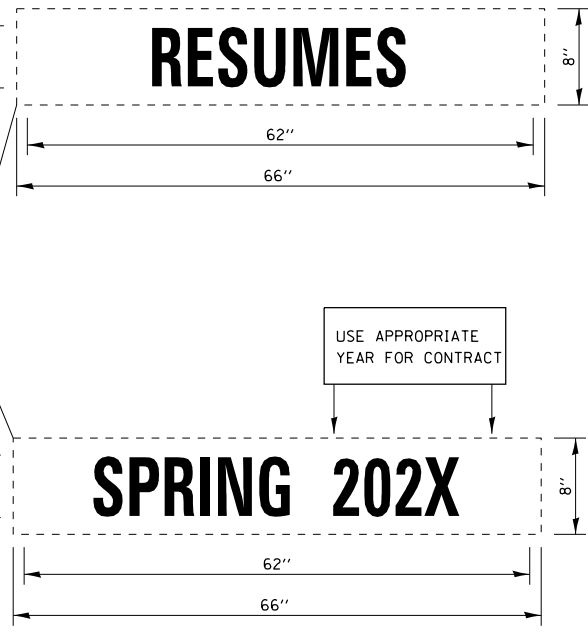
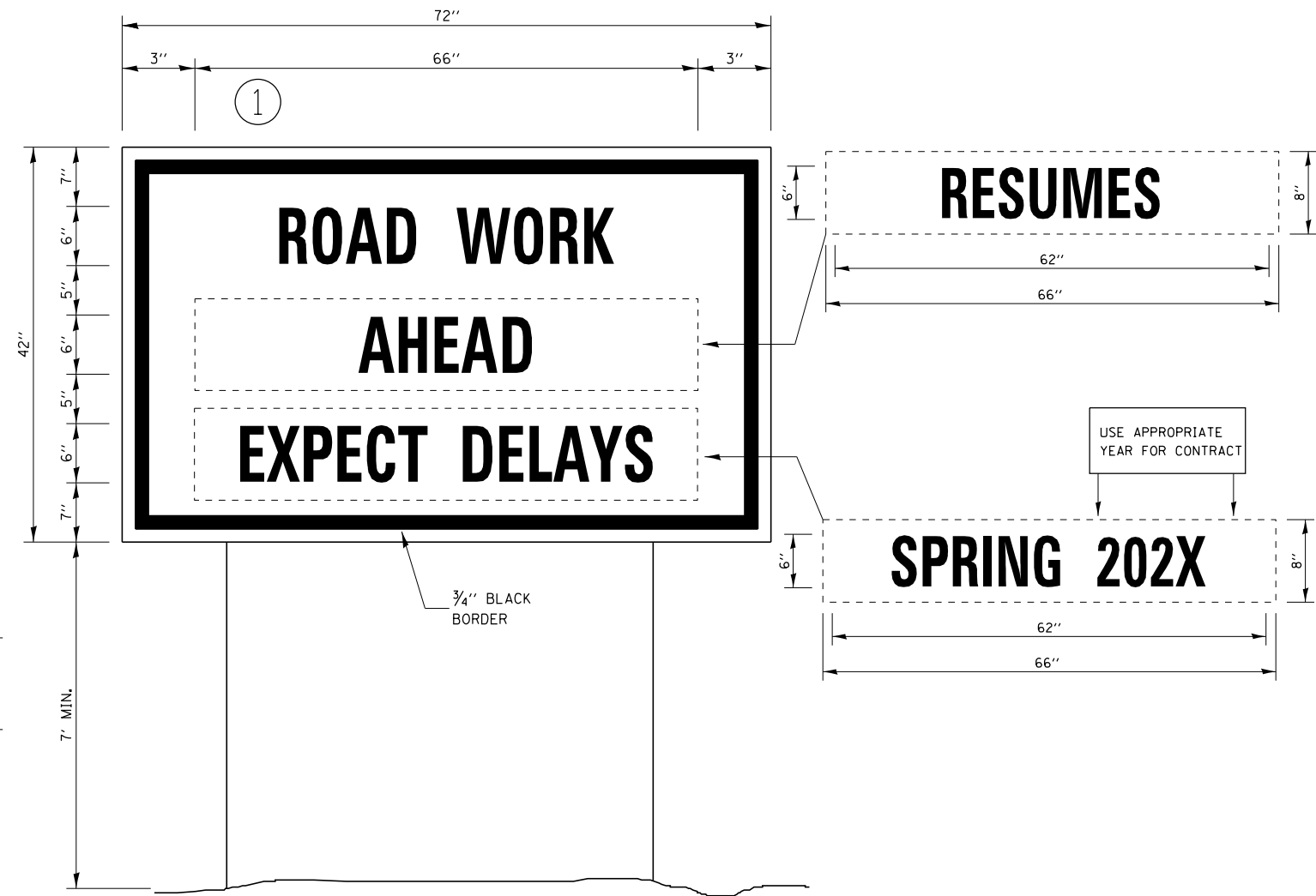
**STATE OF ILLINOIS  
DEPARTMENT OF TRANSPORTATION**

<b>DETAILS</b>			
SCALE: _____	SHEET _____	OF _____	SHEETS
STA. _____	TO STA. _____		

F.A.P. RTE.	SECTION	COUNTY	TOTAL SHEETS	SHEET NO.
338	(34)RS-6,SW & (35)RS-4,SW	IROQUOIS	20	19
CONTRACT NO. 66K51				
ILLINOIS FED. AID PROJECT				



**TEMPORARY INFORMATION SIGNING**



**WINTER SHUT DOWN SIGNING**

**NOTES:**

1. USE 6" D BLACK LETTERING ON FLOURESENT ORANGE BACKGROUND.
2. ERECT SIGNS AT LOCATIONS IN ADVANCE OF THE "ROAD CONSTRUCTION AHEAD" SIGNS AS DIRECTED BY THE ENGINEER.
3. ERECT SIGN ① WITH INSTALLED PANEL ② A MINIMUM OF ONE WEEK PRIOR TO THE START OF THE LANE CLOSURE.
4. REMOVE PANEL ② ON THAT DATE.
5. SEE SPECIAL PROVISION "TEMPORARY INFORMATION SIGNING" FOR ADDITIONAL INFORMATION.
6. WILL BE PAID FOR PER SQ FT AS "TEMPORARY INFORMATION SIGNING". EACH SIGN = 21 SQ FT AND THE DATE PANEL ② WILL NOT BE MEASURED SEPARATELY FOR PAYMENT.

FILE NAME =	USER NAME = pletschr	DESIGNED - _____	REVISED - _____
Default		CHECKED - _____	REVISED - _____
	PLOT SCALE = 100,0000' / in.	DATE - _____	REVISED - _____
	PLOT DATE = 5/6/2020		

STATE OF ILLINOIS  
DEPARTMENT OF TRANSPORTATION

DETAILS			
SCALE: _____	SHEET _____	OF _____	SHEETS
STA. _____	TO STA. _____		

F.A.P. RTE.	SECTION	COUNTY	TOTAL SHEETS	SHEET NO.
338	(34)RS-6,SW & (35)RS-4,SW	IROQUOIS	20	20
CONTRACT NO. 66K51				
ILLINOIS FED. AID PROJECT				