

INDEX OF SHEETS

FOR INDEX OF SHEETS, SEE SHEET NO. 2

PROJECT LOCATED IN THE CITY OF CHICAGO

DAN RYAN EXPRESSWAY:	ADT (2020)	DESIGN SPEED	POSTED SPEED
SB I-94 (DAN RYAN)	140,500	60 MPH	55 MPH
SB I-57	69,390	60 MPH	55 MPH
SB 95TH STREET EXIT RAMP	11,900	45 MPH	40 MPH
NB I-94 (DAN RYAN)	151,800	60 MPH	55 MPH
NB 95TH STREET ENTRANCE RAMP	10,500	45 MPH	40 MPH

DESCRIPTION OF PROJECT

LANDSCAPING AND IRRIGATION OF GATEWAYS AND CORNER GARDENS; CONSTRUCTION OF HMLT SERVICE PADS WITH MINI RETAINING WALLS LOCATED WITHIN THE PROJECT LIMITS.

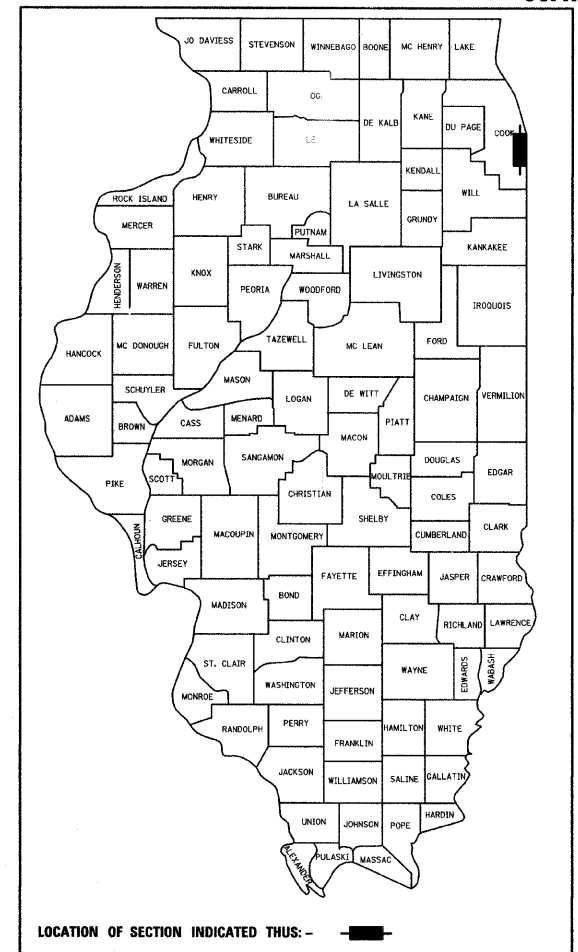
STATE OF ILLINOIS
DEPARTMENT OF TRANSPORTATION
DIVISION OF HIGHWAYS

PROPOSED HIGHWAY PLANS

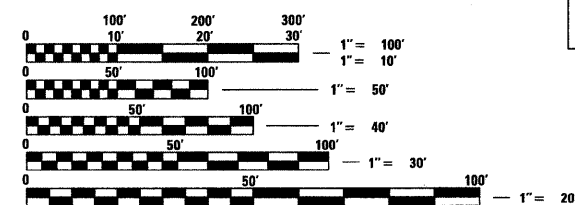
F.A.I. ROUTE 94 (DAN RYAN EXPRESSWAY)
SECTION 2005-068 LS
GATEWAYS AND CORNER GARDENS
NE, SE, NW & SW QUADRANTS AT 95TH STREET
~~PROJECT.~~

COOK COUNTY
C-91-104-06
R. 14 E.

F.A.I. RTE.	SECTION	COUNTY	TOTAL SHEETS	SHEET NO.
94	2005-068 LS	COOK	58	1
FED. ROAD DIST. NO.	ILLINOIS	FED. AID PROJECT		
D-91-104-06				60A74



LOCATION OF SECTION INDICATED THUS: -



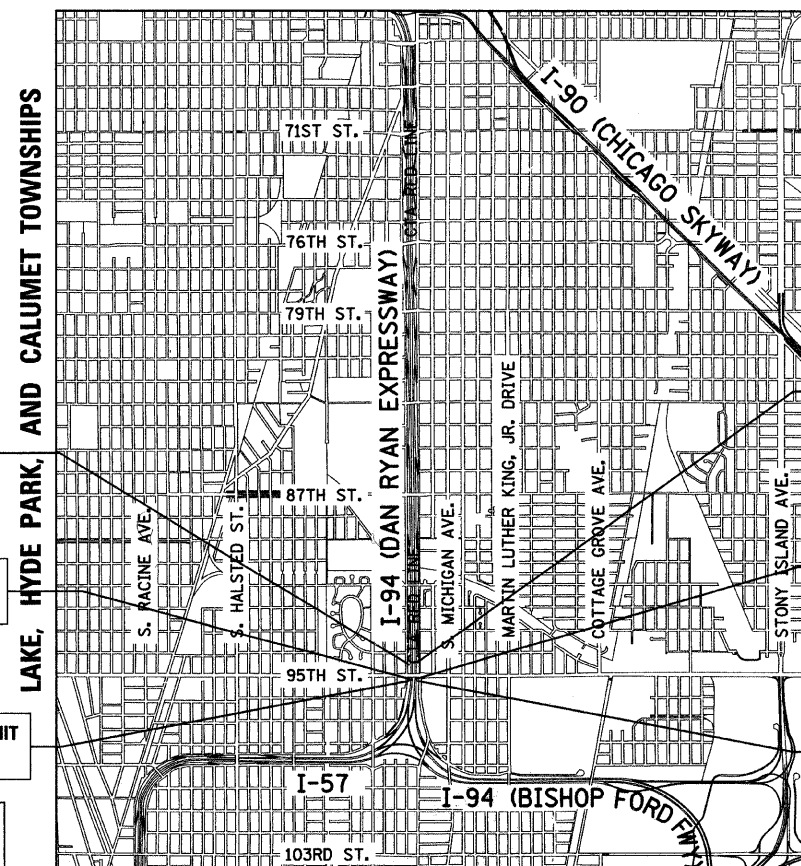
FULL SIZE PLANS HAVE BEEN PREPARED USING STANDARD ENGINEERING SCALES; REDUCED SIZED PLANS WILL NOT CONFORM TO STANDARD SCALES. IN MAKING MEASUREMENTS ON REDUCED PLANS, THE ABOVE SCALES MAY BE USED

DIGGER:
CHICAGO UTILITY ALERT NETWORK
(312) 744-7000

CTA CONTACT:
DAVID HEARD
MANAGER, CONSTRUCTION MANAGEMENT OVERSIGHT
(312) 681-3862

CONTRACT NO. 60A74

DISTRICT ONE DESIGN / PROJECT MANAGER:
BRIAN KUTTAB (847) 705 - 4431



F.A.I. 94 (RYAN) PROJECT LIMIT
STA. 1214 + 94.62 (SB I-94)

STA. 155 + 73.51 (SB I-57) =
STA. 1205 + 00.00 (SB I-94)

F.A.I. 94 (RYAN) PROJECT LIMIT
STA. 153 + 08.86 (SB I-57)

F.A.I. 94 (RYAN) PROJECT LIMIT
STA. 2212 + 99.23 (NB I-94)

STA. 258 + 32.25 (NB I-57) =
STA. 2203 + 00.00 (NB I-94)

F.A.I. 94 (RYAN) PROJECT LIMIT
STA. 257 + 75.55 (NB I-57)

LOCATION MAP

GROSS LENGTH OF PROJECT = 2,315.20 FT. = 0.44 MI.
NET LENGTH OF PROJECT = 2,315.20 FT. = 0.44 MI.
MAP SCALE: 1" = 1/2 MILE

STATE OF ILLINOIS
DEPARTMENT OF TRANSPORTATION
DIVISION OF HIGHWAYS

SUBMITTED JUNE 18, 2008

Diana M. O'Keefe
DEPUTY DIRECTOR OF HIGHWAYS, REGION ENGINEER

August 15, 2008
Eric E. Harrel
SENIOR ENGINEER OF DESIGN AND ENVIRONMENT

August 15, 2008
Christine M. Reed
DIRECTOR OF HIGHWAYS, CHIEF ENGINEER

CONTRACT 22C



Signed Dean A. Kiesling
Date JUNE 18, 2008



Signed Ernest C. Wong
Date JUNE 13, 2008
For Landscape Drawings 6, 7, 22-27, 34-36, 42

TYLIN INTERNATIONAL
PRINTED BY THE AUTHORITY OF THE STATE OF ILLINOIS