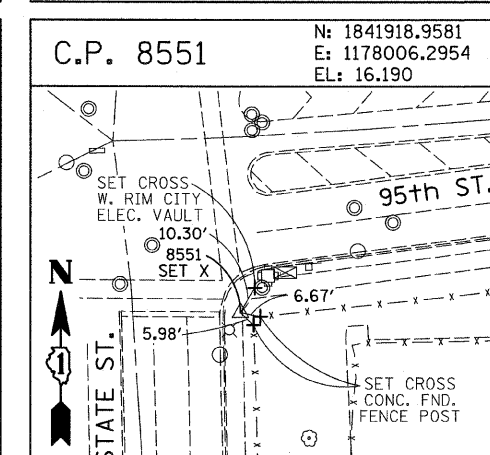
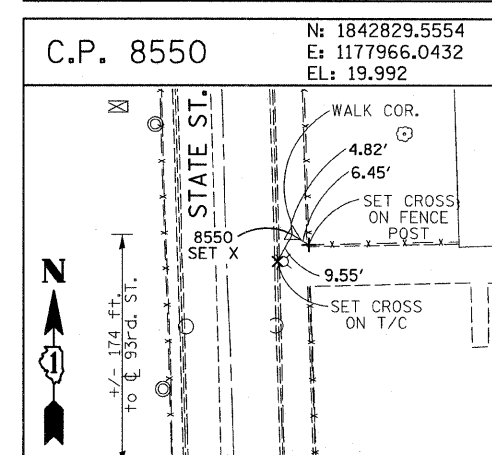
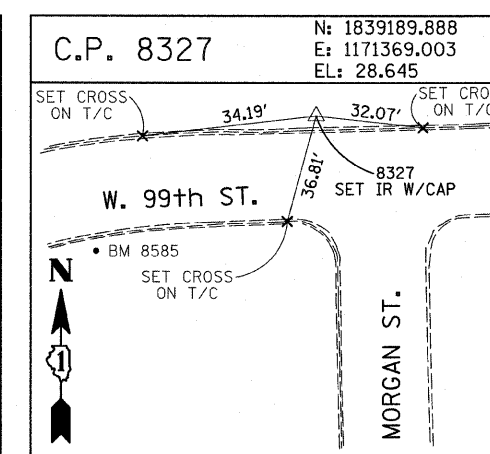
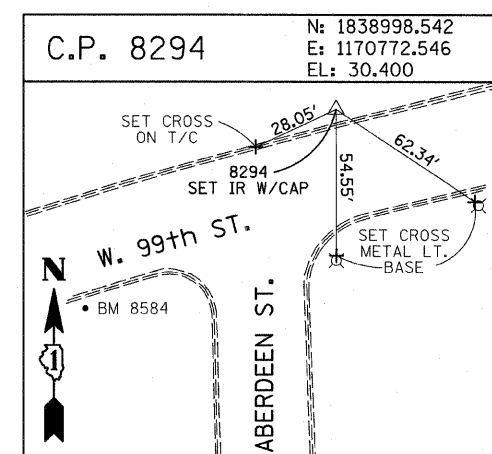
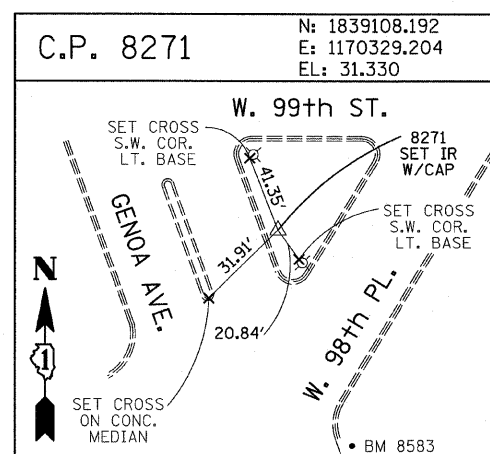
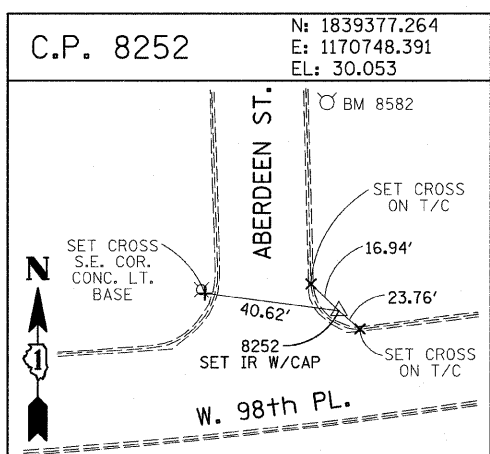
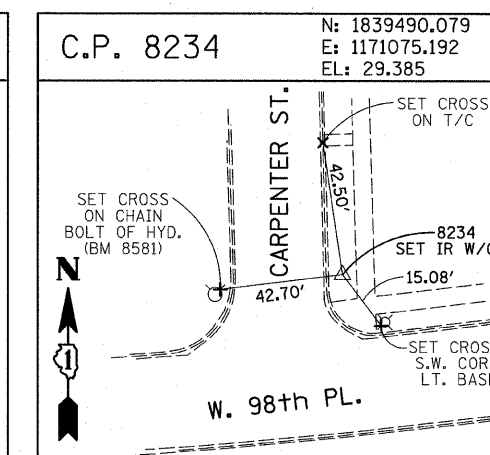
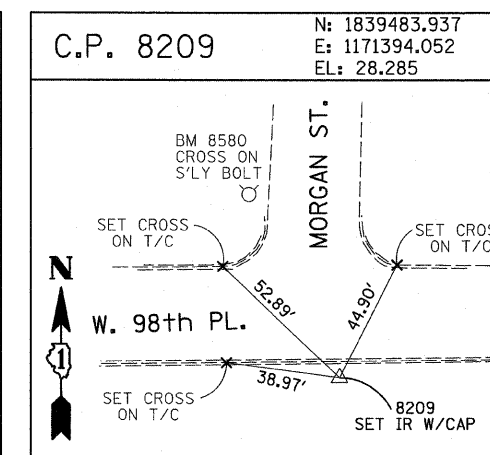
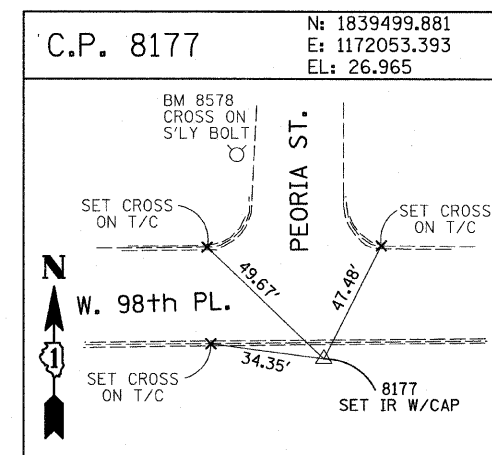
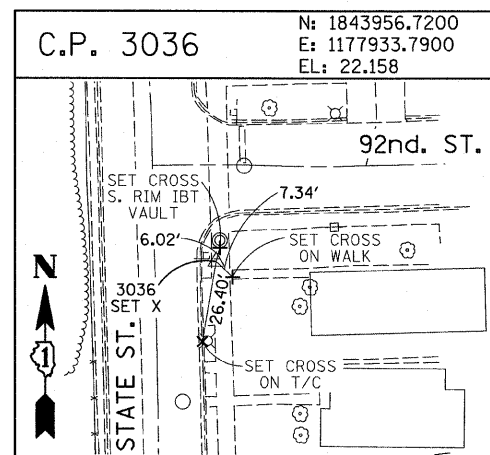
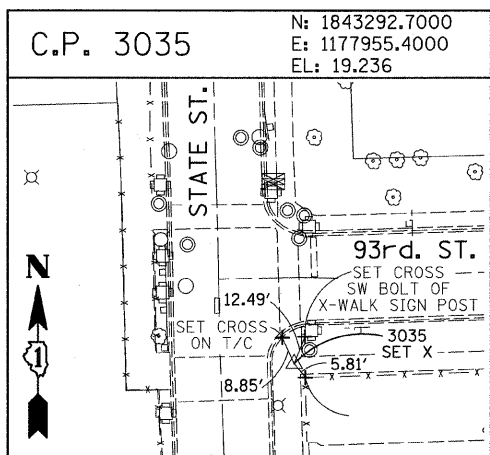
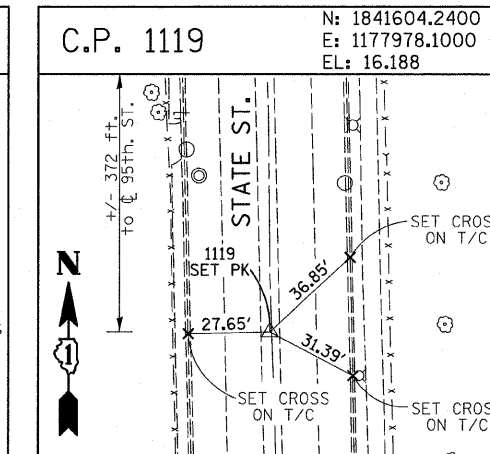
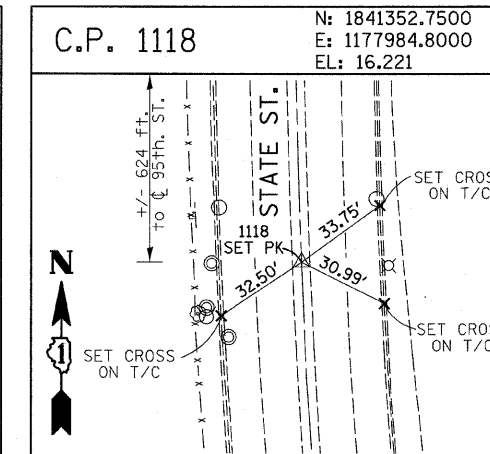
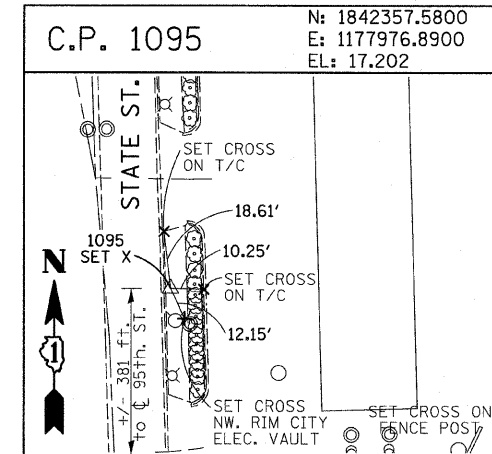
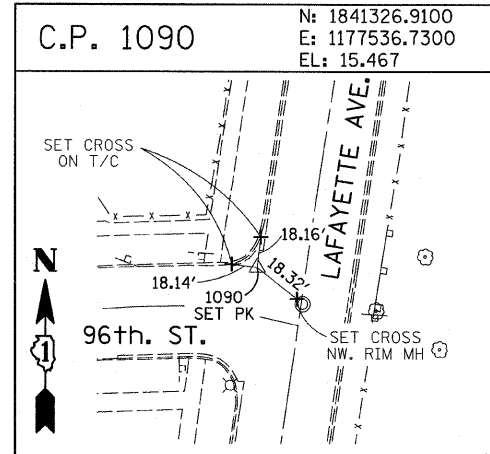
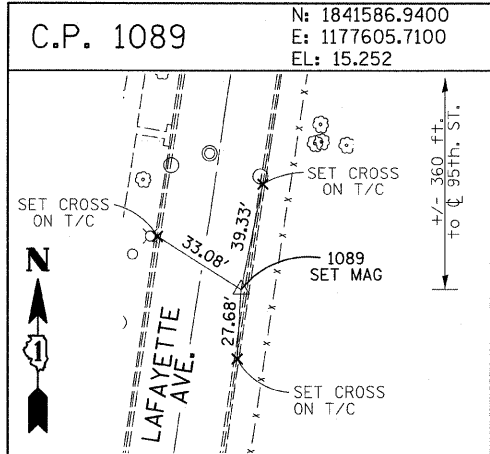


F.A.I. RTE.	SECTION	COUNTY	TOTAL SHEETS	SHEET NO.
94	2005-068 LS	COOK	58	17
153+08 (SB 1-37)		214+98 (SB 1-94)		
STA. 237+76 (NB 1-37)		223+00 (NB 1-94)		
FED. ROAD DIST. NO.		ILLINOIS FED. AID PROJECT		

60A74



American Surveying Consultants, P.C.
 1877 Pines Bl. Chicago, IL 60614 630.551.1100

REVISIONS	
NAME	DATE

ILLINOIS DEPARTMENT OF TRANSPORTATION
 F.A.I. 94 (DAN RYAN EXPRESSWAY)
 SURVEY TIES FOR CONTROL POINTS
 SHEET 6 OF 7

SCALE: 1"=30'
 DATE: JUNE 20, 2008
 DRAWN BY: GSP
 CHECKED BY: MMW

6/20/2008 10:25:31 AM