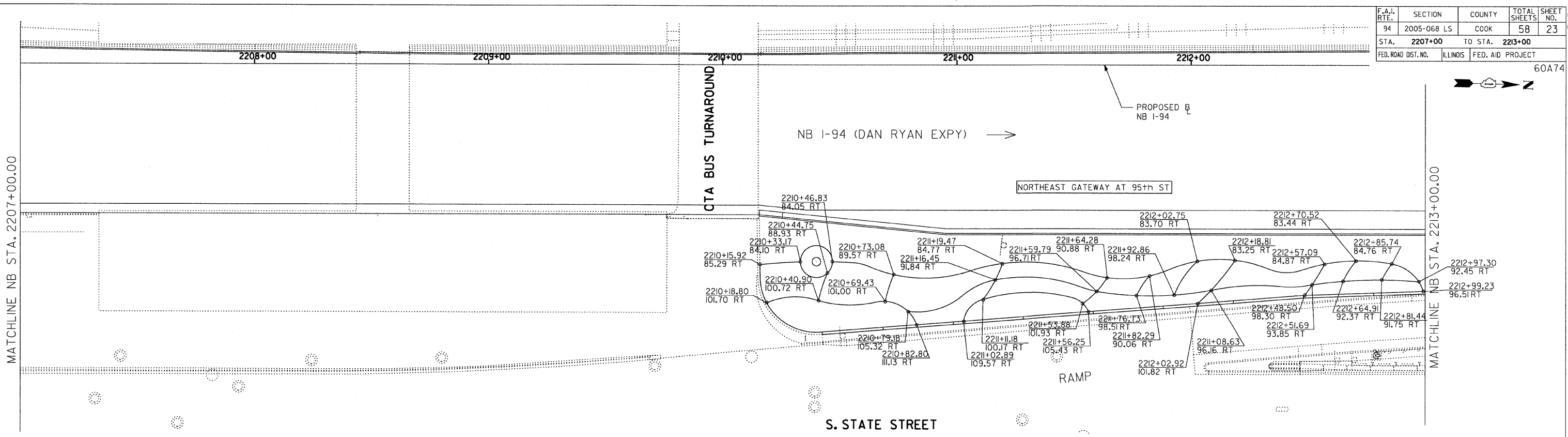
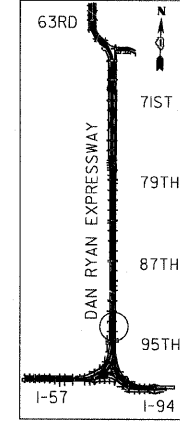


F.A.I. RTE.	SECTION	COUNTY	TOTAL SHEETS	SHEET NO.
94	2005-068 LS	COOK	58	23
STA. 2207+00	TO STA. 2213+00			
FED. ROAD DIST. NO.	ILLINOIS	FED. AID PROJECT		
		60A74		

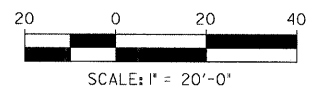


MATCHLINE NB STA. 2207+00.00

MATCHLINE NB STA. 2213+00.00



LOCATION MAP



SITE DESIGN GROUP

TYLIN INTERNATIONAL

NOTE: THE LOCATION OF ALL PLANT MATERIAL SHALL BE STAKED BY THE CONTRACTOR FOR APPROVAL BY THE ENGINEER IN FIELD, PRIOR TO INSTALLATION. INDIVIDUAL TREES SHALL BE STAKED WITH IDENTITIES WRITTEN ON STAKES. SHRUB AND PERENNIAL BEDS SHALL BE OUTLINED WITH STAKES AND PAINTED LINES.

REVISIONS	
NAME	DATE

ILLINOIS DEPARTMENT OF TRANSPORTATION
 F.A.I. 94 (DAN RYAN EXPRESSWAY)
 95TH STREET GATEWAY LANDSCAPING AND IRRIGATION
 PLANTING BED LAYOUT PLANS
 NE QUADRANTS AT 95TH ST. - NB I-94

SCALE: 1"=20'
 DATE: JUNE 20, 2008

DRAWN BY: EM
 CHECKED BY: JO

\$DATE\$