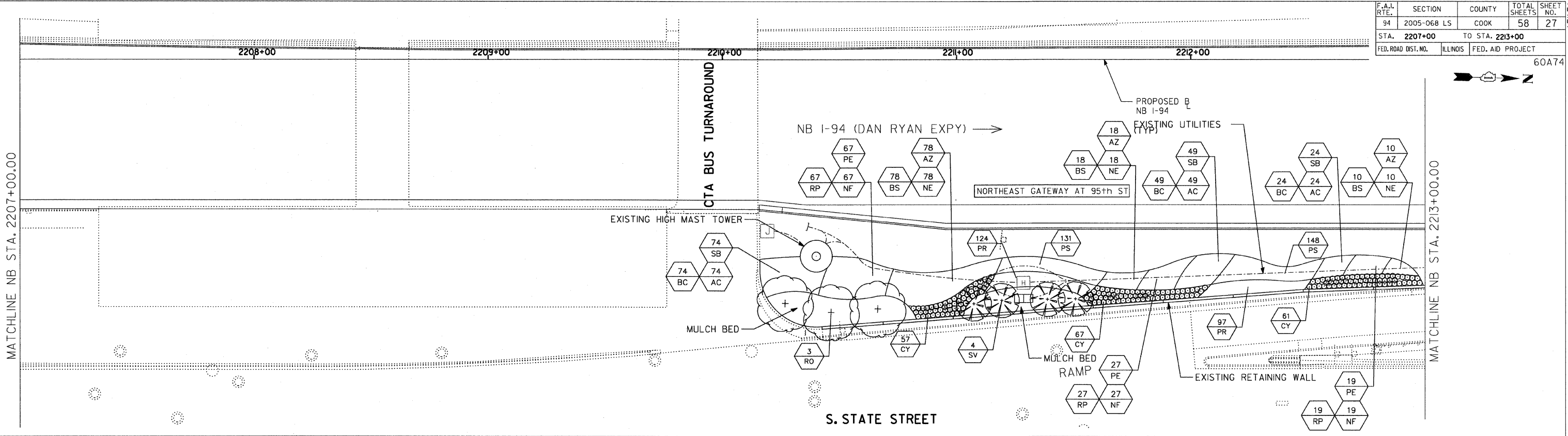


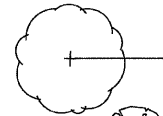

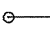

F.A.I. RTE.	SECTION	COUNTY	TOTAL SHEETS	SHEET NO.
94	2005-068 LS	COOK	58	27
STA. 2207+00		TO STA. 2213+00		
FED. ROAD DIST. NO.	ILLINOIS	FED. AID PROJECT		
		60A74		

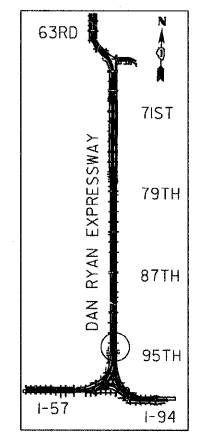


MATCHLINE NB STA. 2207+00.00

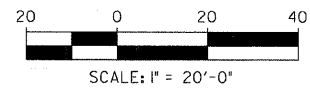
MATCHLINE NB STA. 2213+00.00

LEGEND:

-  SHADE TREE
-  ORNAMENTAL TREE
-  SHRUB
-  PERENNIALS/GRASSES



LOCATION MAP



SITE DESIGN GROUP

TYLIN INTERNATIONAL

REVISIONS		ILLINOIS DEPARTMENT OF TRANSPORTATION F.A.I. 94 (DAN RYAN EXPRESSWAY) 95TH STREET GATEWAY LANDSCAPING AND IRRIGATION LANDSCAPE PLANS NE QUADRANTS AT 95TH ST. - NB I-94
NAME	DATE	

SCALE: 1"=20'
DATE: JUNE 20, 2008

DRAWN BY: EM
CHECKED BY: JO