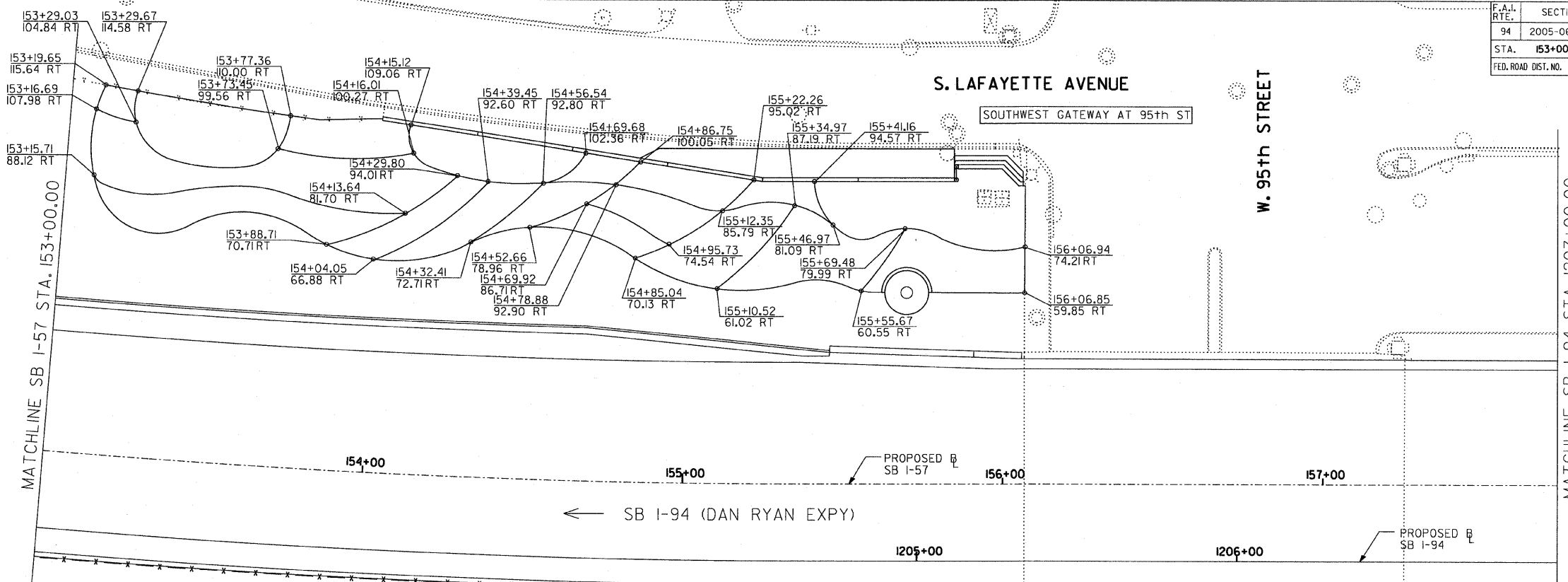


F.A.I. RTE.	SECTION	COUNTY	TOTAL SHEETS	SHEET NO.
94	2005-068 LS	COOK	58	34
STA. 153+00		TO STA. 1213+00		
FED. ROAD DIST. NO.		ILLINOIS	FED. AID PROJECT	

60A74



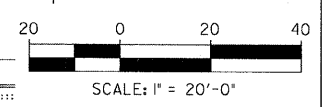
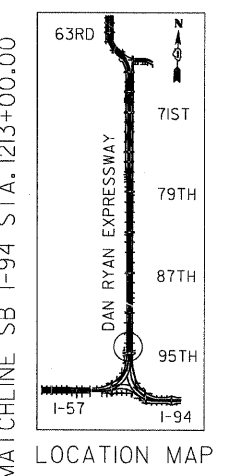
S. LAFAYETTE AVENUE

NORTHWEST GATEWAY AT 95th ST

95th STREET CTA STATION

CTA BUS TURNAROUND

← SB I-94 (DAN RYAN EXPY)



SITE DESIGN GROUP
TYLIN INTERNATIONAL

NOTE: THE LOCATION OF ALL PLANT MATERIAL SHALL BE STAKED BY THE CONTRACTOR FOR APPROVAL BY THE ENGINEER IN FIELD, PRIOR TO INSTALLATION. INDIVIDUAL TREES SHALL BE STAKED WITH IDENTITIES WRITTEN ON STAKES. SHRUB AND PERENNIAL BEDS SHALL BE OUTLINED WITH STAKES AND PAINTED LINES.

REVISIONS	
NAME	DATE

ILLINOIS DEPARTMENT OF TRANSPORTATION
F.A.I. 94 (DAN RYAN EXPRESSWAY)
95th STREET GATEWAY LANDSCAPING AND IRRIGATION
PLANTING BED LAYOUT PLANS
SW + NW QUADRANTS AT 95TH ST. - SB I-94
SCALE: 1"=20'
DATE: June 20, 2008
DRAWN BY: EM
CHECKED BY: JO