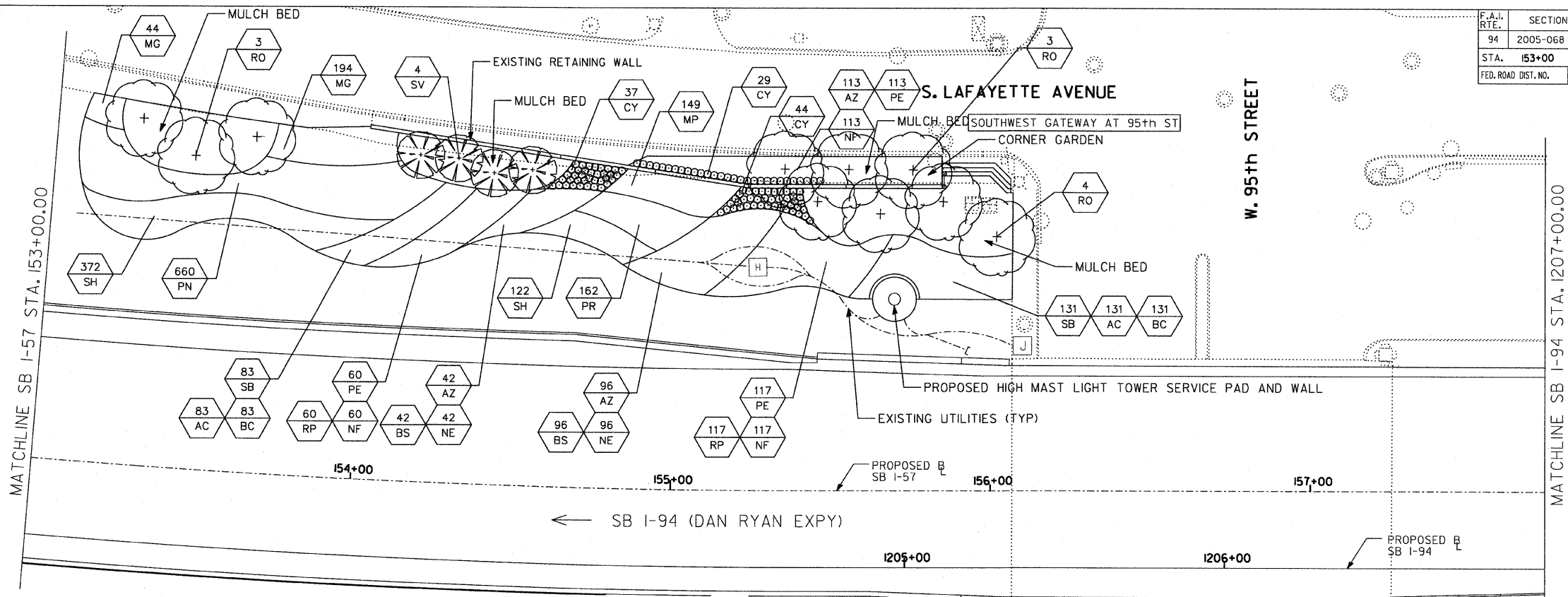
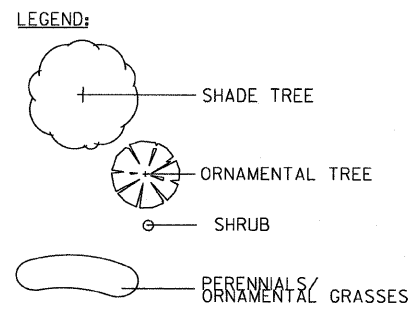


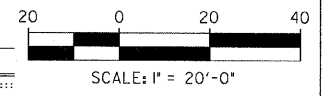
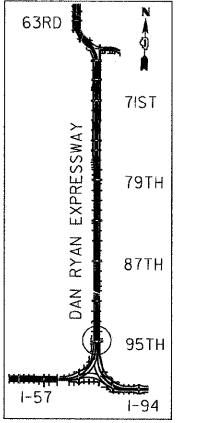
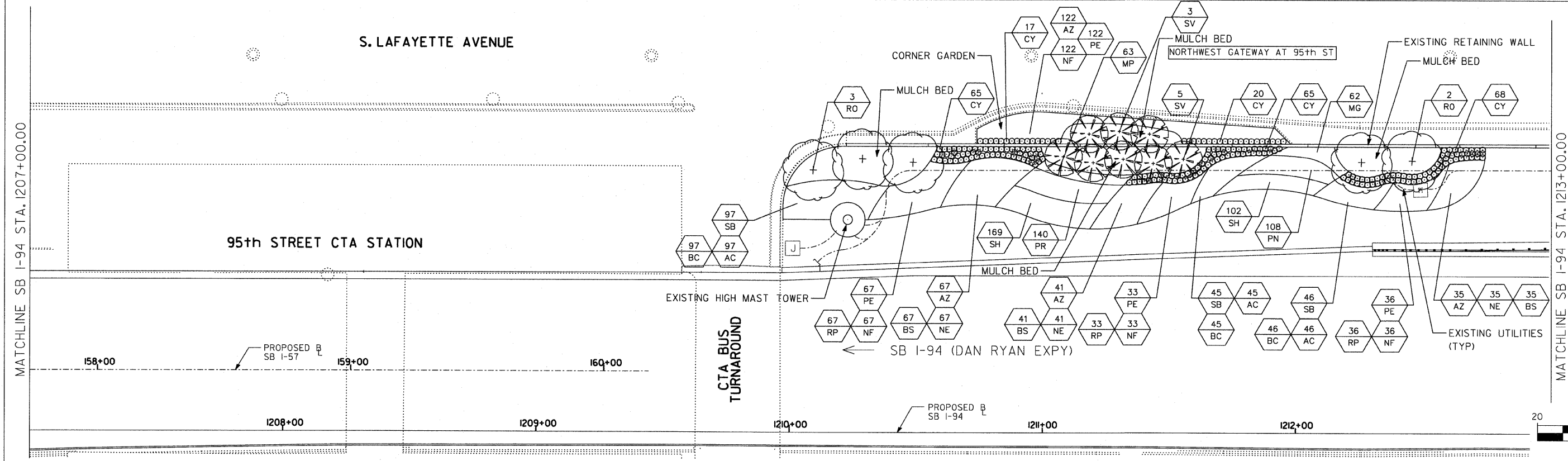
F.A.I. RTE.	SECTION	COUNTY	TOTAL SHEETS	SHEET NO.
94	2005-068 LS	COOK	58	36
STA. 153+00		TO STA. 1213+00		
FED. ROAD DIST. NO.		ILLINOIS	FED. AID PROJECT	

60A74



S. LAFAYETTE AVENUE

95th STREET CTA STATION



SITE DESIGN GROUP
TYLIN INTERNATIONAL

REVISIONS	
NAME	DATE

ILLINOIS DEPARTMENT OF TRANSPORTATION
 F.A.I. 94 (DAN RYAN EXPRESSWAY)
 95TH STREET GATEWAY LANDSCAPING AND IRRIGATION
 LANDSCAPE PLANS
 SW + NW QUADRANTS AT 95TH ST. - SB I-94
 SCALE: 1"=20'
 DATE: June 20, 2008
 DRAWN BY: EM
 CHECKED BY: JO