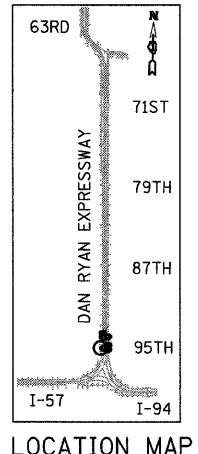
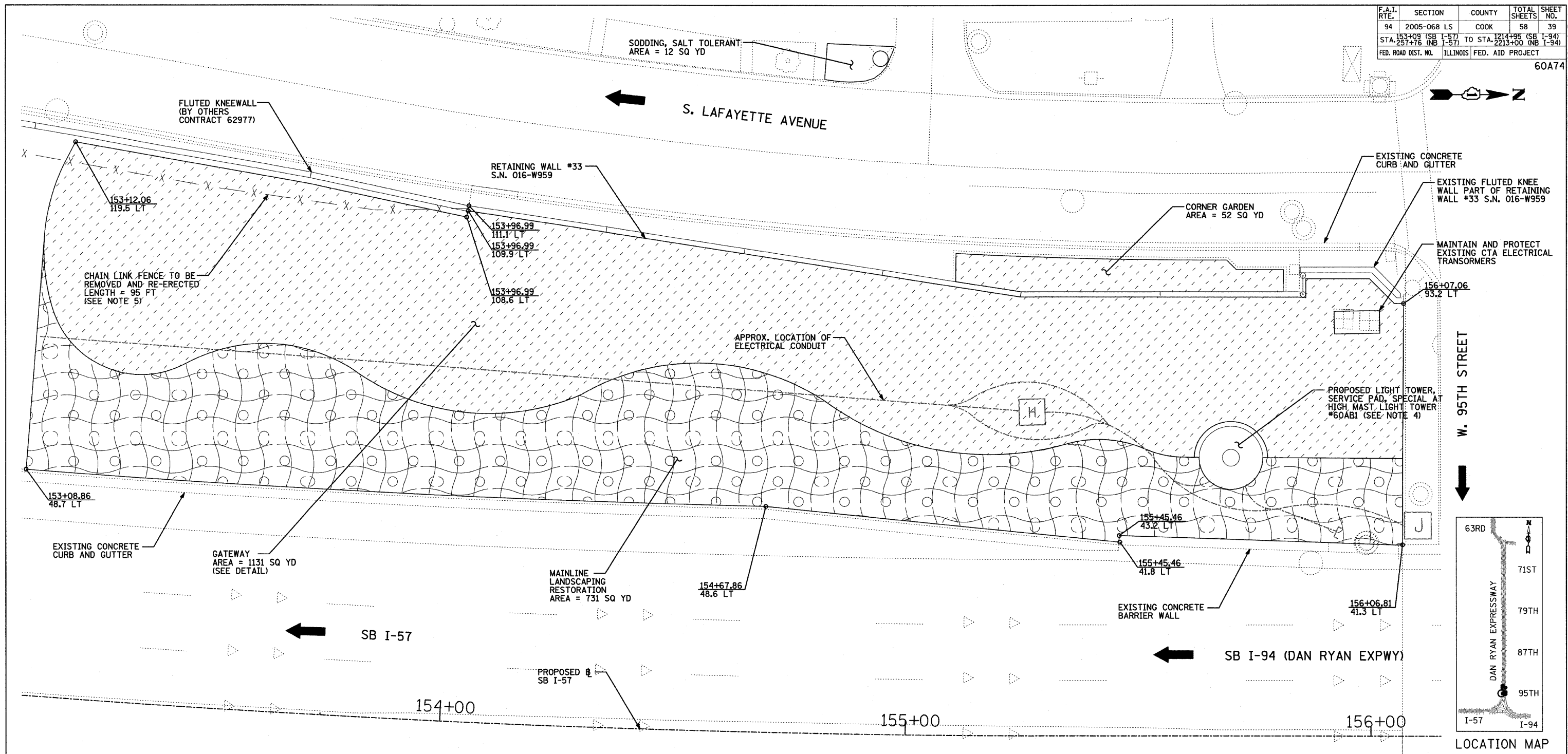


F.A.I. RTE.	SECTION	COUNTY	TOTAL SHEETS	SHEET NO.
94	2005-068 LS	COOK	58	39
STA. 153+08 (SB I-57) TO STA. 154+00 (SB I-57)		TO STA. 156+07.42 (SB I-94)		
STA. 257+76 (NB I-57)		TO STA. 2213+00 (NB I-94)		
FED. ROAD DIST. NO.	ILLINOIS FED. AID PROJECT		60A74	



LANDSCAPING GENERAL PLAN NOTES:

1. THE SEEDING DATES FOR BARE EARTH SEEDING OF MIXTURE CLASS 2A SHALL BE FROM APRIL 1 TO JUNE 1 AND FROM AUGUST 15 TO SEPTEMBER 30. ALL SEEDING NOT SOWN ACCORDING TO THE SPECIFIED SEASONAL DATE SHALL REQUIRE PRIOR APPROVAL FROM THE ENGINEER. FAILURE TO SECURE SUCH APPROVAL SHALL RESULT IN THE REJECTION OF THE SEEDING AND REPLACEMENT BY THE CONTRACTOR AS HIS/HER EXPENSE.
2. AREAS TO BE SEEDD BETWEEN NOVEMBER 1 AND APRIL 1 SHALL REQUIRE DORMANT SEEDING, WHICH SHALL BE INCLUDED IN THE COST OF SEEDING CLASS 2A.
3. LAYOUT OF LANDSCAPED AREAS WILL REQUIRE APPROVAL OF THE ENGINEER PRIOR TO SEEDING AND PLANTING.
4. QUANTITIES FOR TOPSOIL FURNISH AND PLACE, 12" AND COMPOST FURNISH AND PLACE, 6" HAVE BEEN PROVIDED FOR THE AREA AROUND THE HMLT SERVICE PAD. A RADIUS OF 20 FT FROM THE EDGE OF THE SERVICE PAD WAS USED TO CALCULATE THIS QUANTITY.
5. CHAIN LINK FENCE TO BE REMOVED AND RE-ERECTED SHALL BE RELOCATED TO THE WEST LIMIT OF THE GATEWAY AREA. THE FENCE SHALL START AT THE SOUTH END OF THE RETAINING WALL AND RE-CONNECT WITH THE EXISTING FENCE PAST THE SOUTH LIMIT OF THE GATEWAY. ANY ADDITIONAL FENCING REQUIRED TO CLOSE GAPS AT THE ENDS SHALL BE INCLUDED IN THE COST OF CHAIN LINK FENCE TO BE REMOVED AND RE-ERECTED. THE CHAIN LINK FENCE IS TO REMAIN UNTIL KNEE WALL CONTRACT 62977 BEGINS.

LEGEND:

- EROSION CONTROL BLANKET, SEEDING, CLASS 2A, NITROGEN, PHOSPHORUS, AND POTASSIUM FERTILIZER NUTRIENTS
- GATEWAY AREA (SEE LANDSCAPE PLANS)
- DIRECTION OF TRAFFIC

REVISIONS	
NAME	DATE

ILLINOIS DEPARTMENT OF TRANSPORTATION
F.A.I. 94 (DAN RYAN EXPRESSWAY)
MAINLINE LANDSCAPING RESTORATION
SW & NW QUADRANTS AT 95TH ST - SB I-57
STA. 153+08.86 TO STA. 156+07.42
SHEET 1 OF 3

SCALE: 1"=10'-0"
DATE: JUNE 20, 2008
DRAWN BY: JDF
CHECKED BY: JPM

TYLIN INTERNATIONAL

6/20/2008 10:27:07 AM