

SEQUENCE OF OPERATION

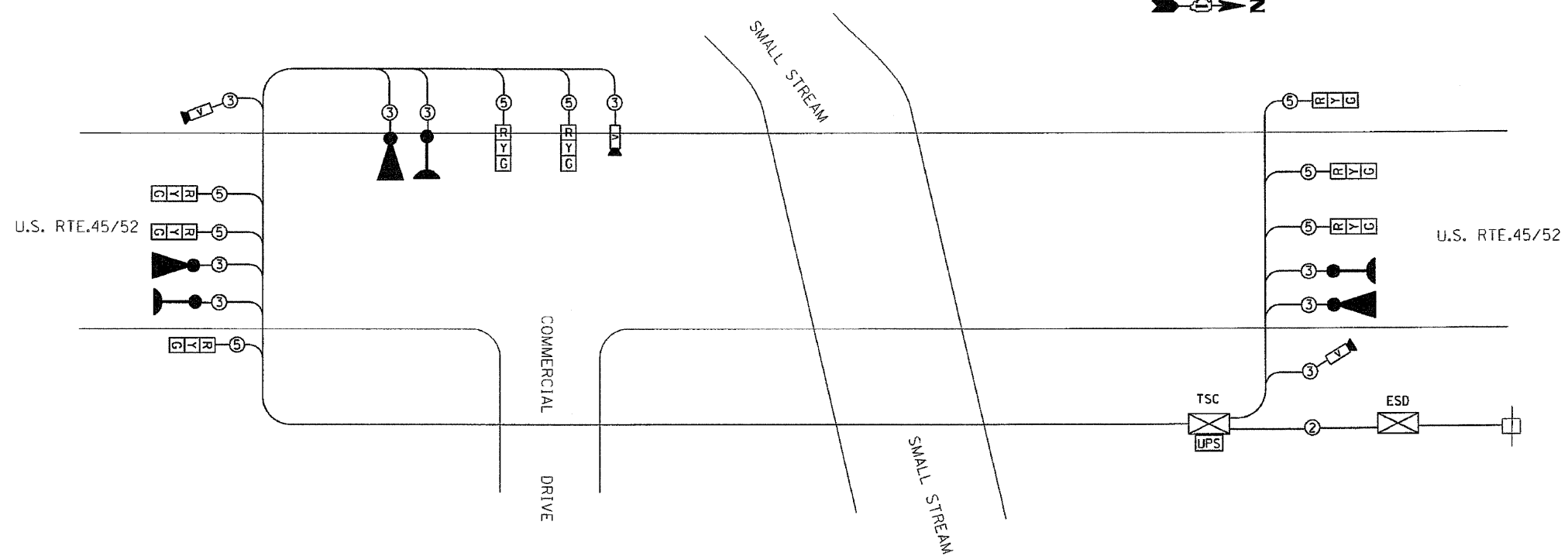
MOVEMENT	U.S. RTE. 45/52		U.S. RTE. 45/52		U.S. RTE. 45/52		F	L	A
	COMMERCIAL	DRIVE	COMMERCIAL	DRIVE	COMMERCIAL	DRIVE			
PHASE	2		6		8				
INTERVAL	1	2A	2B	3	4A	4B	5	6A	6B
CHANGE TO		6, 8			2, 8			2, 6	
U.S. RTE.45/52 SIGNAL (NORTH BOUND)	G	Y	R	R	R	R	R	R	R
U.S. RTE.45/52 SIGNAL (SOUTH BOUND)	R	R	R	G	Y	R	R	R	R
COMMERCIAL DRIVE SIGNAL (NORTH BOUND & SOUTH BOUND)	R	R	R	R	R	R	G	Y	R

TEMPORARY TRAFFIC SIGNAL BILL OF MATERIALS

DESCRIPTION	UNIT	QUANTITY
TEMPORARY BRIDGE TRAFFIC SIGNAL INSTALLATION	EACH	1

TEMPORARY CABLE DIAGRAM LEGEND

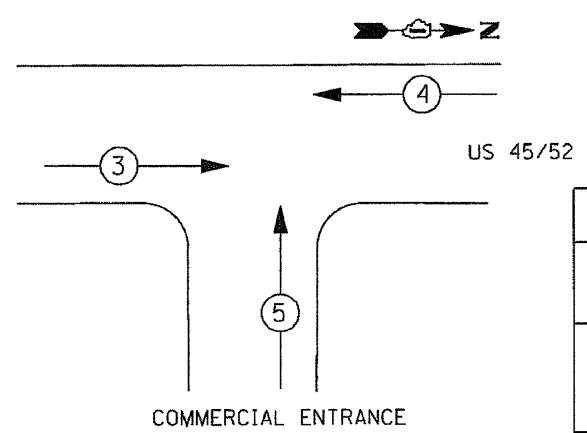
- PROPOSED
- [R] TEMPORARY TRAFFIC SIGNAL SECTION OR PEDESTRIAN SIGNAL SECTION 12" (300 mm)
 - TSC [X] TEMPORARY TRAFFIC SIGNAL CONTROLLER
 - ESD [X] ELECTRIC SERVICE DISCONNECT, LIGHTING AND TRAFFIC SIGNAL
 - [□] EXISTING COMED ELECTRIC SERVICE TRANSFORMER
 - (5) INDICATES NUMBER OF CONDUCTORS IN CABLE. ALL CONDUCTORS TO BE NUMBER 14 AWG WIRE UNLESS OTHERWISE NOTED.
 - [V] VIDEO DETECTOR SENSOR
 - [●] CONFIRMATION BEACON
 - [▲] EMERGENCY VEHICLE LIGHT DETECTOR
 - [UPS] UNINTERRUPTIBLE POWER SUPPLY
 - [R Y G] TEMPORARY TRAFFIC SIGNAL HEAD (L.E.D.)



NOTES:

- HEADS SHALL BE PLACED AS INDICATED ON THE TEMPORARY TRAFFIC SIGNAL PLAN OR AS DIRECTED BY THE ENGINEER. THE CONTRACTOR SHALL FURNISH ENOUGH CABLE SLACK TO RELOCATE HEADS TO ANY POSITION ON THE SPAN WIRE OR AT LOCATIONS ILLUSTRATED ON THE PLANS FOR CONSTRUCTION STAGING.
- THE PROPOSED TEMPORARY BRIDGE TRAFFIC SIGNAL SHALL BE ACTIVATED, TESTED OPERATIONAL AND APPROVED BY THE ENGINEER BEFORE ANY ANY PERMANENT LANE CLOSURES.
- ALL LABOR AND MATERIALS TO COMPLY WITH THESE REQUIREMENTS SHALL BE CONSIDERED INCLUDED IN THE BID PRICE OF TEMPORARY BRIDGE TRAFFIC SIGNAL INSTALLTION.
- REMOVAL OF TEMPORARY SIGNALS SHOULD BE DONE AS DIRECTED BY THE ENGINEER AND MUST BE DONE IN COORDINATION WITH THE REMOVAL OF TEMPORARY LIGHTING.
- EXACT LOCATION OF EXISTING POWER POLE WITH COMED TRANSFORMER TO BE DETERMINED IN THE FIELD. COMED CONTACT INFORMATION FOR THIS PROJECT IS AS FOLLOWS:
FIELD REPRESENTATIVE: LUCILLE JONES (815)724-5607,
ACCOUNT NO. 2896102062. TRANSFORMER NO. 536321A3

PROPOSED EMERGENCY VEHICLE PREEMPTION SEQUENCE



LEGEND

- (*) SINGLE ENTRY PHASE
- (*) NUMBER REFERRING TO ASSOCIATED PHASE

PROPOSED EMERGENCY VEHICLE PREEMPTORS

PRIORITY LANE INTERVAL	3	4	5
MOVEMENT	→	←	↑

I.D.O.T
TRAFFIC SIGNAL INSTALLATION
ELECTRICAL SERVICE REQUIREMENTS

TYPE	NO. LAMPS	WATTAGE		% OPERATION	TOTAL WATTAGE
		INCAND.	LED		
SIGNAL (RED)	8	135	17	0.50	68
(YELLOW)	8	135	25	0.25	50
(GREEN)	8	135	15	0.25	30
ARROW		135	12	0.10	
PED. SIGNAL		90	25	1.00	
CONTROLLER	1	100	100	1.00	100.00
ILLUM. SIGN		84		0.05	
EVP	1		25	1.00	25
V.D.S.	1		25	1.00	25
FLASHER				0.50	--
ENERGY COSTS TO BE IDOT DISTRICT 1 TOTAL =					298
BILLED TO ADDRESS: 201 W.CENTER COURT SCHAUMBURG, IL 60196-1096					
ENERGY SUPPLY CONTACT: LUCILLE JONES PHONE: (815) 724-5607 COMPANY: COM. ED.					

ENTIRE SHEET REVISED