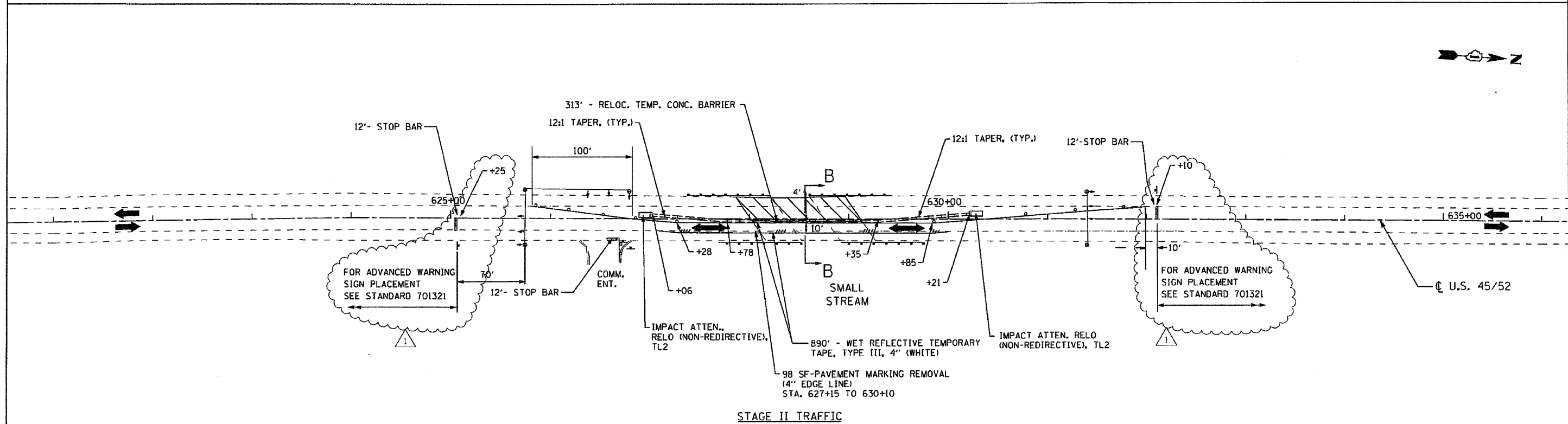


TRAFFIC CONTROL AND STAGING LEGEND

- WORK ZONE
- SIGN
- TRAFFIC SIGNAL
- DIRECTION OF TRAFFIC

- NOTES:
1. SEE STANDARD 701321 FOR ALL NOTES, DETAILS, SIGNS, REFLECTORS, AND BARRICADE PLACEMENT.
 2. TEMPORARY RUMBLE STRIPS ARE NOT REQUIRED.



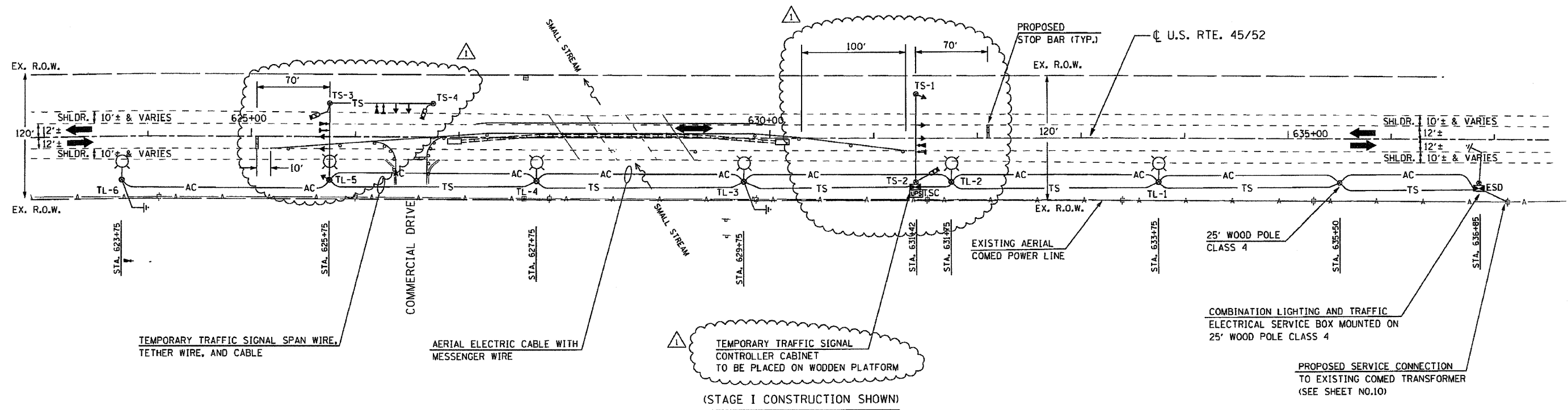


TEMPORARY LIGHTING LEGEND

- | | | |
|-----------------|-----------------|--|
| EXISTING | PROPOSED | |
| — | ⊙ | 400W, 120V, MCIII HPS. WITH PHOTO CELL 15' MA, 50 MH ON WOOD POLE. |
| — | — | AERIAL LINE (COMED/TELEPHONE) |
| | TL-1 ⊙ | WOODEN POLE (60' WOODEN CLASS 4) WITH TEMPORARY LIGHTING UNIT |
| | ⊙ | WOOD POLE (25' CLASS 4) FOR TEMPORARY LIGHTING |
| | — AC — | AERIAL ELECTRIC CABLE WITH MESSENGER WIRE |
| | ⊥ | 5/8" x 10' GROUND ROD |
| | ESD | ELECTRIC SERVICE DISCONNECT, LIGHTING AND TRAFFIC SIGNAL |
| ⊙ | | COMED POWER POLE |
| ⊞ | | TELEPHONE SPLICE BOX |

TEMPORARY TRAFFIC SIGNAL LEGEND

- | | | |
|-----------------|---|---|
| PROPOSED | | |
| ← | | TEMPORARY TRAFFIC SIGNAL HEAD |
| TSC | ⊞ | TEMPORARY TRAFFIC SIGNAL CONTROLLER CABINET |
| — TS — | | TEMPORARY TRAFFIC SIGNAL SPAN WIRE, TETHER WIRE, AND CABLE |
| ⊞ | | VIDEO DETECTOR SENSOR |
| TS-1 ⊙ | | WOOD POLE (CLASS 5 OR BETTER, 45 FOOT (13.7m) MINIMUM) FOR TEMPORARY TRAFFIC SIGNAL (TO BE INSTALLED 30' FROM EDGE OF TRAVELED WAY) |
| ↔ | | DIRECTION OF TRAFFIC FLOW |
| ⚠ | | EMERGENCY VEHICLE LIGHT DETECTOR |
| ⚠ | ⊥ | CONFIRMATION BEACON |
| ⚠ | ⊞ | UNINTERRUPTIBLE POWER SUPPLY |



FILE NAME = 60668 signal 1.dgn
PLOT DATE = 6/29/2008

CHRISTIAN-ROGE & ASSOCIATES, INC.
ENGINEERS-PLANNERS-SURVEYORS
211 WEST WACKER DRIVE
CHICAGO, ILLINOIS 60606
PHONE: (312)372-2023 FAX: (312)372-5274

DESIGNED - M.A.	REVISED ¹ ADD #1 08/28/08
DRAWN - M.A.	REVISED -
CHECKED - S.J.P. / M.A.	REVISED -
DATE - JULY 10, 2008	REVISED -

STATE OF ILLINOIS
DEPARTMENT OF TRANSPORTATION

TEMPORARY TRAFFIC SIGNAL PLAN
U.S. 45 / 52

SCALE: 1" = 50' SHEET NO. 1 OF 2 SHEETS STA. 627+50 TO STA. 629+12.1

F.A.P. RTE.	SECTION	COUNTY	TOTAL SHEETS	SHEET NO.
330	17 B-1-1-1	WILL	29	9
FED. ROAD DIST. NO. 1 ILLINOIS FED. AID PROJECT			CONTRACT NO. 60D68	

SEQUENCE OF OPERATION

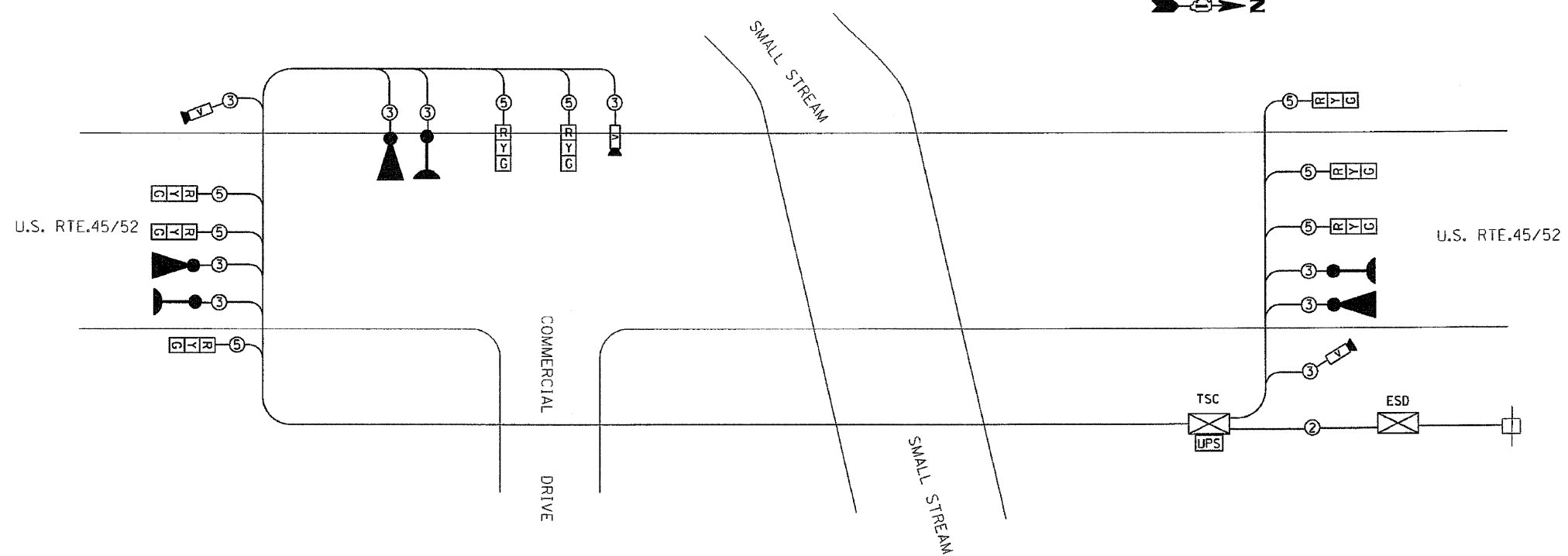
MOVEMENT	U.S. RTE. 45/52		U.S. RTE. 45/52		U.S. RTE. 45/52		F	L	A
	COMMERCIAL	DRIVE	COMMERCIAL	DRIVE	COMMERCIAL	DRIVE			
PHASE	2		6		8				
INTERVAL	1	2A	2B	3	4A	4B	5	6A	6B
CHANGE TO		6, 8			2, 8			2, 6	
U.S. RTE.45/52 SIGNAL (NORTH BOUND)	G	Y	R	R	R	R	R	R	R
U.S. RTE.45/52 SIGNAL (SOUTH BOUND)	R	R	R	G	Y	R	R	R	R
COMMERCIAL DRIVE SIGNAL (NORTH BOUND & SOUTH BOUND)	R	R	R	R	R	R	G	Y	R

TEMPORARY TRAFFIC SIGNAL BILL OF MATERIALS

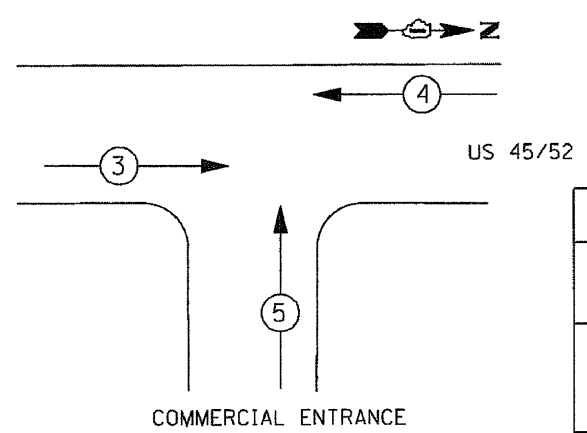
DESCRIPTION	UNIT	QUANTITY
TEMPORARY BRIDGE TRAFFIC SIGNAL INSTALLATION	EACH	1

TEMPORARY CABLE DIAGRAM LEGEND

- PROPOSED
- R TEMPORARY TRAFFIC SIGNAL SECTION OR PEDESTRIAN SIGNAL SECTION 12" (300 mm)
 - TSC X TEMPORARY TRAFFIC SIGNAL CONTROLLER
 - ESD X ELECTRIC SERVICE DISCONNECT, LIGHTING AND TRAFFIC SIGNAL
 - EXISTING COMED ELECTRIC SERVICE TRANSFORMER
 - 5 INDICATES NUMBER OF CONDUCTORS IN CABLE. ALL CONDUCTORS TO BE NUMBER 14 AWG WIRE UNLESS OTHERWISE NOTED.
 - V VIDEO DETECTOR SENSOR
 - CONFIRMATION BEACON
 - ▲ EMERGENCY VEHICLE LIGHT DETECTOR
 - UPS UNINTERRUPTIBLE POWER SUPPLY
 - R
Y
G TEMPORARY TRAFFIC SIGNAL HEAD (L.E.D.)



PROPOSED EMERGENCY VEHICLE PREEMPTION SEQUENCE



LEGEND

- * SINGLE ENTRY PHASE
- * NUMBER REFERRING TO ASSOCIATED PHASE

PROPOSED EMERGENCY VEHICLE PREEMPTORS			
PRIORITY LANE INTERVAL	3	4	5
MOVEMENT	→	←	↑

NOTES:

1. HEADS SHALL BE PLACED AS INDICATED ON THE TEMPORARY TRAFFIC SIGNAL PLAN OR AS DIRECTED BY THE ENGINEER. THE CONTRACTOR SHALL FURNISH ENOUGH CABLE SLACK TO RELOCATE HEADS TO ANY POSITION ON THE SPAN WIRE OR AT LOCATIONS ILLUSTRATED ON THE PLANS FOR CONSTRUCTION STAGING.
2. THE PROPOSED TEMPORARY BRIDGE TRAFFIC SIGNAL SHALL BE ACTIVATED, TESTED OPERATIONAL AND APPROVED BY THE ENGINEER BEFORE ANY ANY PERMANENT LANE CLOSURES.
3. ALL LABOR AND MATERIALS TO COMPLY WITH THESE REQUIREMENTS SHALL BE CONSIDERED INCLUDED IN THE BID PRICE OF TEMPORARY BRIDGE TRAFFIC SIGNAL INSTALLTION.
4. REMOVAL OF TEMPORARY SIGNALS SHOULD BE DONE AS DIRECTED BY THE ENGINEER AND MUST BE DONE IN COORDINATION WITH THE REMOVAL OF TEMPORARY LIGHTING.
4. EXACT LOCATION OF EXISTING POWER POLE WITH COMED TRANSFORMER TO BE DETERMINED IN THE FIELD. COMED CONTACT INFORMATION FOR THIS PROJECT IS AS FOLLOWS:
FIELD REPRESENTATIVE: LUCILLE JONES (815)724-5607,
ACCOUNT NO. 2896102062. TRANSFORMER NO. 536321A3

I.D.O.T
TRAFFIC SIGNAL INSTALLATION
ELECTRICAL SERVICE REQUIREMENTS

TYPE	NO. LAMPS	WATTAGE		% OPERATION	TOTAL WATTAGE
		INCAND.	LED		
SIGNAL (RED)	8	135	17	0.50	68
(YELLOW)	8	135	25	0.25	50
(GREEN)	8	135	15	0.25	30
ARROW		135	12	0.10	
PED. SIGNAL		90	25	1.00	
CONTROLLER	1	100	100	1.00	100.00
ILLUM. SIGN		84		0.05	
EVP	1		25	1.00	25
V.D.S.	1		25	1.00	25
FLASHER				0.50	--
ENERGY COSTS TO BE IDOT DISTRICT 1 TOTAL =					298
BILLED TO ADDRESS: 201 W.CENTER COURT SCHAUMBURG, IL 60196-1096					
ENERGY SUPPLY CONTACT: LUCILLE JONES PHONE: (815) 724-5607 COMPANY: COM. ED.					

ENTIRE SHEET REVISED