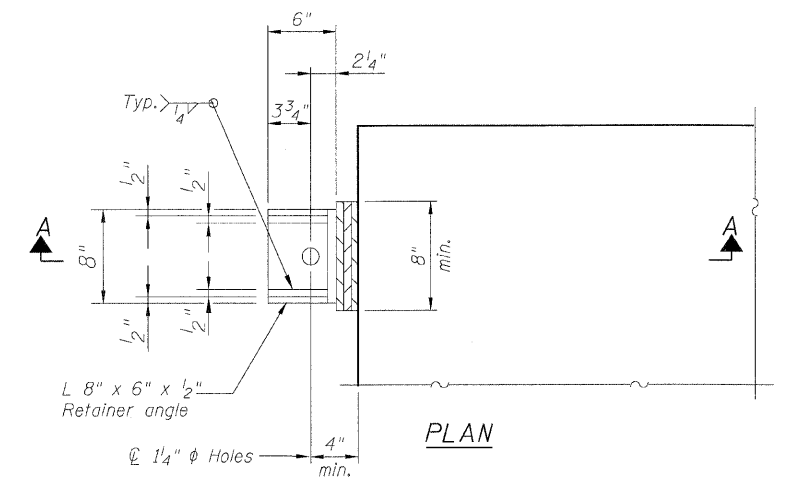
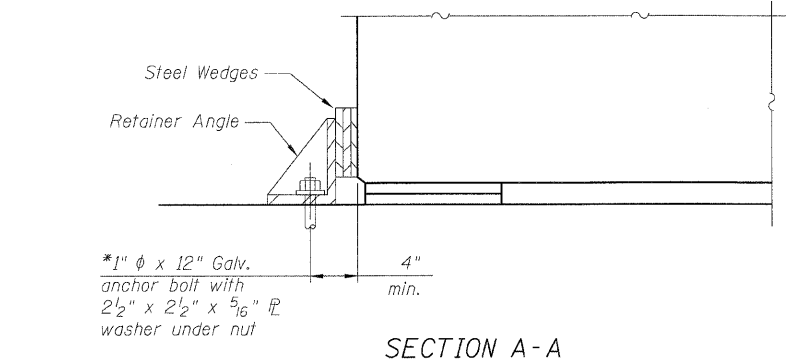
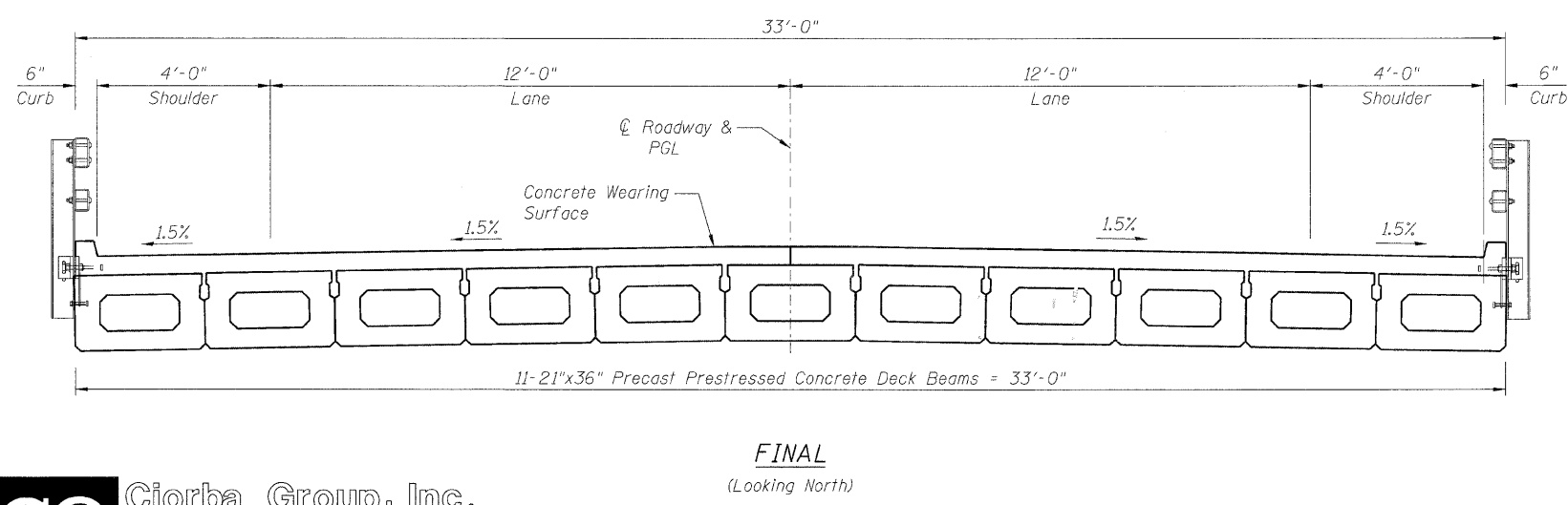
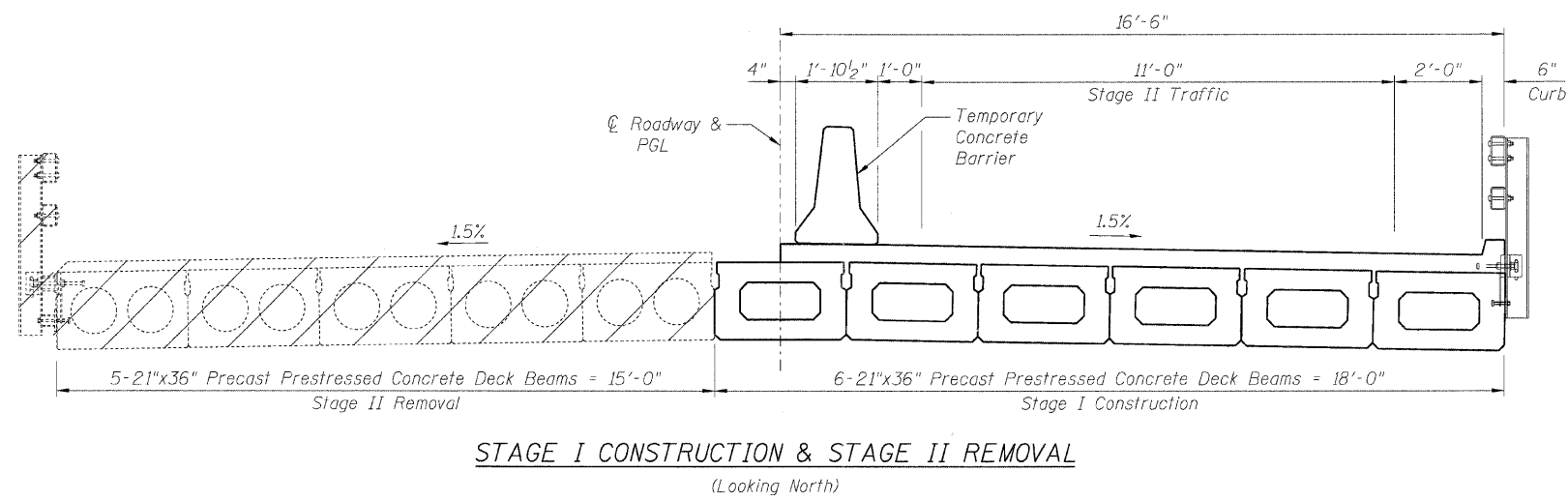
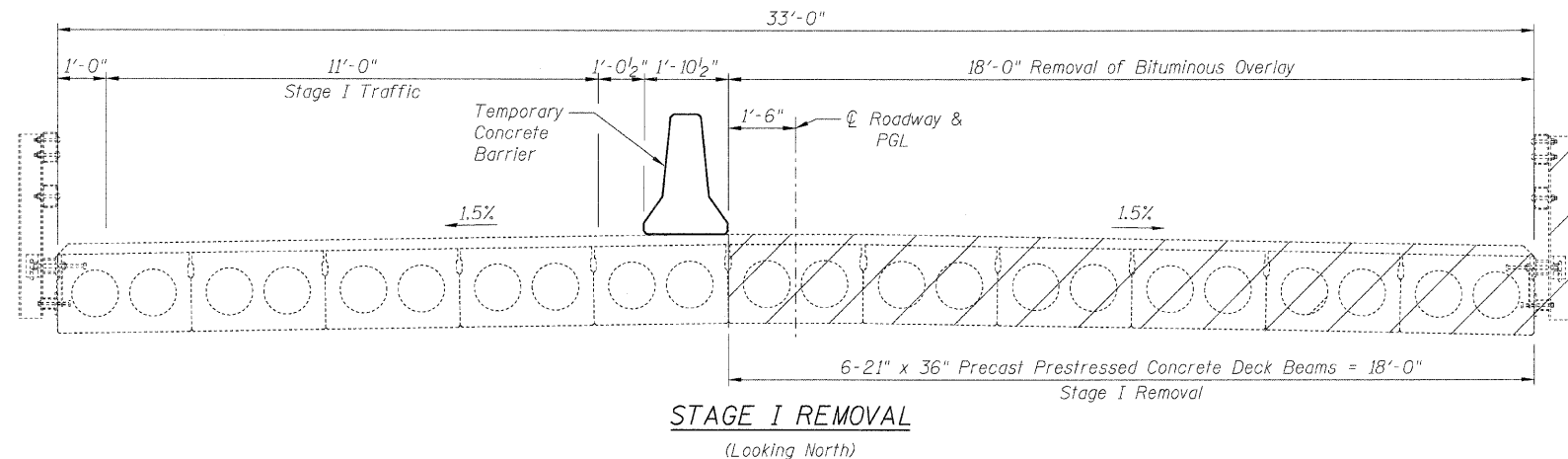


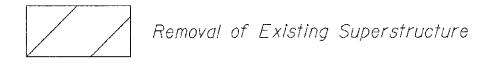
STATE OF ILLINOIS  
DEPARTMENT OF TRANSPORTATION



**TEMPORARY RETAINER ANGLE**

\* Retainer angle to be placed adjacent to center beam at South and East Abutments right after Stage I center beam is removed. Retainer angle shall be removed right before installation of the new stage I beams. Repeat procedure for stage II. Cost of retainer and accessories are included with Precast Prestressed Concrete Deck Beams.

**LEGEND:**



**NOTES:**

1. See Sheet S-3 for Temporary Concrete Barrier Details.
2. The Contractor is ultimately responsible of means and methods to ensure the complete stability of the structural members during construction.
3. Existing Bearing removal to be paid for under "Asbestos Bearing Pad Removal".

**STAGE CONSTRUCTION DETAILS**  
**US 52 OVER FORKED CREEK**  
**STA. 65+70**  
**S.N. 099-0133**

SHEET NO. S-2	F.A.P RTE.	SECTION	COUNTY	TOTAL SHEETS	SHEET NO.
	852	18B	WILL	31	17
S-13 SHEETS		CONTRACT NO. 60087			
FED. ROAD DIST. NO.		ILLINOIS	FED. AID PROJECT		

DESIGNED	B. Sauter
CHECKED	E. Mroczek
DRAWN	R. Danley
CHECKED	B. Sauter

**CG** Ciorba Group, Inc.  
CONSULTING ENGINEERS  
5507 North Cumberland Avenue, Suite 402 Chicago, Illinois 60656  
Tel. 773.775.4009 Fax 773.775.4014 Email chicago@ciorba.com

7/8/2008 rdentley m:\proj\3329\3329\_23\design\structural\road\shd\3329\_21\_02\_Stage\_Constructions.sht