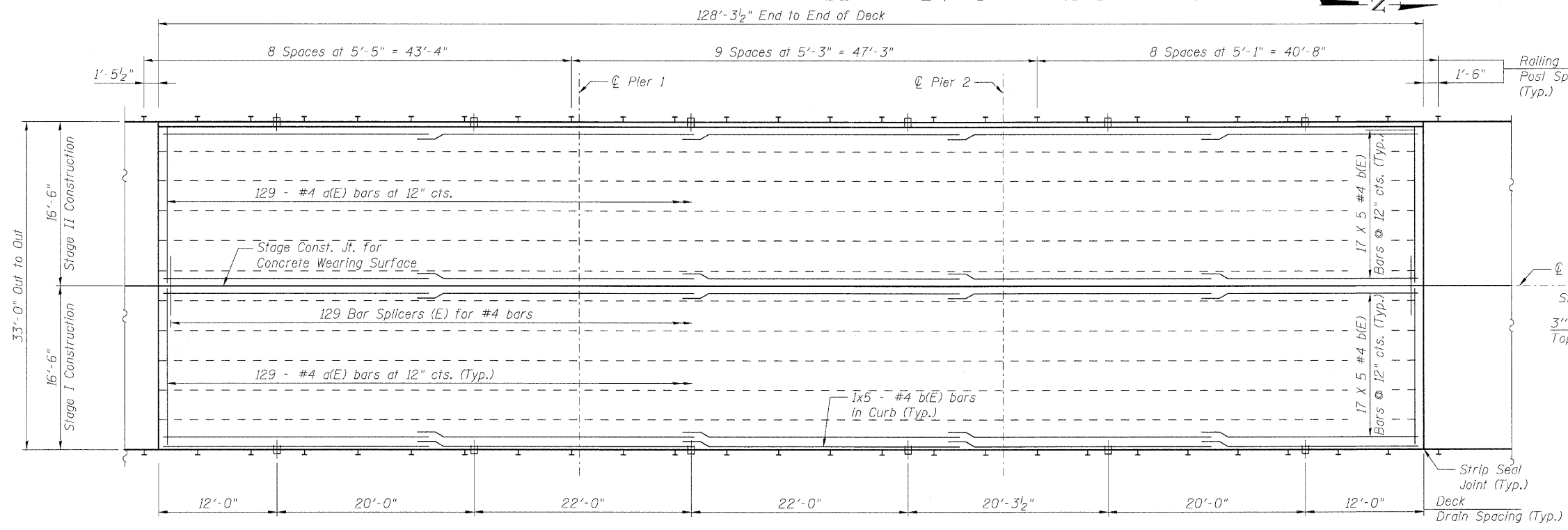
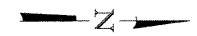
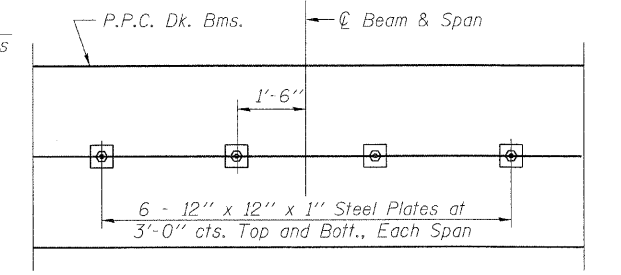


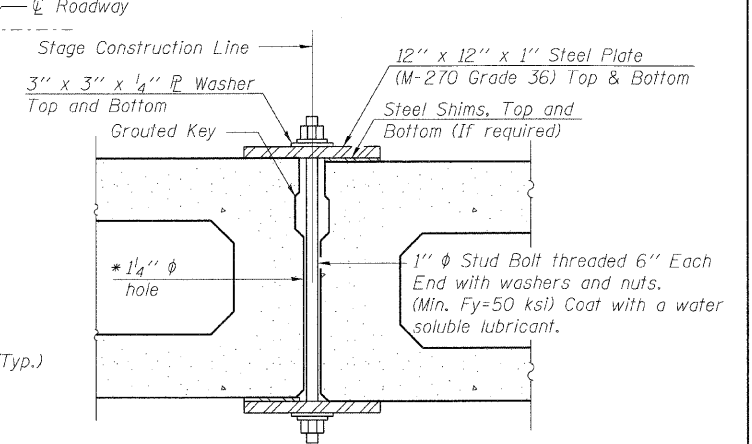
STATE OF ILLINOIS  
DEPARTMENT OF TRANSPORTATION



CONCRETE WEARING SURFACE - PLAN

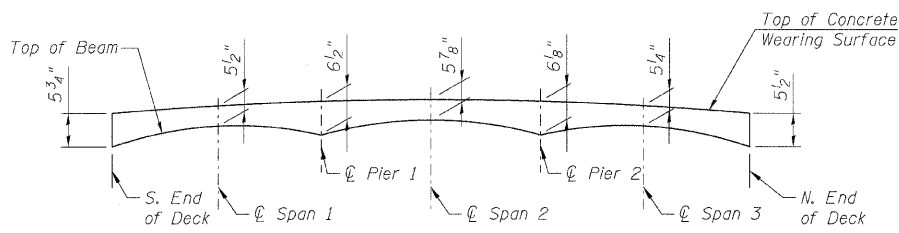


PLAN

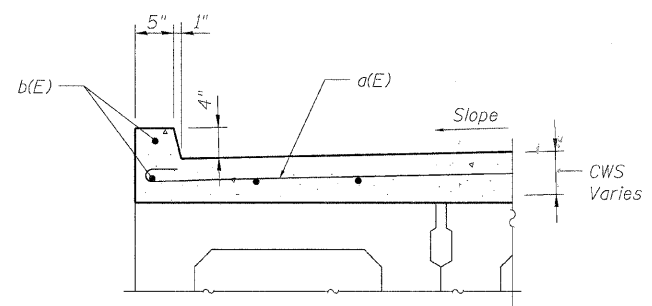


SECTION

\* The fabricator shall cast 2" diameter semi-circular recesses in the sides of each beam adjacent to the stage construction line. These recesses shall align to form a hole at the appropriate locations for the clamping device bolts. The Contractor shall show the details on the shop drawings.

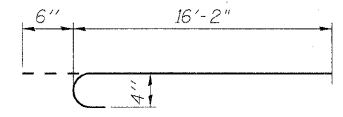


REINFORCED CONCRETE WEARING SURFACE PROFILE



SECTION THRU CURB

Curbs shall be poured in the field.



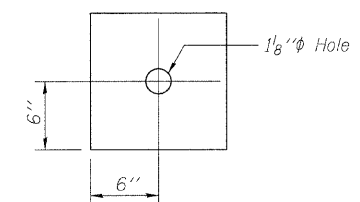
a(E) BAR

BILL OF MATERIAL

Bar	No.	Size	Length	Shape
a(E)	258	#4	16'-8"	
b(E)	180	#4	26'-11"	
Reinforcement Bars, Epoxy Coated			Pound	6,070
Concrete Wearing Surface			Sq. Yd.	470
Bridge Deck Grooving			Sq. Yd.	442
Bar Splicers			Each	129
Preformed Joint Strip Seal			Foot	66

SHEAR KEY CLAMPING DETAILS AT STAGE CONST. JT.

Cost included with Precast Prestressed Concrete Deck Beams. See Stage Construction Details for traffic lanes.



CLAMPING PLATE

LAP LENGTH  
# 4 bars - 1'-8"

SUPERSTRUCTURE DETAILS 1

US 52 OVER FORKED CREEK

STA. 65+70

S.N. 099-0133

NOTES:

1. Reinforcement bars designated (E) shall be epoxy coated.
2. Bars indicated thus 2x3-#4 etc. indicates 2 lines of bars with 3 lengths per line.

SHEET NO.	F.A.P RTE.	SECTION	COUNTY	TOTAL SHEETS	SHEET NO.
S-6	852	18B	WILL	31	21
S-13 SHEETS			CONTRACT NO. 60D87		
FED. ROAD DIST. NO.		ILLINOIS FED. AID PROJECT			

DESIGNED	B. Sauter
CHECKED	E. Mroczek
DRAWN	R. Danley
CHECKED	B. Sauter

**Ciorba Group, Inc.**  
CONSULTING ENGINEERS  
5507 North Cumberland Avenue, Suite 402 Chicago, Illinois 60656  
Tel. 773.775.4009 Fax 773.775.4014 Email chicago@ciorba.com

7/6/2008  
rdn:bj  
m:\pre\_13329\_23\design\structure\3329\_23\_06\_Superstructure\_Details\sheet