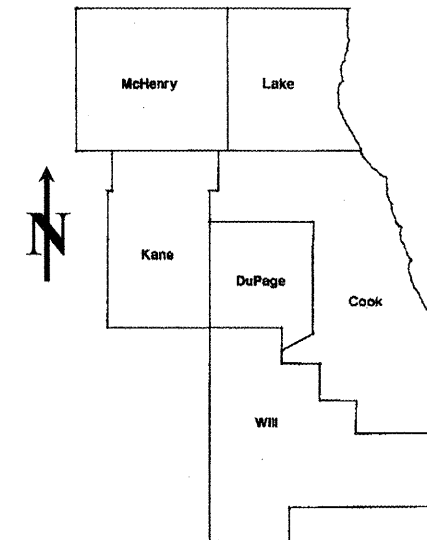


ROUTE	SECTION	COUNTY	TOTAL SHEETS	SHEET NUMBER
VARIOUS	2008-050 PP	COOK	18	1

STATE OF ILLINOIS
DEPARTMENT OF TRANSPORTATION
DIVISION OF HIGHWAYS
DISTRICT ONE
PROPOSED HIGHWAY PLANS

CONTRACT NO. 60E99

D-91-556-08



LOCATION OF IMPROVEMENT INDICATED THUS:

FOR INDEX OF SHEETS SEE SHEET 2

VARIOUS ROUTES
 SECTION: 2008-050 PP
 VARIOUS INTERSTATE RAMPS
 PAVEMENT PATCHING
 COOK COUNTY
 C-91-556-08

STATE OF ILLINOIS
DEPARTMENT OF TRANSPORTATION
DIVISION OF HIGHWAYS

SUBMITTED: JUNE 20, 2008

Diana M. O'Keefe *gr*
 DEPUTY DIRECTOR OF HIGHWAYS, REGION ENGINEER

June 27, 2008
Eric E. Harney *RD*
 Interim ENGINEER OF DESIGN AND ENVIRONMENT

June 27, 2008
Christine M. Reed *RD*
 DIRECTOR, DIVISION OF HIGHWAYS

PRINTED BY THE AUTHORITY
OF THE STATE OF ILLINOIS

J.U.L.I.E.: JOINT UTILITY LOCATION
INFORMATION FOR EXCAVATION
(312) 744-7000

CONTRACT NO. 60E99

DISTRICT ONE - DESIGN - PLAN PREPARATION ENGINEER:
 KEN ENG / (847) 705-4247

INDEX OF SHEETS

<u>SHEET NO.</u>	<u>DESCRIPTION</u>
1	TITLE SHEET
2	INDEX OF SHEETS, STATE STANDARDS AND GENERAL NOTES
3	SUMMARY OF QUANTITIES
4	GENERAL LOCATION MAP
5-6	PATCHING SCHEDULE
7	ROADWAY AND PAVEMENT MARKING PLAN - OHIO STREET FEEDER RAMP
8	BUTT JOINT AND HMA TAPER DETAILS
9	ENTRANCE RAMP CLOSURE DETAILS
10	FREEWAY SINGLE & MULTI-LANE WEAVE
11	TRAFFIC CONTROL AND PROTECTION FOR SIDE ROADS, INTERSECTIONS AND DRIVEWAYS
12	TYPICAL APPLICATIONS RAISED REFLECTIVE PAVEMENT MARKERS (SNOW-PLOW RESISTANT)
13-14	MULTI-LANE FREEWAY PAVEMENT MARKING DETAILS
15	DISTRICT ONE TYPICAL PAVEMENT MARKINGS
16	TRAFFIC CONTROL AND PROTECTION AT TURN BAYS (TO REMAIN OPEN TO TRAFFIC)
17	FREEWAY SHOULDER CLOSURES AND PARTIAL RAMP CLOSURES
18	SIGNING FOR FLAGGING OPERATIONS AT WORK ZONE OPERATIONS

STATE STANDARDS

<u>STANDARD NO.</u>	<u>DESCRIPTION</u>
000001-05	TYPICAL SYMBOLS, ABBREVIATIONS AND PATTERNS
442201-03	CLASS C AND D PATCHES
701400-02	APPROACH TO LANE CLOSURE, FREEWAY/EXPRESSWAY
701401-04	LANE CLOSURE, FREEWAY/EXPRESSWAY
701901	TRAFFIC CONTROL DEVICES

GENERAL NOTES

BEFORE STARTING ANY EXCAVATION, THE CONTRACTOR SHALL CALL "JULIE" AT (800) 892-0123 OR 811 FOR FIELD LOCATIONS OF BURIED ELECTRIC, TELEPHONE AND GAS FACILITIES. (48 HOUR NOTIFICATION REQUIRED)

BEFORE STARTING ANY EXCAVATION, THE CONTRACTOR SHALL CALL "C.U.A.N." (CHICAGO UTILITY ALERT NETWORK) AT (312) 744-7000 FOR FIELD LOCATIONS OF BURIED ELECTRIC, TELEPHONE AND GAS UTILITIES (48 HOUR NOTIFICATION IS REQUIRED).

THE CONTRACTOR WILL NOT BE ALLOWED TO SET UP A YARD OR FIELD OFFICE ON STATE (OR TOLLWAY) PROPERTY WITHOUT WRITTEN PERMISSION FROM THE DEPARTMENT (OR ISTHA)

WHEN ARTIFICIAL LIGHTING IS UTILIZED IN NIGHT OPERATIONS, THE CONTRACTOR SHALL EXERCISE THE UTMOST PRECAUTIONS IN PREVENTING ADVERSE VISABILITY TO THE MOTORING PUBLIC AND ADJOINING RESIDENTIAL AREAS.

ANY PAVEMENT MARKINGS AND RAISED REFLECTIVE PAVEMENT MARKERS OBLITERATED BY MILLING AND RESURFACING OPERATIONS ON SIDE STREETS AND ENTRANCES SHALL BE REPLACED AND PAID FOR IN KIND.

BEFORE BEGINNING ANY WORK, THE CONTRACTOR SHALL RETAIN AND RECORD FOR FUTURE REFERENCE, ALL EXISTING PAVEMENT MARKING LINES (AND RAISED REFLECTIVE PAVEMENT MARKERS) IN ORDER THAT THESE LOCATIONS CAN BE RE-ESTABLISHED FOR STRIPING. EXACT LOCATIONS OF ALL PAVEMENT MARKINGS SHALL BE AS DIRECTED BY THE ENGINEER.

ALL PAVEMENT PATCHING LOCATIONS WILL BE DETERMINED IN THE FIELD BY THE ENGINEER.

THE CONTRACTOR SHALL CONTACT THE DISTRICT ONE TRAFFIC CONTROL SUPERVISOR AT (847) 705-4470 A MINIMUM OF 72 HOURS IN ADVANCE OF BEGINNING WORK.

THE ENGINEER SHALL CONTACT MR. WALLY CZARNY, AREA TRAFFIC FIELD ENGINEER AT (773) 685-4342 MINIMUM OF TWO (2) WEEKS PRIOR TO PLACEMENT OF PERMANENT PAVEMENT MARKINGS.

DOUBLE LANE MARKERS ARE TO BE USED AS SHOWN ON THE DISTRICT ONE DETAIL "TYPICAL APPLICATIONS - RAISED REFLECTIVE PAVEMENT MARKERS (SNOW-PLOW RESISTANT)" SHOWN IN THE PLANS.

THE EXISTING ROADWAY TYPICAL SECTION IS ASSUMED TO HAVE A 3 INCH HOT-MIX ASPHALT OVERLAY ON TOP OF A TEN INCH CONCRETE BASE.

HOT-MIX ASPHALT MIXTURE REQUIREMENTS

	MIXTURE TYPE	AC TYPE	AIR VOIDS (%)
ROADWAY	HOT-MIX ASPHALT SURFACE COURSE, MIX "D", N90 (IL 9.5 MM), 2"	PG 64-22	4% @ 90 GYR
PATCHES	CLASS D PATCHES, (HMA BINDER IL-25.0 MM)	PG 64-22	4% @ 105 GYR
	NOTE: TOP 2 INCHES OF PATCHES SHALL BE SAME AS SURFACE COURSE:		
	HOT-MIX ASPHALT SURFACE COURSE, MIX "D", N90 (IL 9.5 MM), 2"	PG 64-22	4% @ 90 GYR
	POLYMERIZED HOT-MIX ASPHALT SURFACE COURSE, MIX "F", N90 (IL 9.5 MM), 2"	SBS/SBR PG 70-22	4% @ 90 GYR

THE UNIT WEIGHT USED TO CALCULATE ALL HOT-MIX ASPHALT SURFACE MIXTURE QUANTITIES IS 112 LBS/SY/IN.

**STATE OF ILLINOIS
DEPARTMENT OF TRANSPORTATION**

INDEX OF SHEETS, STATE STANDARDS AND GENERAL NOTES

SCALE: SHEET NO. OF SHEETS STA. TO STA.

F.A. RTE. VAR.	SECTION	COUNTY	TOTAL SHEETS	SHEET NO.
	2008-050 PP	COOK	18	2
CONTRACT NO. 60E99				
FED. ROAD DIST. NO. 1 ILLINOIS FED. AID PROJECT				

FILE NAME = c:\projects\136508\design_aa.dgn

USER NAME = wlgreendp

DESIGNED -

REVISED -

DRAWN -

REVISED -

PLOT SCALE = 100.0000' / IN.

CHECKED -

REVISED -

PLOT DATE = 6/25/2008

DATE -

REVISED -

SUMMARY OF QUANTITIES			URBAN 100% STATE		CONSTRUCTION TYPE CODE				
CODE NO	ITEM	UNIT	TOTAL QUANTITIES						
				1000-2A					
40600200	BITUMINOUS MATERIALS (PRIME COAT)	TON	4	4					
40600300	AGGREGATE (PRIME COAT)	TON	17	17					
40600400	MIXTURE FOR CRACKS, JOINTS, AND FLANGWAYS	TON	25	25					
40600895	CONSTRUCTING TEST STRIP	EACH	2	2					
40600982	HOT-MIX ASPHALT SURFACE REMOVAL - BUTT JOINT	SO YD	512	512					
40603345	HOT-MIX ASPHALT SURFACE COURSE, MIX "D", N90	TON	422	422					⚠
40603595	POLYMERIZED HOT-MIX ASPHALT SURFACE COURSE, MIX "F", N90	TON	515	515					
44000157	HOT-MIX ASPHALT SURFACE REMOVAL, 2"	SO YD	8353	8353					⚠
44201769	CLASS D PATCHES, TYPE III, 10 INCH	SO YD	44	44					
67000400	ENGINEER'S FIELD OFFICE, TYPE A	CAL MO	3	3					
67100100	MOBILIZATION	L SUM	1	1					
* 78000100	THERMOPLASTIC PAVEMENT MARKING - LETTERS AND SYMBOLS	SO FT	146	146					
* 78000200	THERMOPLASTIC PAVEMENT MARKING - LINE 4"	FOOT	5836	5836					⚠
* 78000650	THERMOPLASTIC PAVEMENT MARKING - LINE 24"	FOOT	58	58					
* 78003110	PREFORMED PLASTIC PAVEMENT MARKING, TYPE B - LINE 4"	FOOT	80	80					
* 78003120	PREFORMED PLASTIC PAVEMENT MARKING, TYPE B - LINE 5"	FOOT	468	468					
* 78003130	PREFORMED PLASTIC PAVEMENT MARKING, TYPE B - LINE 6"	FOOT	300	300					
* 78100100	RAISED REFLECTIVE PAVEMENT MARKER	EACH	50	50					
78300200	RAISED REFLECTIVE PAVEMENT MARKER REMOVAL	EACH	50	50					
X7011015	TRAFFIC CONTROL AND PROTECTION (EXPRESSWAYS)	L SUM	1	1					

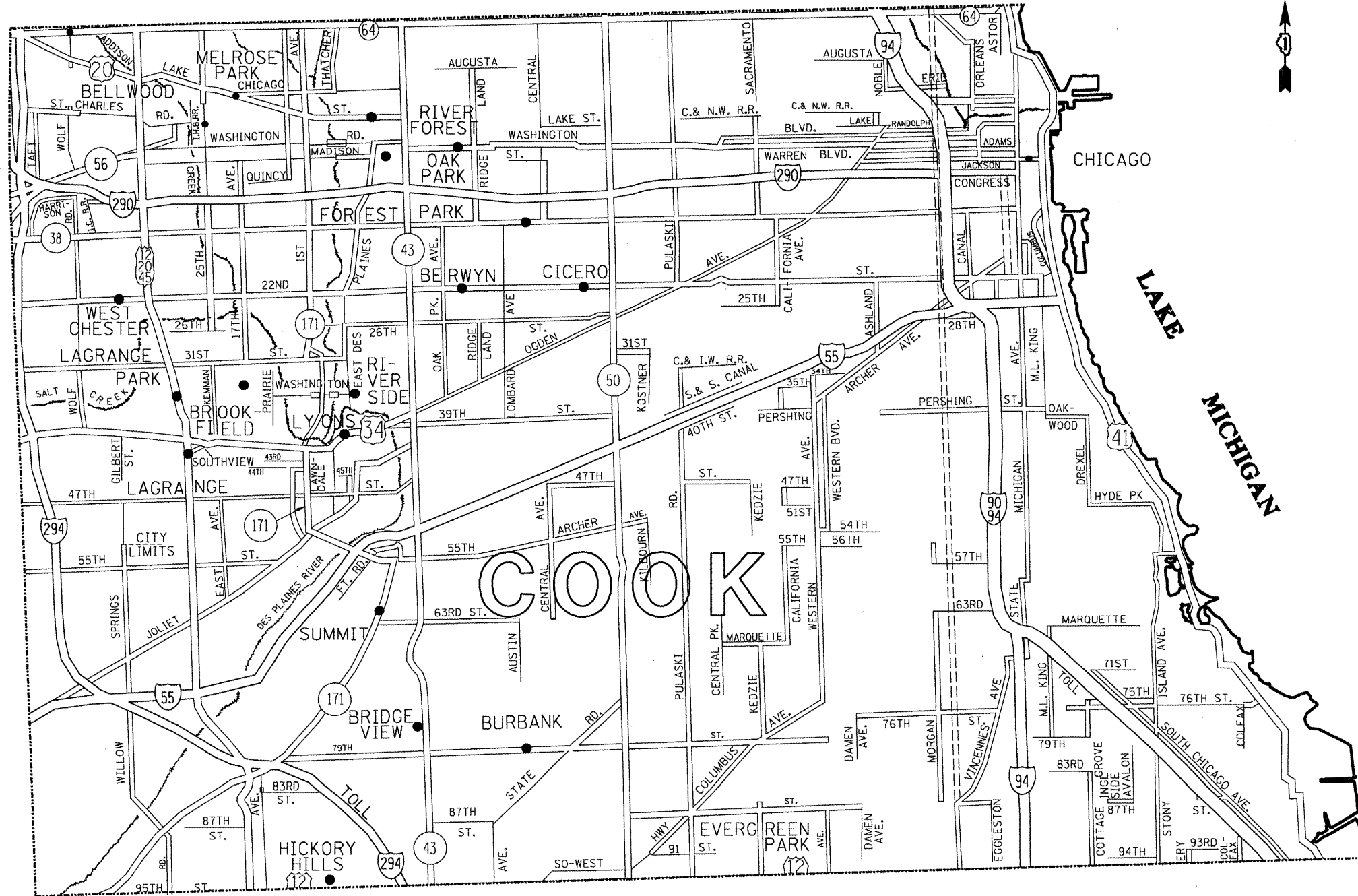
SUMMARY OF QUANTITIES				CONSTRUCTION TYPE CODE				
CODE NO	ITEM	UNIT	TOTAL QUANTITIES					

* SPECIALTY ITEMS

⚠ Rev. 7-22-08

REVISIONS	
NAME	DATE

ILLINOIS DEPARTMENT OF TRANSPORTATION
SUMMARY OF QUANTITIES



**STATE OF ILLINOIS
DEPARTMENT OF TRANSPORTATION**

GENERAL LOCATION MAP - COOK COUNTY

SCALE: SHEET NO. OF SHEETS STA. TO STA.

FILE NAME =
c:\projects\136508\design_aa.dgn

USER NAME = wilgreendp
DESIGNED -
DRAWN -
CHECKED -
PLOT DATE = 6/25/2008

DESIGNED -	REVISED -
DRAWN -	REVISED -
CHECKED -	REVISED -
DATE -	REVISED -

F.A. RTE.	SECTION	COUNTY	TOTAL SHEETS	SHEET NO.
VAR.	2008-050 PP	COOK	18	4
FED. ROAD DIST. NO.			ILLINOIS FED. AID PROJECT	
			CONTRACT NO. 60E99	

LOCATIONS FOR INTERSTATE 55	REPAIR LENGTH (FT)	REPAIR WIDTH (FT)	REPAIR AREA (SF)	REPAIR AREA (SY)	SURFACE TYPE	REPAIR WORK
NB I-55 @ LAGRANGE RD - SOUTH EXIT RAMP	9	15	135	15	HMA	HMA SURF REM & RESURF
	5	12	60	7	HMA	HMA SURF REM & RESURF
	12	12	144	16	HMA	HMA SURF REM & RESURF
	12	12	144	16	HMA	HMA SURF REM & RESURF
NB I-55 @ LAGRANGE RD - NB ENTRANCE RAMP	10	14	140	16	HMA	HMA SURF REM & RESURF
	114	14	1596	177	HMA	HMA SURF REM & RESURF
SB I-55 @ LAGRANGE RD - NB EXIT RAMP	18	12	216	24	HMA	HMA SURF REM & RESURF
NB I-55 @ 1ST AVENUE - SB EXIT RAMP	12	12	144	16	HMA	HMA SURF REM & RESURF
	12	12	144	16	HMA	HMA SURF REM & RESURF
NB I-55 @ CICERO AVE - ENTRANCE RAMP	44	12	528	59	HMA	HMA SURF REM & RESURF
	12	12	144	16	HMA	HMA SURF REM & RESURF
	18	12	216	24	HMA	HMA SURF REM & RESURF
SB I-55 @ CICERO AVE - EXIT RAMP	12	12	144	16	HMA	HMA SURF REM & RESURF
SB I-55 @ CICERO AVE - ENTRANCE RAMP	23	12	276	31	HMA	HMA SURF REM & RESURF
	16	12	192	21	HMA	HMA SURF REM & RESURF
SB I-55 @ PULASKI ROAD - EXIT RAMP	12	12	144	16	HMA	HMA SURF REM & RESURF
	10	12	120	13	HMA	HMA SURF REM & RESURF
	10	12	120	13	HMA	HMA SURF REM & RESURF
	12	12	144	16	HMA	HMA SURF REM & RESURF
	12	12	144	16	HMA	HMA SURF REM & RESURF
SB I-55 @ PULASKI ROAD - ENTRANCE RAMP	12	12	144	16	HMA	HMA SURF REM & RESURF
	12	12	144	16	HMA	HMA SURF REM & RESURF
NB I-55 @ STATE STREET - ENTRANCE RAMP	12	15	180	20	PCC	CLASS D PATCH
SB I-55 @ STATE STREET - EXIT RAMP	12	12	144	16	PCC	CLASS D PATCH
SB LAKE SHORE DRIVE RAMP TO SB I-55	752	22	16544	1838	HMA	HMA SURF REM & RESURF

NB I-55 @ PULASKI ROAD - ENTRANCE RAMP	24	12	288	32	HMA	HMA SURF REM & RESURF
NB I-55 @ HARLEM AVE - EXIT RAMP	4	12	48	5	HMA	HMA SURF REM & RESURF
	4	12	48	5	HMA	HMA SURF REM & RESURF
NB I-55 @ CALIFORNIA AVE - EXIT RAMP	24	3	72	8	PCC	CLASS D PATCH

(7-18-08)

Rev. 7-22-08

FILE NAME * c:\projects\138508\design\sa.dgn	USER NAME * wjgreendp	DESIGNED -	REVISED - 7/15/08 - DPW	STATE OF ILLINOIS DEPARTMENT OF TRANSPORTATION	PATCHING SCHEDULE			F.A. RTE.	SECTION	COUNTY	TOTAL SHEETS	SHEET NO.	
		DRAWN -	REVISED -		SCALE:	SHEET NO.	OF SHEETS	STA.	TO STA.	2008-050 PP	COOK	18	5
		CHECKED -	REVISED -								CONTRACT NO. 60E99		
		DATE -	REVISED -								FED. ROAD DIST. NO. ILLINOIS FED. AID PROJECT		

LOCATIONS FOR INTERSTATE 290	REPAIR LENGTH (FT)	REPAIR WIDTH (FT)	REPAIR AREA (SF)	REPAIR AREA (SY)	SURFACE TYPE	REPAIR WORK
EB I-290 EXIT RAMP TO PAULINA AVENUE	5	12	60	7	HMA	HMA SURF REM & RESURF
EB I-290 RAMP TO NB KENNEDY EXPY	5	12	60	7	HMA	HMA SURF REM & RESURF
	4	12	48	5	HMA	HMA SURF REM & RESURF
NB DAN RYAN EXPY TO WB I-290	4	12	48	5	HMA	HMA SURF REM & RESURF
	4	12	48	5	HMA	HMA SURF REM & RESURF
	8	12	96	11	HMA	HMA SURF REM & RESURF
NB DAN RYAN RAMP CONC SECT TO BRIDGE ABUTMENT	300	16	4800	533	HMA	HMA SURF REM & RESURF
BRIDGE ABUTMENT TO GORE AREA NW QUADRANT	400	16	6400	711	HMA	HMA SURF REM & RESURF

WB I-290 ENTRANCE RAMP FROM INDEPENDENCE AVE	12	12	144	16	HMA	HMA SURF REM & RESURF
--	----	----	-----	----	-----	-----------------------

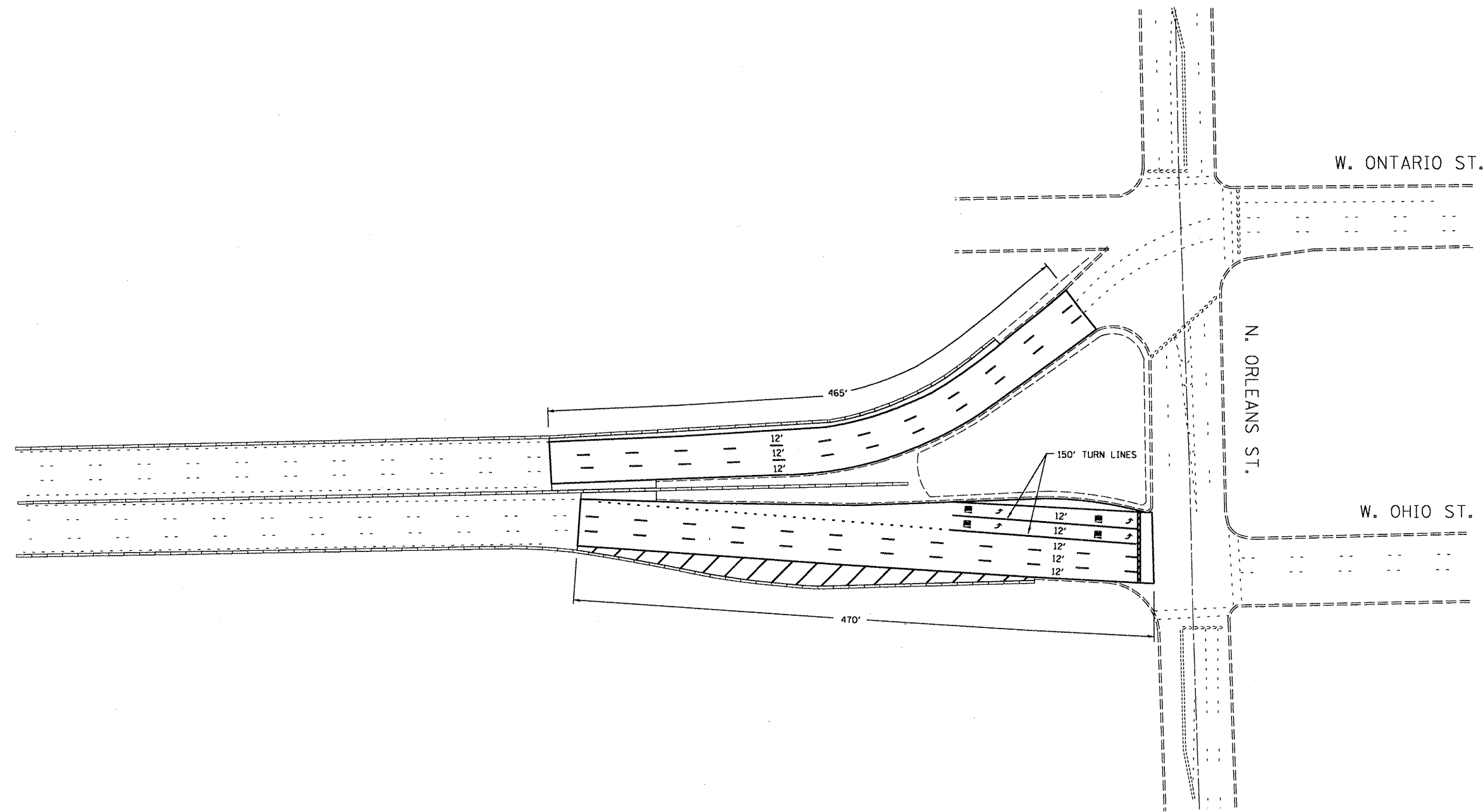


LOCATIONS FOR OHIO STREET FEEDER	REPAIR LENGTH (FT)	REPAIR WIDTH (FT)	REPAIR AREA (SF)	REPAIR AREA (SY)	SURFACE TYPE	REPAIR WORK
EASTBOUND OHIO STREET FEEDER RAMP	470	VARIES	24444	2716	HMA	HMA SURF REM & RESURF MAINLINE ONLY - NO SHLDS
WESTBOUND OHIO STRET FEEDER RAMP	465	VARIES	16929	1881	HMA	HMA SURF REM & RESURF MAINLINE ONLY - NO SHLDS
NOTE: USE POLYMERIZED HMA SURFACE COURSE, MIX "F", N90 AT THESE LOCATIONS						

(7-15-08)

Rev. 7-22-08

FILE NAME * d:\projects\136508\design_ea.dgn	USER NAME * wilgrendp	DESIGNED -	REVISED - 7/15/08 - DPW	STATE OF ILLINOIS DEPARTMENT OF TRANSPORTATION	PATCHING SCHEDULE	F.A. RTE.	SECTION	COUNTY	TOTAL SHEETS	SHEET NO.
PLOT SCALE * 1/8" = 1' IN.	CHECKED -	REVISED -	VAR.			2008-050 PP	COOK	18	6	
PLOT DATE * 7/15/2008	DATE -	REVISED -	SCALE:			SHEET NO.	OF SHEETS	STA.	TO STA.	FED. ROAD DIST. NO.

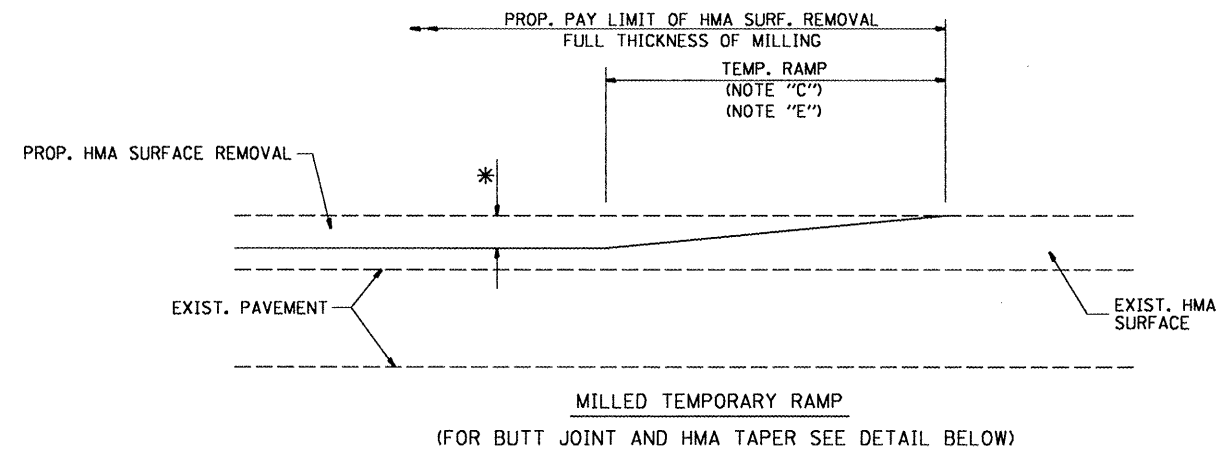


FILE NAME = c:\projects\136508\design_aa.dgn	USER NAME = wilgreendp	DESIGNED -	REVISED -
		DRAWN -	REVISED -
		CHECKED -	REVISED -
		DATE -	REVISED -

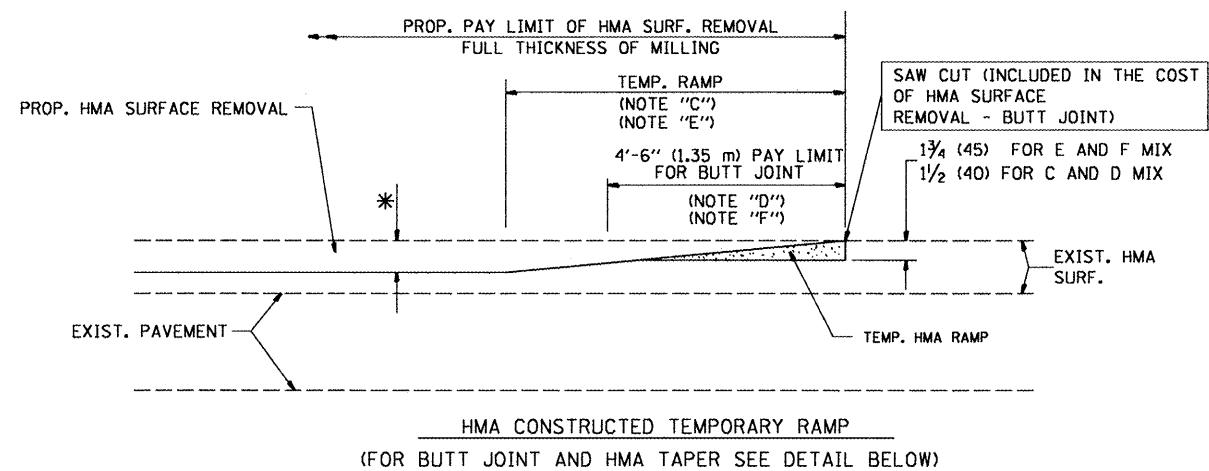
**STATE OF ILLINOIS
DEPARTMENT OF TRANSPORTATION**

ROADWAY AND PAVEMENT MARKING PLAN OHIO STREET FEEDER RAMP			
SCALE:	SHEET NO.	OF SHEETS	STA. TO STA.

F.A. RTE.	SECTION	COUNTY	TOTAL SHEETS	SHEET NO.
VAR.	2008-050 PP	COOK	18	7
CONTRACT NO. 60E99				
FED. ROAD DIST. NO. ILLINOIS FED. AID PROJECT				

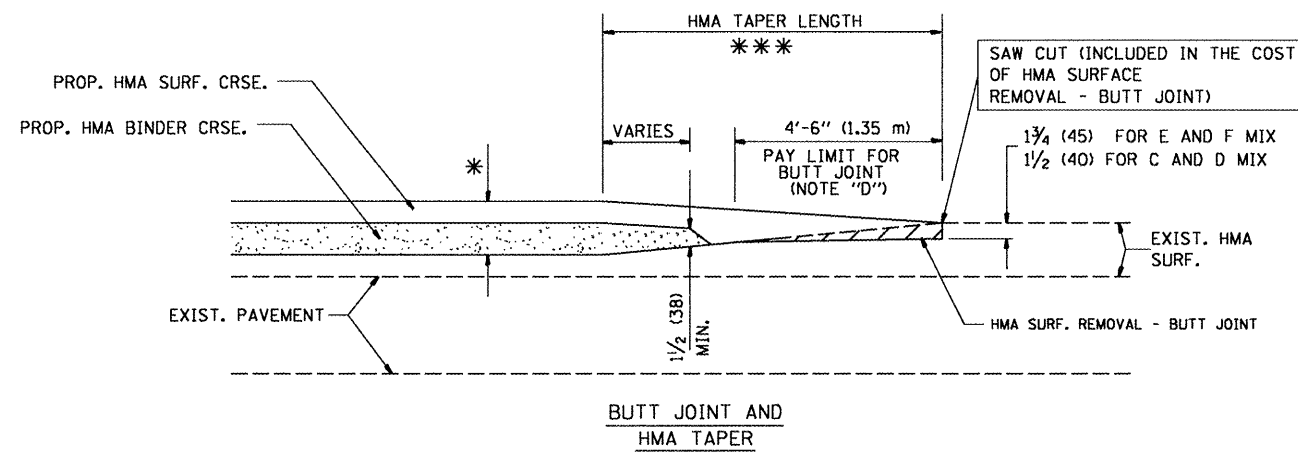


OPTION 1

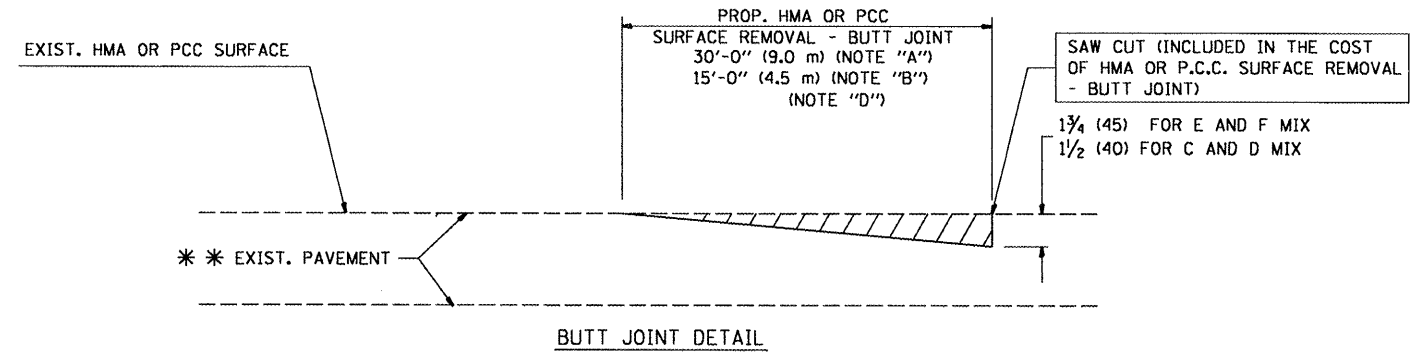


OPTION 2

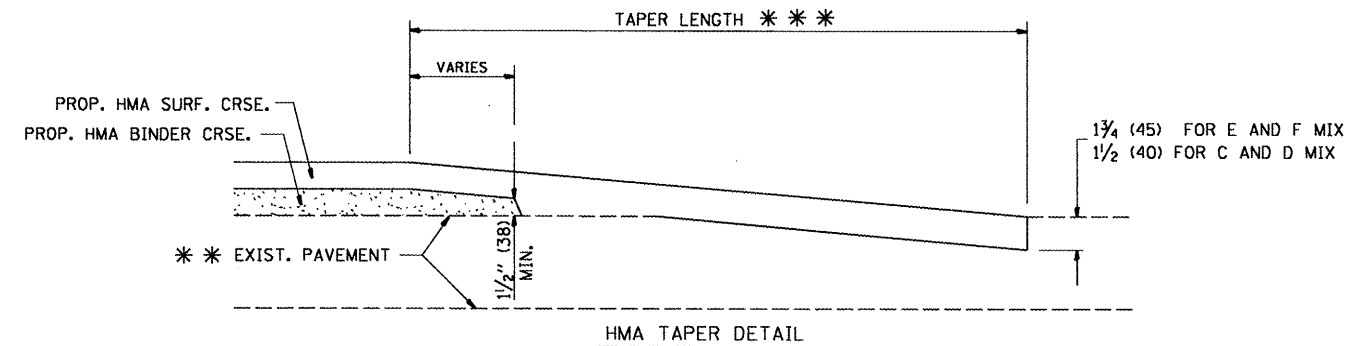
TYPICAL TEMPORARY RAMP



TYPICAL BUTT JOINT AND HMA TAPER FOR MILLING AND RESURFACING



BUTT JOINT DETAIL



HMA TAPER DETAIL

TYPICAL BUTT JOINT AND HMA TAPER FOR RESURFACING ONLY

*** PC CONCRETE, HMA OR HMA RESURFACED PAVEMENT.

NOTES

- A: MAINLINE ROADWAYS AND MAJOR SIDE ROADS.
 - B: MINOR SIDE ROADS.
 - C: THE TEMP. RAMP SHALL BE CONSTRUCTED IMMEDIATELY UPON REMOVAL OF THE EXISTING HMA SURFACE.
 - D: THE BUTT JOINT SHALL BE CONSTRUCTED IMMEDIATELY PRIOR TO PLACING THE PROPOSED HMA COURSES.
 - E: TAPER THE TEMP. RAMP AT A RATE OF 3'-0" (900 mm) PER 1 INCH (25 mm) OF MILLING THICKNESS.
 - F: INSTALLATION AND REMOVAL OF THE 4'-6" (1.35 m) TEMP. RAMP IS INCLUDED IN COST OF HMA SURFACE REMOVAL - BUTT JOINT
 - G: SEE ARTICLE 406.08 AND 406.14 OF THE STANDARD SPECIFICATIONS FOR "HMA AND/OR PCC SURFACE REMOVAL, BUTT JOINT".
- * SEE TYPICAL SECTIONS FOR MILLING THICKNESS.
- *** 20'-0" (6.1 m) PER 1 (25) RESURFACING (NOTE "A")
 10'-0" (3.0 m) PER 1 (25) RESURFACING (NOTE "B")

BASIS OF PAYMENT:

THE BUTT JOINT WILL BE PAID FOR AT THE CONTRACT UNIT PRICE PER SQUARE YARD (SQUARE METER) FOR "HOT-MIX ASPHALT SURFACE REMOVAL - BUTT JOINT" OR FOR "PORTLAND CEMENT CONCRETE SURFACE REMOVAL - BUTT JOINT".

ALL DIMENSIONS ARE IN INCHES (MILLIMETERS) UNLESS OTHERWISE SHOWN.

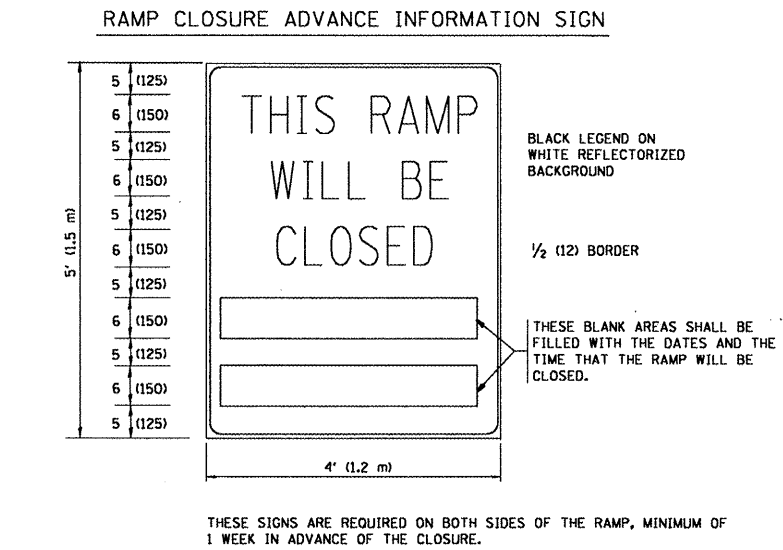
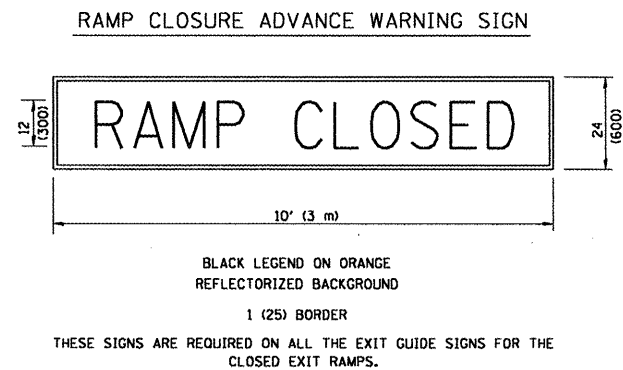
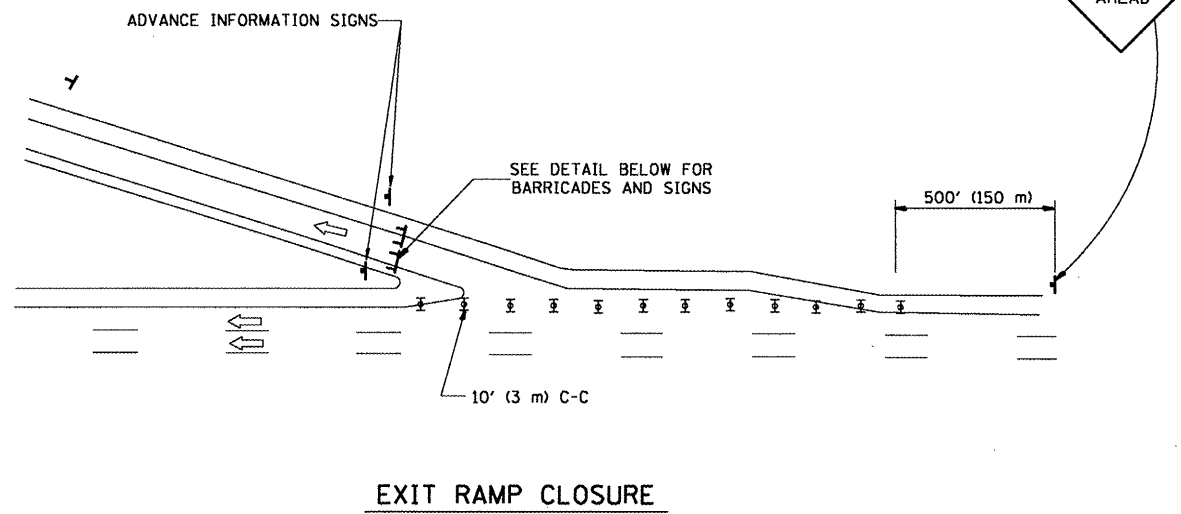
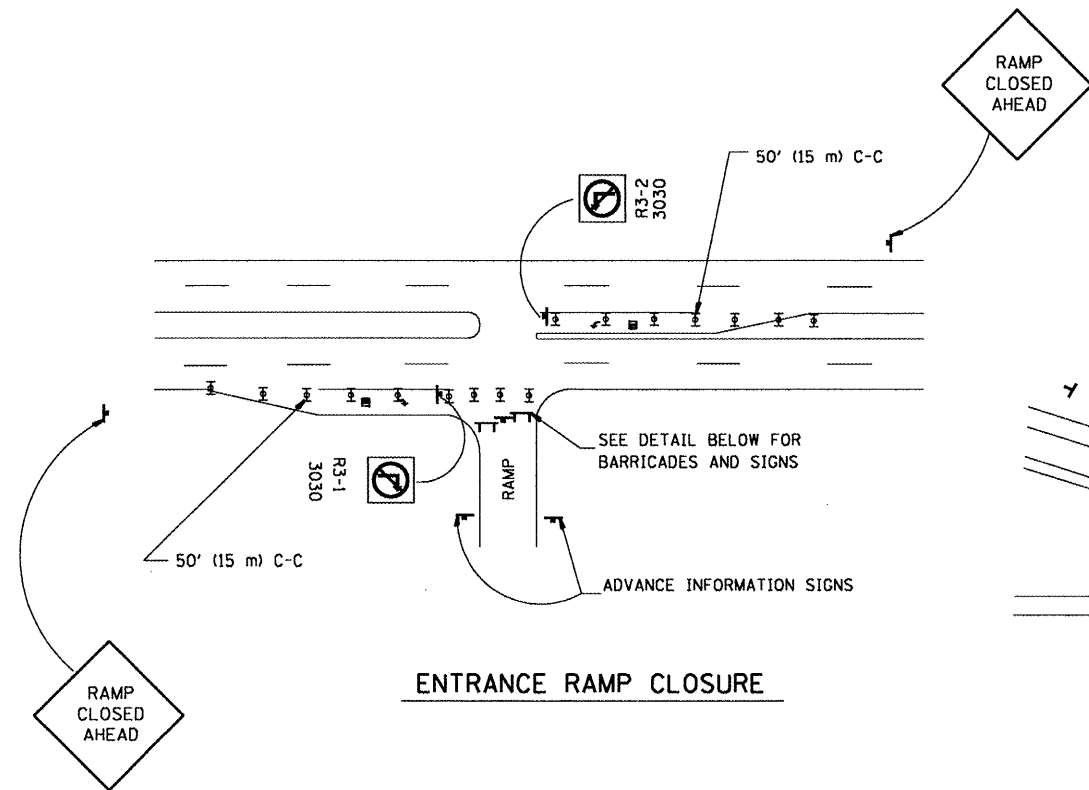
FILE NAME =	USER NAME = sm:thkl	DESIGNED - M. DE YONG	REVISED - R. SHAH 10-25-94
DETAILS\bd32.dgn		DRAWN -	REVISED - A. ABBAS 03-21-97
PLOT SCALE = 99.9998' / IN.		CHECKED -	REVISED - M. GOMEZ 04-06-01
PLOT DATE = 6/24/2008		DATE - 06-13-90	REVISED - R. BORO 01-01-07

STATE OF ILLINOIS DEPARTMENT OF TRANSPORTATION

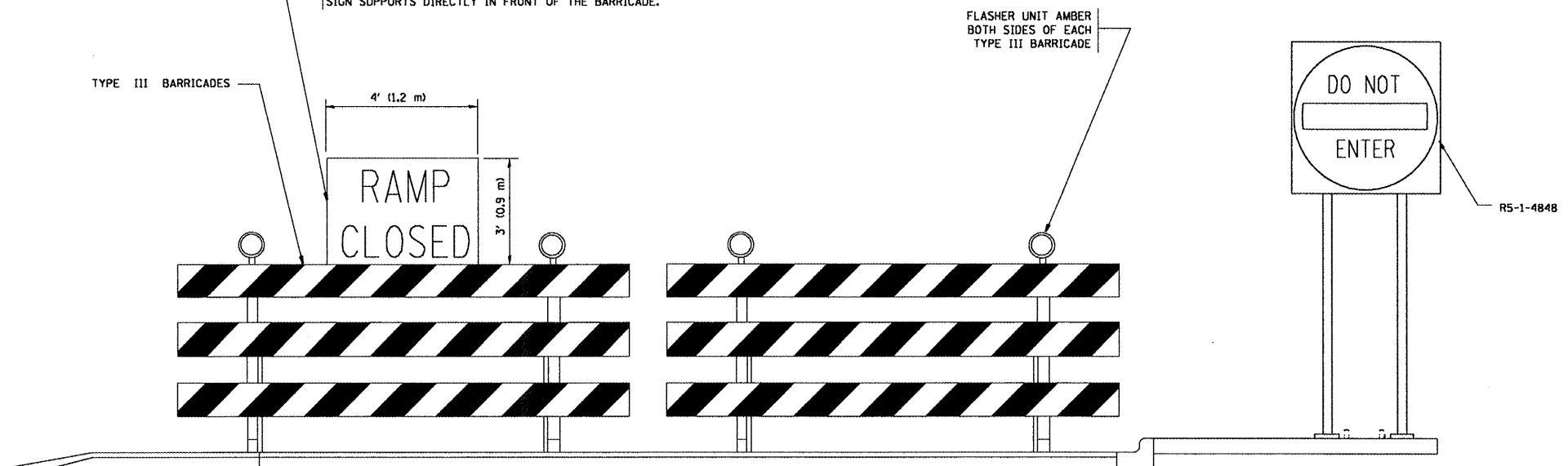
BUTT JOINT AND HMA TAPER DETAILS

SCALE: NONE SHEET NO. 1 OF 1 SHEETS STA. TO STA.

F.A. RTE.	SECTION	COUNTY	TOTAL SHEETS	SHEET NO.
VAR.	2008-050 PP	COOK	18	8
BD400-05 BD32		CONTRACT NO. 60E99		
FED. ROAD DIST. NO. 1 ILLINOIS FED. AID PROJECT				



THE "RAMP CLOSED" SIGN SHALL BE B/W WITH Ø (200) CAPS. IF A TYPE III BARRICADE WITH AN ATTACHED SIGN PANEL WHICH MEETS NCHRP 350 IS NOT AVAILABLE, THE SIGNS MAY BE MOUNTED ON NCHRP 350 TEMPORARY SIGN SUPPORTS DIRECTLY IN FRONT OF THE BARRICADE.



THESE SIGNS ARE REQUIRED ON BOTH SIDES OF THE RAMP, MINIMUM OF 1 WEEK IN ADVANCE OF THE CLOSURE.

GENERAL NOTES:

1. CONES MAY BE SUBSTITUTED FOR DRUMS OR TYPE II BARRICADES DURING DAY OPERATIONS. CONES SHALL BE A MINIMUM OF 28 (700) HIGH.
2. STEADY BURN LIGHTS WILL NOT BE REQUIRED FOR DAY OPERATIONS.
3. A FLAGGER SHALL BE POSITIONED AT EACH CLOSED RAMP THAT IS OPEN TO CONSTRUCTION VEHICLES.
4. ALL ROUTE MARKERS AND TRAILBLAZER ASSEMBLIES WHICH DIRECT MOTORISTS TO A CLOSED ENTRANCE RAMP SHALL BE COVERED.
5. THE SIGNING AND BARRICADING WHICH IS REQUIRED BY THIS DETAIL SHALL BE INCLUDED IN THE COST OF TRAFFIC CONTROL AND PROTECTION (EXPRESSWAYS).
6. AUTHORIZATION FROM THE DISTRICT'S BUREAU OF TRAFFIC IS REQUIRED FOR ALL RAMP CLOSURES.
7. THE RAMP CLOSURE ADVANCE INFORMATION SIGNS SHALL BE ERECTED IF THE CLOSURE TIME EXCEEDS TWENTY-FOUR (24) HOURS. ADDITIONAL ADVANCE WARNING SIGNS ON EXIT GUIDE SIGNING WILL BE REQUIRED FOR EXIT RAMP CLOSURES THAT EXCEED TWENTY FOUR (24) HOURS IN LENGTH.

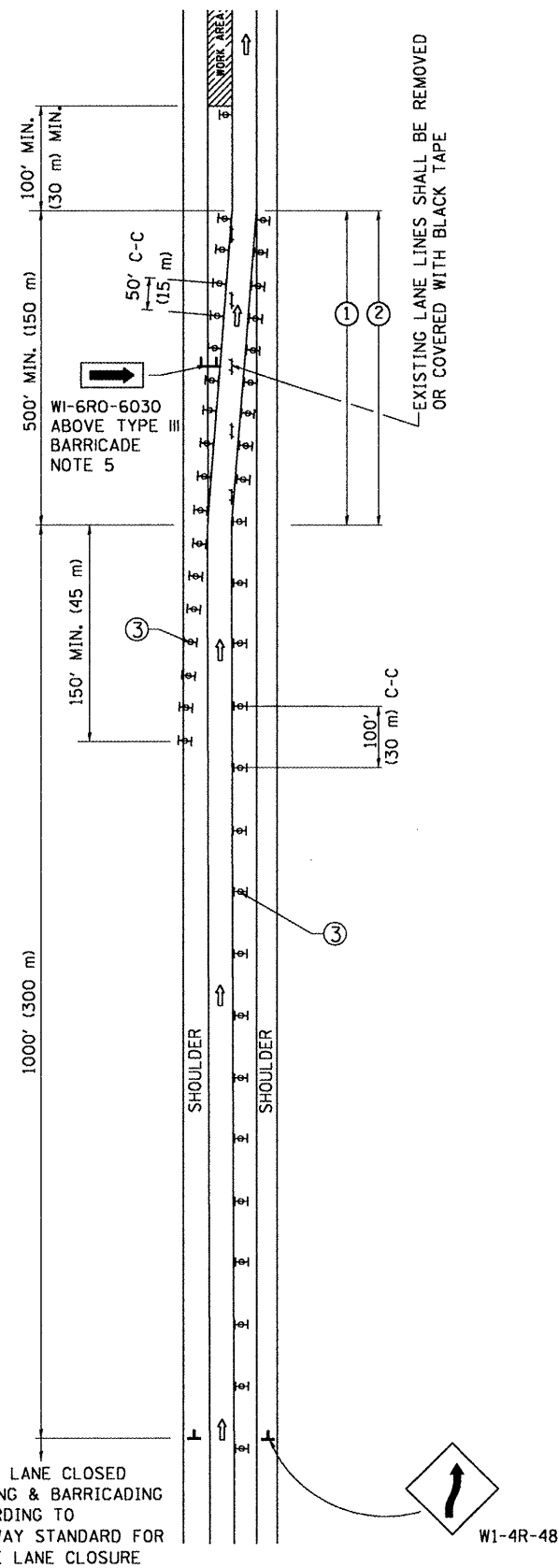
ALL DIMENSIONS ARE IN INCHES (MILLIMETERS) UNLESS OTHERWISE SHOWN.

SYMBOLS

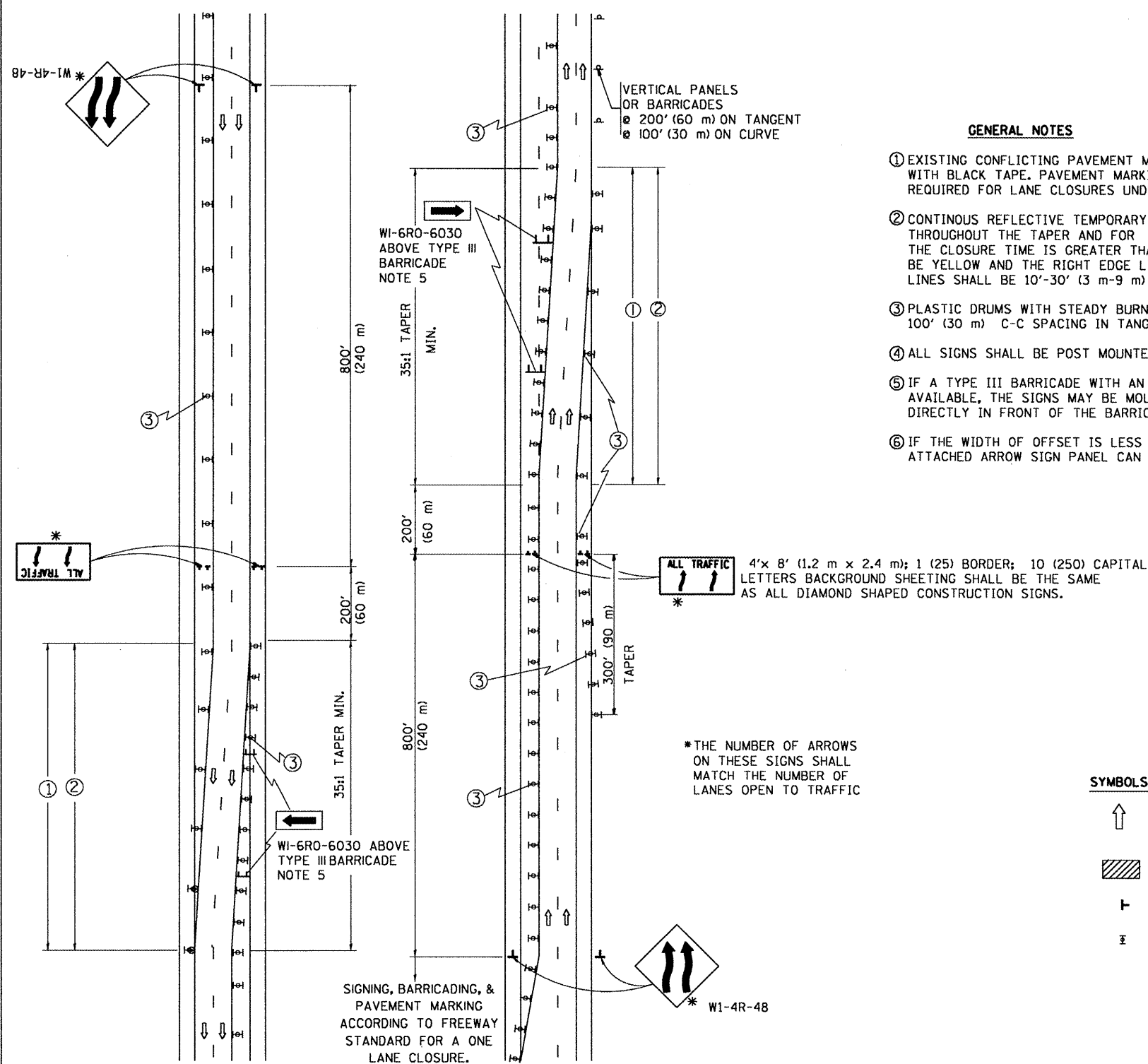
- ⊞ TYPE II BARRICADE, DRUM OR VERTICAL BARRICADE WITH STEADY BURN MONO-DIRECTIONAL LIGHT
- ⊞ TYPE III BARRICADE WITH FLASHING LIGHT

FILE NAME = \\dist\inf\sa2\users\smthkl\Desktop\CADD	USER NAME = smthkl	DESIGNED - DWS	REVISED - DWS 12-94	STATE OF ILLINOIS DEPARTMENT OF TRANSPORTATION	FREWAY ENTRANCE AND EXIST RAMP CLOSURE DETAILS		F.A. RTE. *	SECTION	COUNTY	TOTAL SHEETS	SHEET NO.	
	DETAILS\sc08.dgn	DRAWN -	REVISED - DWS/JAF 12-02		SCALE: NONE	SHEET NO. 1 OF 1 SHEETS	STA.	VAR.	2008-050 PP	COOK	18	9
	PLOT SCALE = 100.000' / IN.	CHECKED -	REVISED - JAF 02-06					TC-08		CONTRACT NO. 60E99		
	PLOT DATE = 6/24/2008	DATE - 02-83	REVISED - SPB 01-07					FED. ROAD DIST. NO. 1 [ILLINOIS] FED. AID PROJECT				

SINGLE LANE WEAVE



MULTI-LANE WEAVE



GENERAL NOTES

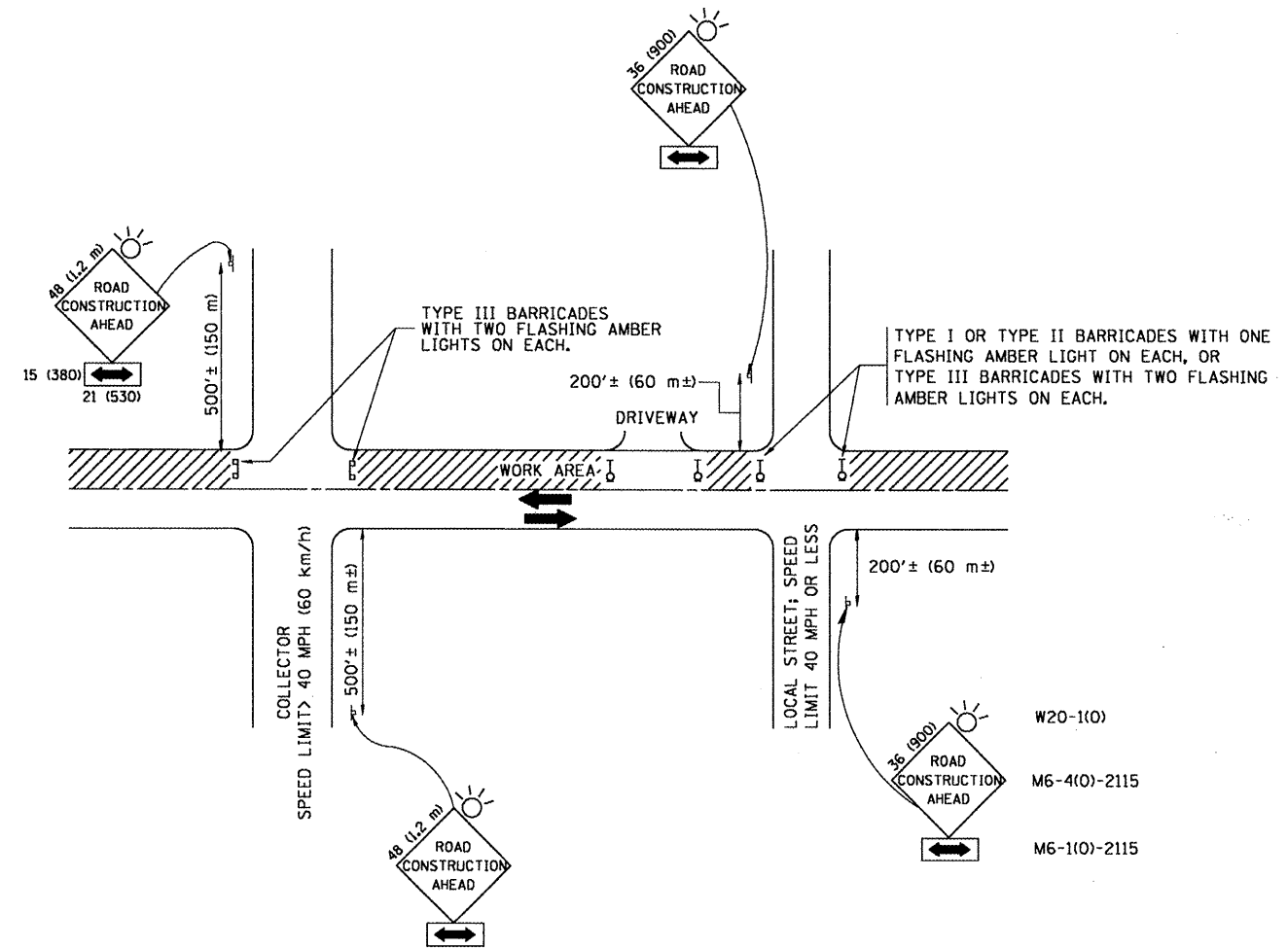
- ① EXISTING CONFLICTING PAVEMENT MARKING LINES SHALL BE REMOVED OR COVERED WITH BLACK TAPE. PAVEMENT MARKING REMOVAL OR BLACK TAPE SHALL NOT BE REQUIRED FOR LANE CLOSURES UNDER 24 HOURS IN DURATION.
- ② CONTINUOUS REFLECTIVE TEMPORARY PAVEMENT MARKING TAPE SHALL BE PLACED THROUGHOUT THE TAPER AND FOR 300' (90 m) ALONG SIDE THE WORK AREA WHERE THE CLOSURE TIME IS GREATER THAN FOURTEEN DAYS. THE LEFT EDGE LINE SHALL BE YELLOW AND THE RIGHT EDGE LINE SHALL BE WHITE. FOR MULTI-LANE WEAVE LANE LINES SHALL BE 10'-30' (3 m-9 m) SKIP DASH, WHITE.
- ③ PLASTIC DRUMS WITH STEADY BURN LIGHTS AT 50' (15 m) C-C SPACING IN TAPERS AND 100' (30 m) C-C SPACING IN TANGENTS.
- ④ ALL SIGNS SHALL BE POST MOUNTED IF THE CLOSURE TIME EXCEEDS FOUR DAYS.
- ⑤ IF A TYPE III BARRICADE WITH AN ATTACHED SIGN PANEL WHICH MEETS NCHRP 350 IS NOT AVAILABLE, THE SIGNS MAY BE MOUNTED ON NCHRP 350 TEMPORARY SIGN SUPPORTS DIRECTLY IN FRONT OF THE BARRICADE.
- ⑥ IF THE WIDTH OF OFFSET IS LESS THAN 6' THEN THE TYPE III BARRICADE WITH ATTACHED ARROW SIGN PANEL CAN BE ELIMINATED IN THE TAPER AREAS.

SYMBOLS

- ↑ DIRECTION OF TRAFFIC
- ▨ WORK AREA
- ┆ SIGN ON PORTABLE OR PERMANENT SUPPORT
- ⊚ TYPE II BARRICADE, DRUM OR VERTICAL BARRICADE WITH MONO-DIRECTIONAL STEADY BURNING LIGHT

ALL DIMENSIONS ARE IN INCHES (MILLIMETERS) UNLESS OTHERWISE SHOWN

FILE NAME =	USER NAME = smthkl	DESIGNED - DWS	REVISED - DWS 11-96	STATE OF ILLINOIS DEPARTMENT OF TRANSPORTATION	TRAFFIC CONTROL DETAILS FOR FREEWAY SINGLE & MULTI-LANE WEAVE			F.A. RTE.	SECTION	COUNTY	TOTAL SHEETS	SHEET NO.
DETAILS\to09.dgn	DRAWN -	REVISED - JAF 01-03	REVISED - JAF 02-06		VAR.	2008-050 PP	COOK	18	10			
PLOT SCALE = 1/8" = 1' IN.	CHECKED -	REVISED - JAF 02-06	REVISED - SPB 01-07		TC-09			CONTRACT NO. 60E99				
PLOT DATE = 6/24/2008	DATE - 02-07	REVISED -	REVISED -		FED. ROAD DIST. NO. 1 ILLINOIS FED. AID PROJECT							
SCALE: NONE				SHEET NO. 1 OF 1 SHEETS			STA. TO STA.					



TRAFFIC CONTROL AND PROTECTION FOR SIDE ROADS, INTERSECTIONS, AND DRIVEWAYS

NOTES:

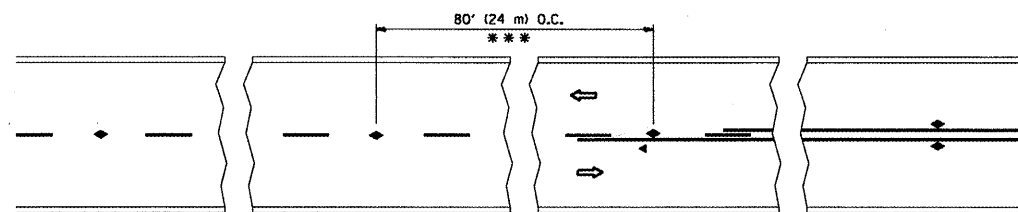
- A. FOR NO LANE RESTRICTION ON THE SIDE ROAD OR DRIVEWAYS
 1. SIDE ROAD WITH A SPEED LIMIT OF 40 MPH (60 km/h) OR LESS AS SHOWN ON THE DRAWING AND AS DIRECTED BY THE ENGINEER:
 - a) ONE ROAD CONSTRUCTION AHEAD SIGN 36 x 36 (900x900) WITH A FLASHER AND FLAG MOUNTED ON IT APPROXIMATELY 200' (60 m) IN ADVANCE OF THE MAIN ROUTE.
 - b) THE CLOSED PORTION OF THE MAIN ROUTE SHALL BE PROTECTED BY BLOCKING WITH TYPE I, TYPE II OR TYPE III BARRICADES, 1/3 OF THE CROSS SECTION OF THE CLOSED PORTION.
 2. SIDE ROAD WITH A SPEED LIMIT GREATER THAN 40 MPH (60 km/h) AS SHOWN ON THE DRAWING AND AS DIRECTED BY THE ENGINEER:
 - a) ONE ROAD CONSTRUCTION AHEAD SIGN 48 x 48 (1.2 m x 1.2 m) WITH A FLASHER MOUNTED ON IT APPROXIMATELY 500' (150 m) IN ADVANCE OF THE MAIN ROUTE.
 - b) THE CLOSED PORTION OF THE MAIN ROUTE SHALL BE PROTECTED BY BLOCKING WITH TYPE III BARRICADES, 1/2 OF THE CROSS SECTION OF THE CLOSED PORTION.
- 3. WHEN THE SIDE ROAD LIES BETWEEN THE BEGINNING OF THE MAINLINE SIGNING AND THE WORK ZONE, A SINGLE HEADED ARROW (M6-1) SHALL BE USED IN LIEU OF THE DOUBLE HEADED ARROW (M6-4).
- B. FOR A LANE CLOSURE ON A SIDE ROAD OR DRIVEWAY:

USE APPLICABLE PORTIONS OF THE TYPICAL APPLICATION OF TRAFFIC CONTROL DEVICES (STD. 701501, STD. 701606 OR THE APPROPRIATE STANDARD). THE SPACING OF SIGNS AND BARRICADES SHALL BE ADJUSTED FOR FIELD CONDITIONS AS DIRECTED BY THE ENGINEER. THE DIRECTIONAL ARROW SHALL BE COVERED OR REMOVED WHEN NO LONGER CONSISTENT WITH THE SIDE ROAD LANE CLOSURE.

 - C. ADVANCE WARNING SIGNS ARE TO BE OMITTED ON DRIVEWAY UNLESS OTHERWISE NOTED.
 - D. THE TRAFFIC CONTROL AND PROTECTION FOR SIDE ROADS, INTERSECTIONS, AND DRIVEWAYS SHALL BE INCIDENTAL TO THE COST OF SPECIFIED TRAFFIC CONTROL STANDARDS OR ITEMS.

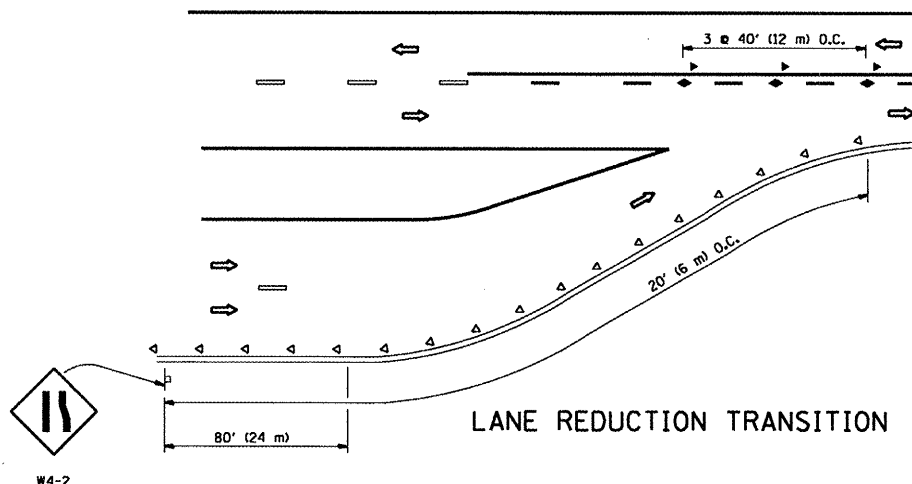
All dimensions are in millimeters (Inches) unless otherwise shown.

FILE NAME =	USER NAME = smithk1	DESIGNED - LHA	REVISED - J. OBERLE 10-18-95	STATE OF ILLINOIS DEPARTMENT OF TRANSPORTATION	TRAFFIC CONTROL AND PROTECTION FOR SIDE ROADS, INTERSECTIONS, AND DRIVEWAYS	F.A. RTE.	SECTION	COUNTY	TOTAL SHEETS	SHEET NO.
DETAILS\sv\td0.dgn	DRAWN -	REVISED - A. HOUSEH 03-06-96	VAR.			2008-050 PP	COOK	18	11	
PLOT SCALE = 100.000' / IN.	CHECKED -	REVISED - A. HOUSEH 10-15-96	TC-10			CONTRACT NO. 60E99				
PLOT DATE = 6/24/2008	DATE - 06-89	REVISED - T. RAMMACHER 01-06-00	SCALE: NONE			SHEET NO. 1 OF 1 SHEETS	STA.	TO STA.	FED. ROAD DIST. NO. 1 ILLINOIS FED. AID PROJECT	

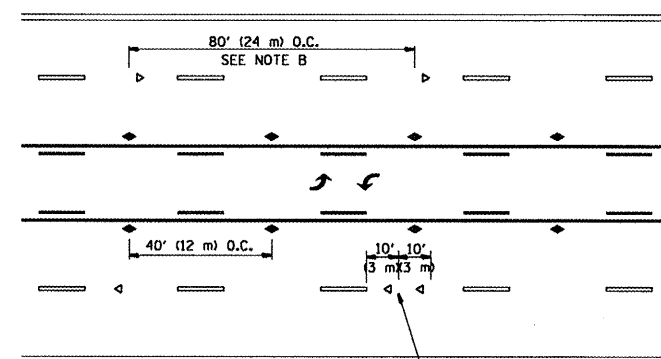


*** REDUCE TO 40' (12 m) O.C. ON CURVES WITH POSTED OR ADVISORY SPEED 45 M.P.H. (70 km/h) OR LESS.

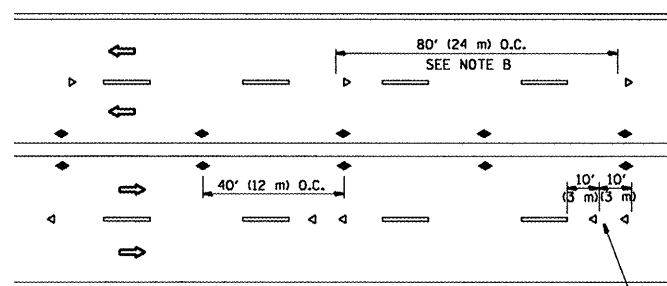
TWO-LANE/TWO-WAY



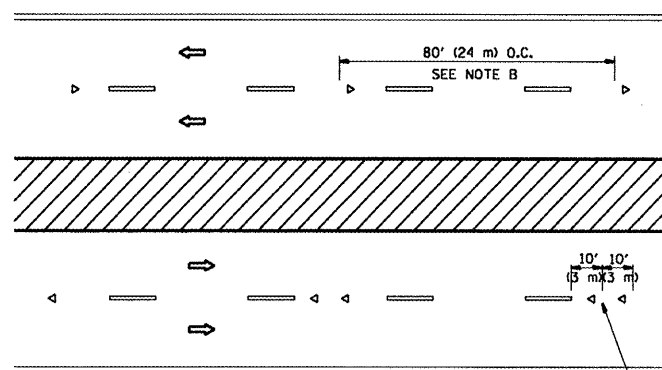
LANE REDUCTION TRANSITION



TWO-WAY LEFT TURN



MULTI-LANE/UNDIVIDED



MULTI-LANE/DIVIDED

GENERAL NOTES

1. MARKERS USED WITH DASHED LINES SHALL BE CENTERED IN THE GAP BETWEEN SEGMENTS.
2. MARKERS USED ADJACENT TO SOLID LINES SHALL BE OFFSET 2 TO 3 (50 TO 75) TOWARD TRAFFIC AS SHOWN.
3. MARKERS THROUGH TANGENTS LESS THAN 500' (150 m) IN LENGTH BETWEEN CURVES SHALL BE INSTALLED AT THE LESSER OF THE TWO CURVE SPACINGS.

SYMBOLS

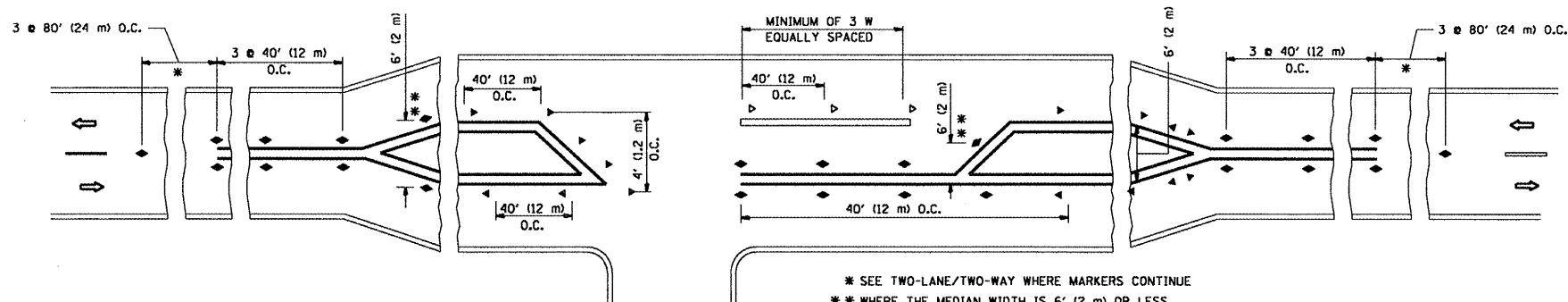
- YELLOW STRIPE
- WHITE STRIPE
- ◀ ONE-WAY AMBER MARKER
- ◀ ONE-WAY CRYSTAL MARKER (W/O)
- ◆ TWO-WAY AMBER MARKER

LANE MARKER NOTES

- A. USE DOUBLE LANE LINE MARKERS SPACED AS SHOWN.
- B. REDUCE TO 40' (12 m) O.C. ON CURVES WHERE ADVISORY SPEEDS ARE 10 M.P.H. (20 km/h) LOWER THAN POSTED SPEEDS.

DESIGN NOTES

1. DOUBLE LANE LINE MARKERS SHALL BE USED UNLESS SPECIFIED OTHERWISE.
2. EXCEPT AS SHOWN ON THE LANE REDUCTION TRANSITION AND FREEWAY EXIT RAMP DETAIL, MARKERS ARE NOT TO BE SPECIFIED ON RIGHT EDGE LINES.
3. THE EXACT MARKER LIMITS, SPACING, AND COLOR SHOULD BE INCLUDED IN THE PLANS.
4. MARKERS SHOULD NOT BE USED ALONGSIDE CURBS EXCEPT FOR EXTREMELY SHORT SECTIONS OF CURBS WHERE NOT MORE THAN TWO MARKERS WOULD BE INVOLVED.



LEFT TURN

* SEE TWO-LANE/TWO-WAY WHERE MARKERS CONTINUE
 ** WHERE THE MEDIAN WIDTH IS 6' (2 m) OR LESS USE TWO-WAY MARKERS.

All dimensions are in inches (millimeters) unless otherwise shown.

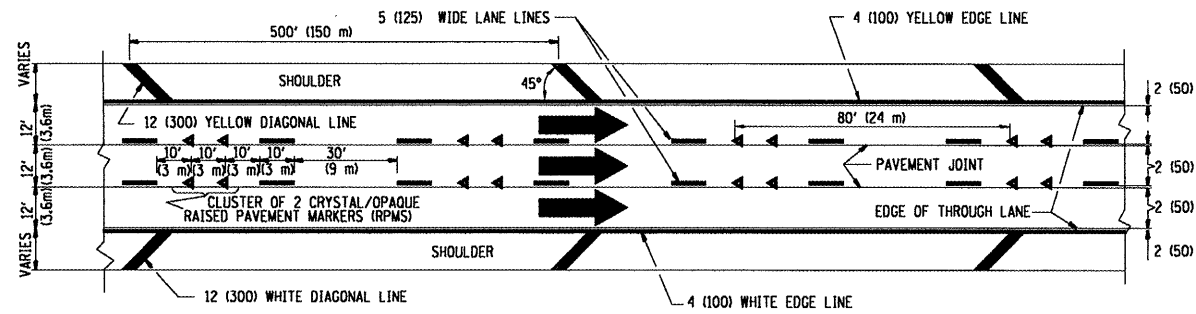
STATE OF ILLINOIS
 DEPARTMENT OF TRANSPORTATION

TYPICAL APPLICATIONS
 RAISED REFLECTIVE PAVEMENT MARKERS (SNOW-PLOW RESISTANT)

F.A. RTE.	SECTION	COUNTY	TOTAL SHEETS	SHEET NO.
VAR.	2008-050 PP	COOK	78	12
TC-11			CONTRACT NO. 60E99	
FED. ROAD DIST. NO. 1 ILLINOIS FED. AID PROJECT				

FILE NAME =	USER NAME = sm1 thkl	DESIGNED -	REVISED - T. RAMMACHER 09-19-94
\\dist1\ntfs2\users\sm1 thkl\Desktop\CADD	DETAILS\to11.dgn	DRAWN -	REVISED - T. RAMMACHER 03-12-99
	PLOT SCALE = 100.000 / IN.	CHECKED -	REVISED - T. RAMMACHER 01-06-00
	PLOT DATE = 6/24/2008	DATE -	REVISED -

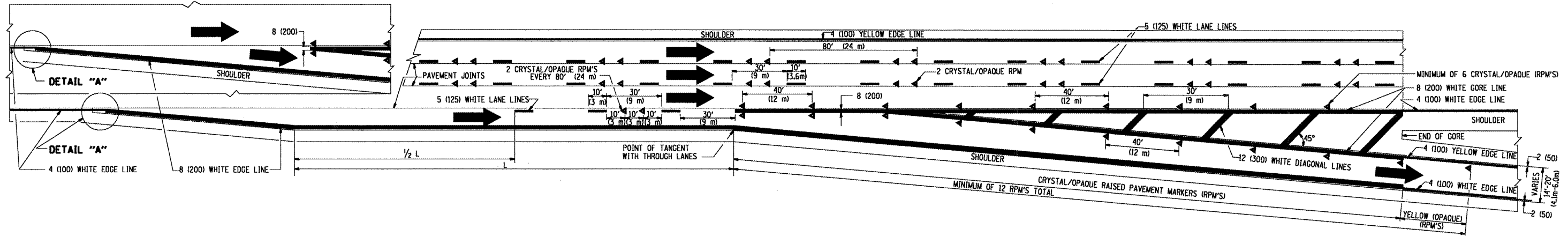
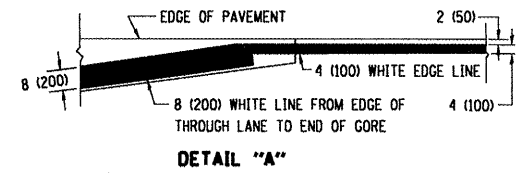
THE DIAGONAL LINES SHALL BE SPACED AT 40' (12 m) C-C ACROSS ALL STRUCTURES WHICH ARE 500' (150 m) OR LESS IN LENGTH
 THE DIAGONAL LINES ARE NOT REQUIRED ON SHOULDERS WHICH ARE 6' (1.8 m) OR LESS IN WIDTH



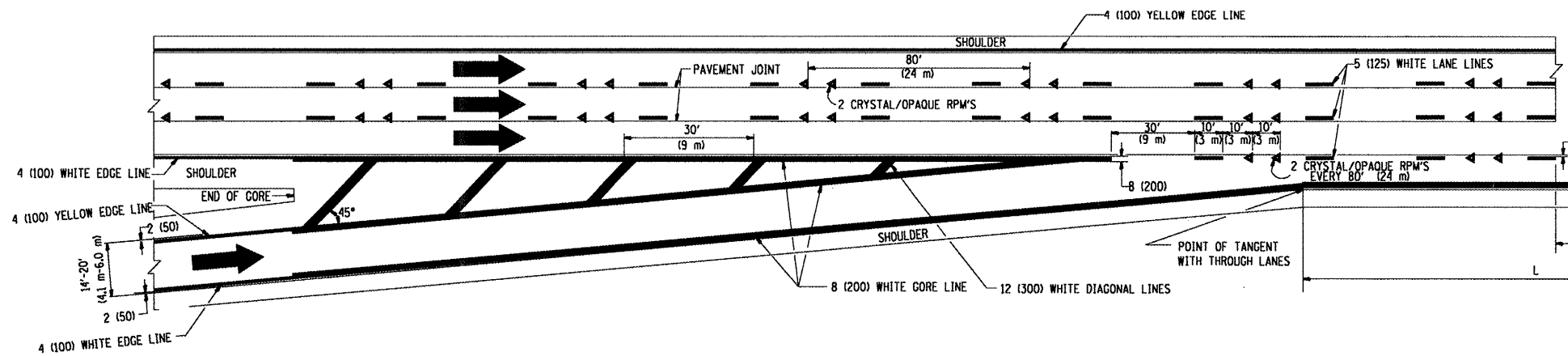
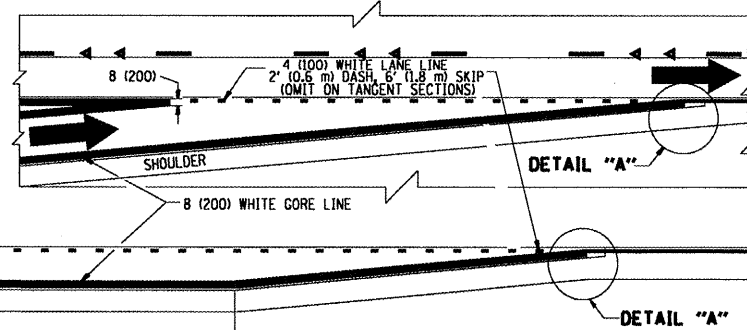
TYPICAL EDGE LINES & LANE LINES

NOTES:

1. THERMO PLASTIC PAVEMENT MARKING LINE SHALL BE USED FOR THE EDGE LINES, GORE LINES, AND DIAGONAL LINES ON BITUMINOUS PAVEMENT ONLY.
2. PREFORMED PLASTIC TYPE B PAVEMENT MARKING LINE SHALL BE USED FOR ALL LANE LINES ON BITUMINOUS PAVEMENT
3. POLYUREA PAVEMENT MARKING SHALL BE USED FOR ALL MARKINGS ON PCC

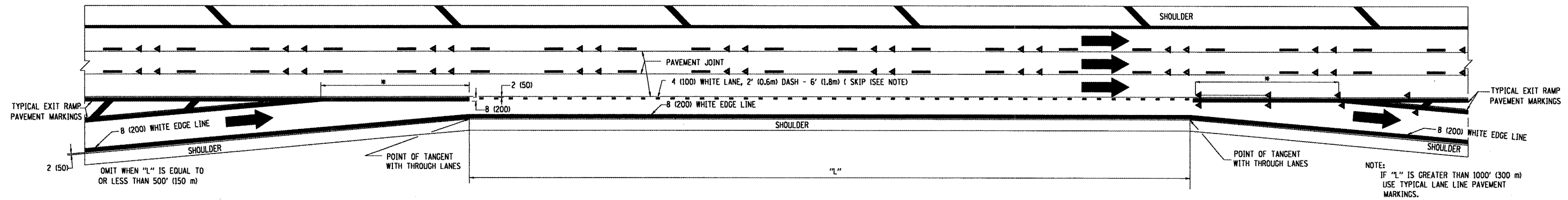


TYPICAL EXIT RAMP PAVEMENT MARKINGS

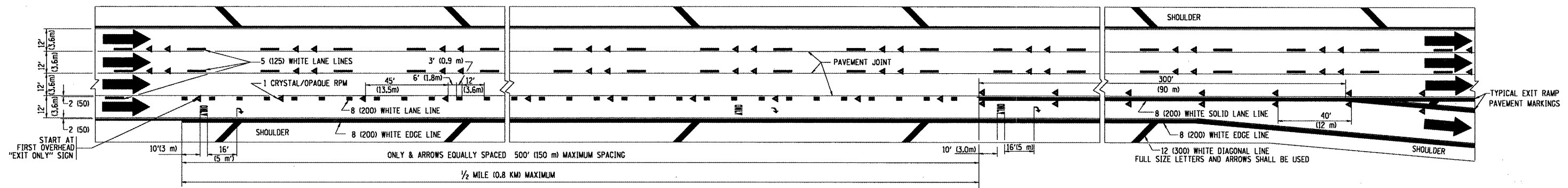


TYPICAL ENTRANCE RAMP PAVEMENT MARKINGS

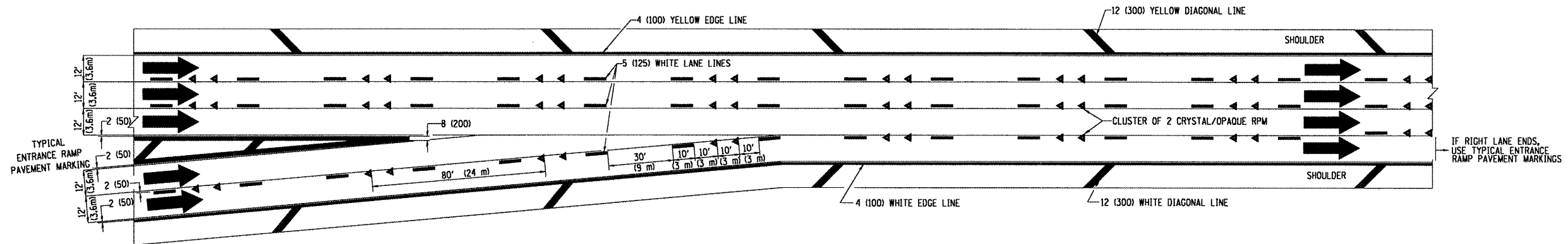
FILE NAME =	USER NAME = smthkl	DESIGNED - D.W.S.	REVISED - A.H. 03-96	STATE OF ILLINOIS DEPARTMENT OF TRANSPORTATION	MULTI-LANE FREEWAY PAVEMENT MARKING DETAILS			F.A. RTE.	SECTION	COUNTY	TOTAL SHEETS	SHEET NO.	
\\dist\ntfs2\user\smthkl\Desktop\CADD	DETAILS\tc12.dgn	DRAWN -	REVISED - D.W.S. 07-96		SCALE: NONE	SHEET NO. 1 OF 2 SHEETS	STA.	TO STA.	VAR.	2008-050 PP	COOK	18	13
PLOT SCALE = 1/8"=1'-0"	PLOT DATE = 6/24/2008	CHECKED -	REVISED - J.A.F. 02-06					TC-12		CONTRACT NO. 60E99			
		DATE - 01-90	REVISED - S.P.B. 01-07					FED. ROAD DIST. NO. 1 ILLINOIS FED. AID PROJECT					



TYPICAL ENTRANCE/EXIT RAMP COMBINATION PAVEMENT MARKINGS

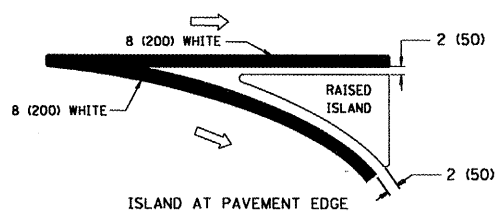
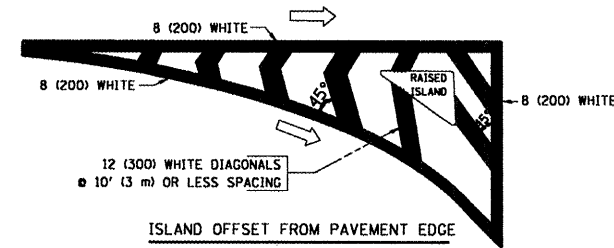
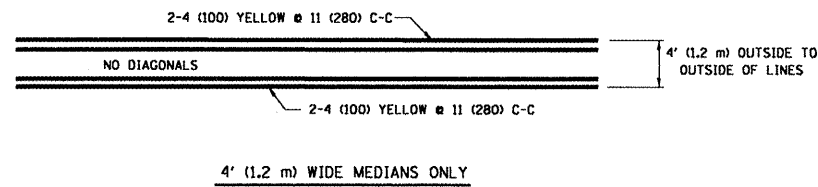
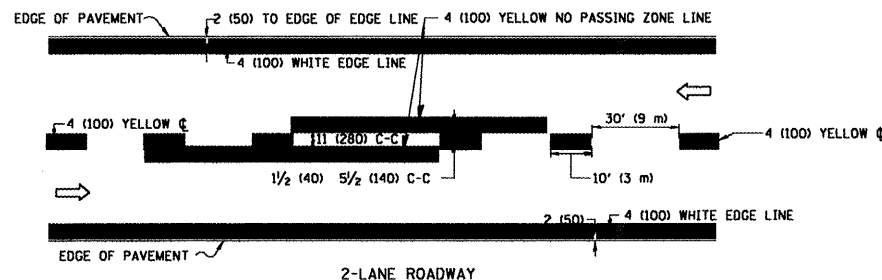


TYPICAL EXIT ONLY LANE PAVEMENT MARKINGS

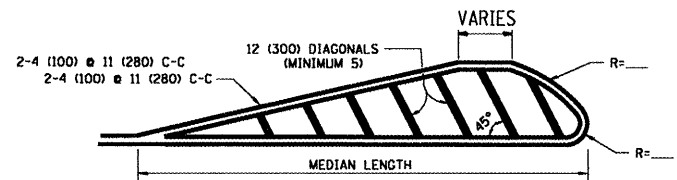
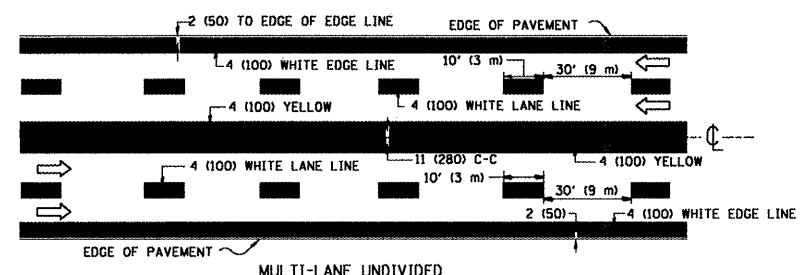


TYPICAL TWO LANE ENTRANCE RAMP PAVEMENT MARKINGS

FILE NAME =	USER NAME = smthkl	DESIGNED - D.W.S.	REVISED - A.H. 03-96	STATE OF ILLINOIS DEPARTMENT OF TRANSPORTATION	MULTI-LANE FREEWAY PAVEMENT MARKING DETAILS			F.A. -	SECTION	COUNTY	TOTAL SHEETS	SHEET NO.
DETAILS\to12.dgn	DRAWN -	REVISED - D.W.S. 07-96	REVISED - J.A.F. 02-06		SCALE: NONE	SHEET NO. 1 OF 2 SHEETS	STA.	VAR.	2008-050 PP	COOK	18	14
PLOT SCALE = 100.000' / IN.	CHECKED -	REVISED - S.P.B. 01-07			TO STA.			TC-12		CONTRACT NO. 60E99		
PLOT DATE = 6/24/2008	DATE - 01-90				FED. ROAD DIST. NO. 1 ILLINOIS FED. AID PROJECT							

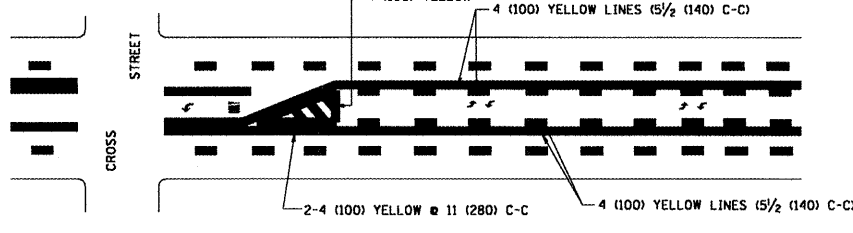


TYPICAL ISLAND MARKING

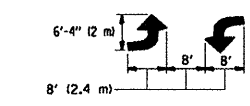


FOR MEDIAN LENGTHS WHERE DIAGONAL SPACING CANNOT BE ATTAINED, USE 5 (FIVE) EQUALLY SPACED DIAGONAL LINES.
 DIAGONAL LINE SPACING: 50' (15 m) C-C (LESS THAN 30MPH (50 km/h))
 75' (25 m) C-C (30MPH (50 km/h) TO 45MPH (70 km/h))
 150' (45 m) C-C (MORE THAN 45MPH (70 km/h))

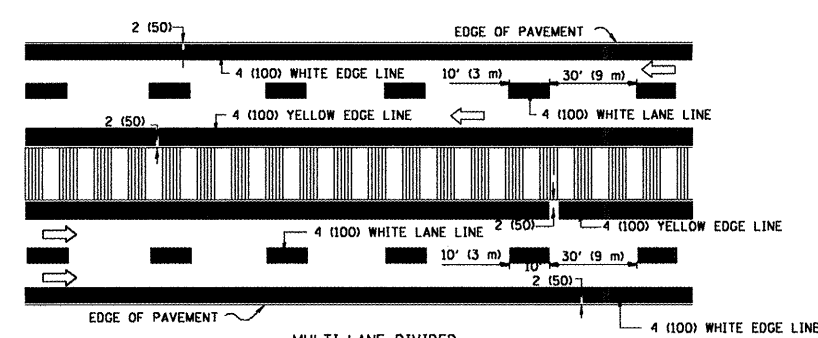
MEDIANS OVER 4' (1.2 m) WIDE



A MINIMUM OF TWO PAIRS OF TURN ARROWS SHALL BE USED, WHITE IN COLOR. ADDITIONAL PAIRS SHALL BE PLACED AT 200' (60 m) TO 300' (90 m) INTERVALS.

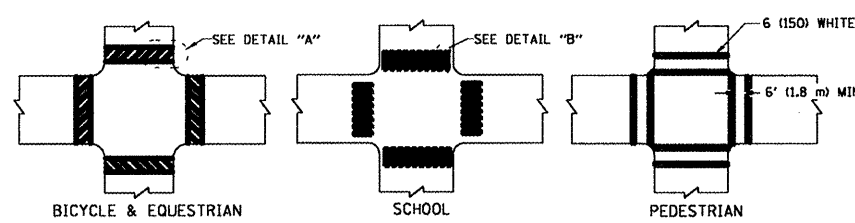


TYPICAL PAINTED MEDIAN MARKING

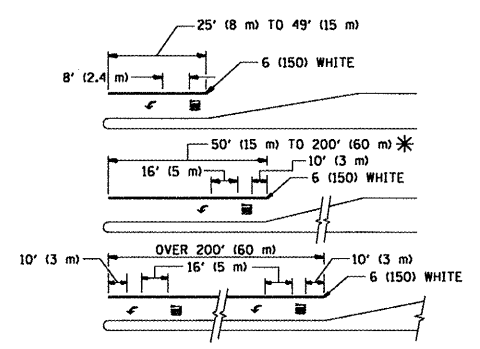


NOTE: MEDIANS WITH BARRIER CURB DO NOT REQUIRE AN EDGE LINE

TYPICAL LANE AND EDGE LINE MARKING



TYPICAL CROSSWALK MARKING



FULL SIZE LETTERS 8' (2.4 m) AND ARROWS SHALL BE USED.
 * TURN LANES IN EXCESS OF 400' (120 m) IN LENGTH MAY HAVE AN ADDITIONAL SET OF ARROW - "ONLY" INSTALLED MIDWAY BETWEEN THE OTHER TWO SETS OF ARROW - "ONLY".

TYPICAL LEFT (OR RIGHT) TURN LANE

TYPE OF MARKING	WIDTH OF LINE	PATTERN	COLOR	SPACING / REMARKS
CENTERLINE ON 2 LANE PAVEMENT	4 (100)	SKIP-DASH	YELLOW	10' (3 m) LINE WITH 30' (9 m) SPACE
CENTERLINE ON MULTI-LANE UNDIVIDED PAVEMENT	2 @ 4 (100)	SOLID	YELLOW	11 (280) C-C
NO PASSING ZONE LINES: FOR ONE DIRECTION FOR BOTH DIRECTIONS	4 (100) 2 @ 4 (100)	SOLID SOLID	YELLOW YELLOW	5/2 (140) C-C FROM SKIP-DASH CENTERLINE 11 (280) C-C OMIT SKIP-DASH CENTERLINE BETWEEN
LANE LINES	4 (100) 5 (125) ON FREEWAYS	SKIP-DASH SKIP-DASH	WHITE WHITE	10' (3 m) LINE WITH 30' (9 m) SPACE
DOTTED LINES (EXTENSIONS OF CENTER, LANE OR TURN LANE MARKINGS)	SAME AS LINE BEING EXTENDED	SKIP-DASH	SAME AS LINE BEING EXTENDED	2' (600) LINE WITH 6' (1.8 m) SPACE
EDGE LINES	4 (100)	SOLID	YELLOW-LEFT WHITE-RIGHT	OUTLINE MOUNTABLE MEDIANS IN YELLOW; EDGE LINES ARE NOT USED NEXT TO BARRIER CURB
TURN LANE MARKINGS	6 (150) LINE; FULL SIZE LETTERS & SYMBOLS (8' (2.4m))	SOLID	WHITE	SEE TYPICAL TURN LANE MARKING DETAIL
TWO WAY LEFT TURN MARKING	2 @ 4 (100) EACH DIRECTION 8' (2.4m) LEFT ARROW	SKIP-DASH AND SOLID IN PAIRS	YELLOW WHITE	10' (3 m) LINE WITH 30' (9 m) SPACE FOR SKIP-DASH; 5/2 (140) C-C BETWEEN SOLID LINE AND SKIP-DASH LINE SEE TYPICAL TWO-WAY LEFT TURN MARKING DETAIL
CROSSWALK LINES (PEDESTRIAN) A. DIAGONALS (BIKE & EQUESTRIAN) B. LONGITUDINAL BARS (SCHOOL)	2 @ 6 (150) 12 (300) @ 45° 12 (300) @ 90°	SOLID SOLID SOLID	WHITE WHITE WHITE	NOT LESS THAN 6' (1.8 m) APART 2' (600) APART 2' (600) APART SEE TYPICAL CROSSWALK MARKING DETAILS.
STOP LINES	24 (600)	SOLID	WHITE	PLACE 4' (1.2 m) IN ADVANCE OF AND PARALLEL TO CROSSWALK, IF PRESENT. OTHERWISE, PLACE AT DESIRED STOPPING POINT. PARALLEL TO CROSSROAD CENTERLINE, WHERE POSSIBLE
PAINTED MEDIANS	2 @ 4 (100) WITH 12 (300) DIAGONALS @ 45° NO DIAGONALS USED FOR 4' (1.2 m) WIDE MEDIANS	SOLID	YELLOW: TWO WAY TRAFFIC WHITE: ONE WAY TRAFFIC	11 (280) C-C FOR THE DOUBLE LINE SEE TYPICAL PAINTED MEDIAN MARKING.
GORE MARKING AND CHANNELIZING LINES	8 (200) WITH 12 (300) DIAGONALS @ 45°	SOLID	WHITE	DIAGONALS: 15' (4.5 m) C-C (LESS THAN 30MPH (50 km/h)) 20' (6 m) C-C (30MPH (50 km/h) TO 45MPH (70 km/h)) 30' (9 m) C-C (OVER 45MPH (70 km/h))
RAILROAD CROSSING	24 (600) TRANSVERSE LINES; "RR" IS 6' (1.8 m) LETTERS; 16 (400) LINE FOR "X"	SOLID	WHITE	SEE STATE STANDARD 780001 AREA OF: "RR"=3.6 SQ. FT. (0.33 m ²) EACH "X"=54.0 SQ. FT. (5.0 m ²)
SHOULDER DIAGONALS	12 (300) @ 45°	SOLID	WHITE - RIGHT YELLOW - LEFT	50' (15 m) C-C (LESS THAN 30MPH (50 km/h)) 75' (25 m) C-C (30 MPH (50 km/h) TO 45MPH (70 km/h)) 150' (45 m) C-C (OVER 45MPH (70 km/h))

FOR FURTHER DETAILS ON PAVEMENT MARKING REFER TO STANDARD SPECIFICATIONS FOR ROAD AND BRIDGE CONSTRUCTION AND STATE STANDARD 780001.

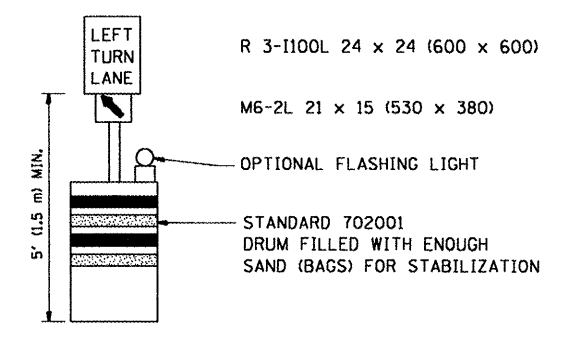
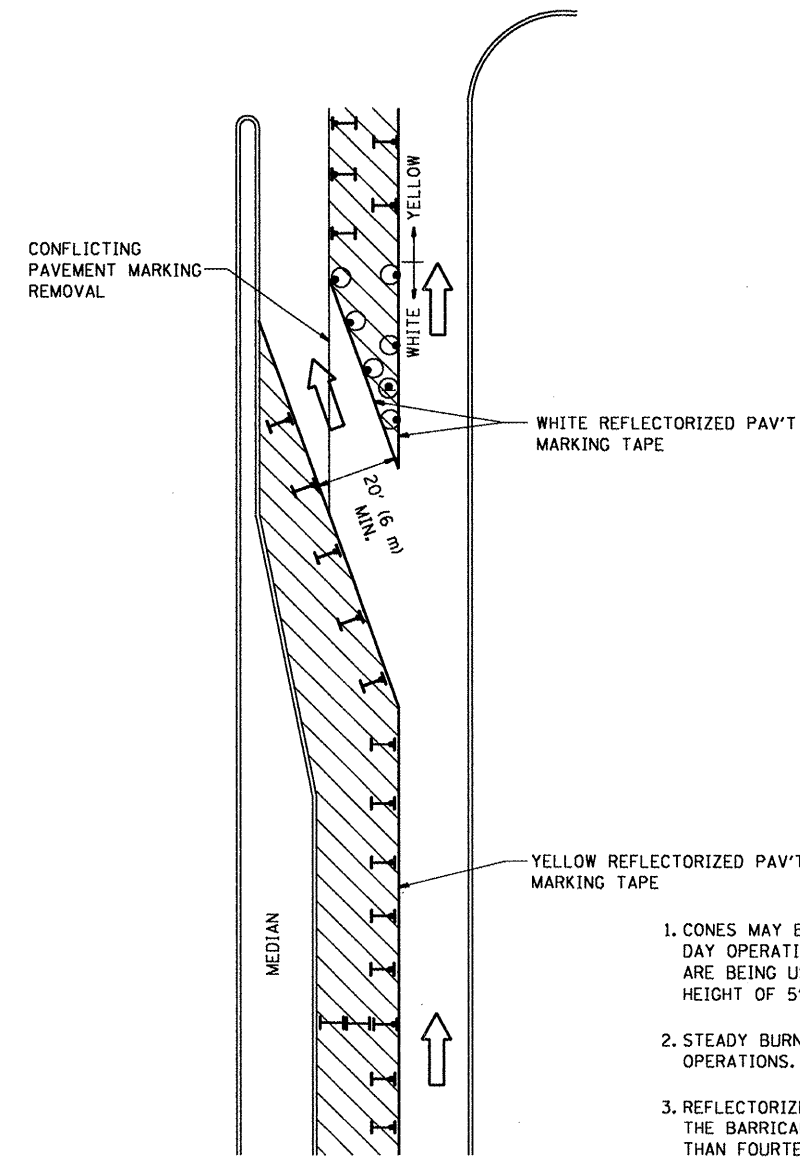
All dimensions are in inches (millimeters) unless otherwise shown.

FILE NAME = \\dist1\ntf2\user\amthk1\Desktop\CADD	USER NAME = amthk1 DETAILS\to13.dgn	DESIGNED - EVERS	REVISED - T. RAMMACHER 10-27-94
	PLOT SCALE = 100.000' / IN.	DRAWN -	REVISED - A. HOUSEH 10-09-96
	PLOT DATE = 6/24/2008	CHECKED -	REVISED - A. HOUSEH 10-17-96
		DATE - 03-19-90	REVISED - T. RAMMACHER 01-06-00

STATE OF ILLINOIS
DEPARTMENT OF TRANSPORTATION

DISTRICT ONE			
TYPICAL PAVEMENT MARKINGS			
SCALE: NONE	SHEET NO. 1 OF 1 SHEETS	STA. TO STA.	


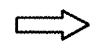
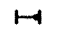


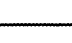
F.A. R.T.E. VAR.	SECTION 2008-050 PP	COUNTY COOK	TOTAL SHEETS 18	SHEET NO. 15
TC-13		CONTRACT NO. 60E99		
FED. ROAD DIST. NO. 1 ILLINOIS FED. AID PROJECT				



GENERAL NOTES

1. CONES MAY BE SUBSTITUTED FOR BARRICADES OR DRUMS AT HALF THE SPACING DURING DAY OPERATIONS. CONES SHALL BE A MINIMUM OF 28 (710) IN HEIGHT. WHEN CONES ARE BEING USED, THE "LEFT TURN LANE" SIGN MAY BE SKID MOUNTED AT A MINIMUM HEIGHT OF 5' (1.5 m).
2. STEADY BURNING LIGHTS WILL NOT BE REQUIRED ON BARRICADES OR DRUMS FOR DAY OPERATIONS. ALL LIGHTS SHALL BE MONODIRECTIONAL.
3. REFLECTORIZED TEMPORARY PAVEMENT MARKING TAPE SHALL BE PLACED THROUGHOUT THE BARRICADED AREA OF EACH TURN BAY WHERE THE CLOSURE TIME IS GREATER THAN FOURTEEN DAYS.
4. THIS APPLICATION ALSO APPLIES WHEN WORK IS BEING PERFORMED IN THE RIGHT LANE(S) AND THE RIGHT TURN BAY IS TO REMAIN OPEN. UNDER THIS CONDITION, "RIGHT TURN LANE" R3-100 24 x 24 (600 x 600) AND M6-2R 21 x 15 (530 x 380) SHALL BE USED.
5. THESE CONTROLS SHALL SUPPLEMENT MAINLINE TRAFFIC CONTROL FOR LANE CLOSURES.
6. LONGITUDINAL DIMENSIONS MAY BE ADJUSTED TO FIT FIELD CONDITIONS.
7. FORM BT 725 IS REQUIRED.
8. TRAFFIC CONTROL AND PROTECTION AT TURN BAYS (TO REMAIN OPEN TO TRAFFIC) SHALL BE INCLUDED IN THE COST SPECIFIED TRAFFIC CONTROL STANDARDS OR ITEMS.

LEGEND

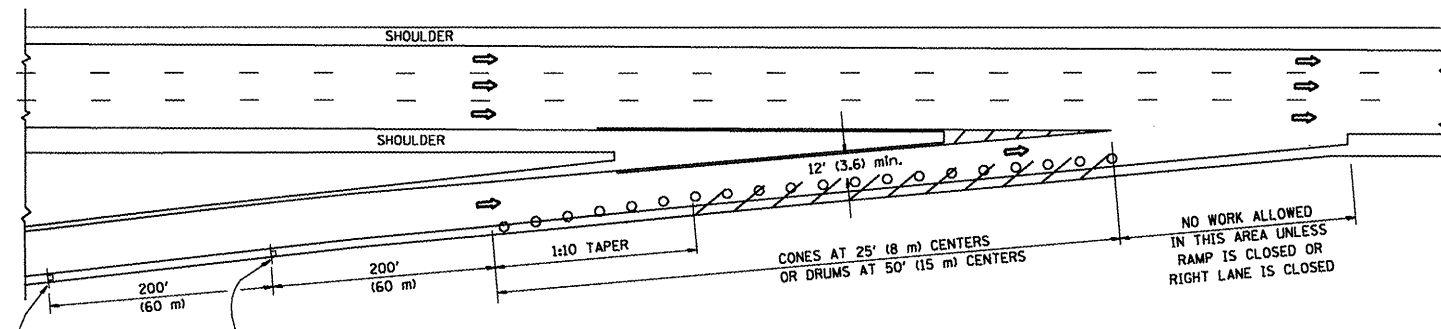
-  WORK AREA
-  LANE OPEN TO TRAFFIC
-  TYPE I OR II BARRICADE WITH STEADY BURN LIGHT
-  DRUM WITH STEADY BURN LIGHT
-  DRUM WITH SIGN (WITH OPTIONAL FLASHING LIGHT) SEE DETAIL
-  TYPE I OR II CHECK BARRICADE WITH FLASHING LIGHT

All dimensions are in inches (millimeters) unless otherwise shown.

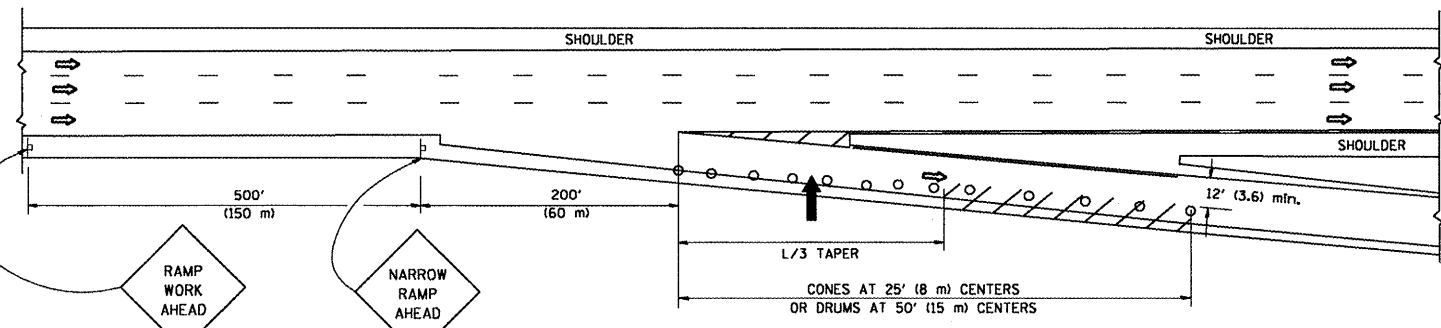
FILE NAME =	USER NAME = smthk1	DESIGNED -	REVISED -T. RAMMACHER 09-08-94	STATE OF ILLINOIS DEPARTMENT OF TRANSPORTATION	TRAFFIC CONTROL AND PROTECTION AT TURN BAYS (TO REMAIN OPEN TO TRAFFIC)	F.A. RTE.	SECTION	COUNTY	TOTAL SHEETS	SHEET NO.
DETAILS\ctc14.dgn	DRAWN -	REVISED - A. HOUSEH 11-07-95	VAR.			2008-050 PP	COOK	18	16	
PLOT SCALE = 99.9998' / IN.	CHECKED -	REVISED - A. HOUSEH 10-12-96	TC-14			CONTRACT NO. 60E99				
PLOT DATE = 6/24/2008	DATE -	REVISED -T. RAMMACHER 01-06-00	SCALE: NONE			SHEET NO. 1 OF 1 SHEETS	STA. TO STA.	FED. ROAD DIST. NO. 1 ILLINOIS FED. AID PROJECT		

PARTIAL RAMP CLOSURE DETAILS

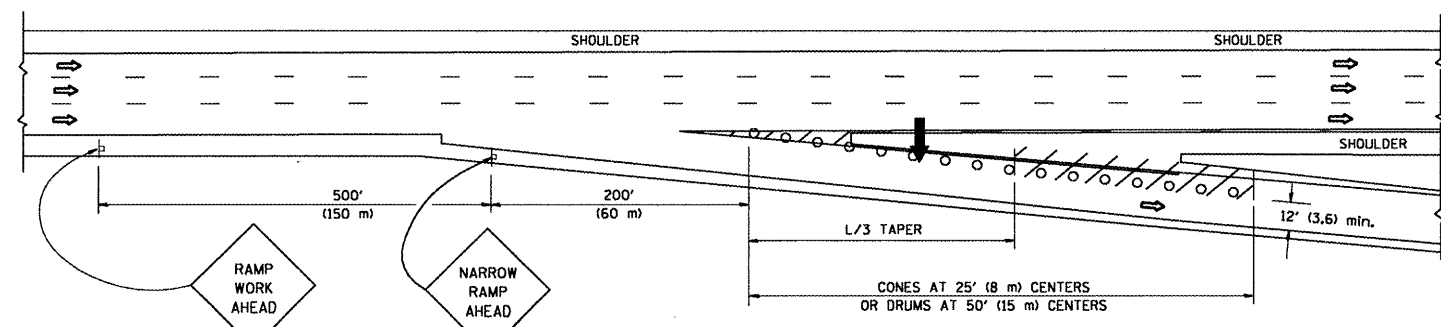
SHOULDER CLOSURE DETAILS



TYPICAL ENTRANCE RAMP



TYPICAL EXIT RAMP



TYPICAL EXIT RAMP

SYMBOLS

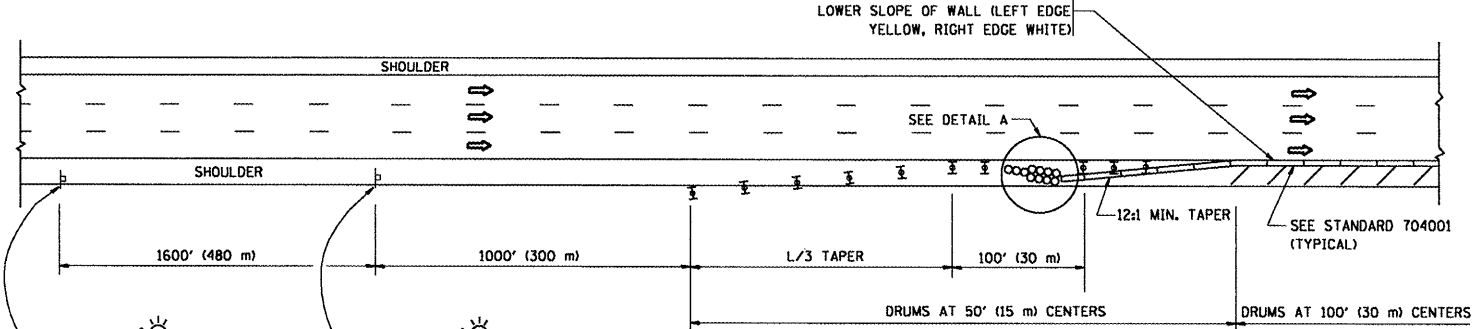
- ➔ ARROWBOARD
- ▨ WORK AREA
- ┌ SIGN ON PORTABLE OR PERMANENT SUPPORT
- FLAGGER WITH CONTROL SIGN
- ⊕ TYPE II BARRICADE, DRUM OR VERTICAL BARRICADE WITH STEADY BURN MONO-DIRECTIONAL LIGHT
- CONE, DRUM OR BARRICADE

GENERAL NOTES

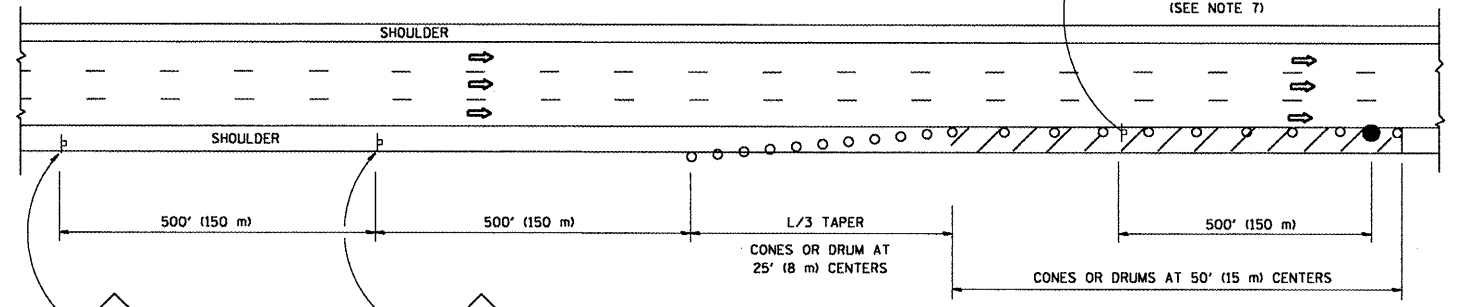
1. THE "L" DISTANCE EQUALS:

SPEED LIMIT	FORMULAS
45 mph (80 km/h) OR GREATER:	METRIC: $L=0.65(W)(S)$ ENGLISH: $L=(W)(S)$

W = WIDTH OF OFFSET IN FEET (METERS)
S = NORMAL POSTED SPEED MPH (KM/H)
2. PLASTIC DRUMS WITH HIGH PERFORMANCE REFLECTIVE SHEETING AND STEADY BURNING LIGHTS ARE REQUIRED FOR ALL NIGHTTIME CLOSURES.
3. ALL SIGNS SHALL BE POST MOUNTED IF THE CLOSURE TIME EXCEEDS FOUR DAYS.
4. FLASHING LIGHTS SHALL BE USED DURING THE HOURS OF DARKNESS AND SHALL BE INSTALLED ABOVE THE FIRST TWO SETS OF SIGNS.

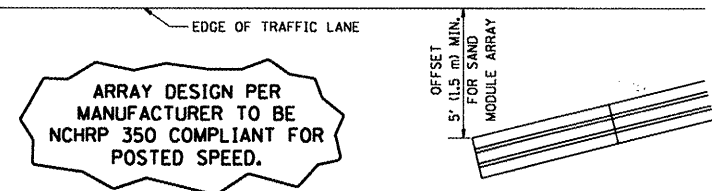


PERMANENT SHOULDER CLOSURE



DAYTIME SHOULDER CLOSURE

- THIS DETAIL IS USED WHERE:
1. VEHICLES, EQUIPMENT, WORKERS OR THEIR ACTIVITIES ENCRDACH IN AN AREA CLOSER THAN 15' (4.5 m) TO THE EDGE OF PAVEMENT FOR A PERIOD IN EXCESS OF 15 MINUTES.



DETAIL "A" IMPACT ATTENUATOR, TEMPORARY (SEE NOTE 5)

ALL DIMENSIONS ARE IN INCHES (MILLIMETERS) UNLESS OTHERWISE SHOWN.

STATE OF ILLINOIS DEPARTMENT OF TRANSPORTATION

TRAFFIC CONTROL DETAILS FOR FREEWAY SHOULDER CLOSURES AND PARTIAL RAMP CLOSURES

FILE NAME = \\dist\ntfa2\user\smithk1\Desktop\CADD

USER NAME = smithk1
DETAILS\17.dgn
PLOT SCALE = 100.0000 / IN.
PLOT DATE = 6/24/2008

DESIGNED -
DRAWN - D.W.S.
CHECKED -
DATE - 11-96

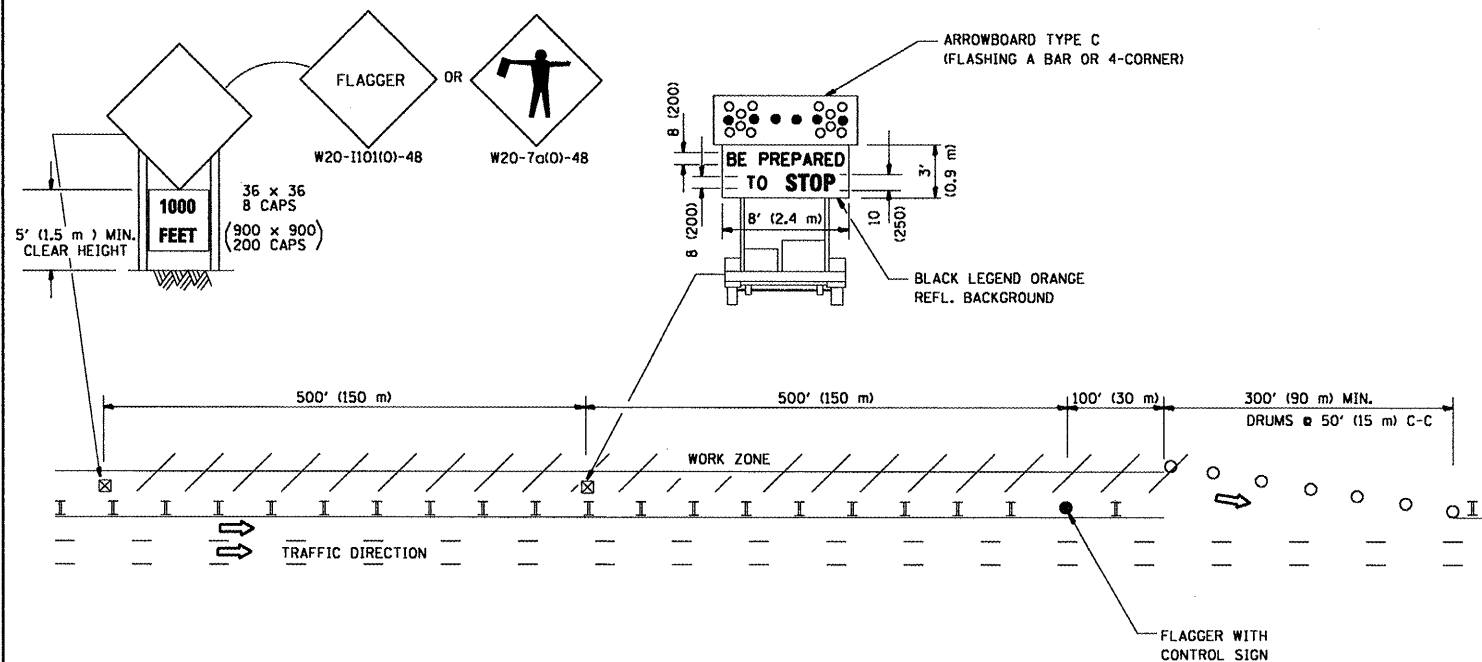
REVISED - J.A.F. 12-02
REVISED - 04-03
REVISED - J.A.F. 12-06
REVISED - S.P.B. 01-07

SCALE: NONE SHEET NO. 1 OF 1 SHEETS STA. TO STA.

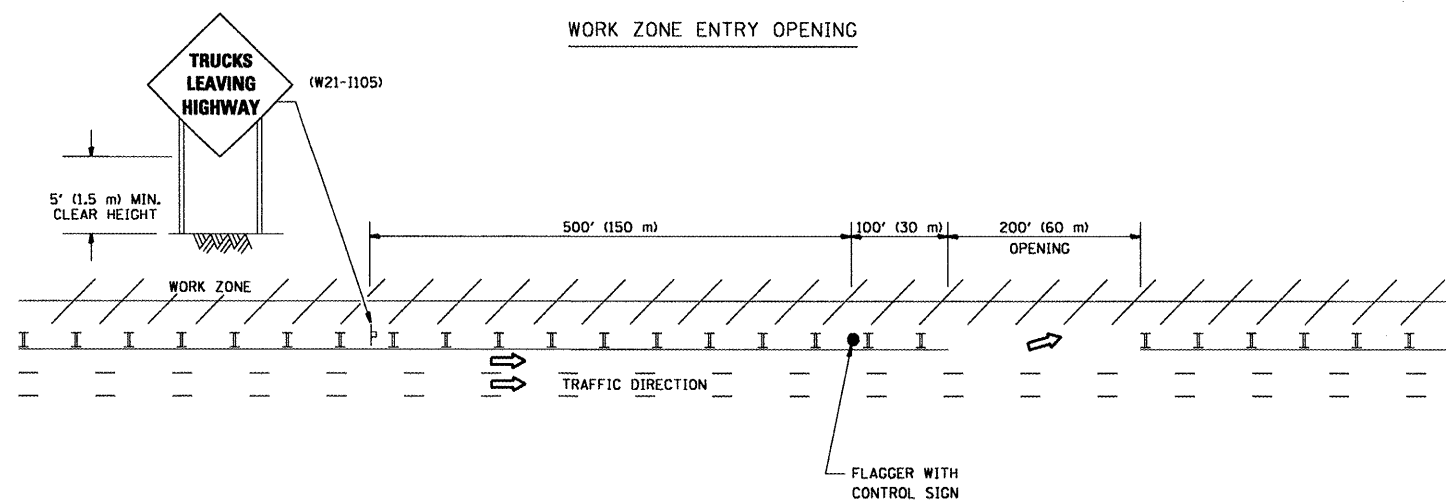
F.A. RTE.	SECTION	COUNTY	TOTAL SHEETS	SHEET NO.
VAR.	2008-050 PP	COOK	18	17
TC-17		CONTRACT NO. 60E99		
FED. ROAD DIST. NO. 1 [ILLINOIS] FED. AID PROJECT				

SIGNING FOR FLAGGING OPERATIONS AT WORK ZONE OPENINGS

WORK ZONE EXIT OPENING



WORK ZONE ENTRY OPENING



NOTES:

1. The Arrowboard, the Flagger Ahead trailer mounted sign, and the Trucks Leaving Highway sign shall be removed or turned away from traffic and the exit and entry openings shall be closed when the flagging operation ceases.
2. Work Zone Exit Openings should be a minimum of one half mile apart.
3. Exiting the work zone at any place other than at a Work Zone Exit Opening will be prohibited.
4. All vehicles shall enter the work zone at entry openings, using their turn signals to warn motorists

ALL DIMENSIONS ARE IN INCHES (MILLIMETERS)
UNLESS OTHERWISE SHOWN

FILE NAME =	USER NAME = smthkl	DESIGNED -	REVISED - D.W.S. 08-98	STATE OF ILLINOIS DEPARTMENT OF TRANSPORTATION	SIGNING FOR FLAGGING OPERATIONS AT WORK ZONE OPENINGS			F.A. RTE.	SECTION	COUNTY	TOTAL SHEETS	SHEET NO.	
DETAILS\ct18.dgn	DETAILS\ct18.dgn	DRAWN -	REVISED - J.A.F. 04-03		SCALE: NONE	SHEET NO. 1 OF 1 SHEETS	STA.	VAR.	2008-050 PP	COOK	18	18	
PLOT SCALE = 1/8" = 1' / IN.		CHECKED -	REVISED - J.A.F. 02-06						TC-18				CONTRACT NO. 60E99
PLOT DATE = 6/24/2008		DATE -	REVISED - S.P.B. 01-07						FED. ROAD DIST. NO. 1	ILLINOIS	FED. AID PROJECT		