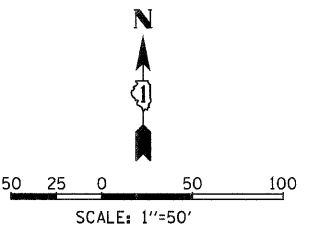


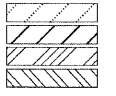
F.A.I. RTE.	SECTION	COUNTY	TOTAL SHEETS	SHEET NO.
57		WILL	303	30
STA. 14024+23.67 TO STA. 14029+50				
FED. ROAD DIST. NO. ILLINOIS FED. AID PROJECT				
991(82) R-383-1H8-1-BR-2 CONTRACT : 62253				

PLAN	DESIGNED	DATE
	BY	
	CHECKED	
	NO.	

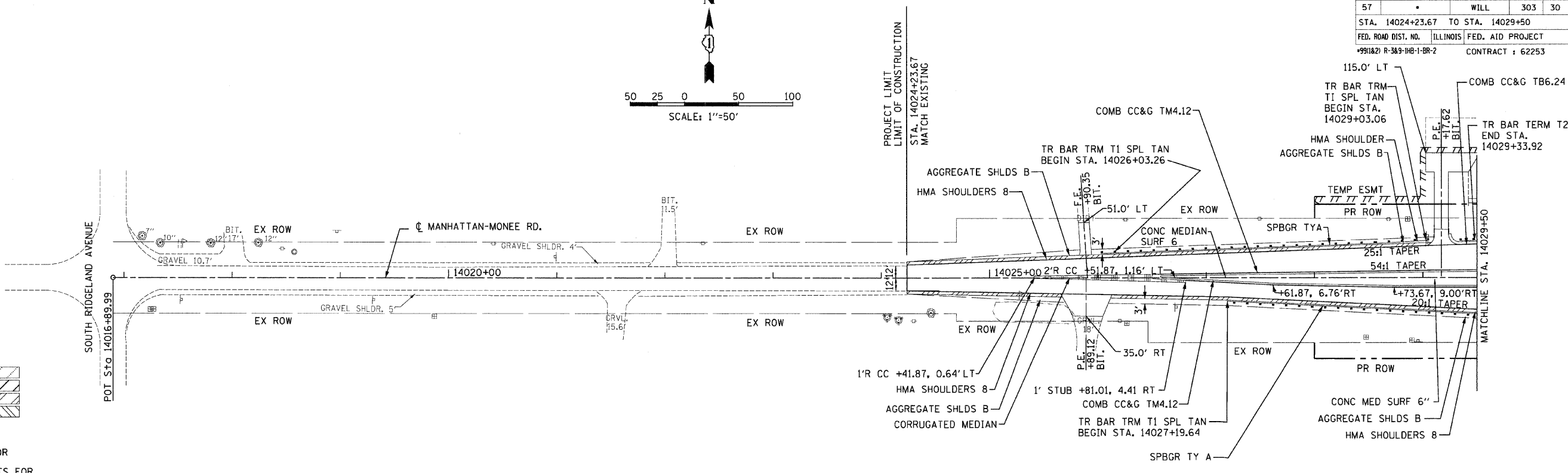
PROFILE	DESIGNED	DATE
	BY	
	CHECKED	
	NO.	



PAVEMENT LEGEND
 PAVEMENT RESURFACING
 PAVEMENT WIDENING
 HOT-MIX ASPHALT SHOULDER
 PCC SHOULDER



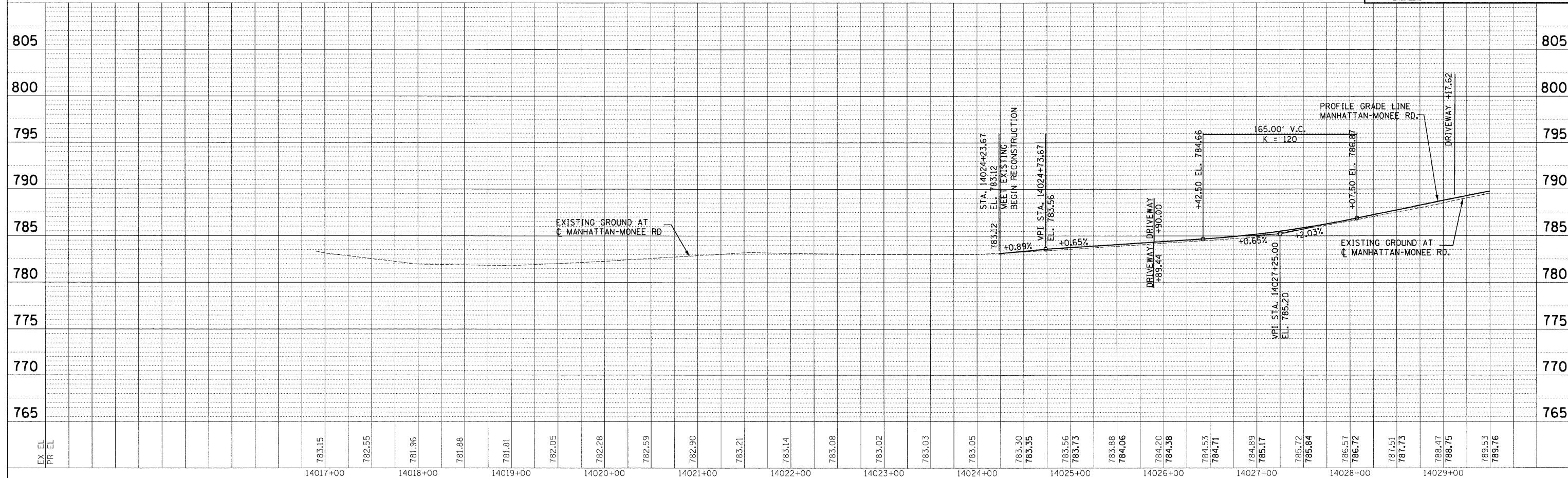
- NOTES**
- 1) SEE EXISTING CONDITION SHEETS FOR REMOVAL ITEMS
 - 2) SEE DRAINAGE AND UTILITIES SHEETS FOR DRAINAGE ITEMS AND UTILITIES ITEMS
 - 3) SEE GENERAL NOTES FOR SPECIAL AND HAZARDOUS WASTE REMOVAL
 - 4) SEE DRIVEWAY DETAIL SHEET AND SCHEDULE OF QUANTITIES FOR DETAILS OF DRIVEWAY REPLACEMENT.



MANHATTAN - MONEE ROAD

Clark Dietz
 ENGINEERS

DESIGN FIRM REGISTRATION
 No. 184-000450
 118 SOUTH CLINTON STREET
 SUITE 600
 CHICAGO, IL 60661
 PHONE : 312.648.9900
 FAX : 312.648.0204



PLAN AND PROFILE: MANHATTAN - MONEE ROAD - STA. 14024+23.67 TO STA. 14029+50

p:\102233\ploma\sheeta\102233\psa\101.dgn
 8/1/2008