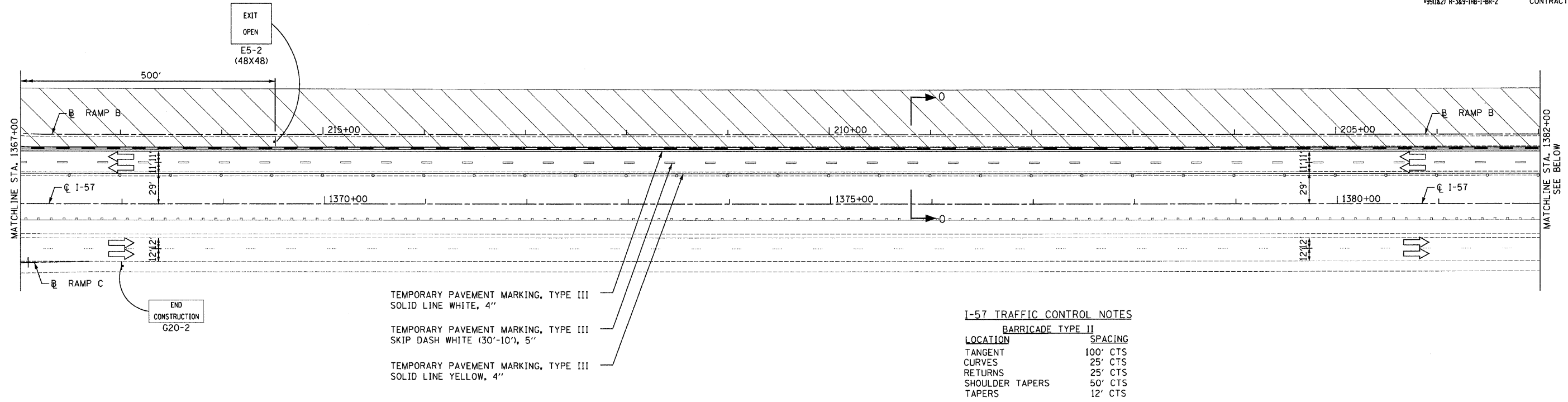
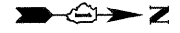


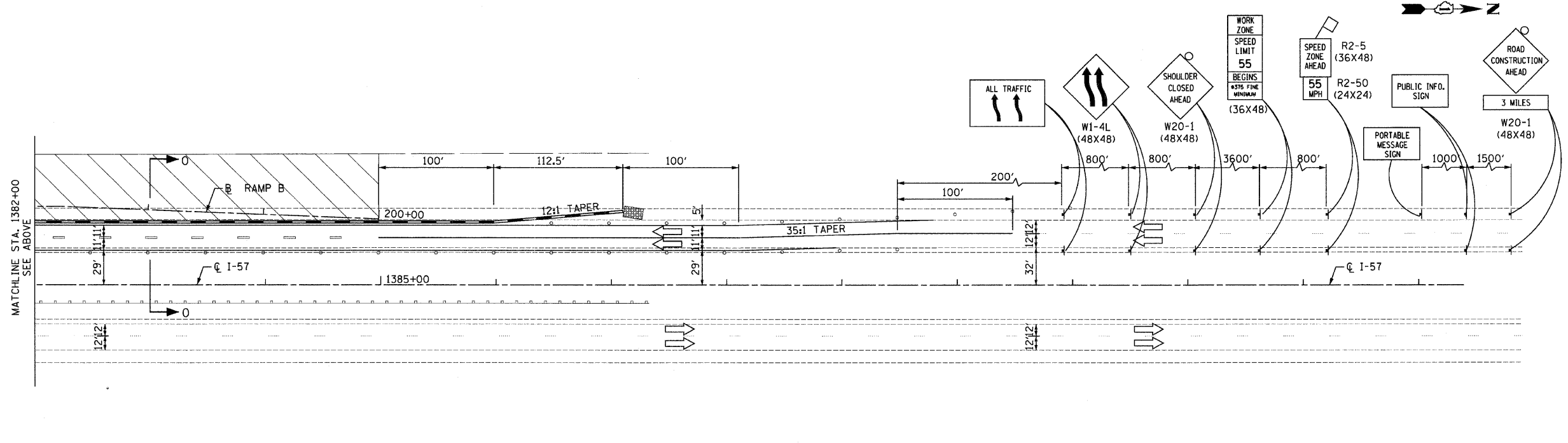
F.A.I. RTE.	SECTION	COUNTY	TOTAL SHEETS	SHEET NO.
57	*	WILL	303	44
STA. 1367+00		TO STA. 1390+00		
FED. ROAD DIST. NO.		ILLINOIS	FED. AID PROJECT	
*991(1&2) R-389-IHB-1-BR-2		CONTRACT: 62253		



**I-57 TRAFFIC CONTROL NOTES**

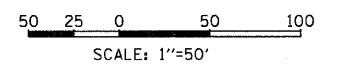
BARRICADE TYPE II	
LOCATION	SPACING
TANGENT	100' CTS
CURVES	25' CTS
RETURNS	25' CTS
SHOULDER TAPERS	50' CTS
TAPERS	12' CTS

**I-57  
STAGE I**



**I-57 TRAFFIC CONTROL LEGEND**

- TEMPORARY PAVEMENT
- WORK AREA
- DIRECTION OF TRAFFIC
- ARROW BOARD
- TRAFFIC SIGN
- BARRICADE TYPE II, DRUM OR VERTICAL BARRICADE WITH MONO-DIRECTIONAL STEADY BURNING LIGHT (SEE NOTES FOR SPACING)
- BARRICADE TYPE III WITH STEADY BURNING LIGHT
- TEMPORARY PAVEMENT MARKINGS, TYPE III
  - SKIP-DASH WHITE, 5"
  - SKIP DASH YELLOW, 5"
  - STOP LINE, 24"
  - SOLID LINE, 4"
  - DOUBLE CENTERLINE, YELLOW, 4"
  - DOTTED LINES (2'-6" SPACE), 4"
- TEMPORARY BARRIER WALL WITH BARRIER WALL REFLECTORS
- TEMPORARY IMPACT ATTENUATORS



REVISIONS	
NAME	DATE

ILLINOIS DEPARTMENT OF TRANSPORTATION  
 I-57 AT MANHATTAN - MONEE ROAD  
 SUGGESTED STAGES OF CONSTRUCTION  
 AND  
 TRAFFIC CONTROL  
 I-57  
 STAGE I

SCALE: VERT. NTS  
 HORIZ. 1"=50'  
 DATE 9/19/2008

DRAWN BY KLM  
 CHECKED BY TMW

**Clark Dietz**  
 ENGINEERS

DESIGN FIRM REGISTRATION  
 No. 184-000450  
 118 SOUTH CLINTON STREET  
 SUITE 600  
 CHICAGO, IL 60661  
 PHONE : 312.648.9900  
 FAX : 312.648.0204

**I-57  
STAGE I**

p:\1\02231\plans\sheet\02231CSF\0213.dgn  
 8/1/2008