

5- #4 d<sub>6</sub>(E) bars at 11" cts.  
Outside Face, Ea. End  
5- #6 d<sub>7</sub>(E) bars at 11" cts.  
Inside Face, Ea. End

205- #4 d<sub>3</sub>(E) bars at 12" cts.  
Outside Face  
205- #6 d<sub>4</sub>(E) bars at 12" cts.  
Inside Face

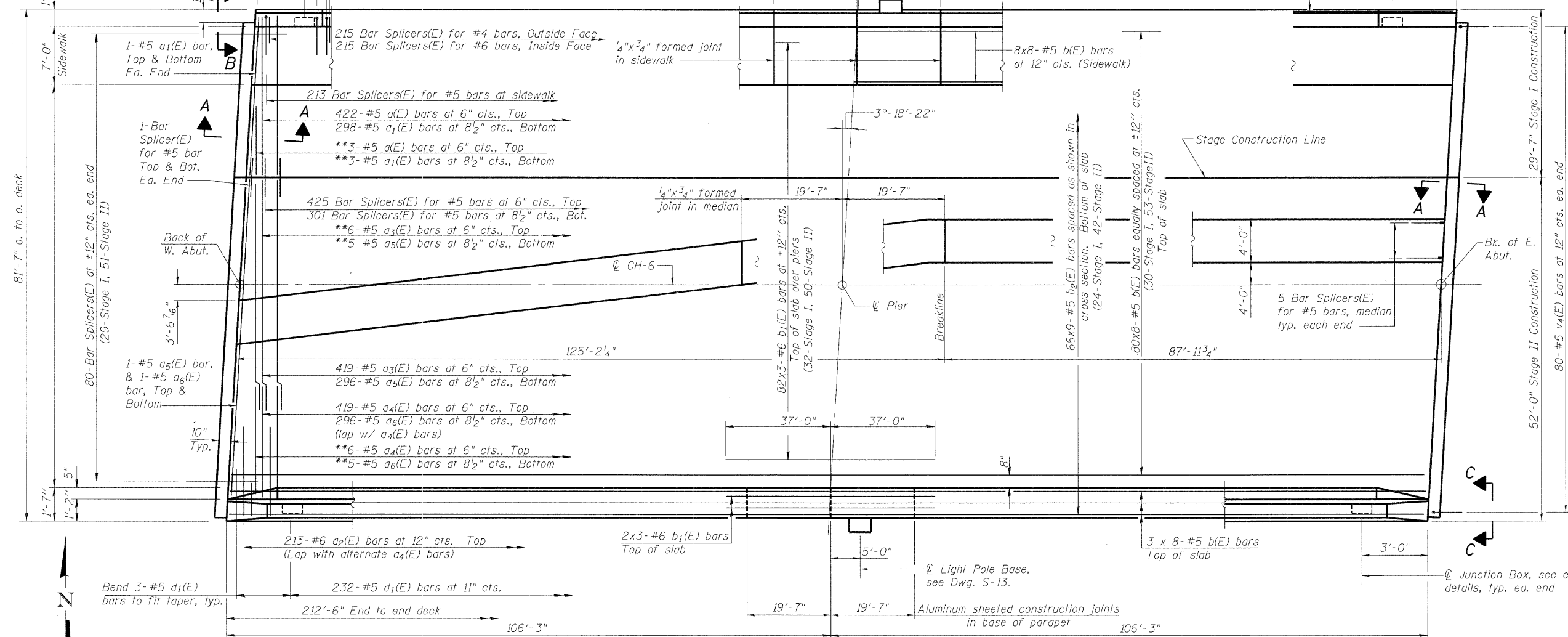
19'-7" 19'-7" Preformed Self-Expanding Cork Joint Filler  
in sidewalk mounted barrier  
5'-0" Light Pole Base,  
see Dwg. S-13.

\*SEC. 99 (1&2) R 3&9-IHB-1-BR2  
Junction Box, see electrical  
details, typ. ea. end

ROUTE NO.	SECTION	COUNTY	TOTAL SHEETS	SHEET NO.
FAI 57	*	WILL	303	163
FED. ROAD DIST. NO. 7		ILL. PROJ. NO.	FED. AID PROJECT	
Contract #62253				

**NOTES:**

1. See Dwg. S-13 for superstructure details and Bill of Material.
2. Bars indicated thus 20 x 3- #5 etc. indicates 20 lines of bars with 3 lengths per line.
3. See Dwg. S-10 and S-11 for parapet and median reinforcement.
4. See Dwg. S-22 for Bar Splicer Details.
5. See Dwg. S-1 for Floor Drain locations.
6. For Section A-A see Dwg. S-12.
7. See Roadway plans for complete layout of median.

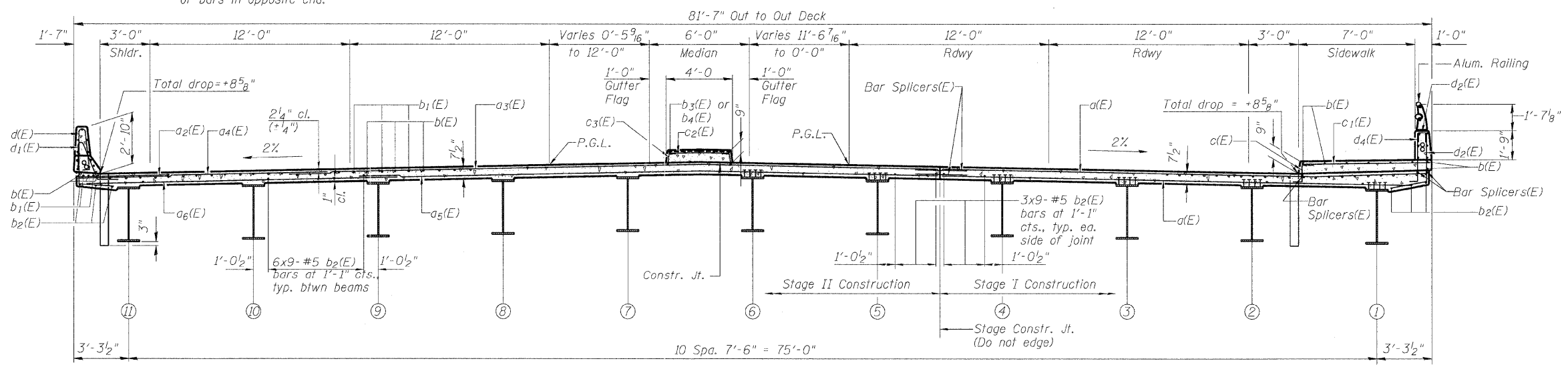


**HALF PLAN**

\*\* Order a(E) & a<sub>1</sub>(E) a<sub>3</sub>(E), a<sub>4</sub>(E), a<sub>5</sub>(E) and a<sub>6</sub>(E) bars full length. Cut to fit skew and use remainder of bars in opposite end.

**MIN. BAR LAP**

#5	2'-2"
#6	2'-7"



**NEAR PIER**

**CROSS SECTION**  
(Looking West)

**NEAR MIDSPAN**

**DECK PLAN & CROSS SECTION**

MANHATTAN-MONEE ROAD (CH-6)  
OVER I-57  
F.A. I-57 SEC. 99(1&2) R 3&9-IHB-1-BR2  
WILL COUNTY STA. 14037+43.90  
STRUCTURE NUMBER 099-4647

DESIGN FIRM REGISTRATION  
No. 184-000450  
**Clark Dietz**  
ENGINEERS  
1817 SOUTH NEEL STREET  
SUITE 100  
CHAMPAIGN, IL 61820  
PHONE : 217.373.8900  
FAX : 217.373.8923

NOTES: DIMENSIONAL DATA IS NOT TO BE OBTAINED BY SCALING ANY PORTION OF THIS DRAWING.

DESIGNED BY: SMM	PROJECT NO: 102230
DRAWN BY: MEW/SLD	DATE: 05/2008
CHECKED BY: SLD	
APPROVED BY: SMM	
ACTIVITY: INITIALS	

DRAWING NUMBER  
**S-9**