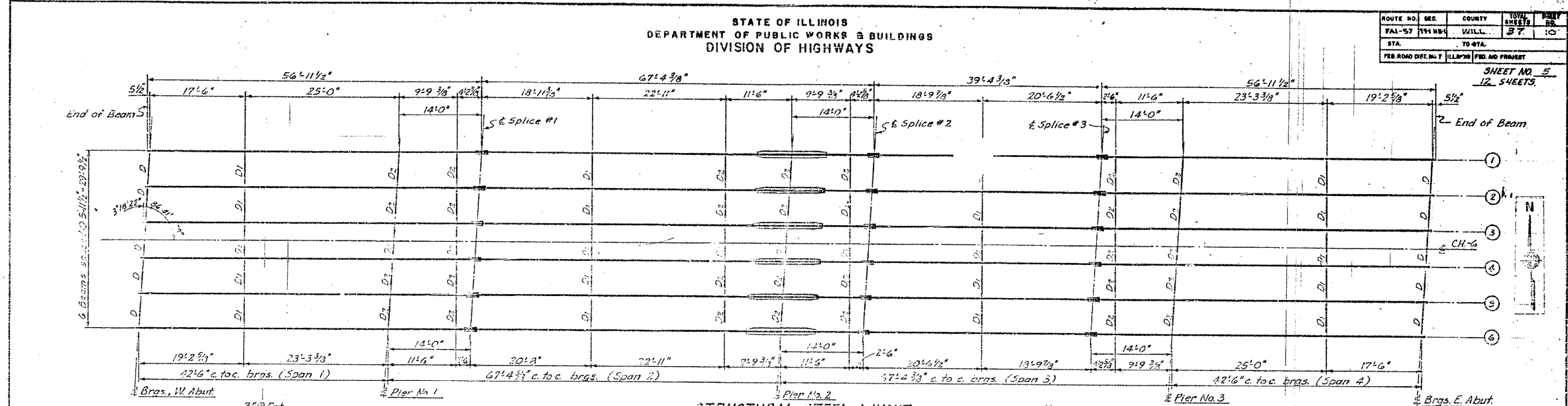
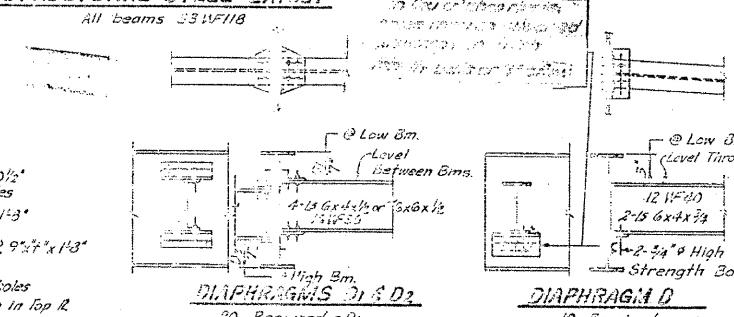
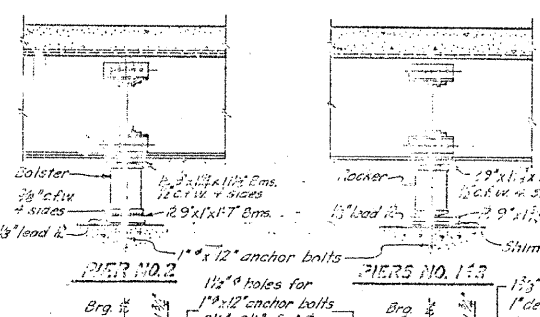
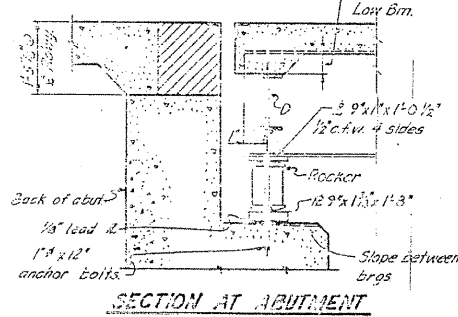


STATE OF ILLINOIS
 DEPARTMENT OF PUBLIC WORKS & BUILDINGS
 DIVISION OF HIGHWAYS

ROUTE NO.	SER.	COUNTY	TOTAL SHEETS	SHEET NO.
FAL-57	191 MB	WILL.	37	10
STA.	TO STA.			
FED. ROAD DIST. NO. ILLINOIS FED. AID PROJECT				
CONTRACT: 62253				



STRUCTURAL STEEL LAYOUT
 All beams 33WF118



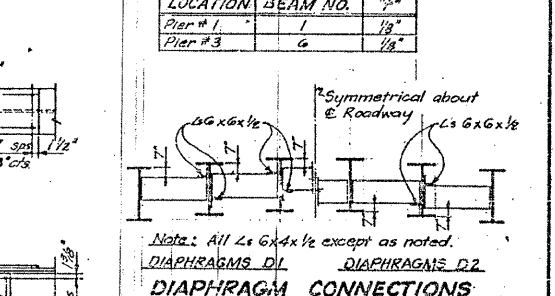
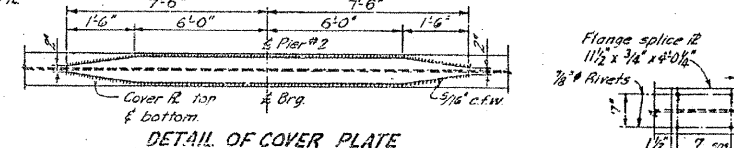
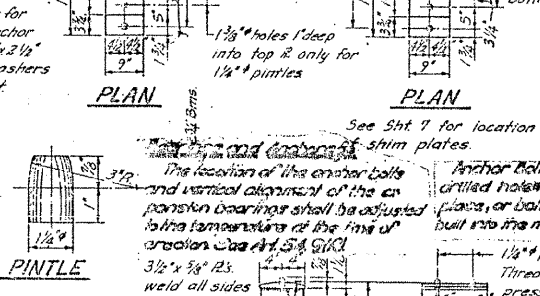
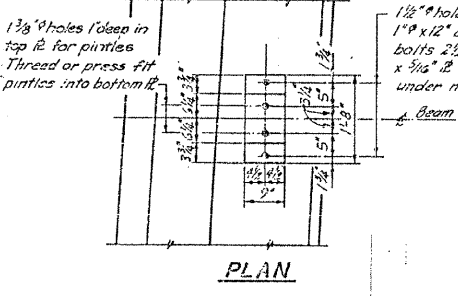
ELEVATION TOP OF BEAMS*

BEAM	1	2	3	4	5	6
Br. W. Abutment	50.983	51.099	51.113	51.125	51.091	50.999
Br. Pier No. 1	51.199	51.224	51.234	51.234	51.201	51.172
Splice #1	51.370	51.377	51.377	51.377	51.373	51.363
Br. Pier No. 2	51.342	51.451	51.512	51.512	51.491	51.433
Splice #2	51.531	51.570	51.572	51.572	51.571	51.572
Splice #3	51.533	51.573	51.573	51.573	51.572	51.572
Br. Pier No. 3	51.190	51.301	51.354	51.354	51.255	51.179
Br. E. Abutment	50.759	51.631	51.125	51.125	51.039	50.993

* These elevations are theoretical top of WF flange elevations and are to be used for fabrication of structural steel. They do not include any allowance for deflection.

TABLE OF SHIM 1/2" DIMENSIONS

LOCATION	BEAM NO.	1/2"
Pier # 1	1	1/8"
Pier # 3	6	1/8"



DESIGNED WLR
 CHECKED P.M.
 DRAWN L.S.
 CHECKED WRT

EXAMINED
 PASSED
 APPROVED

DETAIL OF BEARING AT PIERS NO. 1 & 3 AND ABUTMENTS
 Anchor bolts shall be grouted into drilled holes of the beams as in PIER 2.
 The location of the anchor bolts and vertical alignment of the expansion bearings shall be adjusted to the temperature of the time of erection. Use 1/2" x 1/2" x 1/2" (1/2" x 1/2" x 1/2")

DETAIL OF BEARING AT PIER NO. 2
 Plane edges 3/4" x 3/8" R's weld all sides to 10W112 with 3/8" c.v.w.
 10W112

DETAIL OF SPLICE
 Web splice R 18" x 3/8" x 1/2" each side

ILLINOIS DIVISION OF HIGHWAYS
 STRUCTURAL STEEL
 F.A.I. RT. 57 SEC. 99-1-HB-1
 WILL COUNTY
 STA. 1348+92.18

FOR INFORMATION ONLY