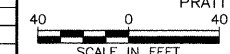
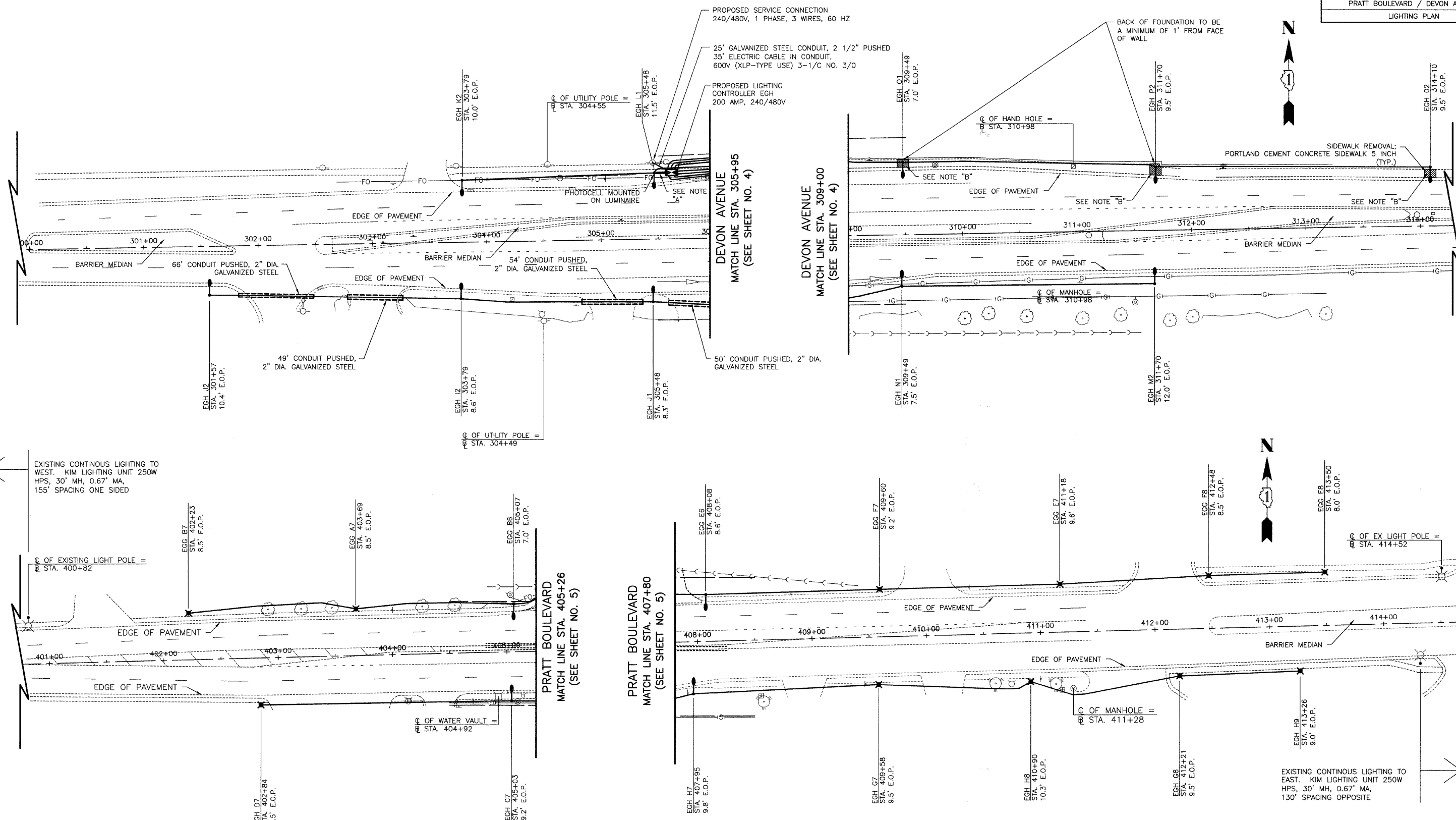


SECTION	COUNTY	TOTAL SHEETS	SHEET NO.
08-00053-00-LT	COOK/DUPAGE	15	8
PRATT BOULEVARD / DEVON AVENUE			
LIGHTING PLAN			



- NOTES:
- ALL PHOTOCELL MATERIAL AND INSTALLATION SHALL BE PART OF THE PAY ITEM "LIGHTING CONTROLLER, SPECIAL."
  - A ELECTRIC CABLE IN 2" GALVANIZED STEEL CONDUIT 600V (XLP-TYPE USE) 3-1/C NO. 10 FOR PHOTOCELL CONNECTION
  - B SIDEWALK REMOVAL; PORTLAND CEMENT CONCRETE SIDEWALK 5 INCH

REVISIONS	
NAME	DATE

ILLINOIS DEPARTMENT OF TRANSPORTATION  
 ILLINOIS ROUTE 83  
 ROADWAY LIGHTING  
**LIGHTING PLAN**  
 DEVON AVENUE  
 PRATT BOULEVARD  
 DATE: 05/14/2008  
 CHECKED BY: D.N.M.

