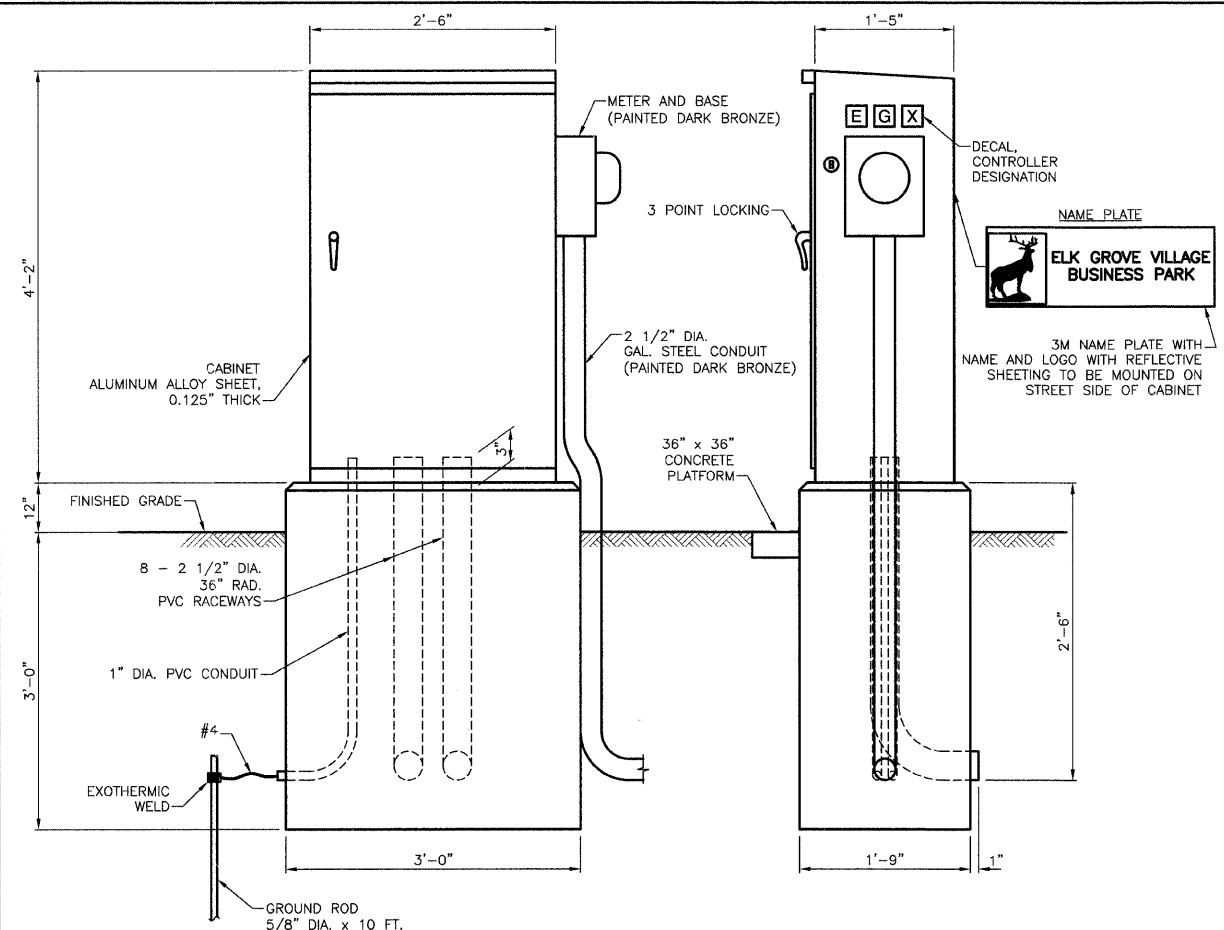


| SECTION | COUNTY | TOTAL SHEETS | SHEET NO. |
|--------------------------------|-------------|--------------|-----------|
| 08-00053-00-LT | COOK/DUPAGE | 15 | 13 |
| ILLINOIS ROUTE 83 (BUSSE ROAD) | | | |
| LIGHTING DETAILS | | | |



LIGHTING CONTROLLER, SPECIAL
CONTROL CABINET DETAILS

NOTES

THE CABINET SHALL BE FABRICATED FROM 0.125" THICK ALUMINUM ALLOY SHEET AND SHALL BE REINFORCED WITH ALUMINUM ANGLES. THE CABINET DOOR SHALL BE NEMA TYPE 3R CONSTRUCTION WITH NEOPRENE GASKET. THE DOOR SHALL HAVE STAINLESS STEEL HINGES AND THREE POINT LOCKING SYSTEM.

THE CONTRACTOR SHALL REMOVE VEGETATION AND TOPSOIL, LEVEL THE AREA IN FRONT OF THE CONTROL CABINET DOOR AND PLACE LENGTHWISE, PARALLEL TO CONTROL CABINET, A PRECAST PAD, 36" x 36" x 3" MINIMUM SIZE. THE COST OF LABOR AND MATERIALS SHALL BE INCIDENTAL TO THE CONTROL CABINET.

CONTROL WIRE SHALL BE #12 AWG, 600V, TYPE "SIS" STRANDED COPPER GRAY SWITCH BOARD WIRE. THE ENDS OF ALL CONTROL WIRES SHALL BE IDENTIFIED.

ALL WIRING WITHIN THE CABINET SHALL BE COLOR CODED AS INDICATED.
R = RED BL = BLUE W = WHITE
B = BLACK Y = YELLOW G = GREEN

THE ELECTRIC METER BOX SHALL BE MOUNTED ON THE SIDE OF THE CONTROL CABINET, NEAR THE SERVICE POLE AND/OR AS DIRECTED BY THE ENGINEER.

ALL CONTROL CABINET ITEMS SHALL HAVE SUITABLE IDENTIFICATION. OPEN CIRCUIT BREAKERS, CONTACTORS AND OTHER OPEN DEVICES SHALL HAVE PERMANENT SELF STICKING TAGS. DEVICES IN ENCLOSURES SHALL HAVE ENGRAVED 2-COLOR LAMINATED PLASTIC NAMEPLATES ATTACHED TO ENCLOSURES WITH SCREWS. NAMEPLATES SHALL BE ENGRAVED TO CORRESPOND TO DESIGNATIONS ON THE DRAWINGS. INTERNAL CABINET WIRING SHALL BE IDENTIFIED AS INDICATED OR AS DIRECTED BY THE ENGINEER BY MEANS OF SELF-STICKING TAGS APPLIED AT EACH CONNECTED END. IDENTIFICATION SHALL BE MADE BY THE CABINET MANUFACTURER.

ALL WIRING SHALL BE NEATLY DRESSED AND SUPPORTED.

THE HEADS OF CONNECTOR SCREWS SHALL BE PAINTED WHITE FOR NEUTRAL BUSS CONNECTION AND GREEN FOR GROUND BUSS CONNECTORS.

PROVIDE SEALING GROMMETS FOR ALL OPEN WIRING EXTENDED FROM DEVICES IN BOXES WITHIN THE CONTROL CABINET.

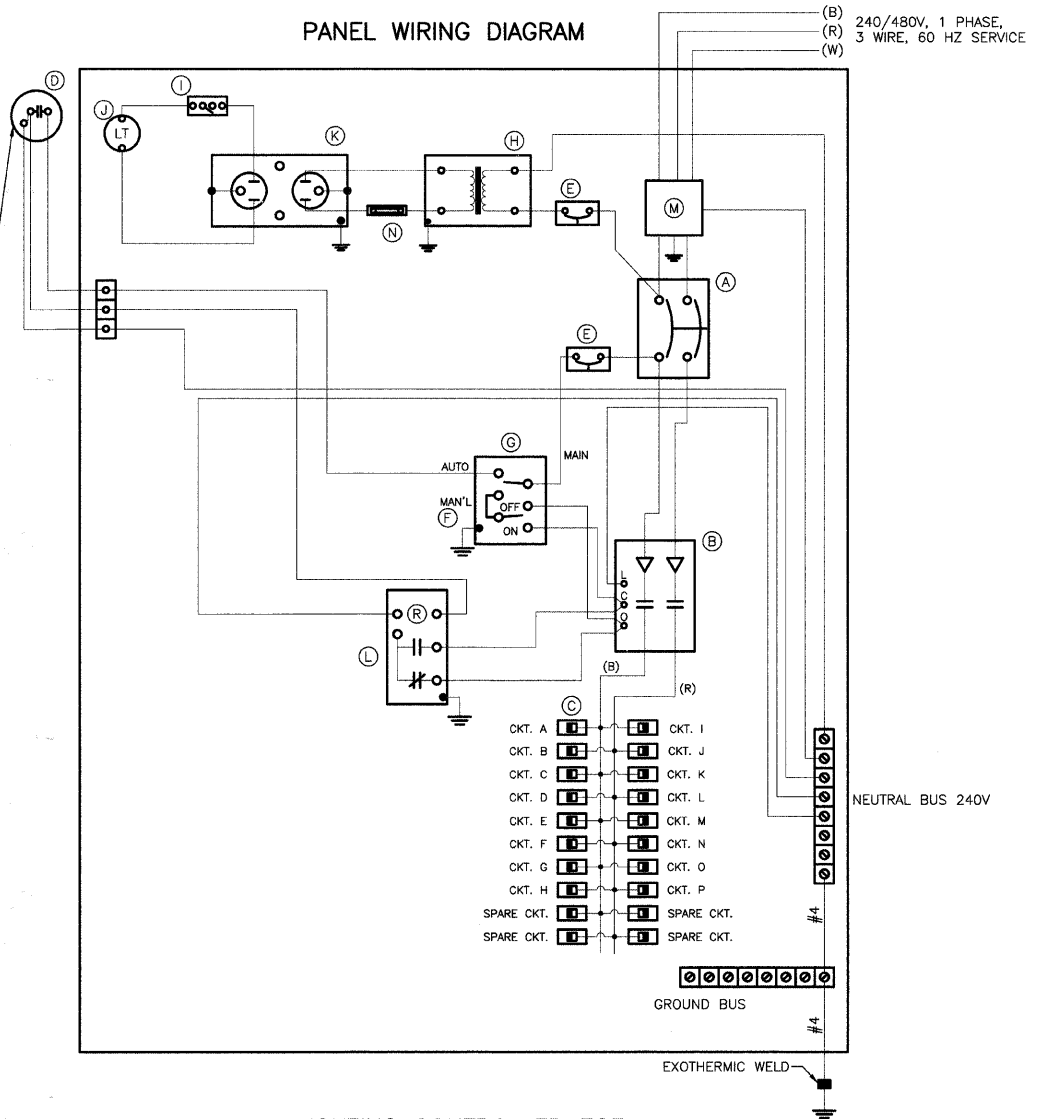
THE CONTROLLER SHALL BE CONSTRUCTED TO U.L. STD. 508 AND BEAR THE U.L. LABEL "ENCLOSED INDUSTRIAL CONTROL PANEL".

PROVIDE A HOLDER AND WATERPROOF POUCH ON THE INNER SIDE OF THE CONTROLLER DOOR. THE HOLDER AND POUCH SHALL BE MOUNTED SO THAT RAINWATER OR CONDENSED WATER CANNOT ENTER THE POUCH WITH THE CABINET DOOR OPEN. FURNISH THE APPROVED COPY OF THE "CONTROL CABINET WIRING DIAGRAM".

THE CABINET, METER AND BASE, AND CONDUIT FOR THE METER SHALL BE PAINTED IN DARK BRONZE FINISH.

THE LIGHTING CONTROLLER CABINET SHALL BE PLACED SO THAT THE DOOR IS ORIENTED OPPOSITE TO TRAFFIC.

| DEVICE SCHEDULE | | |
|-----------------|--------|---|
| ITEM | QUANT. | DESCRIPTION |
| (A) | 1 | 200 AMP CIRCUIT BREAKER, MOLDED CASE, THERMAL MAGNETIC, 2-POLE, SINGLE THROW, 600V FRAME, NON-INTERCHANGEABLE TRIP, BOLT ON TYPE; INTERRUPTING CAPACITY OF NOT LESS THAN 25,000 RMS SYMMETRICAL AMPERES AT 600V |
| (B) | 1 | 200 A., ELECTRICALLY OPERATED AND MECHANICALLY HELD LIGHTING CONTACTOR, 2-POLE, 600 V. WITH 120 V. COIL |
| (C) | 20 | 240/480 V. 1 PHASE PANEL BOARD WITH 200 A. COPPER MAINS SINGLE POLE, 30 A., 277 V. BOLT ON BRANCH CIRCUIT BREAKERS INTERRUPTING CAPACITY OF NOT LESS THAN 14,000 RMS SYMMETRICAL AMPERES AT 277 V. |
| (D) | 1 | PHOTO-ELECTRIC CELL, 120 V, MOUNT ON LIGHT POLE NEAREST CONTROLLER |
| (E) | 2 | THERMAL MAGNETIC, MOLDED CASE CIRCUIT BREAKER, 1 POLE, 15 A., 277 V, BOLT ON TYPE, INTERRUPTING CAPACITY OF NOT LESS THAN 14,000 RMS SYMMETRICAL AMPERES AT 277 V. |
| (F) | 1 | CONTROL SWITCH, MOMENTARY CONTACT, SPDT, 15 A., 240 V. |
| (G) | 1 | CONTROL SWITCH, TOGGLE TYPE, SPDT, 20 A., 240 V. SPEC. GRADE |
| (H) | 1 | 240/120V. STEP DOWN CONTROL TRANSFORMER 750 VA RATED |
| (I) | 1 | MICRO SWITCH (MOUNTED WITH ACTUATOR TO SWITCH WHEN DOOR IS OPEN) |
| (J) | 1 | 60 WATT LIGHT FIXTURE VAPORTIGHT WITH GLOBE, GUARD AND MOUNTING BOX |
| (K) | 1 | 120 VOLT, 15 A. GFCI RECEPTACLE, SPECIFICATION GRADE IN NEMA 5-15R WEATHERPROOF BOX WITH FLAP-TYPE COVER |
| (L) | 1 | POWER RELAY WITH CONTACTS RATED FOR CONTACTOR INRUSH CURRENT - 120 V COIL |
| (M) | 1 | SURGE ARRESTOR, 5 WIRE EDCO "4803" OR EQUAL |
| (N) | 1 | FUSE 600 VOLT 30 AMP |



LIGHTING CONTROLLER EGF
WIRING DIAGRAM

| REVISIONS | |
|-----------|------|
| NAME | DATE |
| | |
| | |
| | |
| | |
| | |
| | |
| | |

ILLINOIS DEPARTMENT OF TRANSPORTATION
ILLINOIS ROUTE 83
ROADWAY LIGHTING
LIGHTING DETAILS

ILLINOIS ROUTE 83
(BUSSE ROAD)

DATE: 05/14/2008
CHECKED BY: D.N.M.