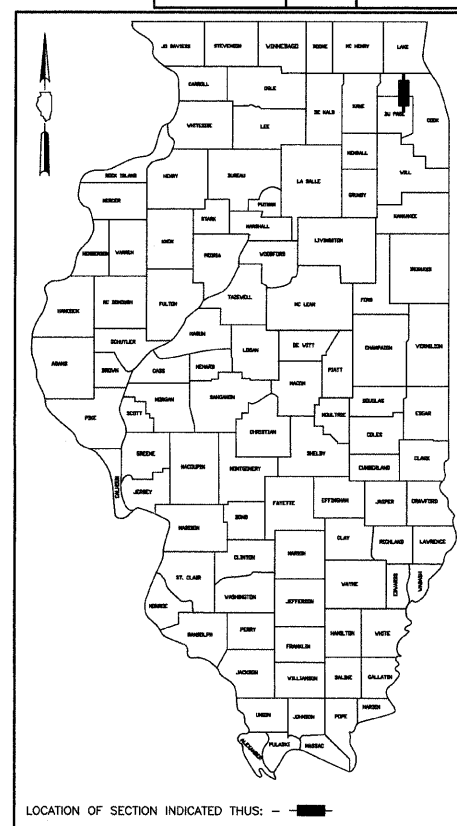


F.A.P. NO.	SECTION	COUNTY	TOTAL SHEETS	SHEET NO.
344	08-00053-00-LT	COOK/DUPAGE	15	1
COVER SHEET				
FED. ROAD DISTRICT NO. 7	ILLINOIS	FED. AID PROJECT M-8003(960)		



LOCATION OF SECTION INDICATED THIS: -

STATE OF ILLINOIS
DEPARTMENT OF TRANSPORTATION
DIVISION OF HIGHWAYS

APPROVED MAY 14 20 08
Alan P. Pappas
DIRECTOR OF ENGINEERING AND COMMUNITY DEVELOPMENT
VILLAGE OF ELK GROVE VILLAGE

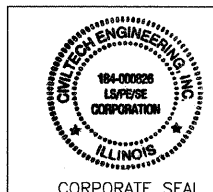
PASSED MAY 21 20 08
Christopher Hour
DISTRICT ONE ENGINEER OF LOCAL ROADS & STREETS

RELEASING FOR
BID BASED ON
LIMITED REVIEW MAY 21, 20 08

Diana M. O'Keefe DE
DEPUTY DIRECTOR OF HIGHWAYS, REGION ONE ENGINEER

P.E. SIGNATURE: *David Mertz*
P.E. NAME: DAVID MERTZ
DATE: 16 MAY 2008
IL LICENSE NO.: 062-052068
LICENSE EXPIRATION: 11/30/2009

P.E. SIGNATURE: *Derek N. Mall*
P.E. NAME: DEREK N. MALL
DATE: 5/19/08
IL LICENSE NO.: 062-051308
LICENSE EXPIRATION: 11/30/2009



PLANS PREPARED BY:
CIVILTECH
450 E. Devon Ave., Suite 300 - Itasca, Illinois 60143
Tel: 630.773.3900 - Fax: 630.773.3975
www.civiltechinc.com

PRINTED BY AUTHORITY OF THE STATE OF ILLINOIS

STATE OF ILLINOIS
DEPARTMENT OF TRANSPORTATION
DIVISION OF HIGHWAYS

PLANS FOR PROPOSED FEDERAL AID PROJECT
F.A.P. ROUTE 344 (IL ROUTE 83 - BUSSE ROAD)
MARK STREET TO TOUHY AVENUE

SECTION 08-00053-00-LT
PROJECT NO. M-8003(960)

LIGHTING
COOK AND DUPAGE COUNTY
C-91-223-08

INDEX OF SHEETS

SHEET NO.	DESCRIPTION
1	TITLE SHEET
2	SUMMARY OF QUANTITIES, GENERAL NOTES AND LEGEND
3-9	LIGHTING PLANS
10	WIRING DIAGRAM
11-15	LIGHTING DETAILS

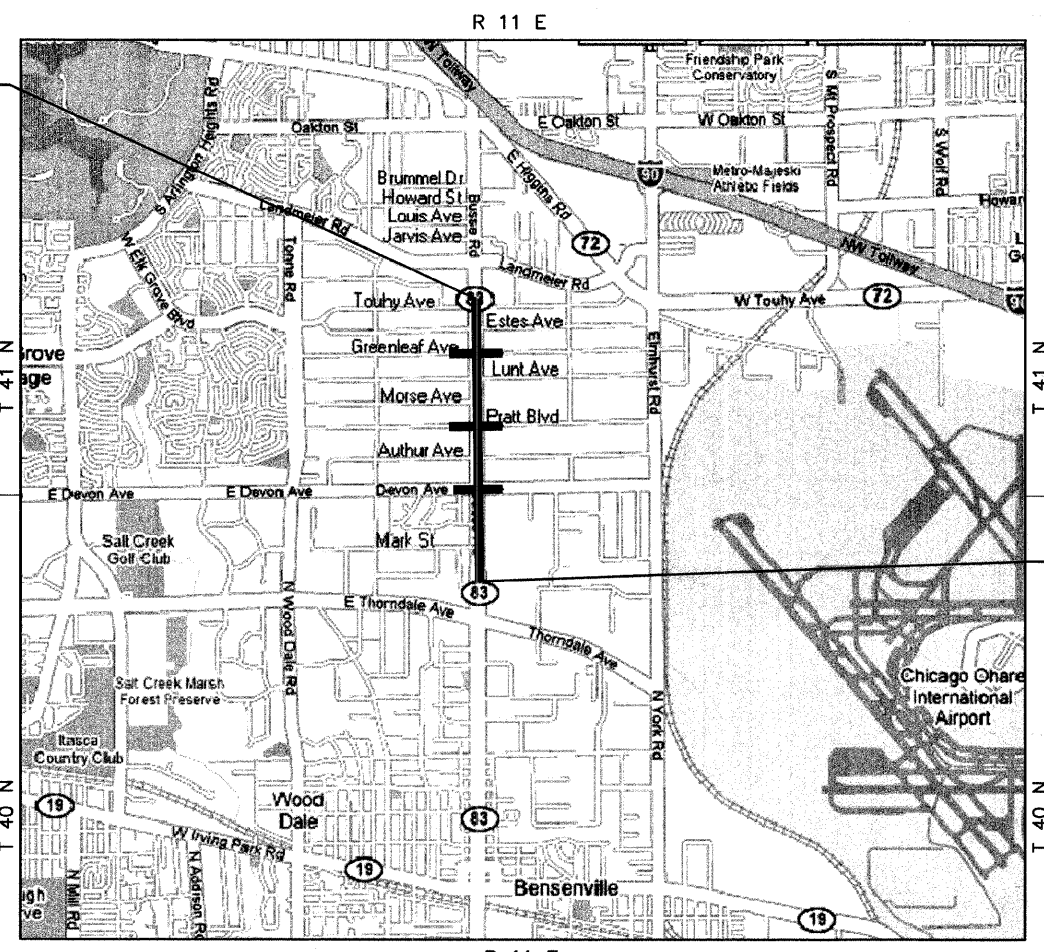
INDEX OF STATE STANDARDS

NO.	DESCRIPTION
701101-01	OFF-ROAD OPERATIONS, MULTILANE, 15' TO 24" FROM PAVEMENT EDGE
701106-01	OFF-ROAD OPERATIONS, MULTILANE, MORE THAN 15' AWAY
701421-01	LANE CLOSURE, MULTILANE, DAY OPERATIONS ONLY, FOR SPEEDS ≥ 45 MPH TO 55 MPH
701501-04	URBAN LANE CLOSURE, 2L, 2W, UNDIVIDED
701601-05	URBAN LANE CLOSURE, MULTILANE, 1W OR 2W WITH NON TRAVERSABLE MEDIAN
701606-05	URBAN LANE CLOSURE, MULTILANE 2W WITH MOUNTABLE MEDIAN
701701-05	URBAN LANE CLOSURE, MULTILANE INTERSECTION
701801-03	LANE CLOSURE, MULTILANE, 1W OR 2W CROSSWALK OR SIDEWALK CLOSURE
701901	TRAFFIC CONTROL DEVICES

END IMPROVEMENT
BUSSE ROAD
STA. 1078+33

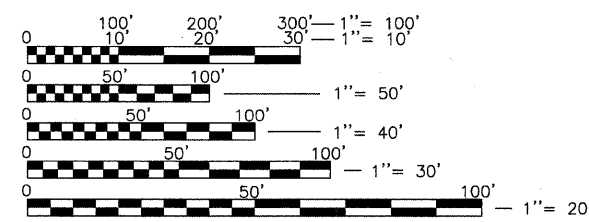
PROJECT LOCATED IN VILLAGE
OF ELK GROVE VILLAGE

BEGIN IMPROVEMENT
BUSSE ROAD
STA. 998+85



LOCATION MAP (NOT TO SCALE)

NET AND GROSS PROJECT LENGTH: 11,200 FEET (2.1 MILES)



FULL SIZE PLANS HAVE BEEN PREPARED USING STANDARD ENGINEERING SCALES. REDUCED SIZED PLANS WILL NOT CONFORM TO STANDARD SCALES. IN MAKING MEASUREMENTS ON REDUCED PLANS, THE ABOVE SCALES MAY BE USED.

THE "STANDARD SPECIFICATIONS FOR ROAD AND BRIDGE CONSTRUCTION", ADOPTED JANUARY 1, 2007 BY THE ILLINOIS DEPARTMENT OF TRANSPORTATION, SHALL GOVERN THIS WORK.



J.U.L.I.E.
JOINT UTILITY LOCATION
INFORMATION FOR EXCAVATION
1-800-892-0123 OR 811

CONTRACT NO. 63029

FEDERAL AID DESIGN ENGINEER: PHIL MARCYN 847-705-4189
CONSULTANT ENGINEER: DEREK MALL, P.E. CIVILTECH ENGINEERING, INC.

SECTION	COUNTY	TOTAL SHEETS	SHEET NO.
08-00053-00-LT	COOK/DUPAGE	15	2
ILLINOIS ROUTE 83 (BUSSE ROAD)			
SUMMARY OF QUANTITIES, GENERAL NOTES AND LEGEND			

GENERAL NOTES

SUMMARY OF QUANTITIES

Y030-1E

ITEM NO.	PAY ITEM DESCRIPTION	UNIT	TOTAL QUANTITY
21101615	TOPSOIL FURNISH AND PLACE, 4"	SQ YD	2,230
21300010	EXPLORATION TRENCH, SPECIAL	FOOT	2,351
25000400	NITROGEN FERTILIZER NUTRIENT	POUND	42
25000500	PHOSPHORUS FERTILIZER NUTRIENT	POUND	42
25000600	POTASSIUM FERTILIZER NUTRIENT	POUND	42
25200100	SODDING	SQ YD	2,230
25200200	SUPPLEMENTAL WATERING	UNIT	35
42400200	PORTLAND CEMENT CONCRETE SIDEWALK 5-INCH	SQ FT	300
44000600	SIDEWALK REMOVAL	SQ FT	300
67100100	MOBILIZATION	L SUM	1
70101700	TRAFFIC CONTROL AND PROTECTION	L SUM	1
80400100	ELECTRIC SERVICE INSTALLATION	EACH	2
80400200	ELECTRIC UTILITY SERVICE CONNECTION	L SUM	1
81000600	CONDUIT IN TRENCH, 2" DIA., GALVANIZED STEEL	FOOT	62
81018500	CONDUIT PUSHED, 2" DIA., GALVANIZED STEEL	FOOT	1,502
81018600	CONDUIT PUSHED, 2 1/2" DIA., GALVANIZED STEEL	FOOT	85
81018900	CONDUIT PUSHED, 4" DIA., GALVANIZED STEEL	FOOT	986
81603055	UNIT DUCT, 600V, 3-1C NO.8, 1/C NO.8 GROUND, (XLP-TYPE USE), 1" DIA. POLYETHYLENE	FOOT	2,839
81603085	UNIT DUCT, 600V, 3-1C NO.4, 1/C NO.4 GROUND, (XLP-TYPE USE), 1 1/4" DIA. POLYETHYLENE	FOOT	22,250
81702460	ELECTRIC CABLE IN CONDUIT, 600V (XLP-TYPE USE) 3-1/C NO. 3/0	FOOT	95
81900200	TRENCH AND BACKFILL FOR ELECTRICAL WORK	FOOT	1,410
82500505	LIGHTING CONTROLLER, SPECIAL	EACH	2
83017400	LIGHT POLE, ALUMINUM, TRANSFORMER BASE, 45 FT. M.H., 10 FT. DAVIT ARM	EACH	108
83017600	LIGHT POLE, ALUMINUM, TRANSFORMER BASE, 45 FT. M.H., 15 FT. DAVIT ARM	EACH	8
83600200	LIGHT POLE FOUNDATION, 24" DIAMETER	FOOT	1,160
83600215	LIGHT POLE FOUNDATION, 24" DIAMETER, OFFSET	FOOT	225
Z0048665	RAILROAD PROTECTIVE LIABILITY INSURANCE	L SUM	1
Z0076600	TRAINEES	HOURL	500
X0325379	DIRECTIONAL BORING	FOOT	23,369
XX006352	LUMINAIRE, SODIUM VAPOR, HORIZONTAL MOUNT, 400 WATT (SPECIAL)	EACH	115
XX006825	LIGHTING UNIT, 30 FT. M.H., 250 WATT LUMINAIRE	EACH	21
XX007487	LUMINAIRE, SODIUM VAPOR, HORIZONTAL MOUNT, 250 WATT (SPECIAL)	EACH	1
XX007488	LIGHT POLE FOUNDATION METAL, 11.5" BOLT CIRCLE, 8" X 6"	EACH	21

△

△ Y080

SPECIFICATIONS, STANDARDS AND SPECIAL PROVISIONS

- ALL REFERENCES TO "STANDARD SPECIFICATIONS" IN THESE GENERAL NOTES SHALL BE INTERPRETED TO MEAN THE "STANDARD SPECIFICATIONS FOR ROAD AND BRIDGE CONSTRUCTION", ADOPTED BY THE ILLINOIS DEPARTMENT OF TRANSPORTATION ON JANUARY 1, 2007.
- ALL CONSTRUCTION SHALL BE IN ACCORDANCE WITH THE "STANDARD SPECIFICATIONS"; THE "SUPPLEMENTAL SPECIFICATIONS AND RECURRING SPECIAL PROVISIONS", ADOPTED JANUARY 1, 2007; THE LATEST EDITION OF THE "ILLINOIS MANUAL ON UNIFORM TRAFFIC CONTROL DEVICES FOR STREETS AND HIGHWAYS"; THE "SPECIAL PROVISIONS AND IDOT STANDARD DRAWINGS" INCLUDED IN THE CONTRACT DOCUMENTS; NATIONAL ELECTRICAL CODE (NEC) 2008 EDITION; AND THE ILLUMINATING ENGINEERING SOCIETY OF NORTH AMERICA (IESNA) "AMERICAN NATIONAL STANDARD PRACTICE FOR ROADWAY LIGHTING" (RP-8-00).
- ANY REFERENCE TO "STANDARD" THROUGHOUT THE PLANS, SPECIAL PROVISIONS OR THESE GENERAL NOTES SHALL BE INTERPRETED TO MEAN THE LATEST VERSION OF THAT IDOT STANDARD DRAWING.
- ALL TRAFFIC CONTROL AND OTHER ADVISORY SIGNS NEEDED FOR CONSTRUCTION ARE TO BE FURNISHED BY THE CONTRACTOR IN ACCORDANCE WITH SECTION 700 OF THE "STANDARD SPECIFICATIONS".
- ALL REFERENCES TO "ENGINEER" SHALL BE INTERPRETED TO MEAN THE RESIDENT ENGINEER. ALL REFERENCES TO "VILLAGE" SHALL BE INTERPRETED TO MEAN THE VILLAGE OF ELK GROVE VILLAGE.

LANDSCAPING

- WHEN DIRECTED BY THE ENGINEER, SUPPLEMENTAL WATERING SHALL BE APPLIED TO ALL SODDED AREAS PRIOR TO FINAL ACCEPTANCE, AT A RATE SPECIFIED BY THE ENGINEER AND IN ACCORDANCE WITH THE "STANDARD SPECIFICATIONS".

UTILITIES

- THE CONTRACTOR SHALL COOPERATE WITH THE VILLAGE IN ANY UNDERGROUND UTILITY CONSTRUCTION THAT THE VILLAGE MAY WANT TO INITIATE DURING THE CONTRACTOR'S OPERATIONS.
- THE CONTRACTOR SHALL COORDINATE CONSTRUCTION ACTIVITIES WITH UTILITY COMPANIES. THE LOCATIONS OF PUBLIC OR PRIVATE UTILITIES SHOWN ON THE PLANS ARE APPROXIMATE, AND THE ENGINEER DOES NOT GUARANTEE THEIR ACCURACY. THE CONTRACTOR WILL BE REQUIRED TO ASCERTAIN THE EXACT LOCATIONS OF SUCH UTILITIES AND EXERCISE CARE DURING HIS CONSTRUCTION OPERATIONS SO AS NOT TO DAMAGE THEM, IN ACCORDANCE WITH THE SPECIAL PROVISIONS AND ARTICLE 107.31 OF THE "STANDARD SPECIFICATIONS". THE CONTRACTOR SHALL BE RESPONSIBLE FOR CONTACTING THE OWNERS OF ALL EXISTING UTILITIES SO THAT THEIR FACILITIES MAY BE LOCATED AND ADJUSTED OR MOVED, IN NECESSARY, PRIOR TO THE START OF CONSTRUCTION OPERATIONS.
- THE CONTRACTOR SHALL BE RESPONSIBLE FOR THE PROTECTION OF ALL UNDERGROUND OR SURFACE UTILITIES EVEN THOUGH THEY MAY NOT BE SHOWN ON THE PLANS. ANY UTILITY THAT IS DAMAGED DURING CONSTRUCTION SHALL BE REPAIRED OR REPLACED TO THE SATISFACTION OF THE ENGINEER AND THE VILLAGE. THIS WORK SHALL BE AT THE CONTRACTOR'S EXPENSE.
- COORDINATION OF ANY UTILITY WORK INVOLVED IN THE CONSTRUCTION AREA WILL BE DISCUSSED AT THE PRECONSTRUCTION CONFERENCE.
- BEFORE STARTING ANY EXCAVATION, THE CONTRACTOR SHALL CALL J.U.L.I.E. AT (800) 892-0123 OR 811 FOR FIELD LOCATIONS OF BURIED ELECTRIC, TELEPHONE AND GAS UTILITIES. 48 HOUR NOTIFICATION IS REQUIRED.
- THE CONTRACTOR SHALL RECEIVE NO ADDITIONAL COMPENSATION FOR CONSTRUCTION STAGING NECESSARY TO ACCOMMODATE UTILITY RELOCATION OR ADJUSTMENT, AND/OR FOR DELAYS CAUSED BY UTILITY RELOCATION OR ADJUSTMENT.
- IT IS THE CONTRACTOR'S RESPONSIBILITY TO LOCATE EXISTING TRAFFIC SIGNAL CABLES AND CONDUITS.



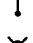
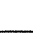
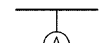
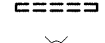
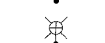


PERMITS

- THE CONTRACTOR SHALL BE RESPONSIBLE FOR OBTAINING ALL NECESSARY PERMITS AND CONTRACT OR PERMIT BONDS FROM THE VILLAGE OF ELK GROVE VILLAGE, COOK COUNTY OR ANY OTHER AGENCY THAT REQUIRES IT. ANY COSTS INCURRED BY THE CONTRACTOR WILL BE INCLUDED IN THIS CONTRACT.
- INITIAL PLAN PERMIT FOR COOK COUNTY HAS BEEN APPLIED FOR. CONTRACTOR SHALL PROVIDE NECESSARY BOND AND INSURANCE, AND THE ASSOCIATED COSTS SHALL BE INCLUDED IN THIS CONTRACT.

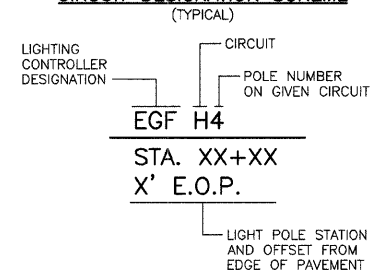
MISCELLANEOUS

- IT SHALL BE THE CONTRACTOR'S RESPONSIBILITY TO VERIFY ALL DIMENSIONS AND CONDITIONS IN THE FIELD PRIOR TO ORDERING MATERIALS AND BEGINNING CONSTRUCTION.
- THE CONTRACTOR SHALL PROVIDE AND INSTALL 2 WEIGHTED SANDBAGS ON ANY TYPE I OR TYPE II BARRICADE USED (1 SANDBAG SHALL BE PLACED ACROSS EACH BOTTOM RAIL).
- PAY ITEMS IN THE SUMMARY OF QUANTITIES HAVE BEEN ESTIMATED. IF, IN THE ENGINEER'S OPINION, ANY WORK IS NOT REQUIRED, THAT ITEM WILL BE DEDUCTED FROM THE CONTRACT AND NO ADDITIONAL COMPENSATION WILL BE ALLOWED.
- ALL WASTE MATERIAL SHALL BE LEGALLY DISPOSED OF OUTSIDE THE LIMITS OF THE R.O.W. AT THE CONTRACTOR'S EXPENSE. THE CONTRACTOR SHALL BE RESPONSIBLE FOR PROMPT CLEANUP AND DISPOSAL OF ANY AND ALL DEBRIS GENERATED BY OR INCIDENTAL TO WORK COVERED BY THIS CONTRACT.
- THE CONTRACTOR SHALL COMPLY WITH ALL LOCAL CODES, ORDINANCES AND REGULATIONS CONCERNING MAINTENANCE OF TRAFFIC.
- THE CABLE TRENCH SHALL BE BACKFILLED AND FIRMLY COMPACTED BEFORE ANY LIGHT STANDARD IS ERECTED.
- ALL PUSHED CONDUITS ON PLANS SHALL BE DIRECTIONAL BORE AND QUANTITY SHALL BE PAID FOR AS CONDUIT PUSHED.
- INSTALLATION METHOD OF THE UNIT DUCT SHALL BE DIRECTIONAL BORING. NO ADDITIONAL COMPENSATION WILL BE ALLOWED FOR TRENCHING WHEN DIRECTIONAL BORING IS NOT POSSIBLE BECAUSE OF UTILITY OR OTHER CONFLICTS.
- IT SHALL BE THE CONTRACTOR'S RESPONSIBILITY TO MARK THE PROPOSED LOCATIONS AND ESTABLISH FINISHED GRADE ELEVATION WITH THE TOP OF FOUNDATION OF ALL LIGHT POLES FOR EXAMINATION AND CONFIRMATION WITH THE ENGINEER PRIOR TO INSTALLATION OF LIGHTING FOUNDATIONS.
- GROUNDING CONNECTIONS AT THE FOUNDATION SHALL BE EXOTHERMICALLY WELDED AND SHALL BE INSPECTED AND APPROVED BY THE RESIDENT ENGINEER PRIOR TO POURING CONCRETE OR BACKFILLING AS APPLICABLE.
- EQUIPMENT GROUND CONDUCTORS SHALL BE SPLICED AND BONDED AT EACH LIGHT POLE OR OTHER PIECE OF EQUIPMENT.
- THE INSTALLATION OF BURIED WARNING TAPE, SPECIFIED AS PART OF "TRENCH AND BACKFILL FOR ELECTRICAL WORK" SHALL BE INSPECTED AND APPROVED BY THE RESIDENT ENGINEER.
- ALL STREET LIGHT POLES ON DEVON AVENUE SHALL BE SET BACK A MINIMUM OF 6 FEET FROM THE BACK OF CURB.
- NO POLES SHALL BE ERECTED UNTIL THE RESPECTIVE FOUNDATIONS HAVE CURED, AS APPROVED BY ENGINEER.
- CARE IS TO BE TAKEN AS NOT TO DAMAGE ANY OF THE EXISTING TRAFFIC SIGNAL CONDUITS, DETECTORS AND EQUIPMENT. IF ANY OF THE TRAFFIC SIGNAL CONDUIT AND/OR EQUIPMENT IS DAMAGED, THE CONTRACTOR SHALL REPAIR AND/OR REPLACE THE CONDUIT AND/OR EQUIPMENT AT NO COST TO THE COUNTY, STATE OR THE VILLAGE.
- THE CONTRACTOR SHALL MAKE SPECIAL NOTE OF THE REQUIREMENTS FOR WIRE MARKERS AND SHALL TAG ALL WIRE MARKERS ACCORDINGLY.
- CONDUIT AND UNIT DUCT MUST BE POSITIONED IN THE FIELD TO AVOID CONFLICT WITH TREES, BUSHES, DRAINS AND OTHER UTILITIES AND LANDSCAPING.
- ALL DISTURBED AREA WHERE RESTORATION IS NOT COVERED BY APPLICABLE SECTIONS OF THE SPECIAL PROVISIONS MUST BE RESTORED TO THE SATISFACTION OF THE ENGINEER. THE WORK MUST BE CONSIDERED INCIDENTAL TO THE CONTRACT. SEPARATE PAYMENT WILL NOT BE MADE.

LEGEND

-  PROPOSED LITHONIA LIGHTING UNIT
400 WATT HPS, 240V, MC III, 45' MH, 10' MA
-  PROPOSED LITHONIA LIGHTING UNIT
400 WATT HPS, 240V, MC III, 45' MH, 15' MA
-  PROPOSED LITHONIA LIGHTING UNIT
250 WATT HPS, 240 V, MC III, 45' MH, 10' MA
-  PROPOSED KIM LIGHTING UNIT
250 WATT HPS, 240V, MC III, 30' MH, 0.67' MA
-  UNIT DUCT, 600V, 3-1C NO.4, 1/C NO.4 GROUND, (XLP-TYPE USE), 1 1/4" DIA. POLYETHYLENE
-  UNIT DUCT, 600V, 3-1C NO.8, 1/C NO.8 GROUND, (XLP-TYPE USE), 1" DIA. POLYETHYLENE
-  PROPOSED GALVANIZED STEEL CONDUIT
SIZE AS SPECIFIED
-  EXISTING KIM LIGHTING UNIT
250 WATT HPS, 120V, MC III, 30' MH, 0.67' MA
-  EXISTING KIM LIGHTING UNIT
150 WATT HPS, 120V, MC III, 25' MH, 0.67' MA

CIRCUIT DESIGNATION SCHEME

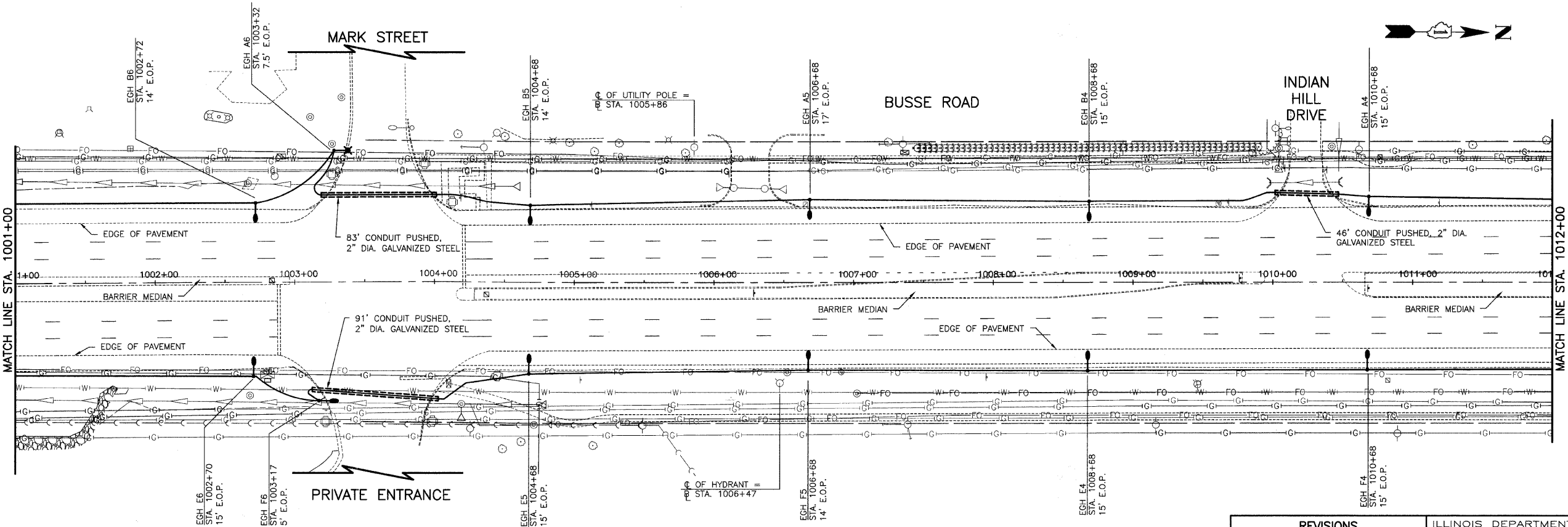
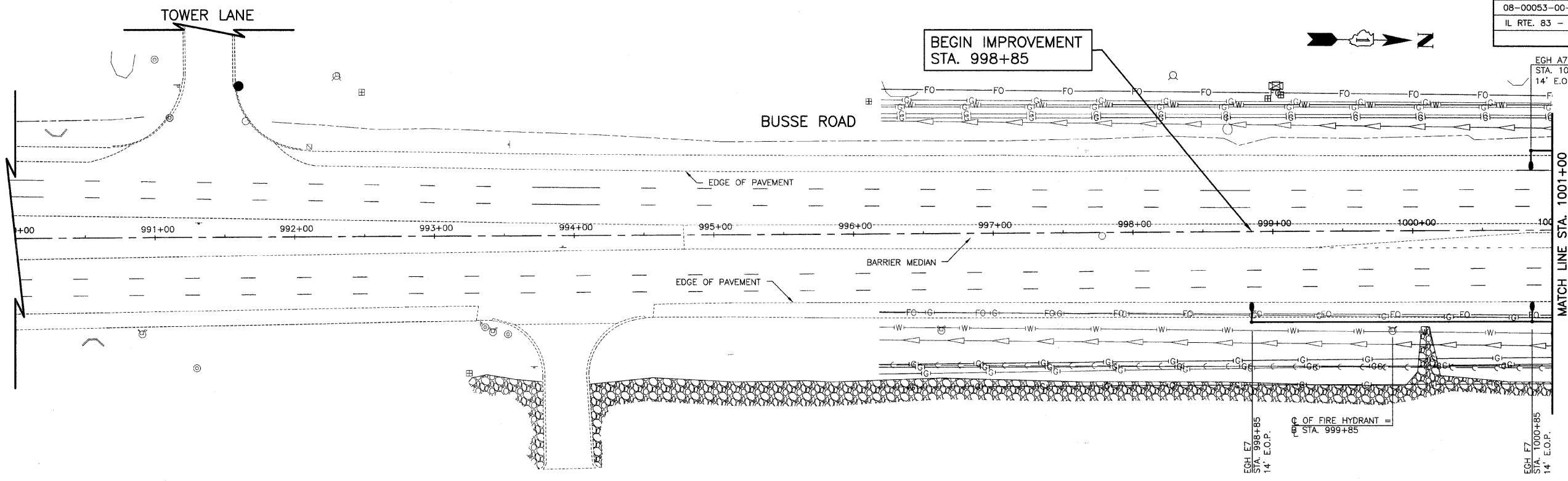


REVISIONS	
NAME	DATE

ILLINOIS DEPARTMENT OF TRANSPORTATION
ILLINOIS ROUTE 83
ROADWAY LIGHTING
**SUMMARY OF QUANTITIES,
GENERAL NOTES AND LEGEND**

DATE: 05/14/2008
CHECKED BY: D.N.M.

SECTION	COUNTY	TOTAL SHEETS	SHEET NO.
08-00053-00-LT	COOK/DUPAGE	15	3
IL RTE. 83 - STA. 998+85 TO STA. 1012+00			
LIGHTING PLAN			



REVISIONS	
NAME	DATE

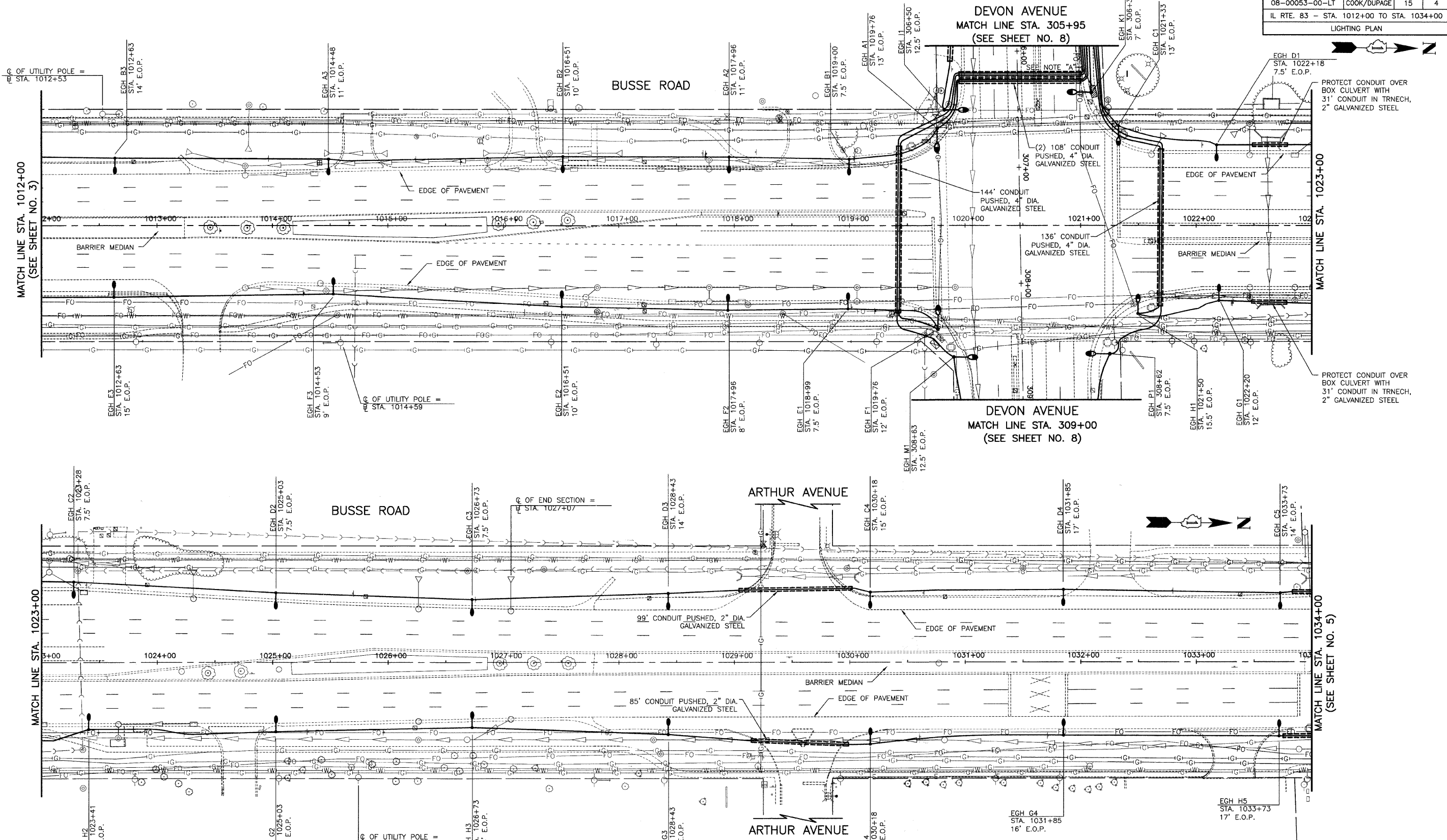
ILLINOIS DEPARTMENT OF TRANSPORTATION
ILLINOIS ROUTE 83
ROADWAY LIGHTING
LIGHTING PLAN

ILLINOIS ROUTE 83 (BUSSE ROAD)
STA. 1000+85 TO STA. 1012+00

DATE: 05/14/2008
CHECKED BY: D.N.M.

SCALE IN FEET

SECTION	COUNTY	TOTAL SHEETS	SHEET NO.
08-00053-00-LT	COOK/DUPAGE	15	4
IL RTE. 83 - STA. 1012+00 TO STA. 1034+00			
LIGHTING PLAN			



NOTES:
 A SIDEWALK REMOVAL; PORTLAND CEMENT CONCRETE SIDEWALK 5 INCH

REVISIONS	
NAME	DATE

ILLINOIS DEPARTMENT OF TRANSPORTATION
 ILLINOIS ROUTE 83
 ROADWAY LIGHTING
LIGHTING PLAN

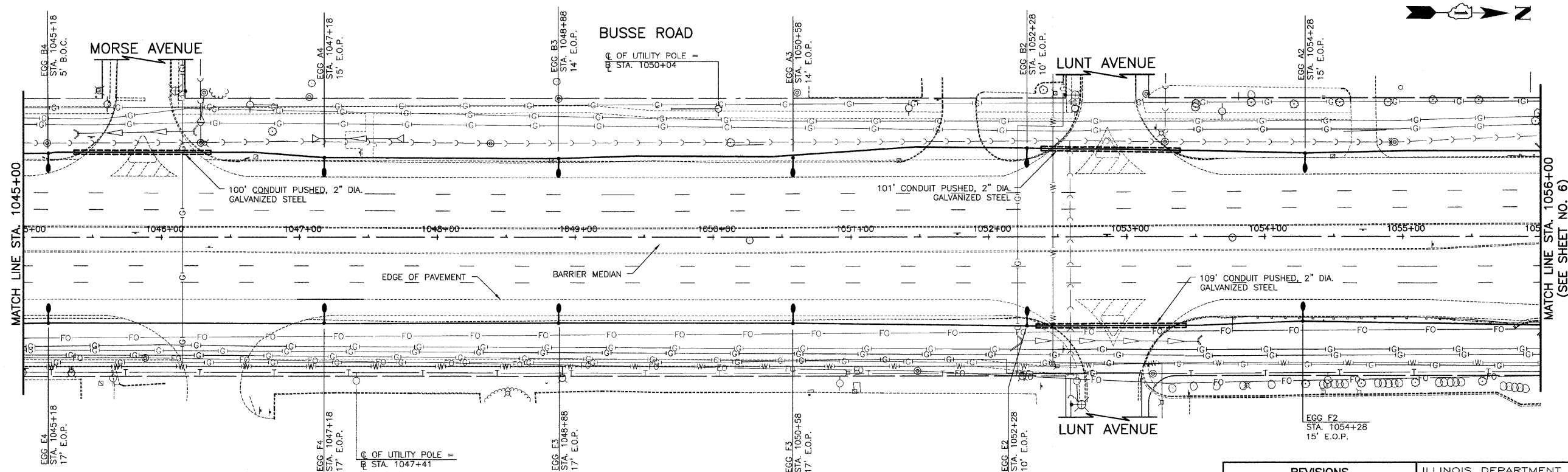
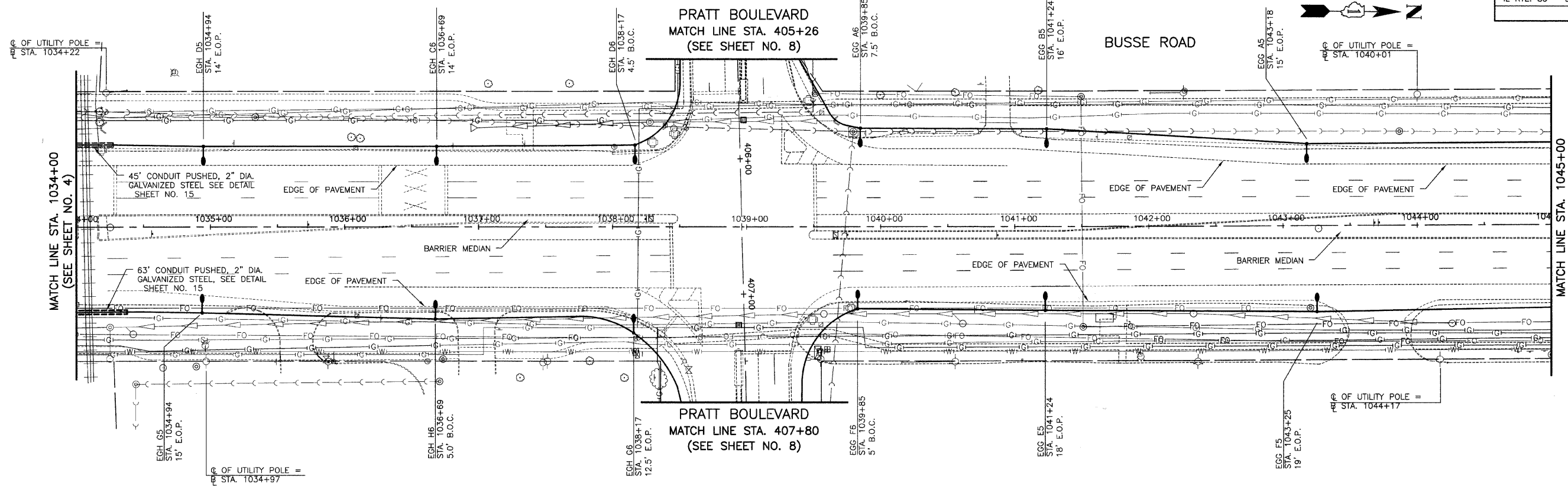
ILLINOIS ROUTE 83 (BUSSE ROAD)
 STA. 1012+00 TO STA. 1034+00

DATE: 05/14/2008
 CHECKED BY: D.N.M.

SCALE IN FEET



SECTION	COUNTY	TOTAL SHEETS	SHEET NO.
08-00053-00-LT	COOK/DUPAGE	15	5
IL RTE. 83 - STA. 1034+00 TO STA. 1056+00			
LIGHTING PLAN			



REVISIONS	
NAME	DATE

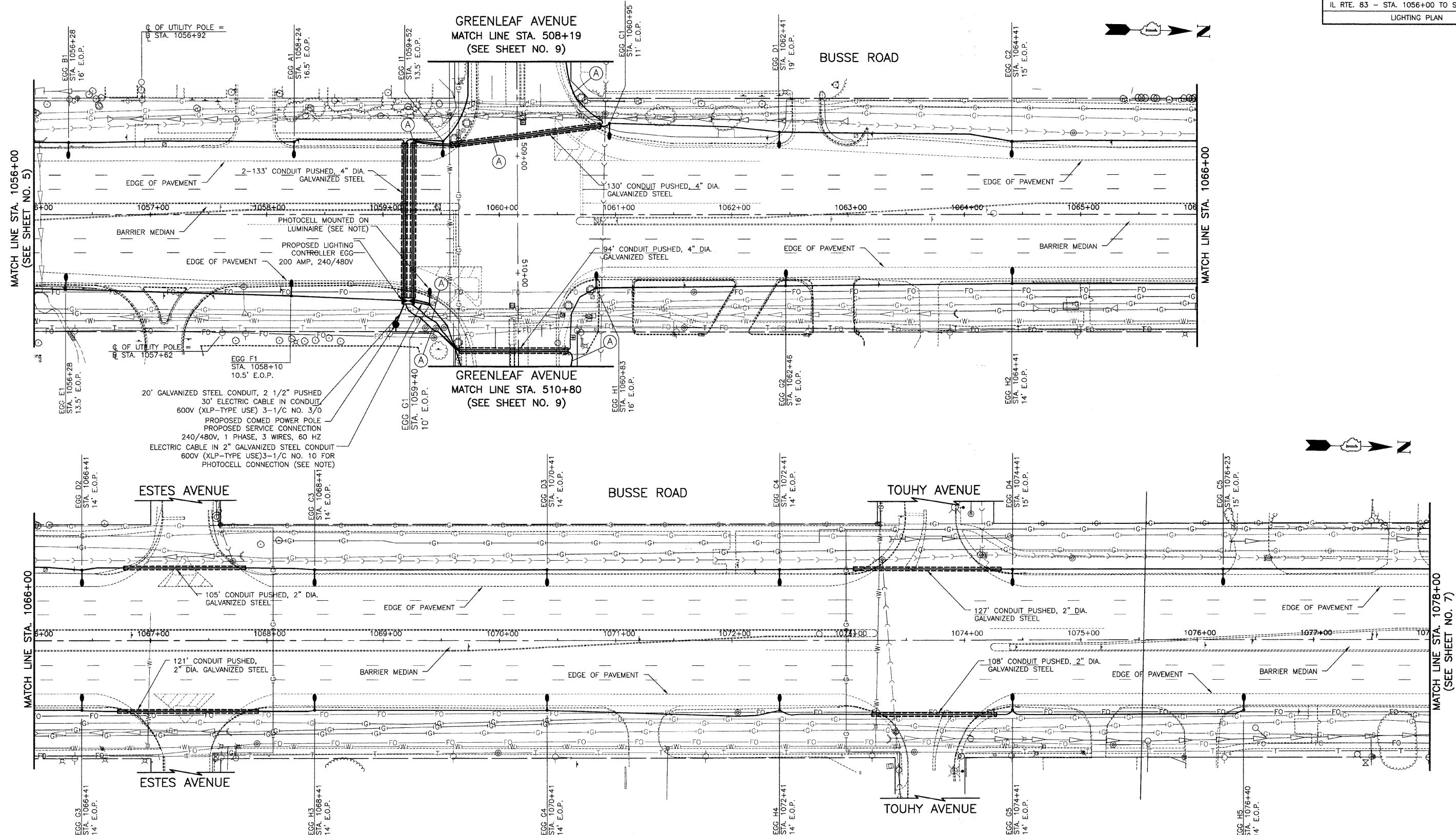
ILLINOIS DEPARTMENT OF TRANSPORTATION
 ILLINOIS ROUTE 83
 ROADWAY LIGHTING
LIGHTING PLAN

ILLINOIS ROUTE 83 (BUSSE ROAD)
 STA. 1034+00 TO STA. 1056+00

DATE: 05/14/2008
 CHECKED BY: D.N.M.

SCALE IN FEET

SECTION	COUNTY	TOTAL SHEETS	SHEET NO.
08-00053-00-LT	COOK/DUPAGE	15	6
IL RTE. 83 - STA. 1056+00 TO STA. 1078+00			
LIGHTING PLAN			



20' GALVANIZED STEEL CONDUIT, 2 1/2\"/>

NOTE:

- ALL PHOTOCCELL MATERIAL AND INSTALLATION SHALL BE PART OF THE PAY ITEM "LIGHTING CONTROLLER, SPECIAL."
- ALL UNIT DUCT IS 600V, 3-1C NO.4, 1/C NO.4 GROUND, (XLP-TYPE USE), 1 1/4" DIA. POLYETHYLENE EXCEPT WHERE NOTED WITH (A), WHICH IS UNIT DUCT, 600V, 3-1C NO.8, 1/C NO.8 GROUND, (XLP-TYPE USE), 1" DIA. POLYETHYLENE

REVISIONS	
NAME	DATE

ILLINOIS DEPARTMENT OF TRANSPORTATION
 ILLINOIS ROUTE 83
 ROADWAY LIGHTING
LIGHTING PLAN

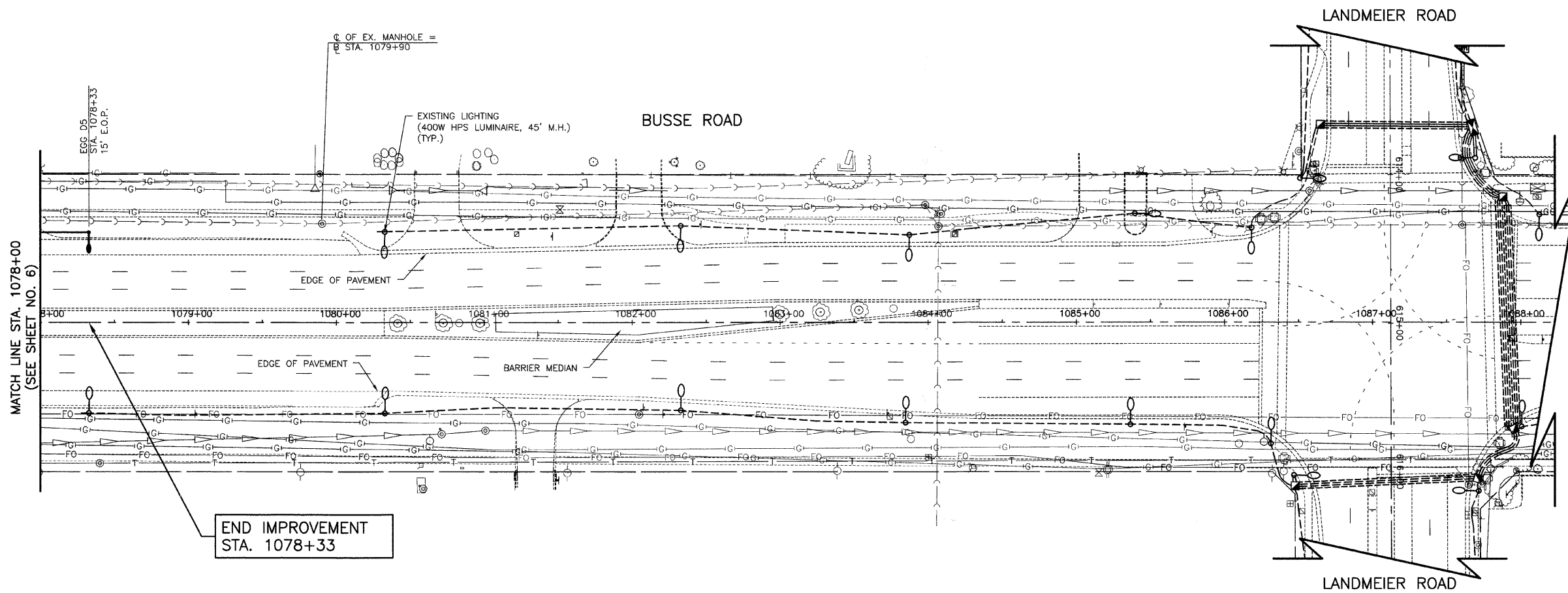
ILLINOIS ROUTE 83 (BUSSE ROAD)
 STA. 1056+00 TO STA. 1078+00

DATE: 05/14/2008
 CHECKED BY: D.N.M.

SCALE IN FEET



SECTION	COUNTY	TOTAL SHEETS	SHEET NO.
08-00053-00-LT	COOK/DUPAGE	15	7
IL RTE. 83 - STA. 1078+00 TO STA. 1078+33			
LIGHTING PLAN			



REVISIONS	
NAME	DATE

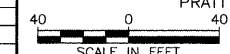
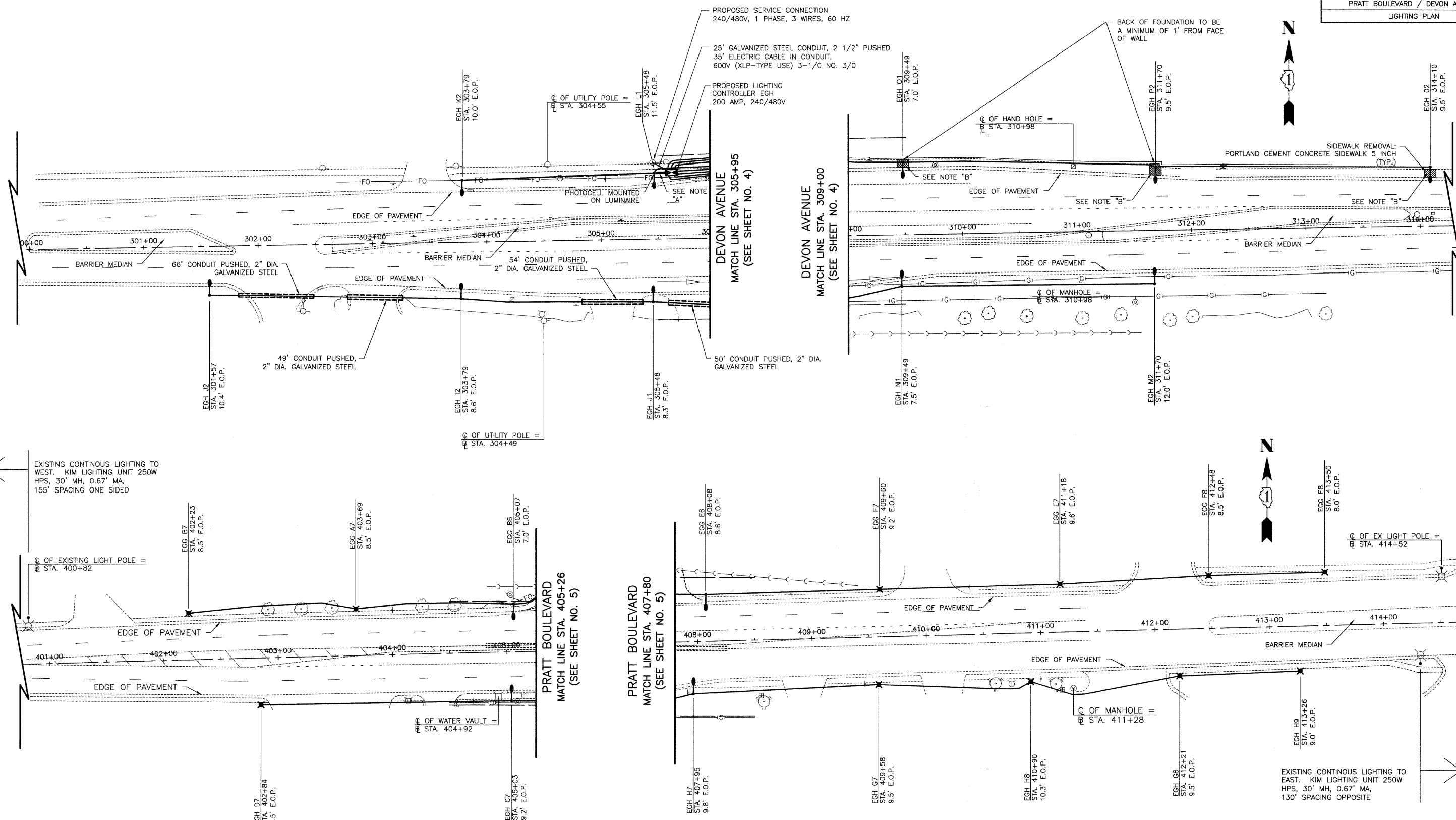
ILLINOIS DEPARTMENT OF TRANSPORTATION
 ILLINOIS ROUTE 83
 ROADWAY LIGHTING
LIGHTING PLAN

ILLINOIS ROUTE 83 (BUSSE ROAD)
 STA. 1078+00 TO STA. 1078+33

DATE: 05/14/2008
 CHECKED BY: D.N.M.

SCALE IN FEET

SECTION	COUNTY	TOTAL SHEETS	SHEET NO.
08-00053-00-LT	COOK/DUPAGE	15	8
PRATT BOULEVARD / DEVON AVENUE			
LIGHTING PLAN			



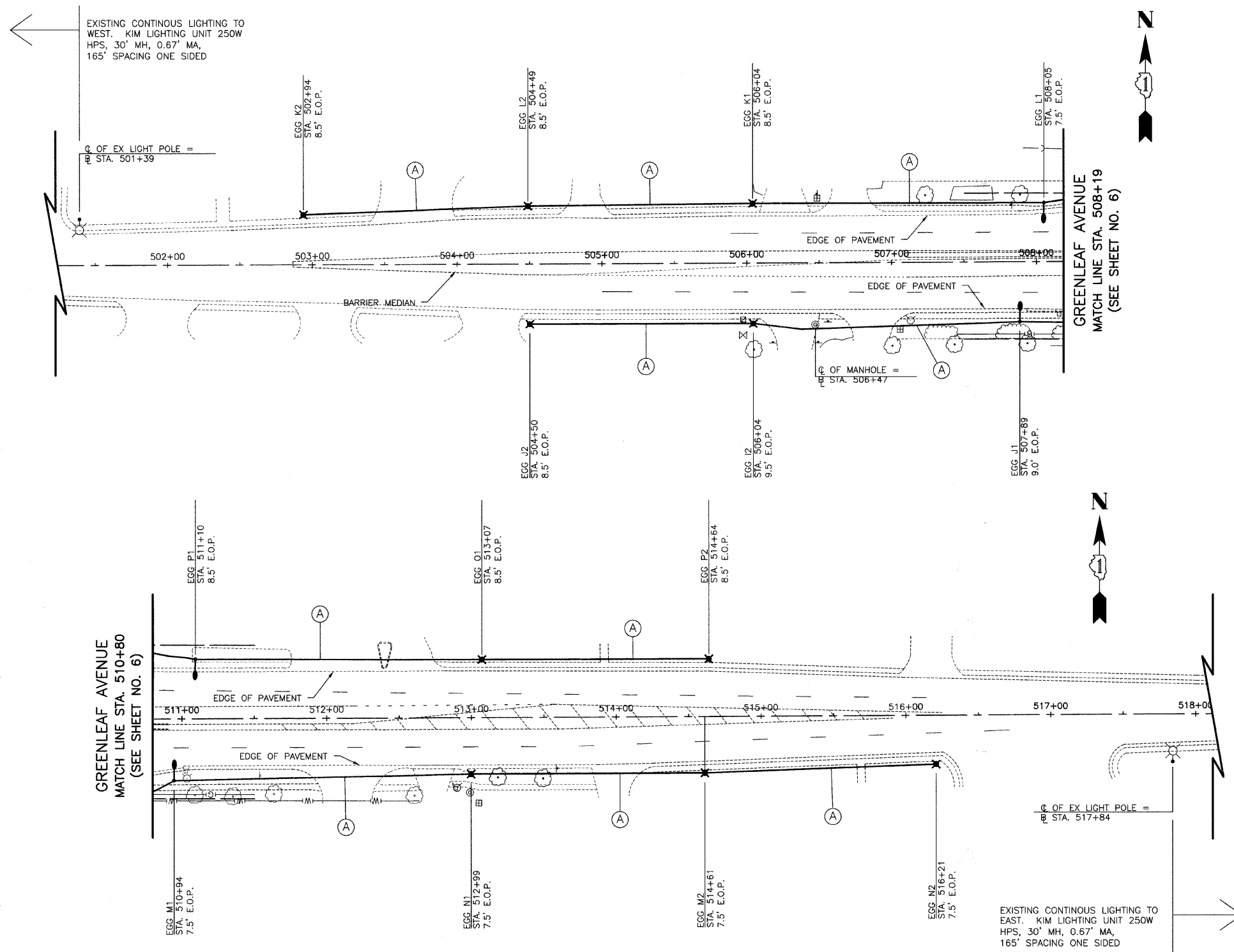
- NOTES:
- ALL PHOTOCELL MATERIAL AND INSTALLATION SHALL BE PART OF THE PAY ITEM "LIGHTING CONTROLLER, SPECIAL."
 - A ELECTRIC CABLE IN 2" GALVANIZED STEEL CONDUIT 600V (XLP-TYPE USE) 3-1/C NO. 10 FOR PHOTOCELL CONNECTION
 - B SIDEWALK REMOVAL; PORTLAND CEMENT CONCRETE SIDEWALK 5 INCH

REVISIONS	
NAME	DATE

ILLINOIS DEPARTMENT OF TRANSPORTATION
 ILLINOIS ROUTE 83
 ROADWAY LIGHTING
LIGHTING PLAN
 DEVON AVENUE
 PRATT BOULEVARD
 DATE: 05/14/2008
 CHECKED BY: D.N.M.



SECTION	COUNTY	TOTAL SHEETS	SHEET NO.
08-00053-00-LT	COOK/DUPAGE	15	9
GREENLEAF AVENUE			
LIGHTING PLAN			



NOTE:

1. ALL UNIT DUCT IS 600V, 3-1C NO.4, 1/C NO.4 GROUND, (XLP-TYPE USE), 1 1/4" DIA. POLYETHYLENE EXCEPT WHERE NOTED WITH (A), WHICH IS UNIT DUCT, 600V, 3-1C NO.8, 1/C NO.8 GROUND, (XLP-TYPE USE), 1" DIA. POLYETHYLENE

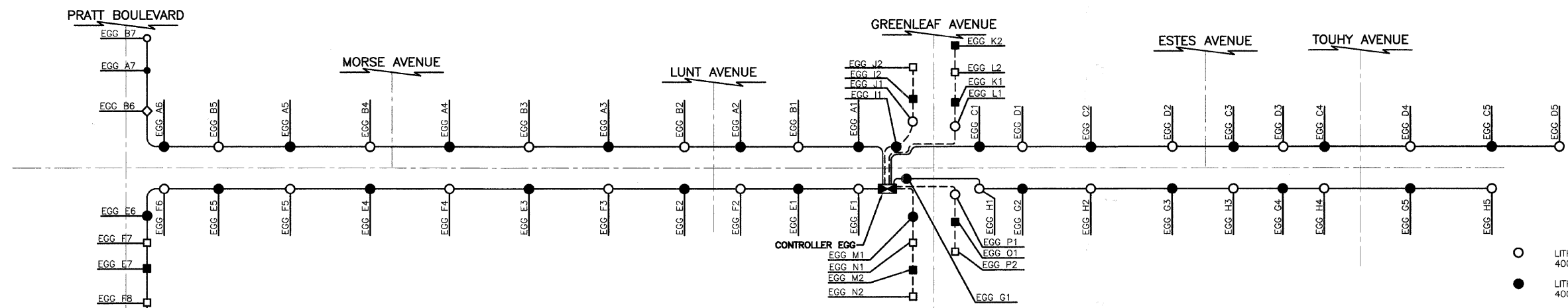
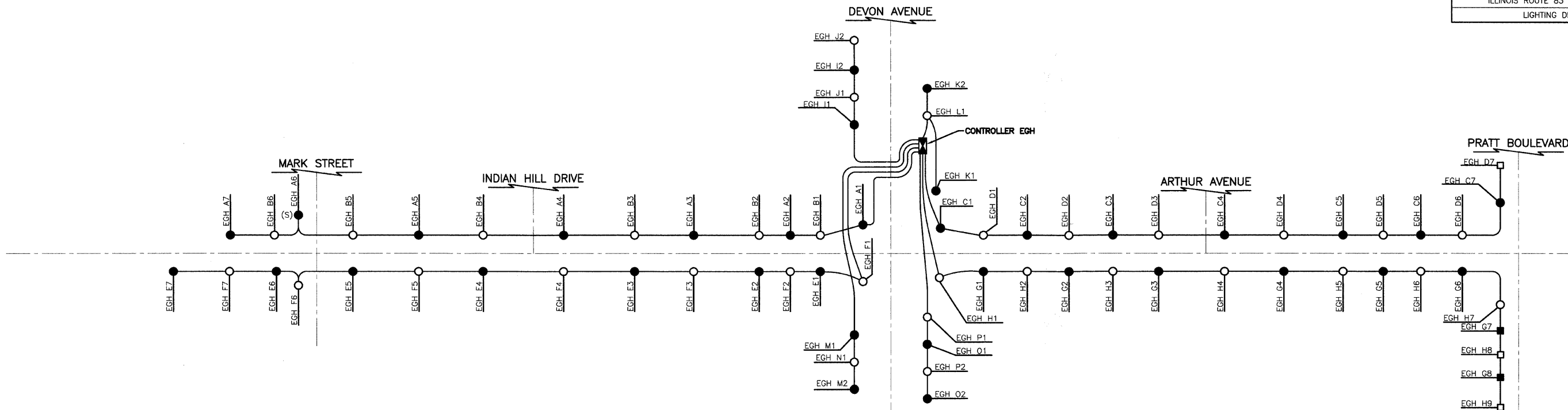
REVISIONS	
NAME	DATE

ILLINOIS DEPARTMENT OF TRANSPORTATION
ILLINOIS ROUTE 83
ROADWAY LIGHTING
LIGHTING PLAN
GREENLEAF AVENUE

SCALE IN FEET

DATE: 05/14/2008
CHECKED BY: D.N.M.

SECTION	COUNTY	TOTAL SHEETS	SHEET NO.
08-00053-00-LT	COOK/DUPAGE	15	10
ILLINOIS ROUTE 83 (BUSSE ROAD)			
LIGHTING DETAILS			



CONTROLLER EGH
CIRCUIT LOAD TABLE

CIRCUIT NO.	TOTAL FIXTURE AMPS	KW LOAD
A	13.0	3.1
B	11.7	2.8
C	13.65	2.8
D	11.05	2.7
E	13.65	3.3
F	13.65	3.3
G	14.95	3.6
H	16.25	3.9
I	3.90	0.9
J	3.90	0.9
K	3.90	0.9
L	1.95	0.9
M	3.90	0.9
N	1.95	0.5
O	3.90	0.9
P	3.90	0.9
TOTAL	139.1	33.2

CONTROLLER EGG
CIRCUIT LOAD TABLE

CIRCUIT NO.	TOTAL FIXTURE AMPS	KW LOAD
A	13.00	3.1
B	13.00	3.1
C	9.75	2.3
D	9.75	2.3
E	14.30	3.4
F	14.30	3.4
G	9.75	2.3
H	9.75	2.3
I	3.25	0.8
J	3.25	0.8
K	2.60	0.6
L	3.25	0.8
M	3.25	0.8
N	2.60	0.6
O	1.30	0.3
P	3.25	0.8
TOTAL	116.4	27.7

400W LUMINAIRE = 1.95A
250W LUMINAIRE = 1.30A

400W LUMINAIRE = 1.95A
250W LUMINAIRE = 1.30A

- LEGEND**
- LITHONIA LUMINAIRE, SODIUM VAPOR 400W, 240V ON RED WIRE
 - LITHONIA LUMINAIRE, SODIUM VAPOR 400W, 240V ON BLACK WIRE
 - (S)○ LITHONIA LUMINAIRE, SODIUM VAPOR 250W, 240V ON RED WIRE
 - KIM LUMINAIRE, SODIUM VAPOR 250W, 240V ON RED WIRE
 - KIM LUMINAIRE, SODIUM VAPOR 250W, 240V ON BLACK WIRE
 - ◻ PROPOSED LIGHTING CONTROLLER 240/480V, 1 φ, 3-WIRE
 - UNIT DUCT, WITH 3-1/8" NO. 4 AND 1-1/8" NO. 4 GROUND, 600V (XLP-TYPE USE) 1 1/4" DIA. POLYETHYLENE
 - - - UNIT DUCT, WITH 3-1/8" NO. 8 AND 1-1/8" NO. 8 GROUND, 600V (XLP-TYPE USE) 1" DIA. POLYETHYLENE

REVISIONS

NAME	DATE

ILLINOIS DEPARTMENT OF TRANSPORTATION
ILLINOIS ROUTE 83
ROADWAY LIGHTING
LIGHTING DETAILS

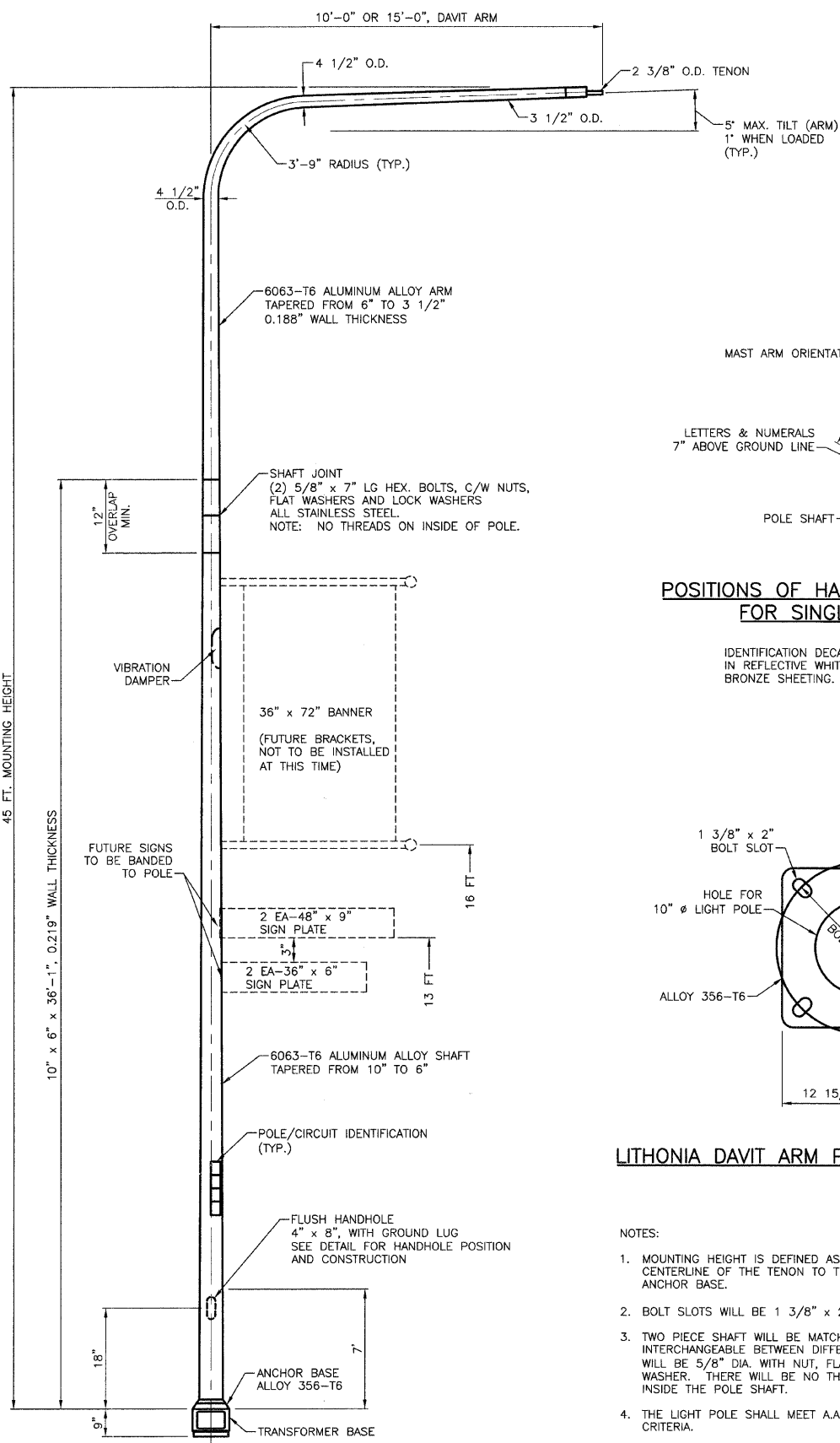
ILLINOIS ROUTE 83
(BUSSE ROAD)

SCALE IN FEET

DATE: 05/14/2008
CHECKED BY: D.N.M.

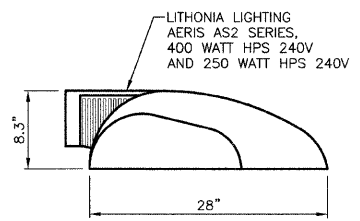


SECTION	COUNTY	TOTAL SHEETS	SHEET NO.
08-00053-00-LT	COOK/DUPAGE	15	11
ILLINOIS ROUTE 83 (BUSSE ROAD)			
LIGHTING DETAILS			

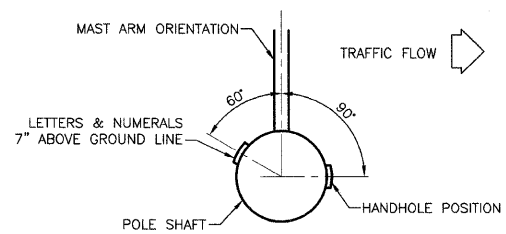


LITHONIA DAVIT ARM POLE

THE POLE SHAFT, DAVIT ARM, TRANSFORMER BASE, AND LUMINAIRE WITH MAST ARM ADAPTER SHALL BE PAINTED IN DARK BRONZE COLOR, POWDER COATED.

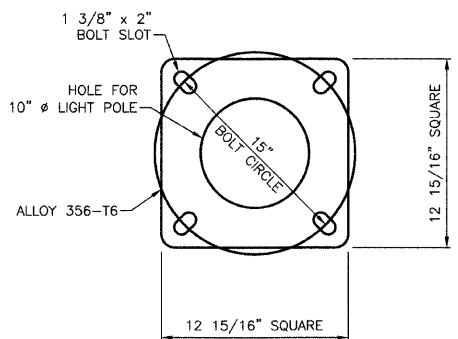


LITHONIA LUMINAIRE



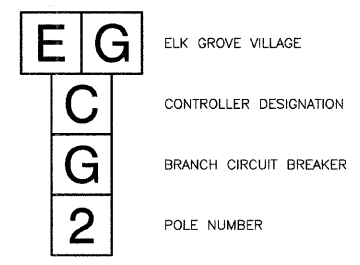
POSITIONS OF HANDHOLE AND POLE NUMBER FOR SINGLE MAST ARM POLES

IDENTIFICATION DECALS - LETTER AND NUMERALS SHALL BE IN REFLECTIVE WHITE ON PRESSURE SENSITIVE REFLECTIVE BRONZE SHEETING.

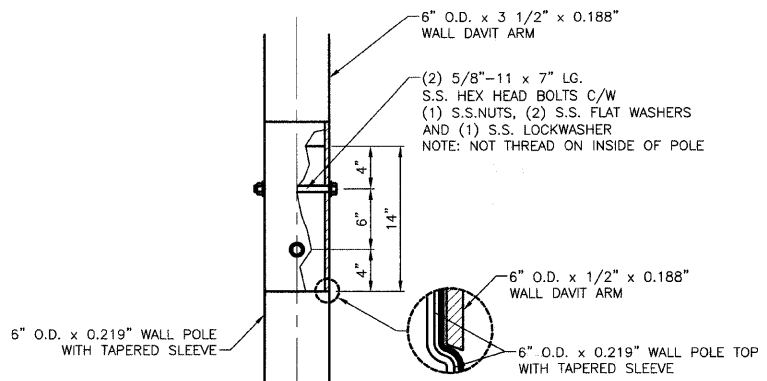


LITHONIA DAVIT ARM POLE BASE PLATE DETAIL

- NOTES:
1. MOUNTING HEIGHT IS DEFINED AS THE DISTANCE FROM THE CENTERLINE OF THE TENON TO THE BOTTOM OF THE ANCHOR BASE.
 2. BOLT SLOTS WILL BE 1 3/8\" x 2\" CENTERED.
 3. TWO PIECE SHAFT WILL BE MATCH MARKED AND INTERCHANGEABLE BETWEEN DIFFERENT UNITS. STUD BOLT WILL BE 5/8\" DIA. WITH NUT, FLAT WASHER, AND LOCK WASHER. THERE WILL BE NO THREADS ON THE BOLT INSIDE THE POLE SHAFT.
 4. THE LIGHT POLE SHALL MEET A.A.S.H.T.O. DESIGN CRITERIA.

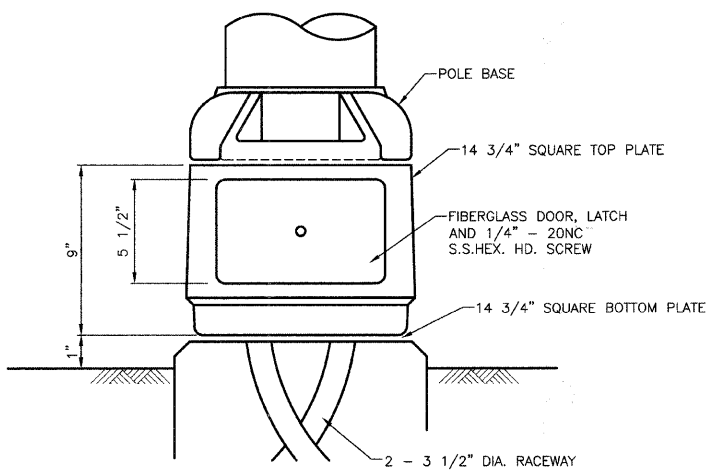


POLE NUMBERING TYP.



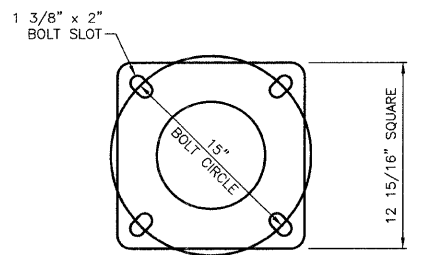
DAVIT ARM CONNECTION

(14\"/>

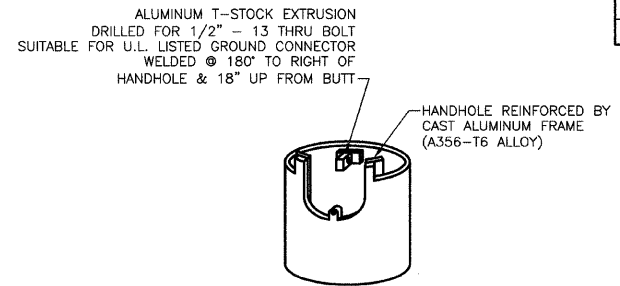


BREAKAWAY DEVICE, TRANSFORMER BASE

THE BREAKAWAY TRANSFORMER BASE SHALL HAVE A LISTING OF APPROVAL BY FHWA COMPLIANCE TO 1985 AASHTO REQUIREMENTS.



TOP/BOTTOM DETAIL TRANSFORMER BASE



HANDHOLE AND GROUND LUG DETAIL

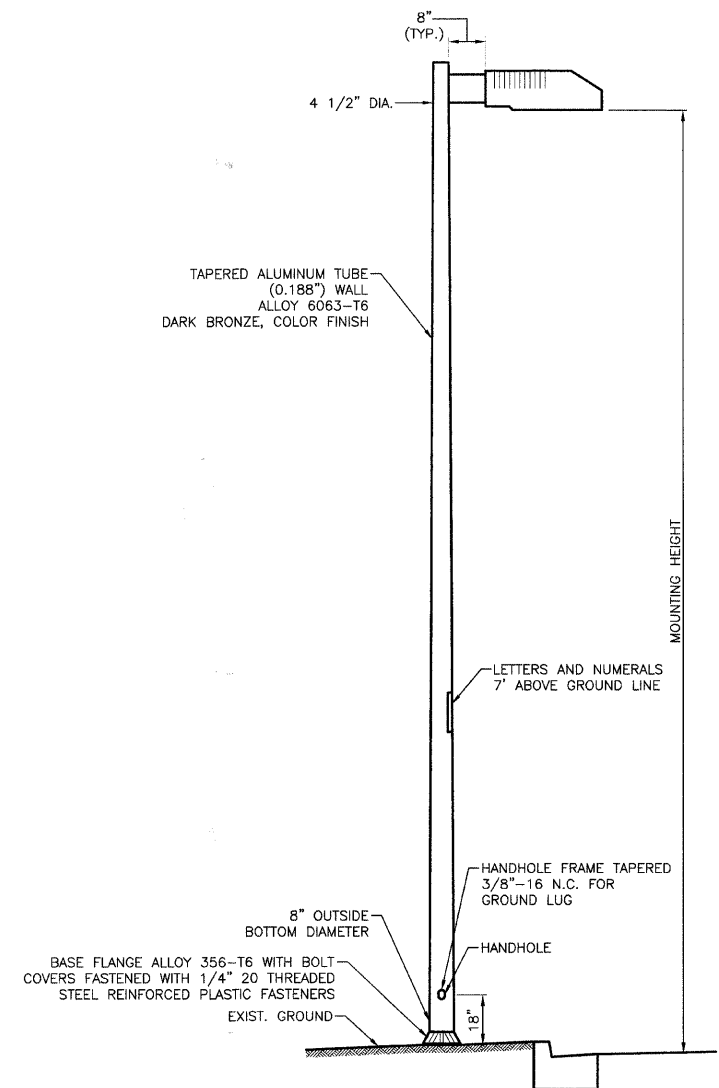
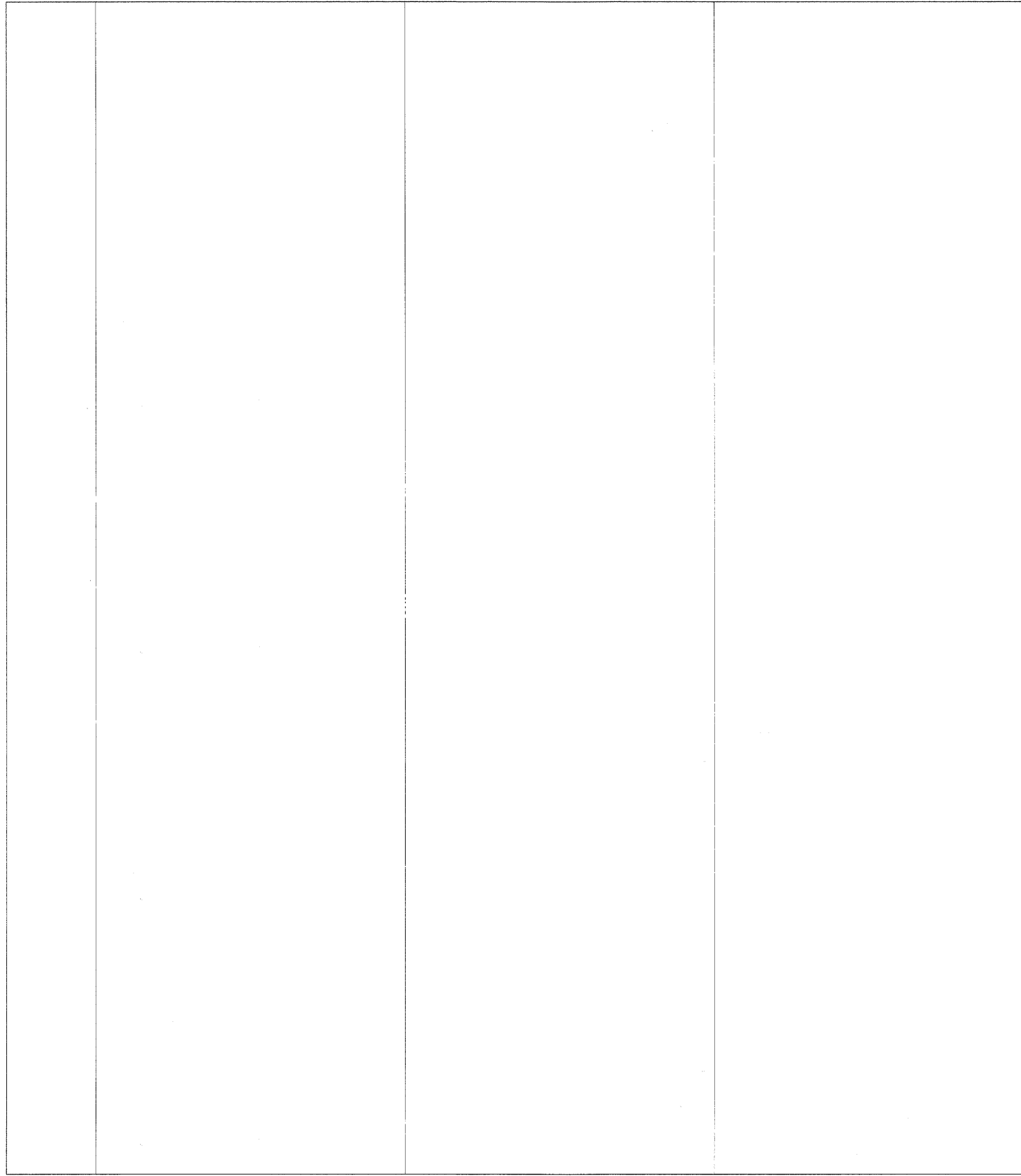
REVISIONS	
NAME	DATE

ILLINOIS DEPARTMENT OF TRANSPORTATION
ILLINOIS ROUTE 83
ROADWAY LIGHTING
LIGHTING DETAILS

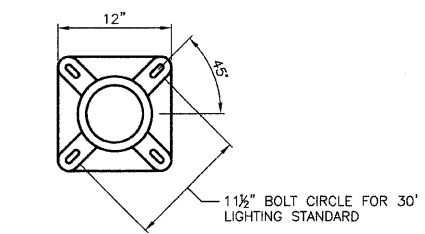
ILLINOIS ROUTE 83
(BUSSE ROAD)

DATE: 05/14/2008
CHECKED BY: D.N.M.

SECTION	COUNTY	TOTAL SHEETS	SHEET NO.
08-00053-00-LT	COOK/DUPAGE	15	12
ILLINOIS ROUTE 83 (BUSSE ROAD)			
LIGHTING DETAILS			



KIM LIGHTING UNIT DETAIL



KIM LIGHTING UNIT ANCHOR BASE DETAIL

30 FT. LIGHT STANDARD

LUMINAIRE:
 KIM LIGHTING - AR3 MODEL (NO SUBSTITUTIONS)
 250 WATT, H.P.S., M-C-III, 240V,
 30 FT. M.H., 8 IN. SUPPORT ARM,
 DARK BRONZE-POWDER COAT FINISH

POLE:
 ROUND TAPERED ALUMINUM,
 KIM-LIGHTING-LTRA30-8188
 DARK BRONZE-POWDER COAT FINISH,
 11-1/2" BOLT CIRCLE, OR APPROVED EQUAL

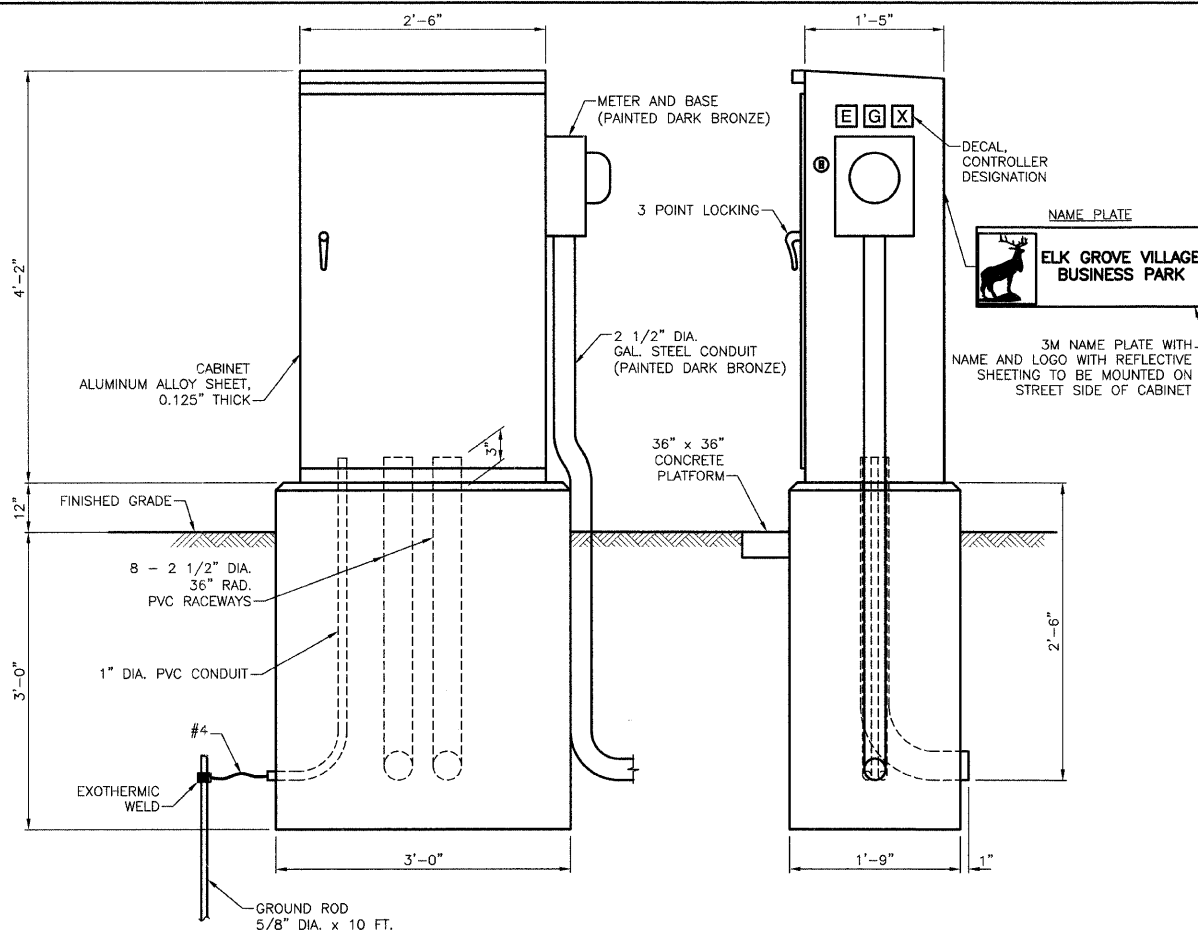
REVISIONS	
NAME	DATE

ILLINOIS DEPARTMENT OF TRANSPORTATION
 ILLINOIS ROUTE 83
 ROADWAY LIGHTING
LIGHTING DETAILS

ILLINOIS ROUTE 83
 (BUSSE ROAD)

DATE: 05/14/2008
 CHECKED BY: D.N.M.

SECTION	COUNTY	TOTAL SHEETS	SHEET NO.
08-00053-00-LT	COOK/DUPAGE	15	13
ILLINOIS ROUTE 83 (BUSSE ROAD)			
LIGHTING DETAILS			



LIGHTING CONTROLLER, SPECIAL
CONTROL CABINET DETAILS

NOTES

THE CABINET SHALL BE FABRICATED FROM 0.125" THICK ALUMINUM ALLOY SHEET AND SHALL BE REINFORCED WITH ALUMINUM ANGLES. THE CABINET DOOR SHALL BE NEMA TYPE 3R CONSTRUCTION WITH NEOPRENE GASKET. THE DOOR SHALL HAVE STAINLESS STEEL HINGES AND THREE POINT LOCKING SYSTEM.

THE CONTRACTOR SHALL REMOVE VEGETATION AND TOPSOIL, LEVEL THE AREA IN FRONT OF THE CONTROL CABINET DOOR AND PLACE LENGTHWISE, PARALLEL TO CONTROL CABINET, A PRECAST PAD, 36" x 36" x 3" MINIMUM SIZE. THE COST OF LABOR AND MATERIALS SHALL BE INCIDENTAL TO THE CONTROL CABINET.

CONTROL WIRE SHALL BE #12 AWG, 600V, TYPE "SIS" STRANDED COPPER GRAY SWITCH BOARD WIRE. THE ENDS OF ALL CONTROL WIRES SHALL BE IDENTIFIED.

ALL WIRING WITHIN THE CABINET SHALL BE COLOR CODED AS INDICATED.
R = RED BL = BLUE W = WHITE
B = BLACK Y = YELLOW G = GREEN

THE ELECTRIC METER BOX SHALL BE MOUNTED ON THE SIDE OF THE CONTROL CABINET, NEAR THE SERVICE POLE AND/OR AS DIRECTED BY THE ENGINEER.

ALL CONTROL CABINET ITEMS SHALL HAVE SUITABLE IDENTIFICATION. OPEN CIRCUIT BREAKERS, CONTACTORS AND OTHER OPEN DEVICES SHALL HAVE PERMANENT SELF STICKING TAGS. DEVICES IN ENCLOSURES SHALL HAVE ENGRAVED 2-COLOR LAMINATED PLASTIC NAMEPLATES ATTACHED TO ENCLOSURES WITH SCREWS. NAMEPLATES SHALL BE ENGRAVED TO CORRESPOND TO DESIGNATIONS ON THE DRAWINGS. INTERNAL CABINET WIRING SHALL BE IDENTIFIED AS INDICATED OR AS DIRECTED BY THE ENGINEER BY MEANS OF SELF-STICKING TAGS APPLIED AT EACH CONNECTED END. IDENTIFICATION SHALL BE MADE BY THE CABINET MANUFACTURER.

ALL WIRING SHALL BE NEATLY DRESSED AND SUPPORTED.

THE HEADS OF CONNECTOR SCREWS SHALL BE PAINTED WHITE FOR NEUTRAL BUSS CONNECTION AND GREEN FOR GROUND BUSS CONNECTORS.

PROVIDE SEALING GROMMETS FOR ALL OPEN WIRING EXTENDED FROM DEVICES IN BOXES WITHIN THE CONTROL CABINET.

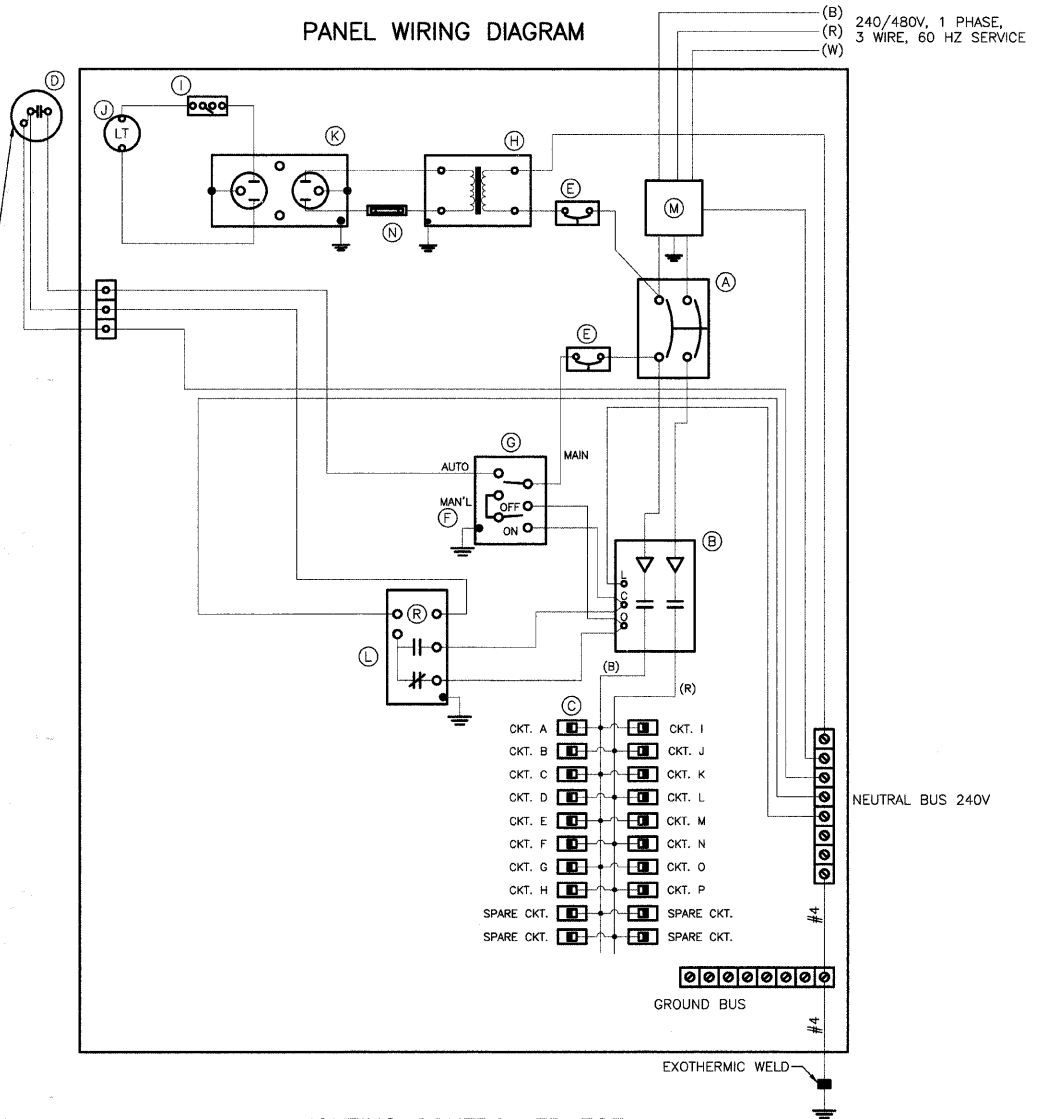
THE CONTROLLER SHALL BE CONSTRUCTED TO U.L. STD. 508 AND BEAR THE U.L. LABEL "ENCLOSED INDUSTRIAL CONTROL PANEL".

PROVIDE A HOLDER AND WATERPROOF POUCH ON THE INNER SIDE OF THE CONTROLLER DOOR. THE HOLDER AND POUCH SHALL BE MOUNTED SO THAT RAINWATER OR CONDENSED WATER CANNOT ENTER THE POUCH WITH THE CABINET DOOR OPEN. FURNISH THE APPROVED COPY OF THE "CONTROL CABINET WIRING DIAGRAM".

THE CABINET, METER AND BASE, AND CONDUIT FOR THE METER SHALL BE PAINTED IN DARK BRONZE FINISH.

THE LIGHTING CONTROLLER CABINET SHALL BE PLACED SO THAT THE DOOR IS ORIENTED OPPOSITE TO TRAFFIC.

DEVICE SCHEDULE		
ITEM	QUANT.	DESCRIPTION
(A)	1	200 AMP CIRCUIT BREAKER, MOLDED CASE, THERMAL MAGNETIC, 2-POLE, SINGLE THROW, 600V FRAME, NON-INTERCHANGEABLE TRIP, BOLT ON TYPE; INTERRUPTING CAPACITY OF NOT LESS THAN 25,000 RMS SYMMETRICAL AMPERES AT 600V
(B)	1	200 A., ELECTRICALLY OPERATED AND MECHANICALLY HELD LIGHTING CONTACTOR, 2-POLE, 600 V. WITH 120 V. COIL
(C)	20	240/480 V. 1 PHASE PANEL BOARD WITH 200 A. COPPER MAINS SINGLE POLE, 30 A., 277 V. BOLT ON BRANCH CIRCUIT BREAKERS INTERRUPTING CAPACITY OF NOT LESS THAN 14,000 RMS SYMMETRICAL AMPERES AT 277 V.
(D)	1	PHOTO-ELECTRIC CELL, 120 V, MOUNT ON LIGHT POLE NEAREST CONTROLLER
(E)	2	THERMAL MAGNETIC, MOLDED CASE CIRCUIT BREAKER, 1 POLE, 15 A., 277 V, BOLT ON TYPE, INTERRUPTING CAPACITY OF NOT LESS THAN 14,000 RMS SYMMETRICAL AMPERES AT 277 V.
(F)	1	CONTROL SWITCH, MOMENTARY CONTACT, SPDT, 15 A., 240 V.
(G)	1	CONTROL SWITCH, TOGGLE TYPE, SPDT, 20 A., 240 V. SPEC. GRADE
(H)	1	240/120V. STEP DOWN CONTROL TRANSFORMER 750 VA RATED
(I)	1	MICRO SWITCH (MOUNTED WITH ACTUATOR TO SWITCH WHEN DOOR IS OPEN)
(J)	1	60 WATT LIGHT FIXTURE VAPORTIGHT WITH GLOBE, GUARD AND MOUNTING BOX
(K)	1	120 VOLT, 15 A. GFCI RECEPTACLE, SPECIFICATION GRADE IN NEMA 5-15R WEATHERPROOF BOX WITH FLAP-TYPE COVER
(L)	1	POWER RELAY WITH CONTACTS RATED FOR CONTACTOR INRUSH CURRENT - 120 V COIL
(M)	1	SURGE ARRESTOR, 5 WIRE EDCO "4803" OR EQUAL
(N)	1	FUSE 600 VOLT 30 AMP

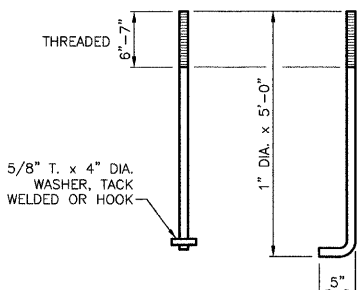
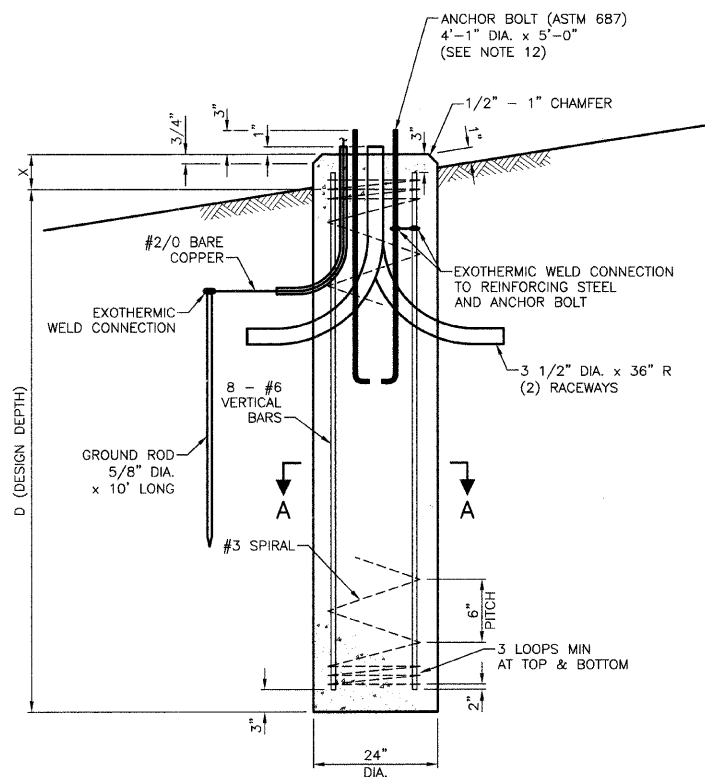
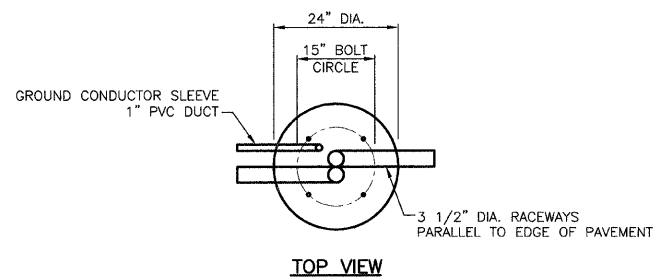


LIGHTING CONTROLLER EGF
WIRING DIAGRAM

REVISIONS	
NAME	DATE

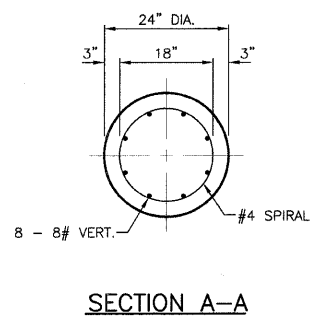
ILLINOIS DEPARTMENT OF TRANSPORTATION
ILLINOIS ROUTE 83
ROADWAY LIGHTING
LIGHTING DETAILS
ILLINOIS ROUTE 83
(BUSSE ROAD)
DATE: 05/14/2008
CHECKED BY: D.N.M.

SECTION	COUNTY	TOTAL SHEETS	SHEET NO.
08-00053-00-LT	COOK/DUPAGE	15	14
ILLINOIS ROUTE 83 (BUSSE ROAD)			
LIGHTING DETAILS			

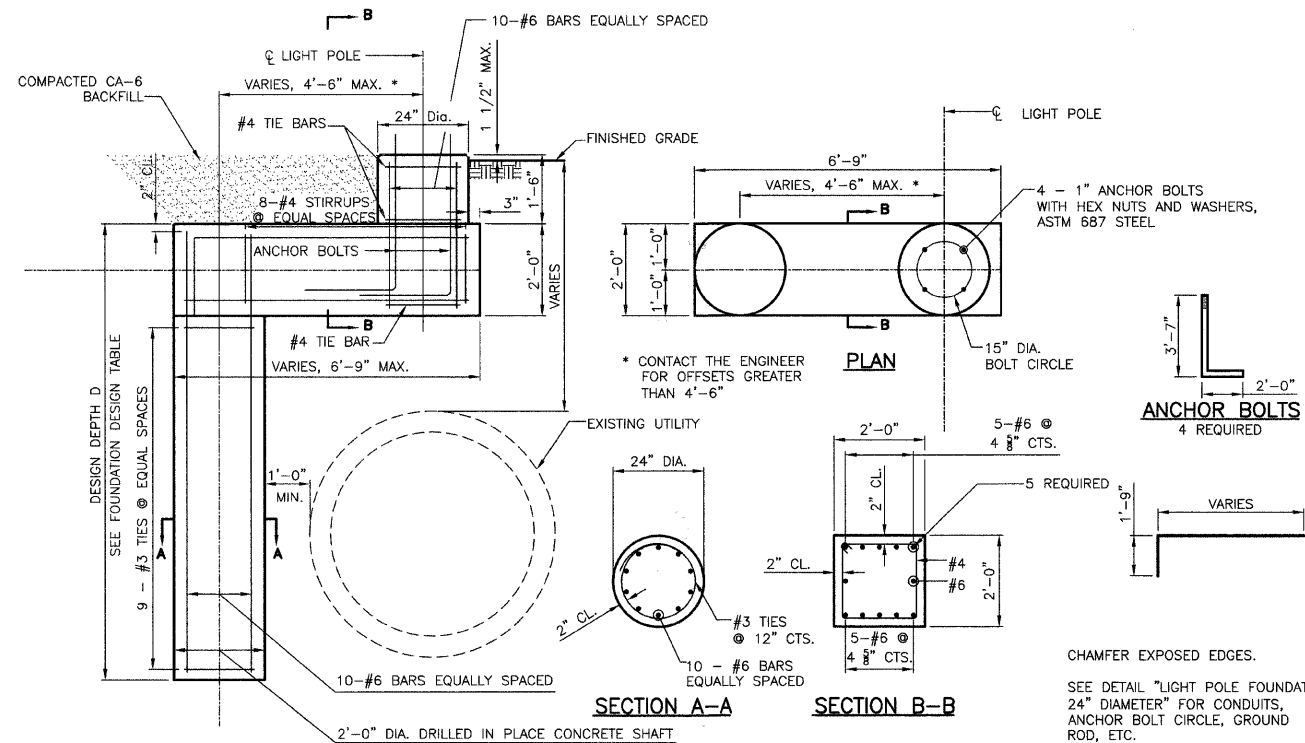


DESIGN TABLE - LIGHT POLE FOUNDATION, 24" DIAMETER

TYPE OF SOIL	DESIGN DEPTH OF FOUNDATION		REINFORCEMENT IN FOUNDATION			
	SINGLE ARM D	TWIN ARM D	SINGLE ARM		TWIN ARM	
			VERT. BARS	SPIRAL	VERT. BARS	SPIRAL
SOFT CLAY	13'-0"	15'-0"	8-#6 x 12'-6"	#3 x 122'	8-#6 x 14'-3"	#3 x 141'
MEDIUM CLAY	9'-6"	10'-9"	8-#6 x 9'-0"	#3 x 90'	8-#6 x 10'-0"	#3 x 100'
STIFF CLAY	7'-0"	8'-0"	8-#6 x 6'-6"	#3 x 66'	8-#6 x 7'-6"	#3 x 76'
LOOSE SAND	10'-0"	11'-0"	8-#6 x 9'-6"	#3 x 94'	8-#6 x 10'-6"	#3 x 103'
MEDIUM SAND	8'-3"	9'-0"	8-#6 x 8'-0"	#3 x 78'	8-#6 x 8'-6"	#3 x 85'
DENSE SAND	7'-9"	9'-0"	8-#6 x 7'-6"	#3 x 73'	8-#6 x 8'-6"	#3 x 85'
ROCK OR SOLIDIFIED SLAG	5'-0"	5'-0"	NONE	NONE	NONE	NONE



LIGHT POLE FOUNDATION, 24" DIAMETER



LIGHT POLE FOUNDATION, 24" DIAMETER, OFFSET

DESIGN TABLE LIGHT POLE FOUNDATION, 24" DIAMETER, OFFSET

TYPE OF SOIL	DESIGN DEPTH OF FOUNDATION D
SOFT CLAY	13'-0"
MEDIUM CLAY	9'-6"
STIFF CLAY	7'-0"
LOOSE SAND	9'-0"
MEDIUM SAND	8'-3"
DENSE SAND	7'-9"

STRUCTURAL SEAL TO BE ADDED @ TIME OF FINAL SUBMITTAL

NOTES:

1. THE ENGINEER SHALL DETERMINE THE CLASS OF SOIL DURING EXCAVATION AND SELECT THE DESIGN DEPTH OF FOUNDATION FROM THE DESIGN TABLE. THE CONTRACTOR SHALL NOT ORDER REINFORCEMENT BARS UNTIL THE OFFSET AND DIMENSION D ARE DETERMINED.
2. EXCAVATION OF THE POLE FOUNDATION SHALL BE MADE WITH AN AUGER, 24" OR 30" IN DIAMETER.
3. THE CONTRACTOR SHALL USE #3 SPIRAL AT 6" PITCH OR AT HIS OPTION MAY SUBSTITUTE #3 TIES AT 12" CENTER.
4. THE ANCHOR SHALL BE A TACK WELDED TYPE BOLT OR HOOK TYPE BOLT. COLD BENDING OF THE HOOK BOLT WILL NOT BE ALLOWED.
5. THE ANCHOR BOLTS AND RACEWAYS SHALL BE PROPERLY SECURED IN PLACE BEFORE THE CONCRETE IS PLACED IN THE FORM.
6. THE ENTIRE LENGTH OF THE ANCHOR BOLTS AS WELL AS THE NUTS AND WASHERS SHALL BE HOT DIP GALVANIZED IN ACCORDANCE WITH THE REQUIREMENTS OF ASTM DESIGNATION A 153.
7. CONCRETE SHALL BE CLASS "SI". CONCRETE FOUNDATION MUST BE CURED FOR (10) TEN DAYS BEFORE THE LIGHT STANDARD IS ERECTED.
8. THE CABLE TRENCH SHALL BE BACKFILLED AND FIRMLY COMPACTED BEFORE THE LIGHT IS ERECTED.
9. ANCHOR BOLTS SHALL PROJECT 3" ABOVE THE TOP OF THE FOUNDATION.
10. RACEWAYS SHALL PROJECT 1" ABOVE THE TOP OF THE FOUNDATION.
11. THE CONTRACTOR SHALL COORDINATE THE EXTENSION OF ANCHOR BOLTS ABOVE TOP OF FOUNDATION WITH THE BREAKAWAY DEVICE MANUFACTURER'S REQUIREMENTS.
12. A MINIMUM OF 3" OF THE THREADING ON THE ANCHOR BOLTS SHALL REMAIN BELOW THE TOP OF THE FOUNDATION.

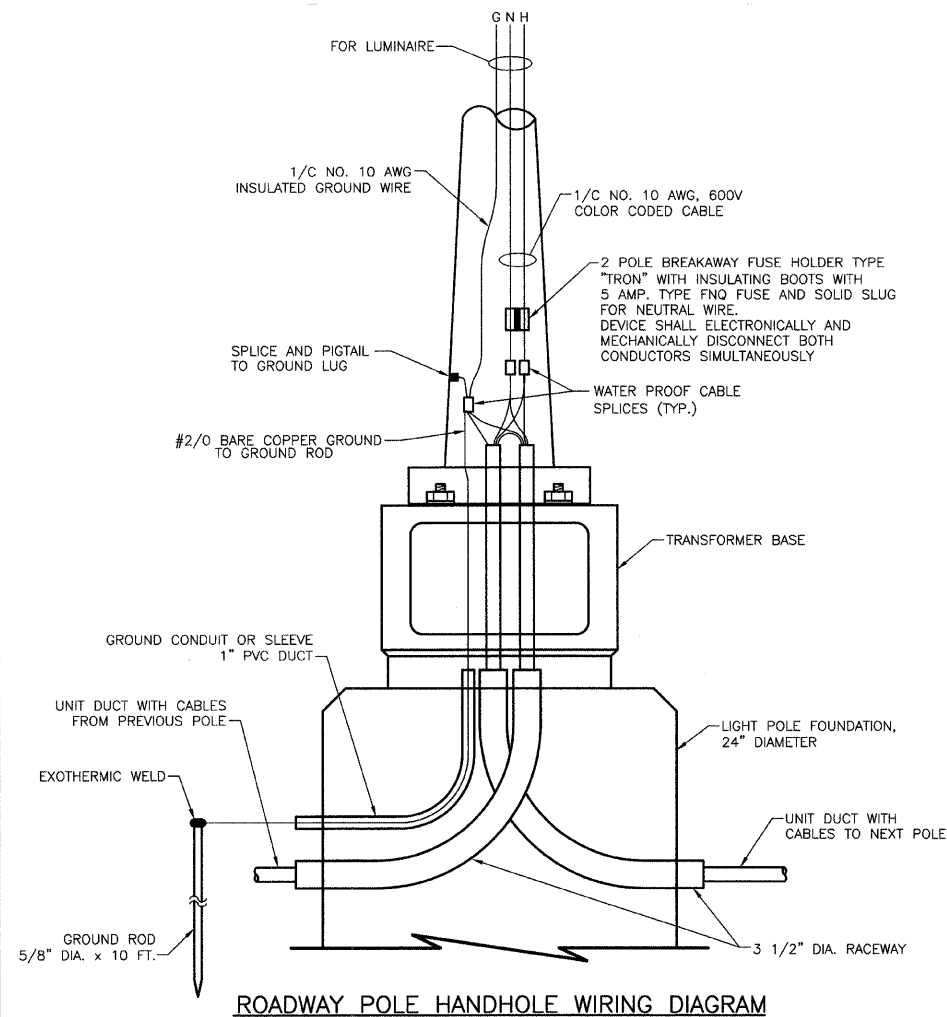
REVISIONS

NAME	DATE

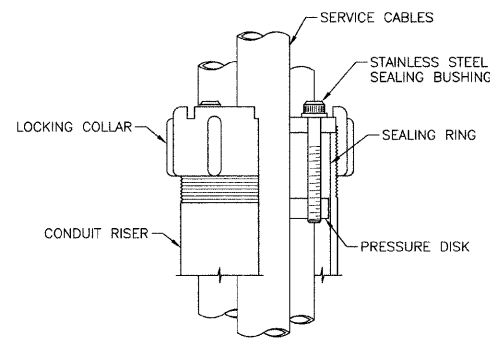
ILLINOIS DEPARTMENT OF TRANSPORTATION
ILLINOIS ROUTE 83
ROADWAY LIGHTING
LIGHTING DETAILS
ILLINOIS ROUTE 83
(BUSSE ROAD)

DATE: 05/14/2008
CHECKED BY: D.N.M.

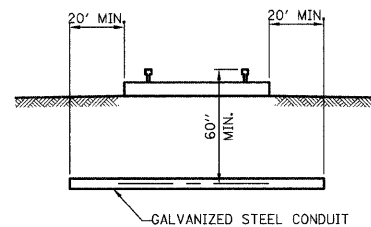
SECTION	COUNTY	TOTAL SHEETS	SHEET NO.
08-00053-00-LT	COOK/DUPAGE	15	15
ILLINOIS ROUTE 83 (BUSSE ROAD)			
LIGHTING DETAILS			



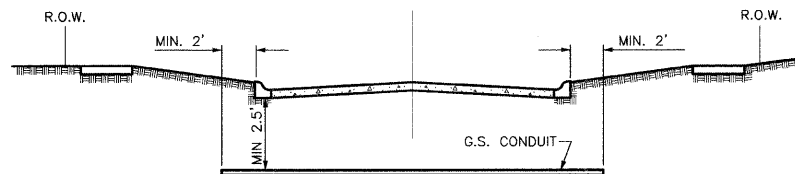
ROADWAY POLE HANDHOLE WIRING DIAGRAM



SEALING BUSHING DETAIL



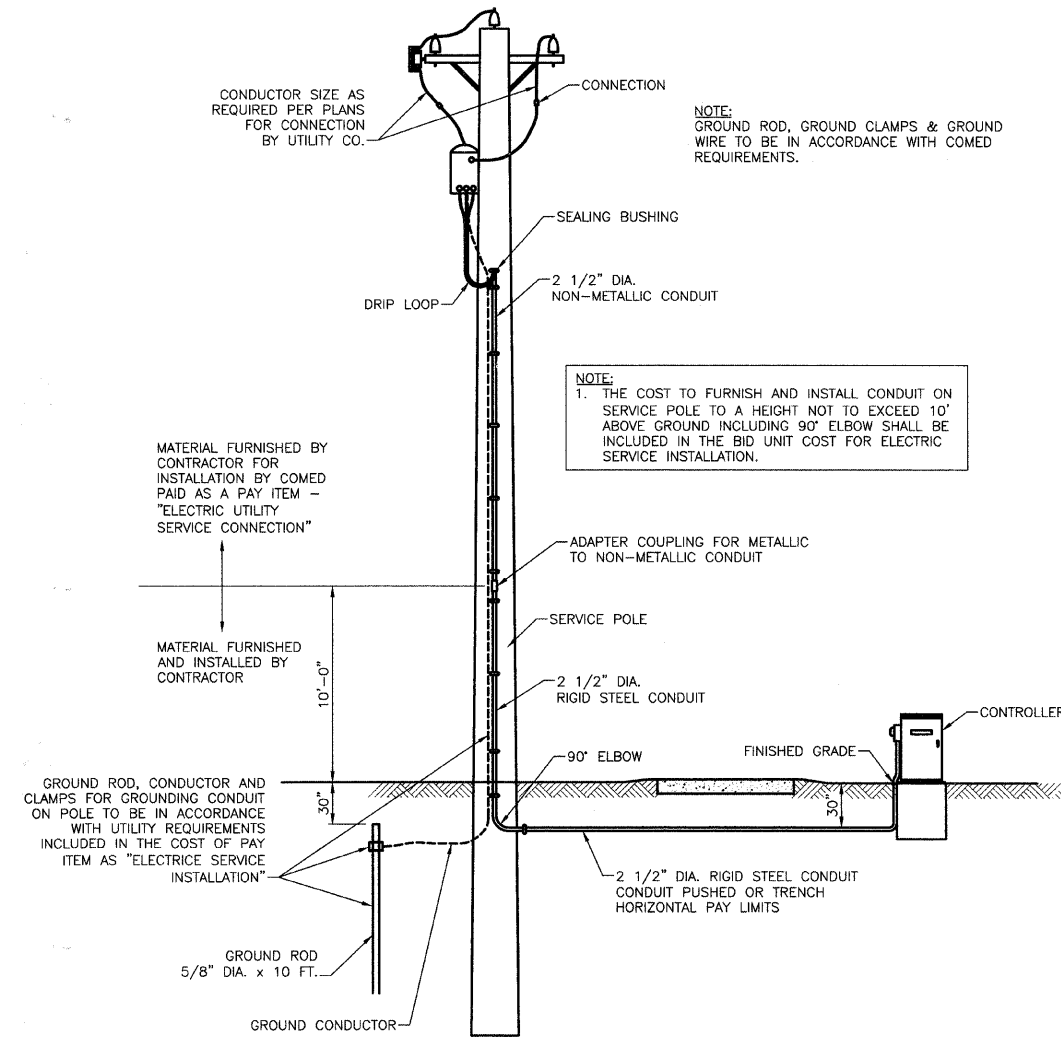
CONDUIT INSTALLATION UNDER RAILROAD TRACKS



STREET CROSSING

- CONDUIT SHALL BE HEAVY WALL RIGID G.S. CONDUIT.
- CONDUIT SHALL EXTEND A MINIMUM OF 2 FT. BEYOND BACK OF CURB.
- CONDUIT SHALL BE A MINIMUM OF 2.5 FT. BELOW BOTTOM OF CURB.

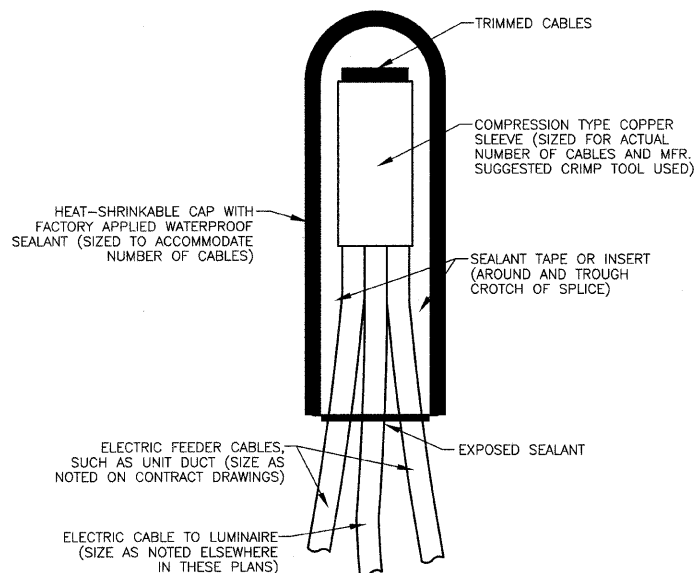
ELECTRICAL CONDUIT UNDER PAVEMENT



PROPOSED SERVICE INSTALLATION POLE TOP MOUNTED TRANSFORMER

NOTE:
1. THE COST TO FURNISH AND INSTALL CONDUIT ON SERVICE POLE TO A HEIGHT NOT TO EXCEED 10' ABOVE GROUND INCLUDING 90° ELBOW SHALL BE INCLUDED IN THE BID UNIT COST FOR ELECTRIC SERVICE INSTALLATION.

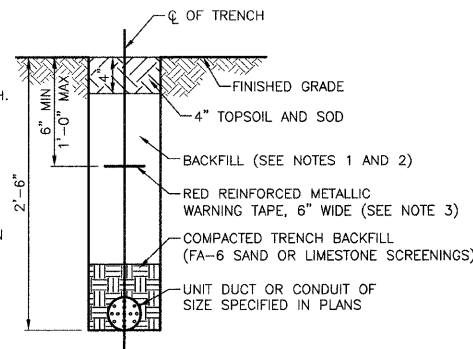
NOTE:
GROUND ROD, GROUND CLAMPS & GROUND WIRE TO BE IN ACCORDANCE WITH COMED REQUIREMENTS.



NOTE: NUMBER OF CABLES IN SPLICE MAY VARY
SPlicing ELECTRIC Cables
BASIC MATERIALS AND METHODS

NOTES:

- IN GRASS COVERED AREAS, THE BACKFILL MAY BE COMPACTED EARTH.
- TRENCHES WITHIN 2' OF PROPOSED OR EXISTING STREETS, DRIVEWAYS, OR SIDEWALKS WILL BE BACKFILLED WITH COMPACTED FA-6 SAND OR LIMESTONE SCREENINGS.
- WARNING TAPE WILL BE RED WITH BLACK LETTERING TO READ "CAUTION - ELECTRIC LINE BURIED BELOW".
- ALL GRASS COVERED AREAS DISTURBED DURING CONSTRUCTION WILL BE RESTORED WITH 4" OF TOPSOIL AND SOD.



TYPICAL TRENCH CROSS SECTION

REVISIONS	
NAME	DATE

ILLINOIS DEPARTMENT OF TRANSPORTATION
ILLINOIS ROUTE 83
ROADWAY LIGHTING
LIGHTING DETAILS
ILLINOIS ROUTE 83
(BUSSE ROAD)

DATE: 05/14/2008
CHECKED BY: D.N.M.