

F.A. RTE.	SECTION	COUNTY	TOTAL SHEETS	SHEET NO.
	06-00353-00-SP	KANE	7	1
FED. ROAD DIST. NO.	ILLINOIS	CONTRACT NO. 63048		

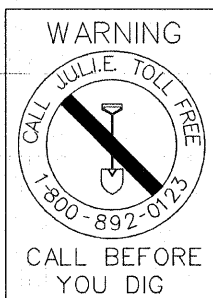
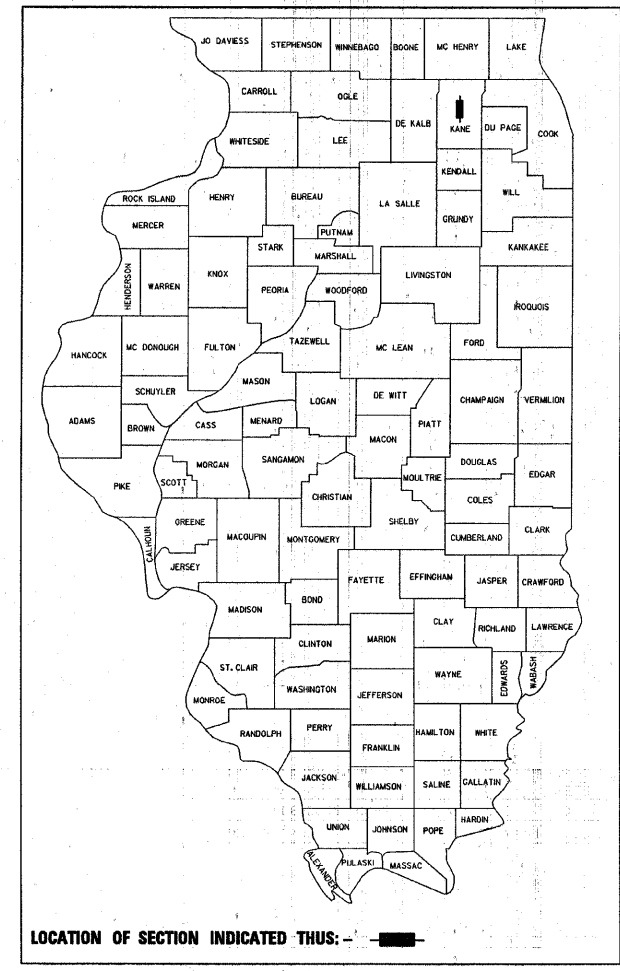
INDEX

1. TITLE SHEET
2. SUMMARY OF QUANTITIES
- 3-6. ILLINOIS DEPARTMENT OF TRANSPORTATION DISTRICT 1 STANDARD TRAFFIC SIGNAL DESIGN DETAILS
7. MAST ARMS WITH BEACONS AND SIGNS PLAN

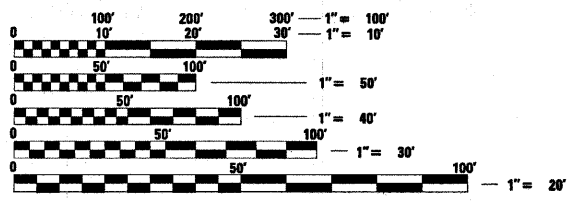
**STATE OF ILLINOIS
DEPARTMENT OF TRANSPORTATION
DIVISION OF HIGHWAYS**

**TRAFFIC SIGNAL
MODIFICATION PLAN**

**SAFETY BEACON INSTALLATION
FOR
RANDALL ROAD (C.H. 34) @ KESLINGER ROAD
SECTION: 06-00353-00-SP
PROJECT: HS-0336 (042)
JOB NUMBER: C-91-007-07
KANE COUNTY**

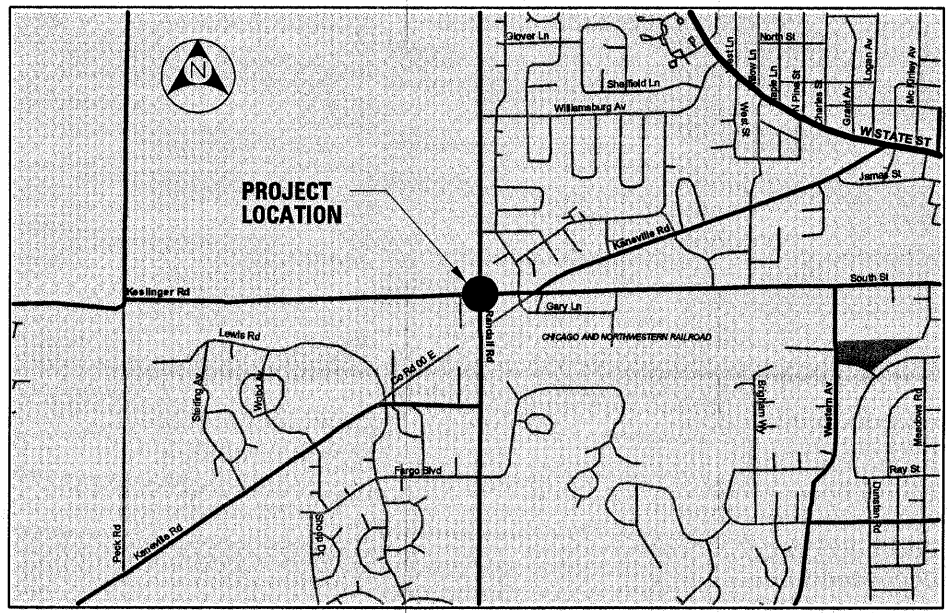


- IDOT STANDARDS**
- 701101-01 OFF-RD OPERATIONS, MULTILANE, 4.5m (15') TO 600mm FROM PAVEMENT EDGE
 - 701421-01 LANE CLOSURE, MULTILANE, DAY OPERATIONS ONLY, FOR SPEEDS 45MPH TO 55MPH
 - 701901 TRAFFIC CONTROL DEVICES
 - 720001 SIGN PANEL MOUNTING DETAILS
 - 720006-01 SIGN PANEL ERECTION DETAILS
 - 814001-01 HANDHOLES
 - 877001-03 STEEL MAST ARM ASSEMBLY AND POLE 16" THROUGH 55"
 - 878001-06 CONCRETE FOUNDATION DETAILS
 - 880006 TRAFFIC SIGNAL MOUNTING DETAILS

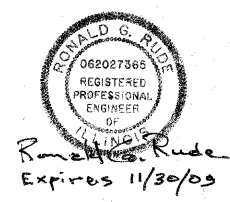


FULL SIZE PLANS HAVE BEEN PREPARED USING STANDARD ENGINEERING SCALES. REDUCED SIZED PLANS WILL NOT CONFORM TO STANDARD SCALES. IN MAKING MEASUREMENTS ON REDUCED PLANS, THE ABOVE SCALES MAY BE USED.

J.U.L.I.E.
JOINT UTILITY LOCATION INFORMATION FOR EXCAVATION
1-800-892-0123



LOCATION MAP



AGENCY RESPONSIBLE FOR LETTING	
Approved	<i>[Signature]</i> KANE COUNTY D.O.T. County Engineer Local Agency, Position
Passed	July 16, 2008 <i>[Signature]</i> CHRISTOPHER HOLT District # Engineer of Local Roads & Streets
Releasing for Bid Based on Limited Review	July 17, 2008 <i>[Signature]</i> Diana M. O'Keefe <i>of</i> Deputy Director of Highways, Region # Engineer

**PROJECT ENGINEER
PROJECT MANAGER**

CONTRACT NO. 63048

**PRINTED BY THE AUTHORITY
OF THE STATE OF ILLINOIS**