

F.A.P	SECTION	COUNTY	TOTAL SHEETS	SHEET NO.
305	08-00109-00-CH	MCHENRY	7	1
STA.		TO STA.		
FED.ROAD DIST. NO.		ILLINOIS	FED. AID PROJECT	

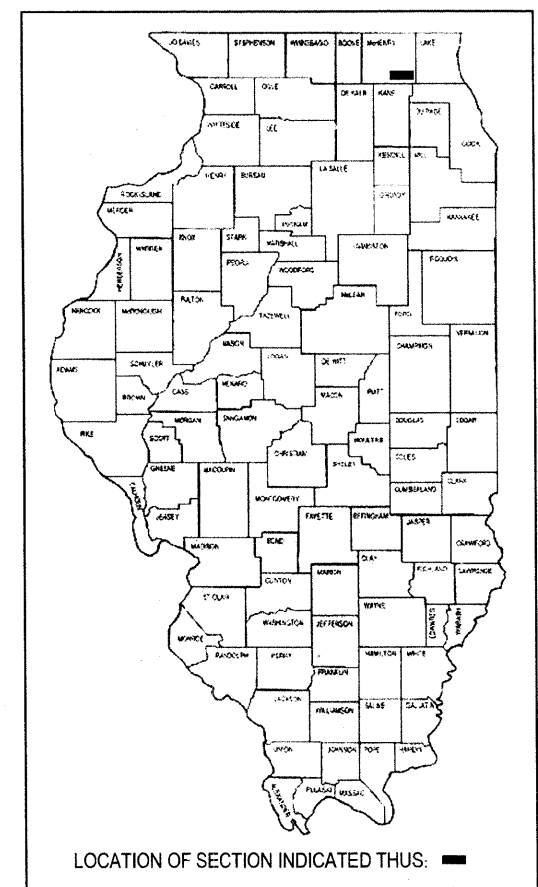
CONTRACT NO: 63067

**STATE OF ILLINOIS
DEPARTMENT OF TRANSPORTATION
DIVISION OF HIGHWAYS
PLANS FOR PROPOSED
FEDERAL AID HIGHWAY**

**US ROUTE 14 (FAP 305)
IL 176 (FAP 335) TO WOODSTOCK STREET (FAU 0120)
SECTION NO: 08-00109-00-CH
RADIO SIGNAL INTERCONNECT
PROJECT NO: CMM-9003(048)
MCHENRY COUNTY
C-91-465-08**

INDEX OF SHEETS

- Cover Sheet
- General Notes & Summary of Quantities
- Interconnect Schematic
- US 14 @ IL 176 Existing Signal Plans
- US 14 @ IL 176 Existing Cable Plan
- US 14 @ Woodstock Street Existing Signal Plans
- US 14 @ Woodstock Street Existing Cable Plan



STATE STANDARDS

701501-04	URBAN LANE CLOSURE, 2L, 2W, UNDIVIDED
701801-03	LANE CLOSURE MULTILANE 1W OR 2W CROSSWALK OR SIDEWALK CLOSURE
701901	TRAFFIC CONTROL DEVICES

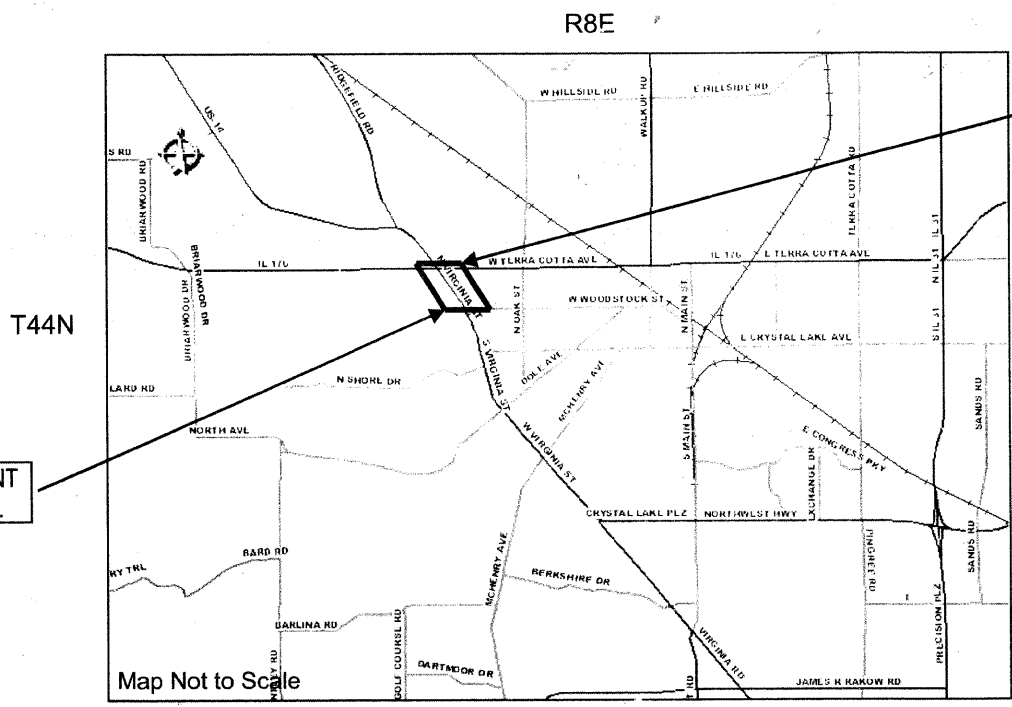
EXISTING ADT = 26,200
SPEED LIMIT = 35 MPH

DESIGN DESIGNATION:
MAJOR ARTERIAL

PROJECT LOCATED IN THE
CITY OF CRYSTAL LAKE

PLANS ARE NOT TO SCALE

J.U.L.I.E
JOINT UTILITY LOCATION INFORMATION
FOR EXCAVATION
1-800-892-0123

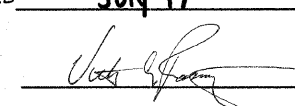



BEGIN IMPROVEMENT
IL ROUTE 176

END IMPROVEMENT
WOODSTOCK ST.

Gross & Net Length of Project = 1775 feet (0.336 mi)

**STATE OF ILLINOIS
DEPARTMENT OF TRANSPORTATION
DIVISION OF HIGHWAYS**

APPROVED July 17 2008

 CITY ENGINEER

PASSED July 18 2008

 DISTRICT ONE ENGINEER LOCAL ROADS AND STREETS

RELEASED FOR BID
BASED ON LIMITED
REVIEW July 18 2008

Diana M. O'Keefe
DEPUTY DIRECTOR OF HIGHWAYS, REGION 1 ENGINEER

FEDERAL AID COORDINATOR: PHIL MARCYN (847) 705-4189



PLANS PREPARED BY:
CITY OF CRYSTAL LAKE
815-356-3615

CONTRACT NO: 63067

PRINTED BY AUTHORITY OF THE STATE OF ILLINOIS