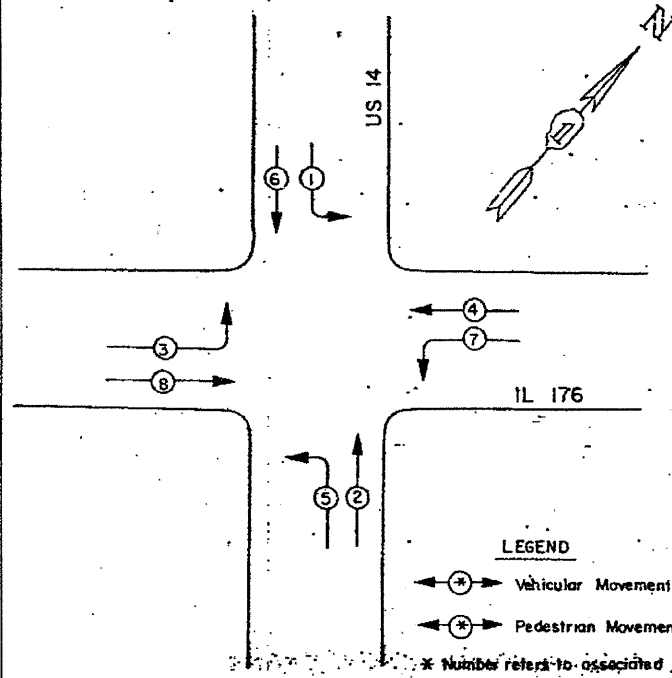
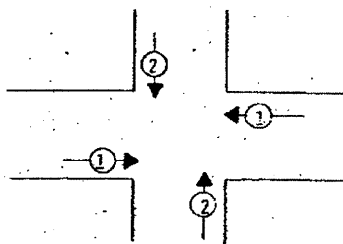


CONTROLLER SEQUENCE TYPE IV

Referring to Standard 2393, the vehicular and pedestrian phases used are designated below.



PHASE DESIGNATION DIAGRAM



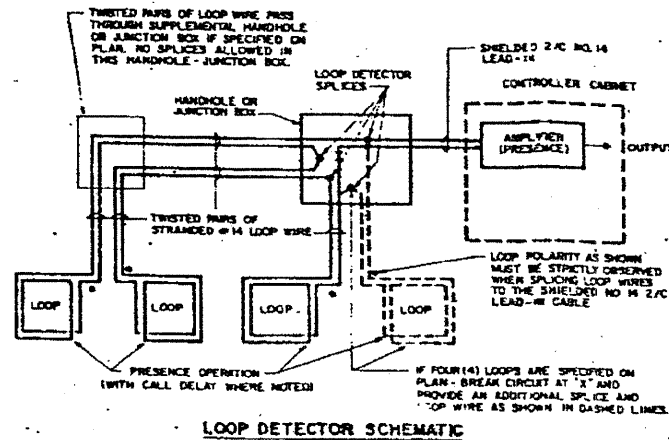
PRIORITY SEQUENCE FOR CONTROLLER SEQUENCE IV

PROPOSED PRIORITY LANES		
PRIORITY LANE INTERVAL	1	2
MOVEMENT	←	↑

NOTES:

1. TERMINATION OF PHASES 1+5 OR 3+7 SHALL BE WITH A YELLOW ARROW DISPLAYED TOGETHER WITH A CIRCULAR RED.
2. TERMINATION OF PHASES 1, 3, 5, OR 7 ALONE IN PHASES 1+5, 3+3, 2+5, OR 4+7 SHALL BE WITH A YELLOW ARROW DISPLAYED TOGETHER WITH A CIRCULAR GREEN WHICH FOLLOWED BY A PRIORITY LANE INTERVAL WHICH DISPLAYS THE CIRCULAR GREEN.
3. TERMINATION OF PHASES 1+5, 3+3, 2+5 OR 4+7 SHALL BE WITH A CIRCULAR YELLOW DISPLAY WHEN FOLLOWED BY A PRIORITY LANE INTERVAL WHICH DISPLAYS A CIRCULAR RED.
4. TERMINATION OF PHASES 2+6 OR 4+8 SHALL BE WITH A CIRCULAR YELLOW WHICH FOLLOWED BY A PRIORITY LANE INTERVAL WHICH DISPLAYS A CIRCULAR RED. WHEN PHASES 2+6 OR 4+8 CIRCULAR GREEN IS TO BE DISPLAYED IN THE PRIORITY LANE INTERVAL, IT SHALL REMAIN GREEN.
5. TERMINATION OF ALL PEDESTRIAN INTERVALS SHALL INCLUDE A FULL FLASHING "DON'T WALK" CLEARANCE INTERVAL.
6. TERMINATION OF ALL PRIORITY INTERVALS SHALL BE WITH A CIRCULAR YELLOW EXCEPT WHEN THE GREEN DISPLAYED DURING THE PRIORITY INTERVAL IS TO REMAIN GREEN WHEN THE NORMAL SEQUENCE OF OPERATIONS RESUMES CONTROL OF THE INTERSECTION.
7. IF ALL RED CLEARANCE IS USED IN THE NORMAL SEQUENCE OF OPERATIONS, IT MUST BE DISPLAYED AFTER THE YELLOW CLEARANCE INTERVAL WHEN LEAVING THE PRIORITY SEQUENCE.

1. EACH LOOP LEAD-IN SHALL BE PLACED IN A SEPARATE CONDUIT FROM EDGE OF PAVEMENT TO HANDHOLE, SPACING BETWEEN THE HOLES DRILLED IN THE PAVEMENT SHALL NOT BE LESS THAN 6".
2. EACH LOOP DETECTOR SPICE SHALL BE AN INDIVIDUAL TYPE X OR TYPE III SPICE.
3. LOOP TURNS AS RECOMMENDED BY THE MANUFACTURER.



LOOP DETECTOR SCHEMATIC

CABLE PLAN LEGEND

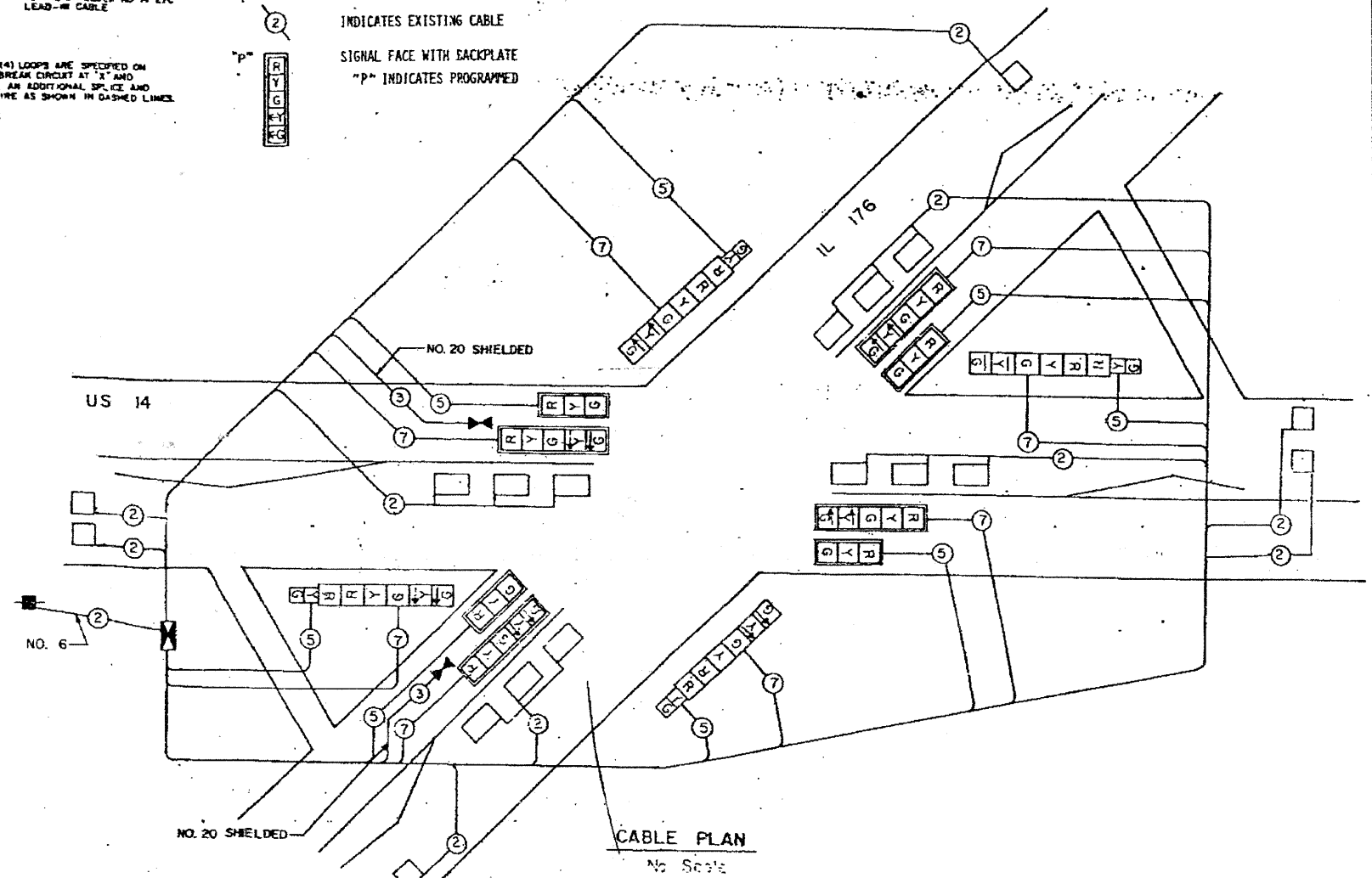
- 8" TRAFFIC SIGNAL SECTION
- 12" TRAFFIC SIGNAL SECTION
- 12" PEDESTRIAN SIGNAL SECTION
- CONTROLLER CABINET
- SERVICE INSTALLATION
- VEHICLE DETECTOR, INDUCTION LOOP
- PUSHBUTTON DETECTOR
- DEMOTES NUMBER OF CONDUCTORS (NEW). ALL LOOP DETECTOR CABLE TO BE SHIELDED. ALL CABLE NO. 14 EXCEPT AS INDICATED.
- INDICATES EXISTING CABLE
- SIGNAL FACE WITH BACKPLATE
- "P" INDICATES PROGRAMMED

F.A.P.	SECTION	COUNTY	TOTAL SHEETS	SHEET NO.
305	08-00109-00-CH	MCHENRY	7	5
STA.		TO STA.		
FED. ROAD DIST. NO.		ILLINOIS	FED. AID PROJECT	

CONTRACT NO: 63067

SCHEDULE OF SIGNAL HEADS

- 4 EACH SIGNAL HEAD, ALUMINUM, 1-FACE, 3-SECTION WITH 12" LENSES, EAST ARM MOUNTED
- 4 EACH SIGNAL HEAD, ALUMINUM, 1-FACE, 5-SECTION WITH 12" LENSES, EAST ARM MOUNTED
- 4 EACH SIGNAL HEAD, ALUMINUM, 2-FACE, 1-3 SECTION WITH 12" RED LENS, 1-5 SECTION WITH 12" LENSES, BRACKET MOUNTED



CABLE PLAN

No Scale

REVISIONS		ILLINOIS DEPARTMENT OF TRANSPORTATION	
NAME	DATE	US 14 AT IL 176 EXISTING CABLE PLANS	
SCALE:	N.T.S.	DRAWN BY:	N/A
DATE:	MAY 2008	DESIGNED BY:	N/A
		CHECKED BY:	N/A