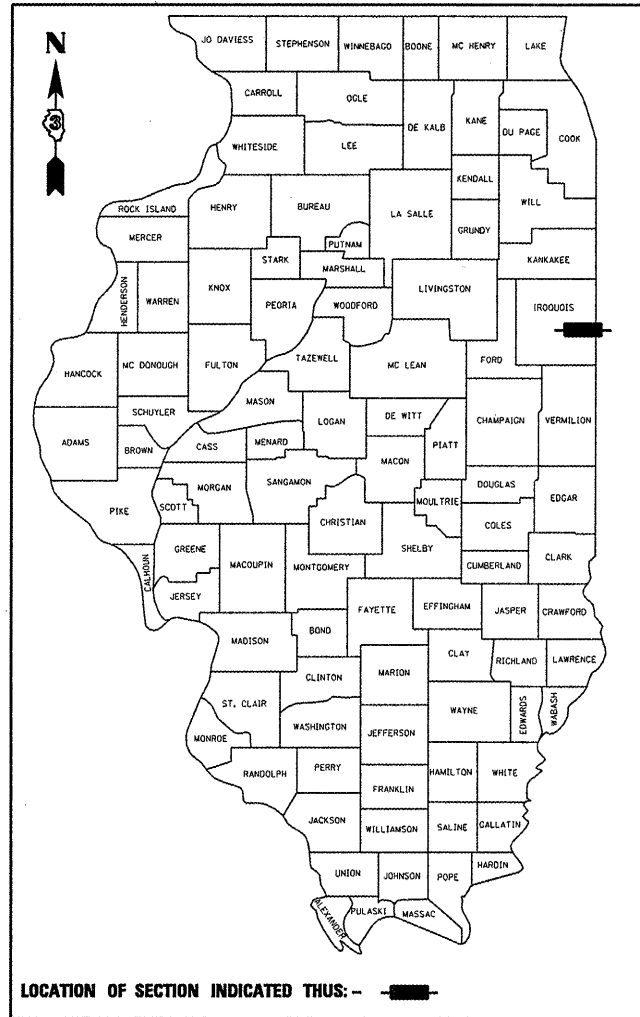


F.A.P. RTE.	SECTION	COUNTY	TOTAL SHEETS	SHEET NO.
317	*	IROQUOIS	19	1
FED. ROAD DIST. NO.		ILLINOIS	CONTRACT NO. 66849	

\* TRUCK WEIGH STATION #17 (I-1)

D-93-084-08



LOCATION OF SECTION INDICATED THUS: - [black bar] -

STATE OF ILLINOIS  
DEPARTMENT OF TRANSPORTATION  
DIVISION OF HIGHWAYS  
**PROPOSED  
HIGHWAY PLANS**  
FAP ROUTE 317 (US 24)  
SECTION TRUCK WEIGH STATION #17 (I-1)  
  
IROQUOIS COUNTY  
C - 93 - 126-08  
**MISCELLANEOUS REPAIRS**

**INDEX OF SHEETS**

- 1. COVER SHEET
- 2. GENERAL NOTES
- 3 - 5. SUMMARY OF QUANTITIES
- 6 - 7. SCHEDULES
- 8. TRAFFIC CONTROL DETAILS
- 9. SCALE HOUSE FLOOR PLAN
- 10. DETAILS A & B
- 11. SECTION A-A
- 12. CLASS B PATCHING
- 13 - 15. PAVEMENT DETAILS
- 16. DELINEATOR DETAILS
- 17. GRADING EXISTING INFIELD
- 18 - 19. PAVEMENT MARKING

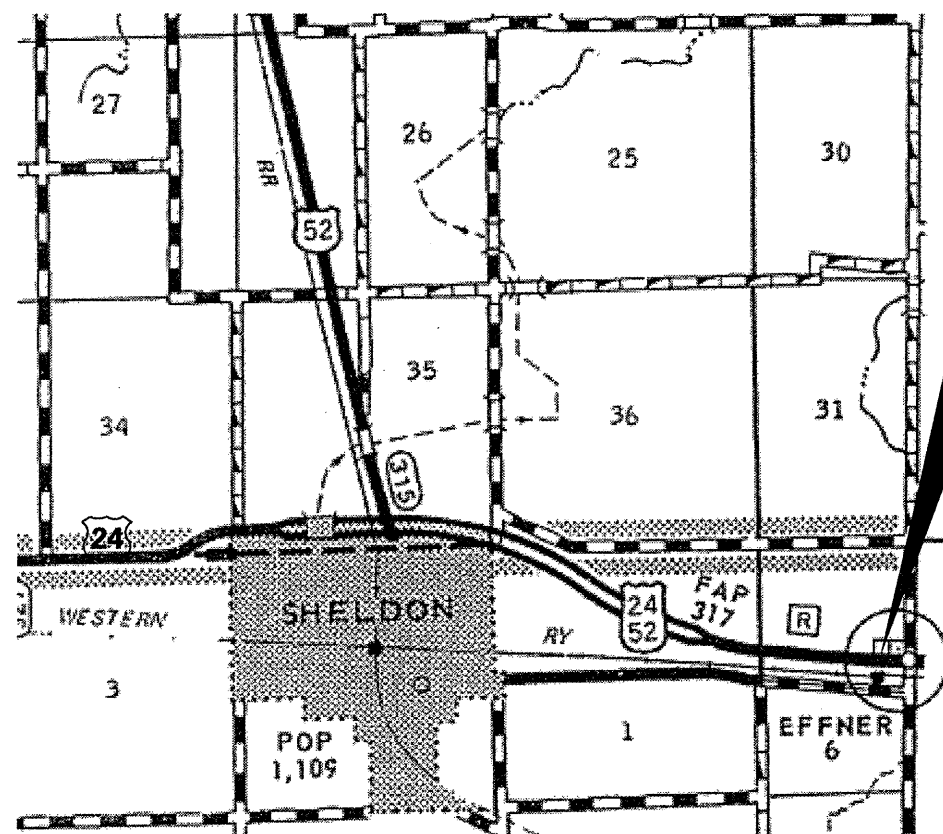
**STANDARDS**

- 000001-05 STANDARD SYMBOLS, ABBREVIATIONS AND PATTERNS
- 001006 DECIMAL OF AN INCH AND OF A FOOT
- 420001-07 PAVEMENT JOINTS
- 420701-02 PAVEMENT FABRIC
- 442101-07 CLASS B PATCHES
- 635001 DELINEATORS
- 701001-01 OFF-ROAD OPERATIONS 2L, 2W, MORE THAN 4.5 m (15') AWAY
- 701006-02 OFF-ROAD OPERATIONS 2L, 2W, 4.5 m (15') TO 600 mm (24") FROM PAVEMENT EDGE
- 701901 TRAFFIC CONTROL DEVICES
- 720011 METAL POSTS FOR SIGN MARKERS & DELINEATORS

MICROFILMED \_\_\_\_\_  
REEL NUMBER \_\_\_\_\_  
AWARDED \_\_\_\_\_  
RESIDENT ENGINEER \_\_\_\_\_  
AS BUILT CHANGES WERE MADE  
ON THE FOLLOWING SHEETS \_\_\_\_\_

J.U.L.I.E.  
JOINT UTILITY LOCATION INFORMATION FOR EXCAVATION  
1-800-892-0123  
OR 811

**PROJECT ENGINEER : JOE KANNEL**  
**UNIT CHIEF : RON WOODSHANK**  
  
DISTRICT 3 NO. (815) 434-6131  
**CONTRACT NO. 66849**



**LOCATION MAP**  
NOT TO SCALE

POINT LOCATION

**PROJECT LOCATION**  
SHELDON WEIGH STATION  
1.9 MILES EAST OF  
US ROUTE 52 NORTH (SHELDON)

STATE OF ILLINOIS  
DEPARTMENT OF TRANSPORTATION  
DIVISION OF HIGHWAYS

SUBMITTED 7/17 2008  
*[Signature]*  
DEPUTY DIRECTOR OF HIGHWAYS REGION ENGINEER  
August 15, 2008  
*[Signature]*  
ENGINEER OF DESIGN AND ENVIRONMENT  
August 15, 2008  
*[Signature]*  
DIRECTOR OF HIGHWAYS, CHIEF ENGINEER

**PRINTED BY THE AUTHORITY  
OF THE STATE OF ILLINOIS**

PLOT DATE = Jul 11, 2008 - 01:31:40 PM  
FILE NAME = c:\projects\main09\cm312\details.dgn  
PLOT SCALE = 100.0000' / IN.  
USER NAME = carpenterdj

# GENERAL NOTES

THE THICKNESS OF HMA SHOWN ON THE PLANS IS THE NOMINAL THICKNESS. DEVIATIONS FROM THE NOMINAL THICKNESS WILL BE PERMITTED WHEN SUCH DEVIATIONS OCCUR DUE TO IRREGULARITIES IN THE EXISTING SURFACE OR BASE ON WHICH THE HMA IS PLACED.

FOR STABILIZATION, ALL TYPE III BARRICADES SHALL REQUIRE A MINIMUM OF FOUR SAND BAGS PER BARRICADE.

SEEDING SHALL NOT BE PERMITTED AT ANY TIME WHEN THE GROUND IS FROZEN, WET, OR IN AN UNTILLABLE CONDITION. LOCATIONS TO BE SEEDED WILL BE DETERMINED BY THE ENGINEER.

ABANDONED UNDERGROUND UTILITIES THAT CONFLICT WITH CONSTRUCTION SHALL BE DISPOSED OF OUTSIDE THE LIMITS OF THE RIGHT OF WAY ACCORDING TO ARTICLE 202.03 OF THE STANDARD SPECIFICATIONS AND AS DIRECTED BY THE ENGINEER. THIS WORK WILL NOT BE PAID FOR SEPARATELY, BUT SHALL BE INCLUDED IN THE COST OF EARTH EXCAVATION.

ANY REFERENCE TO A STANDARD IN THESE PLANS SHALL BE INTERPRETED TO MEAN THE EDITION AS INDICATED BY THE SUBNUMBER SHOWN IN THE LIST OF STANDARDS OR THE COPY INCLUDED IN THESE PLANS.

THE CONTRACTOR SHALL CONTACT JULIE AT LEAST 48 HOURS PRIOR TO EXCAVATION TO DETERMINE WHICH UTILITIES ARE IN THE AREA.

THE CONTRACTOR SHALL CONTACT THE ILLINOIS STATE POLICE AT LEAST 48 HOURS PRIOR TO CLOSING THE WEIGH STATION.

THE FOLLOWING RATES OF APPLICATION HAVE BEEN USED IN CALCULATING PLAN QUANTITIES:

GRANULAR MATERIALS	2.05	TONS / CU YD
BITUMINOUS MAT PRIME COAT	0.08	GAL / SQ YD OR
	0.375	GAL / SQ YD
HMA RESURFACING	112	LBS / SQ YD / IN

	<b>HMA SURFACE</b>
<b>PG GRADE</b>	<b>PG64-22</b>
<b>MAX % RAP ALLOWABLE</b>	<b>10%**</b>
<b>DESIGN AIR VOIDS</b>	<b>4.0% @ N90</b>
<b>MIXTURE COMPOSITION</b>	<b>IL 12.5 or IL 9.5</b>
<b>FRICTION AGGREGATE</b>	<b>MIXTURE C</b>
<b>DENSITY CONTROL METHOD</b>	<b>NUCLEAR OR CORES</b>

**\*\*IF RAP OPTION IS SELECTED, THE ASPHALT CEMENT GRADE MAY NEED TO BE ADJUSTED. THIS WILL BE DETERMINED BY THE ENGINEER.**

STATE OF ILLINOIS  
DEPARTMENT OF TRANSPORTATION  
DISTRICT THREE

PREPARED BY: *Paul*  
DISTRICT STUDIES & PLANS ENGINEER

DATE: 7/16/08

EXAMINED BY: *[Signature]*  
DISTRICT CONSTRUCTION ENGINEER

*[Signature]*  
DISTRICT MATERIALS ENGINEER

*[Signature]*  
DISTRICT OPERATIONS ENGINEER

\* TRUCK WEIGH STATION #17 (I-1)

FILE NAME =	USER NAME = carpenterdj	DESIGNED - Ron Woodshank	REVISED -
c:\projects\cmain09\am312\details.dgn		DRAWN - Ron Woodshank	REVISED -
	PLOT SCALE = 100.0000' / IN.	CHECKED -	REVISED -
	PLOT DATE = Jul 11, 2008 - 01:36:55 PM	DATE -	REVISED -

STATE OF ILLINOIS  
DEPARTMENT OF TRANSPORTATION

## GENERAL NOTES

SCALE:	SHEET NO. 1 OF 1 SHEETS	STA. TO STA.	F.A.P. RTE. 317	SECTION *	COUNTY IROQUOIS	TOTAL SHEETS 19	SHEET NO. 2
			FED. ROAD DIST. NO. ILLINOIS		CONTRACT NO. 66849		

# SUMMARY OF QUANTITIES

**CONSTRUCTION CODE TYPE: Y222**

**RURAL  
100% STATE  
TOTAL  
QUANTITY**

CODE NO.	ITEM	UNIT	TOTAL QUANTITY
20101000	TEMPORARY FENCE	FOOT	400
20200500	EARTH EXCAVATION (WIDENING)	CU YD	138
25000110	SEEDING, CLASS 1A	ACRE	0.34
25000400	NITROGEN FERTILIZER NUTRIENT	POUND	20
25000500	PHOSPHORUS FERTILIZER NUTRIENT	POUND	20
25000600	POTASSIUM FERTILIZER NUTRIENT	POUND	20
25100120	MULCH, METHOD 2	TON	1
31101200	SUB-BASE GRANULAR MATERIAL, TYPE B 4"	SQ YD	357
35400500	PORTLAND CEMENT CONCRETE BASE COURSE WIDENING 10"	SQ YD	357
40600100	BITUMINOUS MATERIALS (PRIME COAT)	GALLON	89
40603320	HOT-MIX ASPHALT SURFACE COURSE, MIX C, N90	TON	124
42001200	PAVEMENT FABRIC	SQ YD	357

FILE NAME =  
c:\projects\main09\cm312\details.dgn

USER NAME = carpenterdj	DESIGNED - Ron Woodshank	REVISED -
	DRAWN - Ron Woodshank	REVISED -
PLOT SCALE = 100.0000' / IN.	CHECKED -	REVISED -
PLOT DATE = Jul 11, 2008 - 01:31:54 PM	DATE -	REVISED -

**STATE OF ILLINOIS  
DEPARTMENT OF TRANSPORTATION**

*SUMMARY OF QUANTITIES*

SCALE: SHEET NO. 1 OF 3 SHEETS STA. TO STA.

\* TRUCK WEIGH STATION #17 (I-1)

F.A.P. RTE. 317	SECTION	COUNTY	TOTAL SHEETS	SHEET NO.
	•	IROQUOIS	19	3
FED. ROAD DIST. NO. [ILLINOIS]			CONTRACT NO. 66849	

## SUMMARY OF QUANTITIES

**CONSTRUCTION CODE TYPE: Y222**

**RURAL  
100% STATE  
TOTAL  
QUANTITY**

CODE NO.	ITEM	UNIT	RURAL 100% STATE TOTAL QUANTITY
44200970	CLASS B PATCHES, TYPE II, 10 INCH	SQ YD	264
44200974	CLASS B PATCHES, TYPE III, 10 INCH	SQ YD	92
44200976	CLASS B PATCHES, TYPE IV, 10 INCH	SQ YD	91
44213100	PAVEMENT FABRIC	SQ YD	447
44213200	SAW CUTS	FOOT	2002
48101200	AGGREGATE SHOULDER, TYPE B	TON	15
63500120	DELINEATOR REMOVAL	EACH	28
67100100	MOBILIZATION	L SUM	1
70103900	TRAFFIC PROTECTION	L SUM	1
* 78005100	EPOXY PAVEMENT MARKING - LETTERS AND SYMBOLS	SQ FT	83
* 78005110	EPOXY PAVEMENT MARKING - LINE 4"	FOOT	1986
* 78005140	EPOXY PAVEMENT MARKING - LINE 8"	FOOT	1095

\* SPECIALTY ITEM

## SUMMARY OF QUANTITIES

**CONSTRUCTION CODE TYPE: Y222**

**RURAL  
100% STATE  
TOTAL  
QUANTITY**

CODE NO.	ITEM	UNIT	RURAL 100% STATE TOTAL QUANTITY
78300100	PAVEMENT MARKING REMOVAL	SQ FT	970
X0320063	REFLECTORS FOR DELINEATORS	EACH	348
X0320065	TYPE C DELINEATOR POST	EACH	174
X0324089	DOORS AND HARDWARE	L SUM	1
Z0012800	CONCRETE PAVEMENT SCARIFICATION	SQ YD	1096
Z0017100	DOWEL BARS	EACH	740
Z0024478	FLEXIBLE DELINEATORS	EACH	28
Z0075310	TIE BARS 3/4"	EACH	333
* X0326166	SUB-FLOOR REMOVAL	SQ FT	152
* X0326167	SUB-FLOOR INSTALLATION	SQ FT	152
* X0326168	12" X 12" TILE FLOORING	SQ FT	332
X0326169	GRADING EXISTING INFIELD	SQ YD	1651

\* SPECIALTY ITEM

FILE NAME =  
c:\projects\main09\cm312\details.dgn

USER NAME = carpenterdj	DESIGNED - Ron Woodshank	REVISED -
	DRAWN - Ron Woodshank	REVISED -
PLOT SCALE = 100.0000 / IN.	CHECKED -	REVISED -
PLOT DATE = Jul 11, 2009 - 01:32:06 PM	DATE -	REVISED -

**STATE OF ILLINOIS  
DEPARTMENT OF TRANSPORTATION**

### SUMMARY OF QUANTITIES

SCALE: SHEET NO. 3 OF 3 SHEETS STA. TO STA.

F.A.P. RTE. 317	SECTION	COUNTY	TOTAL SHEETS	SHEET NO.
		IROQUOIS	19	5
FED. ROAD DIST. NO. ILLINOIS			CONTRACT NO. 66849	

\* TRUCK WEIGH STATION #17 (I-1)

PATCHING SCHEDULE - WEST EXIT

LOCATION STATION	LANE 1							LANE 2					LANE 3								
	CLASS B PATCHING			DOWEL	SAW	PVMT	TIE	CLASS B PATCHING			DOWEL	SAW	PVMT	TIE	CLASS B PATCHING			DOWEL	SAW	PVMT	TIE
	TYPE II	TYPE III	TYPE IV	BARS	CUTS	FABRIC	BARS	TYPE II	TYPE III	TYPE IV	BARS	CUTS	FABRIC	BARS	TYPE II	TYPE III	TYPE IV	BARS	CUTS	FABRIC	BARS
SQ YD	SQ YD	SQ YD	EACH	FOOT	SQ YD	EACH	SQ YD	SQ YD	SQ YD	EACH	FOOT	SQ YD	EACH	SQ YD	SQ YD	SQ YD	EACH	FOOT	SQ YD	EACH	
0+25	8			20	48	8									19			20	64	19	
0+50								8			20	48	8								
0+75										59	20	124	59	22							
0+90															8			20	48	8	
1+10															11			20	52	11	
1+25									21		20	68	21								
1+35			32	20	84	32	12								11			20	52	11	
1+60								8			20	48	8								
1+75	13			20	56	13		13			20	56	13								
TOTALS	21		32	60	188	53	12	29	21	59	100	344	109	22	29	19		80	216	48	

PATCHING SCHEDULE - WEST ENTRANCE

LOCATION STATION	LANE 1							LANE 2						
	CLASS B PATCHING			DOWEL	SAW	PVMT	TIE	CLASS B PATCHING			DOWEL	SAW	PVMT	TIE
	TYPE II	TYPE III	TYPE IV	BARS	CUTS	FABRIC	BARS	TYPE II	TYPE III	TYPE IV	BARS	CUTS	FABRIC	BARS
SQ YD	SQ YD	SQ YD	EACH	FOOT	SQ YD	EACH	SQ YD	SQ YD	SQ YD	EACH	FOOT	SQ YD	EACH	
0+25	8			20	48	8								
0+30		16		20	60	16			20		20	66	20	
0+75								8			20	48	8	
0+95	8			20	48	8		8			20	48	8	
TOTALS	16	16		60	156	32		16	20		60	162	36	

PATCHING SCHEDULE - EAST EXIT

LOCATION M.P.	LANE 1							LANE 2					LANE 3								
	CLASS B PATCHING			DOWEL	SAW	PVMT	TIE	CLASS B PATCHING			DOWEL	SAW	PVMT	TIE	CLASS B PATCHING			DOWEL	SAW	PVMT	TIE
	TYPE II	TYPE III	TYPE IV	BARS	CUTS	FABRIC	BARS	TYPE II	TYPE III	TYPE IV	BARS	CUTS	FABRIC	BARS	TYPE II	TYPE III	TYPE IV	BARS	CUTS	FABRIC	BARS
SQ YD	SQ YD	SQ YD	EACH	FOOT	SQ YD	EACH	SQ YD	SQ YD	SQ YD	EACH	FOOT	SQ YD	EACH	SQ YD	SQ YD	SQ YD	EACH	FOOT	SQ YD	EACH	
0+90	8			20	48	8		8			20	48	8								
1+05	8			20	48	8		8			20	48	8								
1+20		16		20	60	16															
1+50	8			20	48	8		8			20	48	8								
1+75	11			20	52	11															
TOTALS	35	16		100	256	51		24			60	144	24								

PATCHING SCHEDULE - EAST ENTRANCE

LOCATION M.P.	LANE 1							LANE 2					LANE 3								
	CLASS B PATCHING			DOWEL	SAW	PVMT	TIE	CLASS B PATCHING			DOWEL	SAW	PVMT	TIE	CLASS B PATCHING			DOWEL	SAW	PVMT	TIE
	TYPE II	TYPE III	TYPE IV	BARS	CUTS	FABRIC	BARS	TYPE II	TYPE III	TYPE IV	BARS	CUTS	FABRIC	BARS	TYPE II	TYPE III	TYPE IV	BARS	CUTS	FABRIC	BARS
SQ YD	SQ YD	SQ YD	EACH	FOOT	SQ YD	EACH	SQ YD	SQ YD	SQ YD	EACH	FOOT	SQ YD	EACH	SQ YD	SQ YD	SQ YD	EACH	FOOT	SQ YD	EACH	
0+25								11			20	52	11					20	52	11	
0+30																		20	48	8	
0+60	8			20	48	8		8			20	48	8					20	48	8	
0+80								8			20	48	8								
0+85	8			20	48	8															
0+90								8			20	48	8								
1+00	8			20	48	8															
1+15								8			20	48	8								
TOTALS	24			60	144	24		43			100	244	43					60	148	27	

\* TRUCK WEIGH STATION #17 (I-1)

FILE NAME = c:\projects\main\09\cm312\details.dgn

USER NAME = carpenterdj  
 DESIGNED - Ron Woodshank  
 DRAWN - Ron Woodshank  
 PLOT SCALE = 100.0000' / IN.  
 PLOT DATE = Jul 11, 2008 - 01:32:12 PM

DESIGNED - Ron Woodshank  
 REVISIONS -  
 CHECKED -  
 DATE -

STATE OF ILLINOIS  
 DEPARTMENT OF TRANSPORTATION

SCHEDULES

SCALE: SHEET NO. 1 OF 2 SHEETS STA. TO STA.

F.A.P. RTE. 317  
 SECTION \*  
 COUNTY IROQUOIS  
 TOTAL SHEETS 19  
 SHEET NO. 6  
 CONTRACT NO. 66849  
 FED. ROAD DIST. NO. [ILLINOIS]

**SCHEDULE OF PAVEMENT MARKING**

LOCATION	PAVEMENT MARKING REMOVAL	EPOXY PAVEMENT MARKING- LETTER AND SYMBOLS		EPOXY PAVEMENT MARKING- LINE 4"		EPOXY PAVEMENT MARKING- LINE 8"		FLEXIBLE DELINEATORS
		SQ FT		FEET		FEET		
		WHITE	YELLOW	WHITE	YELLOW	WHITE	YELLOW	
WEST EXIT	401	12		340	200	332		8
WEST ENTRANCE	224	24		283	186	133		6
EAST ENTRANCE	325	35		182	228	282		7
EAST EXIT	421	12		205	362	348		7
SUBTOTAL	970	83		1010	976	1095		20
TOTAL	970	83		1986		1095		20

**SCHEDULE OF SCALE HOUSE FLOOR REPAIR**

LOCATION	SUB-FLOOR REMOVAL	SUB-FLOOR INSTALLATION	12" X 12" TILE FLOORING
	SQ FT	SQ FT	SQ FT
REST ROOM			35
ALCOVE			28
UTILITY ROOM			35
ENTRANCE HALL			82
OFFICE AREA	152	152	152
TOTAL	152	152	332

**SCHEDULE OF SEEDING**

LOCATION	GRADING EXISTING INFIELD	SEEDING CLASS 1A	NITROGEN FERTILIZER NUTRIENT	NITROGEN PHOSPHORUS NUTRIENT	NITROGEN POTASSIUM NUTRIENT	MULCH METHOD 2						
							SQ YD	ACRE	POUND	POUND	POUND	TON
							INFIELD	1651	0.34	20	20	20
TOTAL	1651	0.34	20	20	20	1						

**SCHEDULE OF DELINEATORS**

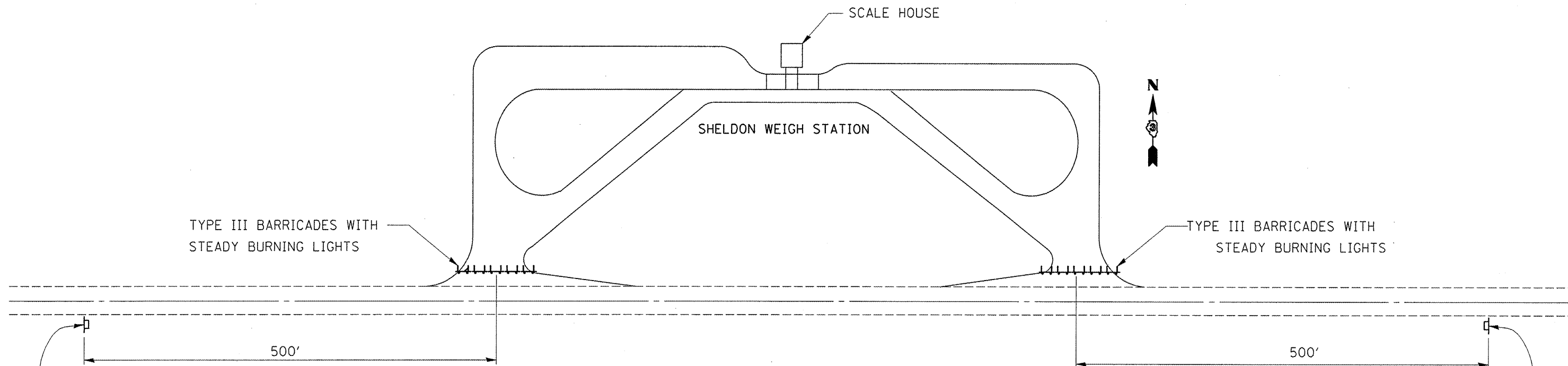
LOCATION	DELINEATOR REMOVAL	DELINEATORS
	EACH	EACH
	WEST EXIT	8
WEST ENTRANCE	7	31
EAST EXIT	9	54
EAST ENTRANCE	4	35
TOTAL	28	174

**SCHEDULE OF PCC WIDENING**

LOCATION		EARTH EXCAVATION (WIDENING)	SUB-BASE GRANULAR MATERIAL TYPE B 4"	TIE BARS	PAVEMENT FABRIC	PCC BASE CSE
						CSE.
						WIDENING 10"
		CU YD	SQ YD	EACH	SQ YD	SQ YD
WEST ENTRANCE	LT	24	61	50	61	61
	RT	27	70	65	70	70
EAST ENTRANCE	LT	31	80	73	80	80
	RT	24	61	50	61	61
EAST EXIT	LT	33	85	61	85	85
	RT					
TOTAL		138	357	299	357	357

**SCHEDULE OF HOT-MIX ASPHALT OVERLAY**

LOCATION	CONCRETE PAVEMENT SCARIFICATION	BITUMINOUS MATERIALS (PRIME COAT)	HOT-MIX ASPHALT SURFACE CSE.
			MIX C, N90
			TON
	SQ YD	GAL	TON
WEST ENTRANCE	458	37	52
EAST ENTRANCE	640	52	72
TOTAL	1098	89	124



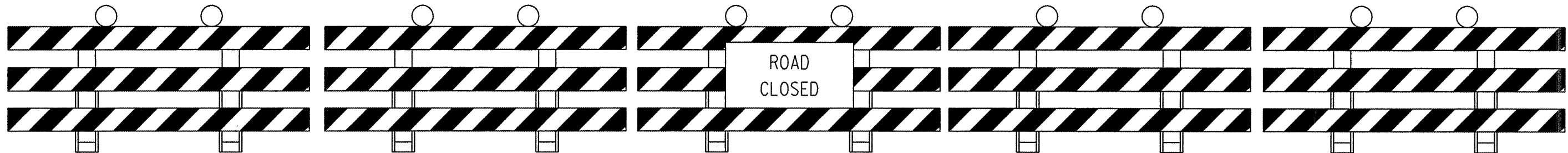
**PLAN**

WEIGH STATION CLOSED

BLACK ON ORANGE  
48" X 30" (FO)

WEIGH STATION CLOSED

BLACK ON ORANGE  
48" X 30" (FO)



**TYPICAL ROAD CLOSURE**

FILE NAME = c:\projects\main\09\cm312\details.dgn	USER NAME = carpenterdj	DESIGNED - Ron Woodshank	REVISED -
		DRAWN - Ron Woodshank	REVISED -
		PLOT SCALE = 100.0000' / IN.	REVISED -
		PLOT DATE = Jul 11, 2008 - 01:32:25 PM	REVISED -

STATE OF ILLINOIS  
DEPARTMENT OF TRANSPORTATION

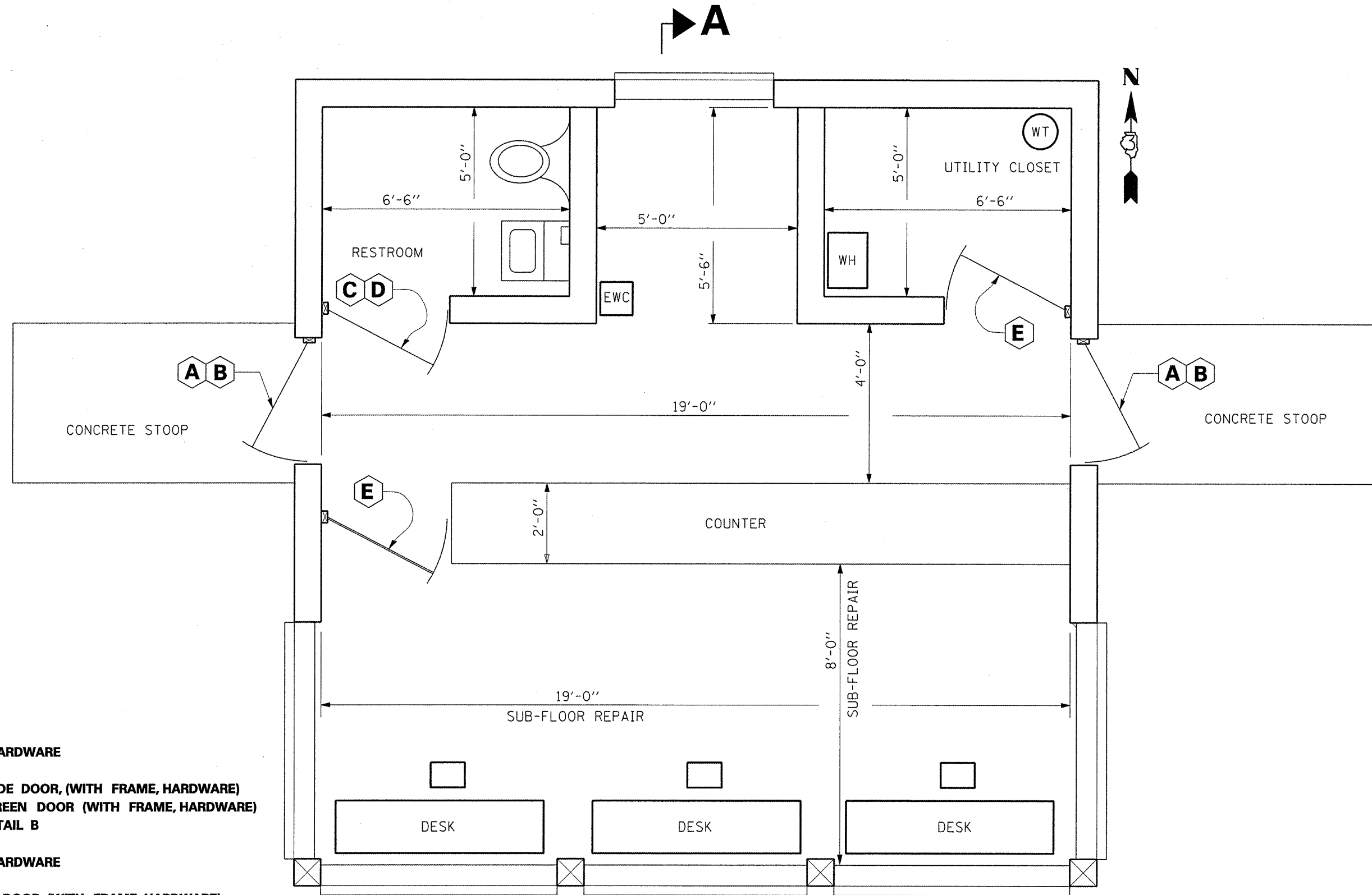
TRAFFIC CONTROL DETAILS

SCALE: SHEET NO. 1 OF 1 SHEETS STA. TO STA.

\* TRUCK WEIGH STATION #17 (I-1)

F.A.P. RTE.	SECTION	COUNTY	TOTAL SHEETS	SHEET NO.
317	*	IRROUOIS	19	8
FED. ROAD DIST. NO. ILLINOIS			CONTRACT NO. 66849	





▶ A



▶ A

**PLAN**

- A** REMOVE: DOOR, FRAME AND HARDWARE
- B** INSTALL: STEEL EXTERIOR GRADE DOOR, (WITH FRAME, HARDWARE)  
EXTERIOR GRADE SCREEN DOOR (WITH FRAME, HARDWARE)  
SEE DETAIL A. OR DETAIL B
- C** REMOVE: DOOR, FRAME AND HARDWARE
- D** INSTALL: SOLID WOOD GRADE DOOR, (WITH FRAME, HARDWARE)  
SEE DETAIL A.
- E** REMOVE: DOOR, ADJUST VERTICAL CLEARANCE TO FLOOR AND REINSTALL

FILE NAME =	USER NAME = carpenterdj	DESIGNED - Ron Woodshank	REVISED -
c:\projects\main\09\cm312\detail.s.dgn		DRAWN - Ron Woodshank	REVISED -
	PLOT SCALE = 1/8" = 1'-0"	CHECKED -	REVISED -
	PLOT DATE = Jul 11, 2008 - 01:32:31 PM	DATE -	REVISED -

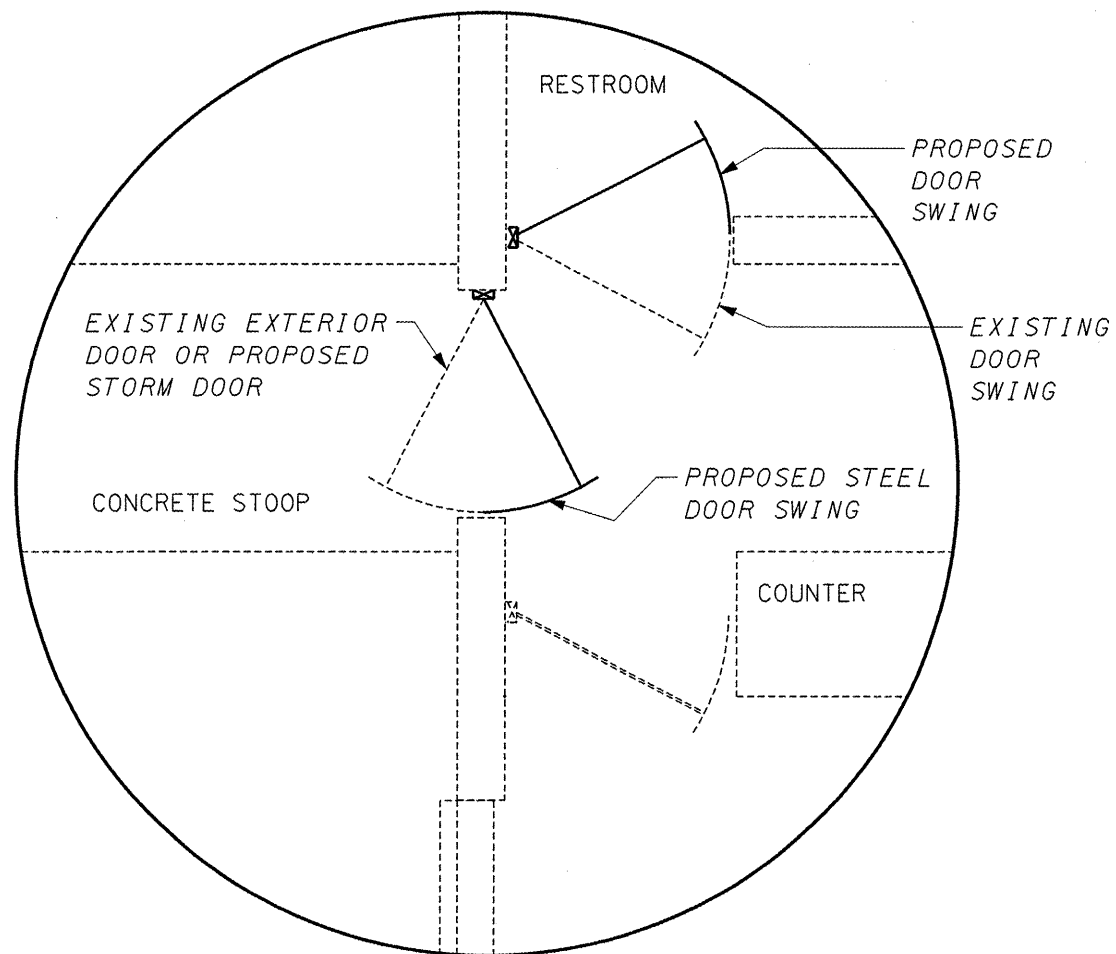
**STATE OF ILLINOIS  
DEPARTMENT OF TRANSPORTATION**

**SCALE HOUSE FLOOR PLAN**

SCALE: SHEET NO. 1 OF 2 SHEETS STA. TO STA.

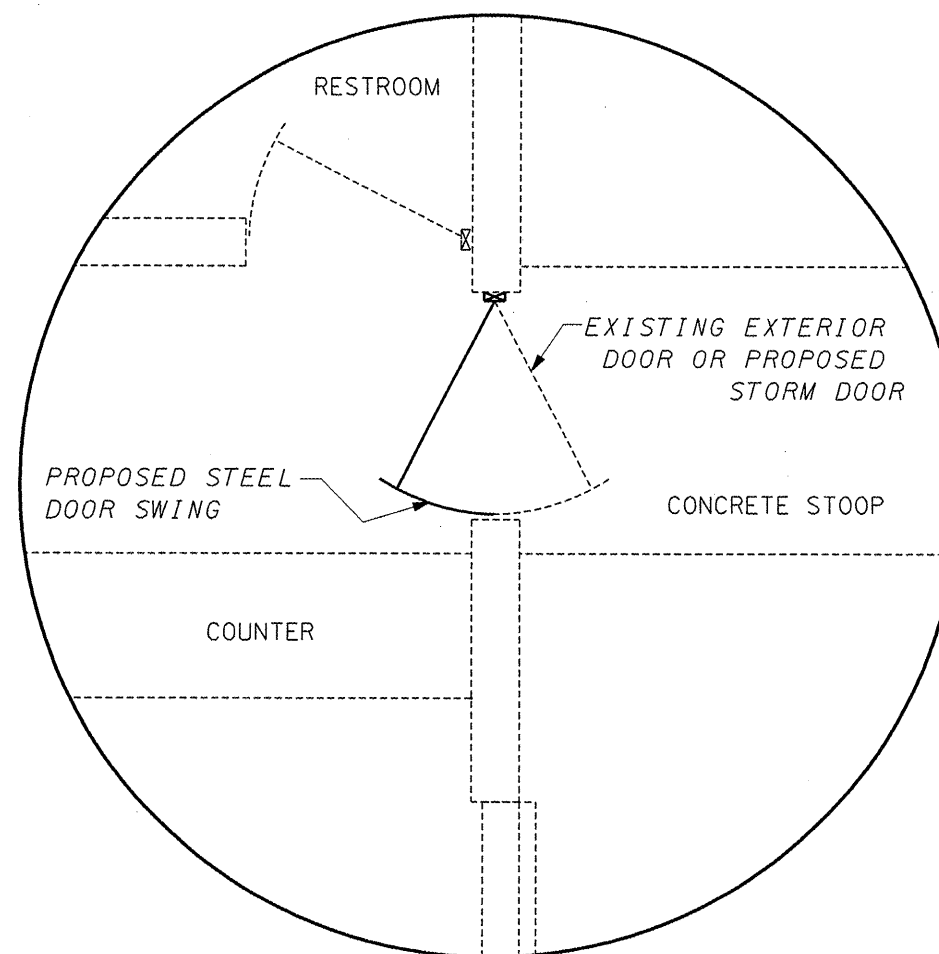
\* TRUCK WEIGH STATION #17 (I-1)

F.A.P. RTE.	SECTION	COUNTY	TOTAL SHEETS	SHEET NO.
317	*	IRROOUI'S	19	9
FED. ROAD DIST. NO. ILLINOIS			CONTRACT NO. 66849	



## DETAIL A

WEST ENTRANCE



## DETAIL B

EAST ENTRANCE

FILE NAME =  
c:\projects\main09\cm312\details.dgn

USER NAME = carpentardj

DESIGNED - Ron Woodshank

REVISED -

DRAWN - Ron Woodshank

REVISED -

CHECKED -

REVISED -

DATE -

REVISED -

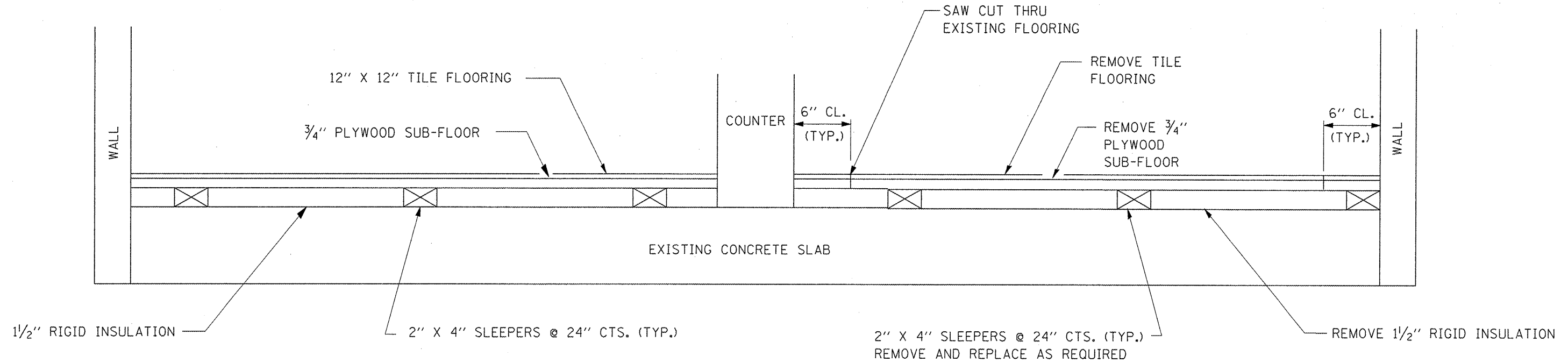
STATE OF ILLINOIS  
DEPARTMENT OF TRANSPORTATION

SCALE HOUSE FLOOR PLAN

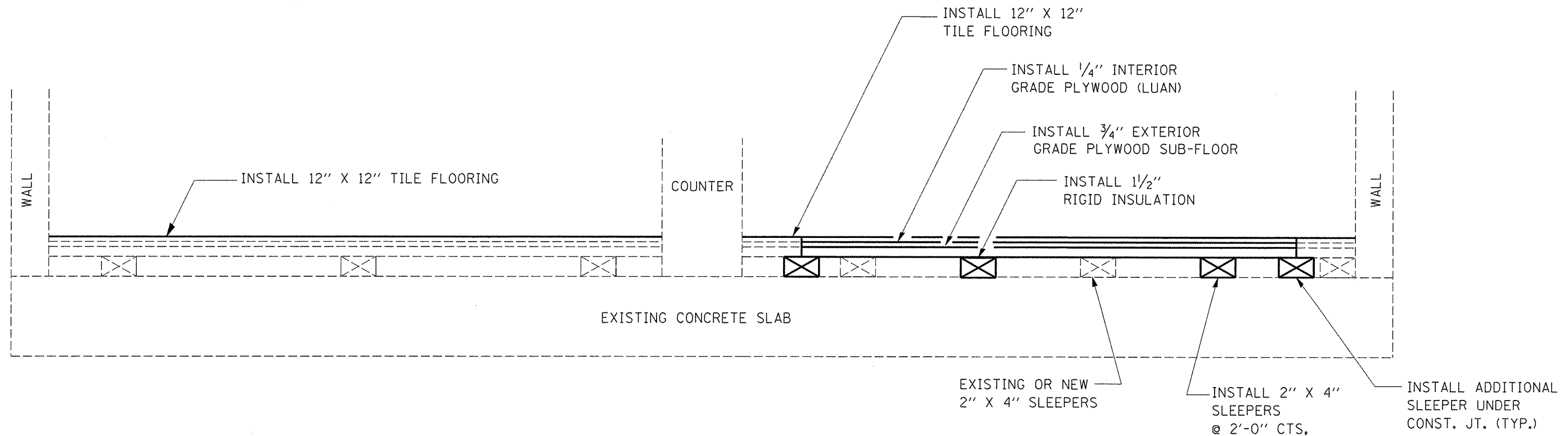
SCALE: SHEET NO. 2 OF 2 SHEETS STA. TO STA.

TRUCK WEIGH STATION #17 (I-1)

F.A.P. RTE.	SECTION	COUNTY	TOTAL SHEETS	SHEET NO.
317	*	IROQUOIS	19	10
FED. ROAD DIST. NO. ILLINOIS			CONTRACT NO. 66849	



## EXISTING SECTION A-A



## PROPOSED SECTION A-A

FILE NAME =	USER NAME = carpenterdj	DESIGNED - Ron Woodshank	REVISED -
c:\projects\main09\cm312\details.dgn		DRAWN - Ron Woodshank	REVISED -
PLOT SCALE = 100.0000 / IN.		CHECKED -	REVISED -
PLOT DATE = Jul 11, 2008 - 01:32:44 PM		DATE -	REVISED -

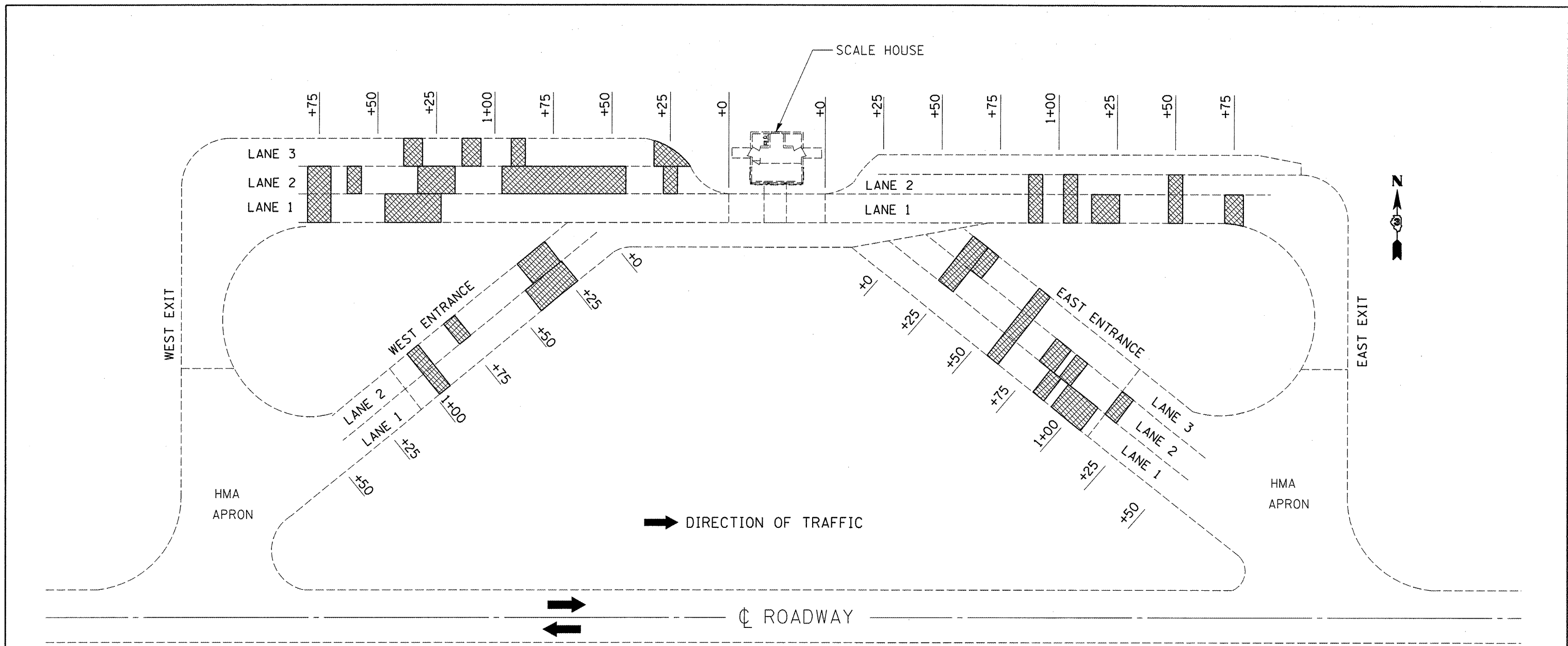
**STATE OF ILLINOIS  
DEPARTMENT OF TRANSPORTATION**

SECTION A-A

SCALE: SHEET NO. 1 OF 1 SHEETS STA. TO STA.

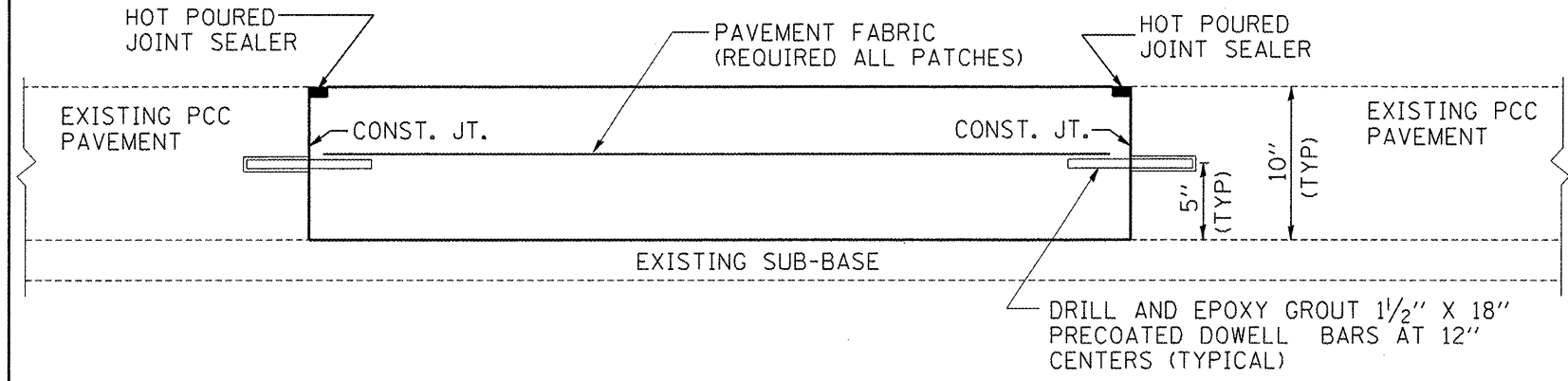
\* TRUCK WEIGH STATION #17 (I-1)

F.A.P. RTE. 317	SECTION	COUNTY IROQUOIS	TOTAL SHEETS 19	SHEET NO. 11
FED. ROAD DIST. NO.	ILLINOIS	CONTRACT NO. 66849		



# PLAN

NOTE: SEE STANDARD 442101 FOR DETAILS NOT SHOWN



# CLASS B PATCHING DETAIL

FILE NAME =	USER NAME = carpenterdj	DESIGNED - Ron Woodshank	REVISED -
cr\projects\main09\com312\details.dgn		DRAWN - Ron Woodshank	REVISED -
		CHECKED -	REVISED -
		DATE -	REVISED -

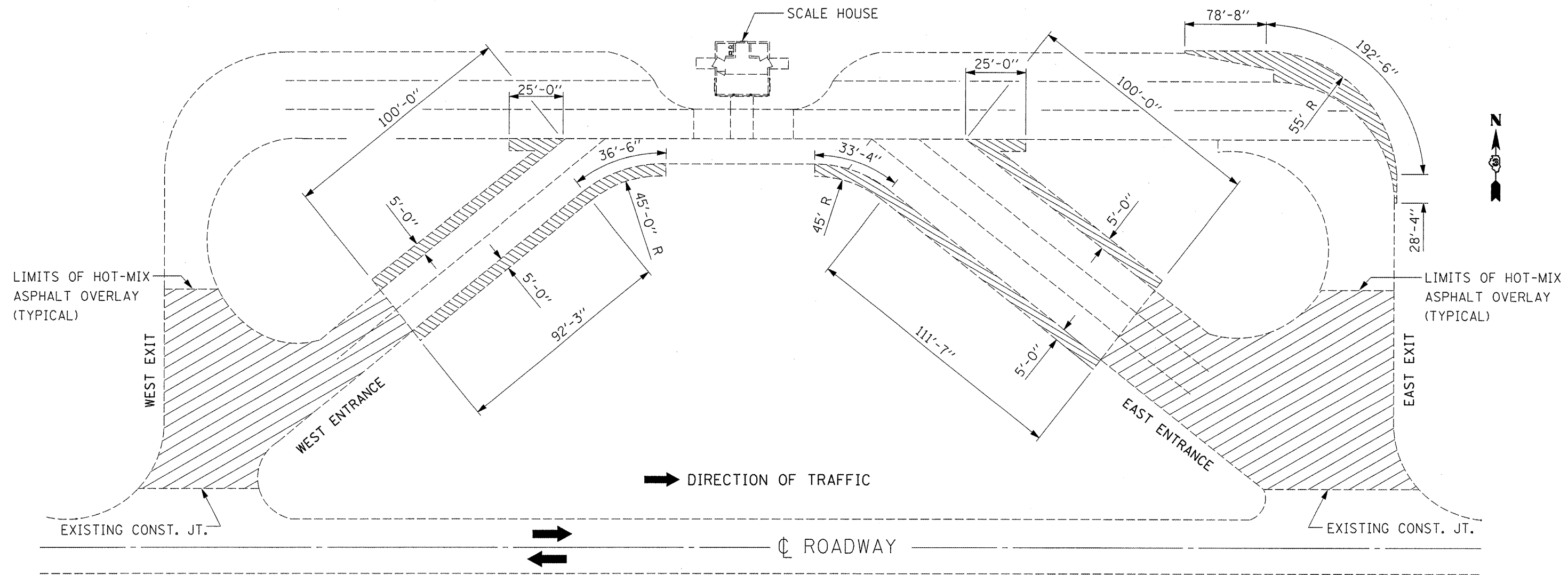
**STATE OF ILLINOIS  
DEPARTMENT OF TRANSPORTATION**

**CLASS B PATCHING**

SCALE: SHEET NO. 1 OF 1 SHEETS STA. TO STA.

\* TRUCK WEIGH STATION #17 (I-1)

F.A.P. RTE.	SECTION	COUNTY	TOTAL SHEETS	SHEET NO.
317	*	IRROUOIS	19	12
FED. ROAD DIST. NO. ILLINOIS			CONTRACT NO. 66849	



# PLAN



**EARTH EXCAVATION FOR PCC WIDENING**



**CONCRETE PAVEMENT SCARIFICATION**

FILE NAME =	USER NAME = carpenterdj	DESIGNED - Ron Woodshank	REVISED -
at\projects\cmoin\cm312\details.dgn		DRAWN - Ron Woodshank	REVISED -
		CHECKED -	REVISED -
		DATE -	REVISED -

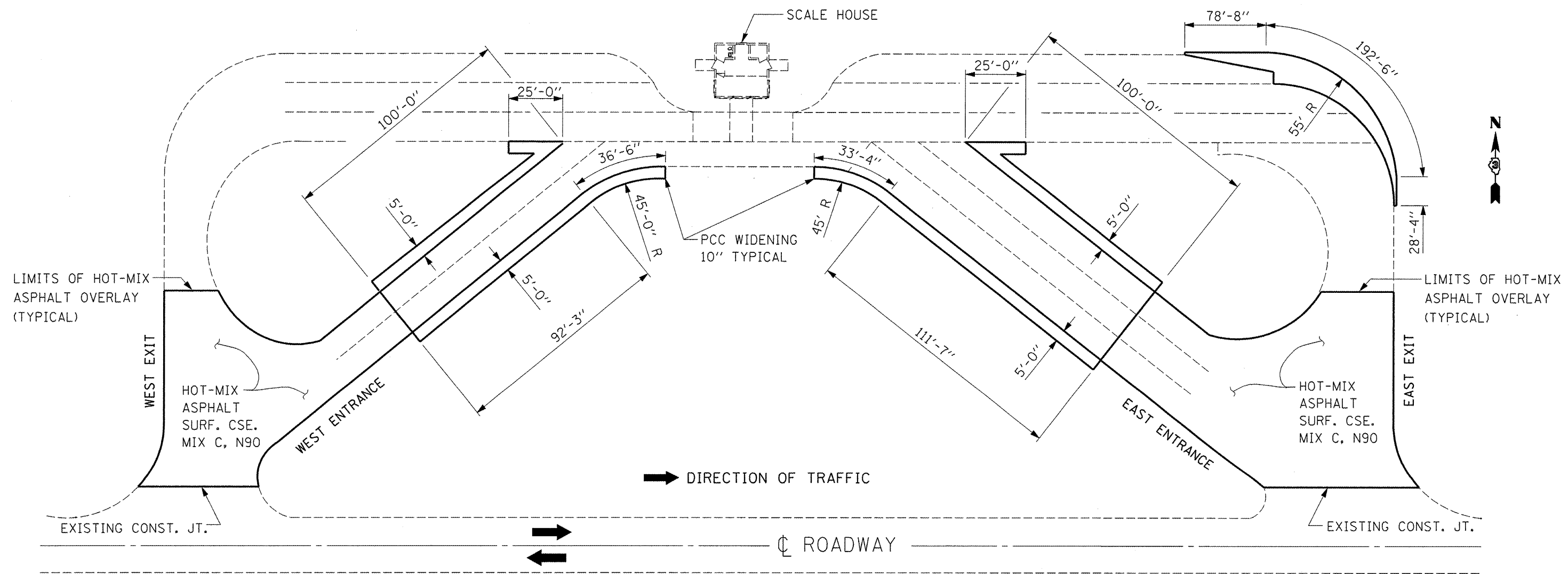
**STATE OF ILLINOIS  
DEPARTMENT OF TRANSPORTATION**

**PAVEMENT DETAILS**

SCALE: SHEET NO. 1 OF 3 SHEETS STA. TO STA.

\* TRUCK WEIGH STATION #17 (1-1)

F.A.P. RTE. 317	SECTION *	COUNTY IROQUOIS	TOTAL SHEETS 19	SHEET NO. 13
FED. ROAD DIST. NO. [ILLINOIS]		CONTRACT NO. 66849		



# PLAN

FILE NAME =	USER NAME = carpenterdj	DESIGNED - Ron Woodshank	REVISED -
c:\projects\main09\cm312\details.dgn		DRAWN - Ron Woodshank	REVISED -
PLOT SCALE = 100.0000' / IN.		CHECKED -	REVISED -
PLOT DATE = Jul 11, 2008 - 01:33:03 PM		DATE -	REVISED -

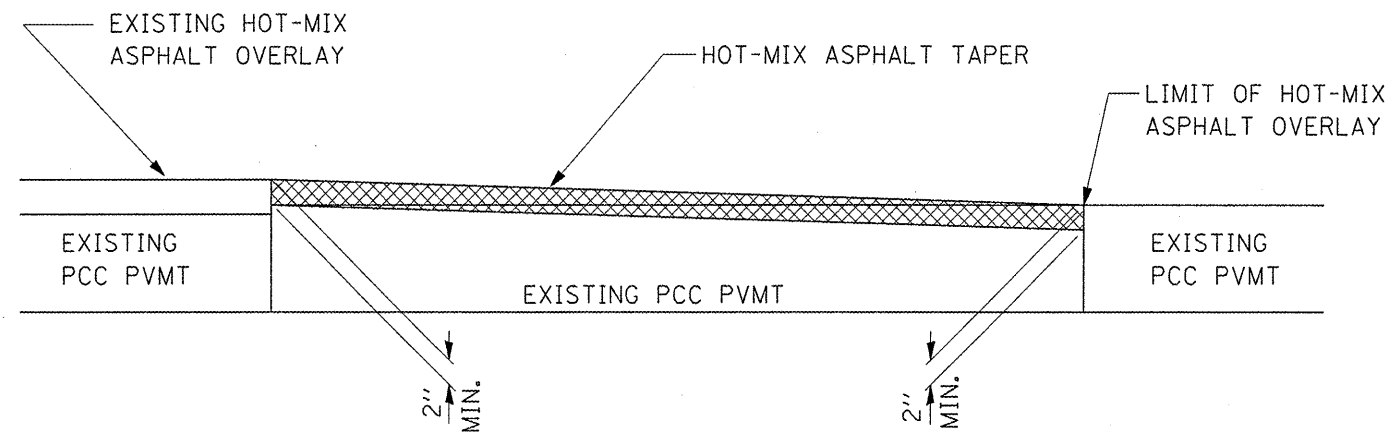
**STATE OF ILLINOIS  
DEPARTMENT OF TRANSPORTATION**

**PAVEMENT DETAILS**

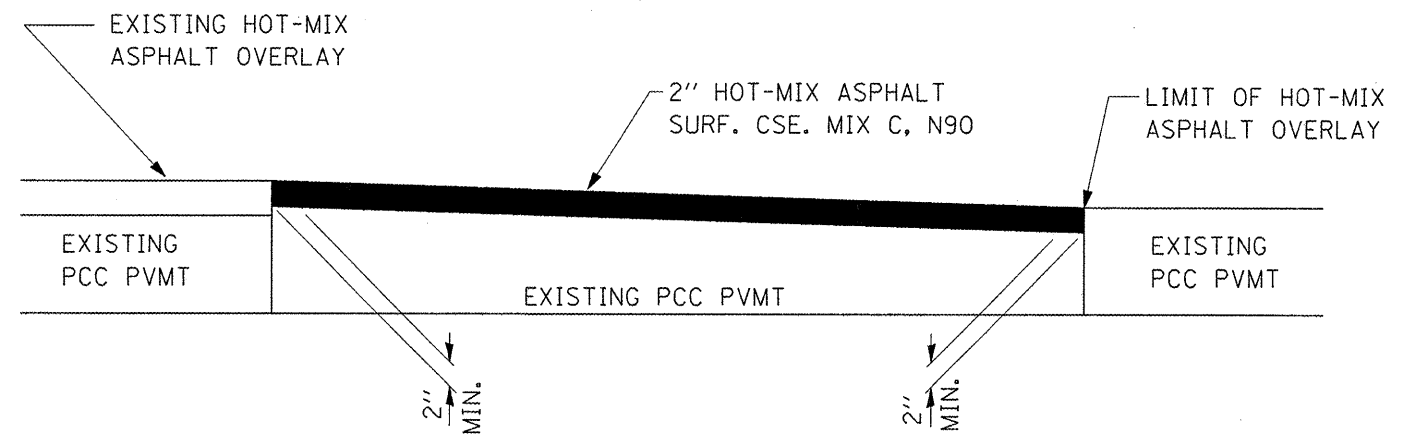
SCALE: SHEET NO. 2 OF 3 SHEETS STA. TO STA.

\* TRUCK WEIGH STATION #17 (I-1)

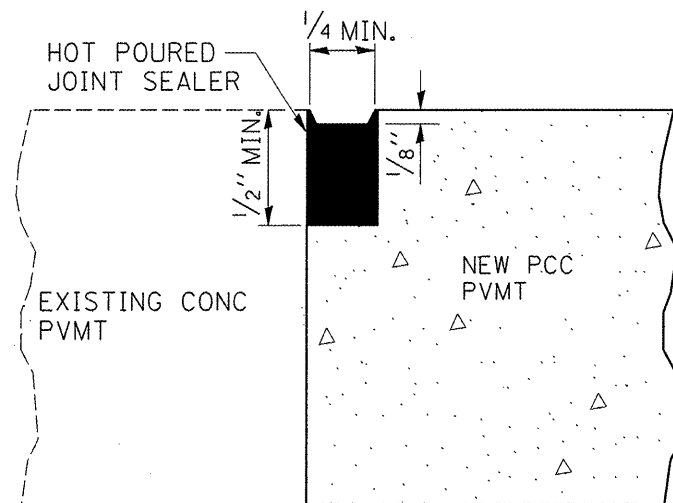
F.A.P. RTE.	SECTION	COUNTY	TOTAL SHEETS	SHEET NO.
317	*	IRROUOIS	19	14
FED. ROAD DIST. NO. ILLINOIS			CONTRACT NO. 66849	



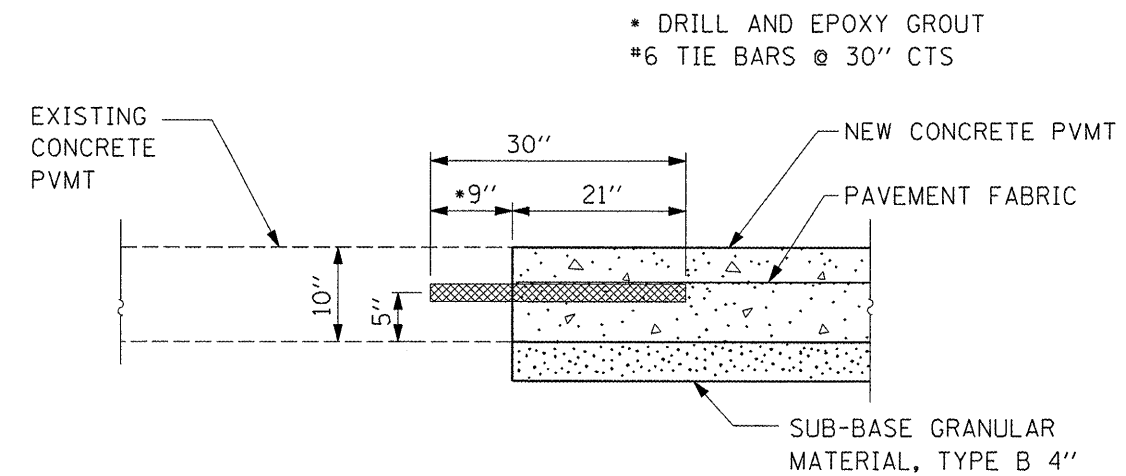
**EXISTING PAVEMENT DETAIL**



**PROPOSED PAVEMENT DETAIL**



**SAWED JOINT DETAIL**



**WIDENING CROSS SECTION**

FILE NAME =	USER NAME = carpentardj	DESIGNED - Ron Woodshank	REVISED -
c:\projects\main\09\cm312\details.dgn		DRAWN - Ron Woodshank	REVISED -
PLOT SCALE = 100.0000' / IN.		CHECKED -	REVISED -
PLOT DATE = Jul 11, 2008 - 01:33:08 PM		DATE -	REVISED -

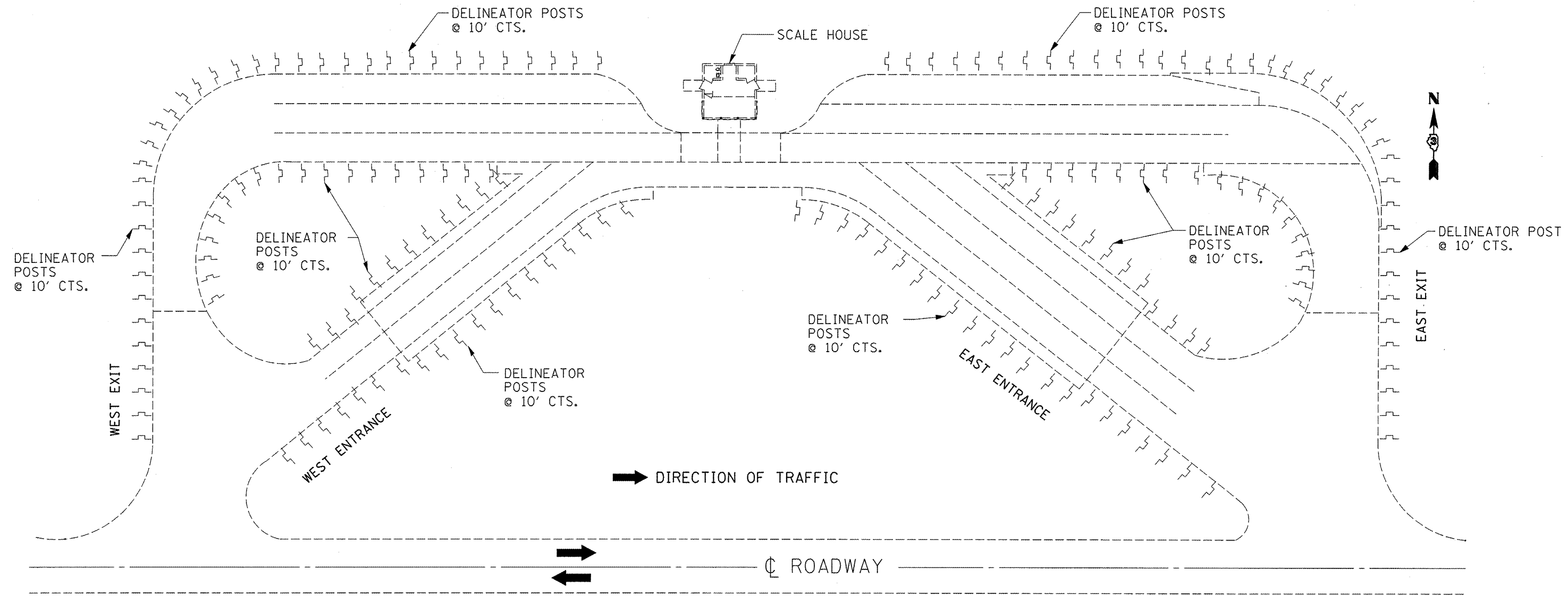
**STATE OF ILLINOIS  
DEPARTMENT OF TRANSPORTATION**

**PAVEMENT DETAILS**

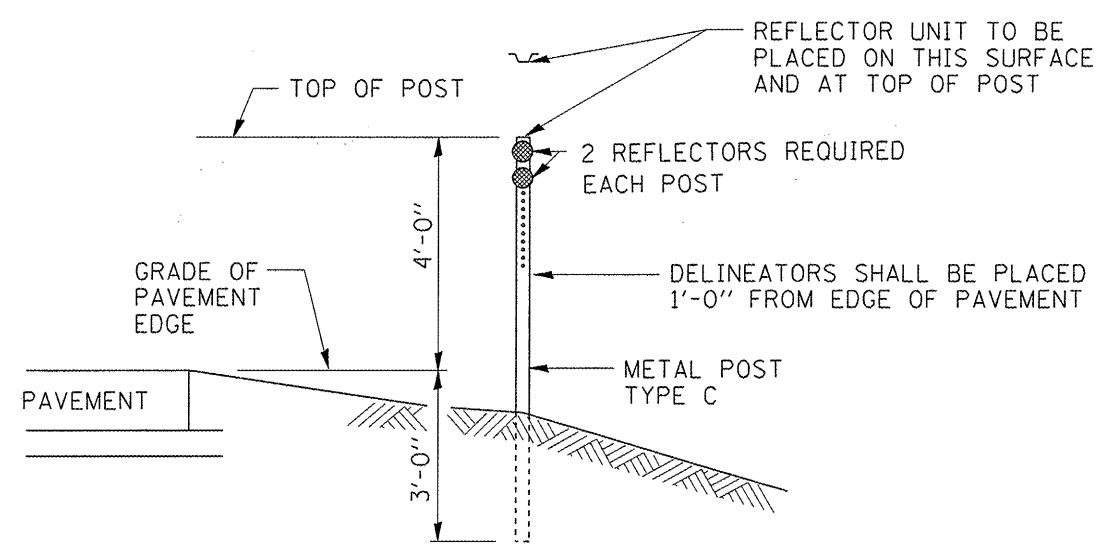
SCALE: SHEET NO. 3 OF 3 SHEETS STA. TO STA.

\* TRUCK WEIGH STATION #17 (I-1)

F.A.P. RTE.	SECTION	COUNTY	TOTAL SHEETS	SHEET NO.
317		IROQUOIS	19	15
FED. ROAD DIST. NO. ILLINOIS			CONTRACT NO. 66849	



# PLAN



# POST

### GENERAL NOTES

REFER TO STANDARD 720011 FOR DETAILS OF METAL POST.  
 DOUBLE WHITE REFLECTOR UNITS SHALL BE USED TO MARK THE RIGHT SIDE OF ALL LANES AND DOUBLE AMBER REFLECTORS SHALL BE USED TO MARK THE LEFT SIDE OF ALL LANES.

FILE NAME = c:\projects\main\09\cm312\details.dgn	USER NAME = carpenterdj	DESIGNED - Ron Woodshank	REVISED -
		DRAWN - Ron Woodshank	REVISED -
		CHECKED -	REVISED -
		DATE -	REVISED -

**STATE OF ILLINOIS  
 DEPARTMENT OF TRANSPORTATION**

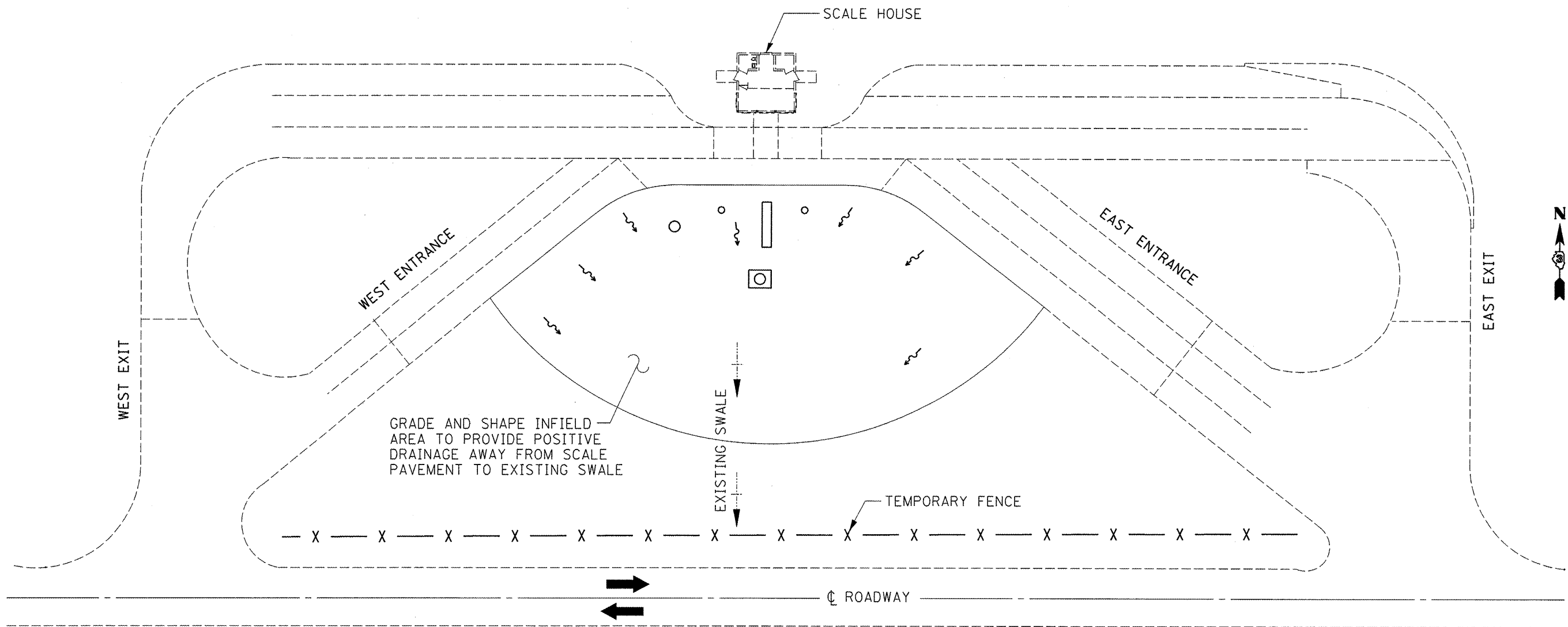
*DELINEATOR DETAILS*

SCALE: SHEET NO. 1 OF 1 SHEETS STA. TO STA.

\* TRUCK WEIGH STATION #17 (1-1)

F.A.P. RTE.	SECTION	COUNTY	TOTAL SHEETS	SHEET NO.
317	*	IROUOIS	19	16
FED. ROAD DIST. NO. ILLINOIS			CONTRACT NO. 66849	





NOTE: GRADES SHALL BE FIELD DETERMINED AT TIME OF CONSTRUCTION.

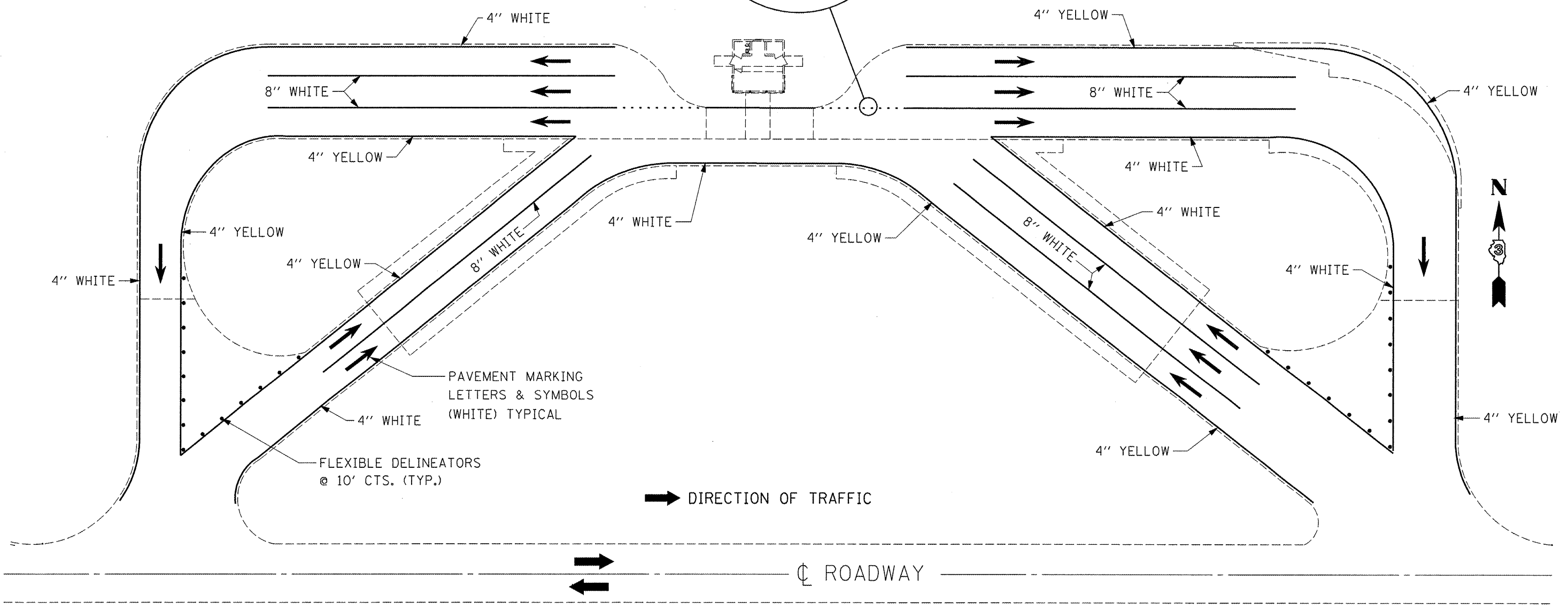
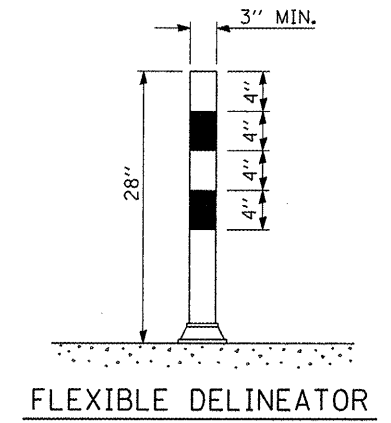
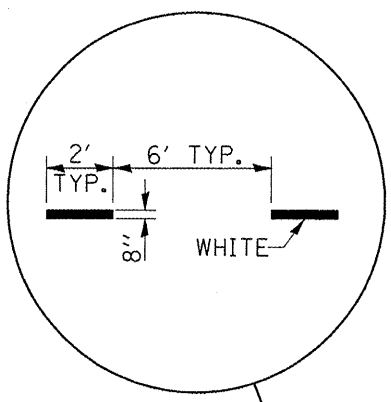
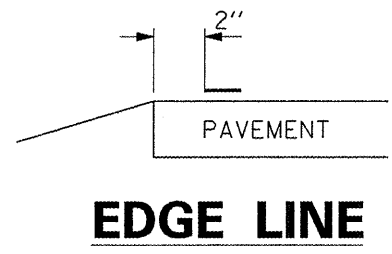
→ DIRECTION OF TRAFFIC

# PLAN

- STEEL FLAG POLE
- BRICK PAD
- LIGHT POLE
- POWER POLE

FILE NAME *	USER NAME = carpenterdj	DESIGNED - Ron Woodshank	REVISED -	<b>STATE OF ILLINOIS DEPARTMENT OF TRANSPORTATION</b>	<b>GRADING EXISTING INFIELD</b>	F.A.P. RTE.	SECTION	COUNTY	TOTAL SHEETS	SHEET NO.	
ct:\projects\cmain09\cm312\details.dgn		DRAWN - Ron Woodshank	REVISED -			317	*	IRROUOIS	19	17	
PLOT SCALE = 100.0000' / IN.		CHECKED -	REVISED -			CONTRACT NO. 66849					
PLOT DATE = Jul 11, 2008 - 01:33:20 PM		DATE -	REVISED -			SCALE:	SHEET NO. 1 OF 1 SHEETS	STA.	TO STA.	FED. ROAD DIST. NO.	ILLINOIS

\* TRUCK WEIGH STATION #17 (I-1)



**PLAN**

FILE NAME =	USER NAME = carpenterdj	DESIGNED - Ron Woodshank	REVISED -
c:\projects\omain09\am312\details.dgn		DRAWN - Ron Woodshank	REVISED -
PLOT SCALE = 100.0000' / IN.		CHECKED -	REVISED -
PLOT DATE = Jul 11, 2008 - 01:33:26 PM		DATE -	REVISED -

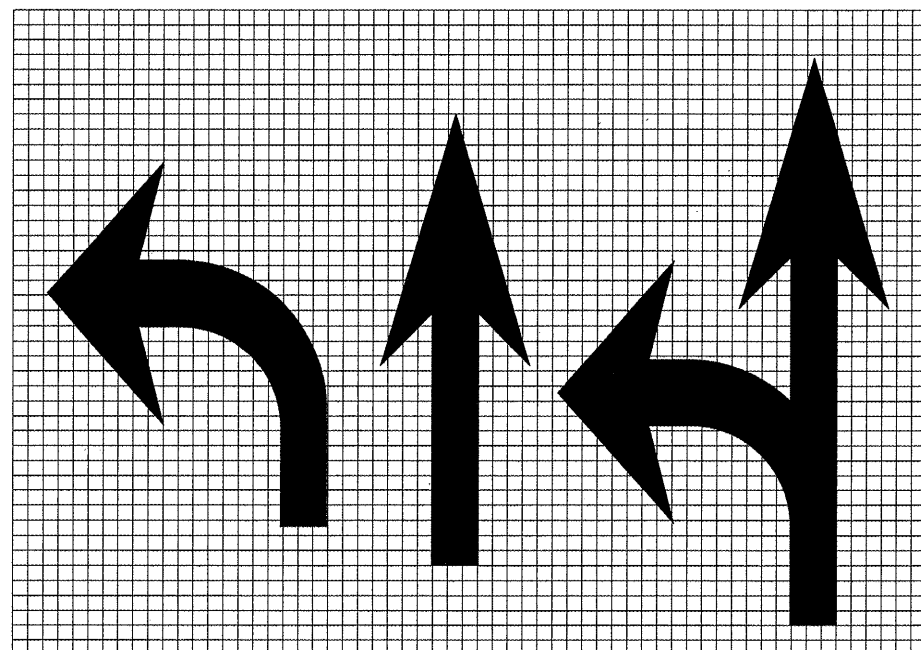
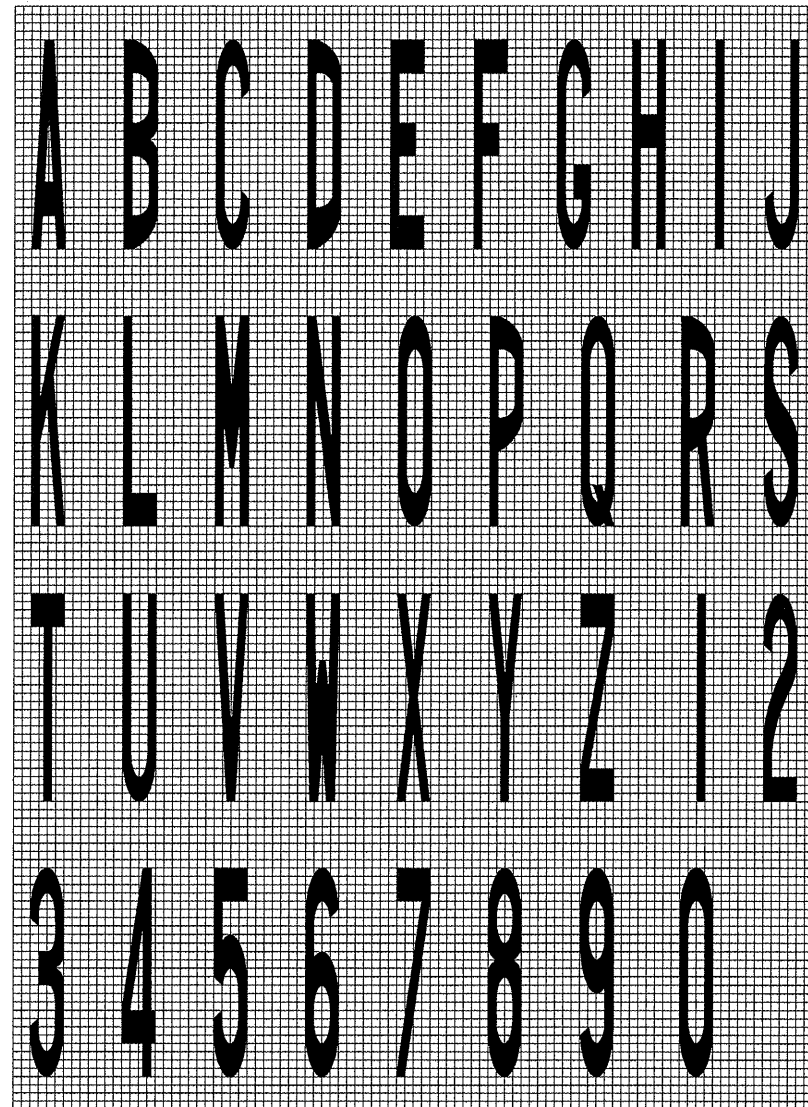
**STATE OF ILLINOIS**  
**DEPARTMENT OF TRANSPORTATION**

**PAVEMENT MARKING**

SCALE: SHEET NO. 1 OF 2 SHEETS STA. TO STA.

TRUCK WEIGH STATION #17 (I-1)

F.A.P. RTE. 317	SECTION *	COUNTY IROQUOIS	TOTAL SHEETS 19	SHEET NO. 18
FED. ROAD DIST. NO.	ILLINOIS	CONTRACT NO. 66849		



LEGEND HEIGHT	ARROW SIZE	a
6'	SMALL	2.9
8'	LARGE	3.8

THE SPACE BETWEEN ADJACENT LETTERS OR NUMERALS SHOULD BE APPROXIMATELY 3' FOR 6' LEGEND AND 4' FOR 8' LEGEND.

**LETTER AND ARROW GRID SCALE**

**780-20**

FILE NAME * c:\projects\main09\cm312\details.dgn	USER NAME = carpenterdj	DESIGNED - Ron Woodshank	REVISED -
		DRAWN - Ron Woodshank	REVISED -
	PLOT SCALE = 100.0000' / IN.	CHECKED -	REVISED -
	PLOT DATE = Jul 11, 2008 - 01:33:33 PM	DATE -	REVISED -

**STATE OF ILLINOIS  
DEPARTMENT OF TRANSPORTATION**

**PAVEMENT MARKING**

SCALE: SHEET NO. 2 OF 2 SHEETS STA. TO STA.

\* TRUCK WEIGH STATION #17 (I-1)

F.A.P. RTE.	SECTION	COUNTY	TOTAL SHEETS	SHEET NO.
317	*	IROOOUIS	19	19
FED. ROAD DIST. NO. ILLINOIS			CONTRACT NO. 66849	