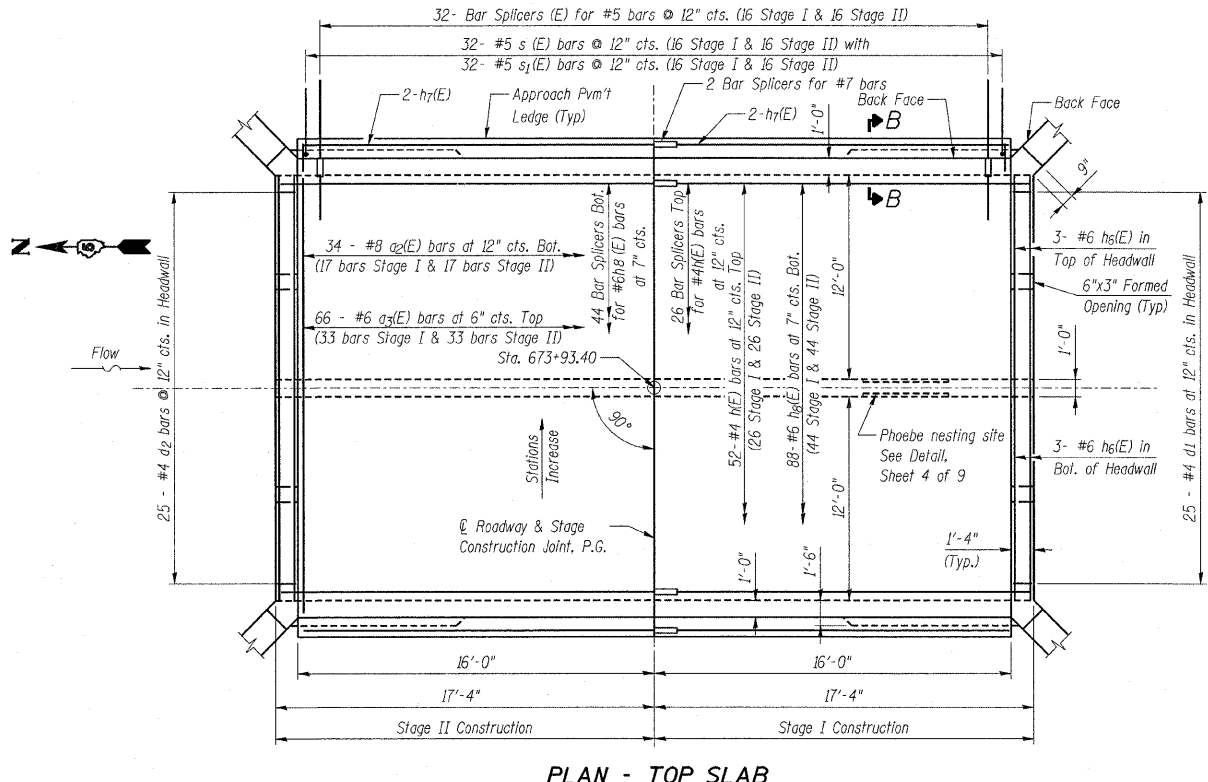
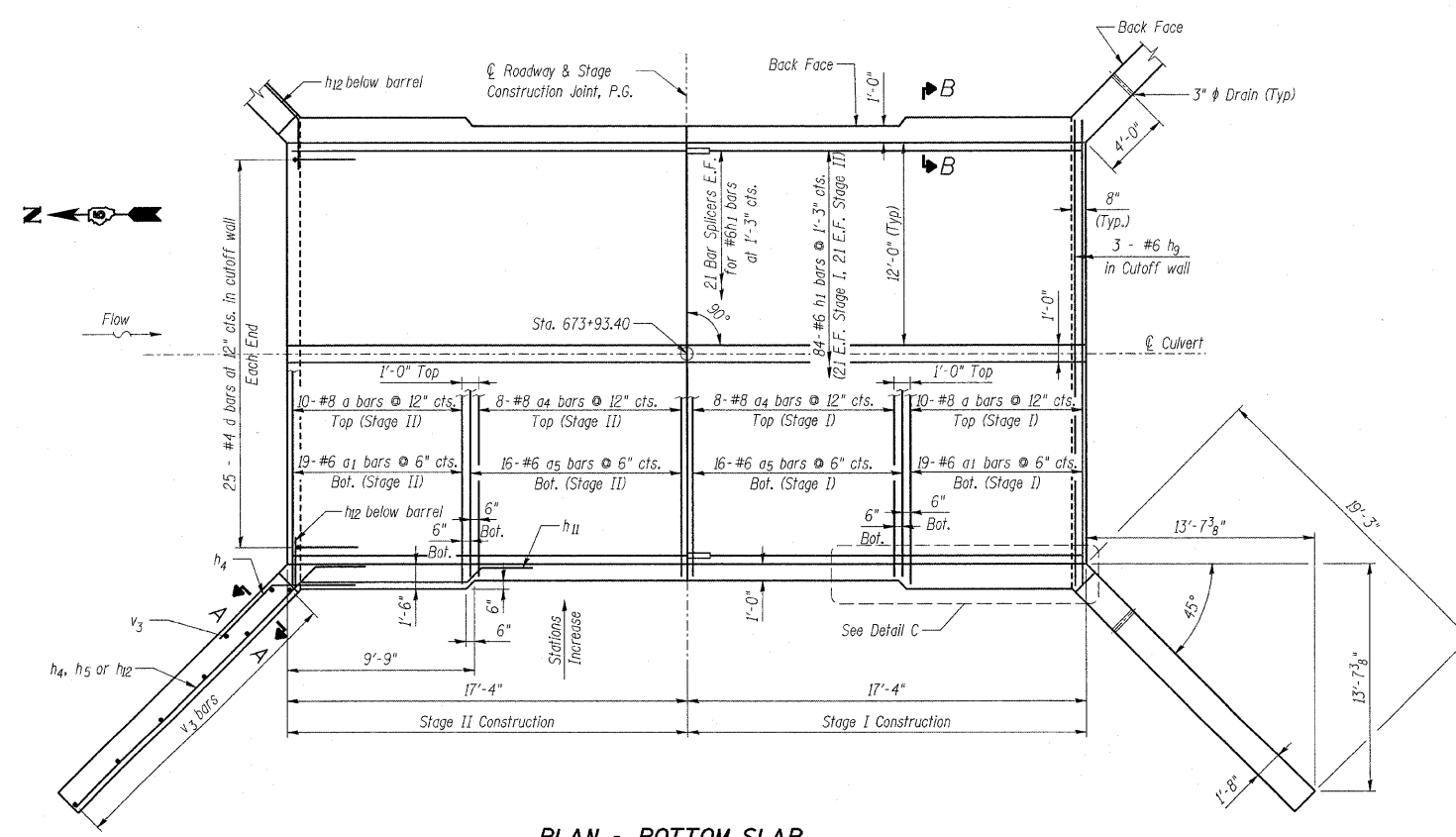
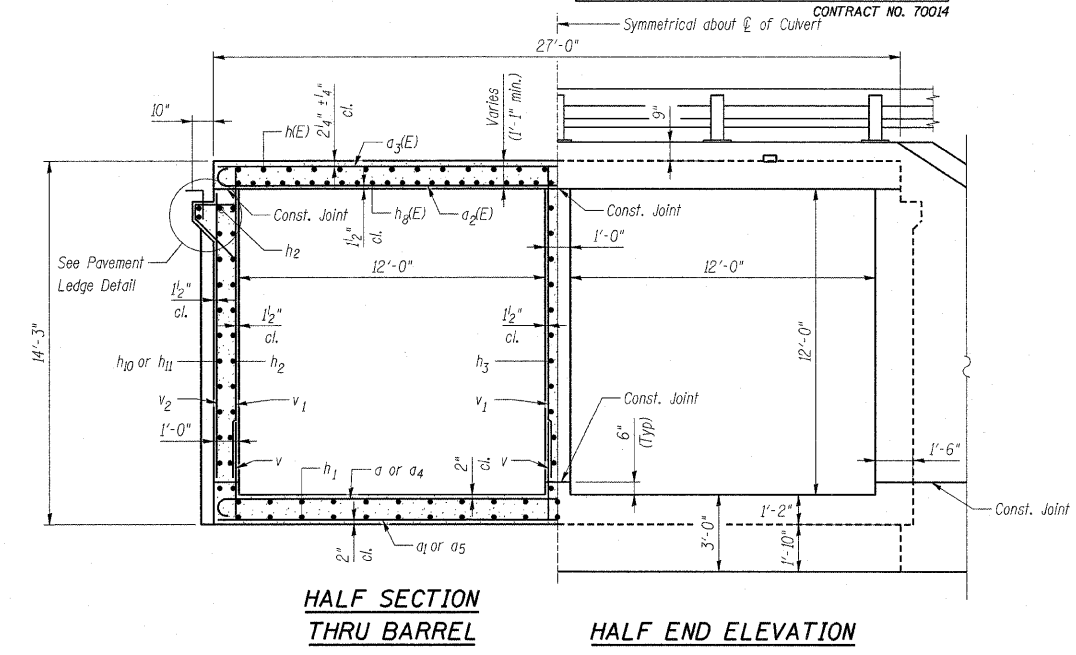
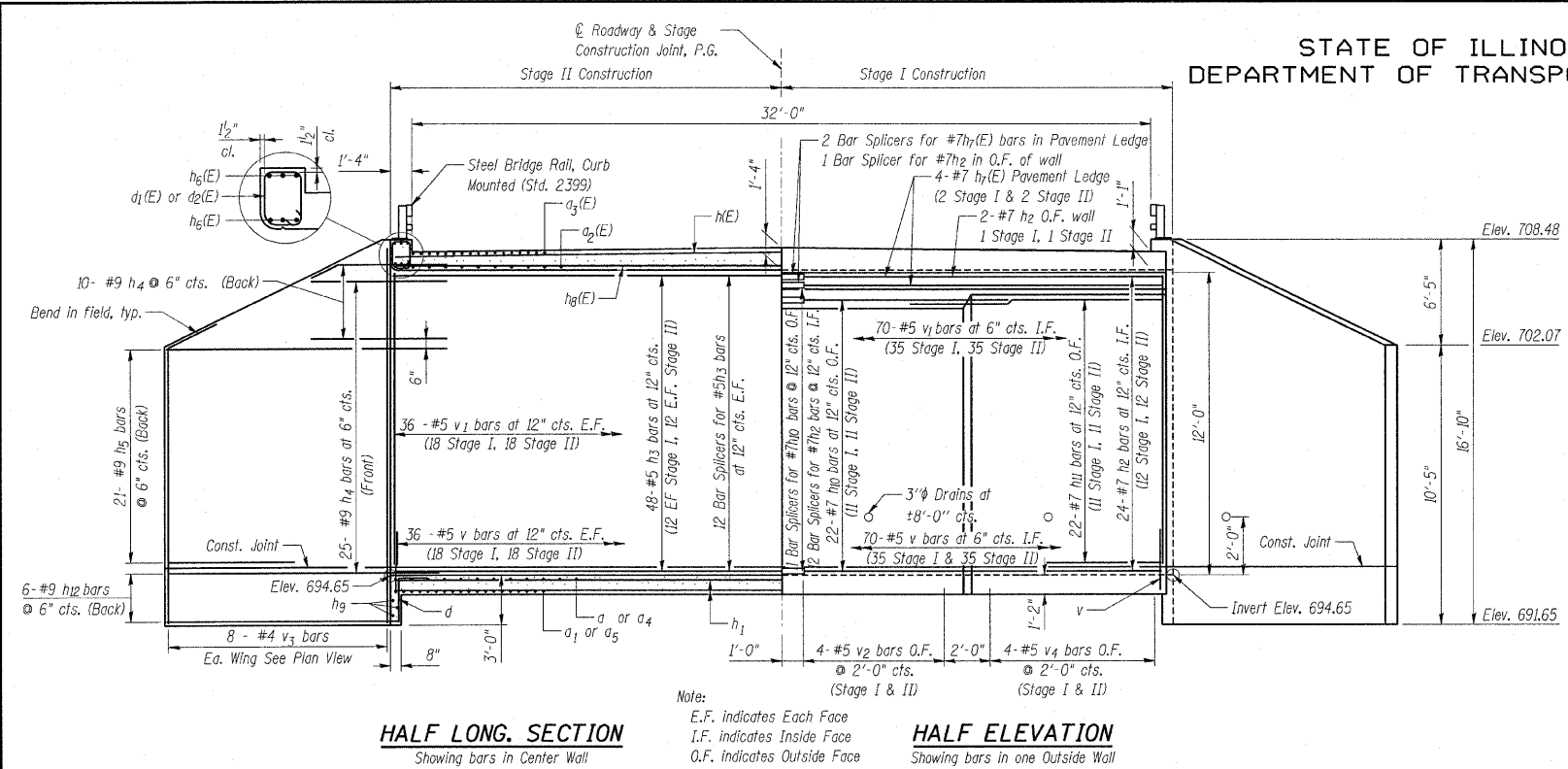


STATE OF ILLINOIS
DEPARTMENT OF TRANSPORTATION

ROUTE NO.	SECTION	COUNTY	ITEMS SHEETS	SHEET NO.
FAP 721	114BR-2	DEWITT	64	31
FED. ROAD DIST. NO. 8	ILLINOIS	FED. AID PROJECT		

SHEET NO. 3 OF
9 SHEETS



DESIGNED	BWB
CHECKED	MAA
DRAWN	PJP
CHECKED	BSC

- NOTES:**
- A distance of half the length of the wingwall but not less than six feet of the barrel shall be poured monolithically with the wingwalls.
 - Reinforcement bars designated (E) shall be epoxy coated.
 - For additional Culvert Details, Sections A-A, B-B, Detail C & Pavement Ledge, see Sheet 4 of 9.

PLANS PREPARED BY:
WOOLPERT LLP
343 Fountains Parkway, Suite A
Fairview Heights, IL
62208-2044
618.632.7004
FAX: 618.632.0100

STATE OF ILLINOIS
DEPARTMENT OF TRANSPORTATION
IL ROUTE 10 OVER
FRIENDS CREEK DITCH
FAP 721 - SECTION 114BR-2
DEWITT COUNTY
STATION 673+93.40
STRUCTURE No. 020-2010
CULVERT DETAILS