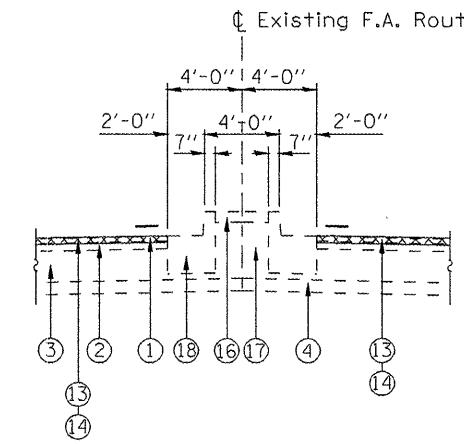
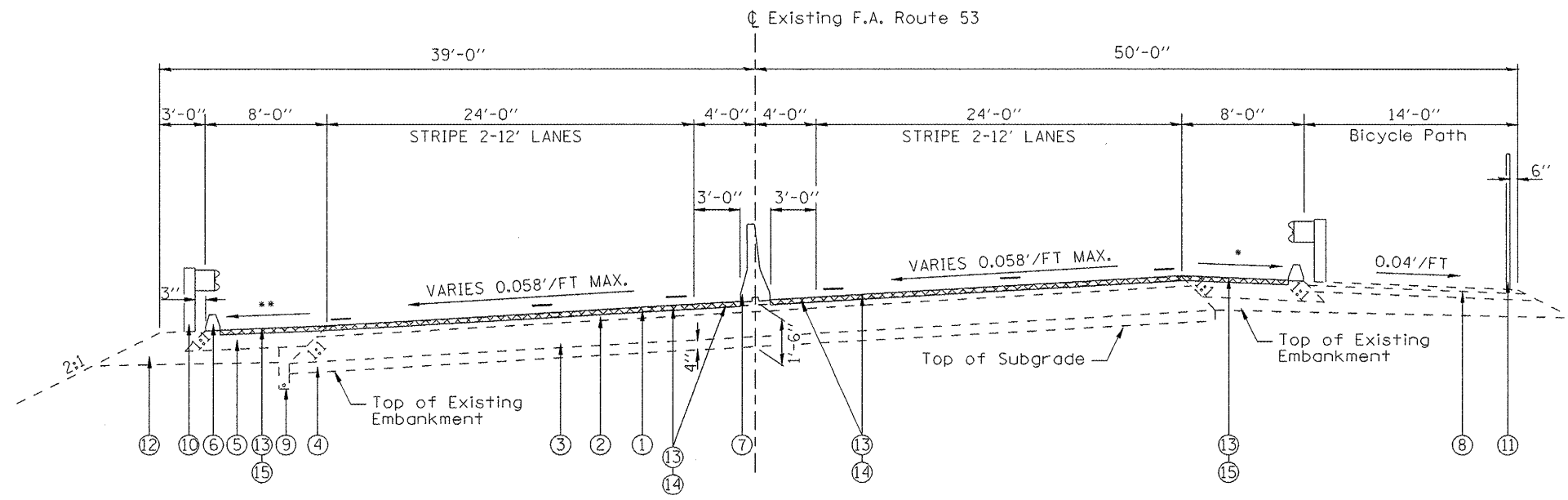


FAP 315 (US 136)  
 STA 97+13 TO 101+25  
 STA 110+35 TO STA 115+95.88



FAP 315 (US 136)  
 STA 111+16 TO STA 111+58.43  
 STA 112+29.57 TO STA 115+95.88



FAP 315 (US 136)  
 STA 101+25 TO STA 110+35

\* 8% MAX BREAKOVER  
 \*\* SAME AS SE, BUT NOT LESS THAN 4.0%

LEGEND

- ① EXISTING 1 1/2" BITUMINOUS CONCRETE SURFACE COURSE, MIXTURE D, CLASS I
- ② EXISTING 2 1/2" BITUMINOUS CONCRETE BINDER COURSE
- ③ EXISTING 10" BITUMINOUS BASE COURSE
- ④ EXISTING 4" SUB BASE GRANULAR MATERIAL, TYPE A
- ⑤ EXISTING 8" BITUMINOUS SHOULDER
- ⑥ BITUMINOUS CONCRETE CURB
- ⑦ EXISTING CONCRETE BARRIER, DOUBLE FACE
- ⑧ EXISTING 4" BITUMINOUS CONCRETE SURFACE COURSE, MIXTURE C, CLASS I
- ⑨ EXISTING PIPE UNDERDRAIN, 4"
- ⑩ EXISTING STEEL PLATE BEAM GUARDRAIL, TYPE A
- ⑪ EXISTING 4'-6" CHAIN LINK FENCE
- ⑫ EXISTING BACKFILL
- ⑬ PROPOSED BITUMINOUS SURFACE REMOVAL 1 1/2"
- ⑭ PROPOSED BITUMINOUS SURFACE 1 1/2"
- ⑮ PROPOSED BITUMINOUS SHOULDER 1 1/2"
- ⑯ EXISTING CONCRETE MEDIAN SURFACE 4" (TYPE P)
- ⑰ EXISTING SANDFILL
- ⑱ EXISTING COMBINATION CONCRETE CURB AND GUTTER, TYPE B-9.24
- ⑲ EXISTING LEVELING BINDER

FILE NAME = C:\Projects\d603408\shittyprools.dgn	USER NAME = laughlinr1	DESIGNED -	REVISED -	<b>STATE OF ILLINOIS DEPARTMENT OF TRANSPORTATION</b>	<b>TYPICAL CROSS SECTION</b>				F.A.P. RTE.	SECTION	COUNTY	TOTAL SHEETS	SHEET NO.
	PLOT SCALE = 10.0000' / IN.	DRAWN -	REVISED -						315	23 RS-2	HANCOCK	15	7
PLOT DATE = Jul-09-2008 11:59:53AM	CHECKED -	REVISED -	REVISED -	SCALE:	SHEET NO.	OF SHEETS	STA.	TO STA.	FED. ROAD DIST. NO. ILLINOIS FED. AID PROJECT CONTRACT NO. 72C31				