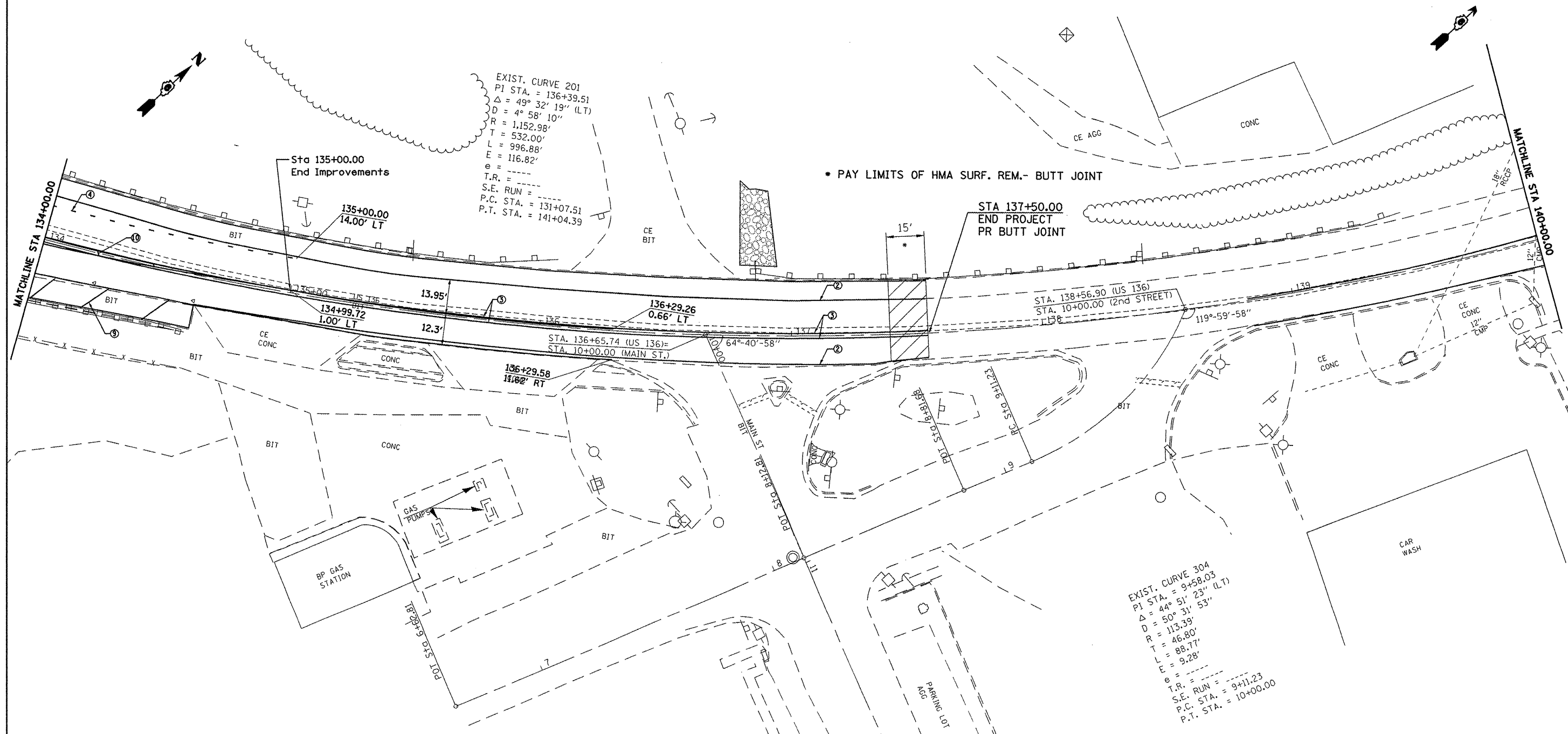


PAVEMENT MARKING LEGEND

- ① PR PREFORMED PLASTIC PAVEMENT MARKING, TYPE B - LINE 5" (WHITE, 30' SKIP, 10' DASH)
- ② PR THERMOPLASTIC PAVEMENT MARKING - LINE 5" (WHITE, SOLID)
- ③ PR THERMOPLASTIC PAVEMENT MARKING - LINE 5" (YELLOW, SOLID)
- ④ PR PREFORMED PLASTIC PAVEMENT MARKING, TYPE B - LINE 5" (WHITE, 6' SKIP, 2' DASH)
- ⑤ PR THERMOPLASTIC PAVEMENT MARKING - LINE 5" (WHITE, 30' SKIP, 10' DASH)
- ⑥ PR THERMOPLASTIC PAVEMENT MARKING - LINE 5" (WHITE, SOLID)
- ⑦ PR PLASTIC PAVEMENT MARKING, TYPE B - LINE 6" (WHITE, SOLID)
- ⑧ PR PREFORMED PLASTIC PAVEMENT MARKING, TYPE B - LINE 8" (WHITE, SOLID)
- ⑨ PR PREFORMED PLASTIC PAVEMENT MARKING, TYPE B - LINE 12" (WHITE, SOLID)
- ⑩ PR PREFORMED PLASTIC PAVEMENT MARKING, TYPE B - LINE 12" (YELLOW, SOLID)
- ⑪ PR PREFORMED PLASTIC PAVEMENT MARKING, TYPE B - LINE 24" (WHITE, SOLID)
- ⑫ PR PREFORMED PLASTIC PAVEMENT MARKING, TYPE B - LETTERS & SYMBOLS (WHITE)
- PR PREFORMED PLASTIC PAVEMENT MARKING, TYPE B - LETTERS & SYMBOLS (WHITE, LARGE ARROW)
- ▶ PR RAISED PAVEMENT MARKERS, ONE-WAY AMBER
- ▷ PR RAISED PAVEMENT MARKERS, ONE-WAY CRYSTAL
- ◆ PR RAISED PAVEMENT MARKERS, TWO-WAY AMBER



FILE NAME = C:\Projects\603480\shp\planb001.dgn	USER NAME = leughjnr1	DESIGNED -	REVISED -
		DRAWN -	REVISED -
		CHECKED -	REVISED -
		DATE -	REVISED -
PLOT SCALE = 40.0000" / IN.			
PLOT DATE = Jul-09-2008 12:00:10PM			

**STATE OF ILLINOIS
DEPARTMENT OF TRANSPORTATION**

PLAN VIEW			
SCALE:	SHEET NO.	OF	SHEETS
			STA. 134+00.00 TO STA. 140+00.00

F.A.P. RTE. 315	SECTION 23 RS-2	COUNTY HANCOCK	TOTAL SHEETS 15	SHEET NO. 14
FED. ROAD DIST. NO. [ILLINOIS] FED. AID PROJECT				
CONTRACT NO. 72C31				