

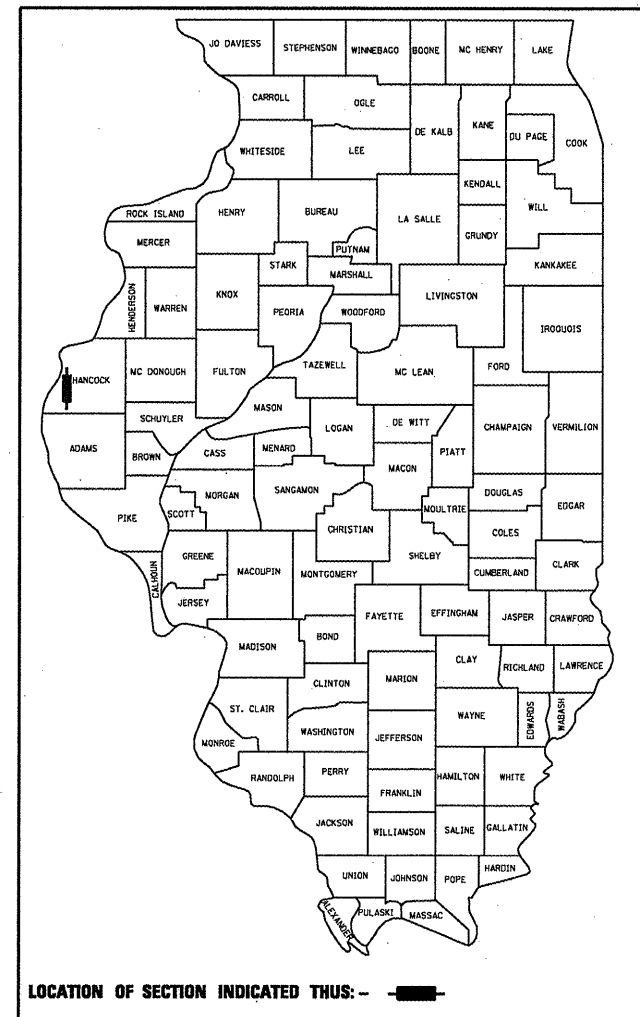
STATE OF ILLINOIS
DEPARTMENT OF TRANSPORTATION
DIVISION OF HIGHWAYS
PROPOSED
HIGHWAY PLANS

FAP ROUTE 315 (US 136)
SECTION 23RS-2

HANCOCK COUNTY
C-96-005-09

F.A.P. RTE.	SECTION	COUNTY	TOTAL SHEETS	SHEET NO.
315	23RS-2	HANCOCK	15	1
FED. ROAD DIST. NO.	ILLINOIS	CONTRACT NO. 72C31		

★ 15+2 = 17
 D-96-034-08



INDEX OF SHEETS

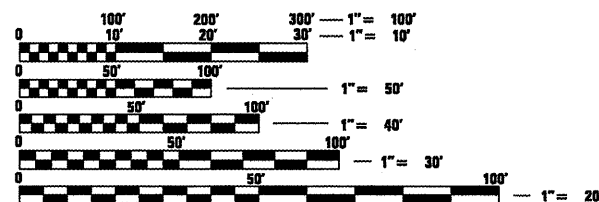
- 1 COVER SHEET
- 2 GENERAL NOTES AND HIGHWAY STANDARDS
- 3-4 SUMMARY OF QUANTITIES
- 5-6 SCHEDULE OF QUANTITIES
- 7-8 TYPICAL SECTIONS
- 9-15 PLAN VIEW

15A, 15B EXPANSION JOINT DETAILS

BEGIN IMPROVEMENT
STA 97+13

END IMPROVEMENT
STA 137+50

BRIDGE OMISSION
STA 116+37 TO STA 118+47

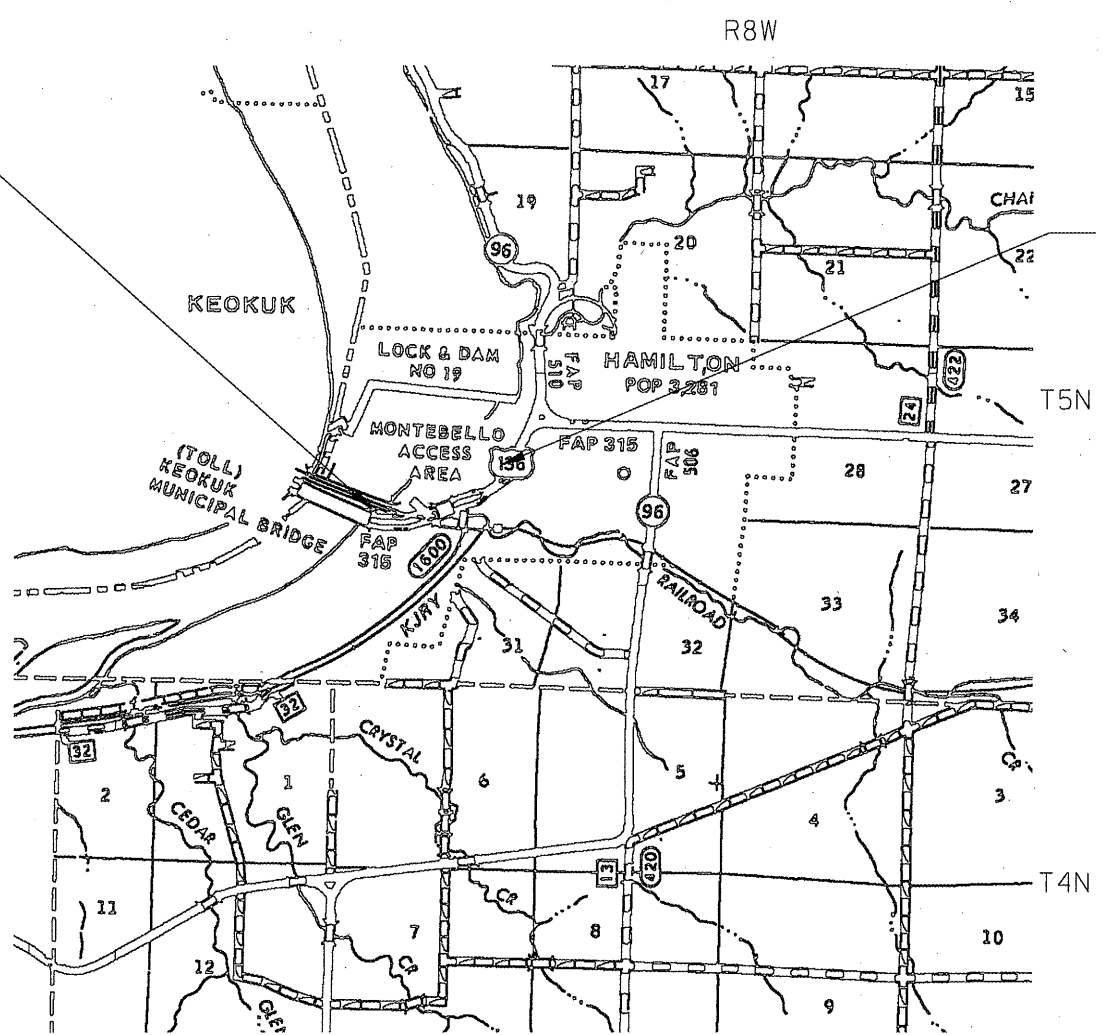


FULL SIZE PLANS HAVE BEEN PREPARED USING STANDARD ENGINEERING SCALES. REDUCED SIZED PLANS WILL NOT CONFORM TO STANDARD SCALES. IN MAKING MEASUREMENTS ON REDUCED PLANS, THE ABOVE SCALES MAY BE USED.

J.U.L.I.E.
 JOINT UTILITY LOCATION INFORMATION FOR EXCAVATION
 1-800-892-0123
 OR 811

PROJECT ENGINEER: JOHN NEGANGARD (217) 782-6990
SQUAD LEADER: VINCE MADONIA (217) 785-9046

CONTRACT NO. 72C31



PROJECT LENGTH = 4037 FT. = 0.76 MILE



AADT = 12,800 (2005)
MU = 350
SU = 600

STATE OF ILLINOIS
 DEPARTMENT OF TRANSPORTATION
 DIVISION OF HIGHWAYS

SUBMITTED July 13, 2008

Res. J. Duckert
 DEPUTY DIRECTOR OF HIGHWAYS, REGION ENGINEER

June 27, 2008
Eric E. Horn
 ENGINEER OF DESIGN AND ENVIRONMENT

June 27, 2008
Christine M. Reed
 DIRECTOR OF HIGHWAYS, CHIEF ENGINEER

PRINTED BY THE AUTHORITY
OF THE STATE OF ILLINOIS

Rev. 7-16-08

GENERAL NOTES:

1. NO EXCAVATION ANTICIPATED ON THIS PROJECT WHICH WOULD AFFECT UTILITIES. SHOULD ANY EXCAVATION DEVIATING FROM THAT ANTICIPATED BE REQUIRED, J. U. L. I. E. WILL BE NOTIFIED A MINIMUM OF 48 HOURS IN ADVANCE - (800) 892-0123.
2. THE FOLLOWING APPLICATION RATES WERE USED FOR QUANTITY CALCULATIONS:
 LEVELING BINDER 0.056 T / SY*IN
 BIT. CONC. SURF. CSE. 0.056 T / SY*IN
 PRIME COAT (BIT) .00038 T / SY
 PRIME COAT (AGG) .002 T / SY
3. THE THICKNESS OF BITUMINOUS MIXTURES SHOWN ON THE PLANS IS THE NOMINAL THICKNESS. DEVIATIONS FROM THE NOMINAL THICKNESS WILL BE PERMITTED WHEN SUCH DEVIATIONS OCCUR DUE TO IRREGULARITIES IN THE EXISTING SURFACE OR BASE ON WHICH THE BITUMINOUS MIXTURE IS PLACED.
4. ALL ELEVATIONS SHOWN IN THE PLANS ARE U. S. G. S. MEAN SEA LEVEL DATUM.
5. ANY REFERENCE TO THE STANDARDS THROUGHOUT THE PLANS SHALL BE INTERPRETED TO BE THE LATEST STANDARDS OF THE DEPARTMENT AS INCLUDED IN THE PLANS.
6. THE CONTRACTOR WILL BE RESPONSIBLE FOR THE TRAFFIC CONTROL DEVICES AT ALL TIMES DURING CONSTRUCTION ACTIVITIES AND SHALL COORDINATE THE ITEMS OF WORK IN ORDER TO KEEP HAZARD TRAFFIC INCONVENIENCES TO A MINIMUM
7. ALL PAVEMENT MARKINGS SHALL BE VERIFIED BY RESIDENT/FIELD ENGINEER PRIOR TO THEIR PLACEMENT.

STANDARDS

- 701001-01
- 701006-02
- 701011-01
- 701101-01
- 701106-01
- 701301-02
- 701311-02
- 701426-02
- 701501-04
- 701601-05
- 701701-05
- 780001-01
- 781001-02
- 000001-05
- 001006

THE FOLLOWING MIXTURE REQUIREMENTS ARE APPLICABLE TO THIS PROJECT:

MIXTURE USES:	HMA Surface US 136	HMA US 136
AC/PG:	SBS PG 70-22	PG 58-22
DESIGN AIR VOIDS:	4.0% @ N Design = 70	2.0% @ N Design = 30
MIXTURE COMPOSITION: (GRADATION MIXTURE)	IL 9.5 OR IL 12.5	BAM
FRICITION AGGREGATE:	Mix *D*	N/A

DISTRICT SIX	
EXAMINED <u>July 8</u>	20 <u>08</u>
<i>[Signature]</i>	
OPERATIONS ENGINEER	
EXAMINED <u>July 8</u>	20 <u>08</u>
<i>[Signature]</i>	
PROGRAM IMPLEMENTATION ENGINEER	
EXAMINED <u>July 8</u>	20 <u>08</u>
<i>[Signature]</i>	
PROGRAM DEVELOPMENT ENGINEER	

PAY CODE	ITEM DESCRIPTION	UNIT	1000	TOTAL
			100% State	
PAY CODE	ITEM DESCRIPTION	UNIT	TOTAL	TOTAL
40600200	BITUMINOUS MATERIALS (PRIME COAT)	TON	10.8	10.8
40600300	AGGREGATE (PRIME COAT)	TON	42.9	42.9
40600895	CONSTRUCTING TEST STRIP	EACH	1.0	1.0
40600982	HOT-MIX ASPHALT SURFACE REMOVAL - BUTT JOINT	SQ YD	250.0	250.0
40600990	TEMPORARY RAMP	SQ YD	83.3	83.3
40603540	POLYMERIZED HOT-MIX ASPHALT SURFACE COURSE, MIX "D", N70	TON	1,801.1	1,801.1
44000155	HOT-MIX ASPHALT SURFACE REMOVAL, 1 1/2"	SQ YD	28,096.9	28,096.9
48203100	HOT-MIX ASPHALT SHOULDERS	TON	580.0	580.0
52000320	NEOPRENE EXPANSION JOINT 2"	FOOT	242.0	242.0
67100100	MOBILIZATION	L SUM	1.0	1.0
70102620	TRAFFIC CONTROL AND PROTECTION, STANDARD 701501	L SUM	1.0	1.0
70102630	TRAFFIC CONTROL AND PROTECTION, STANDARD 701601	L SUM	1.0	1.0
70102635	TRAFFIC CONTROL AND PROTECTION, STANDARD 701701	L SUM	1.0	1.0
70300100	SHORT-TERM PAVEMENT MARKING	FOOT	1,400.0	1,400.0
70300210	TEMPORARY PAVEMENT MARKING - LETTERS AND SYMBOLS	SQ FT	250.0	250.0
70300230	TEMPORARY PAVEMENT MARKING - LINE 5"	FOOT	17,746.0	17,746.0



Rev. 7-16-08

FILE NAME = C:\Projects\603406\shstsoq.dgn

USER NAME = laughlinr1	DESIGNED -	REVISED -
PLOT SCALE = 100.0000' / IN.	DRAWN -	REVISED -
PLOT DATE = Jul-09-2008 11:59:45AM	CHECKED -	REVISED -
	DATE -	REVISED -

**STATE OF ILLINOIS
DEPARTMENT OF TRANSPORTATION**

SUMMARY OF QUANTITIES

SCALE: SHEET NO. 3 OF 15 SHEETS STA. TO STA.

F.A.P. RTE.	SECTION	COUNTY	TOTAL SHEETS	SHEET NO.
315	23 RS-2	HANCOCK	15	3
FED. ROAD DIST. NO. ILLINOIS FED. AID PROJECT			CONTRACT NO. 72C31	

			1000	
			100% State	
PAY CODE	ITEM DESCRIPTION	UNIT	TOTAL	TOTAL
70300240	TEMPORARY PAVEMENT MARKING - LINE 6"	FOOT	687.0	687.0
70300250	TEMPORARY PAVEMENT MARKING - LINE 8"	FOOT	502.0	502.0
70300260	TEMPORARY PAVEMENT MARKING - LINE 12"	FOOT	580.0	580.0
70300280	TEMPORARY PAVEMENT MARKING - LINE 24"	FOOT	222.0	222.0
70301000	WORK ZONE PAVEMENT MARKING REMOVAL	SQ FT	56.0	56.0
* 78000300	THERMOPLASTIC PAVEMENT MARKING - LINE 5"	FOOT	16,297.0	16,297.0
* 78000400	THERMOPLASTIC PAVEMENT MARKING - LINE 6"	FOOT	426.0	426.0
* 78004200	PREFORMED PLASTIC PAVEMENT MARKING, TYPE B - INLAID - LETTERS AND SYMBOLS	SQ FT	400.8	400.8
* 78004220	PREFORMED PLASTIC PAVEMENT MARKING, TYPE B - INLAID - LINE 5"	FOOT	1,449.0	1,449.0
* 78004230	PREFORMED PLASTIC PAVEMENT MARKING, TYPE B - INLAID - LINE 6"	FOOT	261.0	261.0
* 78004240	PREFORMED PLASTIC PAVEMENT MARKING, TYPE B - INLAID - LINE 8"	FOOT	502.0	502.0
* 78004250	PREFORMED PLASTIC PAVEMENT MARKING, TYPE B - INLAID - LINE 12"	FOOT	784.0	784.0
* 78004280	PREFORMED PLASTIC PAVEMENT MARKING, TYPE B - INLAID - LINE 24"	FOOT	222.0	222.0
* 78100100	RAISED REFLECTOR PAVEMENT MARKER	EACH	136.0	136.0
78300200	RAISED REFLECTOR PAVEMENT MARKER REMOVAL	EACH	100.0	100.0
Z0048665	RAILROAD PROTECTIVE LIABILITY INSURANCE	L SUM	1.0	1.0

* SPECIALTY
ITEM

FILE NAME = C:\Projects\683408\ahssoq.dgn

USER NAME = leughlrrr1

DESIGNED -

REVISED -

DRAWN -

REVISED -

PLOT SCALE = 100.0000' / IN.

CHECKED -

REVISED -

PLOT DATE = Jul-09-2008 11:59:47AM

DATE -

REVISED -

STATE OF ILLINOIS
DEPARTMENT OF TRANSPORTATION

SUMMARY OF QUANTITIES

SCALE: SHEET NO. 4 OF 15 SHEETS STA. TO STA.

F.A.P. RTE.	SECTION	COUNTY	TOTAL SHEETS	SHEET NO.
315	23 RS-2	HANCOCK	15	4
FED. ROAD DIST. NO. [ILLINOIS] FED. AID PROJECT			CONTRACT NO. 72C31	

PAVING SCHEDULE

Sta	Sta	Length ft	Pav w ft	Pav A SY	Pav T in	Shld W ft	Shld A SY	Shld T in	HMA Surf T	HMA ShldPrime T	(BitPrim (agg) T	HMA Rem SY	
97+13	110+78	1365	54	8190	1.5	16	2427	1.5	688.0	203.8	4.03	10,617	
111+05	115+90	485	54	2910	1.5	16	862	1.5	244.4	72.4	1.43	3,772	
118+94	122+00	306	54	1836	1.5	16	544	1.5	154.2	45.7	0.90	2,380	
122+00	128+00	600	CAD	4634	1.5	CAD	1242	1.5	389.3	104.3	2.23	5,876	
128+00	134+00	600	CAD	2892	1.5	CAD	1472	1.5	242.9	123.6	1.66	4,364	
134+00	137+50	350	CAD	980	1.5	CAD	358	1.5	82.3	30.1	0.51	1,338	
7+44	8+00	56	CAD	301	1.5	CAD	0	1.5	25.3	0.0	0.11	301	
									1,801.1	580.0	10.8	42.9	28,346.9

FILE NAME = C:\Projects\603400\shsch.dgn	USER NAME = leughlrr1	DESIGNED -	REVISED -	STATE OF ILLINOIS DEPARTMENT OF TRANSPORTATION	SCHEDULE OF QUANTITIES				F.A.P. RTE.	SECTION	COUNTY	TOTAL SHEETS	SHEET NO.
		DRAWN -	REVISED -		SCALE:	SHEET NO. 5 OF 15 SHEETS	STA.	TO STA.	315	23 RS-2	HANCOCK	15	5
		CHECKED -	REVISED -		CONTRACT NO. 72B74								
		DATE -	REVISED -		FED. ROAD DIST. NO. ILLINOIS FED. AID PROJECT								

STATION	TO	STATION	PREFORMED PLASTIC PAVEMENT MARKING, TYB - LINE 5"	THERMOPLASTIC PAVEMENT MARKING - LINE 5"	THERMOPLASTIC PAVEMENT MARKING - LINE 6"	PREFORMED PLASTIC PAVEMENT MARKING, TYB - LINE 6"	PREFORMED PLASTIC PAVEMENT MARKING, TYB - LINE 8"	PREFORMED PLASTIC PAVEMENT MARKING, TYB - LINE 12"	PREFORMED PLASTIC PAVEMENT MARKING, TYB - LINE 24"	PREFORMED PLASTIC PAVEMENT MARKING, TYB - LETTERS & SYMBOLS (SQ YDS)
97+13	(10' skip)	115+90	920.0							
118+95	(White)	137+50	310.0							
97+13	(Yellow)	137+50		8,211.0						
97+13		110+22		2,618.0						
111+10		111+58		98.0						
112+22		125+00		2,556.0						
125+91		137+50		2,318.0						
7+44	(2' skip)	9+22		356.0						
120+30.92		122+31.21	50.0							
128+47.90		130+36.00	47.0							
131+00.04		135+00.00	100.0							
7+45	(10' skip)	8+33	22.0							
115+90	(White)	118+95		140.0						
122+31.21		124+17.55			186.0					
126+08.04	(White)	128+47.90			240.0					
8+33		8+77.88				45.0				
Crosswalk	(White)					216.0				
124+17.55		125+14.12				97.0				
124+17.55		8+82.66				82.0				
125+14.12	(White)	8+82.66				69.0				
125+45.29		126+00.61				55.0				
125+49.29		8+77.88				85.0				
126+00.61	(White)	8+77.88				114.0				
120+30		Diagonals								
124+17		124+50				62.0				
125+45		125+14				114.0				
126+00	(Yellow)	126+00				55.0				
		134+54				385.0				
7+44		9+21				61.0				
130+87	(White)	134+50				107.0				
107+06		RR						24.0		
107+54		RR						24.0		
110+54		RR STOP BAR						24.0		
111+19		RR STOP BAR						24.0		
114+20		RR						24.0		
114+68		RR						24.0		
124+88		STOP BAR						12.0		
126+07		STOP BAR						36.0		
9+20		LT STOP BAR						12.0		
9+00	(White)	RT STOP BAR						18.0		
107+27		Symbols								122.4
114+45	(White)	RR								122.4
PER PLANS		ARROWS								156.0
TOTALS =			1,449.0	16,297.0	426.0	261.0	502.0	784.0	222.0	400.8

RAISED REFLECTIVE PAVEMENT MARKERS (ONE WAY AMBER)	RAISED REFLECTIVE PAVEMENT MARKERS (ONE WAY CRYSTAL)	RAISED REFLECTIVE PAVEMENT MARKERS (TWO WAY AMBER)
18	112	6

FILE NAME = C:\Projects\6603488\ahsch.dgn

USER NAME = leughlin
 PLOT SCALE = 100.0000' / IN.
 PLOT DATE = Jul-09-2008 11:59:51AM

DESIGNED -
 DRAWN -
 CHECKED -
 DATE -

REVISED -
 REVISED -
 REVISED -
 REVISED -

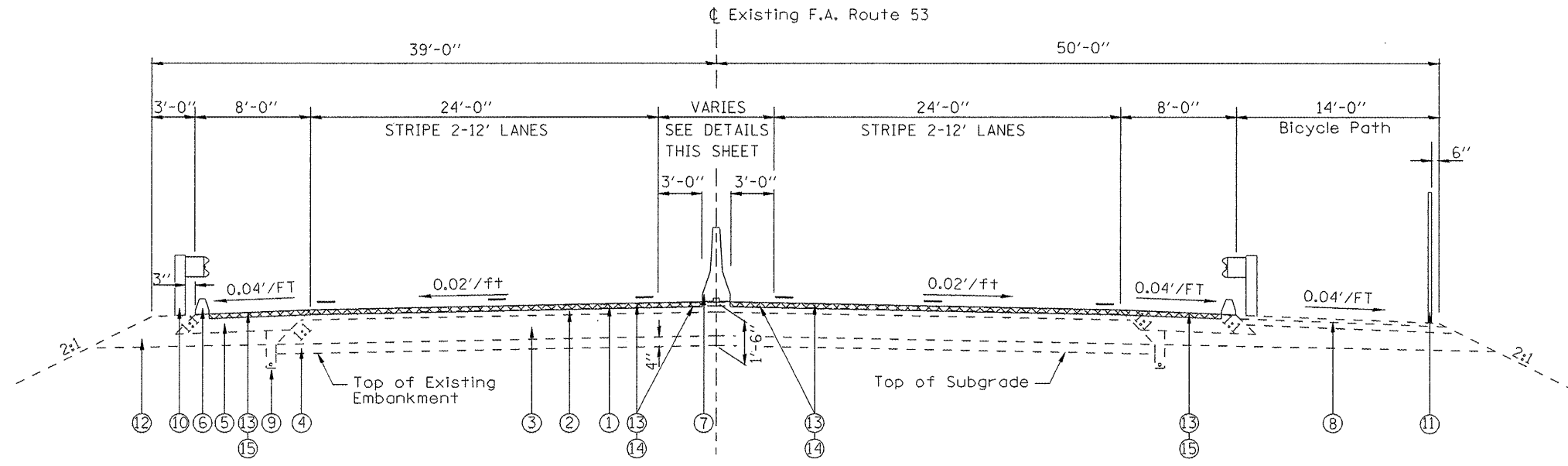
STATE OF ILLINOIS
 DEPARTMENT OF TRANSPORTATION

SCHEDULE OF QUANTITIES

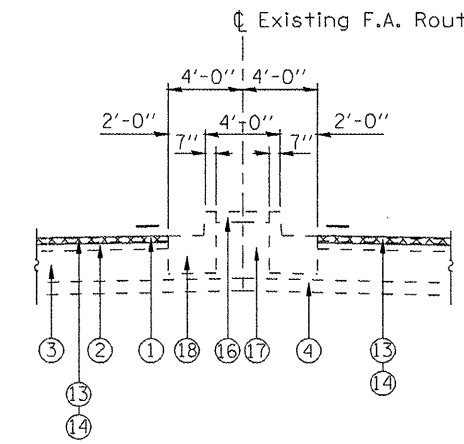
SCALE: SHEET NO. 6 OF 15 SHEETS STA. TO STA.

F.A.P. RTE.	SECTION	COUNTY	TOTAL SHEETS	SHEET NO.
315	23 RS-2	HANCOCK	15	6

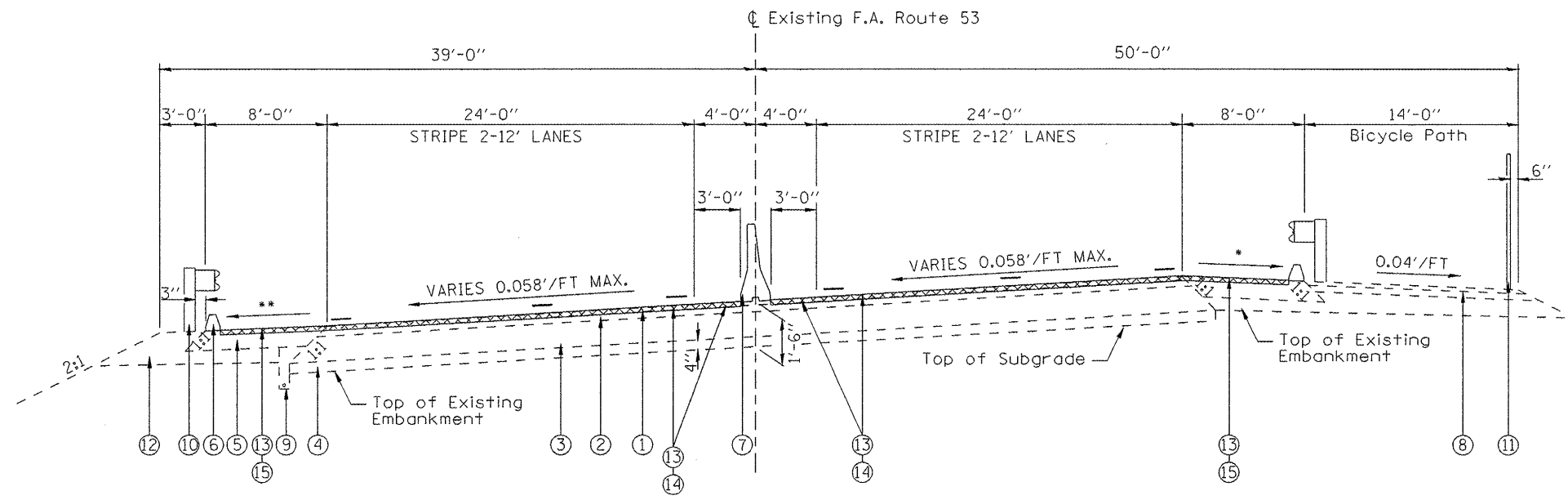
FED. ROAD DIST. NO. ILLINOIS FED. AID PROJECT CONTRACT NO. 72B74



FAP 315 (US 136)
 STA 97+13 TO 101+25
 STA 110+35 TO STA 115+95.88



FAP 315 (US 136)
 STA 111+16 TO STA 111+58.43
 STA 112+29.57 TO STA 115+95.88



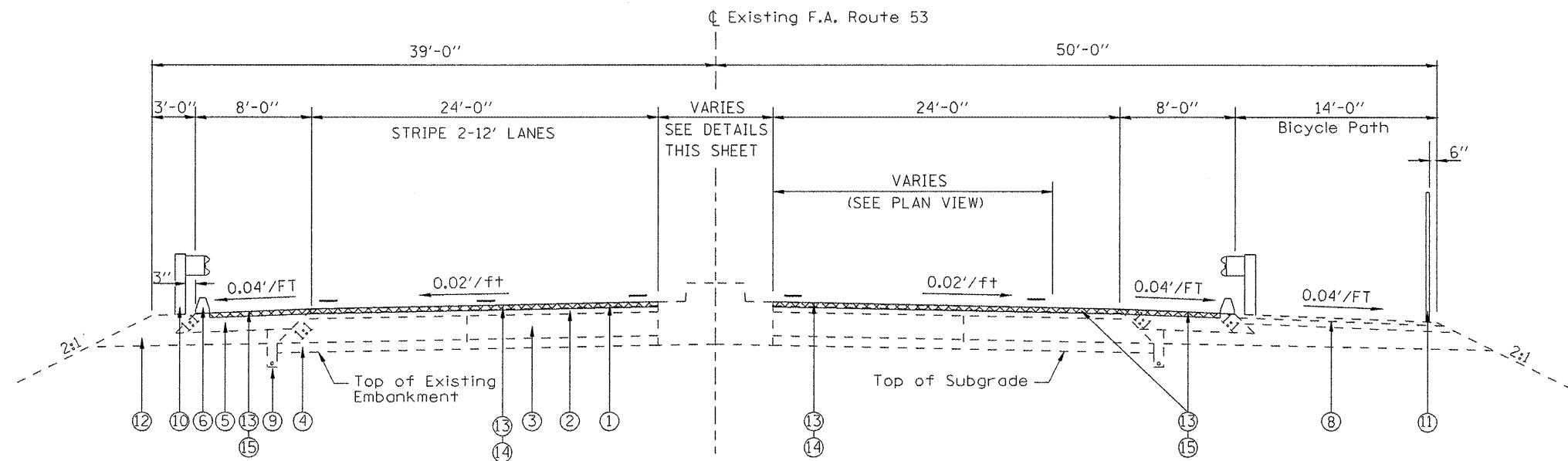
FAP 315 (US 136)
 STA 101+25 TO STA 110+35

• 8% MAX BREAKOVER
 •• SAME AS SE, BUT NOT LESS THAN 4.0%

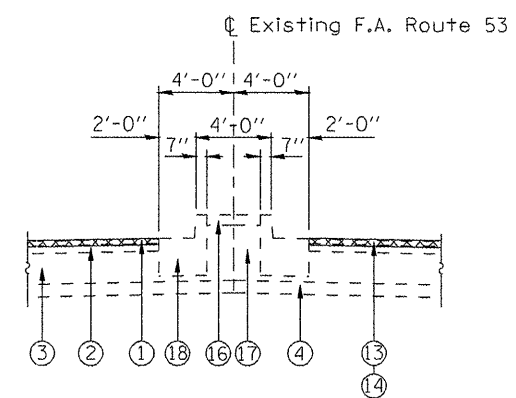
LEGEND

- ① EXISTING 1 1/2" BITUMINOUS CONCRETE SURFACE COURSE, MIXTURE D, CLASS I
- ② EXISTING 2 1/2" BITUMINOUS CONCRETE BINDER COURSE
- ③ EXISTING 10" BITUMINOUS BASE COURSE
- ④ EXISTING 4" SUB BASE GRANULAR MATERIAL, TYPE A
- ⑤ EXISTING 8" BITUMINOUS SHOULDER
- ⑥ BITUMINOUS CONCRETE CURB
- ⑦ EXISTING CONCRETE BARRIER, DOUBLE FACE
- ⑧ EXISTING 4" BITUMINOUS CONCRETE SURFACE COURSE, MIXTURE C, CLASS I
- ⑨ EXISTING PIPE UNDERDRAIN, 4"
- ⑩ EXISTING STEEL PLATE BEAM GUARDRAIL, TYPE A
- ⑪ EXISTING 4'-6" CHAIN LINK FENCE
- ⑫ EXISTING BACKFILL
- ⑬ PROPOSED BITUMINOUS SURFACE REMOVAL 1 1/2"
- ⑭ PROPOSED BITUMINOUS SURFACE 1 1/2"
- ⑮ PROPOSED BITUMINOUS SHOULDER 1 1/2"
- ⑯ EXISTING CONCRETE MEDIAN SURFACE 4" (TYPE P)
- ⑰ EXISTING SANDFILL
- ⑱ EXISTING COMBINATION CONCRETE CURB AND GUTTER, TYPE B-9.24
- ⑲ EXISTING LEVELING BINDER

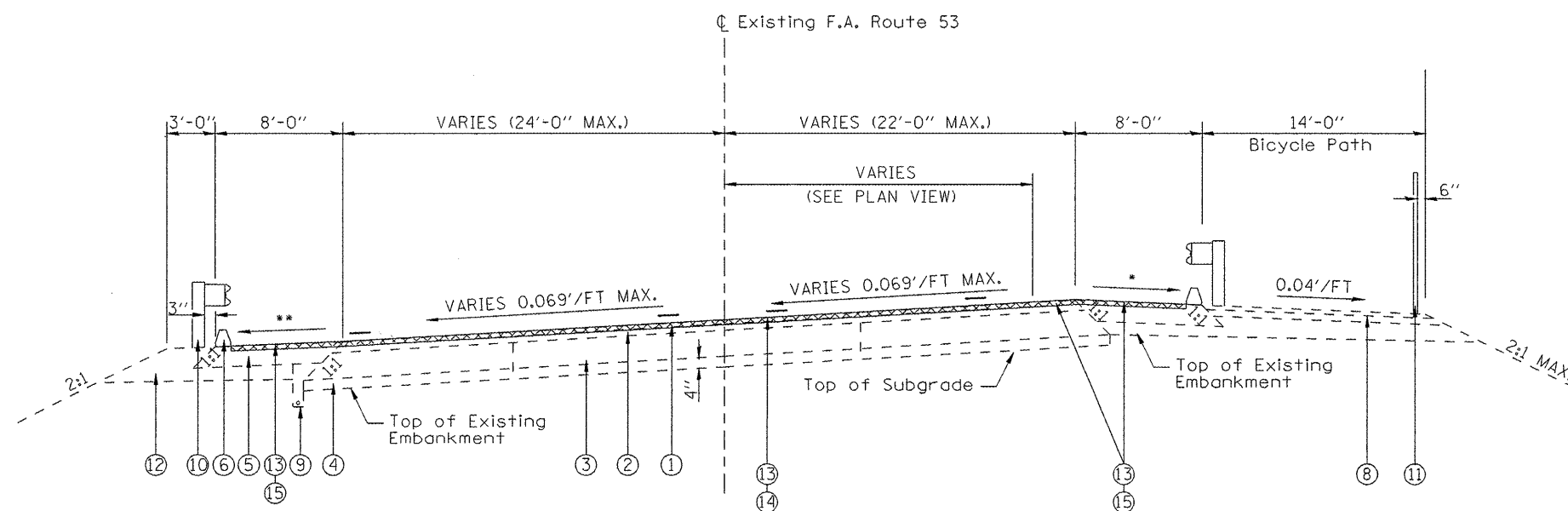
FILE NAME = C:\Projects\d603408\shittyproj.dgn	USER NAME = laughlinr1	DESIGNED -	REVISED -	STATE OF ILLINOIS DEPARTMENT OF TRANSPORTATION	TYPICAL CROSS SECTION			F.A.P. RTE. 315	SECTION 23 RS-2	COUNTY HANCOCK	TOTAL SHEETS 15	SHEET NO. 7
	PLOT SCALE = 10.0000' / IN.	DRAWN -	REVISED -					SCALE: SHEET NO. OF SHEETS STA. TO STA.			FED. ROAD DIST. NO. ILLINOIS FED. AID PROJECT	
PLOT DATE = Jul-09-2008 11:59:53AM	DATE -	CHECKED -	REVISED -									



FAP 315 (US 136)
STA 118+88.08 TO 130+80



FAP 315 (US 136)
STA 111+16 TO STA 111+58.43
STA 112+29.57 TO STA 115+95.88



FAP 315 (US 136)
STA 130+80 TO STA 135+60

* 8% MAX BREAKOVER
** SAME AS SE, BUT NOT LESS THAN 4.0%

LEGEND

- ① EXISTING 1 1/2" BITUMINOUS CONCRETE SURFACE COURSE, MIXTURE D, CLASS I
- ② EXISTING 2 1/2" BITUMINOUS CONCRETE BINDER COURSE
- ③ EXISTING 10" BITUMINOUS BASE COURSE
- ④ EXISTING 4" SUB BASE GRANULAR MATERIAL, TYPE A
- ⑤ EXISTING 8" BITUMINOUS SHOULDER
- ⑥ BITUMINOUS CONCRETE CURB
- ⑦ EXISTING CONCRETE BARRIER, DOUBLE FACE
- ⑧ EXISTING 4" BITUMINOUS CONCRETE SURFACE COURSE, MIXTURE C, CLASS I
- ⑨ EXISTING PIPE UNDERDRAIN, 4"
- ⑩ EXISTING STEEL PLATE BEAM GUARDRAIL, TYPE A
- ⑪ EXISTING 4'-6" CHAIN LINK FENCE
- ⑫ EXISTING BACKFILL
- ⑬ PROPOSED BITUMINOUS SURFACE REMOVAL 1 1/2"
- ⑭ PROPOSED BITUMINOUS SURFACE 1 1/2"
- ⑮ PROPOSED BITUMINOUS SHOULDER 1 1/2"
- ⑯ EXISTING CONCRETE MEDIAN SURFACE 4" (TYPE P)
- ⑰ EXISTING SANDFILL
- ⑱ EXISTING COMBINATION CONCRETE CURB AND GUTTER, TYPE B-9.24
- ⑲ EXISTING LEVELING BINDER

FILE NAME =
C:\Projects\d603408\shittypicals.dgn

USER NAME = laughlinr1
DESIGNED -
DRAWN -
PLOT SCALE = 10.0000' / IN.
PLOT DATE = Jul-09-2008 11:59:55AM

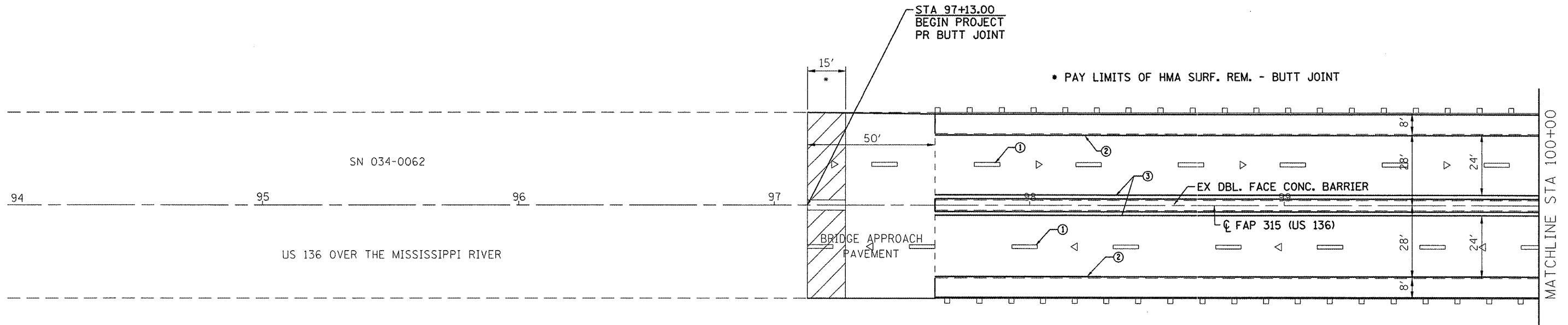
DESIGNED -
DRAWN -
CHECKED -
DATE -
REVISED -
REVISED -
REVISED -
REVISED -

STATE OF ILLINOIS
DEPARTMENT OF TRANSPORTATION

TYPICAL CROSS SECTION

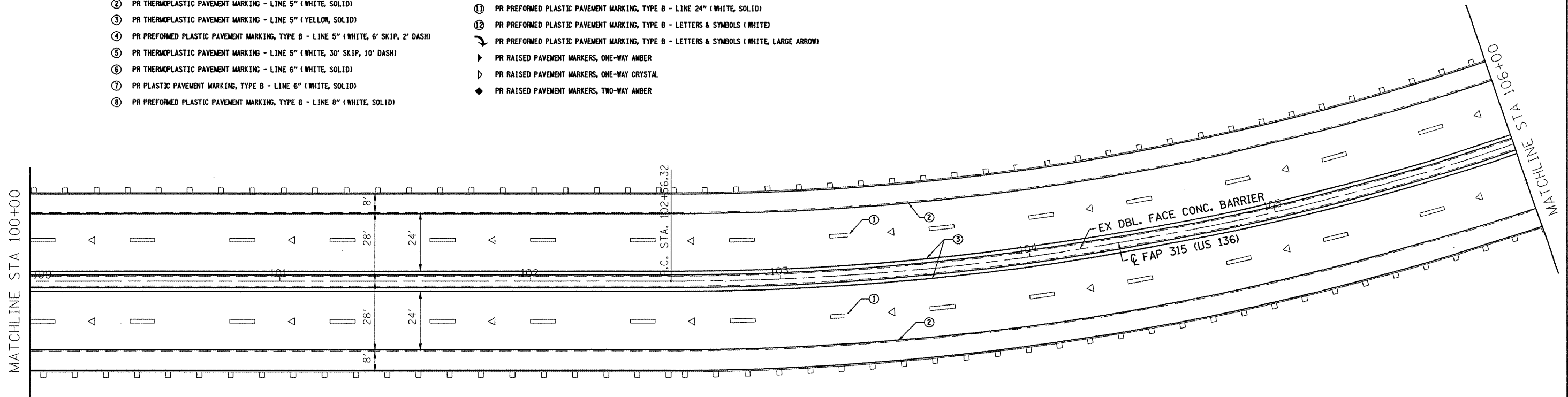
SCALE: SHEET NO. OF SHEETS STA. TO STA.

F.A.P. RTE.	SECTION	COUNTY	TOTAL SHEETS	SHEET NO.
315	23 RS-2	HANCOCK	15	8
CONTRACT NO. 72C31				
FED. ROAD DIST. NO. ILLINOIS FED. AID PROJECT				



PAVEMENT MARKING LEGEND

- ① PR PREFORMED PLASTIC PAVEMENT MARKING, TYPE B - LINE 5" (WHITE, 30' SKIP, 10' DASH)
- ② PR THERMOPLASTIC PAVEMENT MARKING - LINE 5" (WHITE, SOLID)
- ③ PR THERMOPLASTIC PAVEMENT MARKING - LINE 5" (YELLOW, SOLID)
- ④ PR PREFORMED PLASTIC PAVEMENT MARKING, TYPE B - LINE 5" (WHITE, 6' SKIP, 2' DASH)
- ⑤ PR THERMOPLASTIC PAVEMENT MARKING - LINE 5" (WHITE, 30' SKIP, 10' DASH)
- ⑥ PR THERMOPLASTIC PAVEMENT MARKING - LINE 6" (WHITE, SOLID)
- ⑦ PR PLASTIC PAVEMENT MARKING, TYPE B - LINE 6" (WHITE, SOLID)
- ⑧ PR PREFORMED PLASTIC PAVEMENT MARKING, TYPE B - LINE 8" (WHITE, SOLID)
- ⑨ PR PREFORMED PLASTIC PAVEMENT MARKING, TYPE B - LINE 12" (WHITE, SOLID)
- ⑩ PR PREFORMED PLASTIC PAVEMENT MARKING, TYPE B - LINE 12" (YELLOW, SOLID)
- ⑪ PR PREFORMED PLASTIC PAVEMENT MARKING, TYPE B - LINE 24" (WHITE, SOLID)
- ⑫ PR PREFORMED PLASTIC PAVEMENT MARKING, TYPE B - LETTERS & SYMBOLS (WHITE)
- PR PREFORMED PLASTIC PAVEMENT MARKING, TYPE B - LETTERS & SYMBOLS (WHITE, LARGE ARROW)
- ▶ PR RAISED PAVEMENT MARKERS, ONE-WAY AMBER
- ▷ PR RAISED PAVEMENT MARKERS, ONE-WAY CRYSTAL
- ◆ PR RAISED PAVEMENT MARKERS, TWO-WAY AMBER



FILE NAME = C:\Projects\603400\shiplen_94-117.dgn	USER NAME = laughlinr1	DESIGNED -	REVISED -
		DRAWN -	REVISED -
		CHECKED -	REVISED -
		DATE -	REVISED -

**STATE OF ILLINOIS
DEPARTMENT OF TRANSPORTATION**

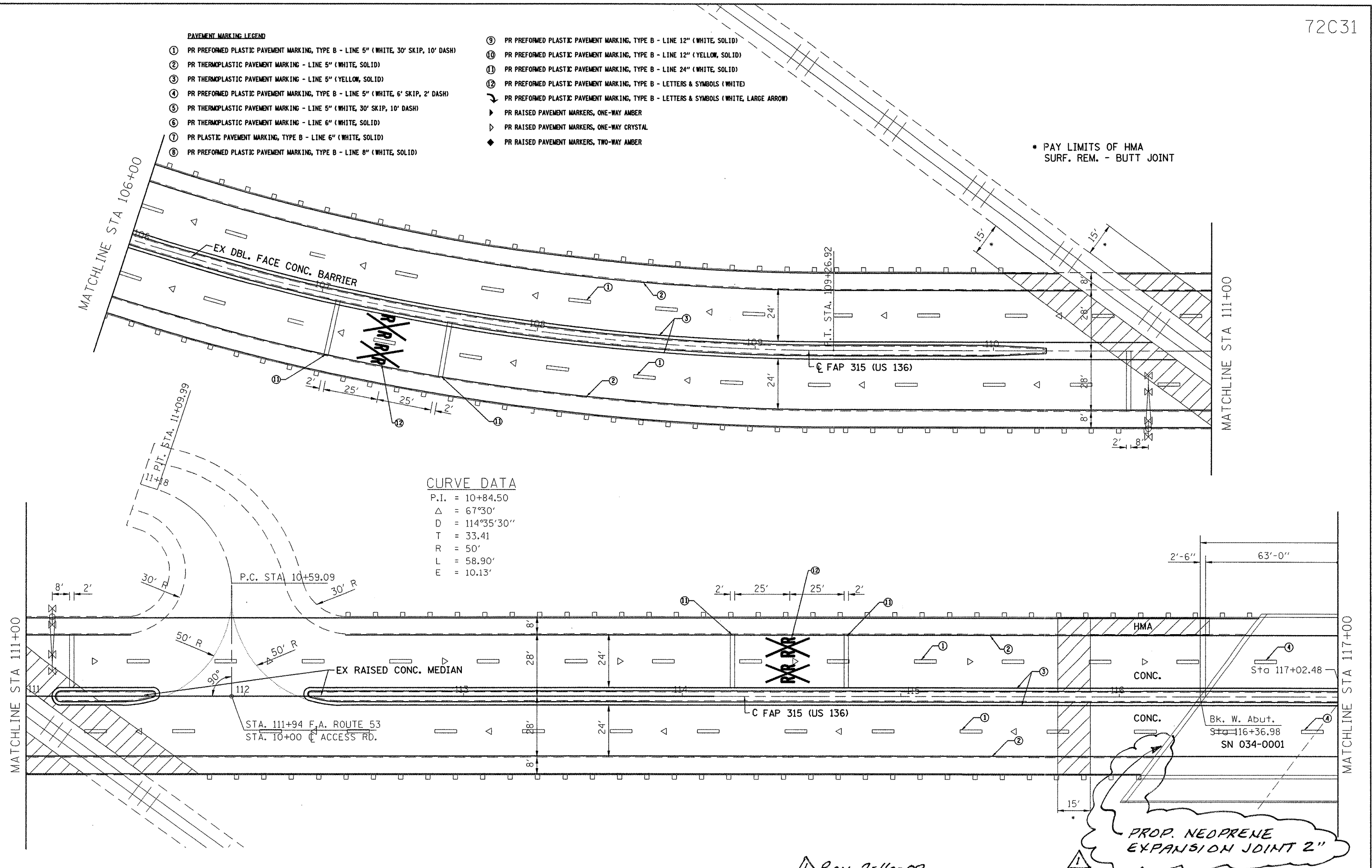
PLAN VIEW			
SCALE:	SHEET NO.	OF SHEETS	STA. TO STA.

F.A.P. RTE.	SECTION	COUNTY	TOTAL SHEETS	SHEET NO.
315	23 RS-2	HANCOCK	15	9
CONTRACT NO. 72C31				
FED. ROAD DIST. NO. ILLINOIS FED. AID PROJECT				

PAVEMENT MARKING LEGEND

- ① PR PREFORMED PLASTIC PAVEMENT MARKING, TYPE B - LINE 5" (WHITE, 30' SKIP, 10' DASH)
- ② PR THERMOPLASTIC PAVEMENT MARKING - LINE 5" (WHITE, SOLID)
- ③ PR THERMOPLASTIC PAVEMENT MARKING - LINE 5" (YELLOW, SOLID)
- ④ PR PREFORMED PLASTIC PAVEMENT MARKING, TYPE B - LINE 5" (WHITE, 6' SKIP, 2' DASH)
- ⑤ PR THERMOPLASTIC PAVEMENT MARKING - LINE 5" (WHITE, 30' SKIP, 10' DASH)
- ⑥ PR THERMOPLASTIC PAVEMENT MARKING - LINE 6" (WHITE, SOLID)
- ⑦ PR PLASTIC PAVEMENT MARKING, TYPE B - LINE 6" (WHITE, SOLID)
- ⑧ PR PREFORMED PLASTIC PAVEMENT MARKING, TYPE B - LINE 8" (WHITE, SOLID)
- ⑨ PR PREFORMED PLASTIC PAVEMENT MARKING, TYPE B - LINE 12" (WHITE, SOLID)
- ⑩ PR PREFORMED PLASTIC PAVEMENT MARKING, TYPE B - LINE 12" (YELLOW, SOLID)
- ⑪ PR PREFORMED PLASTIC PAVEMENT MARKING, TYPE B - LINE 24" (WHITE, SOLID)
- ⑫ PR PREFORMED PLASTIC PAVEMENT MARKING, TYPE B - LETTERS & SYMBOLS (WHITE)
- PR PREFORMED PLASTIC PAVEMENT MARKING, TYPE B - LETTERS & SYMBOLS (WHITE, LARGE ARROW)
- ▶ PR RAISED PAVEMENT MARKERS, ONE-WAY AMBER
- ▷ PR RAISED PAVEMENT MARKERS, ONE-WAY CRYSTAL
- ◆ PR RAISED PAVEMENT MARKERS, TWO-WAY AMBER

* PAY LIMITS OF HMA SURF. REM. - BUTT JOINT



CURVE DATA

P.I. = 10+84.50
 Δ = 67°30'
 D = 114°35'30"
 T = 33.41
 R = 50'
 L = 58.90'
 E = 10.13'

PROP. NEOPRENE EXPANSION JOINT 2"

Rev. 7-16-08

FILE NAME =
 C:\Projects\6603408\shiplan_94-117.dgn

USER NAME = laughlinr1
 PLOT SCALE = 40.0000' / IN.
 PLOT DATE = Jul-09-2008 11:59:59AM

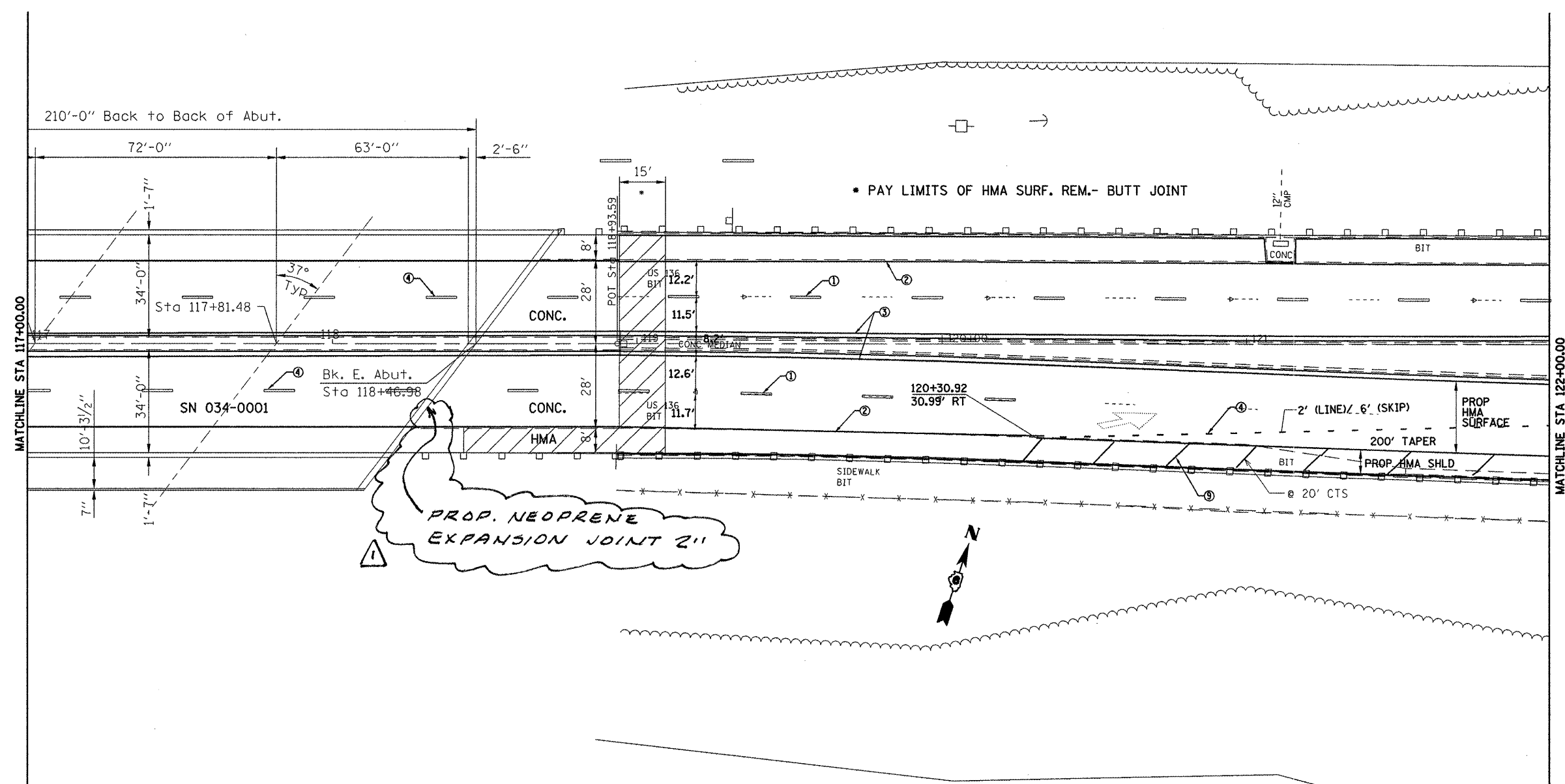
DESIGNED -	REVISED -
DRAWN -	REVISED -
CHECKED -	REVISED -
DATE -	REVISED -

**STATE OF ILLINOIS
 DEPARTMENT OF TRANSPORTATION**

PLAN VIEW

SCALE:	SHEET NO.	OF	SHEETS	STA.	TO STA.
--------	-----------	----	--------	------	---------

F.A.P. RTE.	SECTION	COUNTY	TOTAL SHEETS	SHEET NO.
315	23 RS-2	HANCOCK	15	10
CONTRACT NO. 72C31				
FED. ROAD DIST. NO. ILLINOIS FED. AID PROJECT				



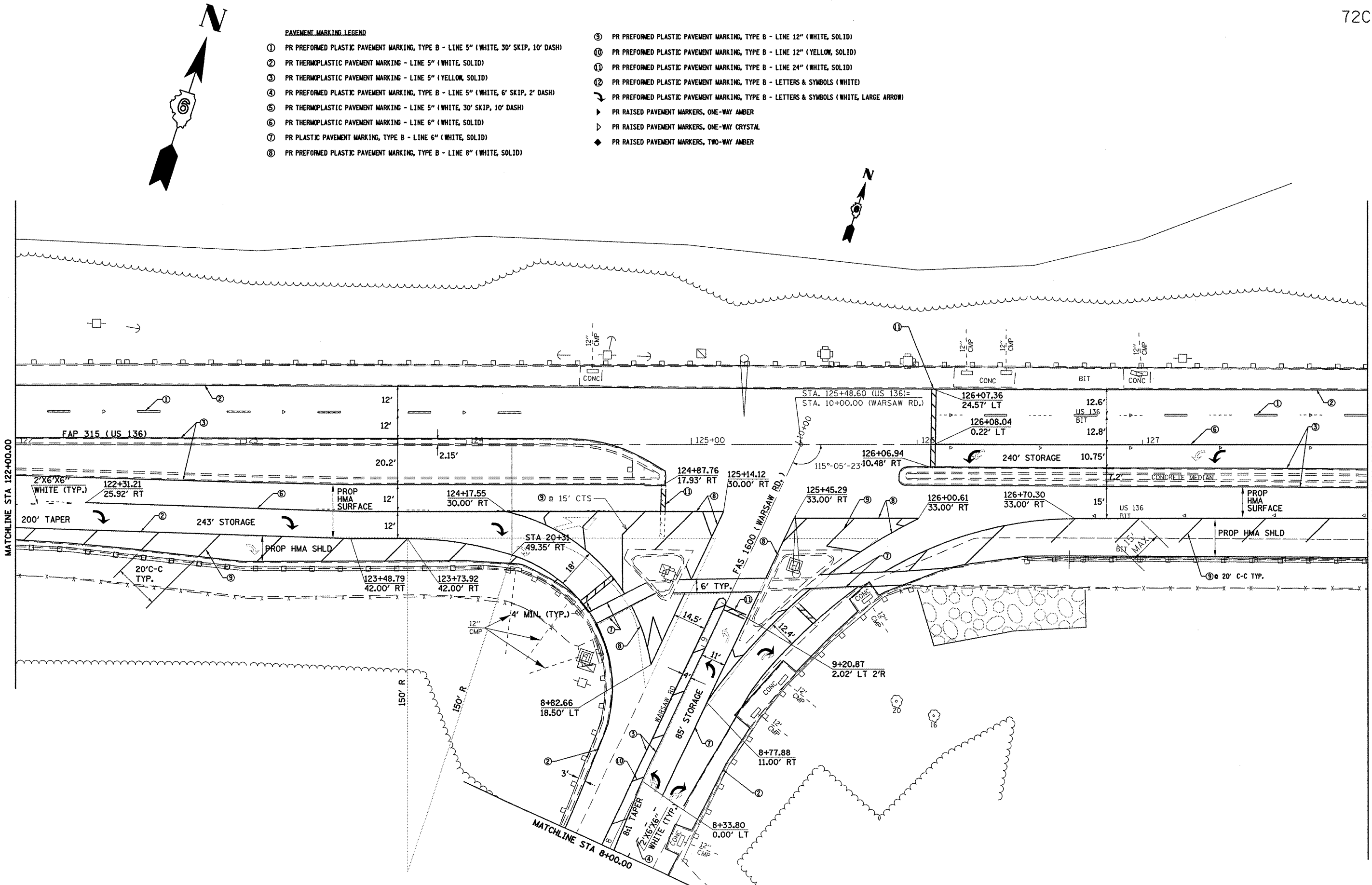
- PAVEMENT MARKING LEGEND**
- ① PR PREFORMED PLASTIC PAVEMENT MARKING, TYPE B - LINE 5" (WHITE, 30' SKIP, 10' DASH)
 - ② PR THERMOPLASTIC PAVEMENT MARKING - LINE 5" (WHITE, SOLID)
 - ③ PR THERMOPLASTIC PAVEMENT MARKING - LINE 5" (YELLOW, SOLID)
 - ④ PR PREFORMED PLASTIC PAVEMENT MARKING, TYPE B - LINE 5" (WHITE, 6' SKIP, 2' DASH)
 - ⑤ PR THERMOPLASTIC PAVEMENT MARKING - LINE 5" (WHITE, 30' SKIP, 10' DASH)
 - ⑥ PR THERMOPLASTIC PAVEMENT MARKING - LINE 6" (WHITE, SOLID)
 - ⑦ PR PLASTIC PAVEMENT MARKING, TYPE B - LINE 6" (WHITE, SOLID)
 - ⑧ PR PREFORMED PLASTIC PAVEMENT MARKING, TYPE B - LINE 8" (WHITE, SOLID)
 - ⑨ PR PREFORMED PLASTIC PAVEMENT MARKING, TYPE B - LINE 12" (WHITE, SOLID)
 - ⑩ PR PREFORMED PLASTIC PAVEMENT MARKING, TYPE B - LINE 12" (YELLOW, SOLID)
 - ⑪ PR PREFORMED PLASTIC PAVEMENT MARKING, TYPE B - LINE 24" (WHITE, SOLID)
 - ⑫ PR PREFORMED PLASTIC PAVEMENT MARKING, TYPE B - LETTERS & SYMBOLS (WHITE)
 - PR PREFORMED PLASTIC PAVEMENT MARKING, TYPE B - LETTERS & SYMBOLS (WHITE, LARGE ARROW)
 - ▶ PR RAISED PAVEMENT MARKERS, ONE-WAY AMBER
 - ▷ PR RAISED PAVEMENT MARKERS, ONE-WAY CRYSTAL
 - ◆ PR RAISED PAVEMENT MARKERS, TWO-WAY AMBER

△ Rev. 7-16-08

FILE NAME = C:\Projects\683408\shiplenb001.dgn	USER NAME = laughlrrml	DESIGNED -	REVISED -	STATE OF ILLINOIS DEPARTMENT OF TRANSPORTATION	PLAN VIEW	F.A.P. RTE. 315	SECTION 23 RS-2	COUNTY HANCOCK	TOTAL SHEETS 15	SHEET NO. 11		
PLOT SCALE = 40.0000' / IN.	CHECKED -	REVISED -	SCALE:			SHEET NO. OF SHEETS	STA. 117+00.00 TO STA. 122+00.00	CONTRACT NO. 72C31				
PLOT DATE = Jul-09-2008 12:00:02PM	DATE -	REVISED -	FED. ROAD DIST. NO. ILLINOIS FED. AID PROJECT									

PAVEMENT MARKING LEGEND

- ① PR PREFORMED PLASTIC PAVEMENT MARKING, TYPE B - LINE 5" (WHITE, 30' SKIP, 10' DASH)
- ② PR THERMOPLASTIC PAVEMENT MARKING - LINE 5" (WHITE, SOLID)
- ③ PR THERMOPLASTIC PAVEMENT MARKING - LINE 5" (YELLOW, SOLID)
- ④ PR PREFORMED PLASTIC PAVEMENT MARKING, TYPE B - LINE 5" (WHITE, 6' SKIP, 2' DASH)
- ⑤ PR THERMOPLASTIC PAVEMENT MARKING - LINE 5" (WHITE, 30' SKIP, 10' DASH)
- ⑥ PR THERMOPLASTIC PAVEMENT MARKING - LINE 6" (WHITE, SOLID)
- ⑦ PR PLASTIC PAVEMENT MARKING, TYPE B - LINE 6" (WHITE, SOLID)
- ⑧ PR PREFORMED PLASTIC PAVEMENT MARKING, TYPE B - LINE 8" (WHITE, SOLID)
- ⑨ PR PREFORMED PLASTIC PAVEMENT MARKING, TYPE B - LINE 12" (WHITE, SOLID)
- ⑩ PR PREFORMED PLASTIC PAVEMENT MARKING, TYPE B - LINE 12" (YELLOW, SOLID)
- ⑪ PR PREFORMED PLASTIC PAVEMENT MARKING, TYPE B - LINE 24" (WHITE, SOLID)
- ⑫ PR PREFORMED PLASTIC PAVEMENT MARKING, TYPE B - LETTERS & SYMBOLS (WHITE)
- PR PREFORMED PLASTIC PAVEMENT MARKING, TYPE B - LETTERS & SYMBOLS (WHITE, LARGE ARROW)
- ▶ PR RAISED PAVEMENT MARKERS, ONE-WAY AMBER
- ▷ PR RAISED PAVEMENT MARKERS, ONE-WAY CRYSTAL
- ◆ PR RAISED PAVEMENT MARKERS, TWO-WAY AMBER



FILE NAME = C:\Projects\1503400\sh\planb001.dgn
 USER NAME = [aughlinr]
 PLOT SCALE = 40.0000' / IN.
 PLOT DATE = Jul-09-2008 12:08:04PM

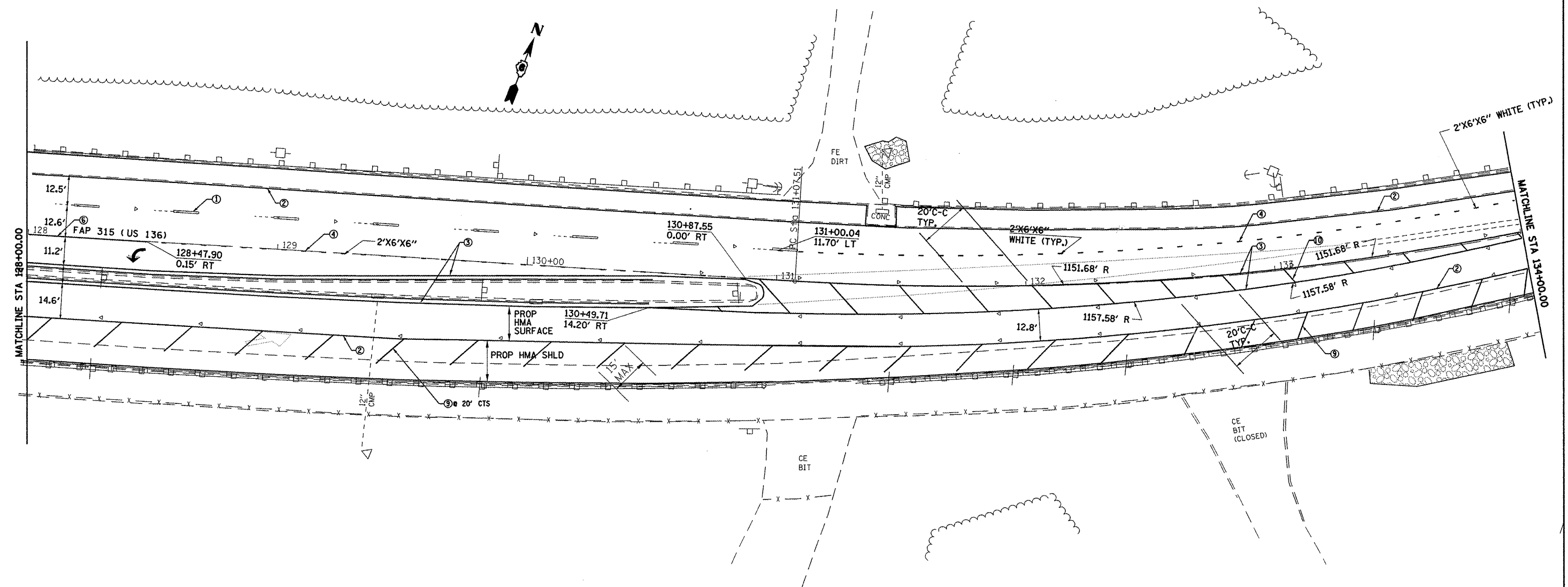
DESIGNED -	REVISED -
DRAWN -	REVISED -
CHECKED -	REVISED -
DATE -	REVISED -

STATE OF ILLINOIS
 DEPARTMENT OF TRANSPORTATION

PLAN VIEW
 SCALE: SHEET NO. OF SHEETS STA. 122+00.00 TO STA. 128+00.00

F.A.P. RTE.	SECTION	COUNTY	TOTAL SHEETS	SHEET NO.
315	23 RS-2	HANCOCK	15	12
FED. ROAD DIST. NO. ILLINOIS FED. AID PROJECT			CONTRACT NO. 72C31	

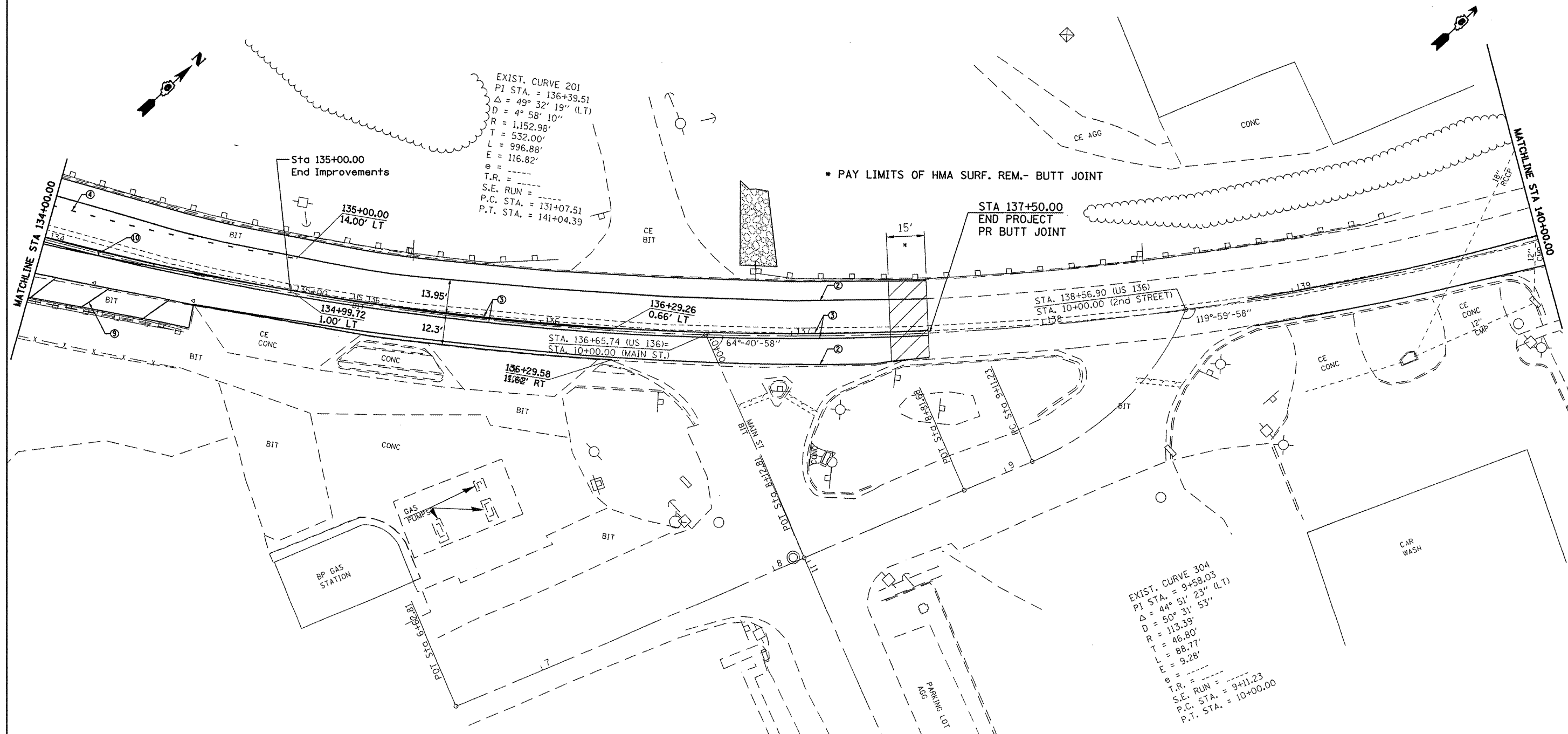
- PAVEMENT MARKING LEGEND**
- ① PR PREFORMED PLASTIC PAVEMENT MARKING, TYPE B - LINE 5" (WHITE, 30' SKIP, 10' DASH)
 - ② PR THERMOPLASTIC PAVEMENT MARKING - LINE 5" (WHITE, SOLID)
 - ③ PR THERMOPLASTIC PAVEMENT MARKING - LINE 5" (YELLOW, SOLID)
 - ④ PR PREFORMED PLASTIC PAVEMENT MARKING, TYPE B - LINE 5" (WHITE, 6' SKIP, 2' DASH)
 - ⑤ PR THERMOPLASTIC PAVEMENT MARKING - LINE 5" (WHITE, 30' SKIP, 10' DASH)
 - ⑥ PR THERMOPLASTIC PAVEMENT MARKING - LINE 6" (WHITE, SOLID)
 - ⑦ PR PLASTIC PAVEMENT MARKING, TYPE B - LINE 6" (WHITE, SOLID)
 - ⑧ PR PREFORMED PLASTIC PAVEMENT MARKING, TYPE B - LINE 8" (WHITE, SOLID)
 - ⑨ PR PREFORMED PLASTIC PAVEMENT MARKING, TYPE B - LINE 12" (WHITE, SOLID)
 - ⑩ PR PREFORMED PLASTIC PAVEMENT MARKING, TYPE B - LINE 12" (YELLOW, SOLID)
 - ⑪ PR PREFORMED PLASTIC PAVEMENT MARKING, TYPE B - LINE 24" (WHITE, SOLID)
 - ⑫ PR PREFORMED PLASTIC PAVEMENT MARKING, TYPE B - LETTERS & SYMBOLS (WHITE)
 - PR PREFORMED PLASTIC PAVEMENT MARKING, TYPE B - LETTERS & SYMBOLS (WHITE, LARGE ARROW)
 - ▶ PR RAISED PAVEMENT MARKERS, ONE-WAY AMBER
 - ▷ PR RAISED PAVEMENT MARKERS, ONE-WAY CRYSTAL
 - ◆ PR RAISED PAVEMENT MARKERS, TWO-WAY AMBER



FILE NAME = C:\Projects\603408\shp\planb001.dgn	USER NAME = leughinnr1	DESIGNED -	REVISED -	STATE OF ILLINOIS DEPARTMENT OF TRANSPORTATION	PLAN VIEW	F.A.P. RTE.	SECTION	COUNTY	TOTAL SHEETS	SHEET NO.
	PLOT SCALE = 40.0000' / IN.	DRAWN -	REVISED -			315	23 RS-2	HANCOCK	15	13
PLOT DATE = Jul-09-2008 12:00:07PM	CHECKED -	REVISED -	REVISED -	SCALE:	SHEET NO. OF SHEETS	STA. 128+00.00 TO STA. 134+00.00	FED. ROAD DIST. NO.	ILLINOIS FED. AID PROJECT	CONTRACT NO. 72C31	

PAVEMENT MARKING LEGEND

- ① PR PREFORMED PLASTIC PAVEMENT MARKING, TYPE B - LINE 5" (WHITE, 30' SKIP, 10' DASH)
- ② PR THERMOPLASTIC PAVEMENT MARKING - LINE 5" (WHITE, SOLID)
- ③ PR THERMOPLASTIC PAVEMENT MARKING - LINE 5" (YELLOW, SOLID)
- ④ PR PREFORMED PLASTIC PAVEMENT MARKING, TYPE B - LINE 5" (WHITE, 6' SKIP, 2' DASH)
- ⑤ PR THERMOPLASTIC PAVEMENT MARKING - LINE 5" (WHITE, 30' SKIP, 10' DASH)
- ⑥ PR THERMOPLASTIC PAVEMENT MARKING - LINE 5" (WHITE, SOLID)
- ⑦ PR PLASTIC PAVEMENT MARKING, TYPE B - LINE 6" (WHITE, SOLID)
- ⑧ PR PREFORMED PLASTIC PAVEMENT MARKING, TYPE B - LINE 8" (WHITE, SOLID)
- ⑨ PR PREFORMED PLASTIC PAVEMENT MARKING, TYPE B - LINE 12" (WHITE, SOLID)
- ⑩ PR PREFORMED PLASTIC PAVEMENT MARKING, TYPE B - LINE 12" (YELLOW, SOLID)
- ⑪ PR PREFORMED PLASTIC PAVEMENT MARKING, TYPE B - LINE 24" (WHITE, SOLID)
- ⑫ PR PREFORMED PLASTIC PAVEMENT MARKING, TYPE B - LETTERS & SYMBOLS (WHITE)
- PR PREFORMED PLASTIC PAVEMENT MARKING, TYPE B - LETTERS & SYMBOLS (WHITE, LARGE ARROW)
- ▶ PR RAISED PAVEMENT MARKERS, ONE-WAY AMBER
- ▷ PR RAISED PAVEMENT MARKERS, ONE-WAY CRYSTAL
- ◆ PR RAISED PAVEMENT MARKERS, TWO-WAY AMBER



FILE NAME = C:\Projects\603480\shp\planb001.dgn
 USER NAME = laughlinr1
 PLOT SCALE = 40.0000" / IN.
 PLOT DATE = Jul-09-2008 12:00:10PM

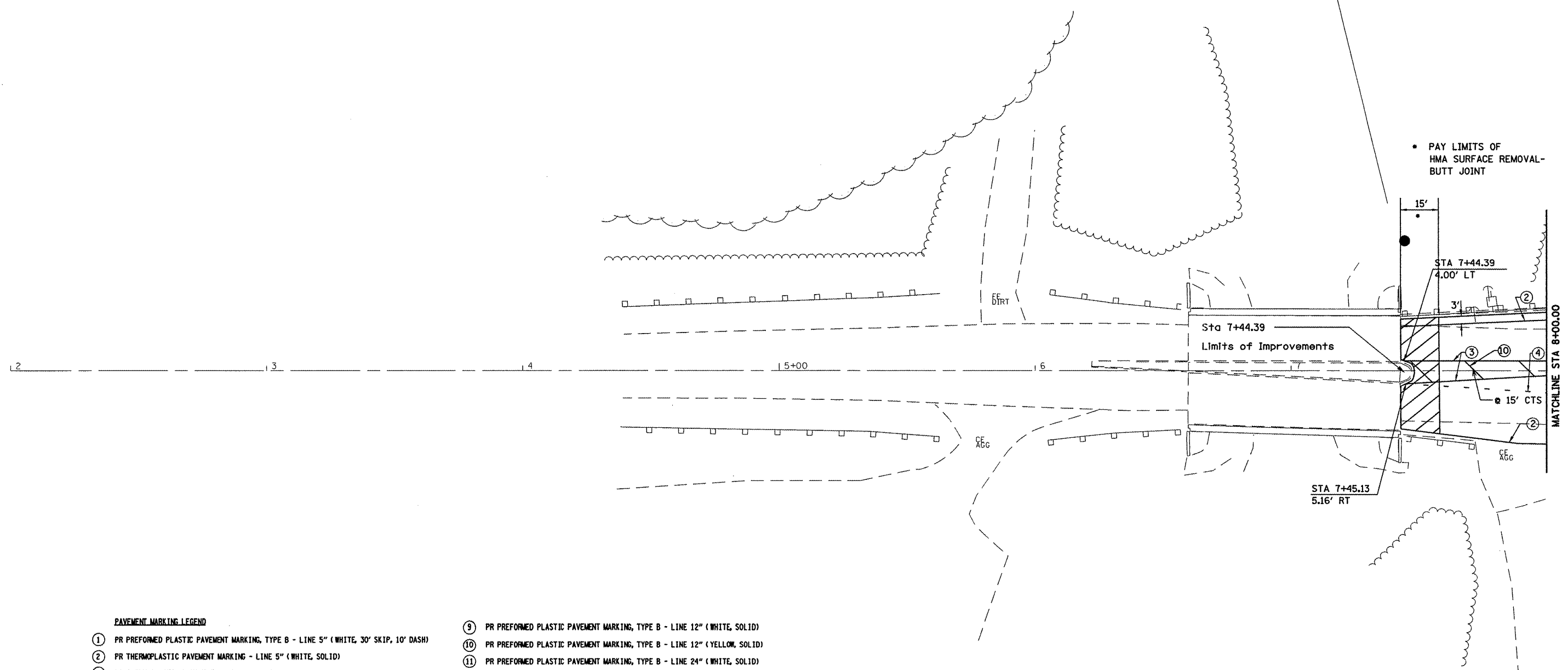
DESIGNED -	REVISED -
DRAWN -	REVISED -
CHECKED -	REVISED -
DATE -	REVISED -

**STATE OF ILLINOIS
 DEPARTMENT OF TRANSPORTATION**

PLAN VIEW

SCALE: SHEET NO. OF SHEETS STA. 134+00.00 TO STA. 140+00.00

F.A.P. RTE.	SECTION	COUNTY	TOTAL SHEETS	SHEET NO.
315	23 RS-2	HANCOCK	15	14
CONTRACT NO. 72C31				
FED. ROAD DIST. NO. ILLINOIS FED. AID PROJECT				



PAVEMENT MARKING LEGEND

- | | |
|---|--|
| ① PR PREFORMED PLASTIC PAVEMENT MARKING, TYPE B - LINE 5" (WHITE, 30' SKIP, 10' DASH) | ⑨ PR PREFORMED PLASTIC PAVEMENT MARKING, TYPE B - LINE 12" (WHITE, SOLID) |
| ② PR THERMOPLASTIC PAVEMENT MARKING - LINE 5" (WHITE, SOLID) | ⑩ PR PREFORMED PLASTIC PAVEMENT MARKING, TYPE B - LINE 12" (YELLOW, SOLID) |
| ③ PR THERMOPLASTIC PAVEMENT MARKING - LINE 5" (YELLOW, SOLID) | ⑪ PR PREFORMED PLASTIC PAVEMENT MARKING, TYPE B - LINE 24" (WHITE, SOLID) |
| ④ PR PREFORMED PLASTIC PAVEMENT MARKING, TYPE B - LINE 5" (WHITE, 6' SKIP, 2' DASH) | ⑫ PR PREFORMED PLASTIC PAVEMENT MARKING, TYPE B - LETTERS & SYMBOLS (WHITE) |
| ⑤ PR THERMOPLASTIC PAVEMENT MARKING - LINE 5" (WHITE, 30' SKIP, 10' DASH) | ➤ PR PREFORMED PLASTIC PAVEMENT MARKING, TYPE B - LETTERS & SYMBOLS (WHITE, LARGE ARROW) |
| ⑥ PR THERMOPLASTIC PAVEMENT MARKING - LINE 6" (WHITE, SOLID) | ▶ PR RAISED PAVEMENT MARKERS, ONE-WAY AMBER |
| ⑦ PR PLASTIC PAVEMENT MARKING, TYPE B - LINE 6" (WHITE, SOLID) | ▷ PR RAISED PAVEMENT MARKERS, ONE-WAY CRYSTAL |
| ⑧ PR PREFORMED PLASTIC PAVEMENT MARKING, TYPE B - LINE 8" (WHITE, SOLID) | ◆ PR RAISED PAVEMENT MARKERS, TWO-WAY AMBER |

FILE NAME =	USER NAME = laughlinr1	DESIGNED -	REVISED -
C:\Projects\603408\shsplans045.dgn		DRAWN -	REVISED -
		CHECKED -	REVISED -
		DATE -	REVISED -

**STATE OF ILLINOIS
DEPARTMENT OF TRANSPORTATION**

PLAN VIEW			
SCALE:	SHEET NO.	OF SHEETS	STA. TO STA. 8+00.00

F.A.P. RTE.	SECTION	COUNTY	TOTAL SHEETS	SHEET NO.
315	23 RS-2	HANCOCK	15	15
FED. ROAD DIST. NO. [ILLINOIS] FED. AID PROJECT			CONTRACT NO. 72C31	

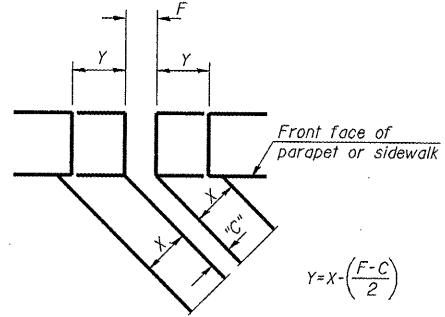
Joint Size	"C" at 50°F	"D" at 50°F
2"	2"	1 1/2" Min.
2 1/2"	2 1/2"	1 3/4" Min.
4"	3 1/4"	2 1/2" Min.

INSTALLATION NOTES

- ① Install continuous seal in roadway, parapet, curb, and sidewalk.
 - ② Install anchor blocks as indicated.
- Note A:
Maximum spacing of anchor bolts shall be 12" centers.

SKEW LIMITATIONS

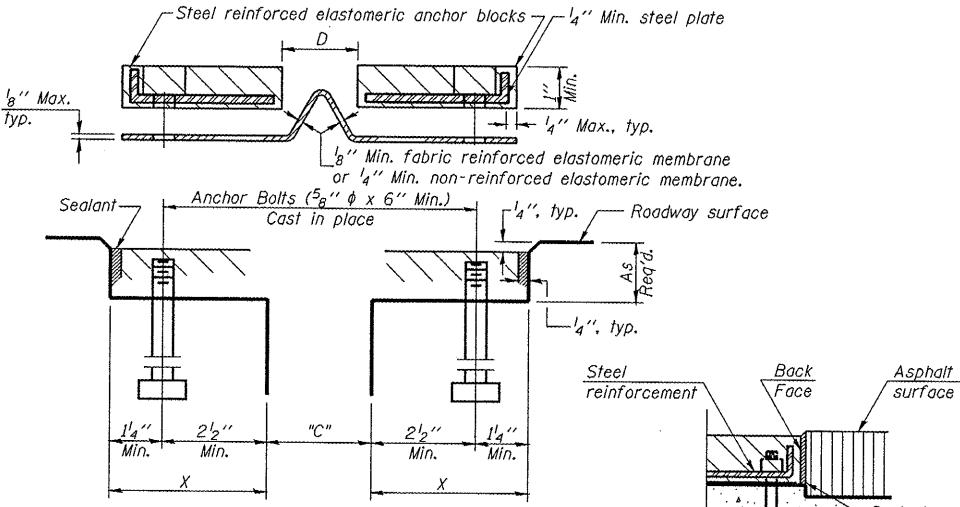
The details of the anchor blocks and the elastomeric membrane in the parapet, as shown, are for up to 50° skews. For skews greater than 50°, the anchor blocks and the elastomeric membrane, installed according to dimension "D", might require modifications to insure a minimum clearance of 1 1/2" from centerline of anchor studs to edge of parapet opening. The anchor blocks and the elastomeric membrane shall also be installed to the top of the parapet with the anchor studs spaced at ±12" cts.



FORMING BLOCKOUT SKETCH

$$Y = X - \frac{(F - C)}{2}$$

For dimension "F" see sheet #

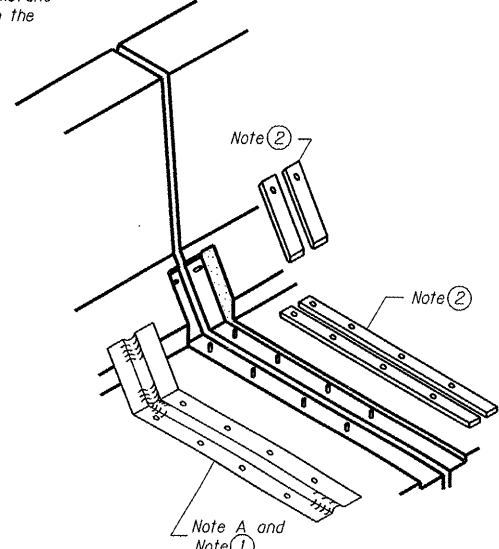


CROSS SECTION

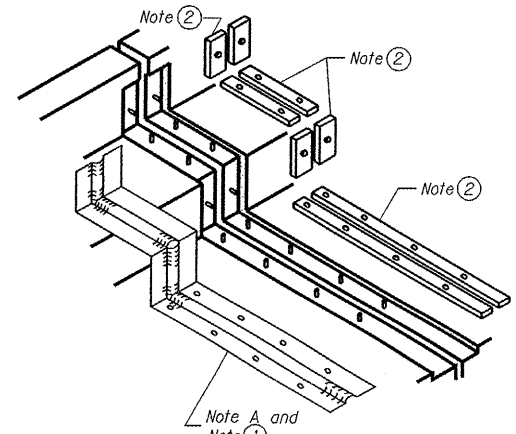
ANCHOR BLOCK WITH ASPHALT SURFACE

GENERAL NOTES

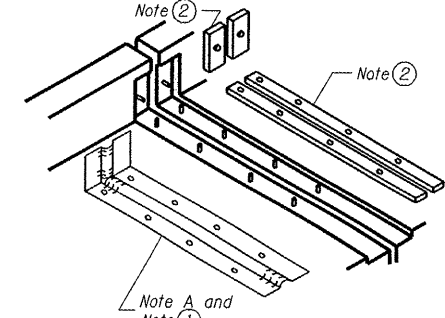
Continuous Seal Neoprene Expansion Joint shall consist of molded anchor blocks of elastomer and steel, field assembled over continuous lengths of elastomeric membrane. The elastomeric membrane shall be premolded with a single or a double upward convolution that will have a "memory" to return to its molded position upon joint closure. The convolution length shall be such that the extended length will not be greater than the manufactured length when the joint is fully expanded in its design range and will not protrude above the anchor blocks when the joint is fully compressed. Joint openings shall be adjusted according to Article 503.10(c) of the Standard Specifications when the deck is poured at an ambient temperature other than 50° F. The parapet and roadway membrane shall be made continuous by an approved vulcanizing process. Lapping will not be permitted.



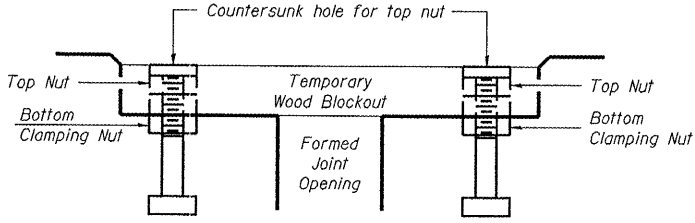
AT PARAPET



AT SIDEWALK OR MEDIAN

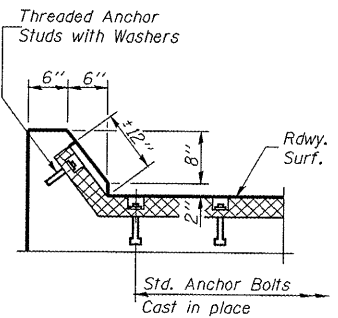


AT WALL

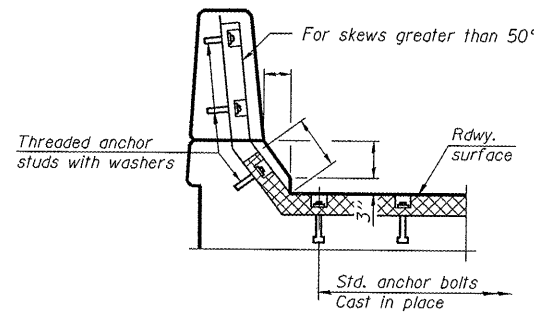


RECOMMENDED BLOCKOUT DETAIL

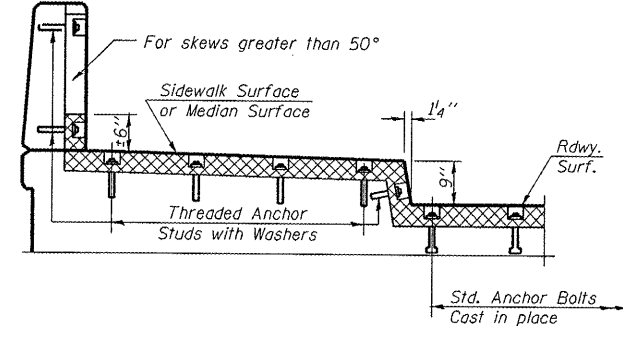
Note:
Stud needs to be threaded lower to allow for use of clamping nut.
Anchor studs should be stainless



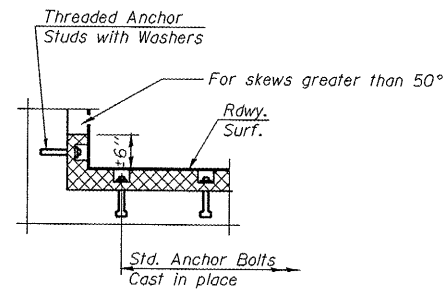
AT CURB



AT PARAPET



AT SIDEWALK OR MEDIAN TYPICAL END TREATMENTS



AT WALL

CONTINUOUS SEAL TYPE NEOPRENE EXPANSION JOINTS

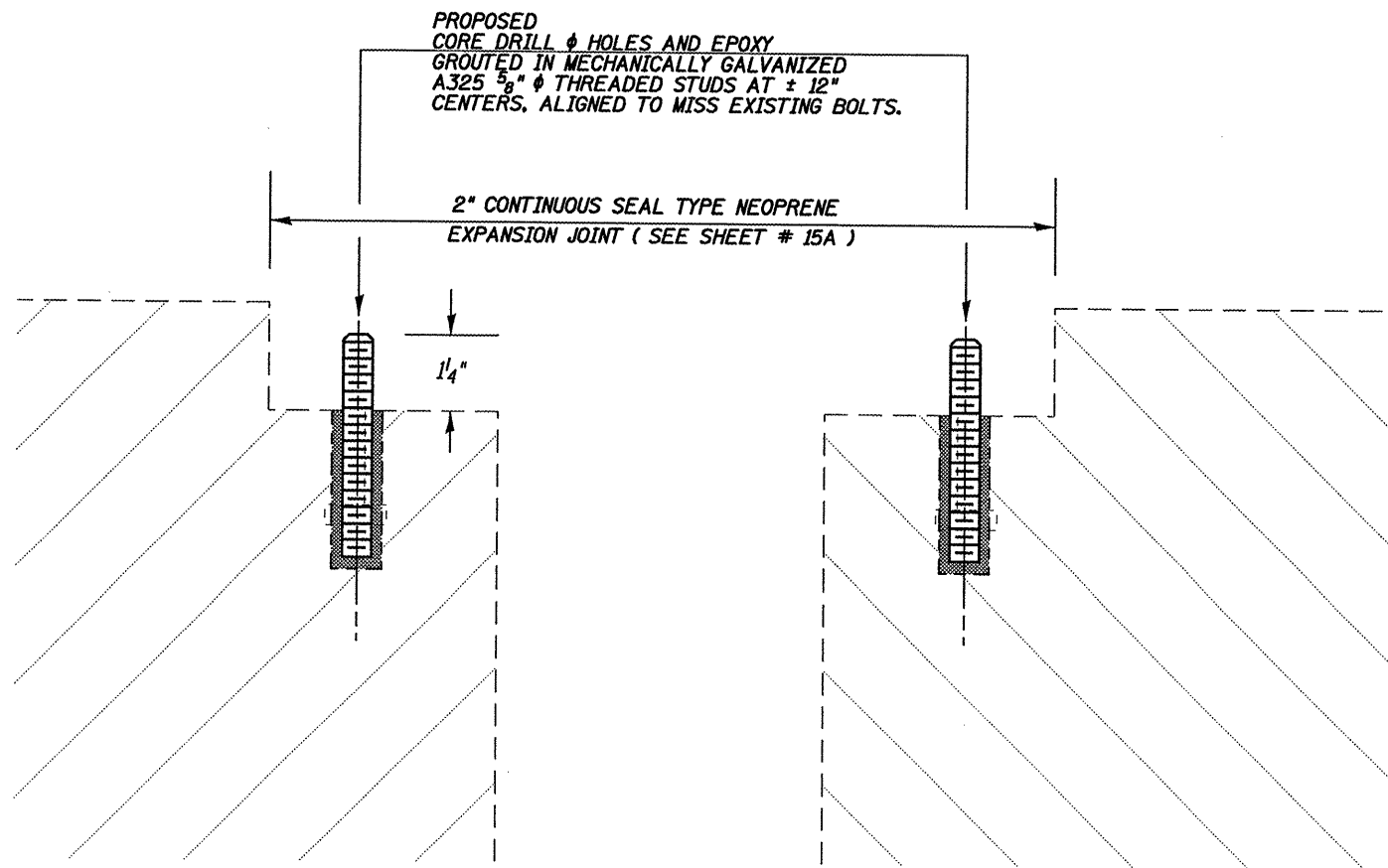
Added Sheet 7-16-08

FILE NAME =	USER NAME = laughtonr1	DESIGNED -	REVISED -
C:\Projects\4603408\ej-neopreneexpjoint.dgn		DRAWN -	REVISED -
	PLOT SCALE = 100.0000 / IN.	CHECKED -	REVISED -
	PLOT DATE = Jul-15-2008 11:49:08AM	DATE -	REVISED -

STATE OF ILLINOIS
DEPARTMENT OF TRANSPORTATION

CONTINUOUS SEAL TYPE
NEOPRENE EXPANSION JOINT

F.A.P. RTE.	SECTION	COUNTY	TOTAL SHEETS	SHEET NO.
315	23RS-2	HANCOCK	15	15A
FED. ROAD DIST. NO. ILLINOIS FED. AID PROJECT			CONTRACT NO. 72C31	



2" NEOPRENE EXPANSION JOINT (PROP.)

NOTE:

THE REMOVAL OF THE EXISTING EXPANSION JOINT, REMOVAL OF EXISTING STUDS, AND INSTALLATION OF NEW STUDS TO BE INCLUDED WITH COST FOR NEOPRENE EXPANSION JOINT 2".

Added Sheet 7-16-08

FILE NAME =	USER NAME = laughtin-1	DESIGNED -	REVISED -
C:\Projects\4683486\neopreneexp.joint.dgn		DRAWN -	REVISED -
PLOT SCALE = 100.0000 / IN.		CHECKED -	REVISED -
PLOT DATE = Jul-15-2008 11:49:11AM		DATE -	REVISED -

**STATE OF ILLINOIS
DEPARTMENT OF TRANSPORTATION**

**CONTINUOUS SEAL TYPE
NEOPRENE EXPANSION JOINT**

F.A.P. RTE.	SECTION	COUNTY	TOTAL SHEETS	SHEET NO.
315	23RS-2	HANCOCK	15	158
CONTRACT NO. 72C31				
SCALE:		SHEET NO. OF SHEETS STA. TO STA.		
FED. ROAD DIST. NO.		ILLINOIS FED. AID PROJECT		