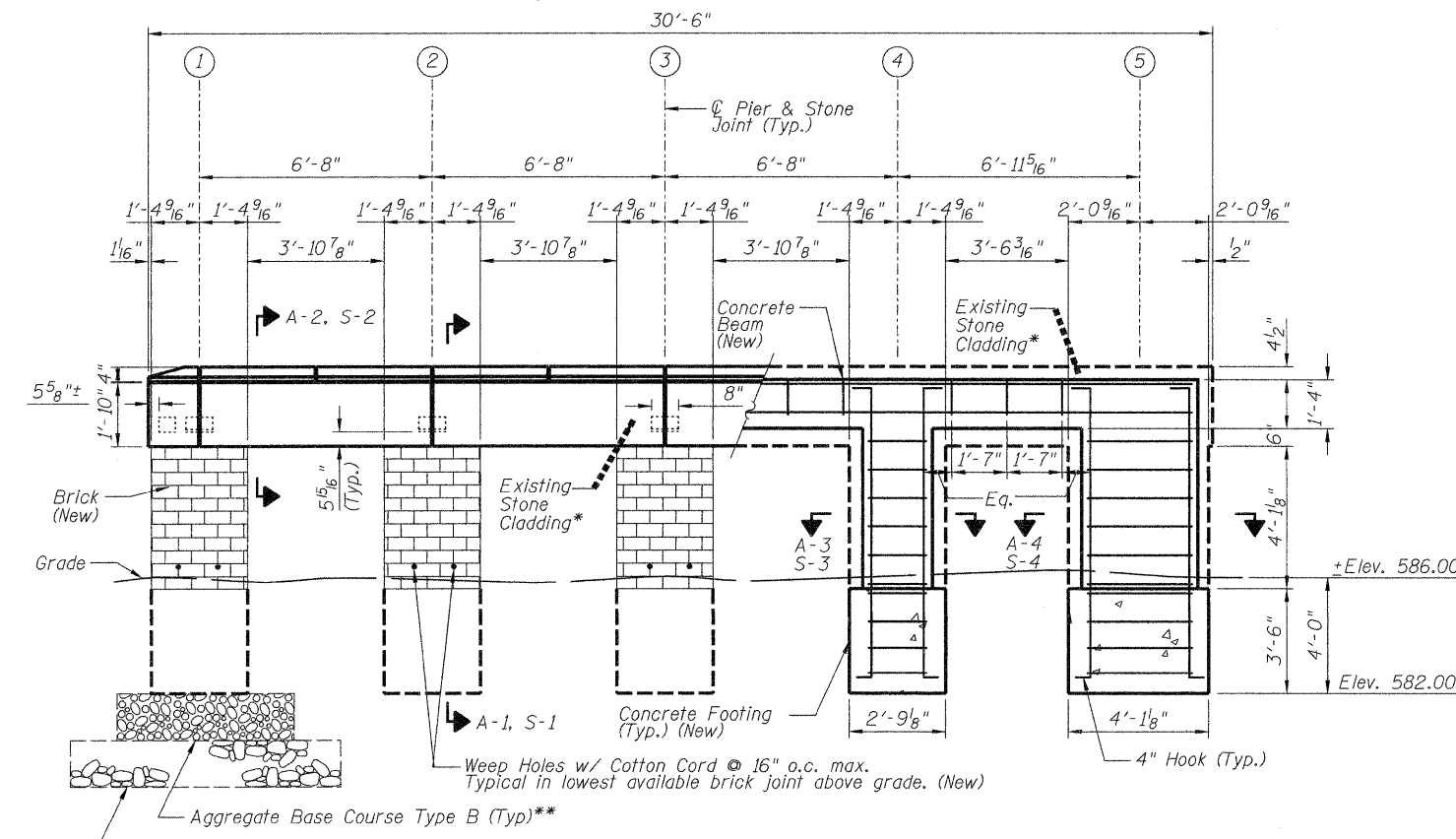
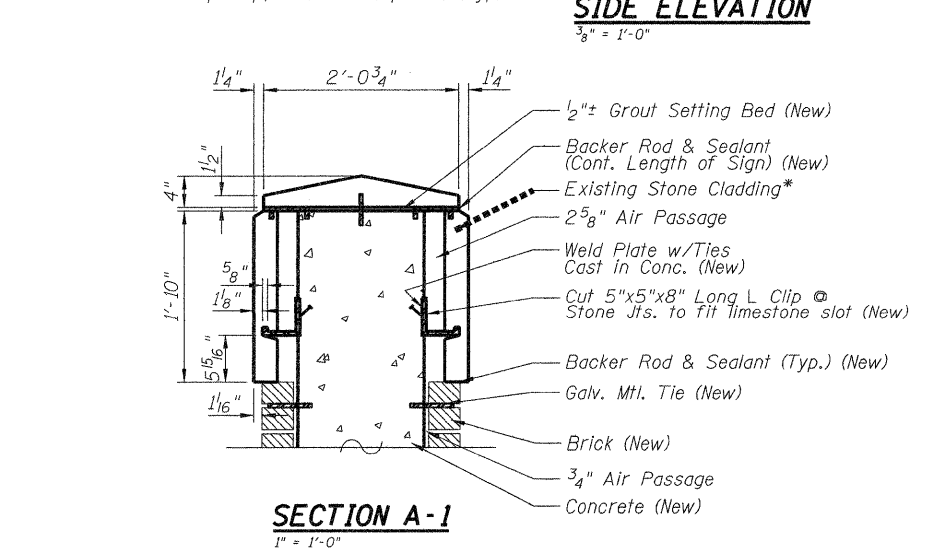


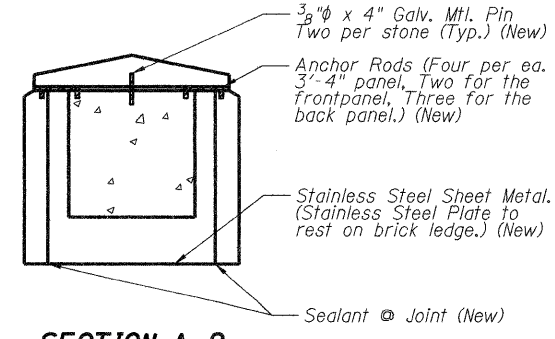
**PLAN-ENTRANCE SIGN**  
3/8" = 1'-0"



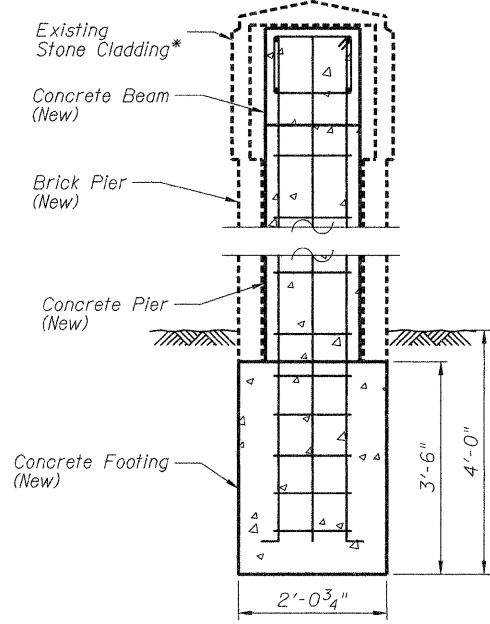
**SIDE ELEVATION**  
3/8" = 1'-0"



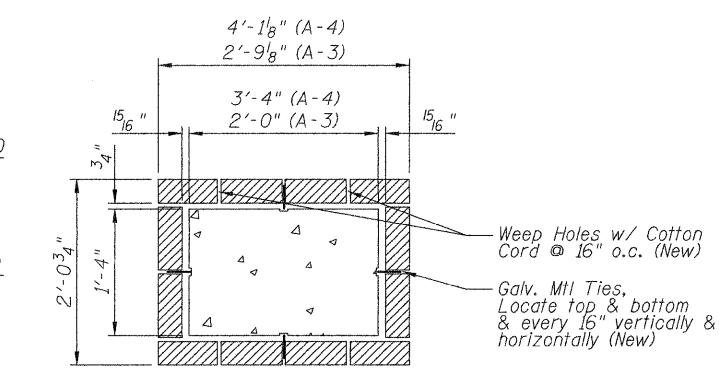
**SECTION A-1**  
1" = 1'-0"



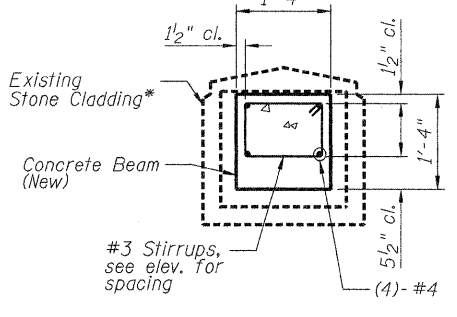
**SECTION A-2**  
1" = 1'-0"



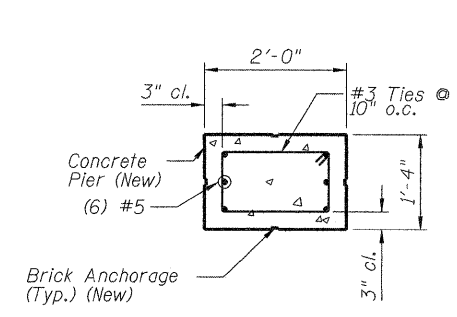
**SECTION S-1**  
3/4" = 1'-0"



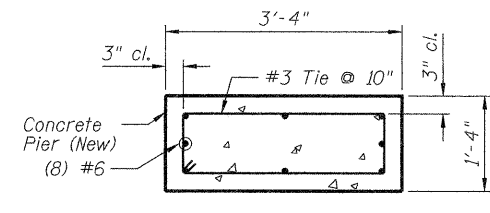
**SECTION A-3 & A-4**  
1" = 1'-0"



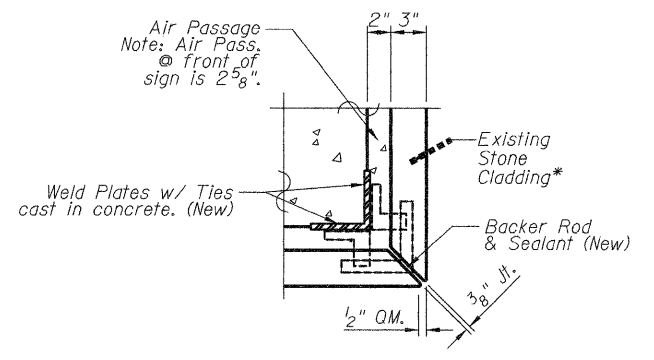
**SECTION S-2**  
3/4" = 1'-0"



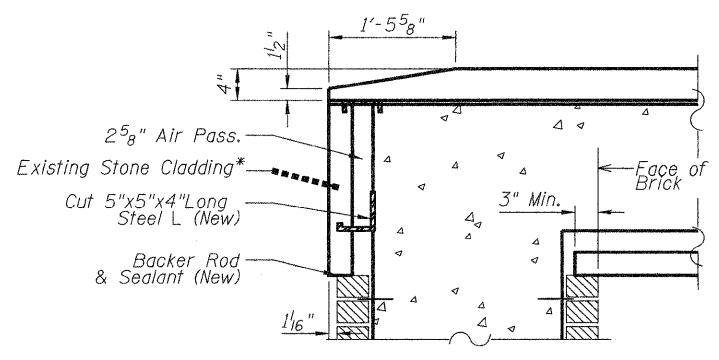
**SECTION S-3**  
3/4" = 1'-0"



**SECTION S-4**  
3/4" = 1'-0"



**DETAIL A-5**  
1-1/2" = 1'-0"



**SECTION A-3**  
1" = 1'-0"

\* Existing stone cladding to be removed from the existing sign and reinstalled on this new sign. See General Notes for additional information.  
\*\* Use of Aggregate Base Course, Type B and/or Stone Rip Rap, Class A4 (Special) shall be determined by the Geotechnical Engineer. See General Notes

FILE NAME =	USER NAME = Jeremy	DESIGNED - BFK	REVISED -	<b>STATE OF ILLINOIS DEPARTMENT OF TRANSPORTATION</b>	<b>SIGN RELOCATION DETAIL</b>	F.A. RTE.	SECTION	COUNTY	TOTAL SHEETS	SHEET NO.	
#FILEL#		DRAWN - SMB	REVISED -			592	65I-TS-1	MADISON	50	27	
PLOT SCALE = #SCALE#		CHECKED - JLK	REVISED -			CONTRACT NO. 76B41					
PLOT DATE = 7/9/2008		DATE - 6/18/08	REVISED -			FED. ROAD DIST. NO. 8 ILLINOIS FED. AID PROJECT					