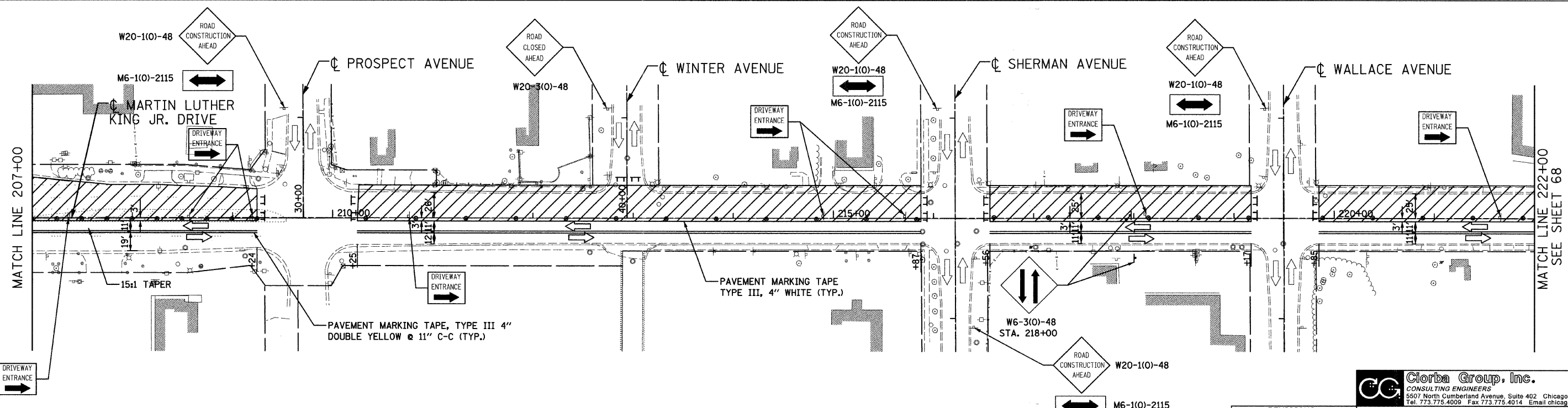
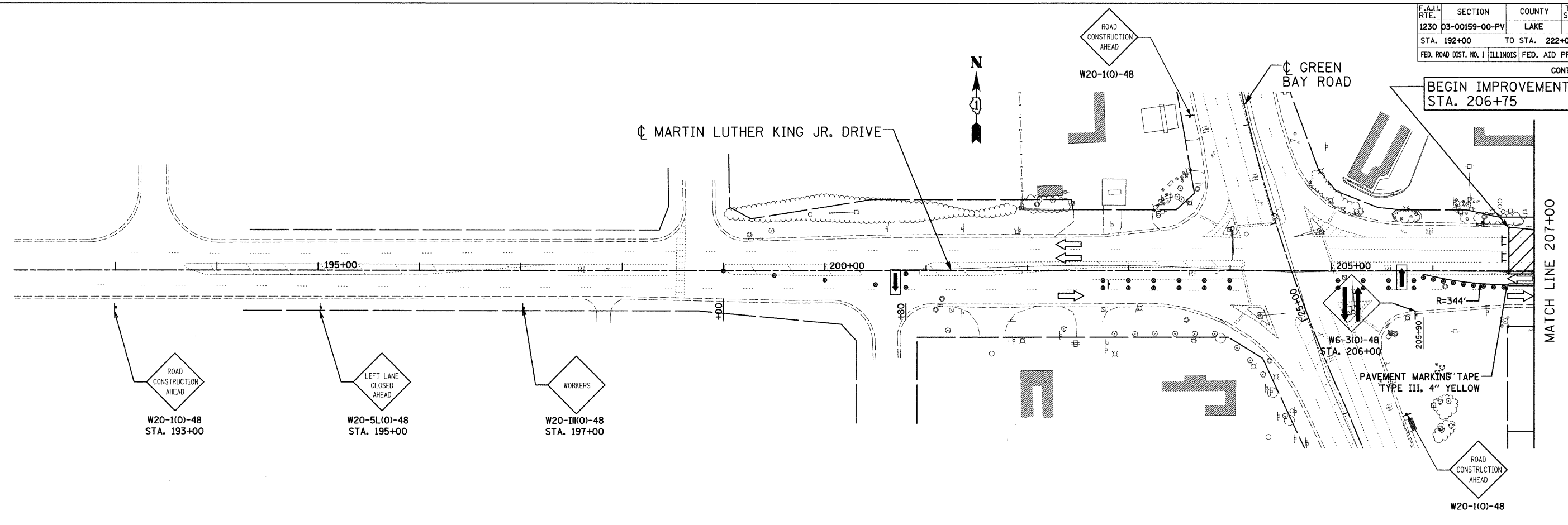


F.A.U. RTE.	SECTION	COUNTY	TOTAL SHEETS	SHEET NO.
1230	03-00159-00-PV	LAKE	262	67
STA. 192+00		TO STA. 222+00		
FED. ROAD DIST. NO. 1		ILLINOIS	FED. AID PROJECT	
CONTRACT: 83828				



LEGEND

[Symbol]	TYPE III BARRICADE	TYPE II BARRICADE OR DRUM W/ MONODIRECTIONAL STEADY BURNING LIGHT (SPACED @ 50' CENTERS IN TANGENTS, 25' CENTERS IN TAPERS)
[Symbol]	WORK ZONE	SIGN ON PERMANENT OR TEMPORARY SUPPORT
[Symbol]	ARROW BOARD	

REVISIONS	
NAME	DATE

Clorba Group, Inc.
CONSULTING ENGINEERS
5507 North Cumberland Avenue, Suite 402 Chicago, Illinois 60656
Tel. 773.775.4009 Fax 773.775.4014 Email chicago@clorba.com

CITY OF NORTH CHICAGO
MARTIN LUTHER KING JR. DRIVE IMPROVEMENTS
TRAFFIC CONTROL AND PROTECTION
STAGE 2

SCALE: 1"=50'
DATE: APRIL, 2008
DRAWN BY: BWS
CHECKED BY: MJL

DATE: 6/30/2008
TIME: 10:00 AM
FILENAME: N:\PROJECTS\181\Design\MOI\Sheets\08-5181-MOT-11-04.dgn